

PUBLIC UTILITIES COMMISSION  
505 Van Ness Avenue  
San Francisco CA 94102-3298



**Pacific Gas & Electric Company**  
**ELC (Corp ID 39)**  
**Status of Advice Letter 5952E**  
**As of April 12, 2021**

Subject: Implementation Plan for Data Portal to Help Local and Tribal Governments Identify Resiliency Opportunities in Compliance with D.20-06-017

Division Assigned: Energy

Date Filed: 09-17-2020

Date to Calendar: 09-21-2020

Authorizing Documents: D2006017

<b>Disposition:</b>	<b>Accepted</b>
<b>Effective Date:</b>	<b>04-09-2021</b>

Resolution Required: No

Resolution Number: None

Commission Meeting Date: None

CPUC Contact Information:

[edtariffunit@cpuc.ca.gov](mailto:edtariffunit@cpuc.ca.gov)

AL Certificate Contact Information:

Kimberly Loo

(415)973-4587

[PGETariffs@pge.com](mailto:PGETariffs@pge.com)

**PUBLIC UTILITIES COMMISSION**  
505 Van Ness Avenue  
San Francisco CA 94102-3298



To: Energy Company Filing Advice Letter

From: Energy Division PAL Coordinator

Subject: Your Advice Letter Filing

The Energy Division of the California Public Utilities Commission has processed your recent Advice Letter (AL) filing and is returning an AL status certificate for your records.

The AL status certificate indicates:

- Advice Letter Number
- Name of Filer
- CPUC Corporate ID number of Filer
- Subject of Filing
- Date Filed
- Disposition of Filing (Accepted, Rejected, Withdrawn, etc.)
- Effective Date of Filing
- Other Miscellaneous Information (e.g., Resolution, if applicable, etc.)

The Energy Division has made no changes to your copy of the Advice Letter Filing; please review your Advice Letter Filing with the information contained in the AL status certificate, and update your Advice Letter and tariff records accordingly.

All inquiries to the California Public Utilities Commission on the status of your Advice Letter Filing will be answered by Energy Division staff based on the information contained in the Energy Division's PAL database from which the AL status certificate is generated. If you have any questions on this matter please contact the:

Energy Division's Tariff Unit by e-mail to  
**[edtariffunit@cpuc.ca.gov](mailto:edtariffunit@cpuc.ca.gov)**

September 17, 2020

**Advice 5952-E**

(Pacific Gas and Electric Company ID U 39 E)

Public Utilities Commission of the State of California

**Subject: Implementation Plan for Data Portal to Help Local and Tribal Governments Identify Resiliency Opportunities in Compliance with D.20-06-017**

**I. Purpose**

Pacific Gas and Electric Company ("PG&E") hereby submits this Tier 2 Advice Letter ("AL") in compliance with the California Public Utilities Commission ("CPUC" or "Commission") Decision ("D.") 20-06-017 ("Decision") Ordering Paragraph ("OP") 11. The AL describes implementation details for a separate, access-restricted data portal ("Portal") for local jurisdictions that will provide information to support microgrid and resiliency project development opportunities, as outlined in Section 4.3.5.1 of the Decision.

**II. Background**

The Commission initiated Rulemaking ("R.") 19-09-009 ("Microgrid OIR") to develop a policy framework surrounding the commercialization of microgrids and related resiliency strategies and to implement Senate Bill (SB) 1339 (Stern, 2018).

On December 20, 2019 the assigned Commissioner's Scoping Memo and Ruling was issued, adopting a scope and schedule for Track 1 of the proceeding. Track 1 addressed deploying resiliency planning in areas that are prone to outage events and wildfires, with the goal of establishing key microgrid and resiliency strategies as soon as possible. Subsequently, on January 21, 2020, Administrative Law Judge Rizzo issued a Ruling with Energy Division staff's ("Staff's") proposal on short-term actions related to microgrids and other resiliency strategies that could be initiated in early 2020 to reduce the impact of public safety power shutoff ("PSPS") outages or other catastrophic events.

On June 11, 2020, the Commission adopted D.20-06-017, which approves certain Staff proposals for information sharing with local and tribal governments. This Advice Letter

addresses the requirements included in Ordering Paragraph 11 of D.20-06-017, which requires:

*Pacific Gas and Electric Company (PG&E), Southern California Edison Company (SCE), and San Diego Gas & Electric Company (SDG&E) shall each submit Tier 2 Advice Letters within 30 days of the date of issuance of this decision, providing their plan for developing a separate, access-restricted data portal for sharing information with local and tribal governments. This Advice Letter shall include, at a minimum: (1) a work plan and budget estimate for developing a data portal that provides appropriate information and meets the requirements listed in section 4.3.5.1 of this decision; and (2) a narrative description of how the work plan relates to any other planned work on related systems. The work plan shall include a list of tasks, a schedule for each task, any interdependencies among tasks, and key milestones. These Advice Letters shall demonstrate compliance with Section 4.3.5.1 of this decision, which requires the access-restricted portal for local and tribal governments to include:*

- a) Access to the tool available to restricted to tribal governments, County OES, or organizations created by political subdivisions to carry out the provisions of the State Emergency Plan (California Emergency Services Act Section 8568);*
- b) Local and tribal government access to this tool should not require the execution of a non-disclosure agreement, but should be subject to confidential treatment;*
- c) The portal at a minimum should include:*
  - i. Layer showing utility planned work/grid investments in both tabular and geographic information system format, pursuant to utility obligations under General Order (GO) 131-D, Standard 1 Section E and GO-166, Section XI.*
    - i. Data about individual projects should include at a minimum:*
      - 1. Location*
      - 2. Project descriptions (what is being upgraded/built, why is it being upgraded/built);*
      - 3. Project timelines; and*
      - 4. Projected completion date.*
  - ii. Layer showing High Fire Threat Districts;*
  - iii. Layer(s) showing electrical infrastructure;*
    - i. Substations and distribution circuits, including subtransmission line and stations;*
    - ii. Transmission lines feeding distribution; subtransmission substations.*
  - iv. Layer showing weather polygons or other key weather-related determining factors that led to the decision to de-energize from each prior public safety power shutoff event and resulting distribution and transmission line outages (transmission line de-*

*energization visualizations should only be included to the extent that they will result in distribution outage*

PG&E submits this Tier 2 Advice Letter in compliance with Ordering Paragraph 11 of D.20-06-017.

### **III. Work Plan and Budget Estimate for Developing the Data Portal**

On a preliminary basis, PG&E plans to design, develop, and implement the Microgrids Portal in time for initial use by September 1, 2021, provided that all milestones and implementation tasks listed in this plan are refined and completed on time. Portal functionality and automation will be built out over three phases beginning in January 2021, and lasting through July 2022, provided task milestones can and are met. PG&E estimates this is a potentially achievable timeline to ensure a successful launch for the Portal, but given the complexity and uncertainty, reserves the right to adjust and refine the schedule and estimated costs and notify the Commission of changes in the schedule and estimated costs due to more refined milestones and costs or unanticipated design and implementation issues or delays in necessary internal or Commission approvals. The current work plan schedule and details of the three phases are described below. All milestones assume timely and successful completion of prior milestones, and adjustment of the milestones accordingly.

#### **A. Timeline**

##### **Q1 2021**

- Team Stand-up and Portal Buildout
  - Stand-up basic Portal based on PSPS Portal Architecture
- Develop Phase 1 Portal
  - Design Process for Capturing GO 131-D Data
  - Design Process for Capturing GO 166 Data

##### **Q2 2021**

- Testing of the Portal
  - Population of CPUC HFTDs data and PG&E electric transmission and distribution data – Phase 1a
  - Population of historic PSPS Polygons, as well as weather polygons – Phase 1b
- Population of CPUC HFTDs data and PG&E electric transmission and distribution data – Phase 1c
- External Agency Communication and Training on Portal
- Phase 1a Goes Live
- Phase 1b Goes Live
- Phase 1c Goes Live

**Q3 2021**

- Develop Phase 2 Automation Enhancements
  - Automate stream of GO 131-D data
  - Automate stream of GO 166 data
  - Automate stream of other data
- Portal testing with automation features included

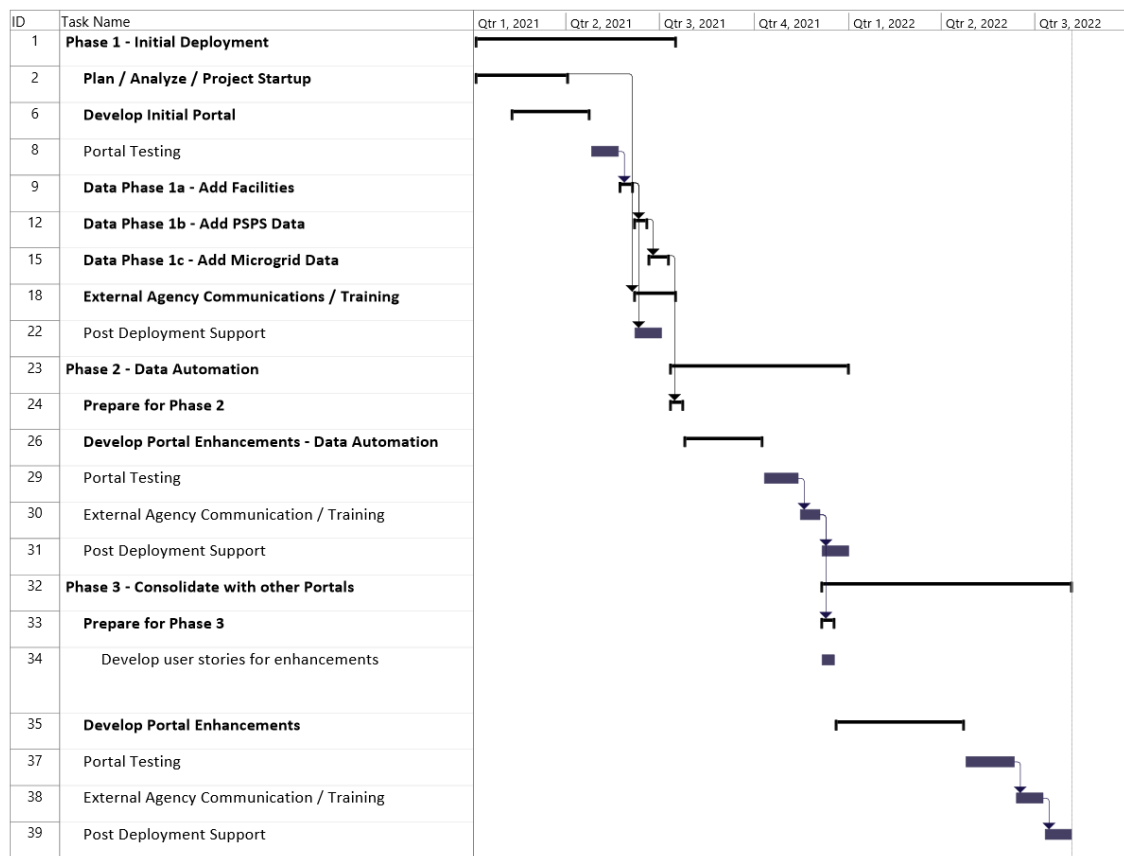
**Q4 2021**

- External Agency Communication and Training on Phase 2 Portal Enhancements
- Phase 2 Data Automation Enhancements Goes Live
- Develop Phase 3 Portal Consolidation Enhancements

**Q2 2022**

- Portal testing with consolidation features included
- External Agency Communication and Training on Phase 3 Portal Enhancements  
Phase 3 Portal Consolidation Enhancements Go Live (

The work plan schedule is also depicted in the following Gantt chart:



## B. Description of the Three Phases

### Phase 1 – Initial Deployment:

*In this phase, the initial portal will be developed and deployed, containing the security and restricted access requirements, as well as meeting each of the requirements listed in the Order. PG&E is targeting completion of this first phase by end of Q2, 2021 in order to ensure that the system is functional and being used prior to the traditional start of Diablo winds at the beginning of September. In order to reduce the amount of time to stand up the portal, PG&E intends to leverage the architecture, and security processes from PG&E's PSPS Portal to develop the separate Microgrids Data Portal – using ArcGIS Online with Hubs, and duplicating the processes for securing the data and ensuring users agree to keep data confidential, including the “single-checkbox” permissions in lieu of a non-disclosure agreement consistent with the Commission's and PG&E's requirements for the PSPS Portal.*

PG&E anticipates using an Agile software development methodology, which should allow for releases as the work is completed, and as communication and change management is completed. It would also allow for partnership with the Commission and stakeholders to ensure that the Portal meets its stated goals. Finally, this approach would allow three Phase 1 releases, as each piece is complete, and made available. PG&E believes this will lower risk and make change management / training easier for users of the Portal.

**Phase 1a:** This is the portal itself available, and with basic data (CPUC High Fire Threat Districts and PG&E electric transmission and distribution lines) displayed. Its primary use will be to make sure that everything is working well, and that parties who use the system will have access and can conveniently access data in the system.

**Phase 1b:** This enhances the Phase 1a release with historic PSPS Polygons, as well as weather polygons. Since these polygons are only generated with each PSPS event, we do not anticipate automatically updating this data in the first phase. We would include historical event-specific data from 2019 and 2020 as it was generated at that time (in 2019, PG&E used a buffering technique to generate the polygons, in 2020 we moved to a parcel-based approach).

**Phase 1c:** This enhances the Phase 1b release with the GO 131-D and GO 166 data, both in tabular and spatial format. At this point, it is expected that the data would be generated manually and updated on a periodic basis.

PG&E estimates Phase 1a-Phase 1c will be complete in Q3, 2021.

### Phase 2 – Data Automation

In Phase 2, PG&E intends to automate the generation of both the tabular and spatial data reporting related to the GO 131-D and GO 166 (Standard 1, Section E) / Wildfire Mitigation Plan data. This will take the process from one where analysts may be

responsible for creating datasets to be uploaded periodically into one where data can be automatically updated as required.

Although the timeline shows a single deployment in Q4, 2021, because of the Agile development methodology, it may be possible to deploy each of the datasets separately as they become available, if they do not follow at the same time. This automated data-stream would be available to other systems that are interested in the data, including the Distribution Resources Plan (DRP) Data Access Portal, and internal systems as needed.

#### Phase 3 – Evaluate Consolidation with other Portals

Because PG&E intends to use the same underlying architecture as the PSPS portal, it may ultimately be easier for the wildfire emergency response users of the portals to have a single point of entry to PG&E's grid and planning data. This is especially true as some the users of the Microgrid portal may overlap with users of the PSPS portal. This phase of the project would evaluate consolidating access for the various agencies to a single login that would provide multiple datasets and streamline the updating of datasets to a single location, rather than multiple locations, as long as the PSPS event-specific uses of the PSPS Portal are not degraded or confused.

PG&E estimates end of Q2, 2022 as the deployment date for the Phase 3 evaluation.

#### **IV. Budget Estimate for Development of the Data Portal**

The conceptual and preliminary estimate for direct information technology costs of this project is \$2,330,000. This cost estimate does not include other non-IT, indirect implementation and ongoing maintenance costs, which cannot be developed until further refinement of the project plan. The confidence in the estimate is +/-40%. This estimate is subject to change and contingency costs as the project moves forward. A breakdown by year of capital versus expense is shown below:

<b>Target Distribution</b>	<b>2021</b>	<b>2022</b>	<b>Grand Total</b>
Capital	\$ 1,078,009	\$ 573,991	\$ 1,652,000
Expense	\$ 435,604	\$ 242,396	\$ 678,000
<b>Annual Total</b>	<b>\$ 1,513,613</b>	<b>\$ 816,387</b>	<b>\$ 2,333,000</b>

PG&E has a method of developing conceptual estimates based on high level requirements and assumptions. As requirements are refined, the estimates will also be refined. Requirements include both functional and non-functional requirements (e.g., displaying infrastructure, and disaster recovery plans). It is assumed that the PSPS Portal architecture and processes for approvals can be leveraged for this Microgrid Portal.



## **V. Description of How Data Access Will Be Managed**

PG&E currently has a portal available for PSPS events that is accessible by many of the same stakeholders mentioned in the Decision (i.e., *tribal governments, County OES', or organizations created by political subdivisions to carry out the provisions of the State Emergency Plan*). The same on-line registration and confidentiality access controls would be enforced for this new portal, through on-line registration and agreement by users. Similar to the PSPS Portal, users will be able to request access on a web page by completing a form and their request will be reviewed by PG&E personnel through a similar process to the PSPS Portal requests. Any local and tribal government that requests access to the Portal will be able to register on-line subject to various terms and conditions for use of and restricted access to the data, comparable to the on-line agreement approach used for the PSPS Portal users and referenced in the Commission's Phase 2 PSPS OIR decision.<sup>1</sup>

In the Decision, the Commission directed the utilities "to create a separate, access-restricted portal for local and tribal governments."<sup>2</sup> Accordingly, PG&E plans to limit access to the portal to local and tribal governments, County OES, or organizations created by political subdivisions to carry out the provisions of the State Emergency Plan (California Emergency Services Act Section 8568).

## **VI. Description of How Data Will Be Presented for the Various Datasets Required in Section 4.3.5.1**

As required by the Order, PG&E will display the following datasets:

### **1. Transmission and Distribution Infrastructure Data**

The Transmission and Distribution ("T&D") Infrastructure data will be displayed geospatially in the portal. It will show the location of T&D conductors and substations.<sup>3</sup> T&D layers would be managed separately. This data will be provided by a feed from PG&E's Electric Transmission and Electric Distribution GIS systems.

### **2. High Fire Threat District data**

The High Fire Threat District ("HFTD") data will be provided as a fixed dataset. The data will match that provided by the CPUC at <https://www.cpuc.ca.gov/firethreatmaps/>. This data is generally static and will only be updated periodically when the HFTD maps are updated by the CPUC.

---

<sup>1</sup> See D.20-05-051.

<sup>2</sup> Decision, p. 65.

<sup>3</sup> PG&E will follow all NERC Critical Infrastructure Protection requirements with respect to releasing information related to conductors and substations.

### 3. Weather Polygons

The weather polygons generated by the PG&E Meteorology Department used to determine the extent of PSPS events as they currently exist for previous events will be presented as an overlaid layer to the HFTD and facilities data. If there are any future events, these polygons would additionally be overlaid. Each event will be its own layer so that analysis can be performed. PG&E will aim to include any new weather polygons 30 days after the conclusion of an event.

### 4. PSPS Event Polygons

The polygons used to show the boundaries of the PSPS events from previous events as they currently exist will be presented as an overlaid layer to the HFTD, facilities, and Weather Polygons. Note that in 2019 a buffer approach was used to create the boundaries, while in 2020, PG&E switched to a parcel-based approach. Each event will be its own layer so that analysis can be performed. PG&E will aim to include any new PSPS Event Polygons within 30 days after the conclusion of an event.

### 5. GO 131-D, Section XI Data

PG&E will publish grid investments and utility planned work pursuant to GO 131-D Section XI. Grid investments and planned work published as part of the Assembly Bill 970 (AB 970) reports will be included to ensure compliance with this requirement.

The GO 131-D data will be available in two ways, spatial and tabular. The spatial data will be an overlay to the segment(s) of conductor that the work will apply to. It will display similar to a highlight. Data relating to the project timelines and project purpose will be stored as part of the feature class, and the features will be color coded by status.

The tabular data will provide similar information, a report detailing the project, the purpose, the estimated timeline, and the status will be provided. Locations will be by reference to a segment of conductor in the EDGIS, and potentially the start and end point of the project in Latitude/Longitude coordinates.

### 6. GO 166, Standard 1, Section E Data

PG&E will publish grid investments and utility planned work pursuant to Section 1, Section E of GO 166. Grid investments and planned work published as part of the Wildfire Mitigation Plan (WMP) reports will be included to ensure compliance with this requirement.

The data will be available in 2 ways, spatial and tabular. The spatial data will be an overlay to the segments of conductor that the work will apply to, where this is possible. It might also be necessary to show the project outlines as defined in the GIS system by a "Work in Progress" (WIP) Polygon. It will be preferred to highlight the segments where possible. Data relating to the project timelines and project purpose will be stored as part of the feature class, and the features will be color coded by status.

The tabular data will provide similar information, a report detailing the project, the purpose, the timeline, and the status will be provided. Locations will be by reference to a segment of conductor in the EDGIS, and potentially the start and end point of the project in Latitude/Longitude coordinates. PG&E will update this data on a quarterly basis to align with other reporting obligations that include similar data.

### **Protests**

**\*\*\*Due to the COVID-19 pandemic and the shelter at home orders, PG&E is currently unable to receive protests or comments to this advice letter via U.S. mail or fax. Please submit protests or comments to this advice letter to EDTariffUnit@cpuc.ca.gov and PGETariffs@pge.com\*\*\***

Any party wishing to protest this submittal may do so by letter sent via U.S. mail, facsimile or E-mail, no later than October 7, 2020, which is 20 days after the date of this submittal. Protests must be submitted to:

CPUC Energy Division  
ED Tariff Unit  
505 Van Ness Avenue, 4<sup>th</sup> Floor  
San Francisco, California 94102

Facsimile: (415) 703-2200  
E-mail: EDTariffUnit@cpuc.ca.gov

Copies of protests also should be mailed to the attention of the Director, Energy Division, Room 4004, at the address shown above.

The protest shall also be sent to PG&E either via E-mail or U.S. mail (and by facsimile, if possible) at the address shown below on the same date it is mailed or delivered to the Commission:

Erik Jacobson  
Director, Regulatory Relations  
c/o Megan Lawson  
Pacific Gas and Electric Company  
77 Beale Street, Mail Code B13U  
P.O. Box 770000  
San Francisco, California 94177

Facsimile: (415) 973-3582  
E-mail: [PGETariffs@pge.com](mailto:PGETariffs@pge.com)

Any person (including individuals, groups, or organizations) may protest or respond to an advice letter (General Order 96-B, Section 7.4). The protest shall contain the following information: specification of the advice letter protested; grounds for the protest; supporting factual information or legal argument; name, telephone number, postal address, and (where appropriate) e-mail address of the protestant; and statement that the protest was sent to the utility no later than the day on which the protest was submitted to the reviewing Industry Division (General Order 96-B, Section 3.11).

### **Effective Date**

Pursuant to General Order (GO) 96-B, Rule 5.2, this advice letter is submitted with a Tier 2 designation. PG&E requests that this Tier 2 advice submittal become effective on regular notice, October 17, 2020, which is 30 calendar days after the date of submittal.

### **Notice**

In accordance with General Order 96-B, Section IV, a copy of this advice letter is being sent electronically and via U.S. mail to parties shown on the attached list and the parties on the service list R.19-09-009. Address changes to the General Order 96-B service list should be directed to PG&E at email address [PGETariffs@pge.com](mailto:PGETariffs@pge.com). For changes to any other service list, please contact the Commission's Process Office at (415) 703-2021 or at [Process\\_Office@cpuc.ca.gov](mailto:Process_Office@cpuc.ca.gov). Send all electronic approvals to [PGETariffs@pge.com](mailto:PGETariffs@pge.com). Advice letter submittals can also be accessed electronically at: <http://www.pge.com/tariffs/>.

\_\_\_\_\_  
/S/

Erik Jacobson  
Director, Regulatory Relations

cc: Service List R.19-09-009



# ADVICE LETTER SUMMARY

## ENERGY UTILITY



MUST BE COMPLETED BY UTILITY (Attach additional pages as needed)

Company name/CPUC Utility No.: Pacific Gas and Electric Company (ID U39E)

Utility type:

☒ ELC ☐ GAS ☐ WATER  
☐ PLC ☐ HEAT

Contact Person: Kimberly Loo

Phone #: (415)973-4587

E-mail: PGETariffs@pge.com

E-mail Disposition Notice to: KELM@pge.com

### EXPLANATION OF UTILITY TYPE

ELC = Electric      GAS = Gas      WATER = Water  
PLC = Pipeline      HEAT = Heat

(Date Submitted / Received Stamp by CPUC)

Advice Letter (AL) #: 5952-E

Tier Designation: 2

Subject of AL: Implementation Plan for Data Portal to Help Local and Tribal Governments Identify Resiliency Opportunities in Compliance with D.20-06-017

Keywords (choose from CPUC listing): Compliance

AL Type: ☐ Monthly ☐ Quarterly ☐ Annual ☒ One-Time ☐ Other:

If AL submitted in compliance with a Commission order, indicate relevant Decision/Resolution #: D.20-06-017

Does AL replace a withdrawn or rejected AL? If so, identify the prior AL: No

Summarize differences between the AL and the prior withdrawn or rejected AL:

Confidential treatment requested? ☐ Yes ☒ No

If yes, specification of confidential information:

Confidential information will be made available to appropriate parties who execute a nondisclosure agreement. Name and contact information to request nondisclosure agreement/ access to confidential information:

Resolution required? ☐ Yes ☒ No

Requested effective date: 10/17/20

No. of tariff sheets: 0

Estimated system annual revenue effect (%): N/A

Estimated system average rate effect (%): N/A

When rates are affected by AL, include attachment in AL showing average rate effects on customer classes (residential, small commercial, large C/I, agricultural, lighting).

Tariff schedules affected: N/A

Service affected and changes proposed<sup>1</sup>: N/A

Pending advice letters that revise the same tariff sheets: N/A

<sup>1</sup>Discuss in AL if more space is needed.

**Protests and all other correspondence regarding this AL are due no later than 20 days after the date of this submittal, unless otherwise authorized by the Commission, and shall be sent to:**

CPUC, Energy Division  
Attention: Tariff Unit  
505 Van Ness Avenue  
San Francisco, CA 94102  
Email: [EDTariffUnit@cpuc.ca.gov](mailto:EDTariffUnit@cpuc.ca.gov)

Name: Erik Jacobson, c/o Megan Lawson  
Title: Director, Regulatory Relations  
Utility Name: Pacific Gas and Electric Company  
Address: 77 Beale Street, Mail Code B13U  
City: San Francisco, CA 94177  
State: California Zip: 94177  
Telephone (xxx) xxx-xxxx: (415)973-2093  
Facsimile (xxx) xxx-xxxx: (415)973-3582  
Email: [PGETariffs@pge.com](mailto:PGETariffs@pge.com)

Name:  
Title:  
Utility Name:  
Address:  
City:  
State: District of Columbia Zip:  
Telephone (xxx) xxx-xxxx:  
Facsimile (xxx) xxx-xxxx:  
Email:

Clear Form

**PG&E Gas and Electric  
Advice Submittal List  
General Order 96-B, Section IV**

AT&T	Downey & Brand	Pioneer Community Energy
Albion Power Company	East Bay Community Energy	
	Ellison Schneider & Harris LLP	Redwood Coast Energy Authority
Alta Power Group, LLC	Energy Management Service	Regulatory & Cogeneration Service, Inc.
Anderson & Poole	Engineers and Scientists of California	SCD Energy Solutions
		San Diego Gas & Electric Company
Atlas ReFuel		
BART	GenOn Energy, Inc.	SPURR
	Goodin, MacBride, Squeri, Schlotz & Ritchie	San Francisco Water Power and Sewer
Barkovich & Yap, Inc.	Green Power Institute	Sempra Utilities
California Cotton Ginners & Growers Assn	Hanna & Morton	
California Energy Commission	ICF	Sierra Telephone Company, Inc.
California Public Utilities Commission	IGS Energy	Southern California Edison Company
Carpine	International Power Technology	Southern California Gas Company
	Intestate Gas Services, Inc.	Spark Energy
Cameron-Daniel, P.C.	Kelly Group	Sun Light & Power
Casner, Steve	Ken Bohn Consulting	Sunshine Design
Cenergy Power	Keyes & Fox LLP	Tecogen, Inc.
Center for Biological Diversity	Leviton Manufacturing Co., Inc.	TerraVerde Renewable Partners
		Tiger Natural Gas, Inc.
Chevron Pipeline and Power		
City of Palo Alto	Los Angeles County Integrated	TransCanada
	Waste Management Task Force	Utility Cost Management
City of San Jose	MRW & Associates	Utility Power Solutions
Clean Power Research	Manatt Phelps Phillips	Water and Energy Consulting Wellhead
Coast Economic Consulting	Marin Energy Authority	Electric Company
Commercial Energy	McKenzie & Associates	Western Manufactured Housing
Crossborder Energy		Communities Association (WMA)
Crown Road Energy, LLC	Modesto Irrigation District	Yep Energy
Davis Wright Tremaine LLP	NLine Energy, Inc.	
Day Carter Murphy	NRG Solar	
Dept of General Services	Office of Ratepayer Advocates	
Don Pickett & Associates, Inc.	OnGrid Solar	
Douglass & Liddell	Pacific Gas and Electric Company	
	Peninsula Clean Energy	