

Business Demand Response Programs

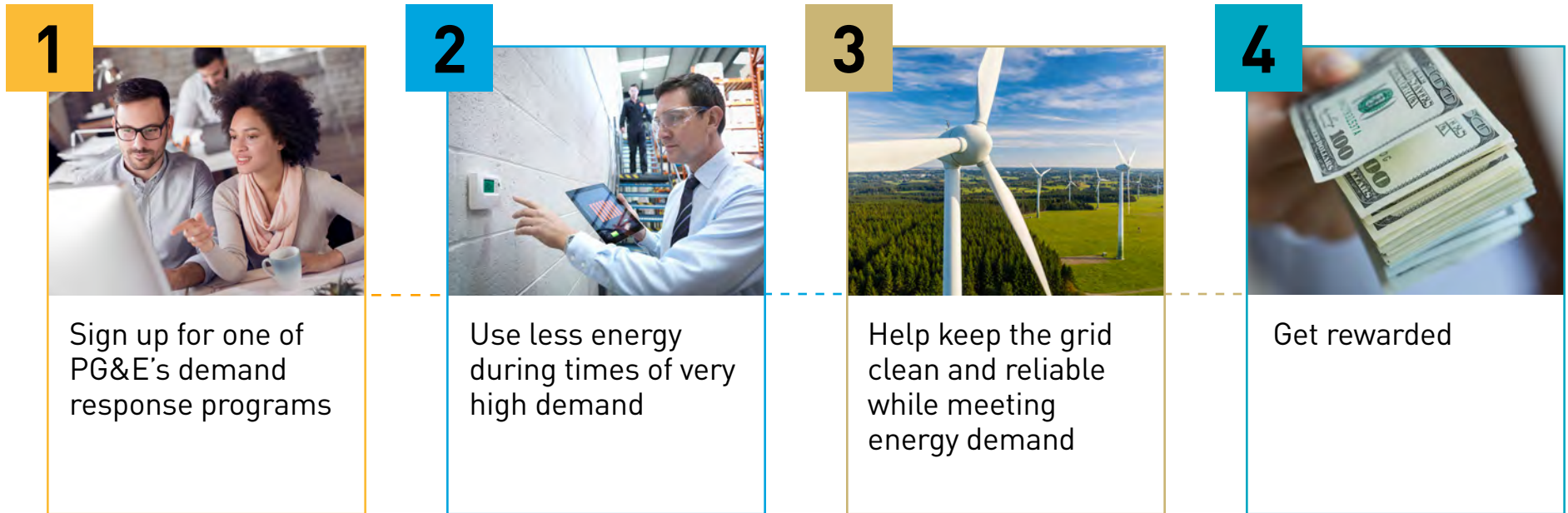
Get rewarded for helping to
keep the grid clean and reliable



By adjusting your energy usage at key times, you can help keep the grid clean and reliable. And get rewarded for it, too.

Business and Agriculture customers like you are earning incentives while helping to keep the energy grid clean and reliable during times of high energy demand. Here's how it works.

It's easy to earn incentives



This e-book has details on each of PG&E's business demand response programs, and also a comparison chart that will help you see your options side by side to make the best choice for your business.



Here's How
It Works

Peak
Day
Pricing

Base
Interruptible
Program

Capacity
Bidding
Program

Emergency
Load Reduction
Program

Automated
Demand
Response

Program
Comparison
Chart

Next
Steps

Peak Day Pricing

Earn a discount on summer electricity rates in exchange for higher prices during 9 to 15 Peak Day Pricing Event Days per year.*

Peak Day Pricing works in conjunction with your time-of-use rate plan to encourage energy conservation when demand is higher, typically on a handful of the hottest summer days each year.

[Compare programs](#)

[Learn more](#)

*Effective summer rates are lower after Peak Day Pricing credits have been applied, but effective rates are higher during Peak Day Pricing Event hours.



Availability	Jun-Sept from 4-9 p.m.
Event Duration	5 hours per event 9-15 Event Days per year
Event Notification	Day-Ahead
Eligibility	Must be on a PG&E Business time-of-use rate plan with 4-9 p.m. peak hours, or PG&E Agricultural time-of-use rate plan with 5-8 p.m. peak hours
Disqualifiers	Must not be enrolled in the Base Interruptible Program or Capacity Bidding Program
Enrollment Channel	Direct with PG&E



Here's How
It Works

**Peak
Day
Pricing**

Base
Interruptible
Program

Capacity
Bidding
Program

Emergency
Load Reduction
Program

Automated
Demand
Response

Program
Comparison
Chart

Next
Steps

Base Interruptible Program

Earn a monthly incentive for being available to reduce energy consumption to prescribed levels when needed.

The Base Interruptible Program is a reliability program that provides day-of-load reduction when PG&E or the California Independent System Operator (CAISO) issues a curtailment notice. In 2022, program incentives were increased to a maximum value of \$11.50/kW during summer months.

When events are called, you'll get a 30-minute notice to reduce your load down to or below your prescribed level so you can avoid accruing an excess energy charge.

[Compare programs](#)

[Learn more](#)



Availability	Year-Round 24x7
Event Duration	1 event per day max 6 hours per event max 10 event days per month max or 180 event hours per year max
Event Notification	Day-Of (30 minutes)
Eligibility	Must be on a PG&E non-residential electric time-of-use rate plan 100 kW or higher maximum demand during peak time-of-use hours Subject to a pre-enrollment qualification process to demonstrate ability to participate and must provide load reduction plan
Disqualifiers	Full Standby Rate schedules AG-R and AG-V
Enrollment Channel	Direct with PG&E 3rd Party Aggregator



Here's How
It Works

Peak
Day
Pricing

Base
Interruptible
Program

Capacity
Bidding
Program

Emergency
Load Reduction
Program

Automated
Demand
Response

Program
Comparison
Chart

Next
Steps

Capacity Bidding Program

Create a plan that allows you more flexibility in deciding how you earn incentives by reducing energy usage when needed.

The Capacity Bidding Program lets you work with PG&E Third Party providers to create a plan that suits your business’s unique needs. For example, choose the number of energy saving events per month, and the event duration.

[Compare programs](#)

[Learn more](#)



Availability	May-Oct Weekdays, 1-9 p.m. Weekend option available
Event Duration	6 events per month max or 30 event hours per month max
Event Notification	Day-Ahead
Eligibility	Aggregator specified
Disqualifiers	Wholesale power customer (e.g. WAPA) Full Standby Rate schedule NEMCCSF
Enrollment Channel	3rd Party Aggregator

Emergency Load Reduction Program

Receive financial incentives for reducing energy use during times of high grid stress and emergencies.

The Emergency Load Reduction Program is a pilot program that offers financial incentives to reduce your energy usage during times of high grid stress and emergencies. In 2022, the program incentive was increased to \$2/kWh for load reduction during an event.

Once enrolled, your participation in events is voluntary and there's no penalty for not participating.

[Compare programs](#)

[Learn more](#)



Availability	May-Oct from 4-9 p.m.
Event Duration	5 hours per event max 60 event hours per year max
Event Notification	Day-Ahead or Day-Of
Eligibility	1 kW load drop potential
Disqualifiers	Must not be enrolled in another CAISO integrated/supply-side Demand Response program, with the exception of the Base Interruptible Program.
Enrollment Channel	Direct with PG&E 3rd Party Aggregator



Here's How
It Works

Peak
Day
Pricing

Base
Interruptible
Program

Capacity
Bidding
Program

Emergency
Load Reduction
Program

Automated
Demand
Response

Program
Comparison
Chart

Next
Steps

Automated Demand Response

Save energy and money by automating the energy controls of your choice.

Automated Demand Response is the easiest way to boost your savings while helping to manage peak loads, no matter what industry sector you're in. When you enroll in select energy incentive programs, you'll also be eligible for equipment rebates and added incentives through Automated Demand Response, such as technology incentives up to \$200/kW of calculated load reduction.

[Compare programs](#)

[Learn more](#)



Eligibility	Must be enrolled in an eligible PG&E Demand Response program: Peak Day Pricing Capacity Bidding Program Demand Response Auction Mechanism
Enrollment Channel	Apply with PG&E



Here's How
It Works

Peak
Day
Pricing

Base
Interruptible
Program

Capacity
Bidding
Program

Emergency
Load Reduction
Program

**Automated
Demand
Response**

Program
Comparison
Chart

Next
Steps

Business Demand Response Program Comparison Chart

	Peak Day Pricing	Base Interruptible Program	Capacity Bidding Program	Emergency Load Reduction Program	Automated Demand Response
Availability	Jun-Sept 4-9 p.m.		May-Oct Weekdays, 1-9 p.m. Weekend option available	May-Oct 4-9 p.m.	N/A
Event Duration	5 hours per event 9-15 Event Days per year	1 event per day max 6 hours per event max 10 event days per month max or 180 event hours per year max	6 events per month max or 30 event hours per month max		N/A
Event Notification	Day-Ahead	Day-Of (30 minutes)	Day-Ahead		N/A
Eligibility	Must be on a PG&E Business time-of-use rate plan with 4-9 p.m. peak hours, or PG&E Agricultural time-of-use rate plan with 5-8 p.m. peak hours	Must be on a PG&E non-residential electric time-of-use rate plan 100 kW or higher maximum demand during peak time-of-use hours Subject to a pre-enrollment qualification process to demonstrate ability to participate and must provide load reduction plan	Aggregator specified	1 kW load drop potential	Must be enrolled in an eligible PG&E Demand Response program: Peak Day Pricing Capacity Bidding Program Demand Response Auction Mechanism
Disqualifiers	Must not be enrolled in the Base Interruptible Program or Capacity Bidding Program		Wholesale power customer (e.g. WAPA) Full Standby Rate schedule NEMCCSF	Must not be enrolled in another CAISO integrated/supply-side Demand Response program, with the exception of the Base Interruptible Program.	None
Enrollment Channel	Direct with PG&E	Direct with PG&E 3rd Party Aggregator	3rd Party Aggregator	Direct with PG&E 3rd Party Aggregator	Apply with PG&E



Here's How It Works

Peak Day Pricing

Base Interruptible Program

Capacity Bidding Program

Emergency Load Reduction Program

Automated Demand Response

Program Comparison Chart

Next Steps

Business Demand Response Programs

We're here to answer any questions you may have

Contact your Customer Relationship Manager or visit pge.com/demandresponse to learn more.

For additional business resources, go to pge.com/brc.



Here's How
It Works

Peak
Day
Pricing

Base
Interruptible
Program

Capacity
Bidding
Program

Emergency
Load Reduction
Program

Automated
Demand
Response

Program
Comparison
Chart

Next
Steps