

# Save money with PG&E rebates



## PG&E will pay you to reduce your energy costs! Yes, you read that correctly.

Take advantage of cash-back rebates and gain a competitive advantage by reducing operating costs while conserving precious resources and improving work conditions for your employees. What could be better?

| PG&E Pipe Insulation Rebates |                 |
|------------------------------|-----------------|
| Hot water pipe insulation    | \$3/linear foot |
| Steam pipe insulation        | \$3/linear foot |
| Fitting insulation           | \$3/fitting     |

| Benefits of pipe insulation                                     |
|---|
| Less water and energy use means lower operating cost            |
| Rebates from PG&E reduce cost of insulating                     |
| Efficient pipe insulation means less demand on boiler equipment |
| Improved work conditions  |

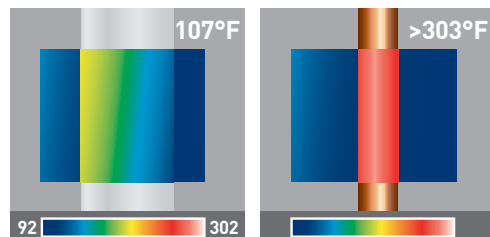
More details on rebates can be found at [pge.com/businessrebates](http://pge.com/businessrebates)

## Pipe Insulation

Stop throwing money away with long runs of uninsulated pipes. A significant amount of heat energy is lost through hot water and steam pipes that are not insulated.

Because your business uses these pipes for so many hours every day, insulating them would produce significant energy savings and, therefore, lower energy costs. Even better, PG&E offers a rebate to help you purchase the insulation.

Many standard businesses have about 200 feet of uninsulated hot water or steam pipe.  
Insulation can save as much as \$2,038 in avoided energy costs on an annual basis.



Insulated pipe

Pipe without insulation



Together, Building a Better Future

## PG&E Pipe Insulation Rebates—As of May 1, 2018

| Measure Code   | Pipe Diameter   | Rebate/ Unit Measure |
|--|---|----------------------|
| <b>Pipe diameter is less than or equal to 1 inch</b>                       |   |                      |
| PR051  | 1 inch insulation layer, ≤1 inch pipe, ≤15 psig steam, outdoor          | \$3/linear foot      |
| PR052  | 1 inch insulation layer, ≤1 inch pipe, >15 psig steam, outdoor          | \$3/linear foot      |
| PR053  | 1 inch insulation layer, ≤1 inch pipe, hot water, outdoor               | \$3/linear foot      |
| PR060  | 1 inch insulation layer, ≤1 inch pipe, ≤15 psig steam, indoor           | \$3/linear foot      |
| PR061  | 1 inch insulation layer, ≤1 inch pipe, >15 psig steam, indoor           | \$3/linear foot      |
| PR062  | 1 inch insulation layer, ≤1 inch pipe, hot water, indoor                | \$3/linear foot      |
| PR069  | Fitting insulation ≤1 inch pipe, ≤15 psig steam, indoor                 | \$3/fitting          |
| PR070  | Fitting insulation ≤1 inch pipe, >15 psig steam, indoor                 | \$3/fitting          |
| PR071  | Fitting insulation ≤1 inch pipe, hot water, indoor                      | \$3/fitting          |
| PR078  | Fitting insulation, ≤1 inch pipe, ≤15 psig steam, outdoor               | \$3/fitting          |
| PR079  | Fitting insulation, ≤1 inch pipe, >15 psig steam, outdoor               | \$3/fitting          |
| PR080  | Fitting insulation, ≤1 inch pipe, hot water, outdoor                    | \$3/fitting          |
| <b>Pipe diameter larger than 1 inch and less than or equal to 4 inches</b> |   |                      |
| PR057  | 1 inch insulation layer, 1 inch < pipe ≤4 inch, ≤15 psig steam, outdoor | \$3/linear foot      |
| PR058  | 1 inch insulation layer, 1 inch < pipe ≤4 inch, >15 psig steam, outdoor | \$3/linear foot      |
| PR059  | 1 inch insulation layer, 1 inch < pipe ≤4 inch, hot water, outdoor      | \$3/linear foot      |
| PR066  | 1 inch insulation layer, 1 Inch < pipe ≤4 inch, ≤15 psig steam, indoor  | \$3/linear foot      |
| PR067  | 1 inch insulation layer, 1 Inch < pipe ≤4 inch, >15 psig steam, indoor  | \$3/linear foot      |
| PR068  | 1 inch insulation layer, 1 Inch < pipe ≤4 Inch, hot water, indoor       | \$3/linear foot      |
| PR075  | Fitting insulation 1 inch < pipe ≤4 inch, ≤15 psig steam, indoor        | \$3/fitting          |
| PR076  | Fitting insulation 1 inch < pipe ≤4 inch, >15 psig steam, indoor        | \$3/fitting          |
| PR077  | Fitting insulation 1 inch < pipe ≤4 inch, hot water, indoor             | \$3/fitting          |
| PR084  | Fitting insulation, 1 inch < pipe ≤4 inch, ≤15 psig steam, outdoor      | \$3/fitting          |
| PR085  | Fitting insulation, 1 inch < pipe ≤4 inch, >15 psig steam, outdoor      | \$3/fitting          |
| PR086  | Fitting insulation, 1 inch < pipe ≤4 inch, hot water, outdoor           | \$3/fitting          |
| <b>Pipe diameter is greater than 4 inches</b>                              |   |                      |
| PR054  | 1 inch insulation layer, >4 inch pipe, ≤15 psig steam, outdoor          | \$3/linear foot      |
| PR055  | 1 inch insulation layer, >4 inch pipe, >15 psig steam, outdoor          | \$3/linear foot      |
| PR056  | 1 inch insulation layer, >4 inch pipe, hot water, outdoor               | \$3/linear foot      |
| PR063  | 1 inch insulation layer, >4 inch pipe, ≤15 psig steam, indoor           | \$3/linear foot      |
| PR064  | 1 inch insulation layer, >4 inch pipe, >15 psig steam, indoor           | \$3/linear foot      |
| PR065  | 1 inch insulation layer, >4 inch pipe, hot water, indoor                | \$3/linear foot      |
| PR072  | Fitting insulation >4 inch pipe, ≤15 psig steam, indoor                 | \$3/fitting          |
| PR073  | Fitting insulation >4 inch pipe, >15 psig steam, indoor                 | \$3/fitting          |
| PR074  | Fitting insulation >4 inch pipe, hot water, indoor                      | \$3/fitting          |
| PR081  | Fitting insulation, >4 inch pipe, ≤15 psig steam, outdoor               | \$3/fitting          |
| PR082  | Fitting insulation, >4 inch pipe, >15 psig steam, outdoor               | \$3/fitting          |
| PR083  | Fitting insulation, >4 inch pipe, hot water, outdoor                    | \$3/fitting          |

Insulation required by California Building Code (Title 24) or employee safety laws (Occupational Safety and Health Administration: OSHA) is not eligible for a rebate.