

This guide will provide information to help you select compatible trees for the right place on your property. Find out how you can help keep the lights on and your community safe by ensuring your trees have the space they need to grow.

Commitment to customer safety

We are taking steps every day to improve the safety and reliability of our electric system, which serves people throughout Northern and Central California.

This includes working together with our customers and communities to manage vegetation that is located near power lines, to reduce power outages, promote safety and comply with required state and federal vegetation clearances.

Learn more

For more information and resources to help you plant the right tree in the right place, visit pge.com/righttreerightplace.

For information regarding fire resistant landscaping, visit readyforwildfire.org or firesafecouncil.org.

For a full list of suitable California tree selections, visit selecttree.calpoly.edu.

Replanting safely

Right tree, right place



Replanting
safely

Right tree,
right place



This guide will provide information to help you select compatible trees for the right place on your property. Find out how you can help keep the lights on and your community safe by ensuring your trees have the space they need to grow.

Commitment to customer safety

We are taking steps every day to improve the safety and reliability of our electric system, which serves people throughout Northern and Central California.

This includes working together with our customers and communities to manage vegetation that is located near power lines, to reduce power outages, promote safety and comply with required state and federal vegetation clearances.

Carefully consider your trees' surroundings

Trees need space to grow both above and below ground. Proper tree and site selection ensures beauty and pleasure for years to come.

A Planting outside of high fire-threat areas

Nothing is more important than keeping our customers and communities safe. As a result, we have enhanced our routine vegetation management work to meet new vegetation and fire safety standards that require greater clearances between trees, limbs and power lines.

Be sure to use small trees when planting near power lines. Plant larger, house-shading trees far from power lines.



When planting near distribution lines:

Select only small trees that will grow no taller than 25 feet at maturity.



When planting near transmission lines:

Plant only low-growing shrubs under the wire zone and only grasses within the area directly below the tower. Along the border of the transmission line right-of-way, plant only small trees no taller than 10 feet.

B Planting within high fire-threat areas

Our efforts not only reduce wildfire threats but help reduce power outages. You play a vital role to ensure that the right tree is safely planted in the right place. To find out if you are in a high fire-threat area visit cpuc.ca.gov/FireThreatMaps and follow our planting guidelines to support safety clearances.

Planting zone standards:

- **Small zone:** Within 12 feet of the pole, plant only low-growing plants less than 12 inches at maturity that have high moisture and low sap content.
- **Medium zone:** Within 12 to 50 feet of the pole, plant trees no taller than 40 feet at maturity.
- **Tall zone:** At least 50 feet away from the pole, plant trees taller than 40 feet at maturity.

Safety tip for planting:

Know what's below

To remain safe while replanting trees, shrubs or flowers, **call 811 at least two days before digging.** Workers will visit your property to mark the location of gas lines or other underground utilities so you can avoid them.

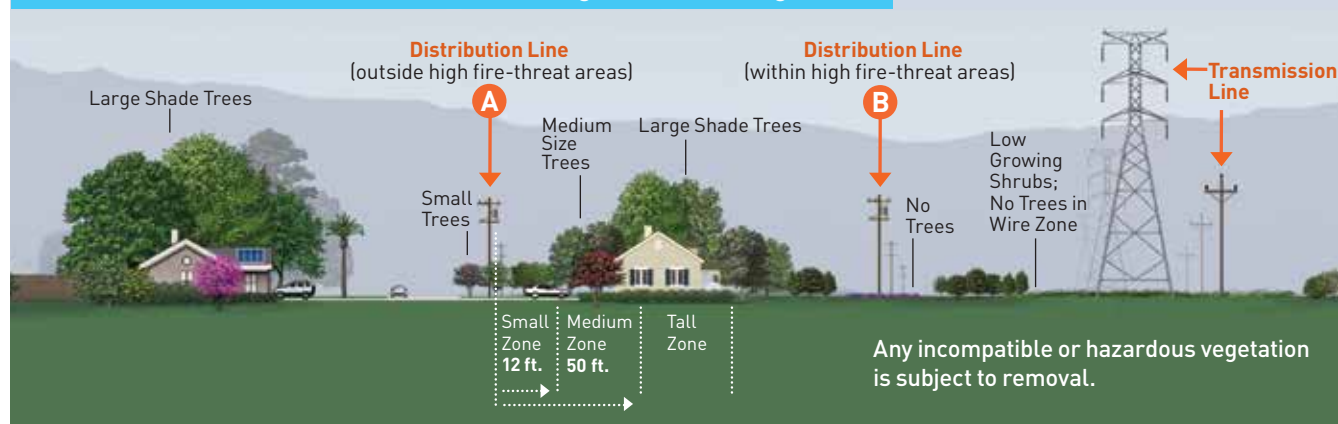


Contact us

We are here to help you select the right trees before planting.

If you would like to schedule an appointment with one of our tree care professionals, or if you have questions about power line-perfect trees, please call 1 800 743 5000.

Avoid Conflicts with Power Lines—Plant the Right Tree in the Right Place



Learn more

For more information and resources to help you plant the right tree in the right place, visit pge.com/righttreerightplace.

For information regarding fire resistant landscaping, visit readyforwildfire.org or firesafecouncil.org.

For a full list of suitable California tree selections, visit selecttree.calpoly.edu.