

Color by numbers

Color the picture below and use the numbers as a guide.
Have fun and stay safe this Arbor Day.

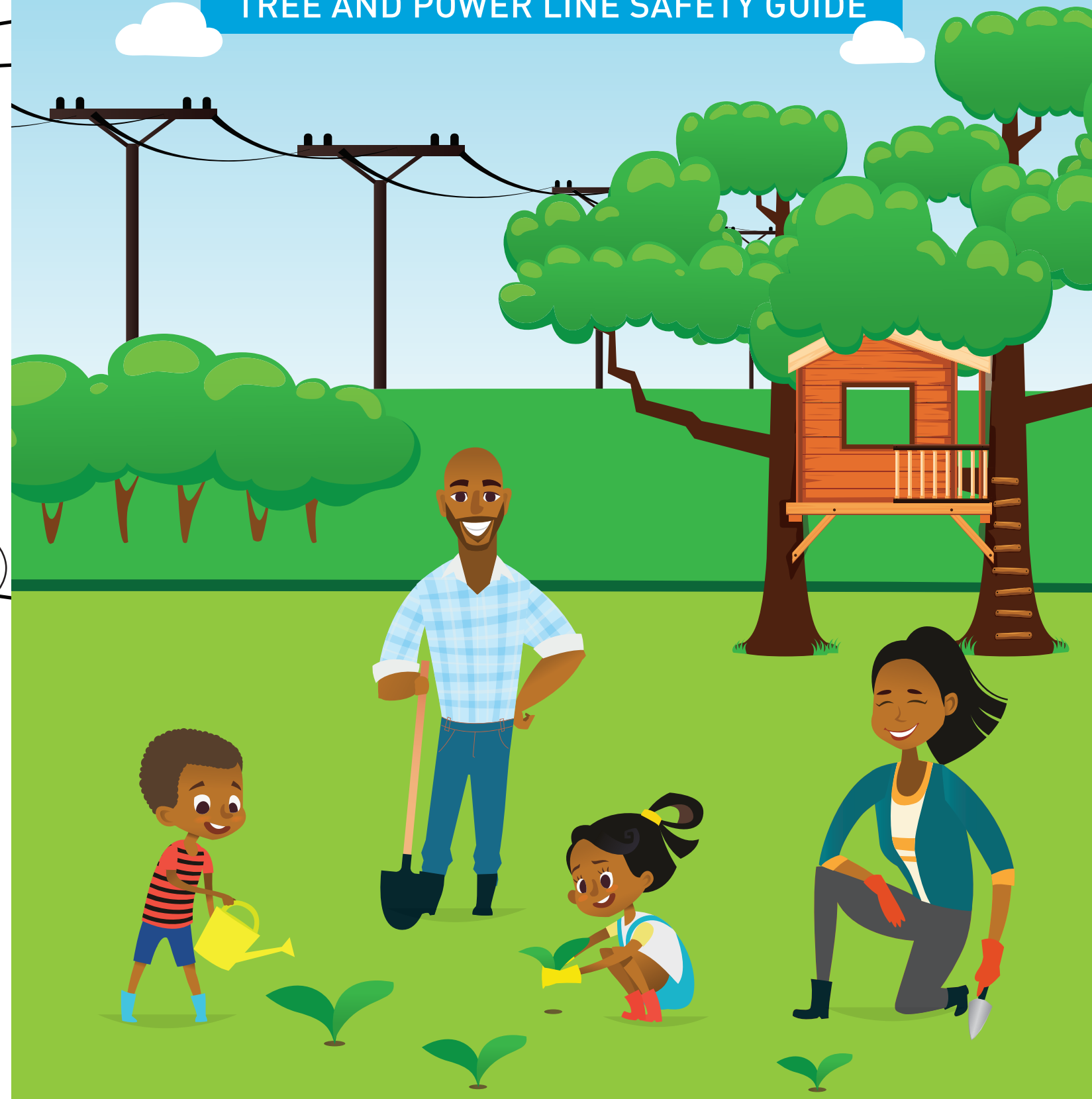


Color Chart					
1	Gray	4	Blue	7	Black
2	Green	5	Yellow	8	Peach
3	Brown	6	Purple	9	Red



Be safe on Arbor Day

TREE AND POWER LINE SAFETY GUIDE



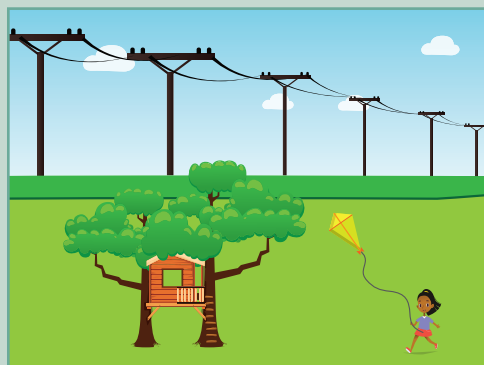
Plan before you plant

Mind the lines

You may see power lines above your head. PG&E uses these lines to bring the electricity that runs our lights, fridges and even TVs. Trees are fun but shouldn't grow too close to power lines. Stay safe by planting the right tree in the right place.

Look up

If you and your family are going to plant a tree, keep it away from power lines. Read each sentence and look at the picture. If the picture is safe, draw a circle. If it's unsafe, draw an X.



Keep at least 10 feet away from power lines to stay safe. Keep kites, balloons, ladders and tools away.



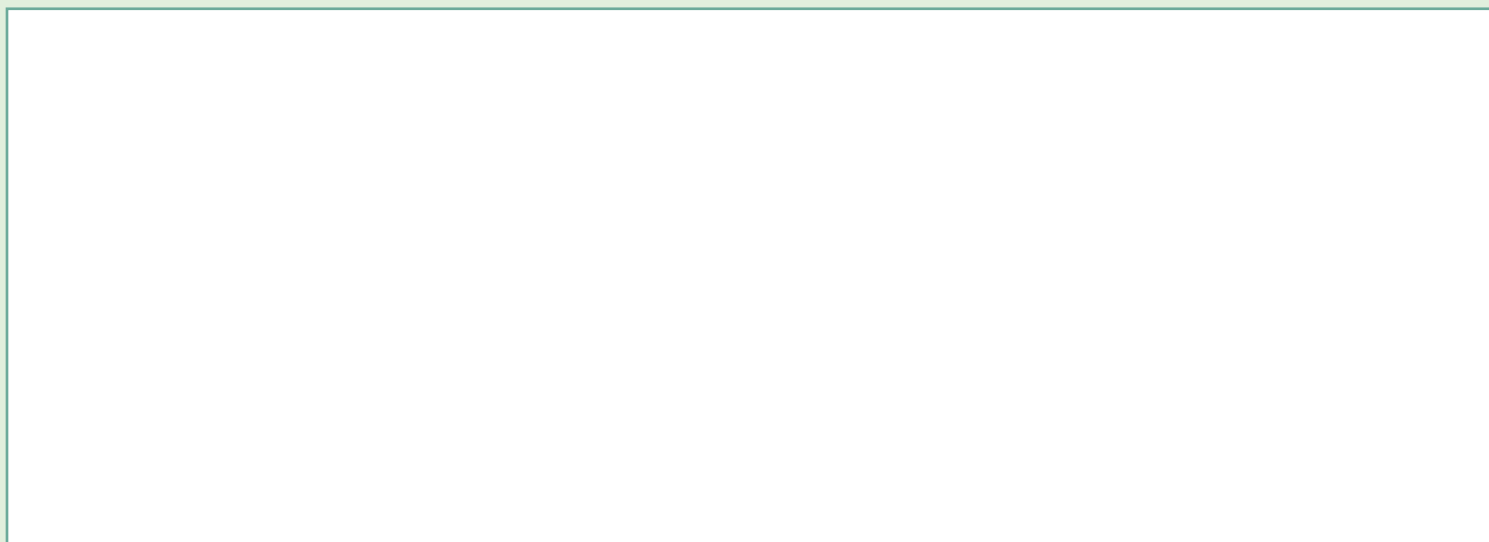
Trees and power lines don't mix. Never climb a tree that's too close to a power line.



Stay far away if you see a power line on the ground. Do not touch it. Ask an adult to call 9-1-1 right away. Then call PG&E.

Arbor Day fun

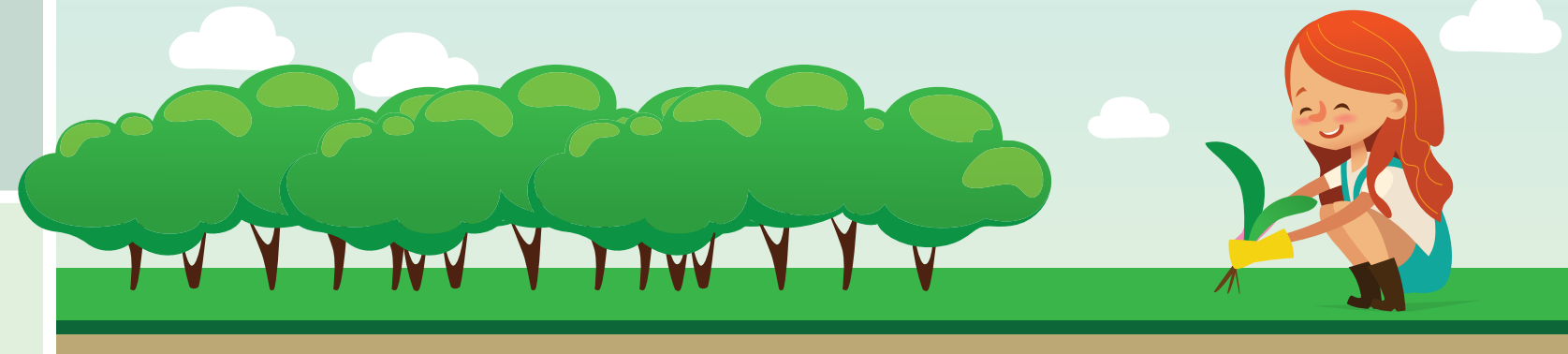
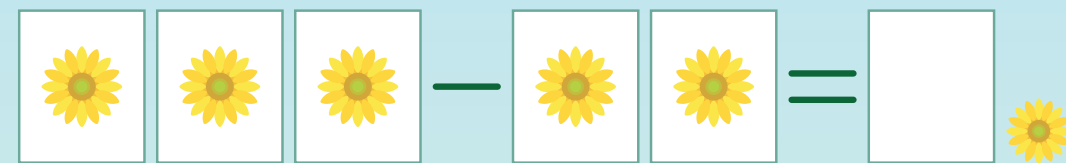
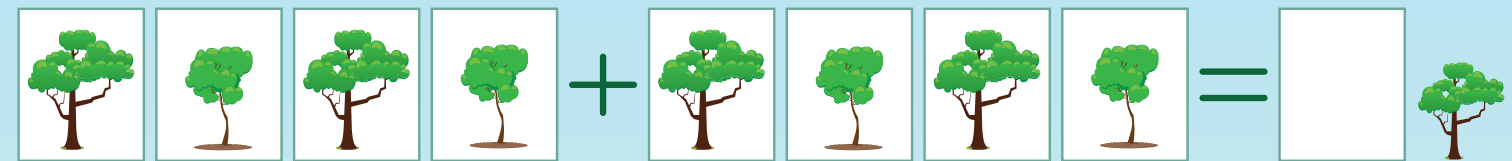
Draw a picture of your yard, a park or your school. Be sure to draw any power lines too. Then, show us where you would plant a tree this Arbor Day.



Know what's above and below

Call 8-1-1 at least two weekdays before you dig. Workers will mark power lines, gas pipes and other wires under the ground with flags, wood stakes or paint. Then, you can stay away from these lines when you plant.

Add or subtract the pictures below to learn a safety tip.



Fill in the blanks

How can you stay safe? Write the missing vowels in each word to find out.

Pl_nt th_r_ght tr__
 _n th_r_ght pl_c_.



To learn more, visit pge.com/righttreerightplace