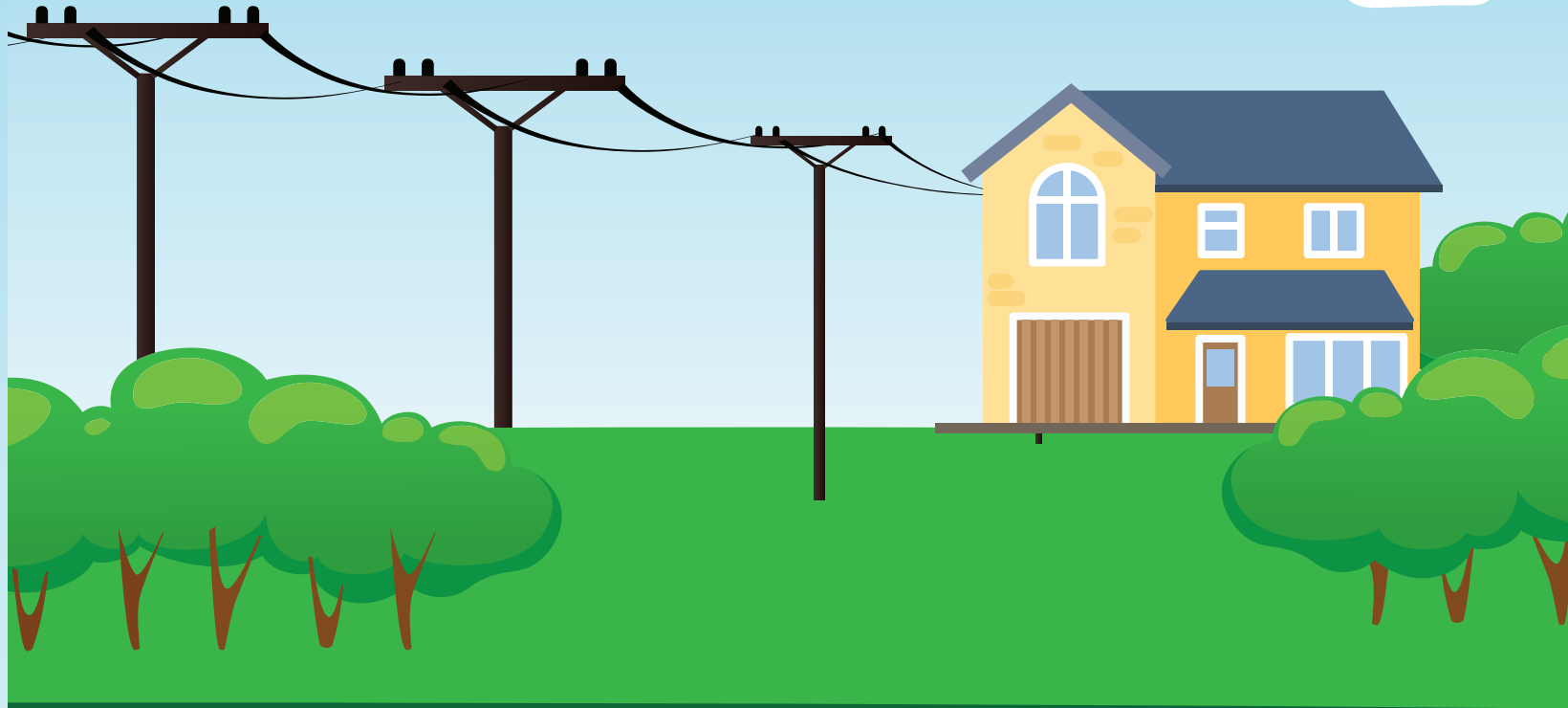
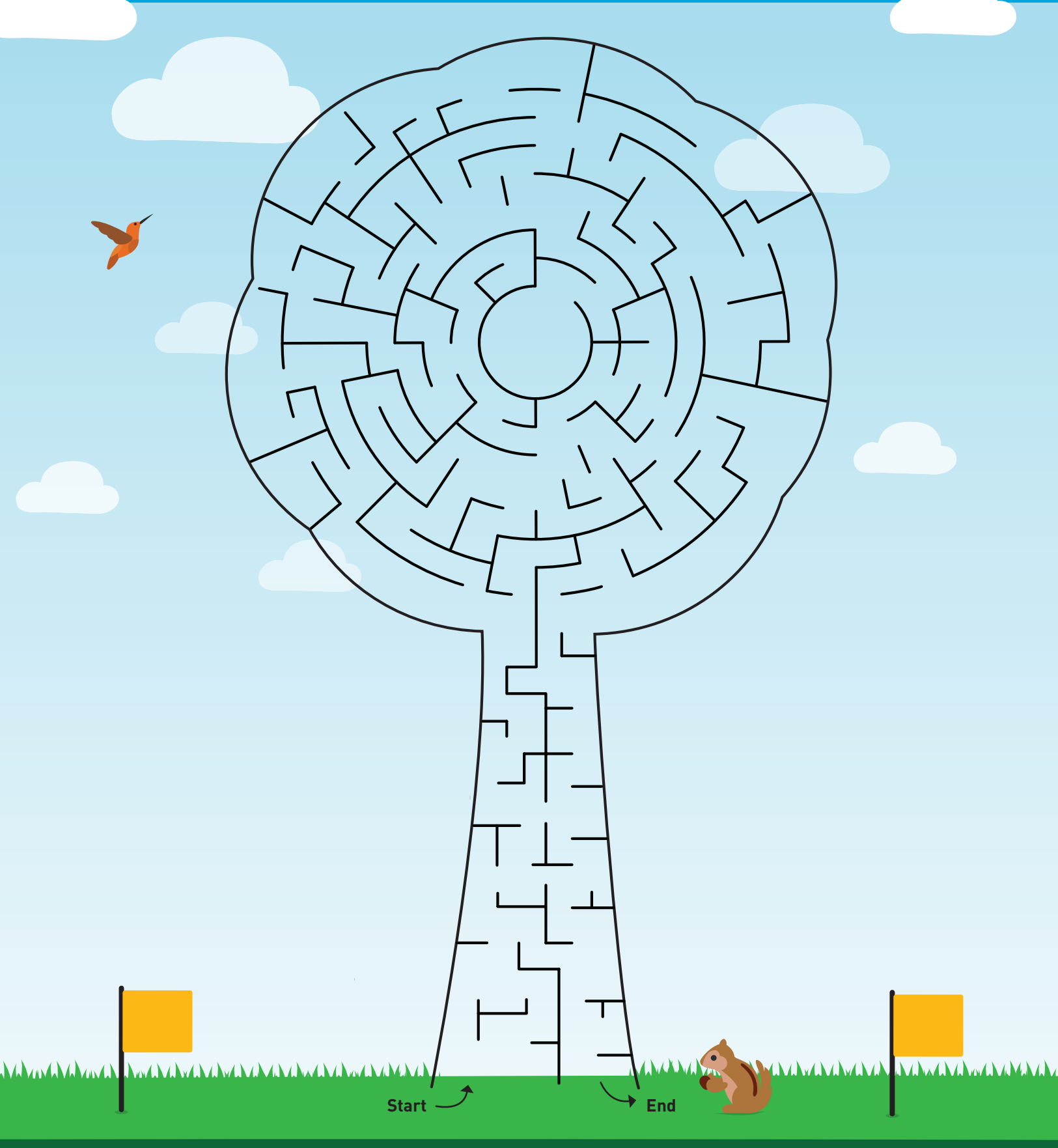


Tree maze

Trees are great. But digging without knowing what's under the ground is not safe. Solve the maze below and don't forget to call 8-1-1 before you dig.



Celebrate Arbor Day all year long
TREE AND POWER LINE SAFETY GUIDE



Plan before you plant



Mind the lines

We need power lines to run our lights, refrigerators and even TVs. Trees are great, but it's dangerous when their branches grow too close to power lines. You can stay safe by planting the right tree in the right place. When choosing a place for your tree, always avoid planting near power lines.

Tree and power line safety

Unscramble and fill in the words for important safety rules.

Stay at least 10 feet away from **WROPE** lines and do not **LIMCB** the poles. Never touch a power line on the **NUORGD**. Have a grown up call **9-1-1**, then call PG&E. Keep **DALDRSE**, tools, kites and balloons away. Make sure your parents build **ETER** houses far away and never climb a tree that's too **COESL**.

POWER, CLIMB, GROUND, LADDERS, TREE, CLOSE

- WROPE: _____
- LIMCB: _____
- NUORGD: _____
- DALDRSE: _____
- ETER: _____
- COESL: _____

Message decoder

Decode the message to learn about power line safety. Read across, then count up to find the letter.

10	G	S	T	F	P	K	C
9	P	D	S	U	O	L	N
8	H	D	L	G	J	X	D
7	Z	P	A	C	Y	J	E
6	E	R	T	B	S	N	E
5	I	D	F	S	E	T	J
4	Q	R	M	Y	S	S	J
3	H	A	Q	O	K	I	A
2	M	D	J	K	A	G	D
1	D	S	N	W	F	N	X
	a	b	c	d	e	f	g



a9, c8, e2, g9, f5

f5, b4, g6, g6, e6

e2, d1, e2, d4

d10, b4, d3, a2

a9, d3, d1, g6, b4

c8, a5, c1, g6, e6

PLANT TREES AWAY FROM POWER LINES

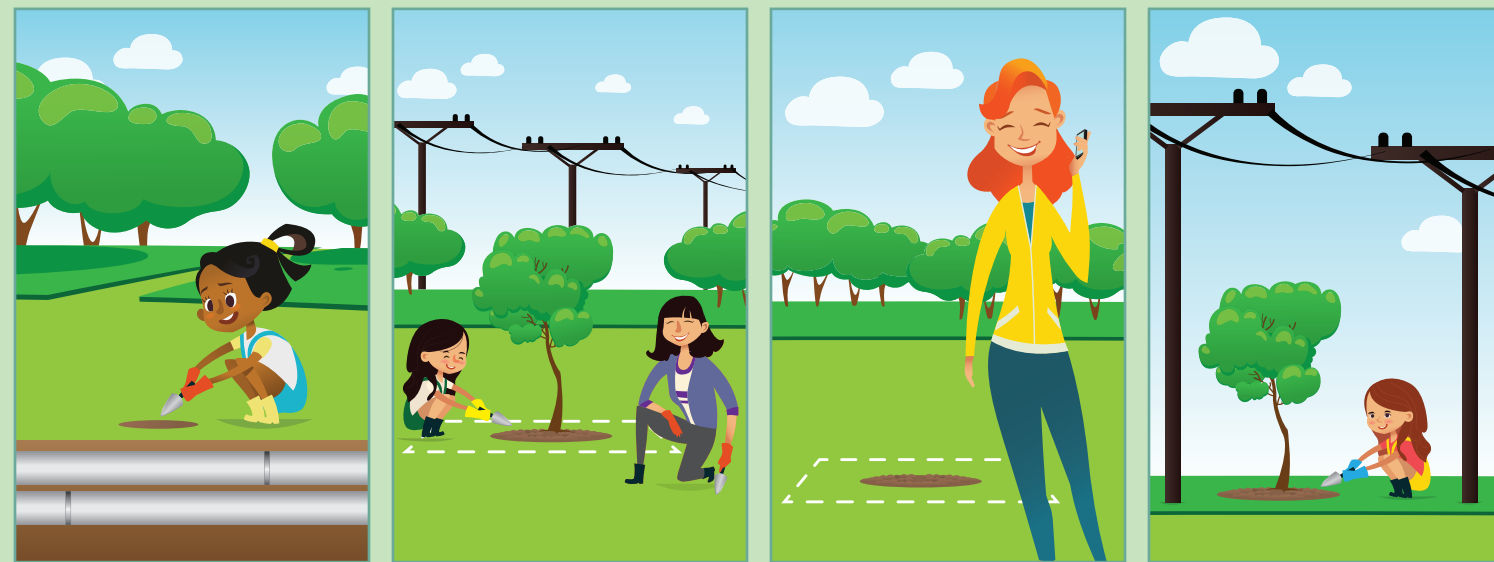
Know what's below

Sometimes you can't see PG&E's power lines because they are below the ground. Hitting one can be very dangerous, so always call **8-1-1** at least two weekdays before you dig. Workers will mark power lines, gas pipes and other wires with flags, wood stakes or paint. Avoid these lines when you dig to keep you and your neighbors safe.



Test your knowledge

Planting the right tree in the right place means staying away from power lines above and below the ground. Circle the safe choices.



Tell us your Arbor Day story

Fill in the blanks below to create a fun Arbor Day story – and don't forget these safety tips.

The first Arbor Day in the _____ was celebrated on April 10, 1872. On that day, about 1 million _____

_____ were planted. Today, we _____ trees for a whole week in California.

There are many ways to join the _____. You can _____ trees at your local _____

or help your parents _____. Planting trees can make your _____ look _____.
But it's _____ to know what's below so you can avoid power lines under the ground when you _____.

Be sure to call **8-1-1** at least two days before you dig to stay safe. Workers will mark _____

underground pipes and wires with _____ so you can avoid them. For more _____

about planting trees safely, visit pge.com/righttreerightplace.