



COMMUNITY WILDFIRE SAFETY PROGRAM WINTER PROGRESS UPDATE

DATA AS OF
12/31/2021

In 2021, we strengthened and improved our electric system through our Community Wildfire Safety Program. Our wildfire safety efforts will continue to evolve in 2022 for the safety of our customers and communities.

2021 FOCUS AREAS:



Worked year-round and nonstop to improve Public Safety Power Shutoff (PSPS) outages for our customers and communities by providing more resources before, during and after outages



Continued to build a safer and more resilient electric grid by conducting undergrounding, hardening powerlines and installing sectionalizing devices



Reduced the potential for wildfires with Enhanced Powerline Safety Settings (EPSS) that adjust the sensitivity of our equipment to automatically turn off power if the system detects a problem



Exceeded state vegetation standards to manage trees and other vegetation located near powerlines that could have caused a wildfire or power outage

Planning for wildfire safety work in 2022 is currently underway and will be included in our Wildfire Mitigation Plan submitted in February.

Some of the measures included in this document are contemplated as additional precautionary measures intended to further reduce the risk of wildfires.

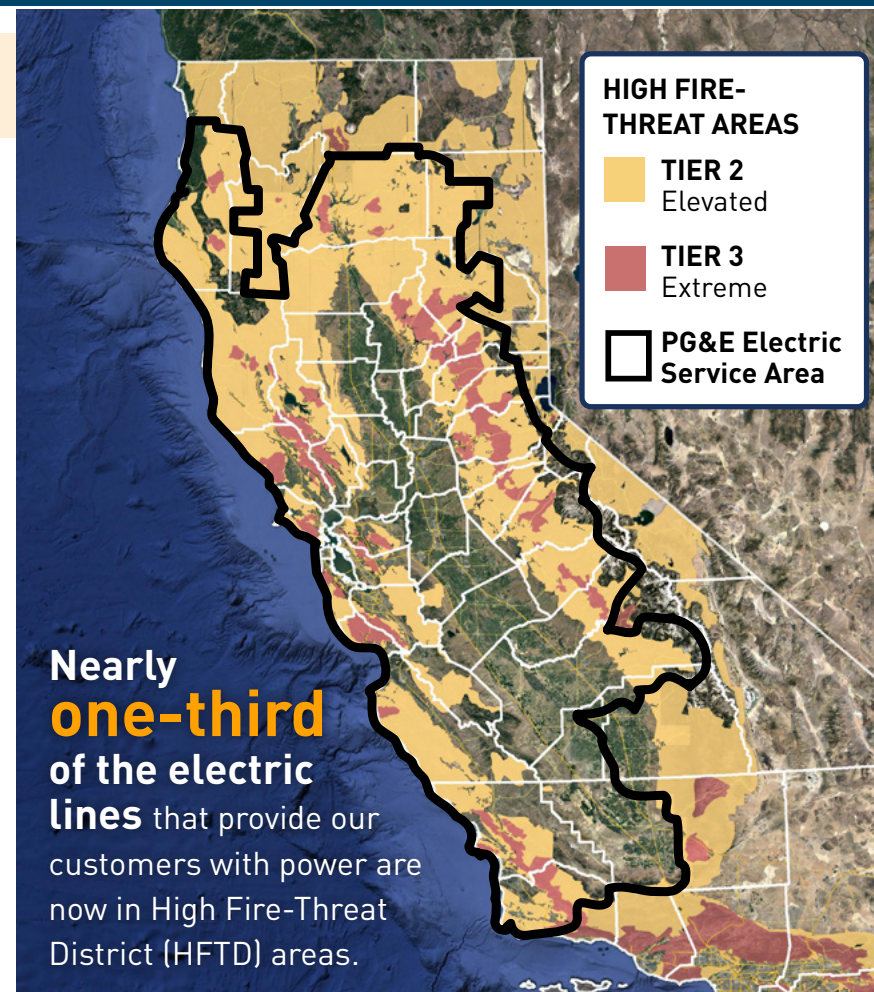
SEE PROGRESS IN YOUR COMMUNITY



To view 2021 year-end local progress, click the county name below*:

- | | | |
|----------------|-------------------|---------------|
| ■ Alameda | ■ Marin | ■ Santa Clara |
| ■ Alpine | ■ Mariposa | ■ Santa Cruz |
| ■ Amador | ■ Mendocino | ■ Shasta |
| ■ Butte | ■ Merced | ■ Sierra |
| ■ Calaveras | ■ Monterey | ■ Siskiyou |
| ■ Colusa | ■ Napa | ■ Solano |
| ■ Contra Costa | ■ Nevada | ■ Sonoma |
| ■ El Dorado | ■ Placer | ■ Stanislaus |
| ■ Fresno | ■ Plumas | ■ Sutter |
| ■ Glenn | ■ Sacramento | ■ Tehama |
| ■ Humboldt | ■ San Benito | ■ Trinity |
| ■ Kern | ■ San Francisco | ■ Tulare |
| ■ Kings | ■ San Joaquin | ■ Tuolumne |
| ■ Lake | ■ San Luis Obispo | ■ Yolo |
| ■ Lassen | ■ San Mateo | ■ Yuba |
| ■ Madera | ■ Santa Barbara | |

***Note:** Tribal data is included in each of the counties with Tribal land



Source: California Public Utilities Commission (CPUC); ia.cpuc.ca.gov/FireMap



WILDFIRE SAFETY IMPROVEMENTS PROGRESS ALAMEDA COUNTY

[CLICK HERE TO
RETURN TO MAIN PAGE](#)

Below is an overview of our progress on key wildfire safety improvement work as of December 31, 2021.

	COMPLETE THROUGH 2020 ¹	2021 TARGET	2021 COMPLETE
Enhanced Vegetation Management Complete	45 Line Miles	0 Line Miles	0 Line Miles
System Hardening Complete	4 Line Miles	0.3 Line Miles	0.3 Line Miles
Transmission and Distribution Sectionalizing Devices Installed	72 Devices	7 Devices	7 Devices
Weather Stations Installed	28 Stations	N/A ²	7 Stations
High Definition Cameras Installed	2 Cameras	N/A ²	7 Cameras
Community Resource Center (CRC) Sites Ready	1 Indoor 9 Outdoor	N/A ³	2 Indoor 10 Outdoor
Community-Based Organization (CBO) Partnerships in Place	5 Partnerships	N/A ⁴	1 Partnership

¹ Cumulative progress from 2018 through 2020

² Locations were identified on a monthly basis

³ CRC planning for 2021 was conducted in coordination with local agencies and tribes

⁴ Systemwide 2021 target exceeded

Note: Additional wildfire safety work is being planned for 2022 and will be available in the next progress update. All work plans are subject to change due to weather, access or other schedule constraints.

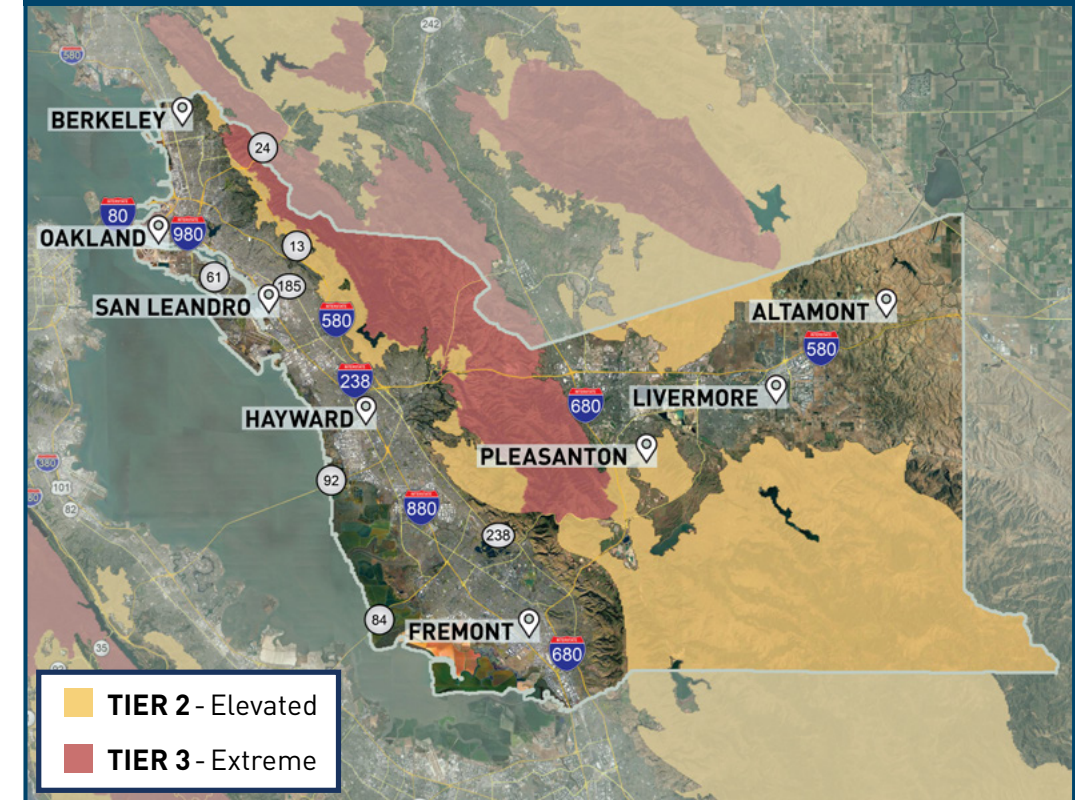


Click the clipboard icon
for key initiative descriptions

PG&E is prioritizing its wildfire safety work by:

- ✓ Locations with the highest risk of wildfire
- ✓ Locations that will make our system safer and lessen PSPS impacts

632,689 total customers served in Alameda County
5% located in high fire-threat areas



For more information about our wildfire safety work, visit:

pge.com/wildfiresafety



WILDFIRE SAFETY IMPROVEMENTS PROGRESS ALPINE COUNTY

[CLICK HERE TO
RETURN TO MAIN PAGE](#)

Below is an overview of our progress on key wildfire safety improvement work as of December 31, 2021.

	COMPLETE THROUGH 2020 ¹	2021 TARGET	2021 COMPLETE
Enhanced Vegetation Management Complete	0 Line Miles	0 Line Miles	0 Line Miles
System Hardening Complete	0 Line Miles	0 Line Miles	0 Line Miles
Transmission and Distribution Sectionalizing Devices Installed	0 Devices	0 Devices	0 Devices
Weather Stations Installed	1 Station	N/A ²	0 Stations
High Definition Cameras Installed	1 Camera	N/A ²	0 Cameras
Community Resource Center (CRC) Sites Ready	0 Indoor 1 Outdoor	N/A ³	0 Indoor 1 Outdoor
Community-Based Organization (CBO) Partnerships in Place	1 Partnership	N/A ⁴	0 Partnerships

¹ Cumulative progress from 2018 through 2020
² Locations were identified on a monthly basis
³ CRC planning for 2021 was conducted in coordination with local agencies and tribes
⁴ Systemwide 2021 target exceeded

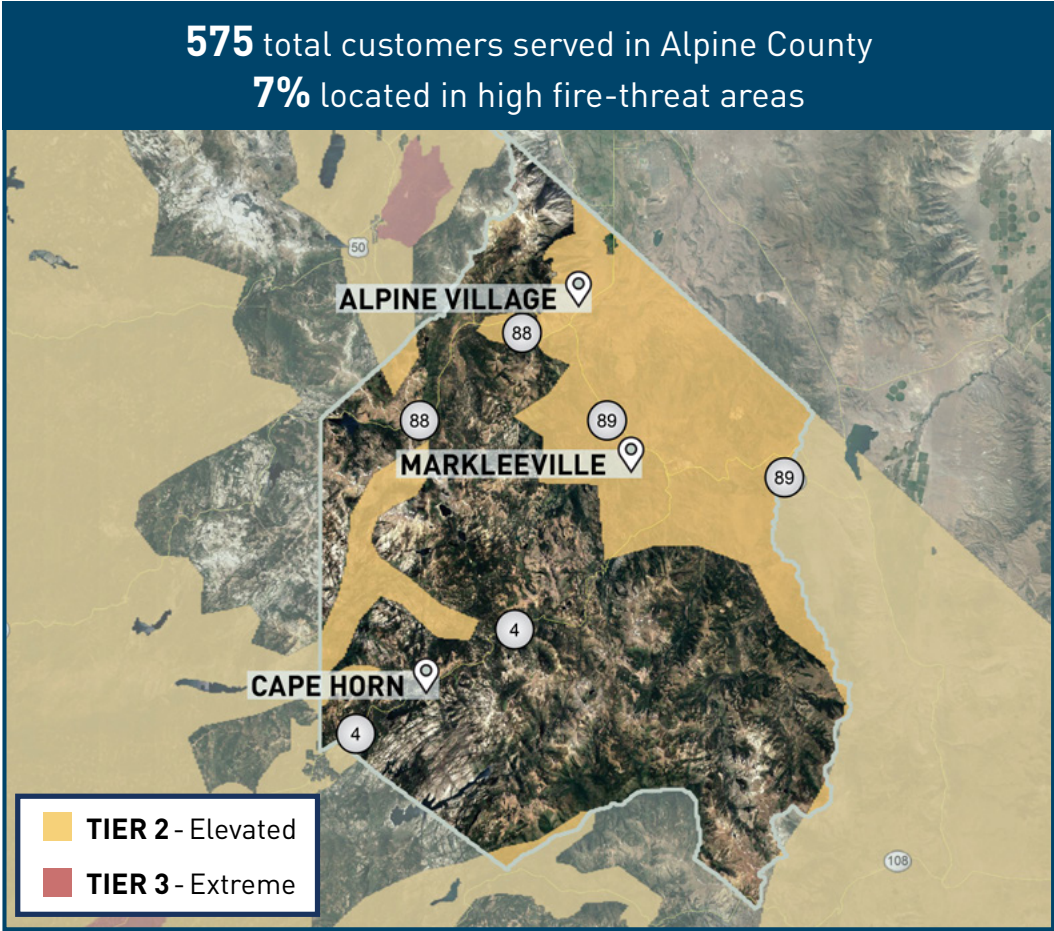
Note: Additional wildfire safety work is being planned for 2022 and will be available in the next progress update. All work plans are subject to change due to weather, access or other schedule constraints.



Click the clipboard icon
for key initiative descriptions

PG&E is prioritizing its wildfire safety work by:

- ✓ Locations with the highest risk of wildfire
- ✓ Locations that will make our system safer and lessen PSPS impacts



For more information about our wildfire safety work, visit:

pge.com/wildfiresafety



WILDFIRE SAFETY IMPROVEMENTS PROGRESS AMADOR COUNTY

[CLICK HERE TO
RETURN TO MAIN PAGE](#)

Below is an overview of our progress on key wildfire safety improvement work as of December 31, 2021.

	COMPLETE THROUGH 2020 ¹		2021 TARGET	2021 COMPLETE
Enhanced Vegetation Management Complete	105.1 Line Miles		0.7 Line Miles	2.3 Line Miles
System Hardening Complete	13.6 Line Miles		6.7 Line Miles	6.7 Line Miles
Transmission and Distribution Sectionalizing Devices Installed	10 Devices		27 Devices	21 Devices
Weather Stations Installed	17 Stations		N/A ²	7 Stations
High Definition Cameras Installed	5 Cameras		N/A ²	8 Cameras
Community Resource Center (CRC) Sites Ready	4 Indoor	6 Outdoor	N/A ³	4 Indoor 6 Outdoor
Community-Based Organization (CBO) Partnerships in Place	2 Partnerships		N/A ⁴	0 Partnerships

¹ Cumulative progress from 2018 through 2020

² Locations were identified on a monthly basis

³ CRC planning for 2021 was conducted in coordination with local agencies and tribes

⁴ Systemwide 2021 target exceeded

Note: Additional wildfire safety work is being planned for 2022 and will be available in the next progress update. All work plans are subject to change due to weather, access or other schedule constraints.

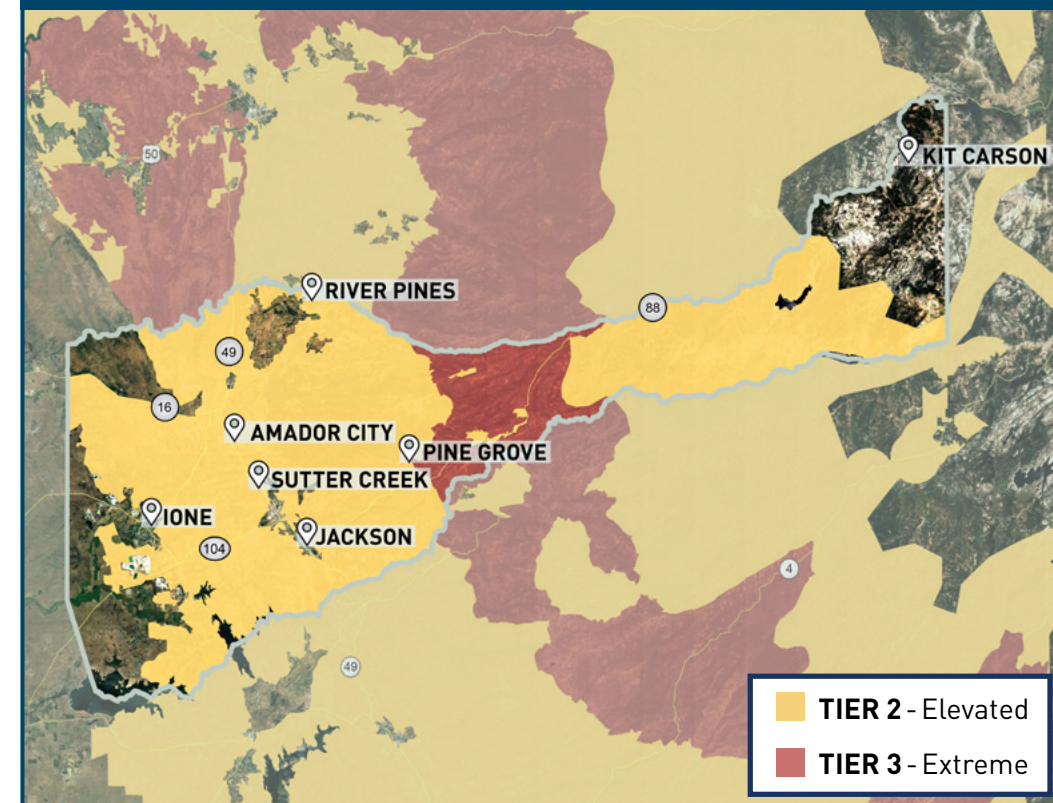


Click the clipboard icon
for key initiative descriptions

PG&E is prioritizing its wildfire safety work by:

- ✓ Locations with the highest risk of wildfire
- ✓ Locations that will make our system safer and lessen PSPS impacts

21,183 total customers served in Amador County
57% located in high fire-threat areas



For more information about our wildfire safety work, visit:

pge.com/wildfiresafety



WILDFIRE SAFETY IMPROVEMENTS PROGRESS BUTTE COUNTY

[CLICK HERE TO
RETURN TO MAIN PAGE](#)

Below is an overview of our progress on key wildfire safety improvement work as of December 31, 2021.

	COMPLETE THROUGH 2020 ¹	2021 TARGET	2021 COMPLETE
Enhanced Vegetation Management Complete	305.4 Line Miles	11.7 Line Miles	28.4 Line Miles
System Hardening Complete	93.3 Line Miles	44.6 Line Miles	44.6 Line Miles
Transmission and Distribution Sectionalizing Devices Installed	15 Devices	26 Devices	25 Devices
Weather Stations Installed	40 Stations	N/A ²	18 Stations
High Definition Cameras Installed	20 Cameras	N/A ²	1 Camera
Community Resource Center (CRC) Sites Ready	5 Indoor 7 Outdoor	N/A ³	6 Indoor 9 Outdoor
Community-Based Organization (CBO) Partnerships in Place	2 Partnerships	N/A ⁴	2 Partnerships

¹ Cumulative progress from 2018 through 2020

² Locations were identified on a monthly basis

³ CRC planning for 2021 was conducted in coordination with local agencies and tribes

⁴ Systemwide 2021 target exceeded

Note: Additional wildfire safety work is being planned for 2022 and will be available in the next progress update. All work plans are subject to change due to weather, access or other schedule constraints.

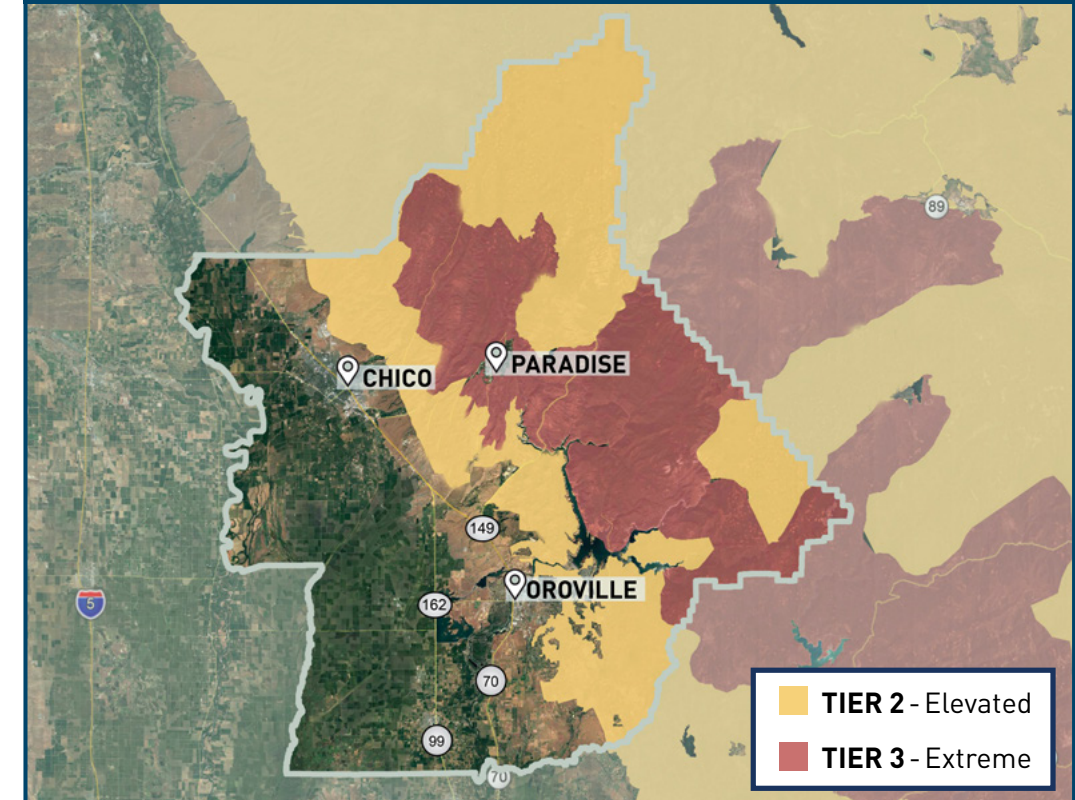


Click the clipboard icon
for key initiative descriptions

PG&E is prioritizing its wildfire safety work by:

- ✓ Locations with the highest risk of wildfire
- ✓ Locations that will make our system safer and lessen PSPS impacts

97,240 total customers served in Butte County
13% located in high fire-threat areas



For more information about our wildfire safety work, visit:

pge.com/wildfiresafety



WILDFIRE SAFETY IMPROVEMENTS PROGRESS CALAVERAS COUNTY

[CLICK HERE TO
RETURN TO MAIN PAGE](#)

Below is an overview of our progress on key wildfire safety improvement work as of December 31, 2021.

	COMPLETE THROUGH 2020 ¹	2021 TARGET	2021 COMPLETE
Enhanced Vegetation Management Complete	190.6 Line Miles	0 Line Miles	0 Line Miles
System Hardening Complete	2.1 Line Miles	1.6 Line Miles	1.6 Line Miles
Transmission and Distribution Sectionalizing Devices Installed	21 Devices	2 Devices	2 Devices
Weather Stations Installed	29 Stations	N/A ²	10 Stations
High Definition Cameras Installed	4 Cameras	N/A ²	1 Camera
Community Resource Center (CRC) Sites Ready	5 Indoor 6 Outdoor	N/A ³	5 Indoor 6 Outdoor
Community-Based Organization (CBO) Partnerships in Place	1 Partnership	N/A ⁴	1 Partnership

¹ Cumulative progress from 2018 through 2020

² Locations were identified on a monthly basis

³ CRC planning for 2021 was conducted in coordination with local agencies and tribes

⁴ Systemwide 2021 target exceeded

Note: Additional wildfire safety work is being planned for 2022 and will be available in the next progress update. All work plans are subject to change due to weather, access or other schedule constraints.

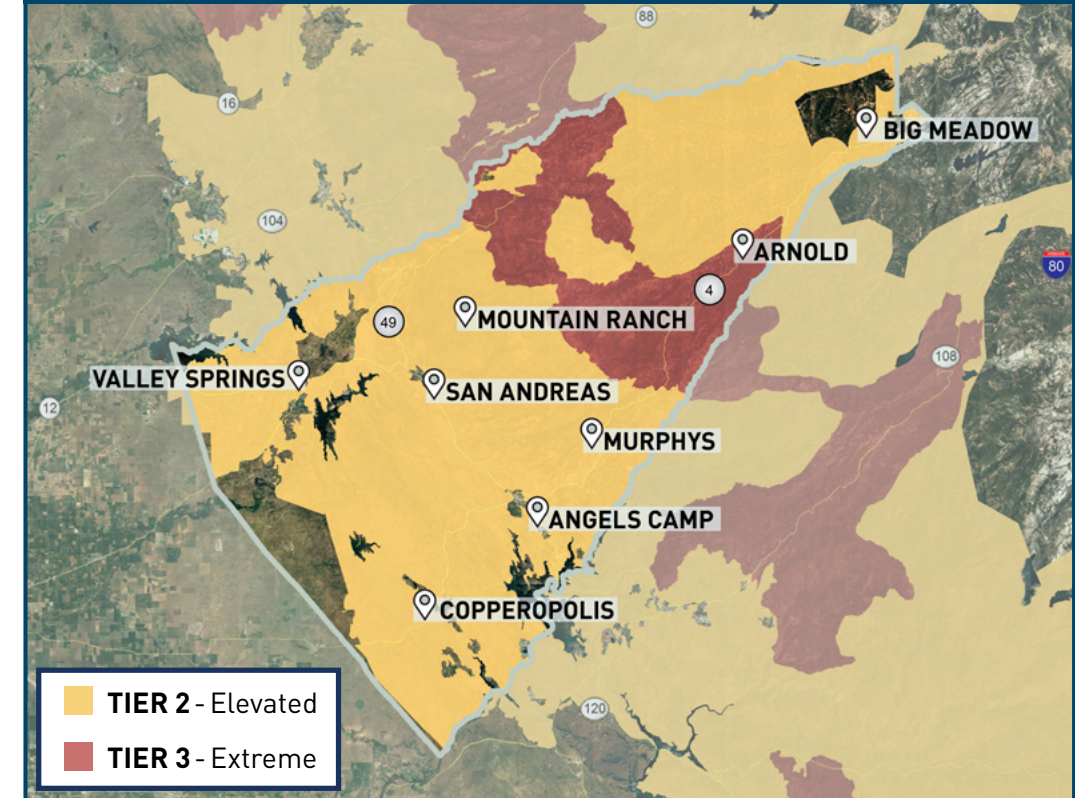


Click the clipboard icon
for key initiative descriptions

PG&E is prioritizing its wildfire safety work by:

- ✓ Locations with the highest risk of wildfire
- ✓ Locations that will make our system safer and lessen PSPS impacts

30,684 total customers served in Calaveras County
69% located in high fire-threat areas



For more information about our wildfire safety work, visit:

pge.com/wildfiresafety



WILDFIRE SAFETY IMPROVEMENTS PROGRESS COLUSA COUNTY

[CLICK HERE TO
RETURN TO MAIN PAGE](#)

Below is an overview of our progress on key wildfire safety improvement work as of December 31, 2021.

	COMPLETE THROUGH 2020 ¹	2021 TARGET	2021 COMPLETE
Enhanced Vegetation Management Complete	0 Line Miles	0 Line Miles	0 Line Miles
System Hardening Complete	0 Line Miles	0 Line Miles	0 Line Miles
Transmission and Distribution Sectionalizing Devices Installed	3 Devices	0 Devices	0 Devices
Weather Stations Installed	11 Stations	N/A ²	2 Stations
High Definition Cameras Installed	2 Cameras	N/A ²	0 Cameras
Community Resource Center (CRC) Sites Ready	2 Indoor 4 Outdoor	N/A ³	2 Indoor 4 Outdoor
Community-Based Organization (CBO) Partnerships in Place	1 Partnership	N/A ⁴	0 Partnerships

¹ Cumulative progress from 2018 through 2020

² Locations were identified on a monthly basis

³ CRC planning for 2021 was conducted in coordination with local agencies and tribes

⁴ Systemwide 2021 target exceeded

Note: Additional wildfire safety work is being planned for 2022 and will be available in the next progress update. All work plans are subject to change due to weather, access or other schedule constraints.

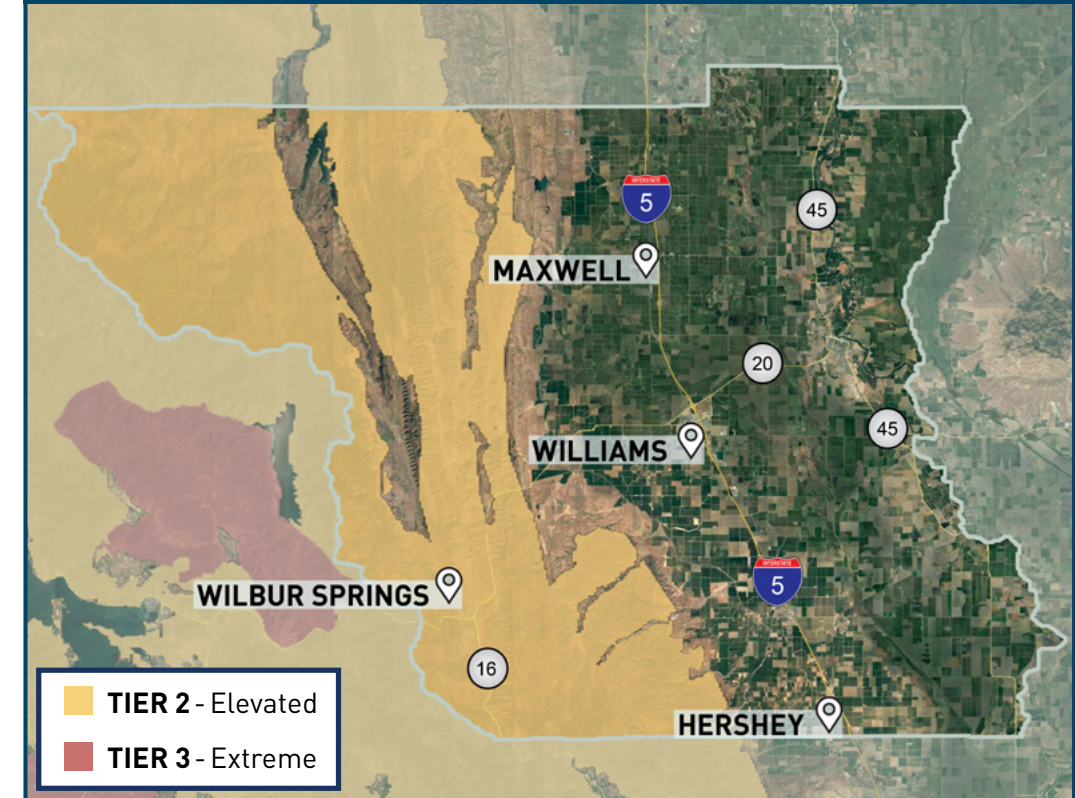


Click the clipboard icon
for key initiative descriptions

PG&E is prioritizing its wildfire safety work by:

- ✓ Locations with the highest risk of wildfire
- ✓ Locations that will make our system safer and lessen PSPS impacts

11,756 total customers served in Colusa County
1% located in high fire-threat areas



For more information about our wildfire safety work, visit:

pge.com/wildfiresafety



WILDFIRE SAFETY IMPROVEMENTS PROGRESS CONTRA COSTA COUNTY

[CLICK HERE TO
RETURN TO MAIN PAGE](#)

Below is an overview of our progress on key wildfire safety improvement work as of December 31, 2021.

	COMPLETE THROUGH 2020 ¹	2021 TARGET	2021 COMPLETE
Enhanced Vegetation Management Complete	85.6 Line Miles	0 Line Miles	3.7 Line Miles
System Hardening Complete	14.6 Line Miles	2.3 Line Miles	2.3 Line Miles
Transmission and Distribution Sectionalizing Devices Installed	40 Devices	7 Devices	6 Devices
Weather Stations Installed	33 Stations	N/A ²	10 Stations
High Definition Cameras Installed	10 Cameras	N/A ²	7 Cameras
Community Resource Center (CRC) Sites Ready	2 Indoor 10 Outdoor	N/A ³	3 Indoor 10 Outdoor
Community-Based Organization (CBO) Partnerships in Place	2 Partnerships	N/A ⁴	1 Partnership

¹ Cumulative progress from 2018 through 2020

² Locations were identified on a monthly basis

³ CRC planning for 2021 was conducted in coordination with local agencies and tribes

⁴ Systemwide 2021 target exceeded

Note: Additional wildfire safety work is being planned for 2022 and will be available in the next progress update. All work plans are subject to change due to weather, access or other schedule constraints.

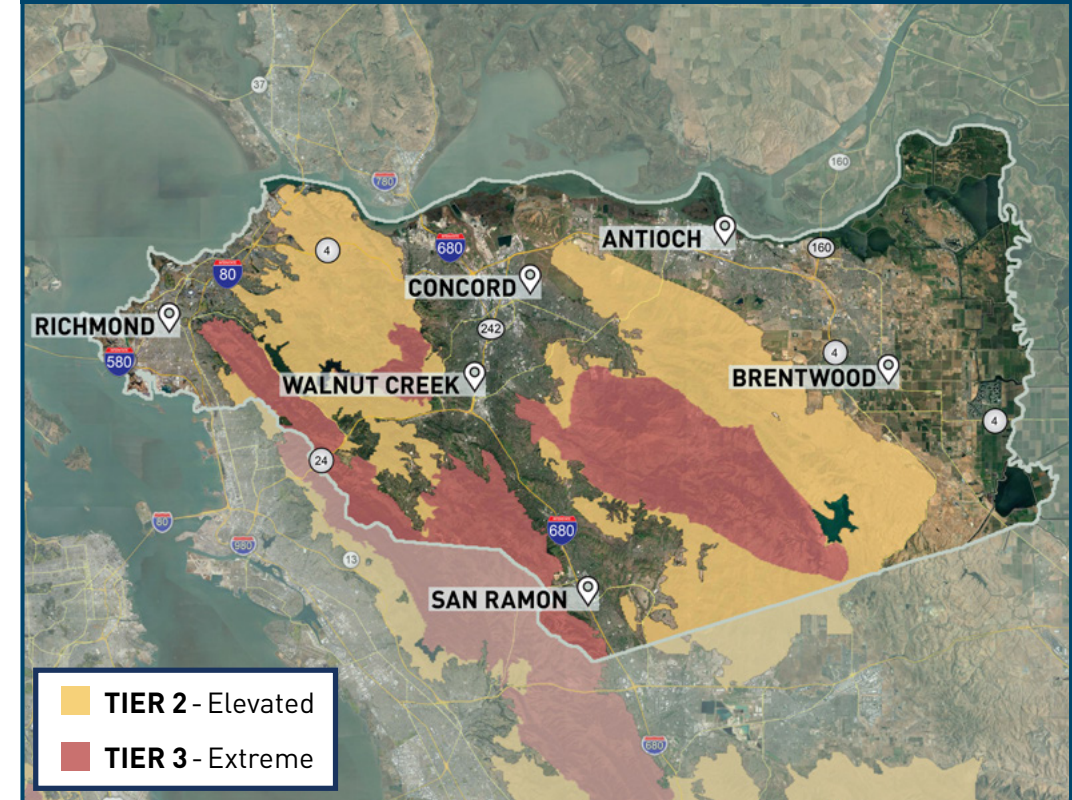


Click the clipboard icon
for key initiative descriptions

PG&E is prioritizing its wildfire safety work by:

- ✓ Locations with the highest risk of wildfire
- ✓ Locations that will make our system safer and lessen PSPS impacts

454,391 total customers served in Contra Costa County
4% located in high fire-threat areas



For more information about our wildfire safety work, visit:

pge.com/wildfiresafety



WILDFIRE SAFETY IMPROVEMENTS PROGRESS EL DORADO COUNTY

[CLICK HERE TO
RETURN TO MAIN PAGE](#)

Below is an overview of our progress on key wildfire safety improvement work as of December 31, 2021.

	COMPLETE THROUGH 2020 ¹	2021 TARGET	2021 COMPLETE
Enhanced Vegetation Management Complete	232.6 Line Miles	111.4 Line Miles	336.1 Line Miles
System Hardening Complete	55.7 Line Miles	33.2 Line Miles	33.2 Line Miles
Transmission and Distribution Sectionalizing Devices Installed	22 Devices	24 Devices	21 Devices
Weather Stations Installed	35 Stations	N/A ²	10 Stations
High Definition Cameras Installed	17 Cameras	N/A ²	3 Cameras
Community Resource Center (CRC) Sites Ready	5 Indoor 12 Outdoor	N/A ³	7 Indoor 11 Outdoor
Community-Based Organization (CBO) Partnerships in Place	2 Partnerships	N/A ⁴	0 Partnerships

¹ Cumulative progress from 2018 through 2020

² Locations were identified on a monthly basis

³ CRC planning for 2021 was conducted in coordination with local agencies and tribes

⁴ Systemwide 2021 target exceeded

Note: Additional wildfire safety work is being planned for 2022 and will be available in the next progress update. All work plans are subject to change due to weather, access or other schedule constraints.

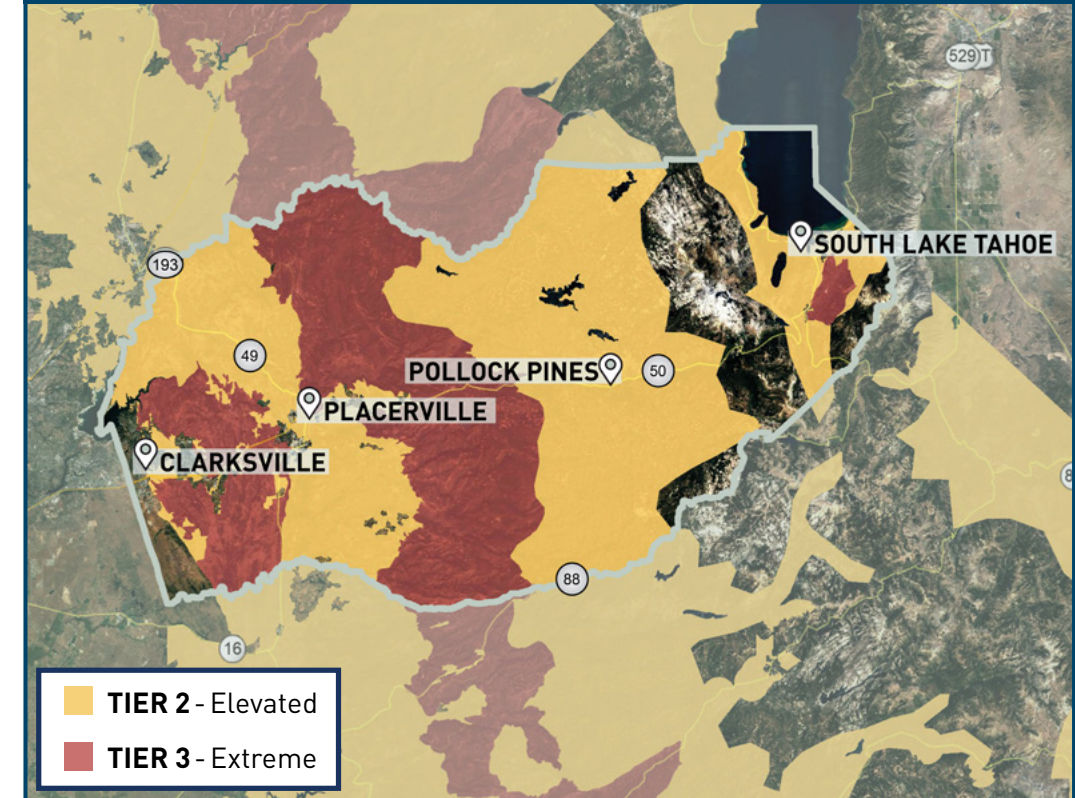


Click the clipboard icon
for key initiative descriptions

PG&E is prioritizing its wildfire safety work by:

- ✓ Locations with the highest risk of wildfire
- ✓ Locations that will make our system safer and lessen PSPS impacts

75,494 total customers served in El Dorado County
56% located in high fire-threat areas



For more information about our wildfire safety work, visit:

pge.com/wildfiresafety



WILDFIRE SAFETY IMPROVEMENTS PROGRESS FRESNO COUNTY

[CLICK HERE TO
RETURN TO MAIN PAGE](#)

Below is an overview of our progress on key wildfire safety improvement work as of December 31, 2021.

	COMPLETE THROUGH 2020 ¹	2021 TARGET	2021 COMPLETE
Enhanced Vegetation Management Complete	114.2 Line Miles	10.8 Line Miles	171.2 Line Miles
System Hardening Complete	17.8 Line Miles	0.3 Line Miles	0.3 Line Miles
Transmission and Distribution Sectionalizing Devices Installed	10 Devices	8 Devices	8 Devices
Weather Stations Installed	45 Stations	N/A ²	6 Stations
High Definition Cameras Installed	9 Cameras	N/A ²	2 Cameras
Community Resource Center (CRC) Sites Ready	3 Indoor 5 Outdoor	N/A ³	3 Indoor 6 Outdoor
Community-Based Organization (CBO) Partnerships in Place	2 Partnerships	N/A ⁴	0 Partnerships

¹ Cumulative progress from 2018 through 2020

² Locations were identified on a monthly basis

³ CRC planning for 2021 was conducted in coordination with local agencies and tribes

⁴ Systemwide 2021 target exceeded

Note: Additional wildfire safety work is being planned for 2022 and will be available in the next progress update. All work plans are subject to change due to weather, access or other schedule constraints.

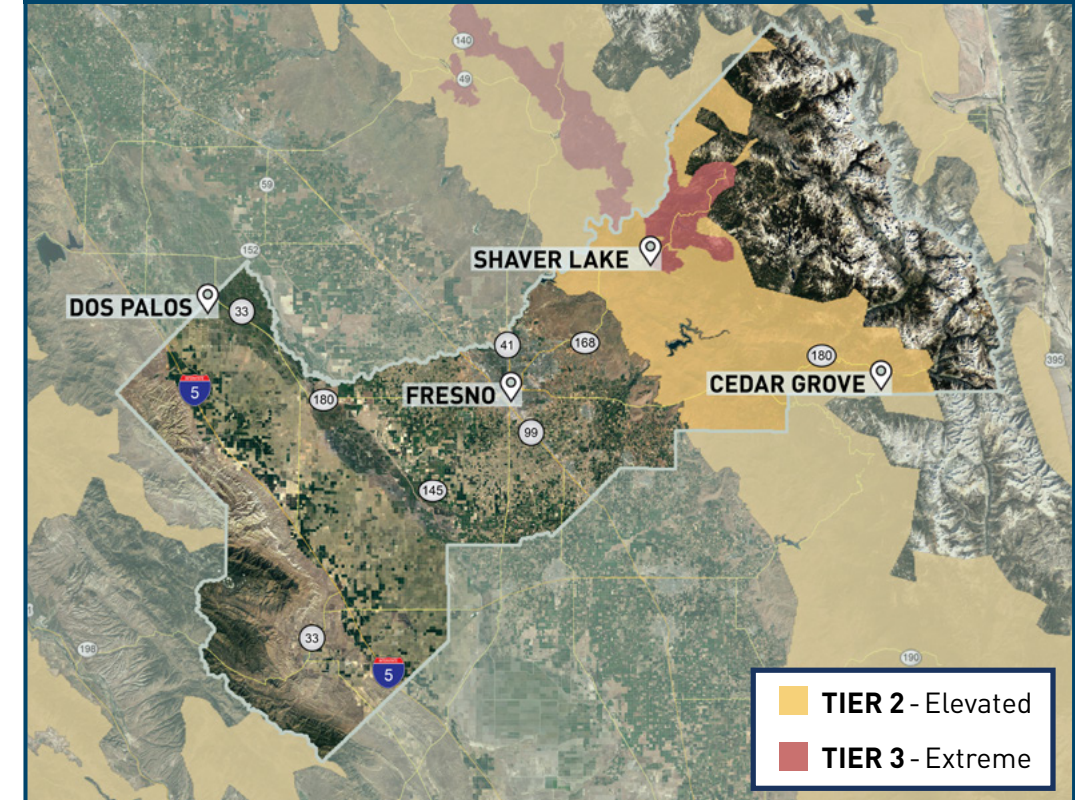


Click the clipboard icon
for key initiative descriptions

PG&E is prioritizing its wildfire safety work by:

- ✓ Locations with the highest risk of wildfire
- ✓ Locations that will make our system safer and lessen PSPS impacts

392,696 total customers served in Fresno County
2% located in high fire-threat areas



For more information about our wildfire safety work, visit:

pge.com/wildfiresafety



WILDFIRE SAFETY IMPROVEMENTS PROGRESS GLENN COUNTY

[CLICK HERE TO
RETURN TO MAIN PAGE](#)

Below is an overview of our progress on key wildfire safety improvement work as of December 31, 2021.

	COMPLETE THROUGH 2020 ¹	2021 TARGET	2021 COMPLETE
Enhanced Vegetation Management Complete	0 Line Miles	0 Line Miles	5.5 Line Miles
System Hardening Complete	0.1 Line Miles	0 Line Miles	0 Line Miles
Transmission and Distribution Sectionalizing Devices Installed	1 Device	0 Devices	0 Devices
Weather Stations Installed	6 Stations	N/A ²	7 Stations
High Definition Cameras Installed	6 Cameras	N/A ²	0 Cameras
Community Resource Center (CRC) Sites Ready	0 Indoor 5 Outdoor	N/A ³	0 Indoor 5 Outdoor
Community-Based Organization (CBO) Partnerships in Place	1 Partnership	N/A ⁴	0 Partnerships

¹ Cumulative progress from 2018 through 2020

² Locations were identified on a monthly basis

³ CRC planning for 2021 was conducted in coordination with local agencies and tribes

⁴ Systemwide 2021 target exceeded

Note: Additional wildfire safety work is being planned for 2022 and will be available in the next progress update. All work plans are subject to change due to weather, access or other schedule constraints.

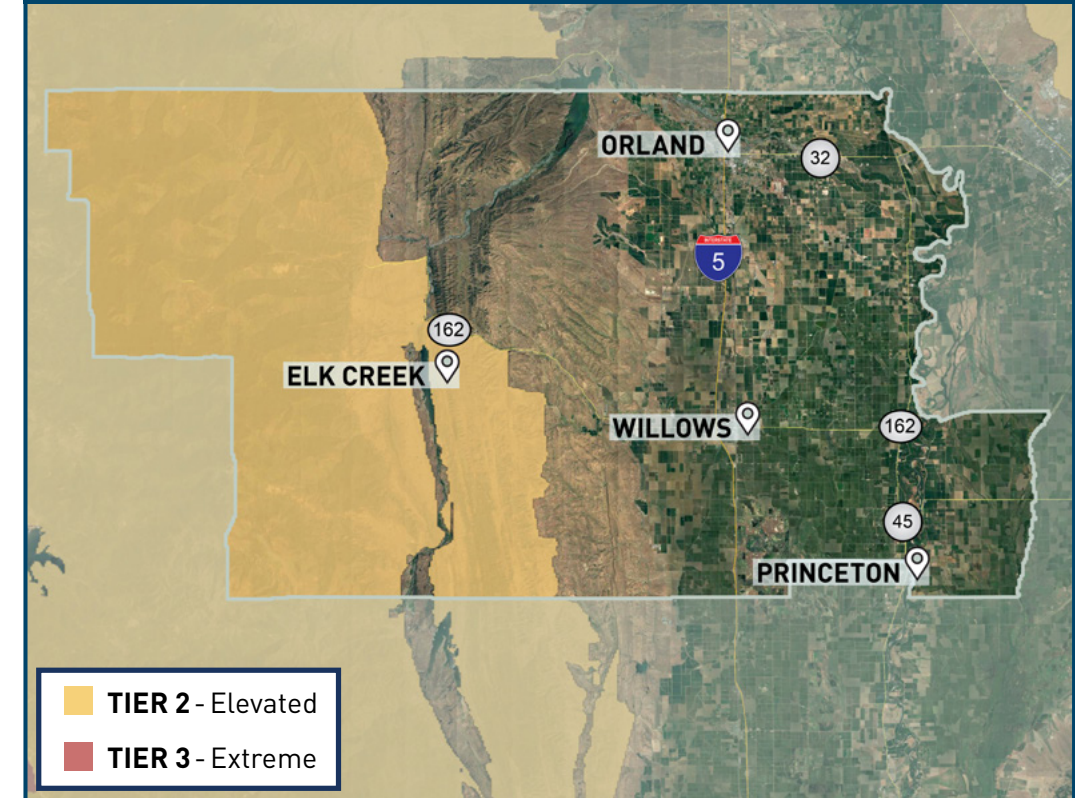


Click the clipboard icon
for key initiative descriptions

PG&E is prioritizing its wildfire safety work by:

- ✓ Locations with the highest risk of wildfire
- ✓ Locations that will make our system safer and lessen PSPS impacts

15,951 total customers served in Glenn County
1% located in high fire-threat areas



For more information about our wildfire safety work, visit:

pge.com/wildfiresafety



WILDFIRE SAFETY IMPROVEMENTS PROGRESS HUMBOLDT COUNTY

[CLICK HERE TO
RETURN TO MAIN PAGE](#)

Below is an overview of our progress on key wildfire safety improvement work as of December 31, 2021.

	COMPLETE THROUGH 2020 ¹	2021 TARGET	2021 COMPLETE
Enhanced Vegetation Management Complete	53.5 Line Miles	80.8 Line Miles	69.4 Line Miles
System Hardening Complete	9.9 Line Miles	3.6 Line Miles	3.6 Line Miles
Transmission and Distribution Sectionalizing Devices Installed	25 Devices	5 Devices	4 Devices
Weather Stations Installed	34 Stations	N/A ²	8 Stations
High Definition Cameras Installed	7 Cameras	N/A ²	4 Cameras
Community Resource Center (CRC) Sites Ready	3 Indoor 10 Outdoor	N/A ³	3 Indoor 11 Outdoor
Community-Based Organization (CBO) Partnerships in Place	1 Partnership	N/A ⁴	1 Partnership

¹ Cumulative progress from 2018 through 2020

² Locations were identified on a monthly basis

³ CRC planning for 2021 was conducted in coordination with local agencies and tribes

⁴ Systemwide 2021 target exceeded

Note: Additional wildfire safety work is being planned for 2022 and will be available in the next progress update. All work plans are subject to change due to weather, access or other schedule constraints.

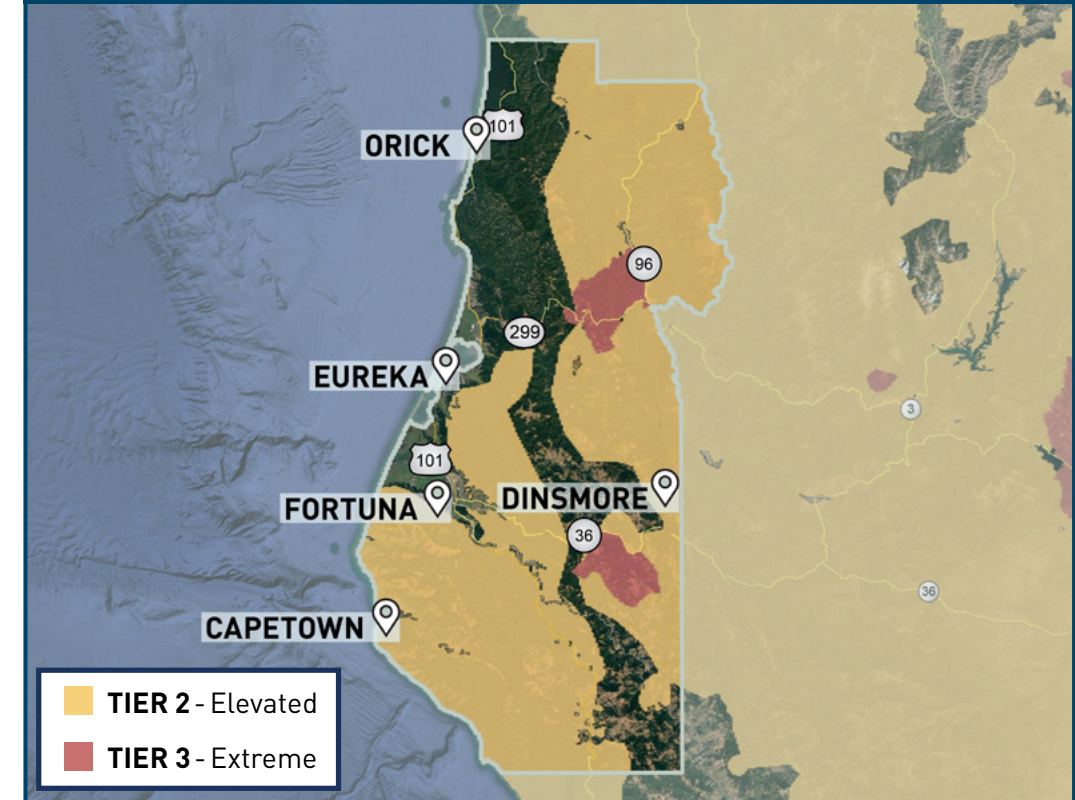


Click the clipboard icon
for key initiative descriptions

PG&E is prioritizing its wildfire safety work by:

- ✓ Locations with the highest risk of wildfire
- ✓ Locations that will make our system safer and lessen PSPS impacts

67,501 total customers served in Humboldt County
11% located in high fire-threat areas



For more information about our wildfire safety work, visit:

pge.com/wildfiresafety



WILDFIRE SAFETY IMPROVEMENTS PROGRESS KERN COUNTY

[CLICK HERE TO
RETURN TO MAIN PAGE](#)

Below is an overview of our progress on key wildfire safety improvement work as of December 31, 2021.

	COMPLETE THROUGH 2020 ¹	2021 TARGET	2021 COMPLETE
Enhanced Vegetation Management Complete	90.6 Line Miles	0 Line Miles	0 Line Miles
System Hardening Complete	0.1 Line Miles	1.1 Line Miles	1.1 Line Miles
Transmission and Distribution Sectionalizing Devices Installed	7 Devices	2 Devices	2 Devices
Weather Stations Installed	29 Stations	N/A ²	2 Stations
High Definition Cameras Installed	30 Cameras	N/A ²	0 Cameras
Community Resource Center (CRC) Sites Ready	4 Indoor 5 Outdoor	N/A ³	4 Indoor 5 Outdoor
Community-Based Organization (CBO) Partnerships in Place	1 Partnership	N/A ⁴	1 Partnership

¹ Cumulative progress from 2018 through 2020

² Locations were identified on a monthly basis

³ CRC planning for 2021 was conducted in coordination with local agencies and tribes

⁴ Systemwide 2021 target exceeded

Note: Additional wildfire safety work is being planned for 2022 and will be available in the next progress update. All work plans are subject to change due to weather, access or other schedule constraints.

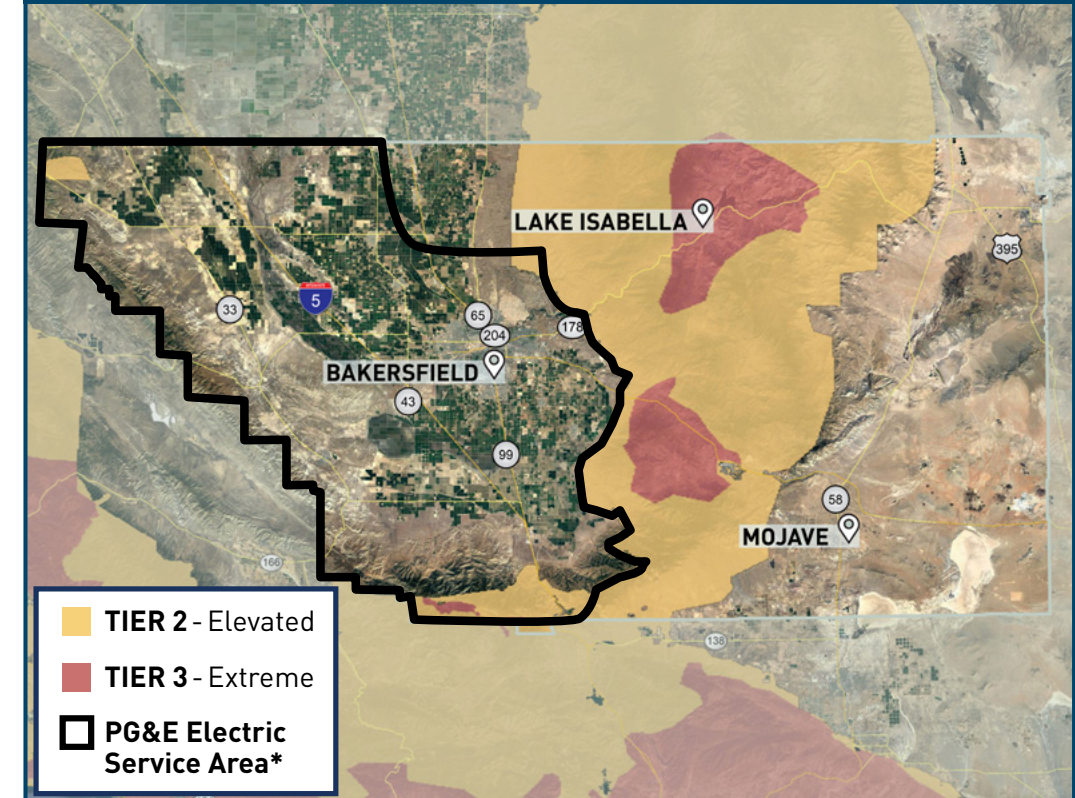


Click the clipboard icon
for key initiative descriptions

PG&E is prioritizing its wildfire safety work by:

- ✓ Locations with the highest risk of wildfire
- ✓ Locations that will make our system safer and lessen PSPS impacts

257,395 total customers served in Kern County
<1% located in high fire-threat areas



*Only a portion of Kern County is served by PG&E

For more information about our wildfire safety work, visit:

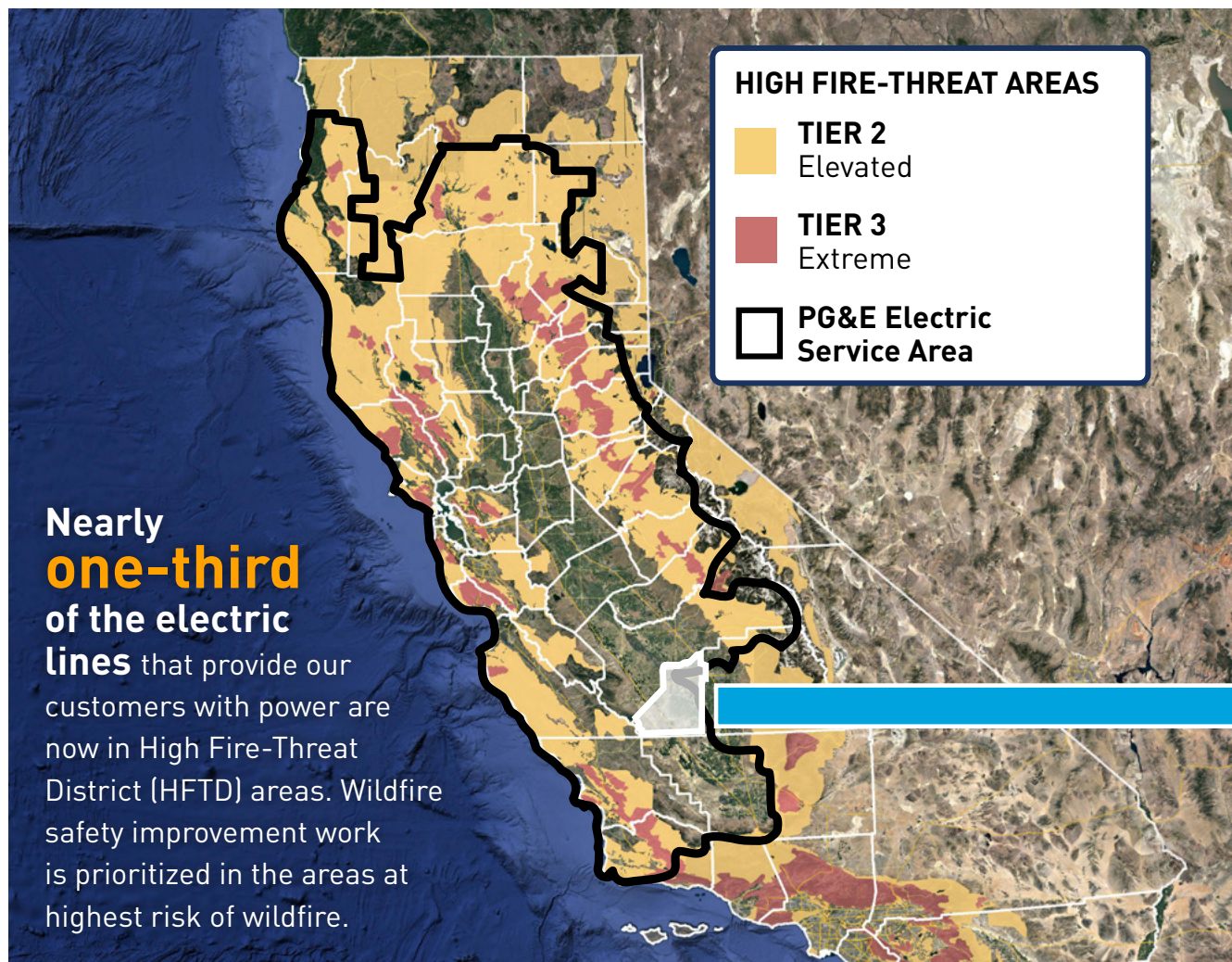
pge.com/wildfiresafety



WILDFIRE SAFETY IMPROVEMENTS PROGRESS KINGS COUNTY

[CLICK HERE TO
RETURN TO MAIN PAGE](#)

There are no high fire-threat areas in this county. For that reason, no wildfire safety work was conducted in 2021.



Source: California Public Utilities Commission (CPUC); ia.cpuc.ca.gov/FireMap

PG&E is prioritizing its wildfire safety work by:

- ✓ Locations with the highest risk of wildfire
- ✓ Locations that will make our system safer and lessen PSPS impacts



For more information about our wildfire safety work, visit:

pge.com/wildfiresafety



WILDFIRE SAFETY IMPROVEMENTS PROGRESS LAKE COUNTY

[CLICK HERE TO
RETURN TO MAIN PAGE](#)

Below is an overview of our progress on key wildfire safety improvement work as of December 31, 2021.

	COMPLETE THROUGH 2020 ¹	2021 TARGET	2021 COMPLETE
Enhanced Vegetation Management Complete	358.7 Line Miles	2.3 Line Miles	6.1 Line Miles
System Hardening Complete	14.2 Line Miles	3.7 Line Miles	3.7 Line Miles
Transmission and Distribution Sectionalizing Devices Installed	23 Devices	18 Devices	14 Devices
Weather Stations Installed	30 Stations	N/A ²	20 Stations
High Definition Cameras Installed	7 Cameras	N/A ²	8 Cameras
Community Resource Center (CRC) Sites Ready	5 Indoor 9 Outdoor	N/A ³	5 Indoor 12 Outdoor
Community-Based Organization (CBO) Partnerships in Place	1 Partnership	N/A ⁴	4 Partnerships

¹ Cumulative progress from 2018 through 2020

² Locations were identified on a monthly basis

³ CRC planning for 2021 was conducted in coordination with local agencies and tribes

⁴ Systemwide 2021 target exceeded

Note: Additional wildfire safety work is being planned for 2022 and will be available in the next progress update. All work plans are subject to change due to weather, access or other schedule constraints.

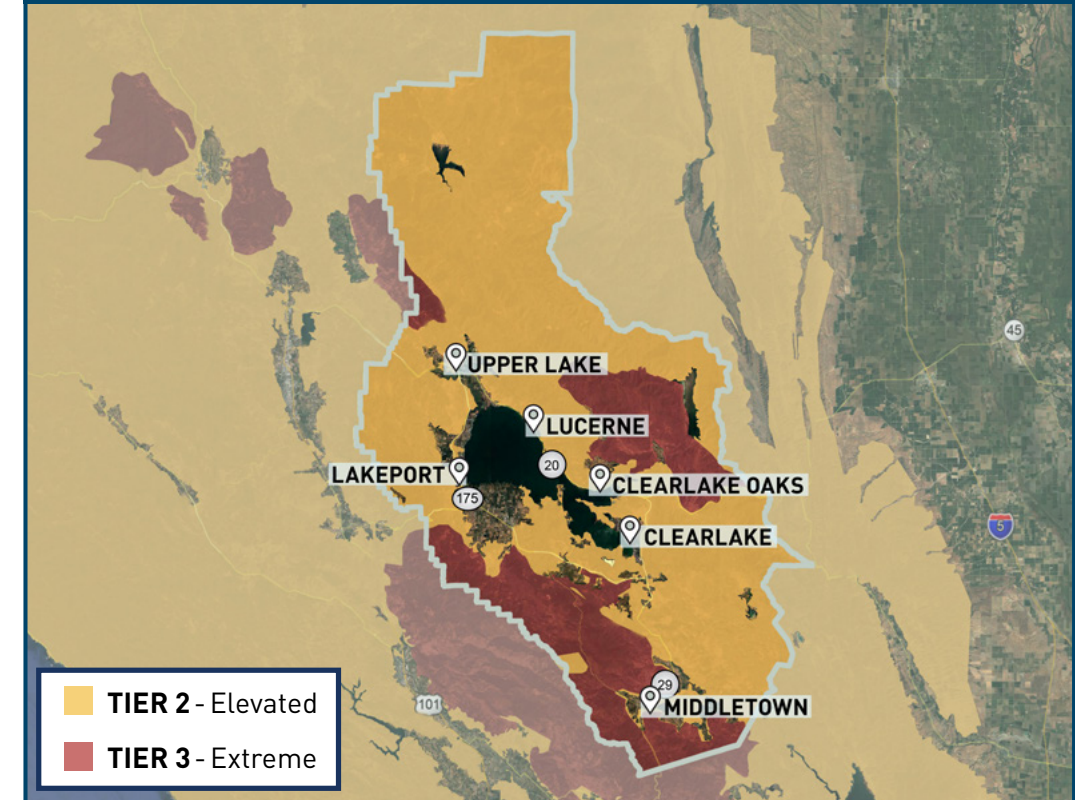


Click the clipboard icon
for key initiative descriptions

PG&E is prioritizing its wildfire safety work by:

- ✓ Locations with the highest risk of wildfire
- ✓ Locations that will make our system safer and lessen PSPS impacts

37,780 total customers served in Lake County
42% located in high fire-threat areas



For more information about our wildfire safety work, visit:

pge.com/wildfiresafety



WILDFIRE SAFETY IMPROVEMENTS PROGRESS LASSEN COUNTY

[CLICK HERE TO
RETURN TO MAIN PAGE](#)

Below is an overview of our progress on key wildfire safety improvement work as of December 31, 2021.

	COMPLETE THROUGH 2020 ¹	2021 TARGET	2021 COMPLETE
Enhanced Vegetation Management Complete	0 Line Miles	0 Line Miles	0 Line Miles
System Hardening Complete	0 Line Miles	0 Line Miles	0 Line Miles
Transmission and Distribution Sectionalizing Devices Installed	4 Devices	0 Devices	0 Devices
Weather Stations Installed	8 Stations	N/A ²	2 Stations
High Definition Cameras Installed	5 Cameras	N/A ²	0 Cameras
Community Resource Center (CRC) Sites Ready	0 Indoor 3 Outdoor	N/A ³	0 Indoor 4 Outdoor
Community-Based Organization (CBO) Partnerships in Place	0 Partnerships	N/A ⁴	0 Partnerships

¹ Cumulative progress from 2018 through 2020

² Locations were identified on a monthly basis

³ CRC planning for 2021 was conducted in coordination with local agencies and tribes

⁴ Systemwide 2021 target exceeded

Note: Additional wildfire safety work is being planned for 2022 and will be available in the next progress update. All work plans are subject to change due to weather, access or other schedule constraints.

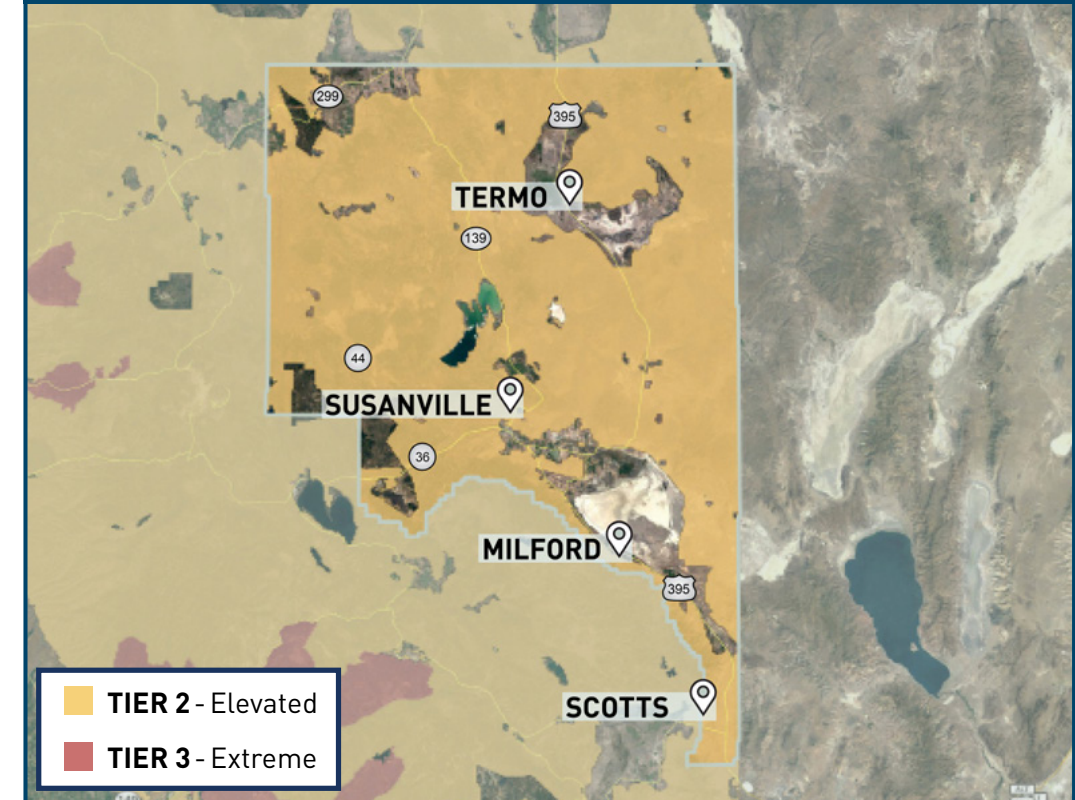


Click the clipboard icon
for key initiative descriptions

PG&E is prioritizing its wildfire safety work by:

- ✓ Locations with the highest risk of wildfire
- ✓ Locations that will make our system safer and lessen PSPS impacts

985 total customers served in Lassen County
57% located in high fire-threat areas



For more information about our wildfire safety work, visit:

pge.com/wildfiresafety



WILDFIRE SAFETY IMPROVEMENTS PROGRESS MADERA COUNTY

[CLICK HERE TO
RETURN TO MAIN PAGE](#)

Below is an overview of our progress on key wildfire safety improvement work as of December 31, 2021.

	COMPLETE THROUGH 2020 ¹	2021 TARGET	2021 COMPLETE
Enhanced Vegetation Management Complete	305.8 Line Miles	19.3 Line Miles	170.5 Line Miles
System Hardening Complete	1.1 Line Miles	5.8 Line Miles	5.8 Line Miles
Transmission and Distribution Sectionalizing Devices Installed	0 Devices	12 Devices	0 Devices
Weather Stations Installed	18 Stations	N/A ²	5 Stations
High Definition Cameras Installed	2 Cameras	N/A ²	0 Cameras
Community Resource Center (CRC) Sites Ready	4 Indoor 4 Outdoor	N/A ³	5 Indoor 4 Outdoor
Community-Based Organization (CBO) Partnerships in Place	1 Partnership	N/A ⁴	0 Partnerships

¹ Cumulative progress from 2018 through 2020

² Locations were identified on a monthly basis

³ CRC planning for 2021 was conducted in coordination with local agencies and tribes

⁴ Systemwide 2021 target exceeded

Note: Additional wildfire safety work is being planned for 2022 and will be available in the next progress update. All work plans are subject to change due to weather, access or other schedule constraints.

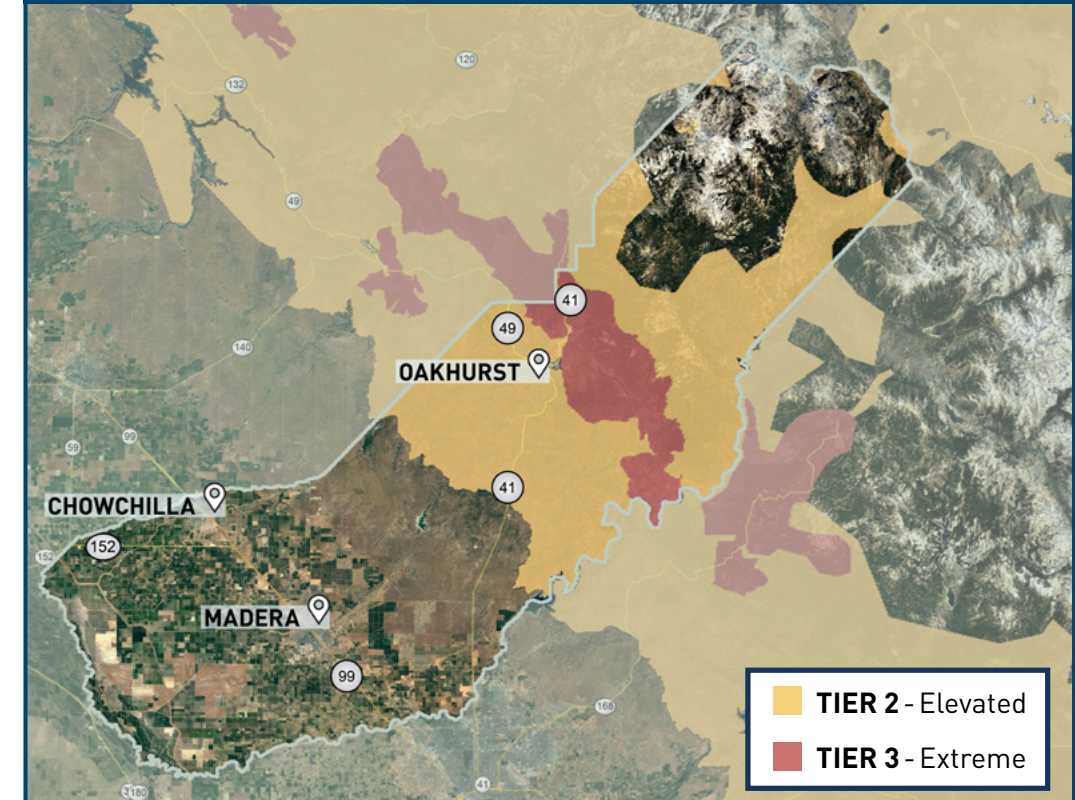


Click the clipboard icon
for key initiative descriptions

PG&E is prioritizing its wildfire safety work by:

- ✓ Locations with the highest risk of wildfire
- ✓ Locations that will make our system safer and lessen PSPS impacts

64,679 total customers served in Madera County
23% located in high fire-threat areas



For more information about our wildfire safety work, visit:

pge.com/wildfiresafety



WILDFIRE SAFETY IMPROVEMENTS PROGRESS MARIN COUNTY

[CLICK HERE TO
RETURN TO MAIN PAGE](#)

Below is an overview of our progress on key wildfire safety improvement work as of December 31, 2021.

	COMPLETE THROUGH 2020 ¹	2021 TARGET	2021 COMPLETE
Enhanced Vegetation Management Complete	50.8 Line Miles	3.5 Line Miles	2.7 Line Miles
System Hardening Complete	3.3 Line Miles	0.2 Line Miles	0.2 Line Miles
Transmission and Distribution Sectionalizing Devices Installed	67 Devices	2 Devices	1 Device
Weather Stations Installed	27 Stations	N/A ²	6 Stations
High Definition Cameras Installed	12 Cameras	N/A ²	0 Cameras
Community Resource Center (CRC) Sites Ready	3 Indoor 12 Outdoor	N/A ³	5 Indoor 12 Outdoor
Community-Based Organization (CBO) Partnerships in Place	1 Partnership	N/A ⁴	1 Partnership

¹ Cumulative progress from 2018 through 2020

² Locations were identified on a monthly basis

³ CRC planning for 2021 was conducted in coordination with local agencies and tribes

⁴ Systemwide 2021 target exceeded

Note: Additional wildfire safety work is being planned for 2022 and will be available in the next progress update. All work plans are subject to change due to weather, access or other schedule constraints.

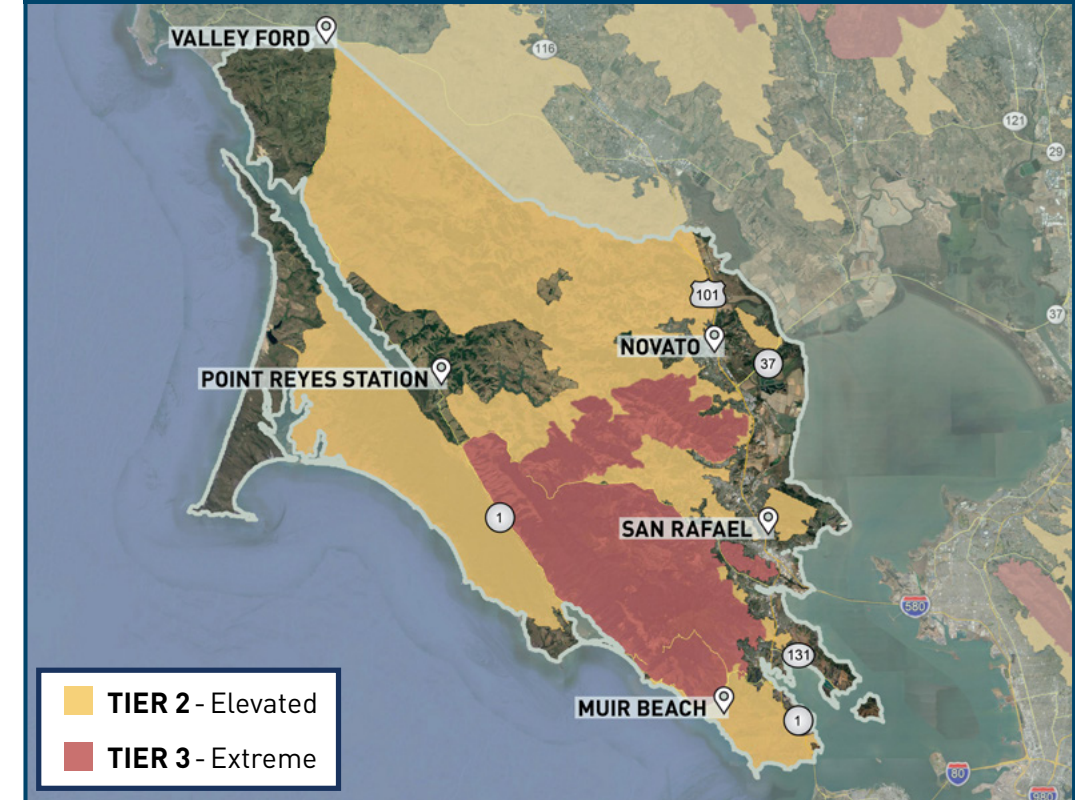


Click the clipboard icon
for key initiative descriptions

PG&E is prioritizing its wildfire safety work by:

- ✓ Locations with the highest risk of wildfire
- ✓ Locations that will make our system safer and lessen PSPS impacts

121,002 total customers served in Marin County
24% located in high fire-threat areas



For more information about our wildfire safety work, visit:

pge.com/wildfiresafety



WILDFIRE SAFETY IMPROVEMENTS PROGRESS MARIPOSA COUNTY

[CLICK HERE TO
RETURN TO MAIN PAGE](#)

Below is an overview of our progress on key wildfire safety improvement work as of December 31, 2021.

	COMPLETE THROUGH 2020 ¹	2021 TARGET	2021 COMPLETE
Enhanced Vegetation Management Complete	215 Line Miles	31.5 Line Miles	112 Line Miles
System Hardening Complete	0 Line Miles	13.7 Line Miles	13.7 Line Miles
Transmission and Distribution Sectionalizing Devices Installed	0 Devices	1 Device	1 Device
Weather Stations Installed	24 Stations	N/A ²	8 Stations
High Definition Cameras Installed	6 Cameras	N/A ²	4 Cameras
Community Resource Center (CRC) Sites Ready	2 Indoor 4 Outdoor	N/A ³	2 Indoor 4 Outdoor
Community-Based Organization (CBO) Partnerships in Place	1 Partnership	N/A ⁴	0 Partnerships

¹ Cumulative progress from 2018 through 2020

² Locations were identified on a monthly basis

³ CRC planning for 2021 was conducted in coordination with local agencies and tribes

⁴ Systemwide 2021 target exceeded

Note: Additional wildfire safety work is being planned for 2022 and will be available in the next progress update. All work plans are subject to change due to weather, access or other schedule constraints.

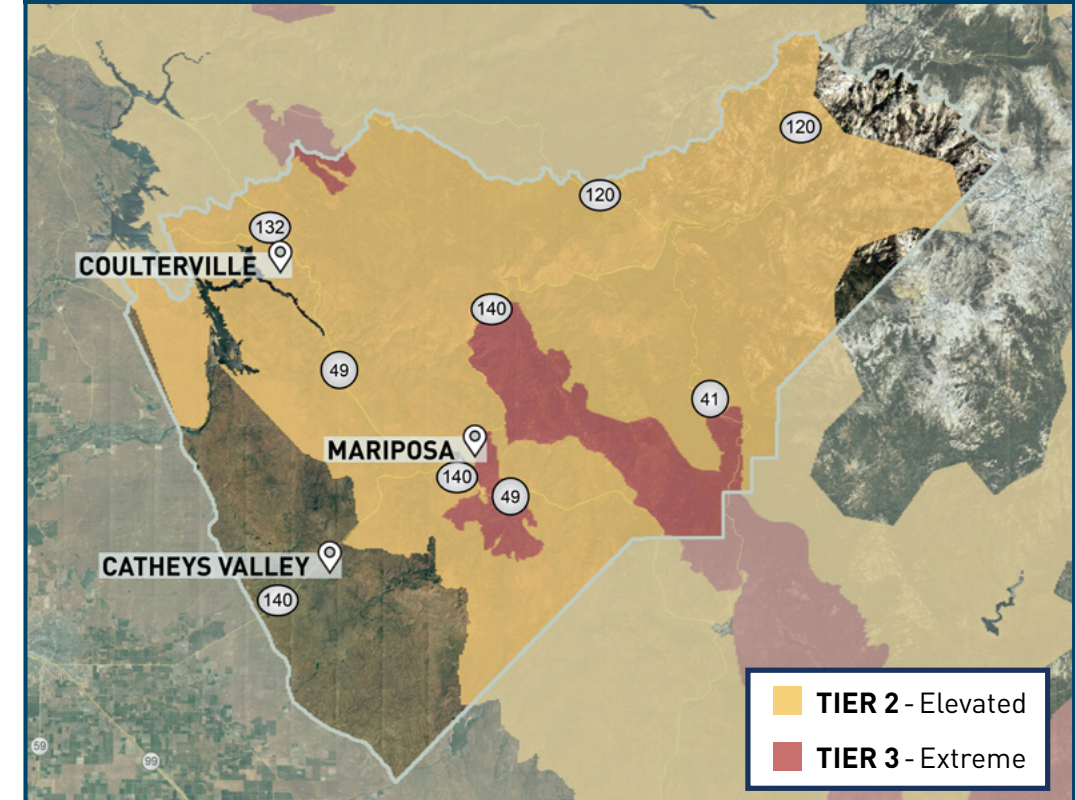


Click the clipboard icon
for key initiative descriptions

PG&E is prioritizing its wildfire safety work by:

- ✓ Locations with the highest risk of wildfire
- ✓ Locations that will make our system safer and lessen PSPS impacts

11,005 total customers served in Mariposa County
86% located in high fire-threat areas



For more information about our wildfire safety work, visit:

pge.com/wildfiresafety



WILDFIRE SAFETY IMPROVEMENTS PROGRESS MENDOCINO COUNTY

[CLICK HERE TO
RETURN TO MAIN PAGE](#)

Below is an overview of our progress on key wildfire safety improvement work as of December 31, 2021.

	COMPLETE THROUGH 2020 ¹	2021 TARGET	2021 COMPLETE
Enhanced Vegetation Management Complete	133.6 Line Miles	89.1 Line Miles	91.6 Line Miles
System Hardening Complete	1.1 Line Miles	1.8 Line Miles	1.8 Line Miles
Transmission and Distribution Sectionalizing Devices Installed	27 Devices	4 Devices	4 Devices
Weather Stations Installed	50 Stations	N/A ²	22 Stations
High Definition Cameras Installed	12 Cameras	N/A ²	17 Cameras
Community Resource Center (CRC) Sites Ready	3 Indoor 11 Outdoor	N/A ³	3 Indoor 11 Outdoor
Community-Based Organization (CBO) Partnerships in Place	2 Partnerships	N/A ⁴	0 Partnerships

¹ Cumulative progress from 2018 through 2020

² Locations were identified on a monthly basis

³ CRC planning for 2021 was conducted in coordination with local agencies and tribes

⁴ Systemwide 2021 target exceeded

Note: Additional wildfire safety work is being planned for 2022 and will be available in the next progress update. All work plans are subject to change due to weather, access or other schedule constraints.

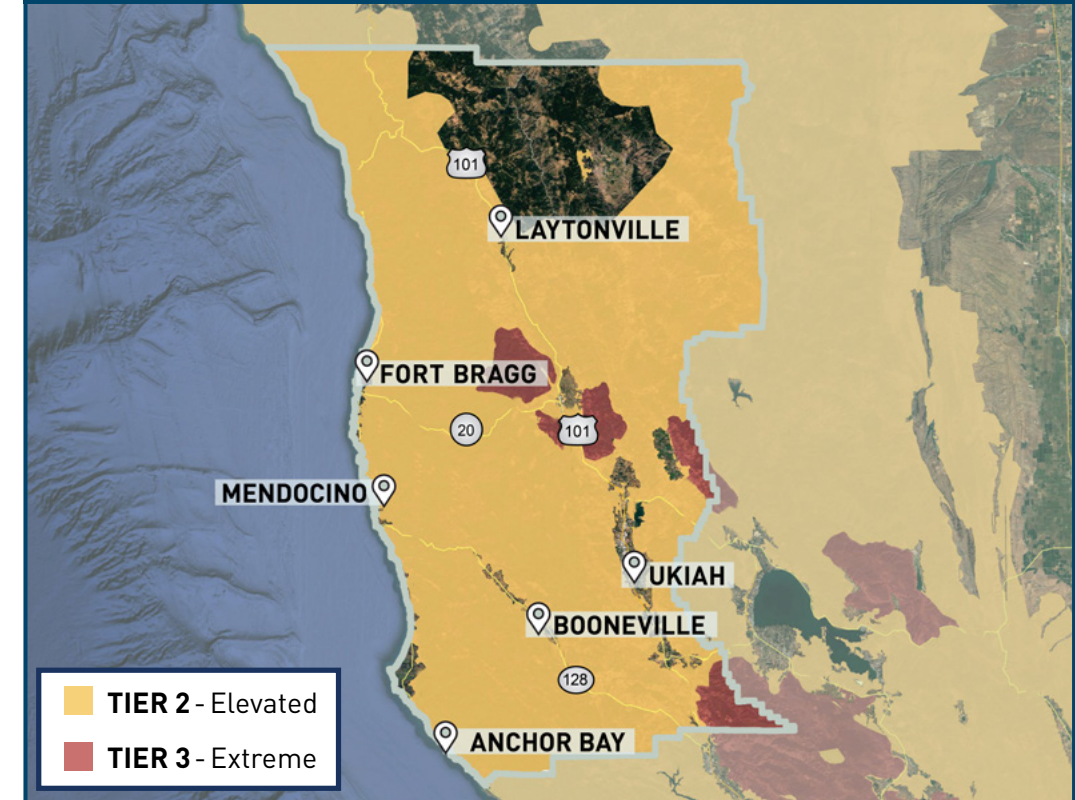


Click the clipboard icon
for key initiative descriptions

PG&E is prioritizing its wildfire safety work by:

- ✓ Locations with the highest risk of wildfire
- ✓ Locations that will make our system safer and lessen PSPS impacts

38,356 total customers served in Mendocino County
49% located in high fire-threat areas



For more information about our wildfire safety work, visit:

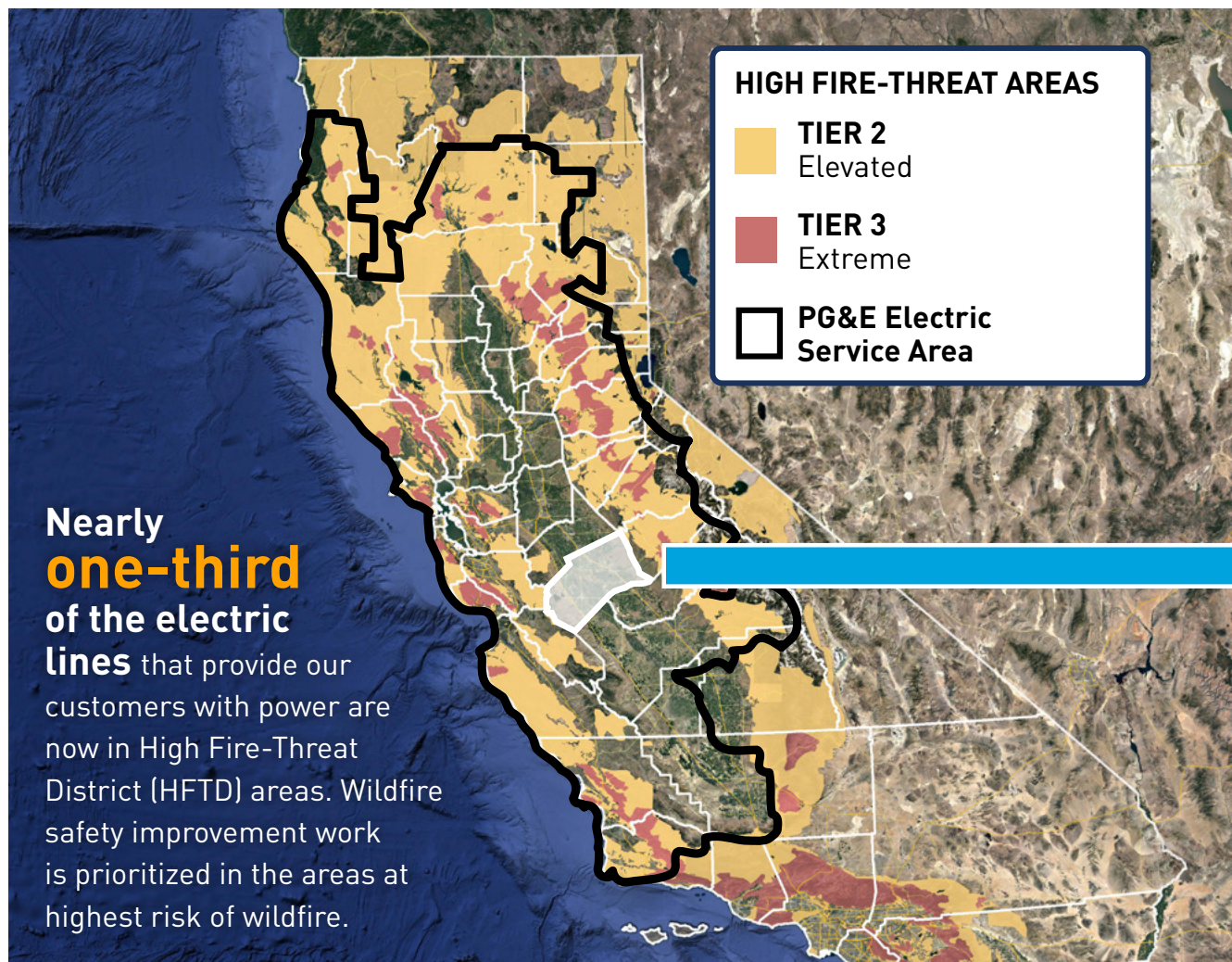
pge.com/wildfiresafety



WILDFIRE SAFETY IMPROVEMENTS PROGRESS MERCED COUNTY

[CLICK HERE TO
RETURN TO MAIN PAGE](#)

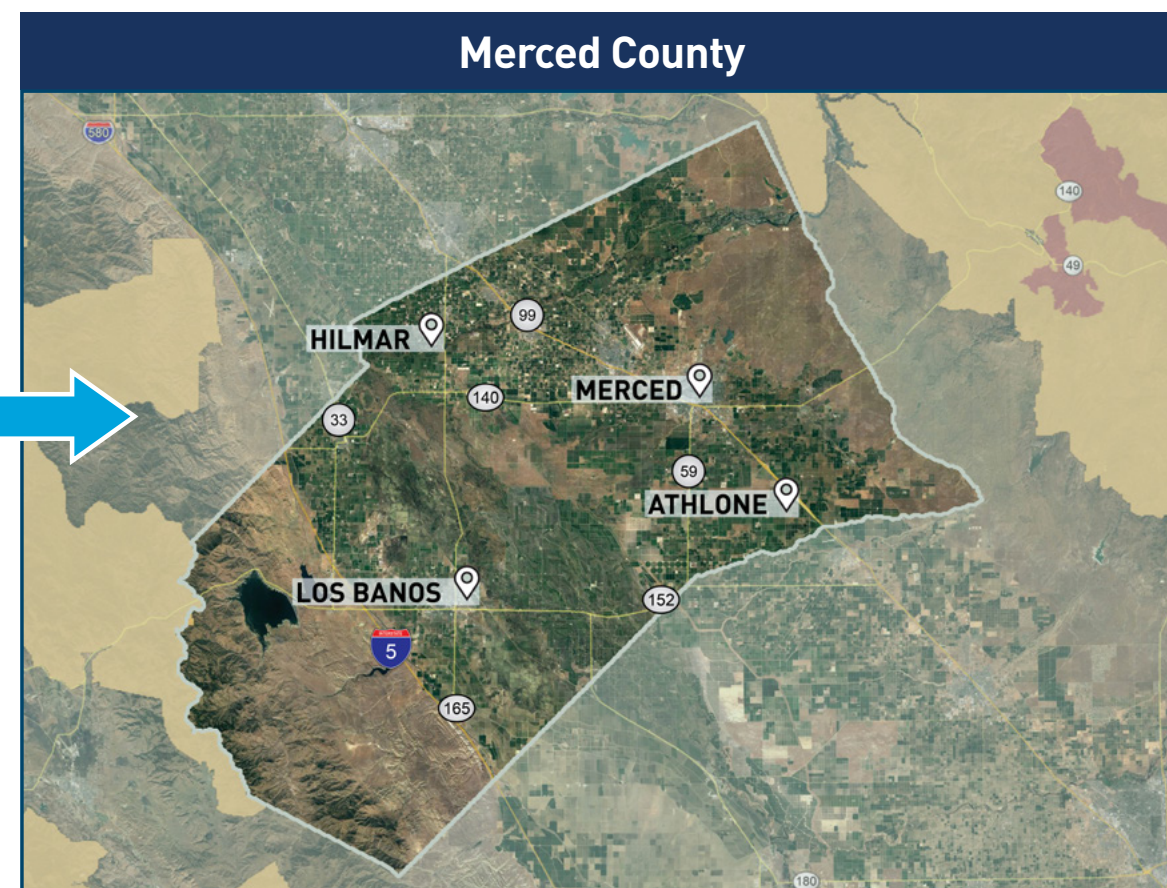
There are no high fire-threat areas in this county. For that reason, no wildfire safety work was conducted in 2021.



Source: California Public Utilities Commission (CPUC); ia.cpuc.ca.gov/FireMap

PG&E is prioritizing its wildfire safety work by:

- ✓ Locations with the highest risk of wildfire
- ✓ Locations that will make our system safer and lessen PSPS impacts



For more information about our wildfire safety work, visit:

pge.com/wildfiresafety



WILDFIRE SAFETY IMPROVEMENTS PROGRESS MONTEREY COUNTY

[CLICK HERE TO
RETURN TO MAIN PAGE](#)

Below is an overview of our progress on key wildfire safety improvement work as of December 31, 2021.

	COMPLETE THROUGH 2020 ¹	2021 TARGET	2021 COMPLETE
Enhanced Vegetation Management Complete	265.2 Line Miles	0 Line Miles	0 Line Miles
System Hardening Complete	3.8 Line Miles	0.6 Line Miles	0.6 Line Miles
Transmission and Distribution Sectionalizing Devices Installed	53 Devices	10 Devices	9 Devices
Weather Stations Installed	53 Stations	N/A ²	13 Stations
High Definition Cameras Installed	18 Cameras	N/A ²	4 Cameras
Community Resource Center (CRC) Sites Ready	3 Indoor 7 Outdoor	N/A ³	3 Indoor 7 Outdoor
Community-Based Organization (CBO) Partnerships in Place	2 Partnerships	N/A ⁴	0 Partnerships

¹ Cumulative progress from 2018 through 2020

² Locations were identified on a monthly basis

³ CRC planning for 2021 was conducted in coordination with local agencies and tribes

⁴ Systemwide 2021 target exceeded

Note: Additional wildfire safety work is being planned for 2022 and will be available in the next progress update. All work plans are subject to change due to weather, access or other schedule constraints.

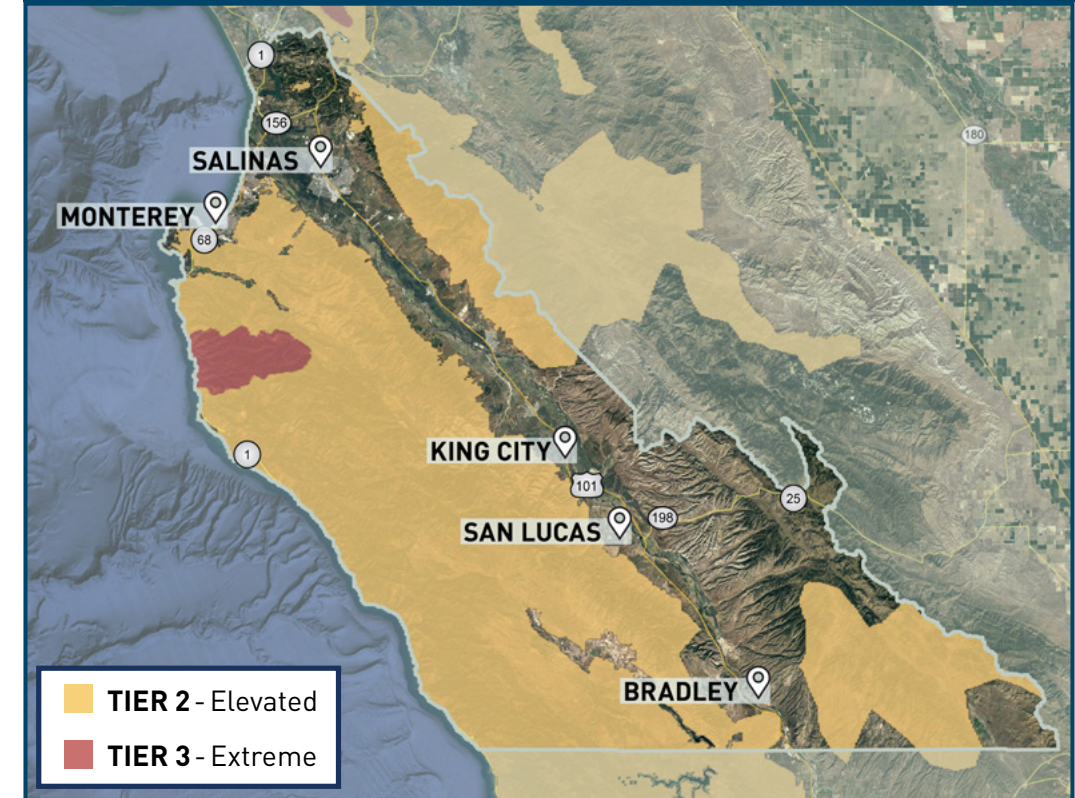


Click the clipboard icon
for key initiative descriptions

PG&E is prioritizing its wildfire safety work by:

- ✓ Locations with the highest risk of wildfire
- ✓ Locations that will make our system safer and lessen PSPS impacts

161,583 total customers served in Monterey County
10% located in high fire-threat areas



For more information about our wildfire safety work, visit:

pge.com/wildfiresafety



WILDFIRE SAFETY IMPROVEMENTS PROGRESS NAPA COUNTY

[CLICK HERE TO
RETURN TO MAIN PAGE](#)

Below is an overview of our progress on key wildfire safety improvement work as of December 31, 2021.

	COMPLETE THROUGH 2020 ¹		2021 TARGET	2021 COMPLETE	
Enhanced Vegetation Management Complete	160.8 Line Miles		26.1 Line Miles	29.2 Line Miles	
System Hardening Complete	78.3 Line Miles		4.9 Line Miles	4.9 Line Miles	
Transmission and Distribution Sectionalizing Devices Installed	61 Devices		40 Devices	28 Devices	
Weather Stations Installed	41 Stations		N/A ²	8 Stations	
High Definition Cameras Installed	8 Cameras		N/A ²	12 Cameras	
Community Resource Center (CRC) Sites Ready	4 Indoor	7 Outdoor	N/A ³	5 Indoor	8 Outdoor
Community-Based Organization (CBO) Partnerships in Place	3 Partnerships		N/A ⁴	1 Partnership	

¹ Cumulative progress from 2018 through 2020

² Locations were identified on a monthly basis

³ CRC planning for 2021 was conducted in coordination with local agencies and tribes

⁴ Systemwide 2021 target exceeded

Note: Additional wildfire safety work is being planned for 2022 and will be available in the next progress update. All work plans are subject to change due to weather, access or other schedule constraints.

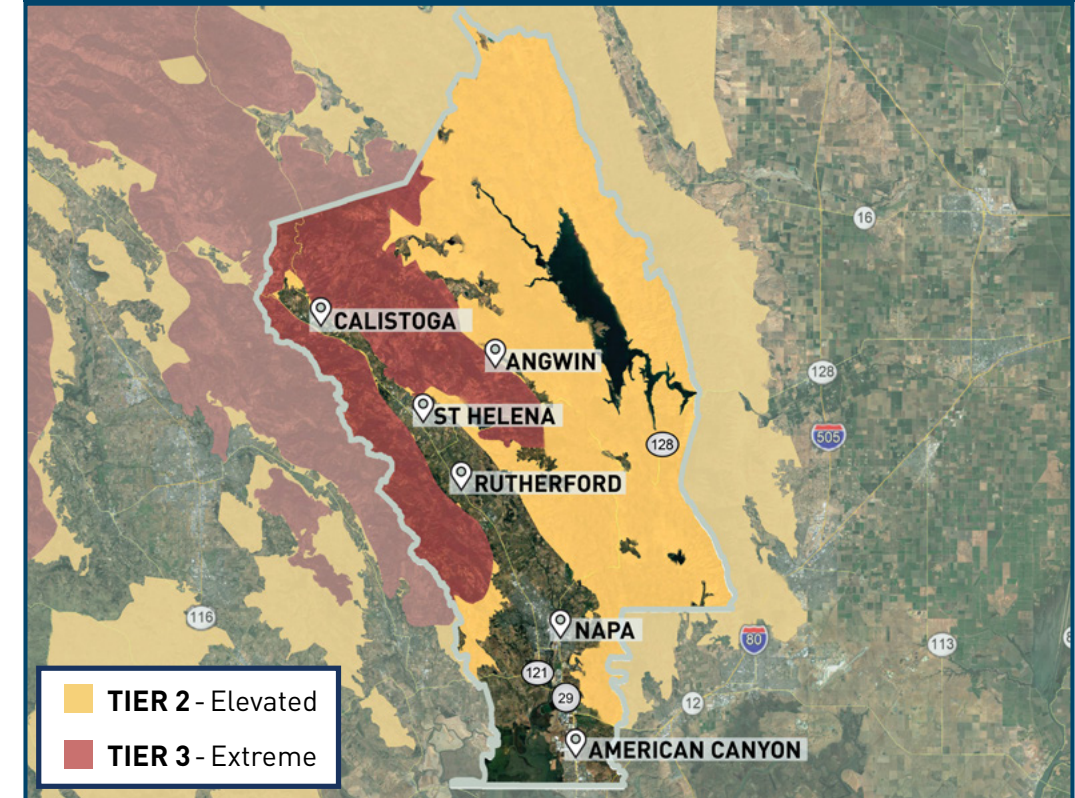


Click the clipboard icon
for key initiative descriptions

PG&E is prioritizing its wildfire safety work by:

- ✓ Locations with the highest risk of wildfire
- ✓ Locations that will make our system safer and lessen PSPS impacts

62,298 total customers served in Napa County
10% located in high fire-threat areas



For more information about our wildfire safety work, visit:

pge.com/wildfiresafety



WILDFIRE SAFETY IMPROVEMENTS PROGRESS NEVADA COUNTY

[CLICK HERE TO
RETURN TO MAIN PAGE](#)

Below is an overview of our progress on key wildfire safety improvement work as of December 31, 2021.

	COMPLETE THROUGH 2020 ¹	2021 TARGET	2021 COMPLETE
Enhanced Vegetation Management Complete	92.3 Line Miles	31.1 Line Miles	152.1 Line Miles
System Hardening Complete	36.2 Line Miles	16.8 Line Miles	16.8 Line Miles
Transmission and Distribution Sectionalizing Devices Installed	20 Devices	8 Devices	8 Devices
Weather Stations Installed	22 Stations	N/A ²	3 Stations
High Definition Cameras Installed	7 Cameras	N/A ²	0 Cameras
Community Resource Center (CRC) Sites Ready	5 Indoor 6 Outdoor	N/A ³	5 Indoor 7 Outdoor
Community-Based Organization (CBO) Partnerships in Place	3 Partnerships	N/A ⁴	0 Partnerships

¹ Cumulative progress from 2018 through 2020

² Locations were identified on a monthly basis

³ CRC planning for 2021 was conducted in coordination with local agencies and tribes

⁴ Systemwide 2021 target exceeded

Note: Additional wildfire safety work is being planned for 2022 and will be available in the next progress update. All work plans are subject to change due to weather, access or other schedule constraints.

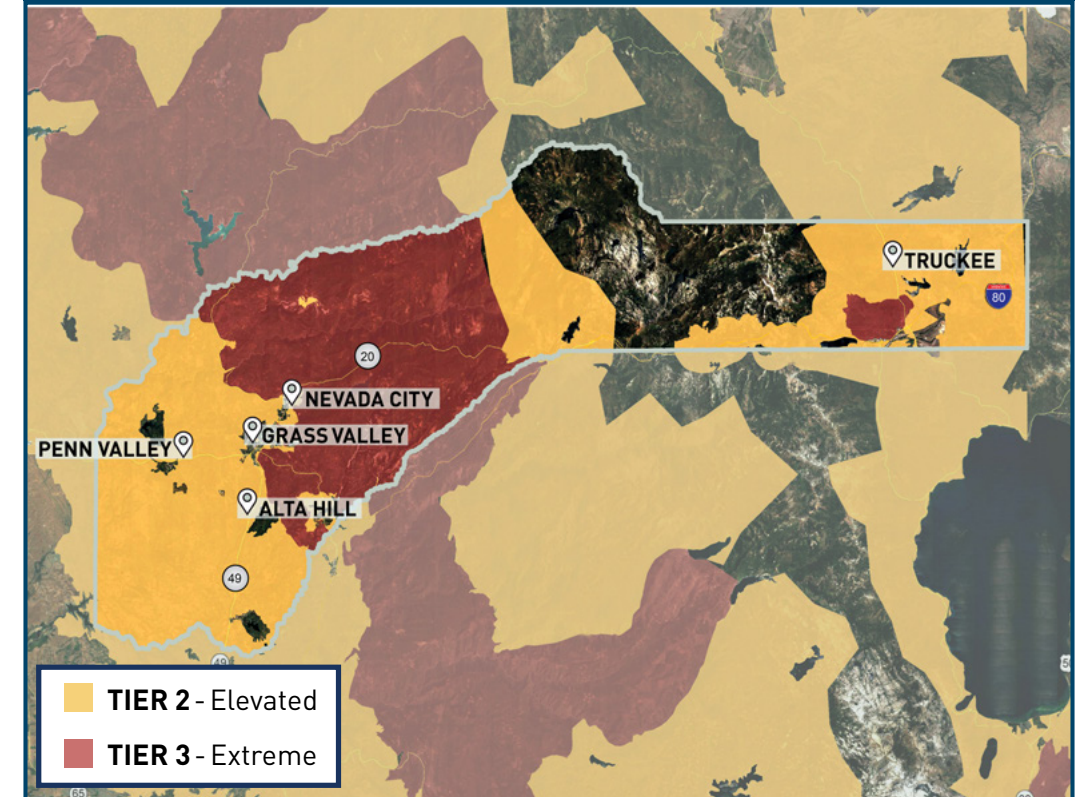


Click the clipboard icon
for key initiative descriptions

PG&E is prioritizing its wildfire safety work by:

- ✓ Locations with the highest risk of wildfire
- ✓ Locations that will make our system safer and lessen PSPS impacts

41,955 total customers served in Nevada County
64% located in high fire-threat areas



For more information about our wildfire safety work, visit:

pge.com/wildfiresafety



WILDFIRE SAFETY IMPROVEMENTS PROGRESS PLACER COUNTY

[CLICK HERE TO
RETURN TO MAIN PAGE](#)

Below is an overview of our progress on key wildfire safety improvement work as of December 31, 2021.

	COMPLETE THROUGH 2020 ¹		2021 TARGET	2021 COMPLETE	
Enhanced Vegetation Management Complete	83.6 Line Miles		16.7 Line Miles	126.3 Line Miles	
System Hardening Complete	3.3 Line Miles		1.9 Line Miles	1.9 Line Miles	
Transmission and Distribution Sectionalizing Devices Installed	33 Devices		5 Devices	13 Devices	
Weather Stations Installed	18 Stations		N/A ²	4 Stations	
High Definition Cameras Installed	8 Cameras		N/A ²	2 Cameras	
Community Resource Center (CRC) Sites Ready	5 Indoor	5 Outdoor	N/A ³	5 Indoor	5 Outdoor
Community-Based Organization (CBO) Partnerships in Place	2 Partnerships		N/A ⁴	1 Partnership	

¹ Cumulative progress from 2018 through 2020

² Locations were identified on a monthly basis

³ CRC planning for 2021 was conducted in coordination with local agencies and tribes

⁴ Systemwide 2021 target exceeded

Note: Additional wildfire safety work is being planned for 2022 and will be available in the next progress update. All work plans are subject to change due to weather, access or other schedule constraints.

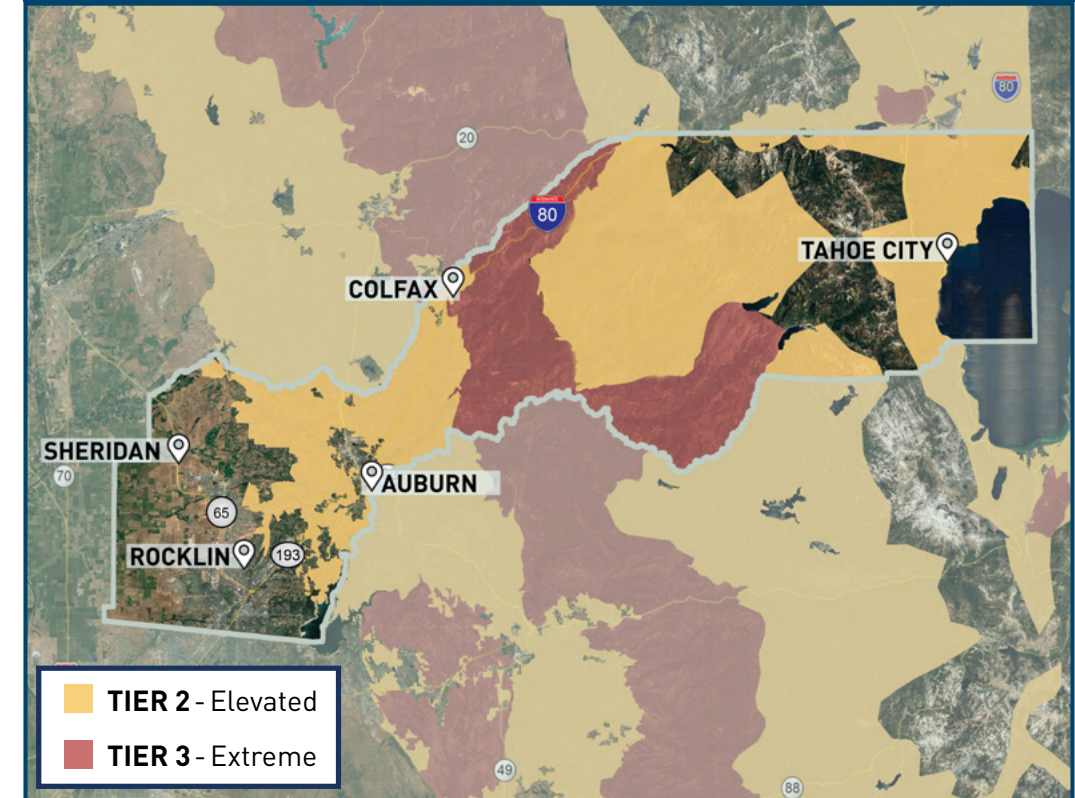


Click the clipboard icon
for key initiative descriptions

PG&E is prioritizing its wildfire safety work by:

- ✓ Locations with the highest risk of wildfire
- ✓ Locations that will make our system safer and lessen PSPS impacts

105,548 total customers served in Placer County
20% located in high fire-threat areas



For more information about our wildfire safety work, visit:

pge.com/wildfiresafety



WILDFIRE SAFETY IMPROVEMENTS PROGRESS PLUMAS COUNTY

[CLICK HERE TO
RETURN TO MAIN PAGE](#)

Below is an overview of our progress on key wildfire safety improvement work as of December 31, 2021.

	COMPLETE THROUGH 2020 ¹	2021 TARGET	2021 COMPLETE
Enhanced Vegetation Management Complete	2.1 Line Miles	0 Line Miles	0 Line Miles
System Hardening Complete	1.8 Line Miles	3 Line Miles	3 Line Miles
Transmission and Distribution Sectionalizing Devices Installed	17 Devices	1 Device	1 Device
Weather Stations Installed	9 Stations	N/A ²	4 Stations
High Definition Cameras Installed	13 Cameras	N/A ²	0 Cameras
Community Resource Center (CRC) Sites Ready	1 Indoor 6 Outdoor	N/A ³	2 Indoor 6 Outdoor
Community-Based Organization (CBO) Partnerships in Place	1 Partnership	N/A ⁴	1 Partnership

¹ Cumulative progress from 2018 through 2020

² Locations were identified on a monthly basis

³ CRC planning for 2021 was conducted in coordination with local agencies and tribes

⁴ Systemwide 2021 target exceeded

Note: Additional wildfire safety work is being planned for 2022 and will be available in the next progress update. All work plans are subject to change due to weather, access or other schedule constraints.

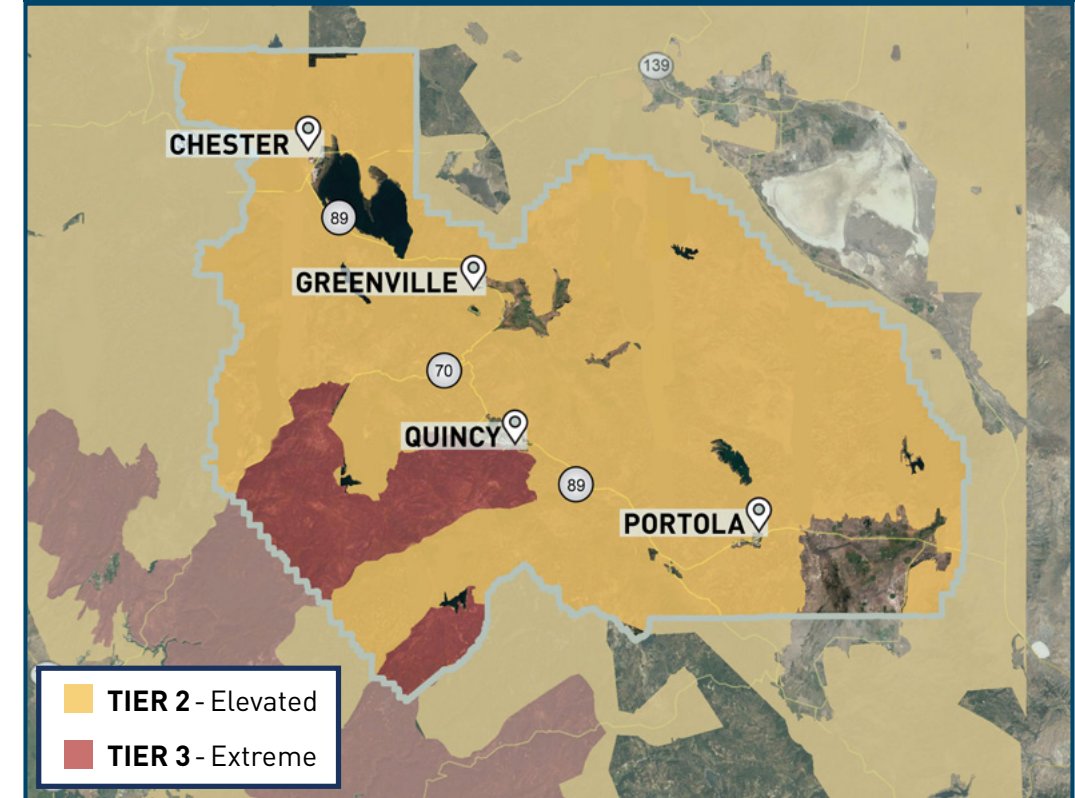


Click the clipboard icon
for key initiative descriptions

PG&E is prioritizing its wildfire safety work by:

- ✓ Locations with the highest risk of wildfire
- ✓ Locations that will make our system safer and lessen PSPS impacts

10,793 total customers served in Plumas County
40% located in high fire-threat areas



For more information about our wildfire safety work, visit:

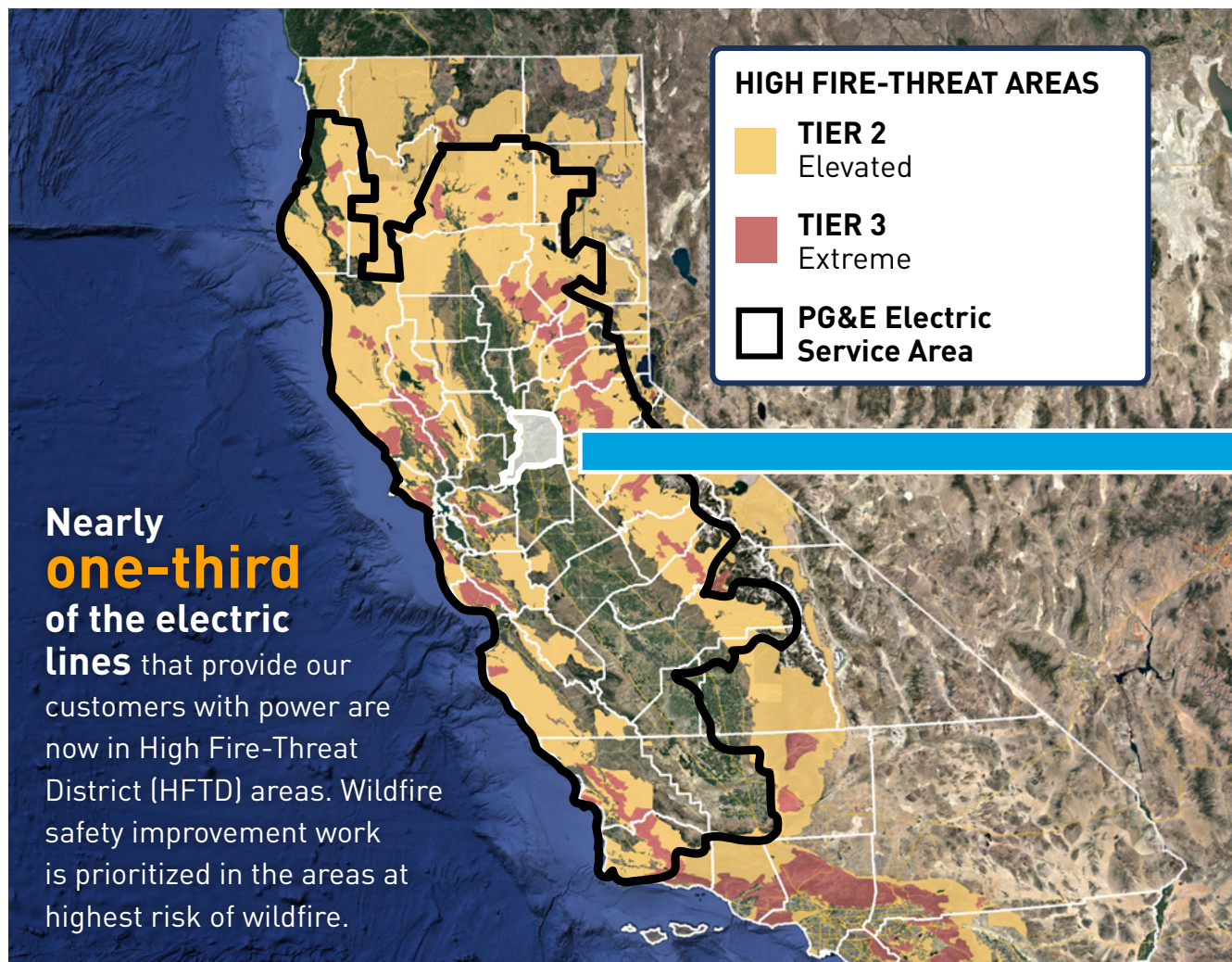
pge.com/wildfiresafety



WILDFIRE SAFETY IMPROVEMENTS PROGRESS SACRAMENTO COUNTY

[CLICK HERE TO
RETURN TO MAIN PAGE](#)

There are no high fire-threat areas in this county. For that reason, no wildfire safety work was conducted in 2021.



Source: California Public Utilities Commission (CPUC); ia.cpuc.ca.gov/FireMap

PG&E is prioritizing its wildfire safety work by:

- ✓ Locations with the highest risk of wildfire
- ✓ Locations that will make our system safer and lessen PSPS impacts



For more information about our wildfire safety work, visit:

pge.com/wildfiresafety



WILDFIRE SAFETY IMPROVEMENTS PROGRESS SAN BENITO COUNTY

[CLICK HERE TO
RETURN TO MAIN PAGE](#)

Below is an overview of our progress on key wildfire safety improvement work as of December 31, 2021.

	COMPLETE THROUGH 2020 ¹	2021 TARGET	2021 COMPLETE
Enhanced Vegetation Management Complete	2.3 Line Miles	0 Line Miles	0 Line Miles
System Hardening Complete	0 Line Miles	0 Line Miles	0 Line Miles
Transmission and Distribution Sectionalizing Devices Installed	12 Devices	0 Devices	0 Devices
Weather Stations Installed	20 Stations	N/A ²	4 Stations
High Definition Cameras Installed	4 Cameras	N/A ²	2 Cameras
Community Resource Center (CRC) Sites Ready	0 Indoor 3 Outdoor	N/A ³	0 Indoor 3 Outdoor
Community-Based Organization (CBO) Partnerships in Place	0 Partnerships	N/A ⁴	0 Partnerships

¹ Cumulative progress from 2018 through 2020

² Locations were identified on a monthly basis

³ CRC planning for 2021 was conducted in coordination with local agencies and tribes

⁴ Systemwide 2021 target exceeded

Note: Additional wildfire safety work is being planned for 2022 and will be available in the next progress update. All work plans are subject to change due to weather, access or other schedule constraints.

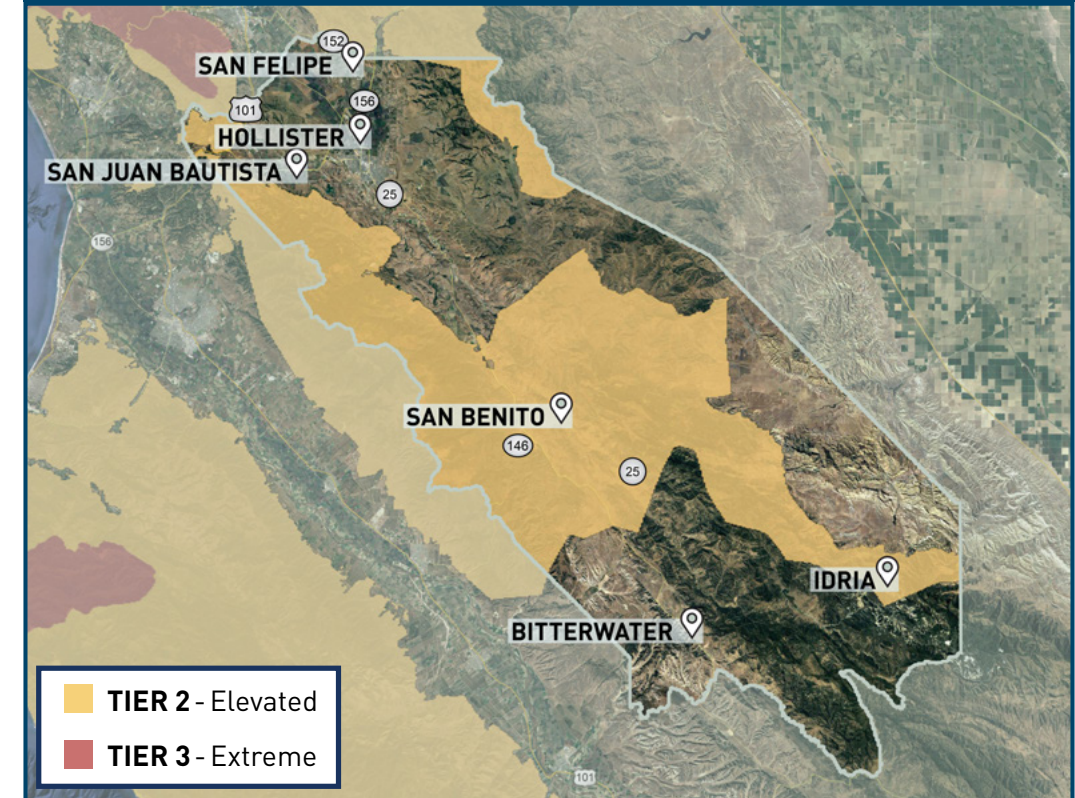


Click the clipboard icon
for key initiative descriptions

PG&E is prioritizing its wildfire safety work by:

- ✓ Locations with the highest risk of wildfire
- ✓ Locations that will make our system safer and lessen PSPS impacts

24,334 total customers served in San Benito County
6% located in high fire-threat areas



For more information about our wildfire safety work, visit:

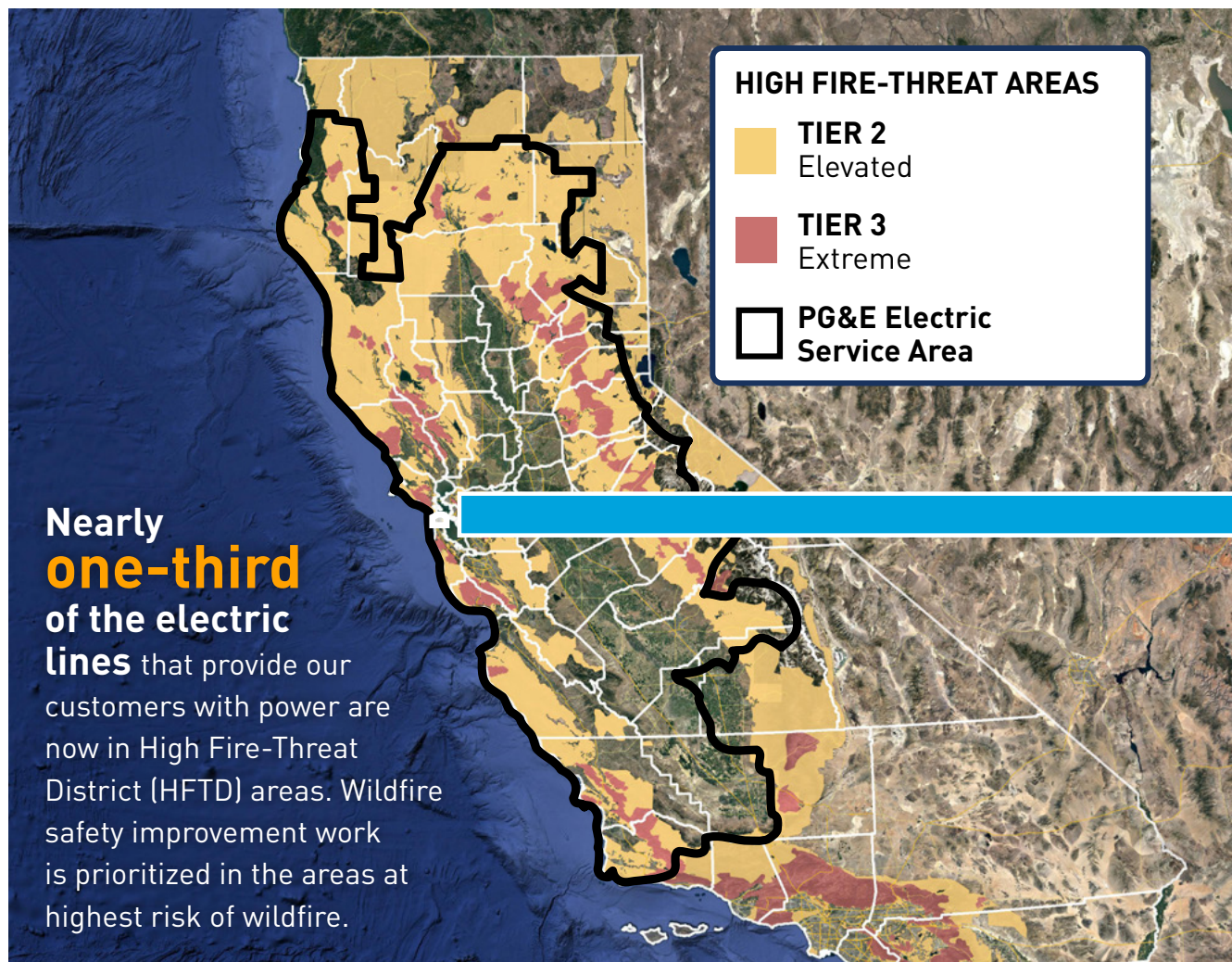
pge.com/wildfiresafety



WILDFIRE SAFETY IMPROVEMENTS PROGRESS SAN FRANCISCO COUNTY

[CLICK HERE TO
RETURN TO MAIN PAGE](#)

There are no high fire-threat areas in this county. For that reason, no wildfire safety work was conducted in 2021.



Source: California Public Utilities Commission (CPUC); ia.cpuc.ca.gov/FireMap

PG&E is prioritizing its wildfire safety work by:

- ✓ Locations with the highest risk of wildfire
- ✓ Locations that will make our system safer and lessen PSPS impacts



For more information about our wildfire safety work, visit:

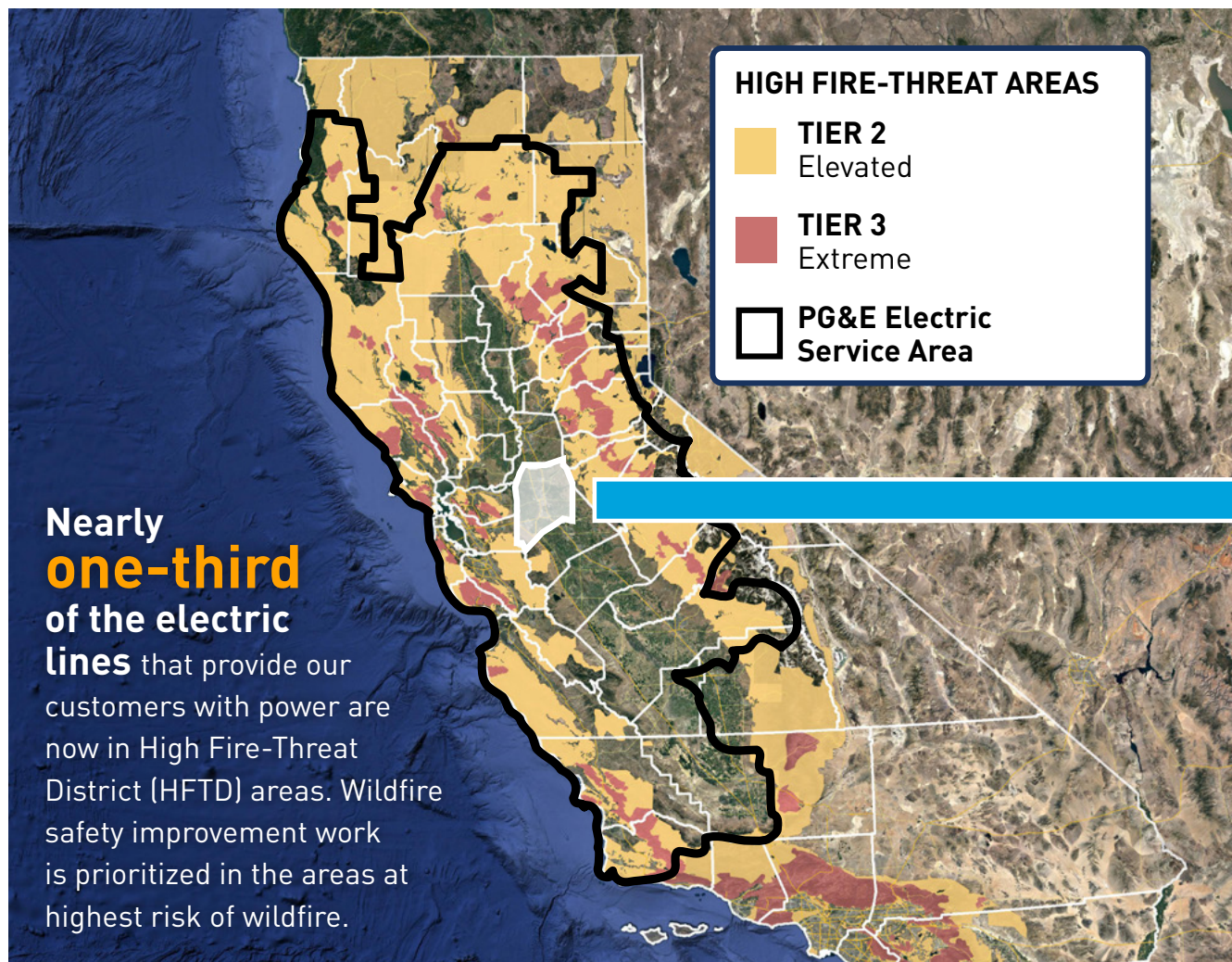
pge.com/wildfiresafety



WILDFIRE SAFETY IMPROVEMENTS PROGRESS SAN JOAQUIN COUNTY

[CLICK HERE TO
RETURN TO MAIN PAGE](#)

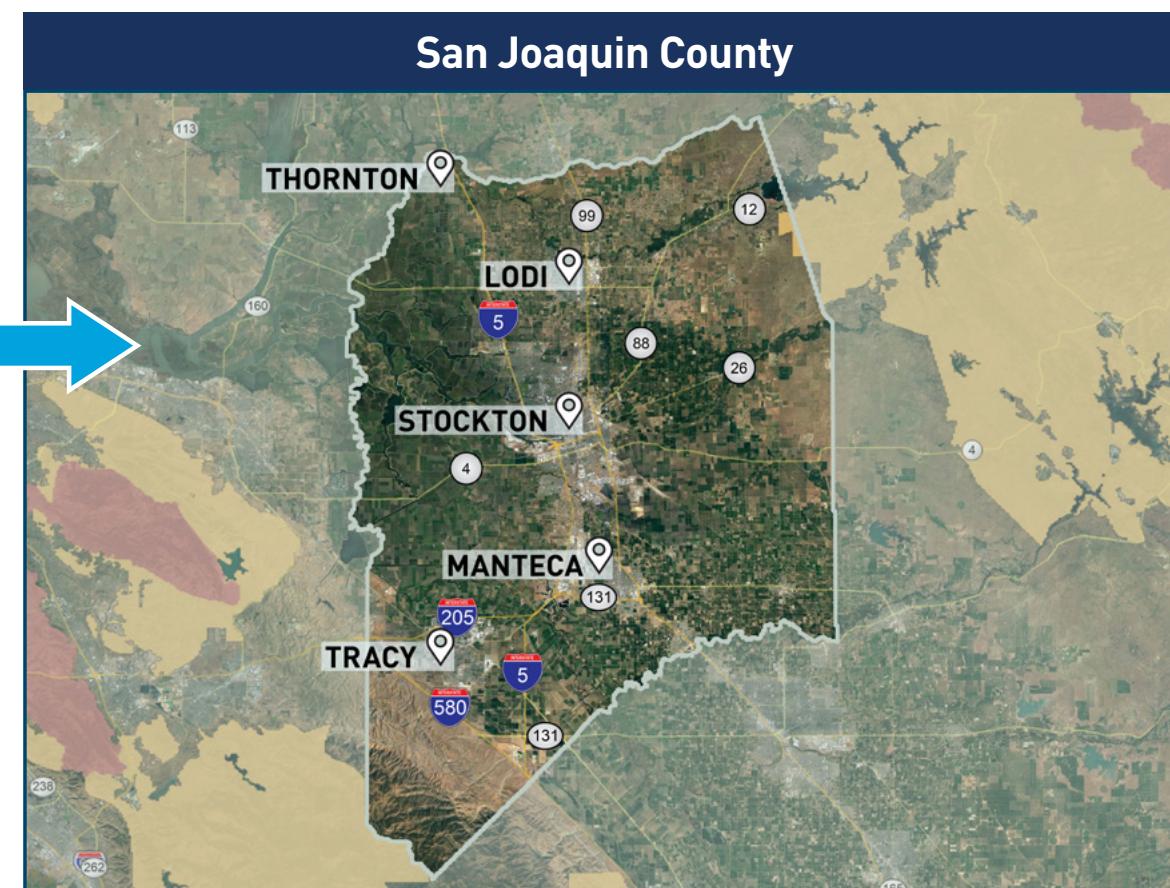
There are no high fire-threat areas in this county. For that reason, no wildfire safety work was conducted in 2021.



Source: California Public Utilities Commission (CPUC); ia.cpuc.ca.gov/FireMap

PG&E is prioritizing its wildfire safety work by:

- ✓ Locations with the highest risk of wildfire
- ✓ Locations that will make our system safer and lessen PSPS impacts



For more information about our wildfire safety work, visit:

pge.com/wildfiresafety



WILDFIRE SAFETY IMPROVEMENTS PROGRESS SAN LUIS OBISPO COUNTY

[CLICK HERE TO
RETURN TO MAIN PAGE](#)

Below is an overview of our progress on key wildfire safety improvement work as of December 31, 2021.

	COMPLETE THROUGH 2020 ¹	2021 TARGET	2021 COMPLETE
Enhanced Vegetation Management Complete	179.3 Line Miles	2.3 Line Miles	14.1 Line Miles
System Hardening Complete	2.6 Line Miles	5.3 Line Miles	5.3 Line Miles
Transmission and Distribution Sectionalizing Devices Installed	50 Devices	3 Devices	3 Devices
Weather Stations Installed	65 Stations	N/A ²	16 Stations
High Definition Cameras Installed	10 Cameras	N/A ²	19 Cameras
Community Resource Center (CRC) Sites Ready	0 Indoor 5 Outdoor	N/A ³	0 Indoor 6 Outdoor
Community-Based Organization (CBO) Partnerships in Place	0 Partnerships	N/A ⁴	0 Partnerships

¹ Cumulative progress from 2018 through 2020

² Locations were identified on a monthly basis

³ CRC planning for 2021 was conducted in coordination with local agencies and tribes

⁴ Systemwide 2021 target exceeded

Note: Additional wildfire safety work is being planned for 2022 and will be available in the next progress update. All work plans are subject to change due to weather, access or other schedule constraints.

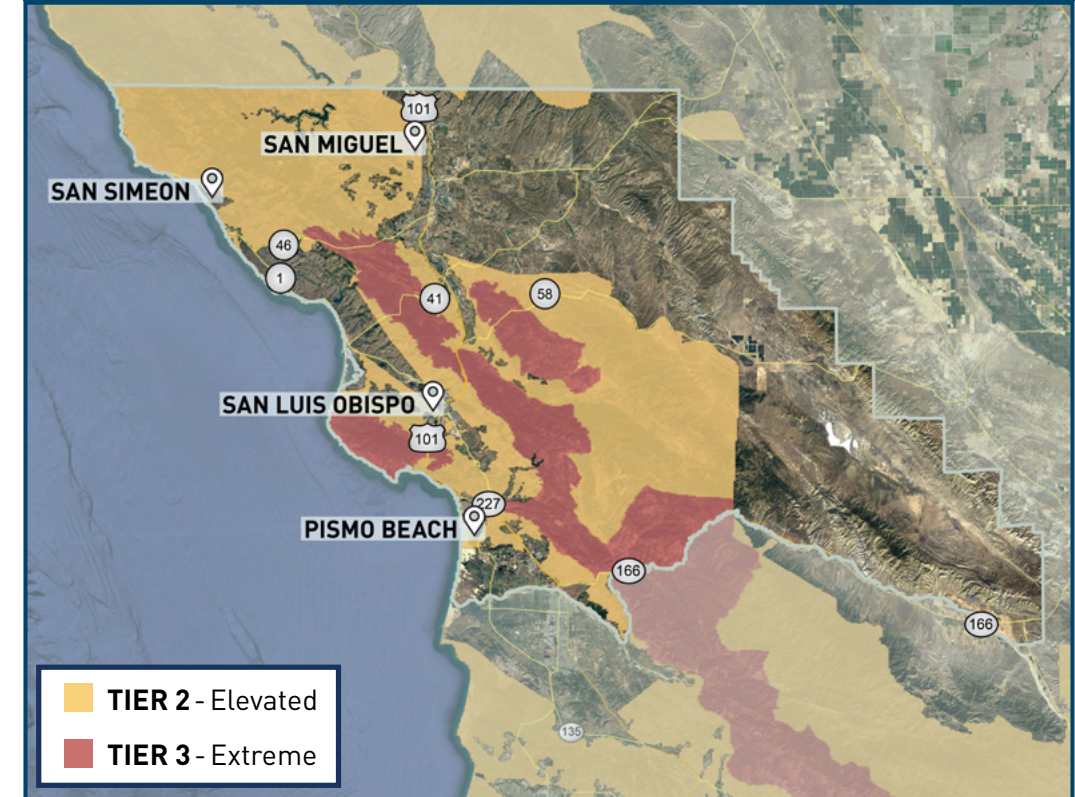


Click the clipboard icon
for key initiative descriptions

PG&E is prioritizing its wildfire safety work by:

- ✓ Locations with the highest risk of wildfire
- ✓ Locations that will make our system safer and lessen PSPS impacts

139,430 total customers served in San Luis Obispo County
17% located in high fire-threat areas



For more information about our wildfire safety work, visit:

pge.com/wildfiresafety



WILDFIRE SAFETY IMPROVEMENTS PROGRESS SAN MATEO COUNTY

[CLICK HERE TO
RETURN TO MAIN PAGE](#)

Below is an overview of our progress on key wildfire safety improvement work as of December 31, 2021.

	COMPLETE THROUGH 2020 ¹	2021 TARGET	2021 COMPLETE
Enhanced Vegetation Management Complete	65.9 Line Miles	7.9 Line Miles	4.2 Line Miles
System Hardening Complete	1.7 Line Miles	0 Line Miles	0 Line Miles
Transmission and Distribution Sectionalizing Devices Installed	43 Devices	20 Devices	19 Devices
Weather Stations Installed	17 Stations	N/A ²	9 Stations
High Definition Cameras Installed	6 Cameras	N/A ²	7 Cameras
Community Resource Center (CRC) Sites Ready	5 Indoor 7 Outdoor	N/A ³	6 Indoor 6 Outdoor
Community-Based Organization (CBO) Partnerships in Place	4 Partnerships	N/A ⁴	0 Partnerships

¹ Cumulative progress from 2018 through 2020

² Locations were identified on a monthly basis

³ CRC planning for 2021 was conducted in coordination with local agencies and tribes

⁴ Systemwide 2021 target exceeded

Note: Additional wildfire safety work is being planned for 2022 and will be available in the next progress update. All work plans are subject to change due to weather, access or other schedule constraints.

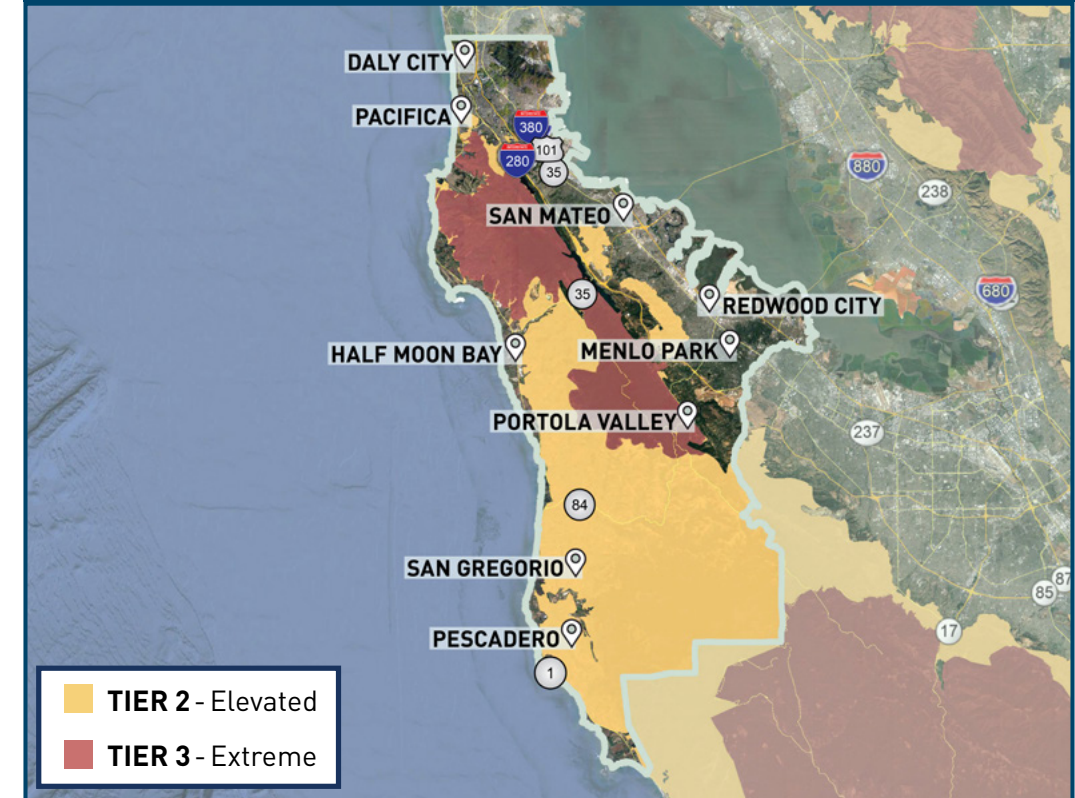


Click the clipboard icon
for key initiative descriptions

PG&E is prioritizing its wildfire safety work by:

- ✓ Locations with the highest risk of wildfire
- ✓ Locations that will make our system safer and lessen PSPS impacts

301,234 total customers served in San Mateo County
5% located in high fire-threat areas



For more information about our wildfire safety work, visit:

pge.com/wildfiresafety



WILDFIRE SAFETY IMPROVEMENTS PROGRESS SANTA BARBARA COUNTY

[CLICK HERE TO
RETURN TO MAIN PAGE](#)

Below is an overview of our progress on key wildfire safety improvement work as of December 31, 2021.

	COMPLETE THROUGH 2020 ¹	2021 TARGET	2021 COMPLETE
Enhanced Vegetation Management Complete	67.1 Line Miles	2.8 Line Miles	33.4 Line Miles
System Hardening Complete	4.7 Line Miles	0.9 Line Miles	0.9 Line Miles
Transmission and Distribution Sectionalizing Devices Installed	11 Devices	0 Devices	0 Devices
Weather Stations Installed	20 Stations	N/A ²	4 Stations
High Definition Cameras Installed	16 Cameras	N/A ²	2 Cameras
Community Resource Center (CRC) Sites Ready	0 Indoor 6 Outdoor	N/A ³	0 Indoor 8 Outdoor
Community-Based Organization (CBO) Partnerships in Place	1 Partnership	N/A ⁴	0 Partnerships

¹ Cumulative progress from 2018 through 2020

² Locations were identified on a monthly basis

³ CRC planning for 2021 was conducted in coordination with local agencies and tribes

⁴ Systemwide 2021 target exceeded

Note: Additional wildfire safety work is being planned for 2022 and will be available in the next progress update. All work plans are subject to change due to weather, access or other schedule constraints.



Click the clipboard icon
for key initiative descriptions

PG&E is prioritizing its wildfire safety work by:

- ✓ Locations with the highest risk of wildfire
- ✓ Locations that will make our system safer and lessen PSPS impacts

67,982 total customers served in Santa Barbara County
6% located in high fire-threat areas



For more information about our wildfire safety work, visit:

pge.com/wildfiresafety



WILDFIRE SAFETY IMPROVEMENTS PROGRESS SANTA CLARA COUNTY

[CLICK HERE TO
RETURN TO MAIN PAGE](#)

Below is an overview of our progress on key wildfire safety improvement work as of December 31, 2021.

	COMPLETE THROUGH 2020 ¹	2021 TARGET	2021 COMPLETE
Enhanced Vegetation Management Complete	6 Line Miles	0 Line Miles	2.5 Line Miles
System Hardening Complete	13.1 Line Miles	0.1 Line Miles	0.1 Line Miles
Transmission and Distribution Sectionalizing Devices Installed	65 Devices	17 Devices	17 Devices
Weather Stations Installed	42 Stations	N/A ²	9 Stations
High Definition Cameras Installed	16 Cameras	N/A ²	4 Cameras
Community Resource Center (CRC) Sites Ready	2 Indoor 10 Outdoor	N/A ³	3 Indoor 11 Outdoor
Community-Based Organization (CBO) Partnerships in Place	1 Partnership	N/A ⁴	0 Partnerships

¹ Cumulative progress from 2018 through 2020

² Locations were identified on a monthly basis

³ CRC planning for 2021 was conducted in coordination with local agencies and tribes

⁴ Systemwide 2021 target exceeded

Note: Additional wildfire safety work is being planned for 2022 and will be available in the next progress update. All work plans are subject to change due to weather, access or other schedule constraints.

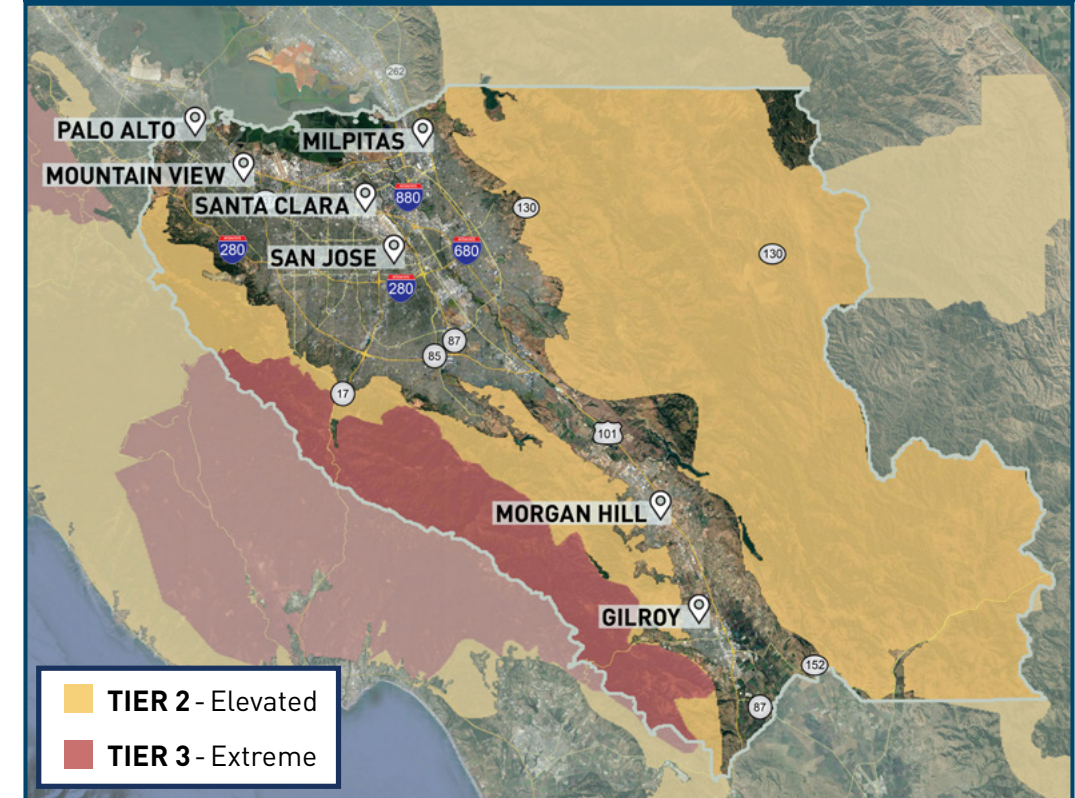


Click the clipboard icon
for key initiative descriptions

PG&E is prioritizing its wildfire safety work by:

- ✓ Locations with the highest risk of wildfire
- ✓ Locations that will make our system safer and lessen PSPS impacts

640,832 total customers served in Santa Clara County
2% located in high fire-threat areas



For more information about our wildfire safety work, visit:

pge.com/wildfiresafety



WILDFIRE SAFETY IMPROVEMENTS PROGRESS SANTA CRUZ COUNTY

[CLICK HERE TO
RETURN TO MAIN PAGE](#)

Below is an overview of our progress on key wildfire safety improvement work as of December 31, 2021.

	COMPLETE THROUGH 2020 ¹	2021 TARGET	2021 COMPLETE
Enhanced Vegetation Management Complete	2.6 Line Miles	0 Line Miles	0 Line Miles
System Hardening Complete	23.9 Line Miles	4.4 Line Miles	4.4 Line Miles
Transmission and Distribution Sectionalizing Devices Installed	28 Devices	19 Devices	15 Devices
Weather Stations Installed	19 Stations	N/A ²	4 Stations
High Definition Cameras Installed	2 Cameras	N/A ²	4 Cameras
Community Resource Center (CRC) Sites Ready	0 Indoor 5 Outdoor	N/A ³	1 Indoor 5 Outdoor
Community-Based Organization (CBO) Partnerships in Place	2 Partnerships	N/A ⁴	0 Partnerships

¹ Cumulative progress from 2018 through 2020

² Locations were identified on a monthly basis

³ CRC planning for 2021 was conducted in coordination with local agencies and tribes

⁴ Systemwide 2021 target exceeded

Note: Additional wildfire safety work is being planned for 2022 and will be available in the next progress update. All work plans are subject to change due to weather, access or other schedule constraints.

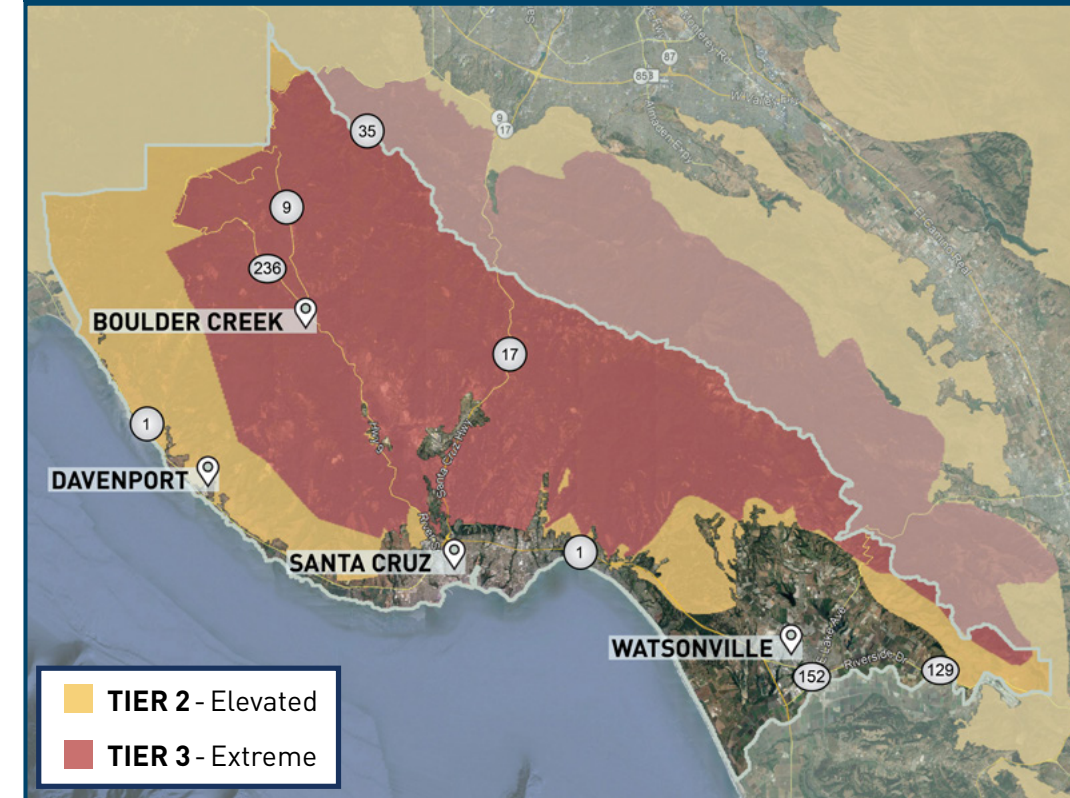


Click the clipboard icon
for key initiative descriptions

PG&E is prioritizing its wildfire safety work by:

- ✓ Locations with the highest risk of wildfire
- ✓ Locations that will make our system safer and lessen PSPS impacts

106,129 total customers served in Santa Cruz County
22% located in high fire-threat areas



For more information about our wildfire safety work, visit:

pge.com/wildfiresafety



WILDFIRE SAFETY IMPROVEMENTS PROGRESS SHASTA COUNTY

[CLICK HERE TO
RETURN TO MAIN PAGE](#)

Below is an overview of our progress on key wildfire safety improvement work as of December 31, 2021.

	COMPLETE THROUGH 2020 ¹	2021 TARGET	2021 COMPLETE
Enhanced Vegetation Management Complete	144.6 Line Miles	186.8 Line Miles	335.4 Line Miles
System Hardening Complete	46.4 Line Miles	15 Line Miles	15 Line Miles
Transmission and Distribution Sectionalizing Devices Installed	30 Devices	30 Devices	18 Devices
Weather Stations Installed	62 Stations	N/A ²	20 Stations
High Definition Cameras Installed	16 Cameras	N/A ²	2 Cameras
Community Resource Center (CRC) Sites Ready	5 Indoor 12 Outdoor	N/A ³	5 Indoor 11 Outdoor
Community-Based Organization (CBO) Partnerships in Place	2 Partnerships	N/A ⁴	0 Partnerships

¹ Cumulative progress from 2018 through 2020

² Locations were identified on a monthly basis

³ CRC planning for 2021 was conducted in coordination with local agencies and tribes

⁴ Systemwide 2021 target exceeded

Note: Additional wildfire safety work is being planned for 2022 and will be available in the next progress update. All work plans are subject to change due to weather, access or other schedule constraints.

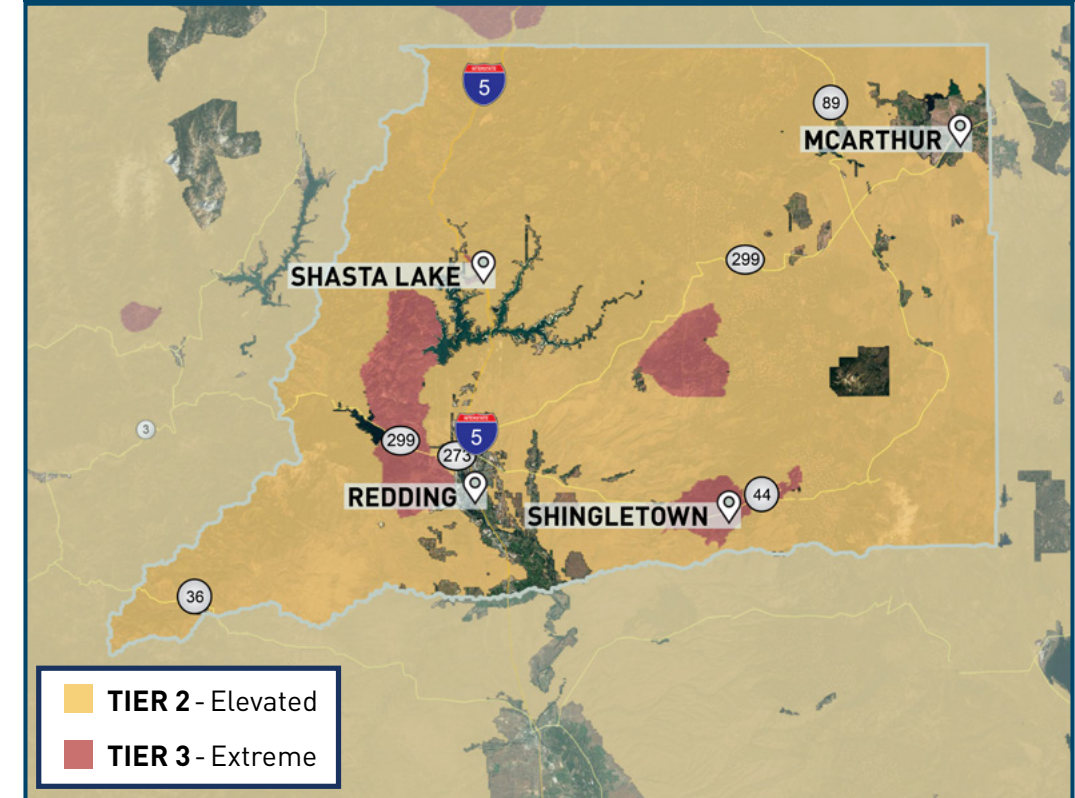


Click the clipboard icon
for key initiative descriptions

PG&E is prioritizing its wildfire safety work by:

- ✓ Locations with the highest risk of wildfire
- ✓ Locations that will make our system safer and lessen PSPS impacts

38,358 total customers served in Shasta County
57% located in high fire-threat areas



For more information about our wildfire safety work, visit:

pge.com/wildfiresafety



WILDFIRE SAFETY IMPROVEMENTS PROGRESS SIERRA COUNTY

[CLICK HERE TO
RETURN TO MAIN PAGE](#)

Below is an overview of our progress on key wildfire safety improvement work as of December 31, 2021.

	COMPLETE THROUGH 2020 ¹	2021 TARGET	2021 COMPLETE
Enhanced Vegetation Management Complete	0 Line Miles	14.9 Line Miles	6.2 Line Miles
System Hardening Complete	0 Line Miles	0.7 Line Miles	0.7 Line Miles
Transmission and Distribution Sectionalizing Devices Installed	0 Devices	1 Device	0 Devices
Weather Stations Installed	3 Stations	N/A ²	0 Stations
High Definition Cameras Installed	1 Camera	N/A ²	6 Cameras
Community Resource Center (CRC) Sites Ready	2 Indoor 3 Outdoor	N/A ³	2 Indoor 3 Outdoor
Community-Based Organization (CBO) Partnerships in Place	1 Partnership	N/A ⁴	0 Partnerships

¹ Cumulative progress from 2018 through 2020

² Locations were identified on a monthly basis

³ CRC planning for 2021 was conducted in coordination with local agencies and tribes

⁴ Systemwide 2021 target exceeded

Note: Additional wildfire safety work is being planned for 2022 and will be available in the next progress update. All work plans are subject to change due to weather, access or other schedule constraints.

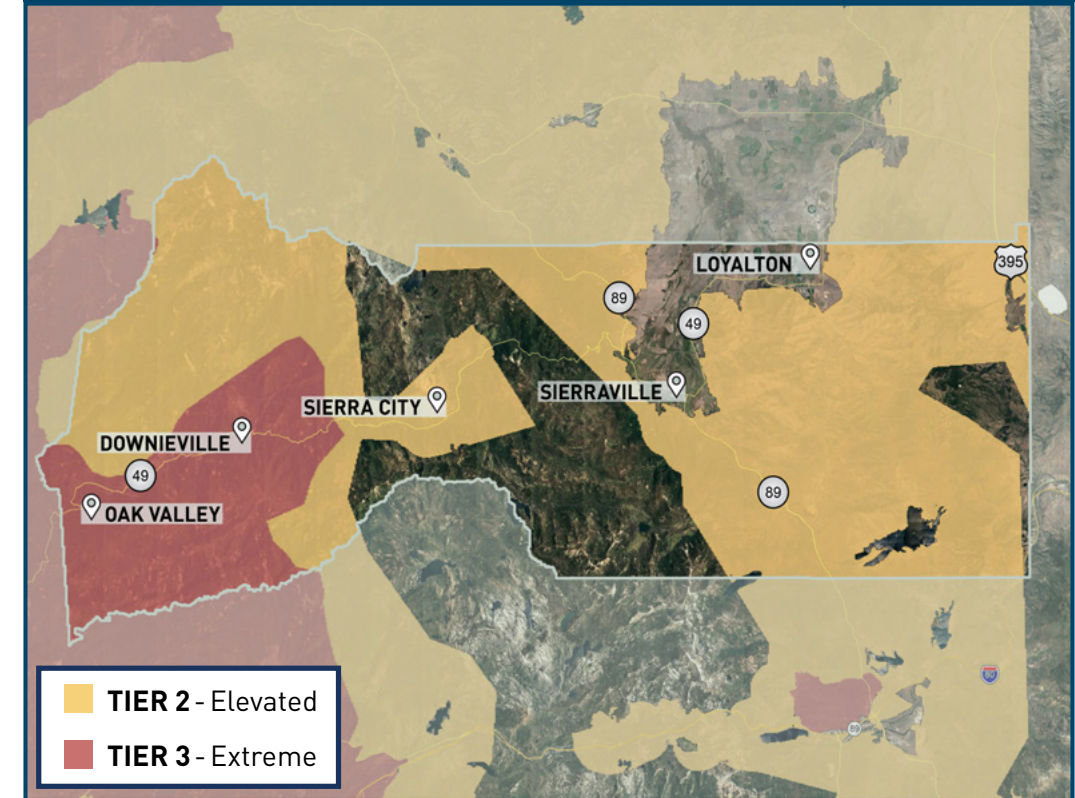


Click the clipboard icon
for key initiative descriptions

PG&E is prioritizing its wildfire safety work by:

- ✓ Locations with the highest risk of wildfire
- ✓ Locations that will make our system safer and lessen PSPS impacts

1,096 total customers served in Sierra County
91% located in high fire-threat areas



For more information about our wildfire safety work, visit:

pge.com/wildfiresafety



WILDFIRE SAFETY IMPROVEMENTS PROGRESS SISKIYOU COUNTY

[CLICK HERE TO
RETURN TO MAIN PAGE](#)

Below is an overview of our progress on key wildfire safety improvement work as of December 31, 2021.

	COMPLETE THROUGH 2020 ¹	2021 TARGET	2021 COMPLETE
Enhanced Vegetation Management Complete	0 Line Miles	3.6 Line Miles	0.2 Line Miles
System Hardening Complete	0 Line Miles	0 Line Miles	0 Line Miles
Transmission and Distribution Sectionalizing Devices Installed	0 Devices	0 Devices	0 Devices
Weather Stations Installed	0 Stations	N/A ²	0 Stations
High Definition Cameras Installed	2 Cameras	N/A ²	0 Cameras
Community Resource Center (CRC) Sites Ready	0 Indoor 0 Outdoor	N/A ³	0 Indoor 0 Outdoor
Community-Based Organization (CBO) Partnerships in Place	0 Partnerships	N/A ⁴	0 Partnerships

¹ Cumulative progress from 2018 through 2020

² Locations were identified on a monthly basis

³ CRC planning for 2021 was conducted in coordination with local agencies and tribes

⁴ Systemwide 2021 target exceeded

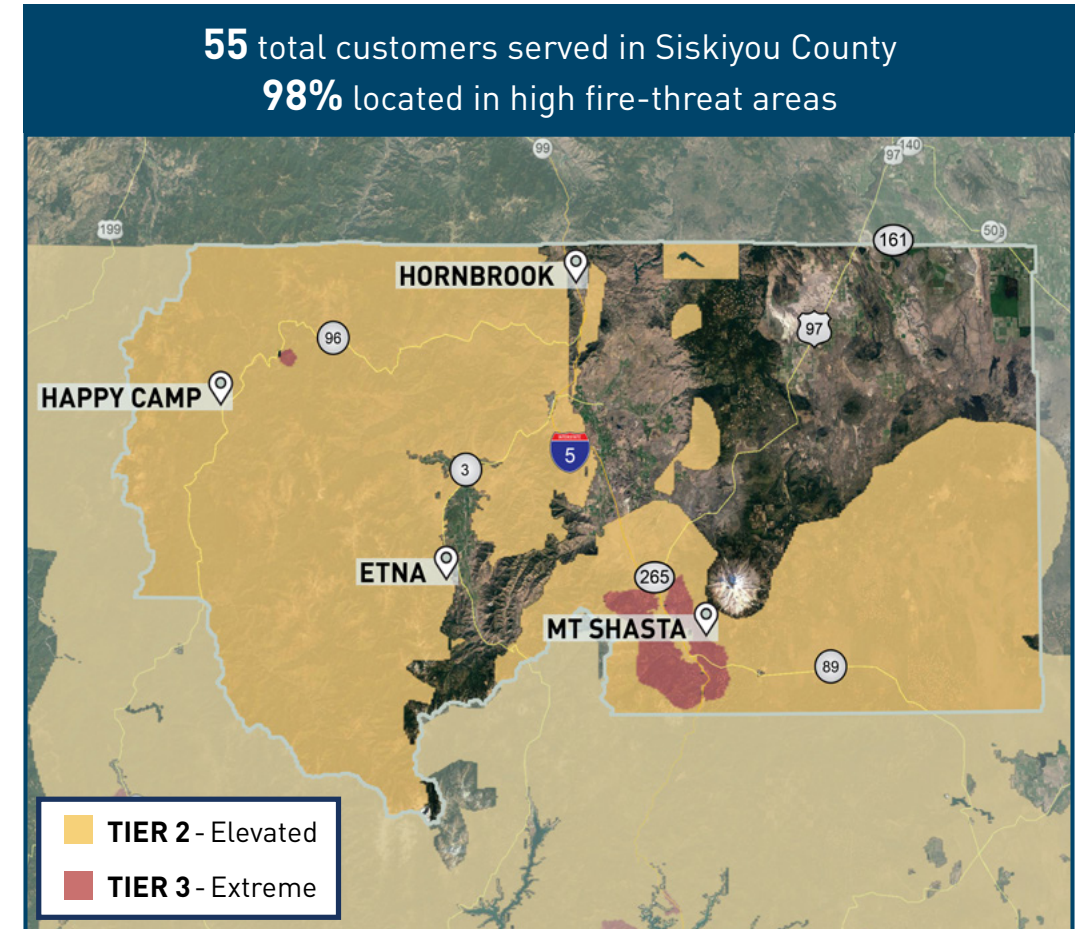
Note: Additional wildfire safety work is being planned for 2022 and will be available in the next progress update. All work plans are subject to change due to weather, access or other schedule constraints.



Click the clipboard icon
for key initiative descriptions

PG&E is prioritizing its wildfire safety work by:

- ✓ Locations with the highest risk of wildfire
- ✓ Locations that will make our system safer and lessen PSPS impacts



For more information about our wildfire safety work, visit:

pge.com/wildfiresafety



WILDFIRE SAFETY IMPROVEMENTS PROGRESS SOLANO COUNTY

[CLICK HERE TO
RETURN TO MAIN PAGE](#)

Below is an overview of our progress on key wildfire safety improvement work as of December 31, 2021.

	COMPLETE THROUGH 2020 ¹	2021 TARGET	2021 COMPLETE
Enhanced Vegetation Management Complete	28.8 Line Miles	2.9 Line Miles	35.9 Line Miles
System Hardening Complete	19.7 Line Miles	2 Line Miles	2 Line Miles
Transmission and Distribution Sectionalizing Devices Installed	23 Devices	5 Devices	5 Devices
Weather Stations Installed	13 Stations	N/A ²	2 Stations
High Definition Cameras Installed	1 Camera	N/A ²	5 Cameras
Community Resource Center (CRC) Sites Ready	2 Indoor 5 Outdoor	N/A ³	2 Indoor 6 Outdoor
Community-Based Organization (CBO) Partnerships in Place	3 Partnerships	N/A ⁴	0 Partnerships

¹ Cumulative progress from 2018 through 2020

² Locations were identified on a monthly basis

³ CRC planning for 2021 was conducted in coordination with local agencies and tribes

⁴ Systemwide 2021 target exceeded

Note: Additional wildfire safety work is being planned for 2022 and will be available in the next progress update. All work plans are subject to change due to weather, access or other schedule constraints.

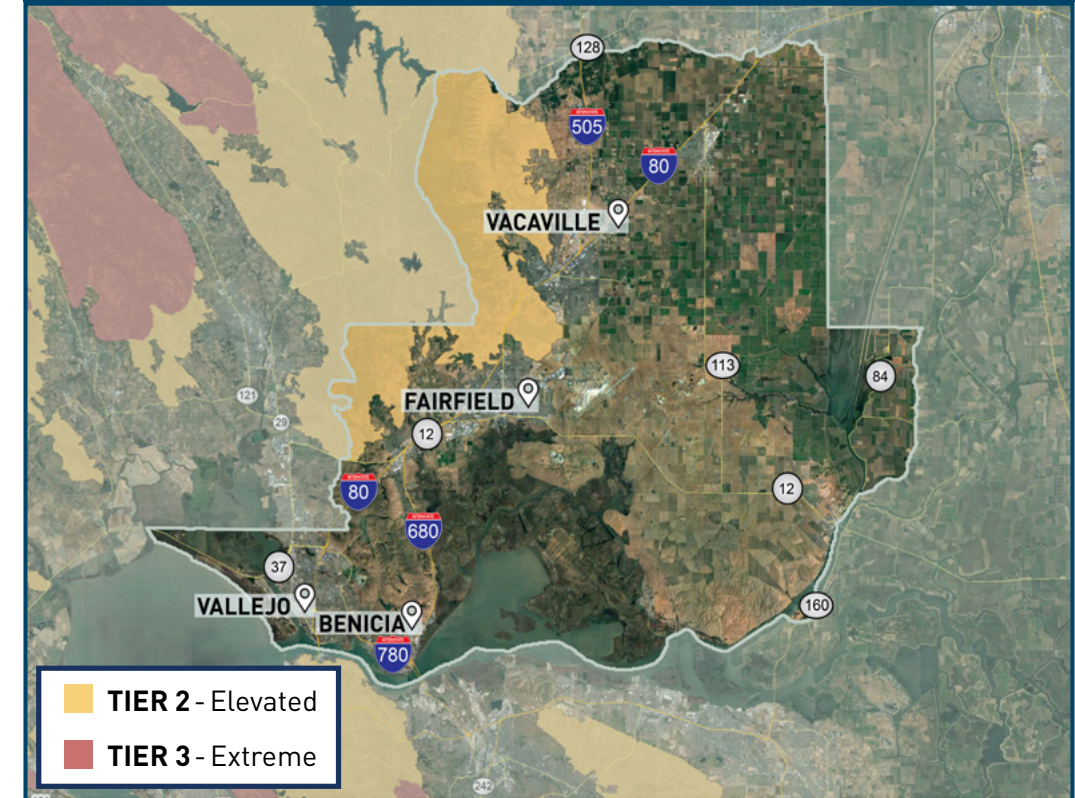


Click the clipboard icon
for key initiative descriptions

PG&E is prioritizing its wildfire safety work by:

- ✓ Locations with the highest risk of wildfire
- ✓ Locations that will make our system safer and lessen PSPS impacts

174,792 total customers served in Solano County
1% located in high fire-threat areas



For more information about our wildfire safety work, visit:

pge.com/wildfiresafety



WILDFIRE SAFETY IMPROVEMENTS PROGRESS SONOMA COUNTY

[CLICK HERE TO
RETURN TO MAIN PAGE](#)

Below is an overview of our progress on key wildfire safety improvement work as of December 31, 2021.

	COMPLETE THROUGH 2020 ¹	2021 TARGET	2021 COMPLETE
Enhanced Vegetation Management Complete	308.6 Line Miles	29.7 Line Miles	26.5 Line Miles
System Hardening Complete	63.1 Line Miles	11.7 Line Miles	11.7 Line Miles
Transmission and Distribution Sectionalizing Devices Installed	91 Devices	38 Devices	35 Devices
Weather Stations Installed	58 Stations	N/A ²	28 Stations
High Definition Cameras Installed	11 Cameras	N/A ²	13 Cameras
Community Resource Center (CRC) Sites Ready	3 Indoor 10 Outdoor	N/A ³	4 Indoor 12 Outdoor
Community-Based Organization (CBO) Partnerships in Place	5 Partnerships	N/A ⁴	1 Partnership

¹ Cumulative progress from 2018 through 2020

² Locations were identified on a monthly basis

³ CRC planning for 2021 was conducted in coordination with local agencies and tribes

⁴ Systemwide 2021 target exceeded

Note: Additional wildfire safety work is being planned for 2022 and will be available in the next progress update. All work plans are subject to change due to weather, access or other schedule constraints.

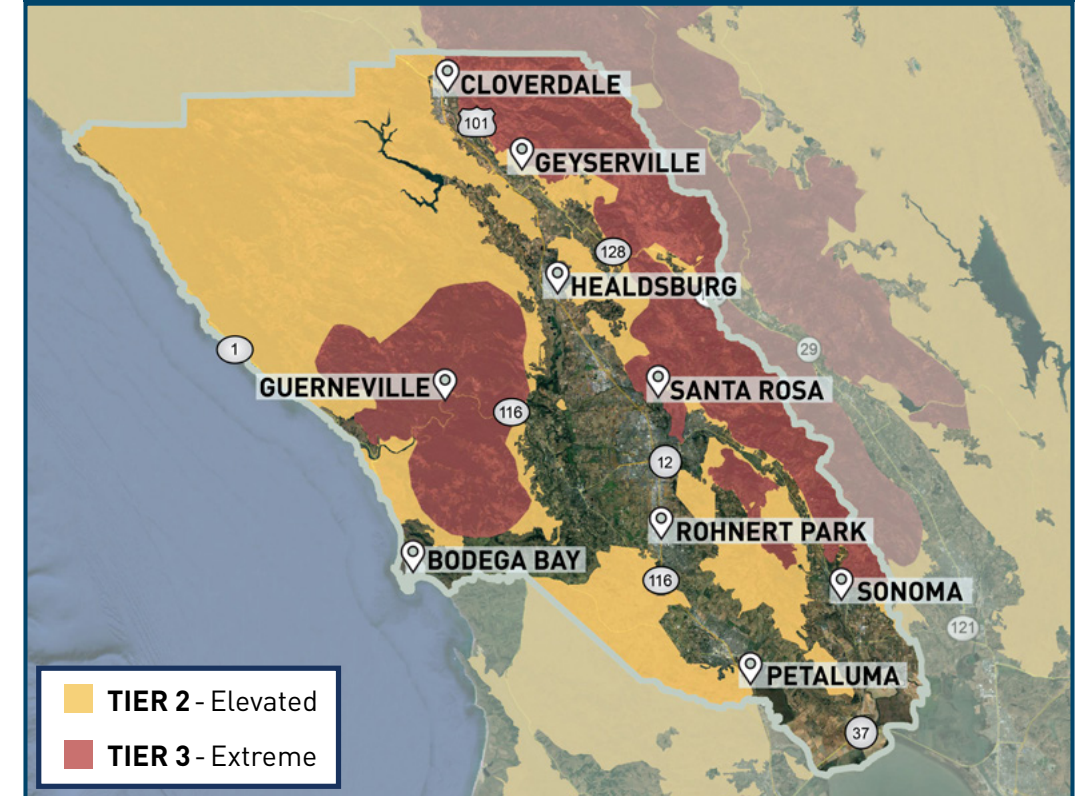


Click the clipboard icon
for key initiative descriptions

PG&E is prioritizing its wildfire safety work by:

- ✓ Locations with the highest risk of wildfire
- ✓ Locations that will make our system safer and lessen PSPS impacts

223,118 total customers served in Sonoma County
13% located in high fire-threat areas



For more information about our wildfire safety work, visit:

pge.com/wildfiresafety



WILDFIRE SAFETY IMPROVEMENTS PROGRESS STANISLAUS COUNTY

[CLICK HERE TO
RETURN TO MAIN PAGE](#)

Below is an overview of our progress on key wildfire safety improvement work as of December 31, 2021.

	COMPLETE THROUGH 2020 ¹	2021 TARGET	2021 COMPLETE
Enhanced Vegetation Management Complete	0.1 Line Miles	0 Line Miles	0 Line Miles
System Hardening Complete	0 Line Miles	0 Line Miles	0 Line Miles
Transmission and Distribution Sectionalizing Devices Installed	1 Device	0 Devices	0 Devices
Weather Stations Installed	1 Station	N/A ²	1 Station
High Definition Cameras Installed	1 Camera	N/A ²	0 Cameras
Community Resource Center (CRC) Sites Ready	0 Indoor 3 Outdoor	N/A ³	0 Indoor 4 Outdoor
Community-Based Organization (CBO) Partnerships in Place	1 Partnership	N/A ⁴	0 Partnerships

¹ Cumulative progress from 2018 through 2020

² Locations were identified on a monthly basis

³ CRC planning for 2021 was conducted in coordination with local agencies and tribes

⁴ Systemwide 2021 target exceeded

Note: Additional wildfire safety work is being planned for 2022 and will be available in the next progress update. All work plans are subject to change due to weather, access or other schedule constraints.

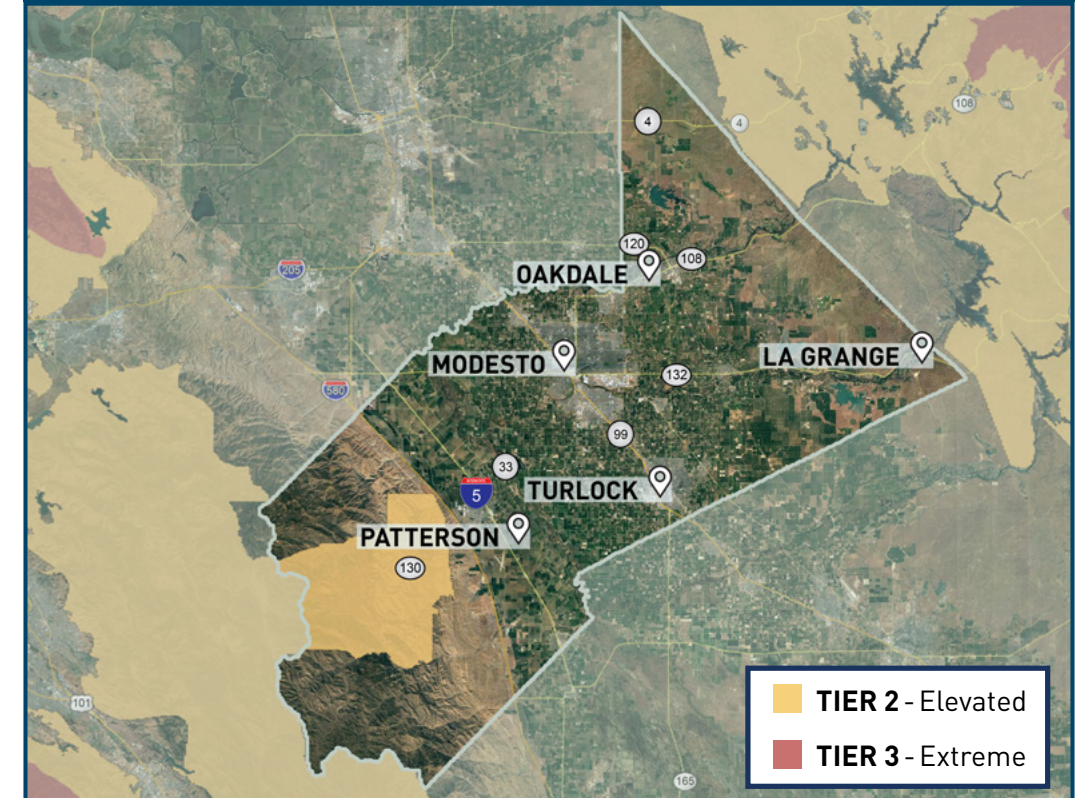


Click the clipboard icon
for key initiative descriptions

PG&E is prioritizing its wildfire safety work by:

- ✓ Locations with the highest risk of wildfire
- ✓ Locations that will make our system safer and lessen PSPS impacts

26,862 total customers served in Stanislaus County
2% located in high fire-threat areas



For more information about our wildfire safety work, visit:

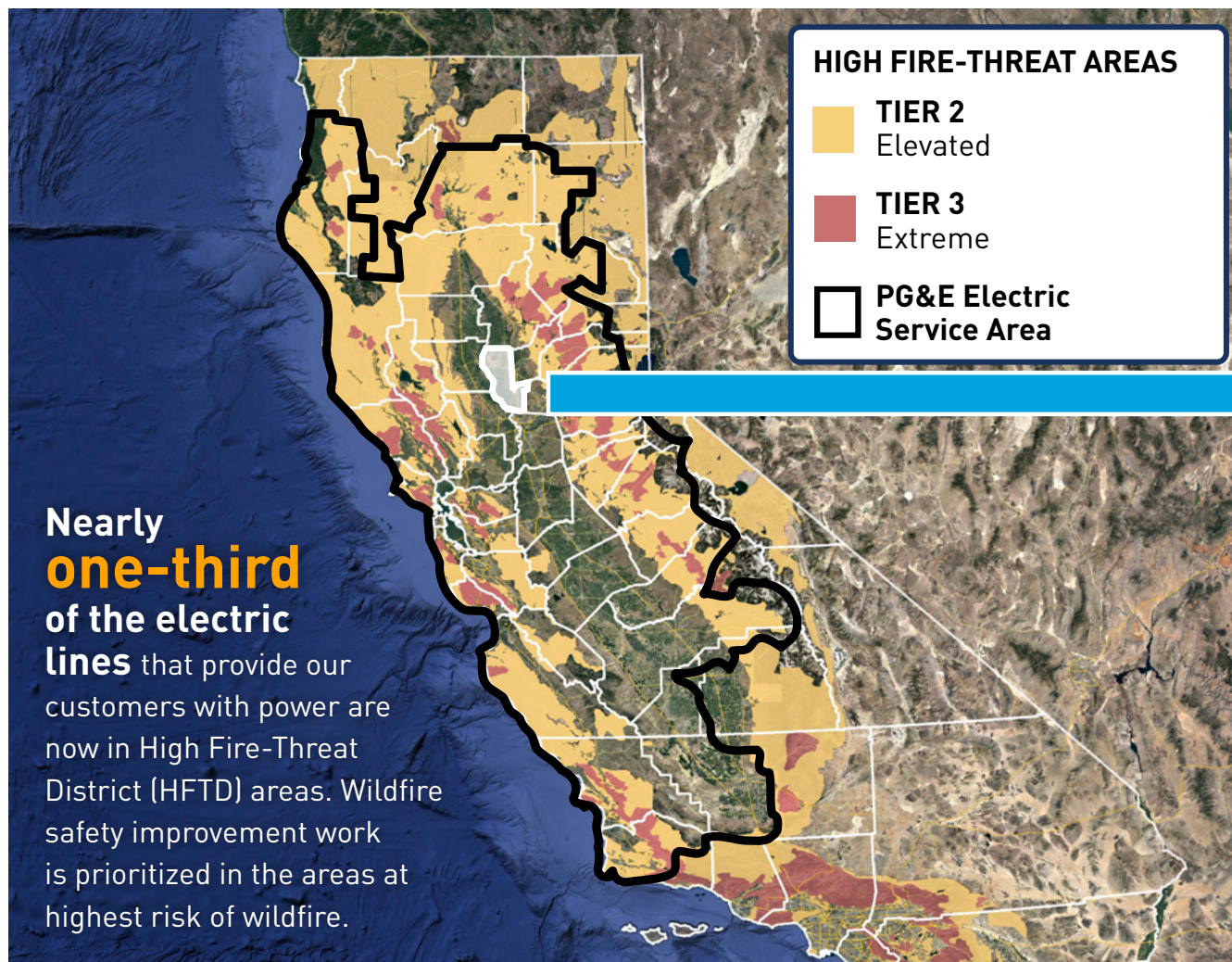
pge.com/wildfiresafety



WILDFIRE SAFETY IMPROVEMENTS PROGRESS SUTTER COUNTY

[CLICK HERE TO
RETURN TO MAIN PAGE](#)

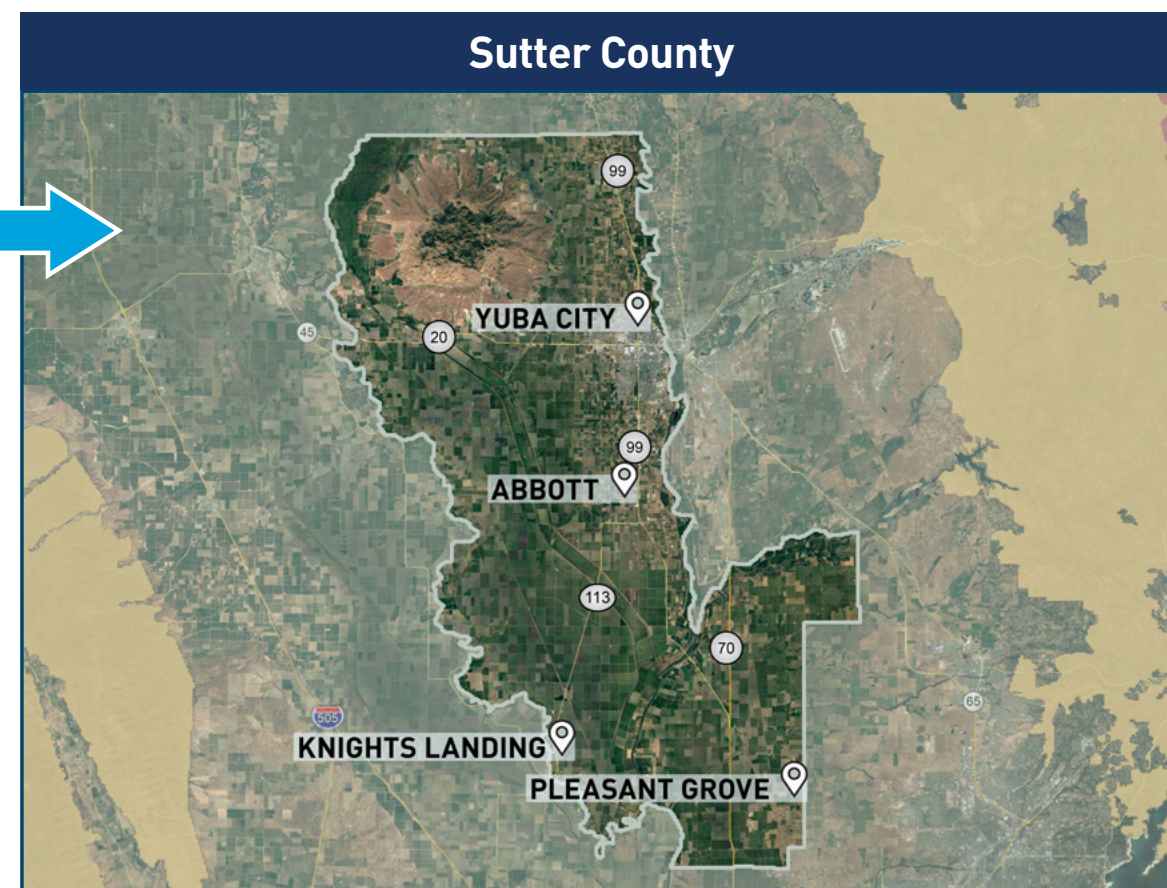
There are no high fire-threat areas in this county. For that reason, no wildfire safety work was conducted in 2021.



Source: California Public Utilities Commission (CPUC); ia.cpuc.ca.gov/FireMap

PG&E is prioritizing its wildfire safety work by:

- ✓ Locations with the highest risk of wildfire
- ✓ Locations that will make our system safer and lessen PSPS impacts



For more information about our wildfire safety work, visit:

pge.com/wildfiresafety



WILDFIRE SAFETY IMPROVEMENTS PROGRESS TEHAMA COUNTY

[CLICK HERE TO
RETURN TO MAIN PAGE](#)

Below is an overview of our progress on key wildfire safety improvement work as of December 31, 2021.

	COMPLETE THROUGH 2020 ¹	2021 TARGET	2021 COMPLETE
Enhanced Vegetation Management Complete	249 Line Miles	26.7 Line Miles	99.8 Line Miles
System Hardening Complete	1.7 Line Miles	0.4 Line Miles	0.4 Line Miles
Transmission and Distribution Sectionalizing Devices Installed	20 Devices	0 Devices	1 Device
Weather Stations Installed	19 Stations	N/A ²	14 Stations
High Definition Cameras Installed	12 Cameras	N/A ²	0 Cameras
Community Resource Center (CRC) Sites Ready	2 Indoor 5 Outdoor	N/A ³	2 Indoor 7 Outdoor
Community-Based Organization (CBO) Partnerships in Place	2 Partnerships	N/A ⁴	0 Partnerships

¹ Cumulative progress from 2018 through 2020

² Locations were identified on a monthly basis

³ CRC planning for 2021 was conducted in coordination with local agencies and tribes

⁴ Systemwide 2021 target exceeded

Note: Additional wildfire safety work is being planned for 2022 and will be available in the next progress update. All work plans are subject to change due to weather, access or other schedule constraints.

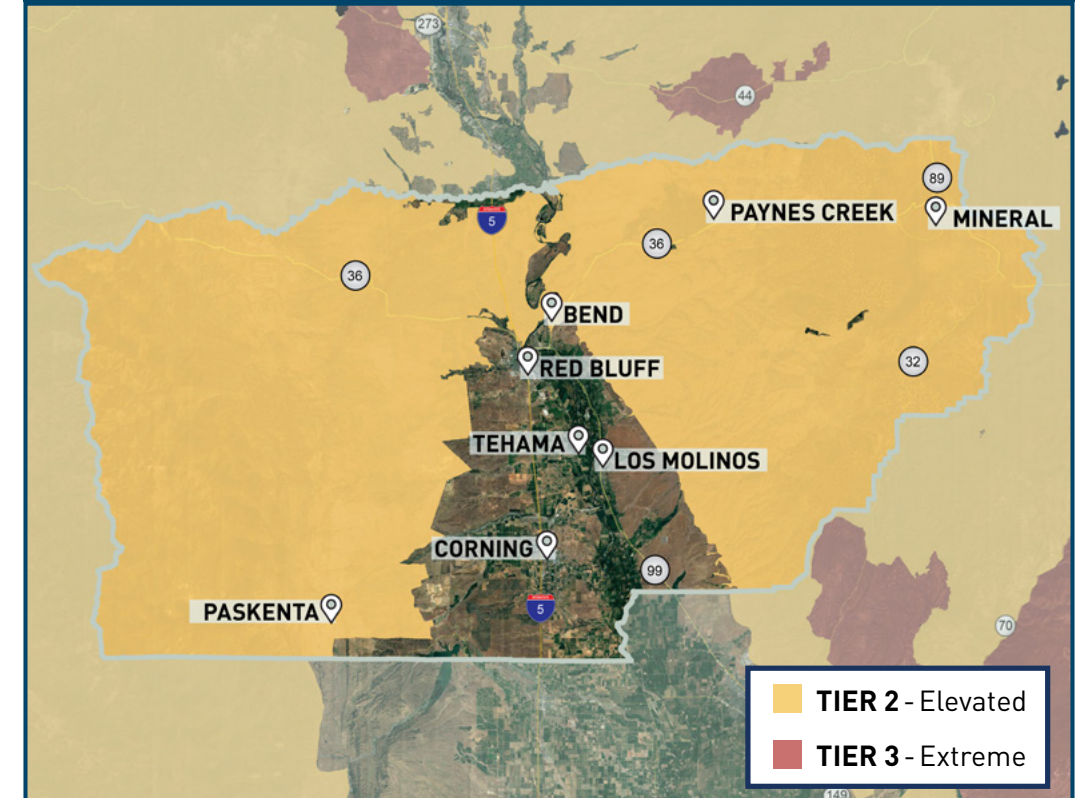


Click the clipboard icon
for key initiative descriptions

PG&E is prioritizing its wildfire safety work by:

- ✓ Locations with the highest risk of wildfire
- ✓ Locations that will make our system safer and lessen PSPS impacts

32,207 total customers served in Tehama County
23% located in high fire-threat areas



For more information about our wildfire safety work, visit:

pge.com/wildfiresafety



WILDFIRE SAFETY IMPROVEMENTS PROGRESS TRINITY COUNTY

[CLICK HERE TO
RETURN TO MAIN PAGE](#)

Below is an overview of our progress on key wildfire safety improvement work as of December 31, 2021.

	COMPLETE THROUGH 2020 ¹	2021 TARGET	2021 COMPLETE
Enhanced Vegetation Management Complete	0.2 Line Miles	0.1 Line Miles	0 Line Miles
System Hardening Complete	1.3 Line Miles	0.1 Line Miles	0.1 Line Miles
Transmission and Distribution Sectionalizing Devices Installed	2 Devices	0 Devices	0 Devices
Weather Stations Installed	4 Stations	N/A ²	3 Stations
High Definition Cameras Installed	4 Cameras	N/A ²	0 Cameras
Community Resource Center (CRC) Sites Ready	1 Indoor 3 Outdoor	N/A ³	1 Indoor 3 Outdoor
Community-Based Organization (CBO) Partnerships in Place	0 Partnerships	N/A ⁴	0 Partnerships

¹ Cumulative progress from 2018 through 2020

² Locations were identified on a monthly basis

³ CRC planning for 2021 was conducted in coordination with local agencies and tribes

⁴ Systemwide 2021 target exceeded

Note: Additional wildfire safety work is being planned for 2022 and will be available in the next progress update. All work plans are subject to change due to weather, access or other schedule constraints.

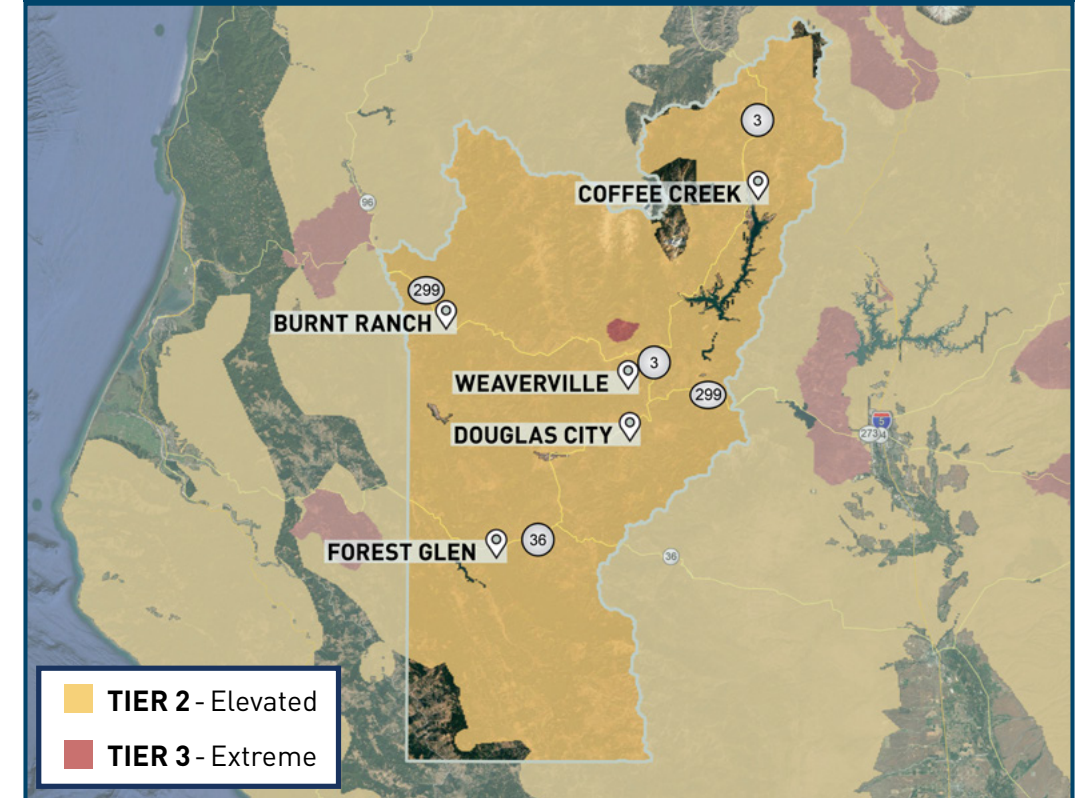


Click the clipboard icon
for key initiative descriptions

PG&E is prioritizing its wildfire safety work by:

- ✓ Locations with the highest risk of wildfire
- ✓ Locations that will make our system safer and lessen PSPS impacts

1,358 total customers served in Trinity County
97% located in high fire-threat areas



For more information about our wildfire safety work, visit:

pge.com/wildfiresafety



WILDFIRE SAFETY IMPROVEMENTS PROGRESS TULARE COUNTY

[CLICK HERE TO
RETURN TO MAIN PAGE](#)

Below is an overview of our progress on key wildfire safety improvement work as of December 31, 2021.

	COMPLETE THROUGH 2020 ¹	2021 TARGET	2021 COMPLETE
Enhanced Vegetation Management Complete	0 Line Miles	0 Line Miles	0 Line Miles
System Hardening Complete	0 Line Miles	0.1 Line Miles	0.1 Line Miles
Transmission and Distribution Sectionalizing Devices Installed	5 Devices	2 Devices	2 Devices
Weather Stations Installed	9 Stations	N/A ²	1 Station
High Definition Cameras Installed	0 Cameras	N/A ²	2 Cameras
Community Resource Center (CRC) Sites Ready	0 Indoor 3 Outdoor	N/A ³	1 Indoor 3 Outdoor
Community-Based Organization (CBO) Partnerships in Place	2 Partnerships	N/A ⁴	0 Partnerships

¹ Cumulative progress from 2018 through 2020

² Locations were identified on a monthly basis

³ CRC planning for 2021 was conducted in coordination with local agencies and tribes

⁴ Systemwide 2021 target exceeded

Note: Additional wildfire safety work is being planned for 2022 and will be available in the next progress update. All work plans are subject to change due to weather, access or other schedule constraints.

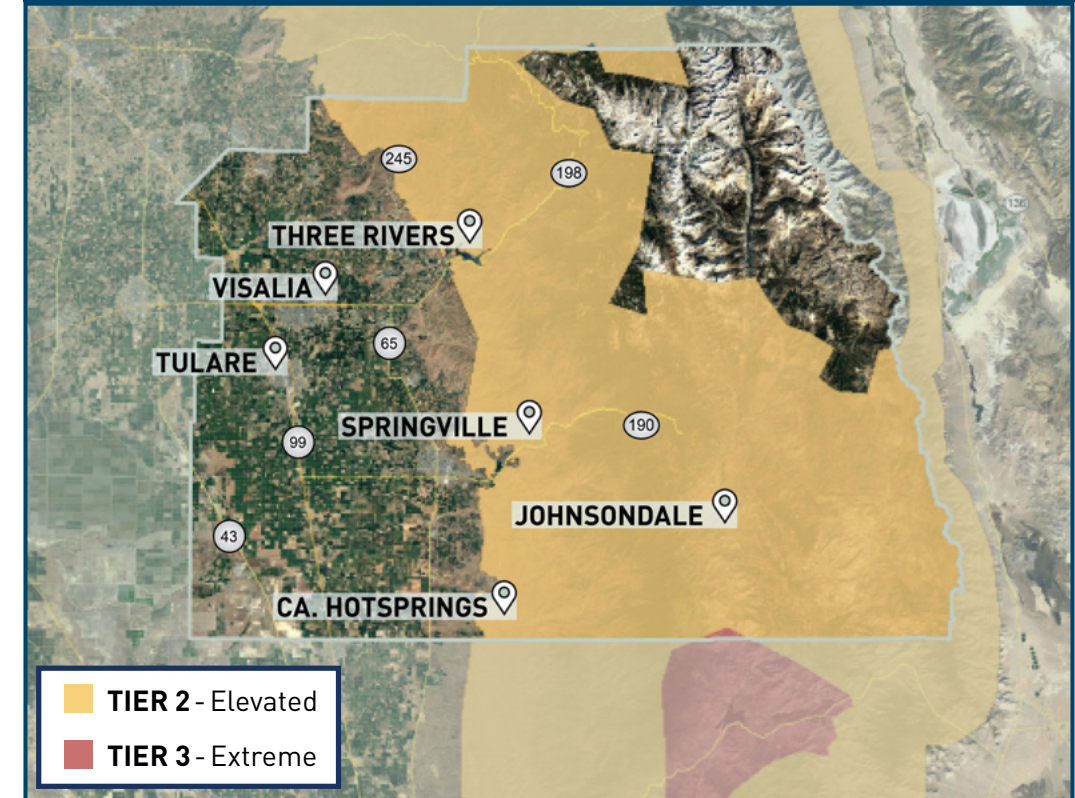


Click the clipboard icon
for key initiative descriptions

PG&E is prioritizing its wildfire safety work by:

- ✓ Locations with the highest risk of wildfire
- ✓ Locations that will make our system safer and lessen PSPS impacts

21,573 total customers served in Tulare County
3% located in high fire-threat areas



For more information about our wildfire safety work, visit:

pge.com/wildfiresafety



WILDFIRE SAFETY IMPROVEMENTS PROGRESS TUOLUMNE COUNTY

[CLICK HERE TO
RETURN TO MAIN PAGE](#)

Below is an overview of our progress on key wildfire safety improvement work as of December 31, 2021.

	COMPLETE THROUGH 2020 ¹	2021 TARGET	2021 COMPLETE
Enhanced Vegetation Management Complete	337.5 Line Miles	0 Line Miles	0.1 Line Miles
System Hardening Complete	14.7 Line Miles	18.3 Line Miles	18.3 Line Miles
Transmission and Distribution Sectionalizing Devices Installed	0 Devices	3 Devices	12 Devices
Weather Stations Installed	25 Stations	N/A ²	6 Stations
High Definition Cameras Installed	21 Cameras	N/A ²	1 Camera
Community Resource Center (CRC) Sites Ready	2 Indoor 6 Outdoor	N/A ³	2 Indoor 6 Outdoor
Community-Based Organization (CBO) Partnerships in Place	1 Partnership	N/A ⁴	0 Partnerships

¹ Cumulative progress from 2018 through 2020

² Locations were identified on a monthly basis

³ CRC planning for 2021 was conducted in coordination with local agencies and tribes

⁴ Systemwide 2021 target exceeded

Note: Additional wildfire safety work is being planned for 2022 and will be available in the next progress update. All work plans are subject to change due to weather, access or other schedule constraints.

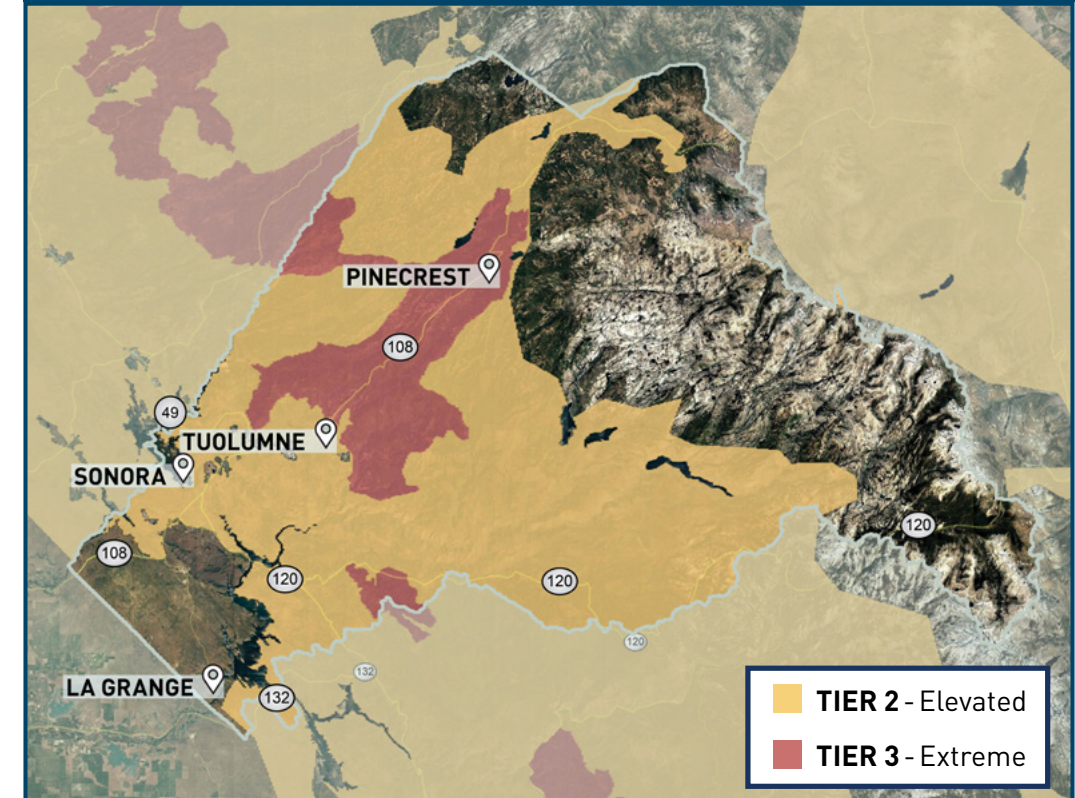


Click the clipboard icon
for key initiative descriptions

PG&E is prioritizing its wildfire safety work by:

- ✓ Locations with the highest risk of wildfire
- ✓ Locations that will make our system safer and lessen PSPS impacts

33,869 total customers served in Tuolumne County
83% located in high fire-threat areas



For more information about our wildfire safety work, visit:

pge.com/wildfiresafety



WILDFIRE SAFETY IMPROVEMENTS PROGRESS YOLO COUNTY

[CLICK HERE TO
RETURN TO MAIN PAGE](#)

Below is an overview of our progress on key wildfire safety improvement work as of December 31, 2021.

	COMPLETE THROUGH 2020 ¹	2021 TARGET	2021 COMPLETE
Enhanced Vegetation Management Complete	9.1 Line Miles	0.1 Line Miles	0 Line Miles
System Hardening Complete	0 Line Miles	0 Line Miles	0 Line Miles
Transmission and Distribution Sectionalizing Devices Installed	13 Devices	0 Devices	0 Devices
Weather Stations Installed	7 Stations	N/A ²	2 Stations
High Definition Cameras Installed	0 Cameras	N/A ²	4 Cameras
Community Resource Center (CRC) Sites Ready	3 Indoor 9 Outdoor	N/A ³	3 Indoor 8 Outdoor
Community-Based Organization (CBO) Partnerships in Place	2 Partnerships	N/A ⁴	0 Partnerships

¹ Cumulative progress from 2018 through 2020

² Locations were identified on a monthly basis

³ CRC planning for 2021 was conducted in coordination with local agencies and tribes

⁴ Systemwide 2021 target exceeded

Note: Additional wildfire safety work is being planned for 2022 and will be available in the next progress update. All work plans are subject to change due to weather, access or other schedule constraints.

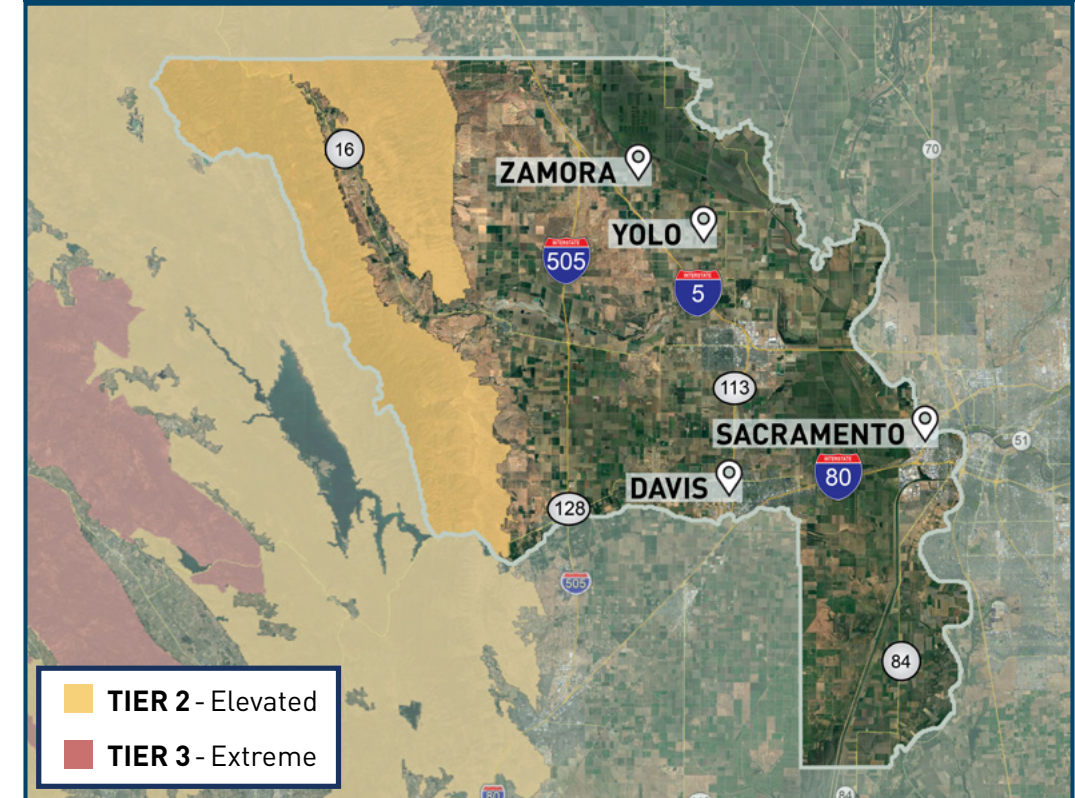


Click the clipboard icon
for key initiative descriptions

PG&E is prioritizing its wildfire safety work by:

- ✓ Locations with the highest risk of wildfire
- ✓ Locations that will make our system safer and lessen PSPS impacts

92,564 total customers served in Yolo County
<1% located in high fire-threat areas



For more information about our wildfire safety work, visit:

pge.com/wildfiresafety



WILDFIRE SAFETY IMPROVEMENTS PROGRESS YUBA COUNTY

[CLICK HERE TO
RETURN TO MAIN PAGE](#)

Below is an overview of our progress on key wildfire safety improvement work as of December 31, 2021.

	COMPLETE THROUGH 2020 ¹	2021 TARGET	2021 COMPLETE
Enhanced Vegetation Management Complete	81 Line Miles	81.9 Line Miles	117.7 Line Miles
System Hardening Complete	0 Line Miles	0.6 Line Miles	0.6 Line Miles
Transmission and Distribution Sectionalizing Devices Installed	7 Devices	0 Devices	0 Devices
Weather Stations Installed	12 Stations	N/A ²	4 Stations
High Definition Cameras Installed	8 Cameras	N/A ²	0 Cameras
Community Resource Center (CRC) Sites Ready	2 Indoor 6 Outdoor	N/A ³	2 Indoor 5 Outdoor
Community-Based Organization (CBO) Partnerships in Place	1 Partnership	N/A ⁴	1 Partnership

¹ Cumulative progress from 2018 through 2020

² Locations were identified on a monthly basis

³ CRC planning for 2021 was conducted in coordination with local agencies and tribes

⁴ Systemwide 2021 target exceeded

Note: Additional wildfire safety work is being planned for 2022 and will be available in the next progress update. All work plans are subject to change due to weather, access or other schedule constraints.

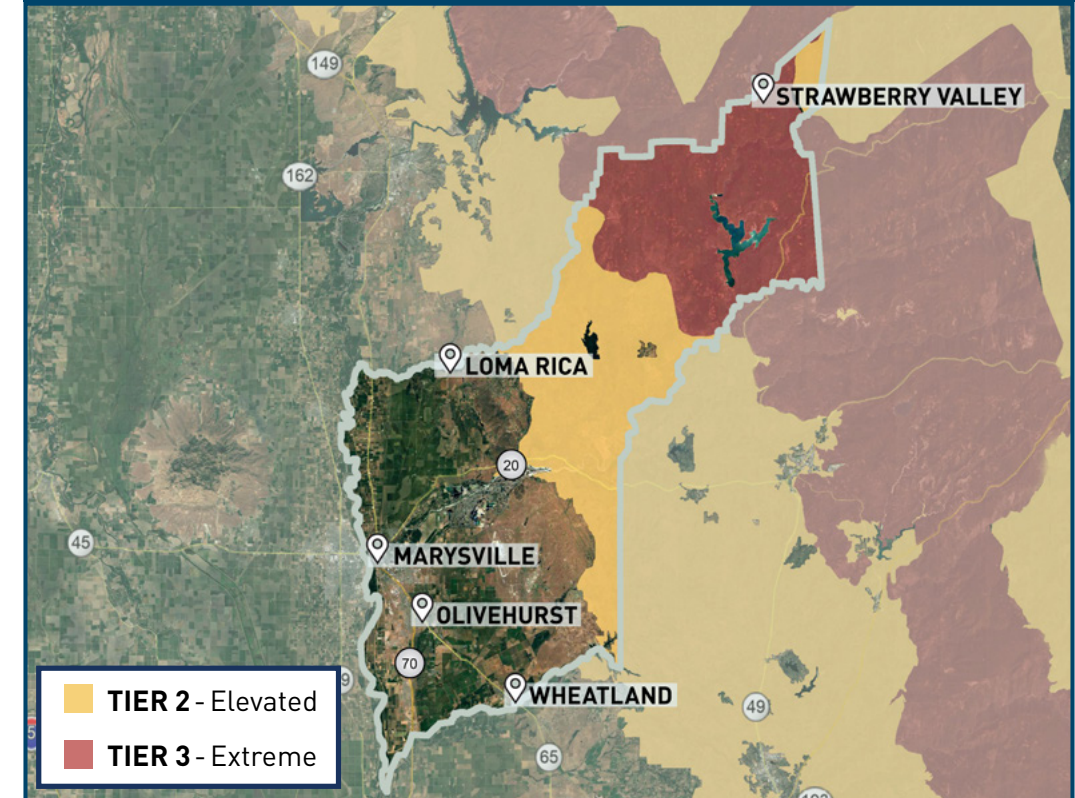


Click the clipboard icon
for key initiative descriptions

PG&E is prioritizing its wildfire safety work by:

- ✓ Locations with the highest risk of wildfire
- ✓ Locations that will make our system safer and lessen PSPS impacts

33,033 total customers served in Yuba County
15% located in high fire-threat areas



For more information about our wildfire safety work, visit:

pge.com/wildfiresafety



COMMUNITY WILDFIRE SAFETY PROGRAM KEY INITIATIVE DESCRIPTIONS

[CLICK HERE TO
RETURN TO MAIN PAGE](#)

Below is a systemwide overview of our key wildfire safety improvement efforts.

		COMPLETED IN 2021	PROGRESS TO DATE*
ENHANCED VEGETATION MANAGEMENT	Meeting and exceeding state vegetation standards to manage trees and other vegetation located near powerlines that could cause a wildfire or power outage	1,983 Line Miles	6,359 Line Miles
SYSTEM HARDENING	Conducting undergrounding and installing stronger poles and covered powerlines in and near high fire-threat areas to further reduce wildfire risks and better withstand severe weather	211 Line Miles	741 Line Miles
TRANSMISSION AND DISTRIBUTION SECTIONALIZING DEVICES	Installing sectionalizing devices to separate the electric grid into smaller sections to reduce wildfire risk and narrow the scope of PSPS outages	307 Devices	1,240 Devices
WEATHER STATIONS	Adding state-of-the-art weather tools to improve weather forecasting that will help better predict and target where and when PSPS outages are necessary	308 Stations	1,313 Stations
HIGH-DEFINITION CAMERAS	Allowing us to better pinpoint how to best prevent and respond to the risk of wildfires	153 Cameras	502 Cameras
COMMUNITY RESOURCE CENTERS	Identifying more locations to provide customers with resources to meet basic power needs and up-to-date information during a PSPS outage	113 Indoor	281 Outdoor
		211 Indoor	546 Outdoor
COMMUNITY-BASED ORGANIZATION PARTNERSHIPS	Providing resources and information to customers before, during and after PSPS outages, including portable batteries, hotel stays, food stipends and accessible transportation to those with medical or independent living needs	114 Partnerships	210 Partnerships

*Cumulative progress from 2018 through 2021

Data as of 12/31/2021

For more information about our wildfire safety work, visit:

pge.com/wildfiresafety