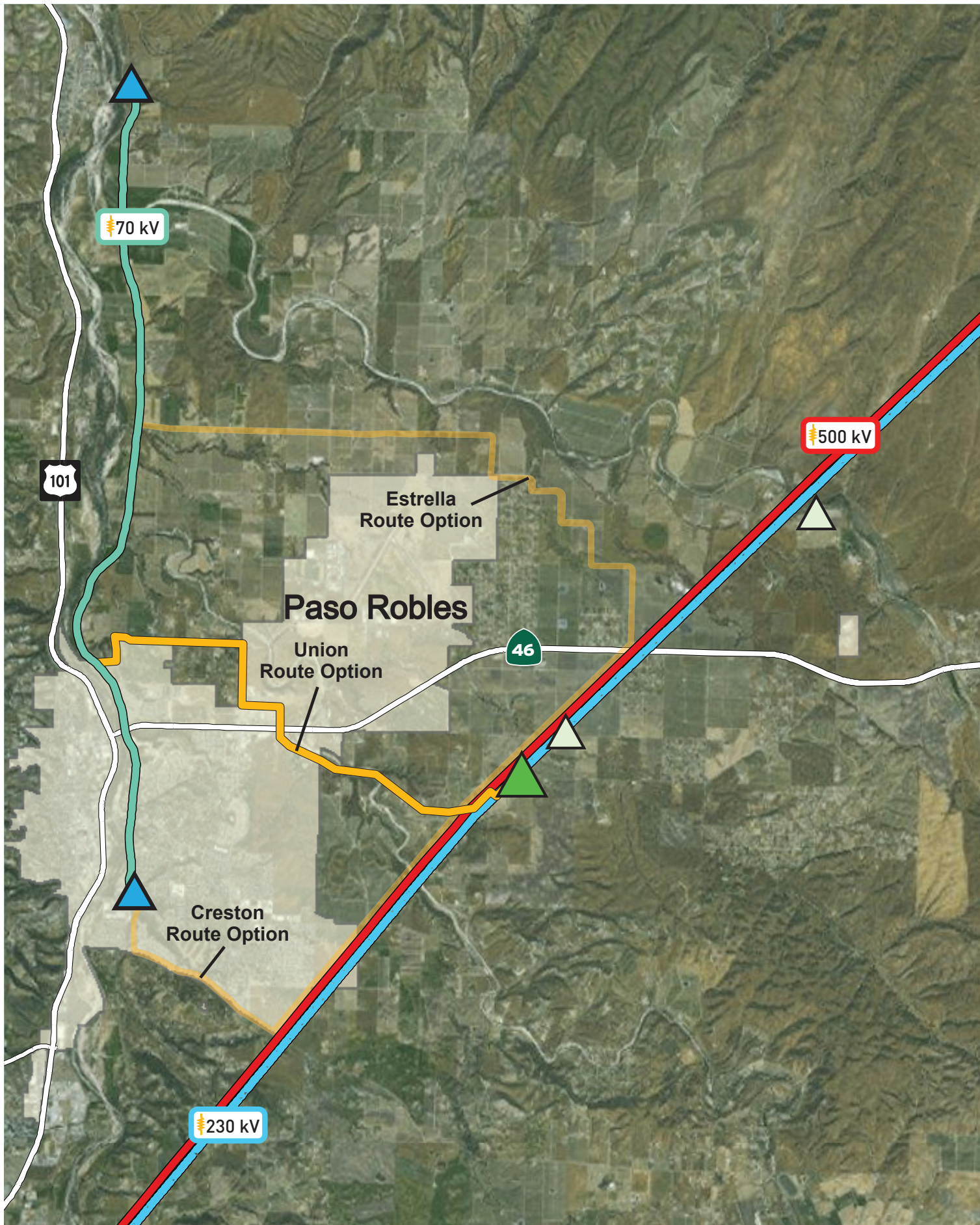


# Project Map



## Legend

- City Boundaries
- Existing PG&E Substation
- NEET West's Proposed Substation Site Option
- NEET West's Proposed Substation Site Alternatives
- PG&E's Proposed Route
- PG&E's Previous Route Options

## Existing Transmission Lines

- San Miguel-Paso Robles
- Morro Bay-Gates #2 and Templeton-Gates
- Diablo-Gates #1

