

**Project Features**

- FERC 803
- Project Boundary
- Canal
- Tunnel
- Penstock
- Feeder
- Spillway
- Sluice pipe
- 60 kV Transmission
- Project Road

**Rivermiles**

- Mile Marker
- 1/10 Mile

**Land Ownership**

**Public Land**

- Plumas National Forest
- Lassen National Forest
- Bureau Of Land Management
- State of California
- Dept. of Fish and Game
- Paradise Recreation and Park District

**Private Land**

- PG&E
- Sierra Pacific Industries
- Other Private Land

**Non-Project Features**

- Powerhouse
- Diversion Dam
- Road
- Transmission Line
- City / Town

**Study Sites - Transects**

- Jordan Hill Bridge Study Site
- Above Robley Point Bridge Study Site
- Reison Camp Study Site

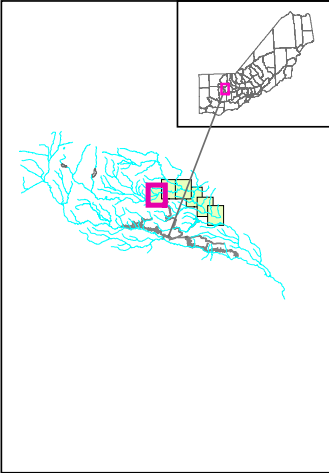
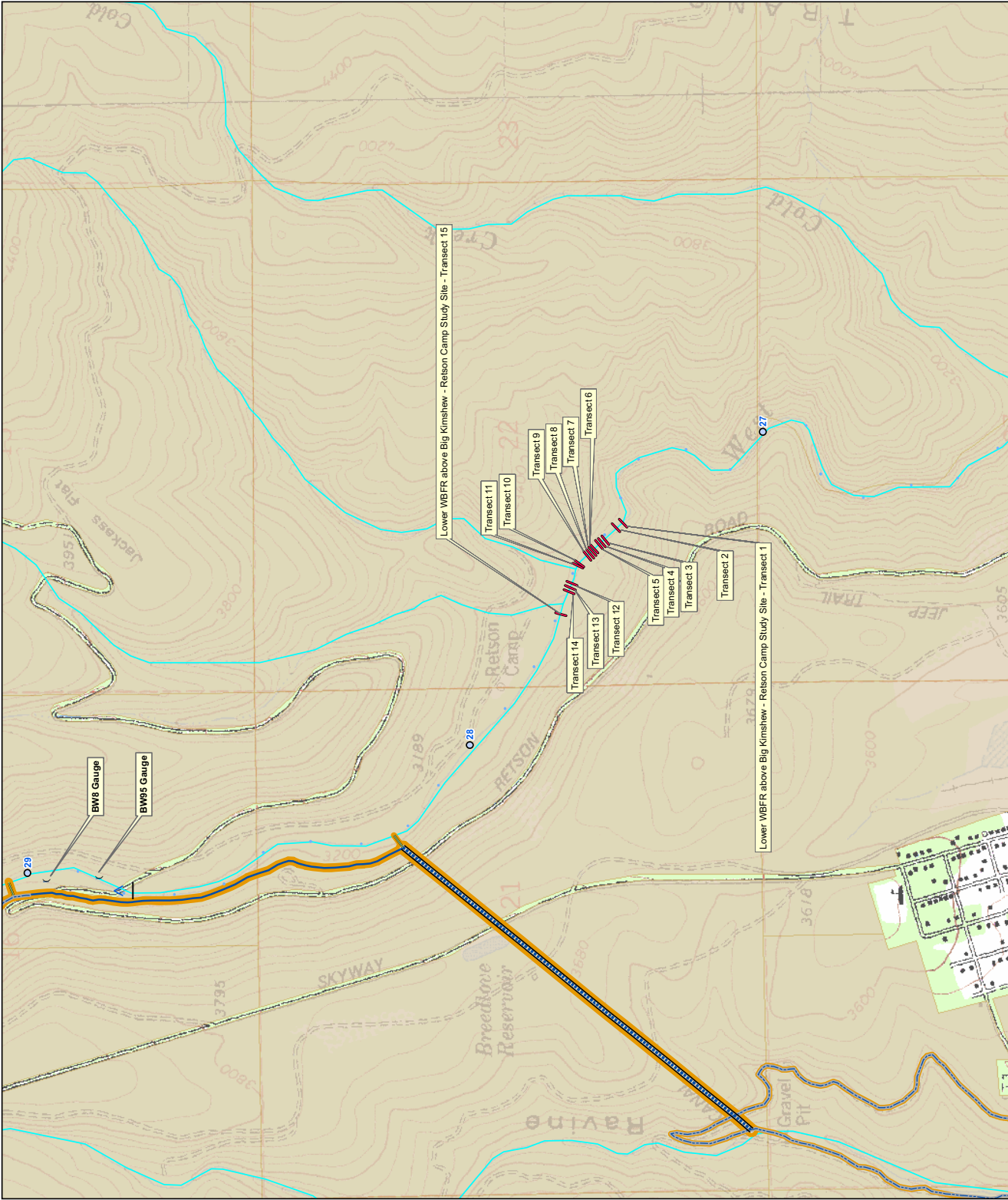
Scale 1:12,000. One inch represents 1000 feet

0 0.25 0.5 Miles

**DeSabra-Centerville Project**  
**FERC 803**

©2007, PACIFIC GAS AND ELECTRIC CO.

**Figure E6.3.2.8-4a**  
 Lower WBFR above Big Kimsheew  
 Study Site and Transect Locations  
 above Robley Point Bridge Study Site



<b>Project Features</b> FERC 803 Project Boundary Canal Tunnel Penstock Feeder Spillway Sluice pipe 60 KV Transmission Project Road Powerhouse Diversion Dam Gauges Dam <b>Non-Project Features</b> Powerhouse Diversion Dam Road Transmission Line City / Town	<b>Rivermiles</b> Mile Marker 1/10 Mile <b>Land Ownership</b> Public Land Plumas National Forest Lassen National Forest Bureau Of Land Management State of California Dept. of Fish and Game Paradise Recreation and Park District <b>Private Land</b> PG&E Sierra Pacific Industries Other Private Land	<b>Study Sites - Transects</b> Jordan Hill Bridge Study Site Above Robley Point Bridge Study Site Retson Camp Study Site
---	--	---

Scale 1:12,000. One inch represents 1,000 feet

0 0.25 0.5 Miles

**Desabla-Centerville Project**  
**FERC 803**

©2007, PACIFIC GAS AND ELECTRIC CO.

**Figure E6.3.2.8-4b**  
 Lower WBFR above Big Kimshew  
 Study Site and Transect Locations  
 Retson Camp Bridge Study Site