

Project Features

- FERC 803
- Project Boundary
- Canal
- Tunnel
- Penstock
- Feeder
- Spillway
- Sluice pipe
- 60 kV Transmission
- Project Road

Non-Project Features

- Powerhouse
- Diversion Dam
- Gauges
- Dam
- Powerhouse
- Diversion Dam
- Gauges
- Dam

Habitat Mapping Units

- Reison Camp Habitat Mapping Section
- Above Big Kimshew Habitat Mapping Section
- Below Big Kimshew Habitat Mapping Section
- Jordan Hill Habitat Mapping Section

Rivermiles

- Mile Marker
- 1/10 Mile

Land Ownership

Public Land

- Plumas National Forest
- Lassen National Forest
- Bureau Of Land Management
- State of California
- Dept. of Fish and Game
- Paradise Recreation and Park District

Private Land

- PG&E
- Sierra Pacific Industries
- Other Private Land

Other Features

- Road
- Transmission Line
- City/Town

Scale

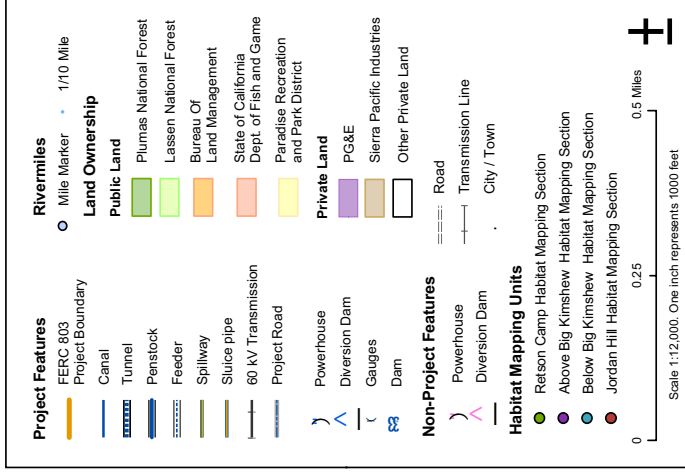
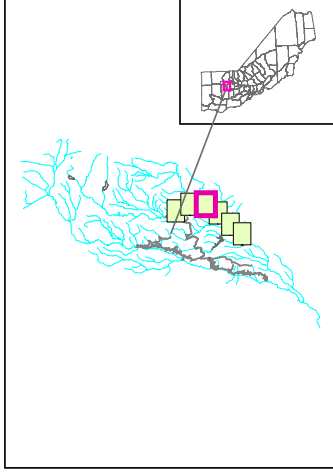
0 0.25 0.5 Miles

Scale 1:12,000. One inch represents 1000 feet

**DeSabra-Centerville Project
FERC 803**

©2007, PACIFIC GAS AND ELECTRIC CO.

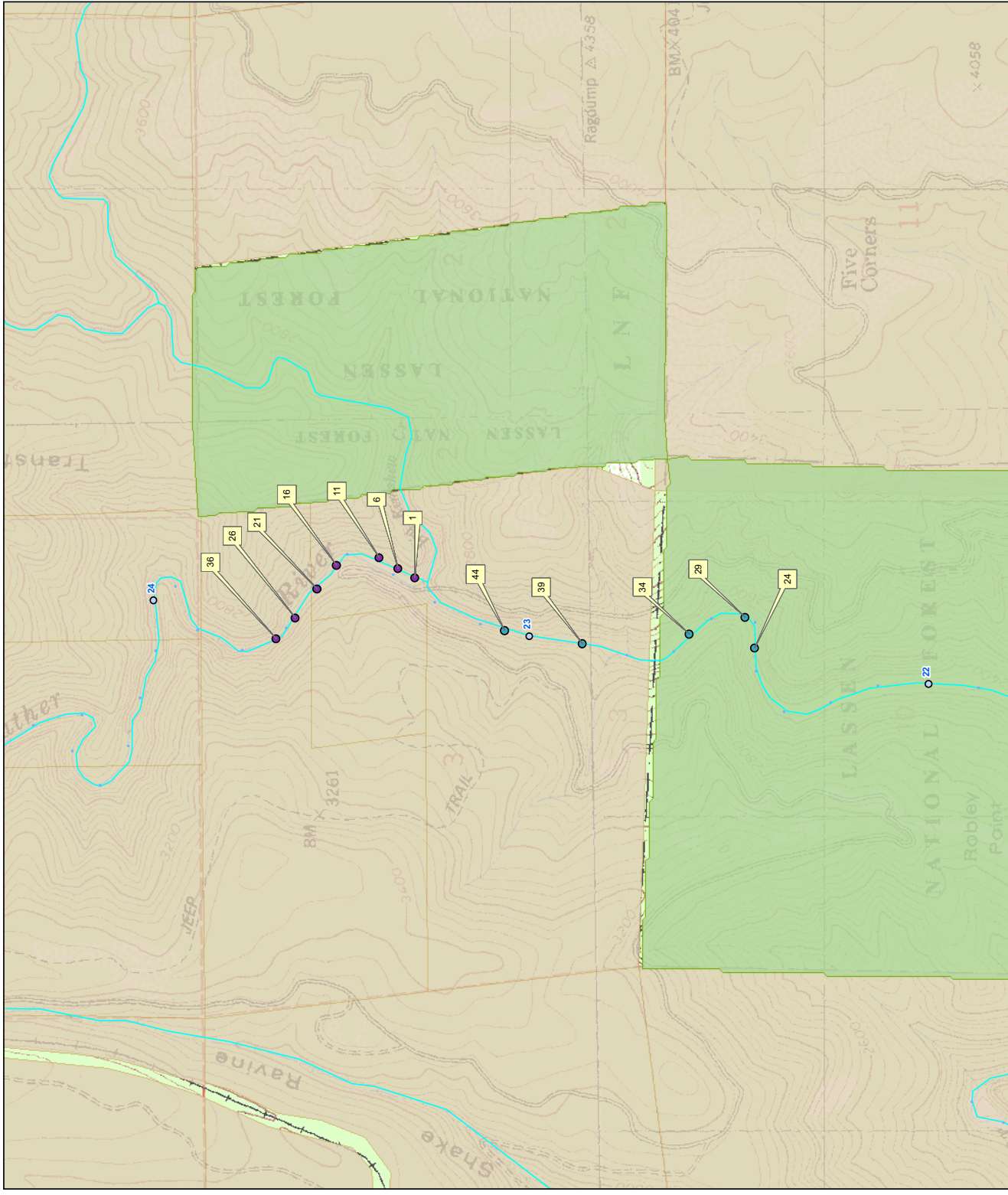
Figure E6.3.2.8-2a
Lower WBFR below Big Kimshew
Habitat Mapping Units
Jordan Hill

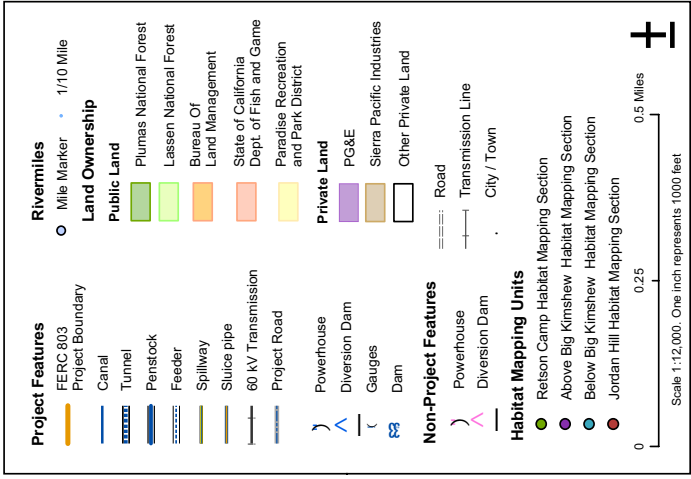
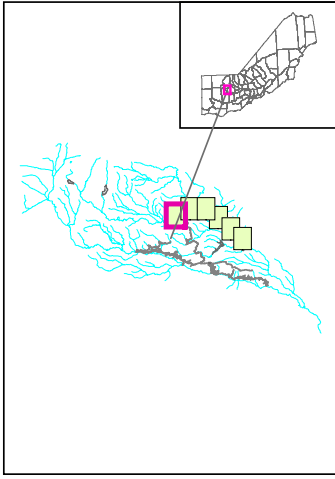


DeSabra-Centerville Project
FERC 803

©2007, PACIFIC GAS AND ELECTRIC CO.

Figure E6.3.2.8-2b
 Lower WBFR below Big Kimshew
 Habitat Mapping Units
 Robley Point Bridge





DeSabra-Centerville Project
FERC 803

©2007, PACIFIC GAS AND ELECTRIC CO.

Figure E6.3.2.8-2c
 Lower WBFR below Big Kimsheiw
 Habitat Mapping Units
 Retson Camp

