

Adopted Visual Quality Objective Zones

USFS VQOZ

- Retention (as mapped)
- Partial Retention (as mapped)
- Modification (all other areas)

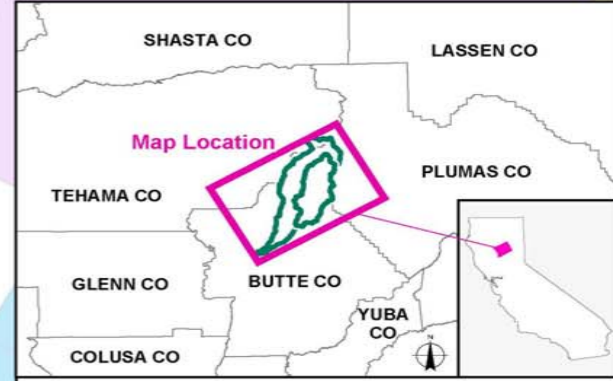
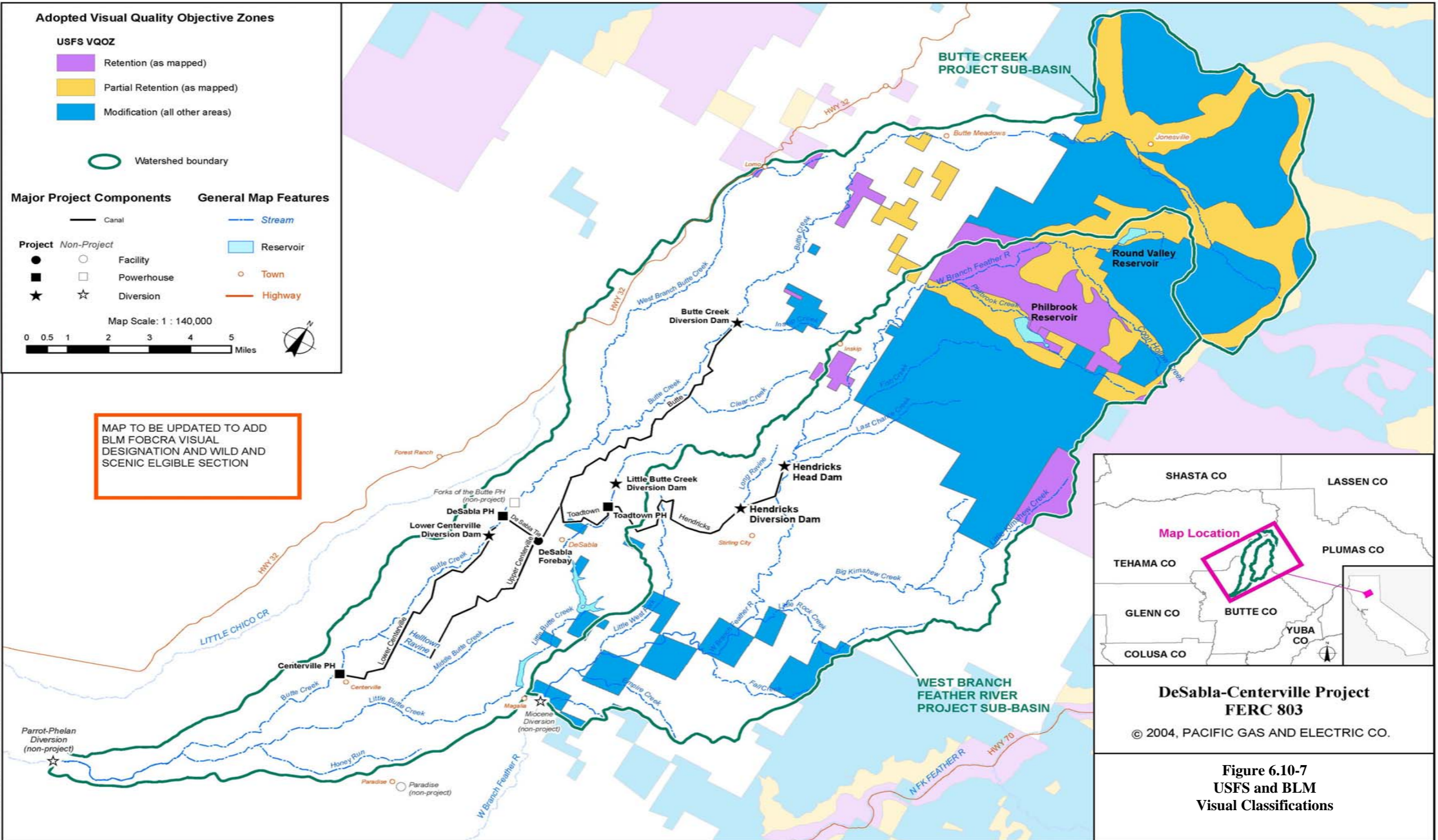
Watershed boundary

Major Project Components

General Map Features

- | | | |
|-----------------------------|---------------------------------|--------------------|
| <p>— Canal</p> | | <p>— Stream</p> |
| <p>● Project Facility</p> | <p>○ Non-Project Facility</p> | <p>■ Reservoir</p> |
| <p>■ Project Powerhouse</p> | <p>□ Non-Project Powerhouse</p> | <p>○ Town</p> |
| <p>★ Project Diversion</p> | <p>☆ Non-Project Diversion</p> | <p>— Highway</p> |
- Map Scale: 1 : 140,000
- 0 0.5 1 2 3 4 5 Miles
-

MAP TO BE UPDATED TO ADD BLM FOBCRA VISUAL DESIGNATION AND WILD AND SCENIC ELIGIBLE SECTION



**DeSabra-Centerville Project
FERC 803**
© 2004, PACIFIC GAS AND ELECTRIC CO.

**Figure 6.10-7
USFS and BLM
Visual Classifications**

file: G:\giedata\utility\hydro\projects\desabra_centerville\mapseries\temp_voozviewer.mxd by: E:\PO at 08/15/2004 11:08AM DRAFT