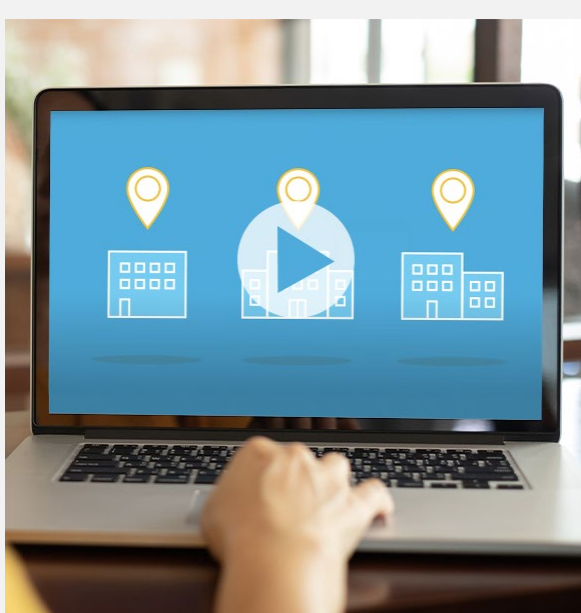



**BUSINESS RESILIENCY**
**Energy Decision Maker, What matters most for your business?**

Pick where you want to spend **your** energy the most to grow your business and access key energy management offers to support your efforts.

[Increasing bottom line](#)
[Building resilience](#)
[Increasing sustainability](#)

**RATE OPTIONS**
**Choose the best electric rate plan for your business**

Compare cost savings based on your business' energy use with **Rate Simulator**. Select rate options for each service location, in one spot, with **Batch Rate**. Learn about these two newly launched rate-comparison features with this short video.

[Watch now »](#)
**ELECTRIFICATION**
**Electrify your fleet and drive change**

Review the entire process with these resources and make an informed decision.

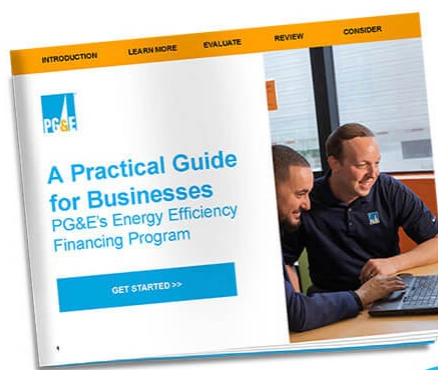
[Build your plan »](#)

**POWER RELIABILITY**
**Securing energy resilience within your community**

Through technical support and cost offsets, **Community Microgrid Enablement Program (CMEP)** can assist your community in taking its resilience ideas from concept to reality.

[Learn more about CMEP »](#)
**NEW RESOURCE**
**A practical guide for energy efficiency financing**

Energy efficiency upgrades are streamlined with **0% interest** financing. There are no out-of-pocket costs. Pay off your loan on your energy bill and invest money back to your business.

[Download your copy »](#)

[Download your free guide](#)

**Business Resources**

**Review renewable energy backup power options and incentives**

Contact your PG&E Account Manager to review technologies like solar and fuel cells, and the Self Generation Incentive Program to meet your energy needs.

[SCHEDULE A PHONE CALL >](#)

**Free energy efficiency training**

Our on-demand class catalog keeps growing. We've added more no-cost webinars in 2021 to help you meet your money-and energy-saving goals.

[SIGN UP FOR CLASSES >](#)

[pge.com](#) | [Privacy](#) | [Disclosure](#) | [Unsubscribe](#)

For inquiries, please do not reply to this email. Submit feedback via [Contact Us](#). "PG&E" refers to Pacific Gas and Electric Company, a subsidiary of PG&E Corporation, 77 Beale St. San Francisco, CA 94105.

© 2021 Pacific Gas and Electric Company. All rights reserved. These offerings are funded by California utility customers and administered by PG&E under the auspices of the California Public Utilities Commission.

CSB-0921-4016 SEED PGE06014