



Energy Advisor
October 2021



NEW PROGRAM

Take advantage of the new California Energy Design Assistance Program (CEDA)

CEDA serves PG&E school customers providing a complimentary and comprehensive analysis of different energy efficiency options. It lays out the potential energy savings and incentives tailored to your school's specific new construction or major alteration projects.

[Learn more »](#)



SAFETY

Access key business resources for emergency and preparedness planning

Minimize the impact of emergency situations and power outages on your operations, employees, and property with these resources.

[Prepare your business »](#)

NEW - EV FLEET SAVINGS CALCULATOR

A simpler way to analyze how much you can save

Use this newly enhanced tool to calculate total cost of ownership, explore grant funding and incentive programs, and determine potential fuel savings when you switch over to electric buses.

[Select your school bus »](#)



9 effective strategies to reduce arc flash incidents

Reduce the frequency, severity and harmfulness of arc flash incidents at your facility with these tips from PG&E's Nicholas Domich.

[Mitigate the risk »](#)



EQUIPMENT UPGRADE

Energy efficiency stimulus for schools

Upgrade HVAC and plumbing systems with funding and grants from the California Schools Healthy Air, Plumbing and Efficiency Program (CalSHAPE).

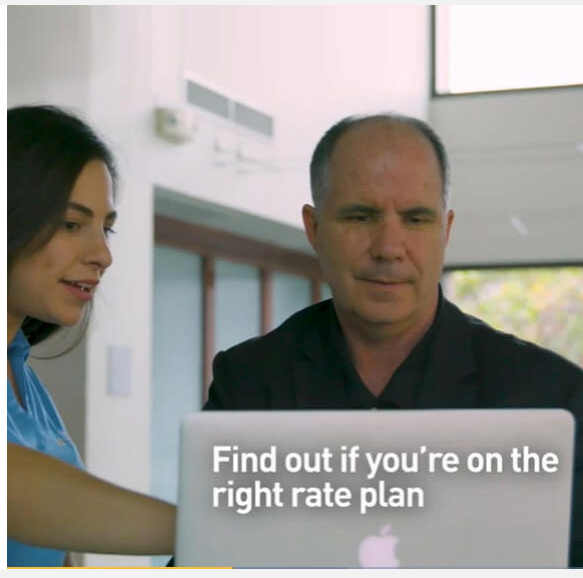
[Save on project costs »](#)

RATE PLAN OPTIONS

Save with the best rate plan

"I recommend other operations managers to compare PG&E rate plans annually via their online account and make sure they are on the right rate structure in line with their operations."
Mark Morisette, Facilities Director, Berkeley Repertory Theatre

[See your options »](#)



Find out if you're on the right rate plan

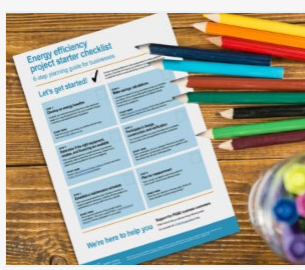
Business Resources



Energy resiliency resources for schools

Courtesy of the **Resilient Schools Collaborative**, this information sheet offers third party resources for K-12 schools focusing on energy resiliency, storage and assessment tools.

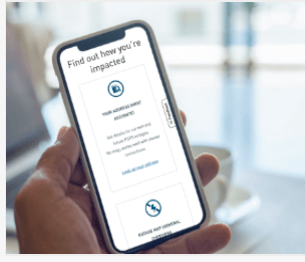
[DOWNLOAD NOW >](#)



6-step planning guide

Each step will empower you to realize the maximum money and energy savings from your energy efficiency project.

[GET YOUR CHECKLIST >](#)



Alerts

Review power outage information for your address and general area by visiting the Safety and Alert Center web page.

[KEEP IT HANDY >](#)



[pge.com](#) | [Privacy](#) | [Disclosure](#) | [Unsubscribe](#)

For inquiries, please do not reply to this email. Submit feedback via [Contact Us](#). "PG&E" refers to Pacific Gas and Electric Company, a subsidiary of PG&E Corporation.
77 Beale St. San Francisco, CA 94105.

© 2021 Pacific Gas and Electric Company. All rights reserved.
These offerings are funded by California utility customers and administered by PG&E under the auspices of the California Public Utilities Commission.

CSB-1021-4059 SEED SCHOOLS K-12