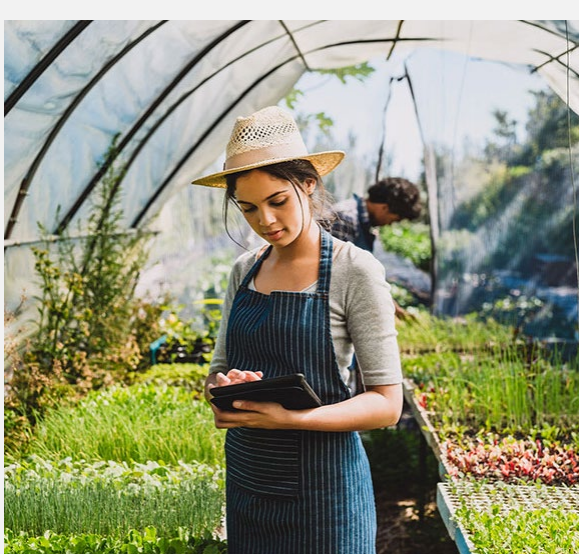




## RATE PLAN OPTIONS

**Save money by choosing the best rate plan for your business**

Business operations change from time to time. Checking rate plan options regularly can ensure you are on the best rate plan to save you money.

[Compare your options »](#)

## PAYMENT SUPPORT

**Flexible payment arrangements**

If you have higher-than-expected energy bills, we are here to help with flexible payment arrangements. Access your online account to learn more.

[Login now »](#)

## REBATES

**Enhanced VFD incentives are now available**

Adding VFDs to your irrigation equipment is cost effective with these rebates. Modulate pump speed to deliver the exact pressure and flow for specific applications – all while saving energy and money.

[Start saving »](#)**Getting the most benefit from your pump**

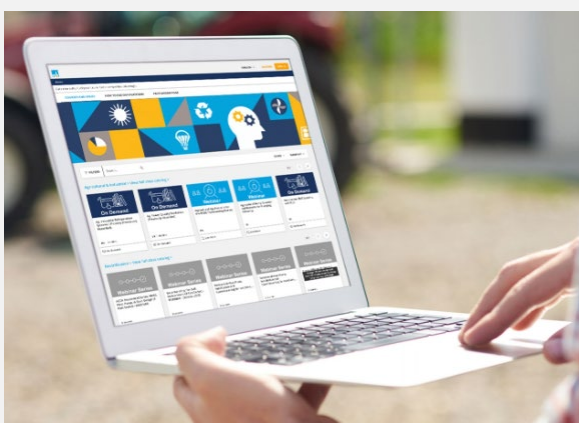
Take advantage of the **Advanced Pumping Efficiency Program** and follow these steps to obtain an irrigation pump efficiency test.

[Get a pump test »](#)

## INCENTIVES

**Save on backup power generators**

Run your operations with backup power for several hours during an outage. A **\$300** rebate is available for the purchase of an eligible generator.

[See if you qualify »](#)

## PG&amp;E WEBINAR

**Offset costs and receive incentives for your irrigation pumps**

Learn how you can implement solar, reduce irrigation pump costs and manage the system for peak efficiency from PG&E experts.

[Register now »](#)

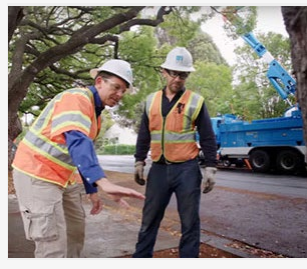
November 3, 2022 1:00-3:00 pm

**Business Resources****Service planning best practices**

Adding new wells or bigger pumps? Review these tips to get your service request processed in a timely manner.

[GET TIPS ›](#)**Powerline clearance**

Learn more about our regular inspections and tree work near electric powerlines to help prevent power outages and reduce safety hazards.

[LEARN MORE ›](#)**Safety resources**

From tree safety guidelines to storm debris clean-up, find all resources available for your business.

[REVIEW OTHER RESOURCES ›](#)[pge.com](#) | [Privacy](#) | [Disclosure](#) | [Unsubscribe](#) | [View as a web page](#)

For inquiries, please do not reply to this email. [Contact Us](#) for more information. "PG&E" refers to Pacific Gas and Electric Company, a subsidiary of PG&E Corporation.  
77 Beale St. San Francisco, CA 94105

© 2022 Pacific Gas and Electric Company. All rights reserved. These offerings are funded by California utility customers and administered by PG&E under the auspices of the California Public Utilities Commission.

CSB-1022-5585 SEED PGE05898 Agriculture