

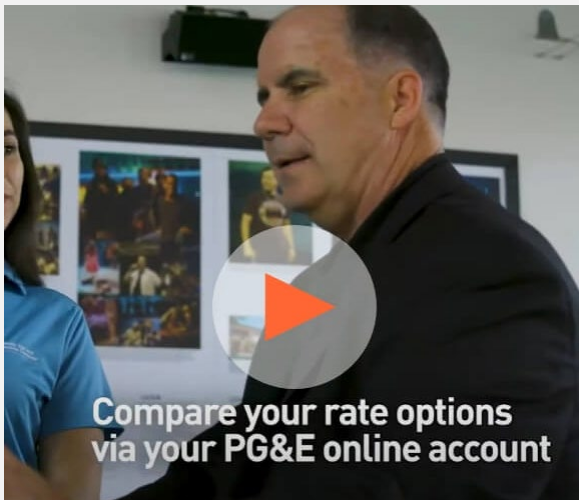


IN YOUR COMMUNITY

Stay up to date about regional news and insights with PG&E Currents

- Learn about programs that help you save money on your energy bills.
- Stay up to date on safety and clean energy initiatives.
- Attend events where you can connect with PG&E representatives.

[Review South Bay Central Coast updates »](#)



Compare your rate options via your PG&E online account

RATE PLAN OPTIONS

Save with a rate plan that best fits your business

See how this business reviewed their PG&E online account to make sure they were on the best rate plan in line with operations.

[See how you can save »](#)

WINTER PLANNING

Ways to save on gas costs

As temperatures drop, natural gas usage tends to go up.

[Find simple ways to save »](#)



LIGHTING CONTROLS

Reduce energy costs with occupancy sensors

Here are six insights you should know about for occupancy sensors.

[Review insights »](#)

ELECTRIFICATION

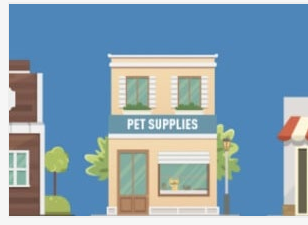
EV Fleet Savings Calculator

Calculate your fuel savings if transitioning your small business fleet to EVs.

[Launch the tool »](#)



Business Resources



Preparing for a power shutoff

What every business needs to know before a **Public Safety Power Shutoff**.

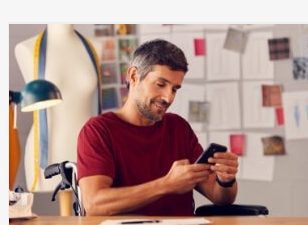
[PREPARE TODAY ›](#)



Winter preparedness checklist

Utilize these preparedness tips to keep your business, employees, and customers safe during unpredictable winter weather.

[DOWNLOAD YOUR COPY ›](#)



PG&E Safety and Alerts Center

This site is updated throughout an emergency to ensure you have the information you need.

[STAY SAFE ›](#)



[pge.com](#) | [Privacy](#) | [Disclosure](#) | [Unsubscribe](#) | [View as a web page](#)

For inquiries, please do not reply to this email. [Contact Us](#) for more information. "PG&E" refers to Pacific Gas and Electric Company, a subsidiary of PG&E Corporation. 77 Beale St. San Francisco, CA 94105

© 2022 Pacific Gas and Electric Company. All rights reserved. These offerings are funded by California utility customers and administered by PG&E under the auspices of the California Public Utilities Commission.

CSB-1122-5686 SEED PGE05900