



Energy Advisor
May 2021



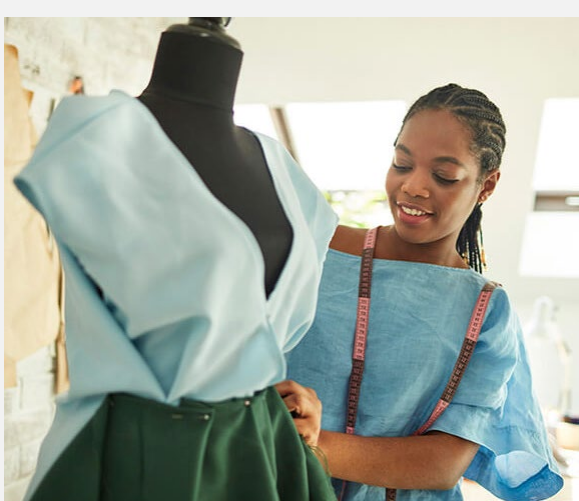
Reminder: COVID-19 customer service protections extended through **June 30, 2021**

CUSTOMER SUPPORT

Payment support options for your business

Get financial assistance with **Payment Arrangements**. Log in to your online account to conveniently pay your business' current balance in installments, or pay the entire balance at a later date, with an extension. If you are ready to make a payment, you can pick one of our easy-to-use payment options available.

[Get support now »](#)



YOUR COST AND USAGE

Track energy costs and usage

View your energy usage patterns and see how shifts in your operating schedule and changes in weather can impact costs over time.

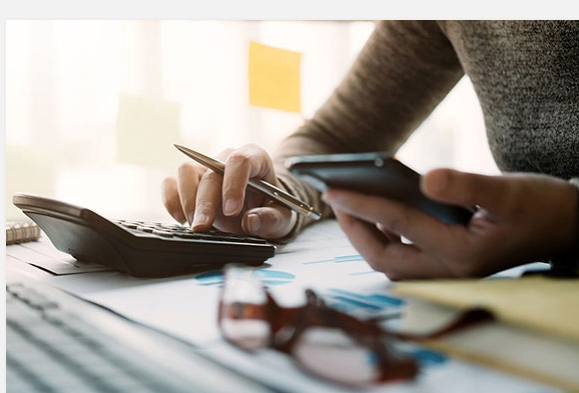
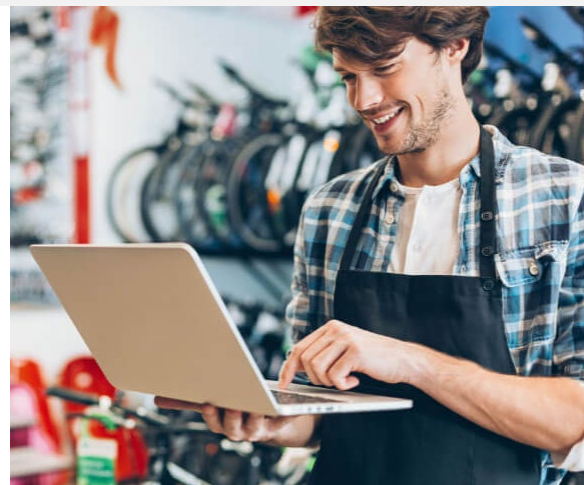
[Find out what impacts your bill »](#)

SEASONAL SAVINGS

Practical tips to keep energy bills down this summer

Save money with these quick, no-cost tips for your business.

[Reduce costs »](#)



ENERGY USE

Gas savings tips

See an immediate difference in your energy costs with these easy solutions.

[Find quick fixes »](#)

ENERGY EFFICIENCY

HVAC and lighting guide

Determine the best products and technologies to consider as part of an HVAC or lighting project, product upgrade, retrofit or repair.

[Request your copy »](#)



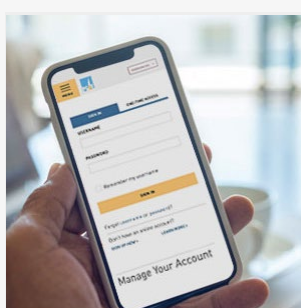
Business Resources



Supporting customers and reducing the impact of Public Safety Power Shutoffs

This year, customers will have better information and more resources available before, during and after PSPS events. We know losing power disrupts lives. We are continuing to work year-round and nonstop to make our system safer and reduce the impact of PSPS events without compromising your safety.

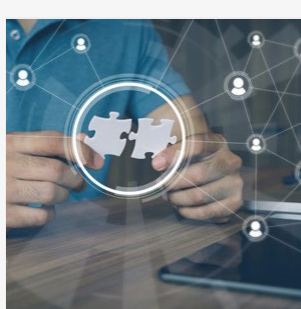
[LEARN MORE ›](#)



Confirm your phone number and email address to receive PSPS outage alerts

Set up alerts via **your online account** so we can reach you when your service is affected by a power outage and when it is restored.

[SIGN IN TO CONFIRM ›](#)



PSPS Safety Alerts for non-PG&E account holders

The new **PSPS address alert** allows you and your employees to get notified of power outages even if they aren't PG&E account holders.

[GET NOTIFIED ›](#)



[pge.com](#) | [Privacy](#) | [Disclosure](#) | [Unsubscribe](#)

For inquiries, please do not reply to this email. Submit feedback via [Contact Us](#). "PG&E" refers to Pacific Gas and Electric Company, a subsidiary of PG&E Corporation, 77 Beale St. San Francisco, CA 94105.

© 2021 Pacific Gas and Electric Company. All rights reserved. These offerings are funded by California utility customers and administered by PG&E under the auspices of the California Public Utilities Commission.

CSB-0521-3337 SEED PGE05898