



**Energy Advisor**  
May 2020



**Recovery Resources**

#### COVID-19 RECOVERY

### Online tools and assistance programs

As you navigate these challenging times, review our online tools to help lower your business' energy usage and learn more about other assistance programs to help you save.

[Review and save »](#)



#### CUSTOMER SUPPORT

### Billing and service modifications

PG&E has suspended service disconnections for non-payments and is waiving security deposits.

[Learn more »](#)

#### SAFETY

### A brand new safety resource for businesses

Our Safety Action Center now includes key information and tips every business needs to know to prepare for a power shutdown.

[Get the tips »](#)

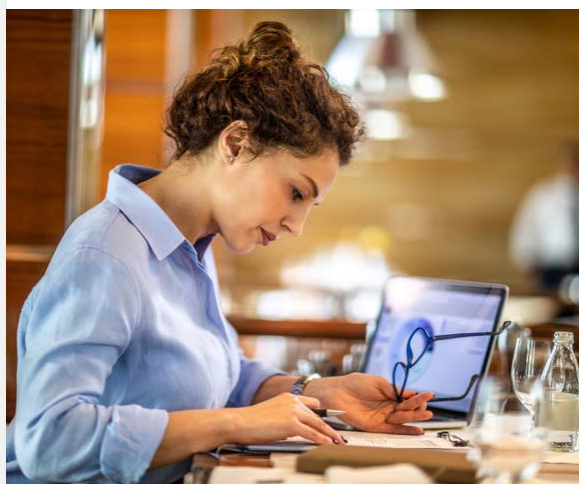


#### PG&E ENERGY CENTERS

### Free online courses—energy education

Gain new skills and fuel your future with online courses and a robust learning library, all at no cost.

[Enroll today »](#)



#### ENERGY EFFICIENCY PLANNING

### Compare financing options

From the new financing program administered by the State of California to PG&E's 0% interest loans, evaluate options for your next project.

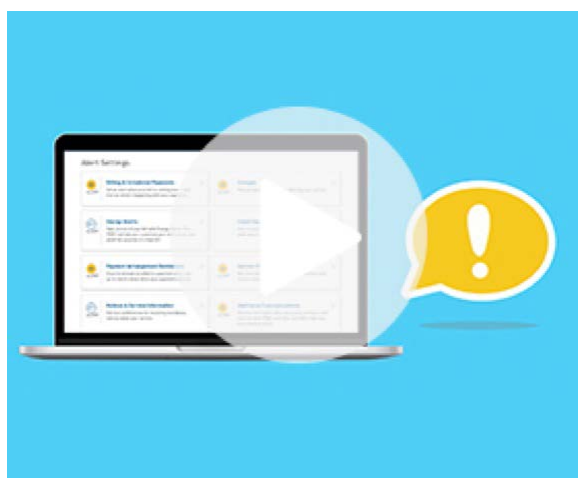
[Stay in the know »](#)

#### VIDEO TUTORIAL

### Receive important alerts

Set up notifications to receive alerts about your business' energy use, planned and emergency outages.

[Watch and update »](#)



## Business Resources



### Find out if your business is eligible?

PG&E's Economic Development Rate (EDR) helps businesses grow and maintain jobs in California.

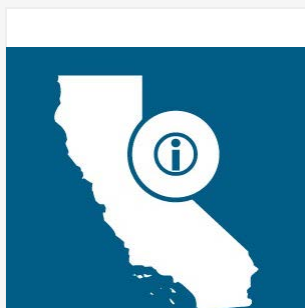
[SEE IF YOU QUALIFY ›](#)



### Take advantage of the paycheck protection program

Receive funds to pay up to 8 weeks of payroll costs including benefits. You can also pay interest on mortgages, rent and utilities.

[LEARN HOW IT WORKS ›](#)



### Looking for resources for employees or colleagues who have been laid off?

OnwardCA is a one-stop resource for Californians impacted by job loss during the COVID-19 pandemic.

[ACCESS RESOURCES ›](#)



[pge.com](#) | [Privacy](#) | [Disclosure](#) | [Unsubscribe](#)

For inquiries, please do not reply to this email. Submit feedback via [Contact Us](#). "PG&E" refers to Pacific Gas and Electric Company, a subsidiary of PG&E Corporation  
77 Beale St. San Francisco, CA 94105.

© 2020 Pacific Gas and Electric Company. All rights reserved.  
These offerings are funded by California utility customers and administered by PG&E under the auspices of the California Public Utilities Commission.

CSB-0520-2178 SEED PGE05899