



Energy Advisor

March 2021

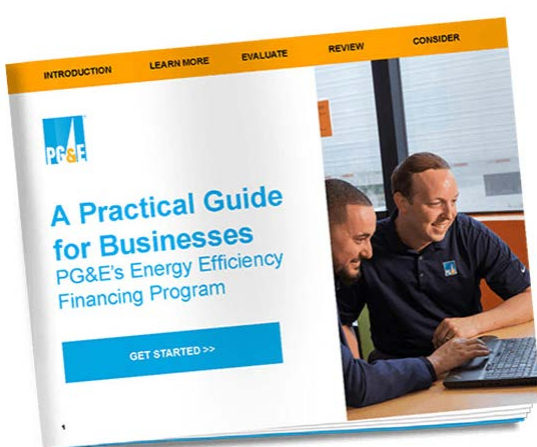


REBATES

Get money back for your upgrade

Make the switch to energy-efficient equipment, lower your operating costs and improve guest satisfaction with available rebates for **cooking and dishwashing equipment, refrigeration, HVAC, laundry systems, pool heating and more.**

[Start saving »](#)



ENERGY EFFICIENCY FINANCING

0% interest financing explained

With our financing program, get interest-free loans up to \$4,000,000 per premise to replace inefficient equipment. Learn more with this brand-new program toolkit.

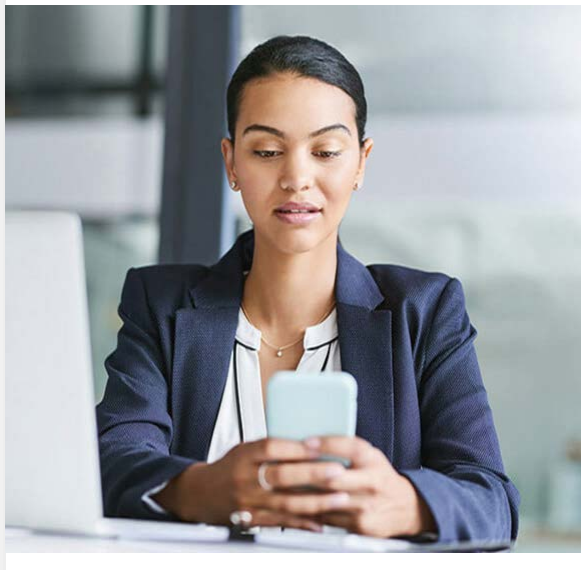
[Download your toolkit »](#)

SERVICE PLANNING

Tips to get your service request processed smoothly

PG&E's **Nicholas Domich** and **Jennifer Betancourt** provide tips for you to consider when submitting your electric or gas service request.

[Stay in the know »](#)



CUSTOMER SUPPORT

Strengthen business resilience with energy-efficient equipment

Connect with a **PG&E Energy Advisor** today and learn how you can upgrade inefficient equipment at your business with more efficient models cost effectively.

[Connect now »](#)

SAFETY

Did you know?

The new **PSPS address alert** allows you and your employees to get notified of power outages even if they aren't PG&E account holders.

[Get notified »](#)



Business Resources



COVID-19 resources compiled by California Hotel and Lodging Association

Access the latest employee and employer resources from re-opening guidelines to financial relief.

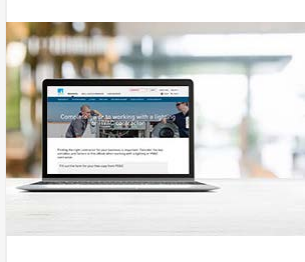
[TAKE ADVANTAGE NOW »](#)



Energy efficiency project starter checklist

Prepare to discuss your project with contractors to realize the maximum money and energy savings for your business.

[GET YOUR CHECKLIST »](#)



Guide to working with a contractor

Consider these key variables and factors in this eBook when working with a lighting or HVAC contractor.

[DOWNLOAD YOUR FREE GUIDE »](#)



[pge.com](#) | [Privacy](#) | [Disclosure](#) | [Unsubscribe](#)

For inquiries, please do not reply to this email. Submit feedback via [Contact Us](#). "PG&E" refers to Pacific Gas and Electric Company, a subsidiary of PG&E Corporation, 77 Beale St. San Francisco, CA 94105.

© 2021 Pacific Gas and Electric Company. All rights reserved.

These offerings are funded by California utility customers and administered by PG&E under the auspices of the California Public Utilities Commission.

CSB-0321-3131 PGE05898