
RATE COMPARISON VIDEO
Choose the best electric rate plan for your business

Compare cost savings based on your business' energy use with **Rate Simulator**. Select rate options for each service location, in one spot, with **Batch Rate**. Learn about these two newly launched rate-comparison features with this short video.

[Watch now »](#)

CUSTOMER SUPPORT
Helping critical facility customers prepare for emergencies

As a critical customer, you can now receive advanced communication, prioritized restoration, and other resources before and during outages.

[Learn more »](#)
EV FLEET PROGRAM
Calculate savings with the EV Fleet Calculator

Save money, eliminate tailpipe emissions, and simplify maintenance by electrifying your fleet.

[Launch interactive tool »](#)

Get compensated for helping to prevent power outages this summer

Enroll in this program and get compensated for reducing your energy use during times of high-grid stress and emergencies. *Participation is voluntary and there is no penalty for not participating.*

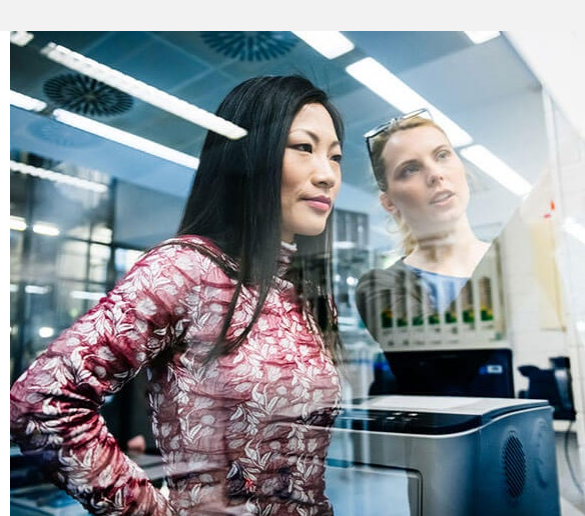
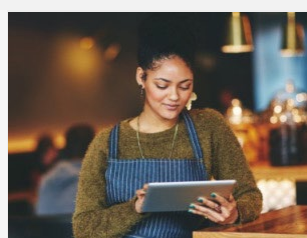
[Learn more »](#)

NEW — EBOOK GUIDE
Electric savings tips by equipment

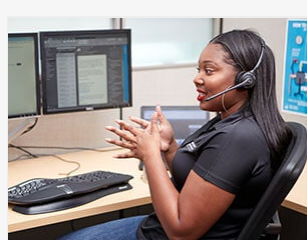
Find energy-saving tips for your **HVAC, refrigeration, lighting, kitchen, agricultural and general office equipment** and save money before replacing or adding new equipment.

[Download your guide »](#)
BATTERY STORAGE
Is battery storage right for your business?

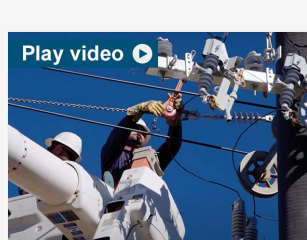
Optimize your energy use by storing power now to use later. Learn more about financing options, potential savings, and next steps to get started.

[Get the details »](#)

Business Resources

Other energy incentive programs

Earn a monthly incentive for reducing energy consumption to prescribed levels when called upon with the **Base Interruptible Program**.

[LEARN MORE ›](#)

Energy resiliency

Strengthen energy resiliency at your business with the help from your PG&E representative. Discuss your options at your convenience.

[SCHEDULE A TIME TO TALK ›](#)

System Hardening

We are committed to enhancing long-term safety and helping reduce the risk of wildfires by strengthening our electric systems.

[REVIEW SOLUTIONS ›](#)

pge.com | [Privacy](#) | [Disclosure](#) | [Unsubscribe](#)

For inquiries, please do not reply to this email. Submit feedback via [Contact Us](#). "PG&E" refers to Pacific Gas and Electric Company, a subsidiary of PG&E Corporation.
77 Beale St. San Francisco, CA 94105.

© 2021 Pacific Gas and Electric Company. All rights reserved.
These offerings are funded by California utility customers and administered by PG&E under the auspices of the California Public Utilities Commission.

CSB-0721-3527 SEED CRITICAL FACILITY