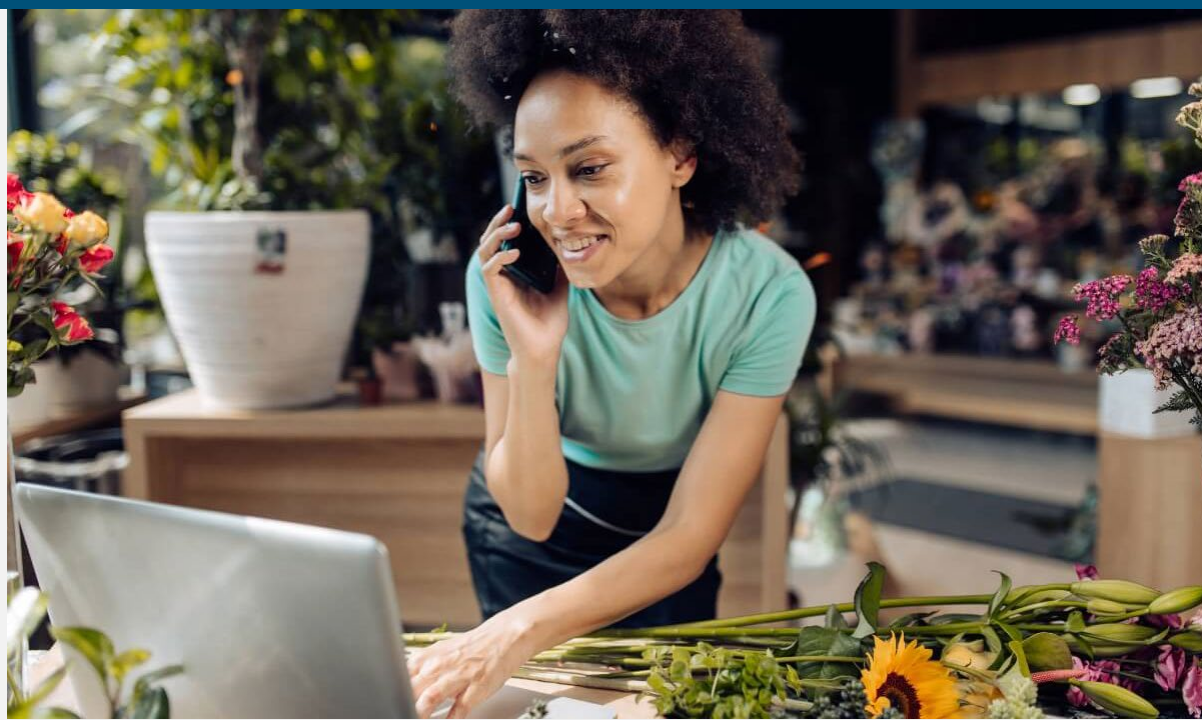




Energy Advisor
February 2022



MONEY SAVINGS

Reduce costs with energy efficiency programs and tips

Discover new ways to reduce electric costs with PG&E's helpful programs and easy-to-use-tools. These resources are designed to strengthen business energy resiliency for years to come.

[Start saving »](#)



HVAC REBATES

Upgrade your HVAC and reduce operating costs

HVAC upgrades can reduce operating expenses, improve health and comfort and make your business more environmentally sustainable.

[Review rebate catalog »](#)

INCENTIVE PROGRAMS

Demand Response offers financial benefits for your business

Find out how reducing demand offsets energy costs and leads to other incentives for your business.

[Explore the benefits »](#)



Choose the most convenient payment option

Set up recurring payment options and receive paperless statements via your online account. Pay your energy bill online, by phone or by mail.

[Choose your option »](#)



Redwood Coast-Humboldt County Airport Microgrid

ENERGY RESILIENCY TRENDS

More communities are now eligible to pursue microgrids

Learn how microgrid infrastructure can enable energy resilience and keep critical systems running at your business during an emergency.

[Learn more »](#)

COMMUNITY

Give the gift of energy

Lend a supportive hand and help pay the energy bill of someone in need by simply filling out this form.

[Help your community »](#)



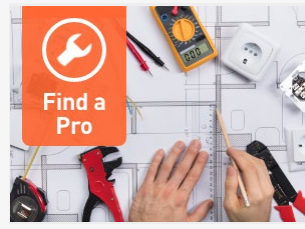
Business Resources



Financing options for your energy efficiency project

Here is a side-by-side comparison chart of available financing options for your upcoming energy efficiency project.

[COMPARE NOW >](#)



The trade professional directory

Contractors in PG&E's database can help you with your equipment upgrade project.

[FIND A CONTRACTOR >](#)



Discount available

Your business may be eligible to reduce electric costs by 12% or more for five years with our **Economic Development Rate** program.

[SEE IF YOU QUALIFY >](#)



[pge.com](#) | [Privacy](#) | [Disclosure](#) | [Unsubscribe](#)

For inquiries, please do not reply to this email. Submit feedback via [Contact Us](#). "PG&E" refers to Pacific Gas and Electric Company, a subsidiary of PG&E Corporation, 77 Beale St. San Francisco, CA 94105.

© 2022 Pacific Gas and Electric Company. All rights reserved. These offerings are funded by California utility customers and administered by PG&E under the auspices of the California Public Utilities Commission.

CSB-0222-4360 SEED PGE05898