



Energy Advisor
December 2020

**ONLINE ACCOUNT****Update your profile and find ways to save**

Answer a few quick questions about your operations and receive a customized energy-savings plan in time for the upcoming year. Access helpful tools to monitor your usage and find out what factors impact your bill.

[Log in and start saving »](#)

**WINTER SAFETY****Safety and preparedness resources**

Power outages can happen anytime. We compiled our top safety resources from checklists to online tools, guides, and programs to help your business prepare.

[See safety resources »](#)

HVAC**Improving indoor air quality**

Join our webinar, **Commercial Quality Maintenance and Installation of Economizers**, to learn the latest on HVAC technology, compliance and testing standards.

[Register now »](#)

**RECOVERY RESOURCES****Support for businesses**

California and the federal government are providing assistance programs and employer resources to help small businesses recover and reopen safely.

[Stay informed »](#)

**ELECTRIC RATES****Guidance for rate plan updates**

Review these 3 factors that impact your business' energy usage. Evaluate now.

[Download the guide »](#)

BACKUP POWER**Planning for business continuity**

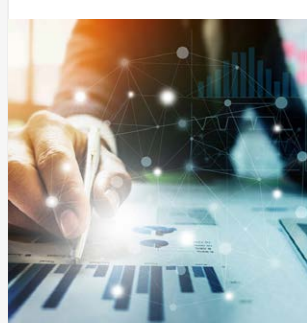
Backup electric power, including generators, can be a vital part of any business' preparedness and operational continuity plan.

[Learn more »](#)

**Business Resources****Upcoming rate plan changes**

Starting in March 2021, peak hours will shift to later in the day for time-of-use rate plans. Review your rate plan options via your online account and opt in early if it is right for your business.

[REVIEW YOUR OPTIONS ›](#)

**Choose the most convenient payment option**

Set up recurring payment options and receive paperless statements via your online account. Pay your energy bill online, by phone or by mail.

[CHOOSE A CONVENIENT METHOD ›](#)



[pge.com](#) | [Privacy](#) | [Disclosure](#) | [Unsubscribe](#)

For inquiries, please do not reply to this email. Submit feedback via [Contact Us](#). "PG&E" refers to Pacific Gas and Electric Company, a subsidiary of PG&E Corporation.
77 Beale St. San Francisco, CA 94105.

© 2020 Pacific Gas and Electric Company. All rights reserved. These offerings are funded by California utility customers and administered by PG&E under the auspices of the California Public Utilities Commission.

CSB-1220-2967 SEED PGE05898