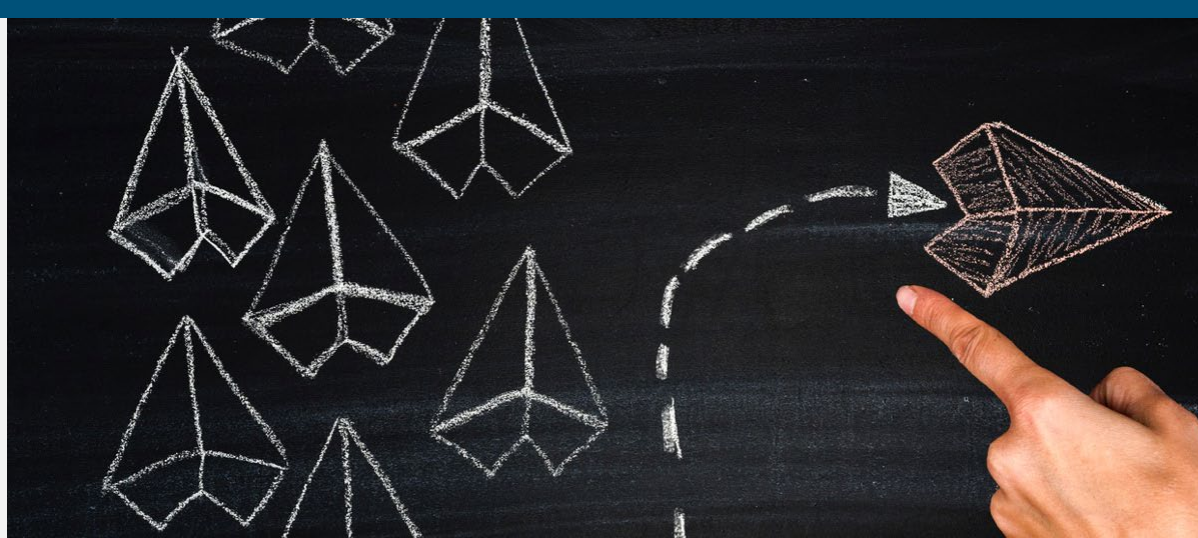




Energy Advisor
April 2020



FACILITY OPERATIONS

12 ways to save your business money and energy

PG&E remains committed to providing safe and reliable energy to our customers. We also understand that many of you are facing severe challenges due to the current COVID-19 health crisis. Here are quick tips and easy-to-use online resources to help you manage your business' energy use and bills.

[Review tips »](#)

COVID-19



SAFETY

Support for our customers

We are implementing a series a billing and service enhancements to keep our customers and the communities we serve safe.

[Continue reading »](#)

RATES REMINDER

Have you compared your rate plan options?

Follow these quick steps to see if moving to a new rate plan is best for your business.

[Change and save »](#)

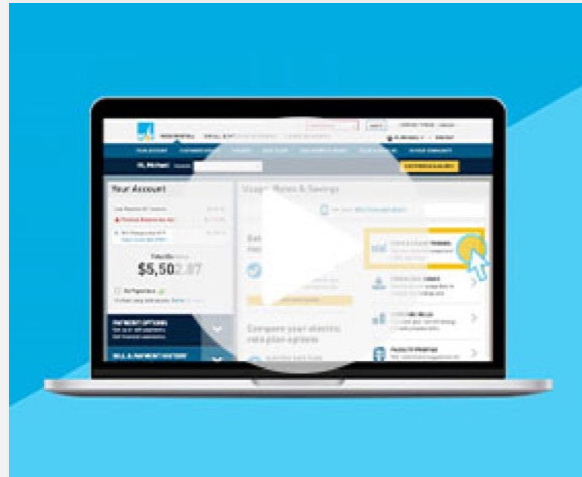


SAFETY

You may see us in your community working to improve safety

We are making meaningful progress in helping California reduce wildfire risks and keep customers and the communities we serve safe.

[Learn more »](#)



MONEY-SAVING VIDEO

Find ways to save with Cost and Usage tools

See how you can break down your energy use by the day and work it into your costs.

[Watch now »](#)

PG&E ENERGY ADVISORS

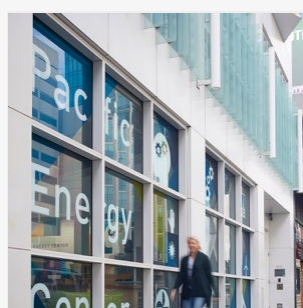
Be on alert for scams

We take your personal and online security very seriously. If you ever doubt the validity of an email, call, text or visit from PG&E, call 1-800-743-5000.

[Learn more »](#)



Business Resources



PG&E Energy Centers

Gain new skills and fuel your future with online courses and a robust learning library, all at no cost.

[SEARCH THE CLASS CATALOG >](#)



**Together, Building
a Better California**

[pge.com](#) | [Privacy](#) | [Disclosure](#) | [Unsubscribe](#)

For inquiries, please do not reply to this email. Submit feedback via [Contact Us](#). "PG&E" refers to Pacific Gas and Electric Company, a subsidiary of PG&E Corporation
77 Beale St. San Francisco, CA 94105.

© 2020 Pacific Gas and Electric Company. All rights reserved.
These offerings are funded by California utility customers and administered by PG&E under the auspices of the California Public Utilities Commission.

CSB-0420-2045 PGE05899