



# Pacific Gas and Electric Company Potrero Site Cleanup Project Weekly Activity Report 12/1/17

This report provides an update on the status of cleanup work at the former power plant located at 1201 Illinois Street. Cleanup work is being performed as part of a company-wide program to address sites that have been impacted by historic operations. Project oversight is provided by the San Francisco Bay Region Water Quality Control Board and the city/county of San Francisco.

---

## Work Completed 11/20/17 to 12/1/17

- Continued excavating debris and soil in preparation for below ground soil treatment.
- Removed in-water turbidity curtains, and related equipment. The turbidity curtains are required when doing work in water. They will be reinstalled next summer when in water work resumes next year.
- Continued collecting soil and groundwater samples in the Tank Farm Area.

---

## Work Planned for Upcoming Weeks

- Continue excavating debris and soil in preparation for below ground soil treatment.
- Continue collecting soil and groundwater samples in the Tank Farm Area.

---

## Safety and Air Monitoring

- Air monitoring confirmed that air quality remained at levels protective of the health of the surrounding community.
- All work is done in accordance with a site-specific Health and Safety Plan that meets state and federal standards.

---

## Work Hours

- 7 A.M. to 8 P.M., Monday through Friday.

---

## Anticipated Impacts

- Deliveries of construction materials and other trucking activities may cause minor traffic impacts.
- Trucks will use approved routes, avoid residential areas, and not park off-site to minimize impacts.

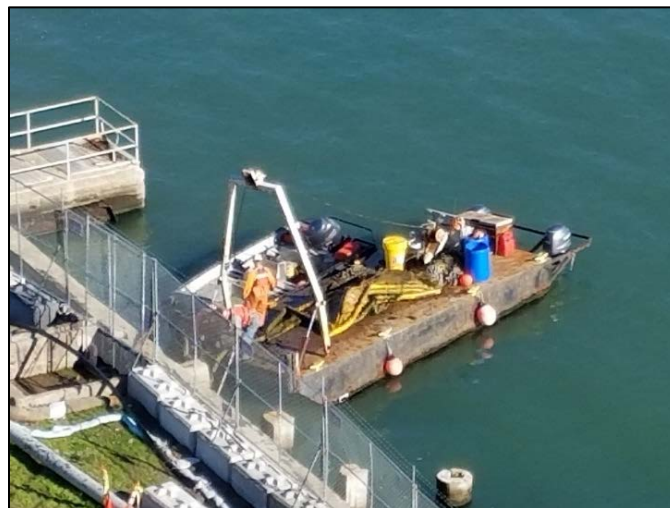
---

## Site Security

- On-site security is present at the site after hours and the access gates are closed to the public at all times.

---

## Photo Log



Removing an in-water barrier, called a turbidity curtain

If you need additional information, please contact the PG&E toll-free response line at (866) 247-0581 or [remediation@pge.com](mailto:remediation@pge.com) (calls returned the same or next business day). Se habla español. [www.pge.com/potrero](http://www.pge.com/potrero).