



Pacific Gas and Electric Company Potrero Site Cleanup Project Weekly Activity Report 8/4/17

This report provides an update on the status of cleanup work in the Northeast Area of the former power plant located at 1201 Illinois Street. Cleanup work is being performed as part of a company-wide program to address sites that have been impacted by historic operations. Project oversight is provided by the San Francisco Bay Region Water Quality Control Board and the city/county of San Francisco.

Work Completed 7/31/17 to 8/4/17

- Finished installing a plastic liner in the soil stockpile area, and began managing soil on-site
- Excavated soil to prepare for the installation of sheet piles and other work
- Installed the truck scale and cleaning station that will be used to clean trucks before they leave the work site
- Loaded and transported soil off-site for disposal
- Continued to set-up the construction water and storm water management systems
- Removed underground utility lines no longer in use

Work Planned for Upcoming Week

- Delivery of large equipment, including a crane and steel sheet piles
- Assemble the crane that will be used to install sheet piles
- Remove areas of concrete that cover the ground and above-ground piping
- Continue excavating and transporting soil from the sheet pile work area to a licensed off-site disposal facility
- Continue removing underground utility lines no longer in use

Air Monitoring

- Air monitoring confirmed that air quality remained at levels protective of the health of on-site workers and the surrounding community
- Workers wore respirators per safety requirements during a portion of the week until air data confirmed they were not required

Work Hours

- 7 A.M. to 8 P.M., Monday through Friday; work may also occur on Saturday, 8/5 and Sunday, 8/6 during these hours

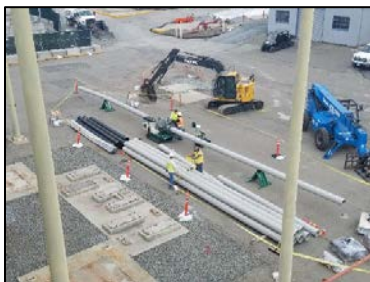
Anticipated Impacts

- Delivery of large equipment may slow down traffic around the delivery gate on 23rd Street; we will coordinate deliveries with neighbors to minimize impacts

Site Security

- Site security is provided at the site and the access gates are closed to the public at all times

Photo Log



Pipe Welding for the Storm Water Management System



Soil Loading

If you need additional information, please contact the PG&E toll-free response line at (866) 247-0581 or remediation@pge.com (calls returned the same or next business day). Se habla español. www.pge.com/potrero.