

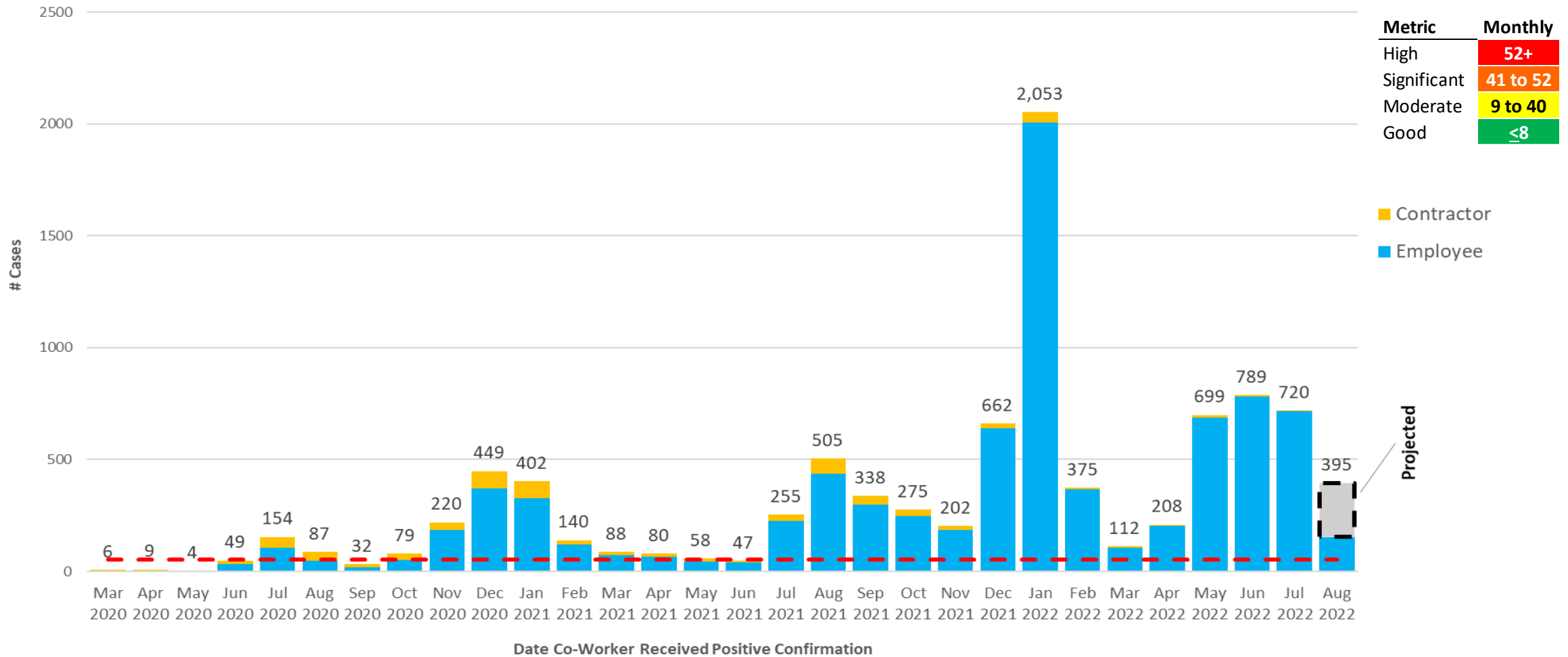


COVID-19 Monthly Trend

(as of 4pm on 8/12/2022)

Key Takeaways:

153 positive employee cases in August (as of 8/12/2022)



- Heat map metric is based on Centers for Disease Control categories for community transmissibility as of August 2021 (benchmark during peak levels).
- Current month projection is based on daily run rate (month-to-date counts / by month-to-date days x total days in month)

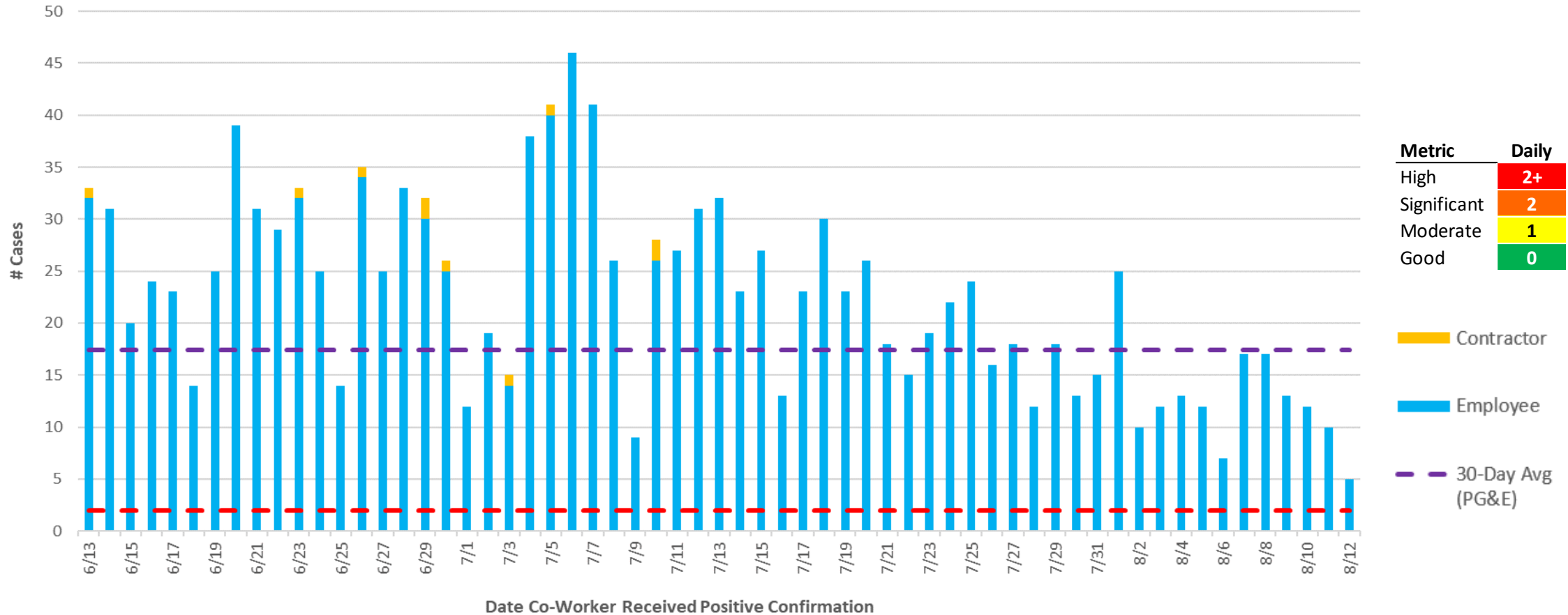


COVID-19 Daily Trend (60-day range)

(as of 4pm on 8/12/2022)

Key Takeaways:

The 30-day average is 18 new cases per day



Metric	Daily
High	2+
Significant	2
Moderate	1
Good	0

- Contractor
- Employee
- 30-Day Avg (PG&E)

- Heat map metric is based on Centers for Disease Control categories for community transmissibility as of August 2021 (benchmark during peak levels).
- Current month projection is based on daily run rate (month-to-date counts / by month-to-date days x total days in month)

Internal



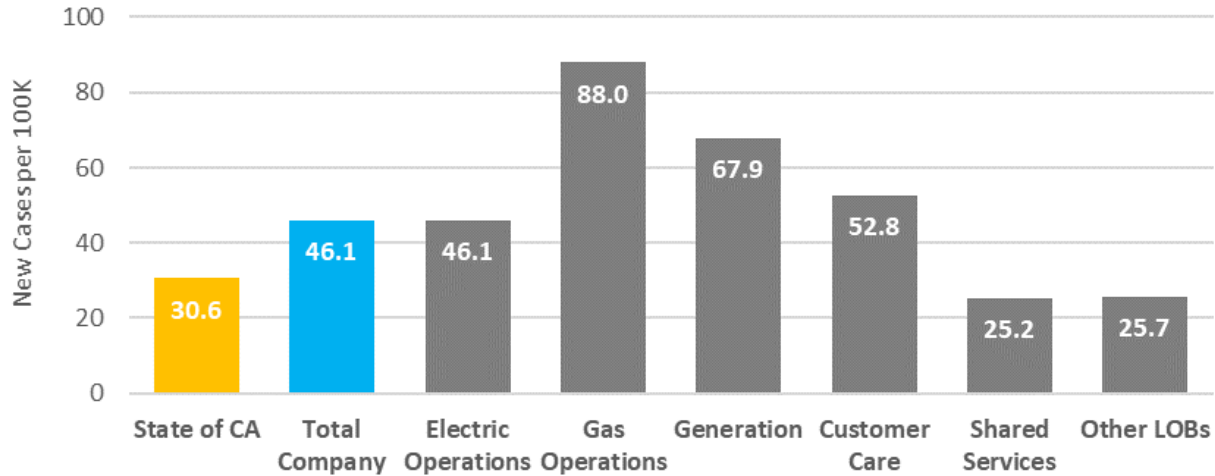
COVID-19 New Case Rate Comparisons

(as of 4pm on 8/12/2022)

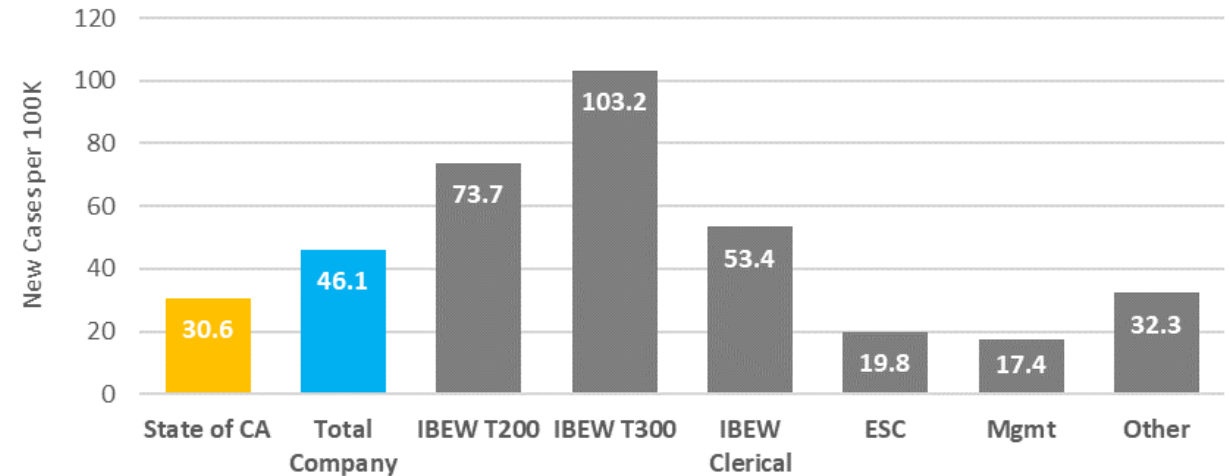
Key Takeaways:

PG&E new case rate is 51% more than the State of CA

LOB Comparison
7-Day Average of New Cases per 100K



Employee Group Comparison
7-Day Average of New Cases per 100K



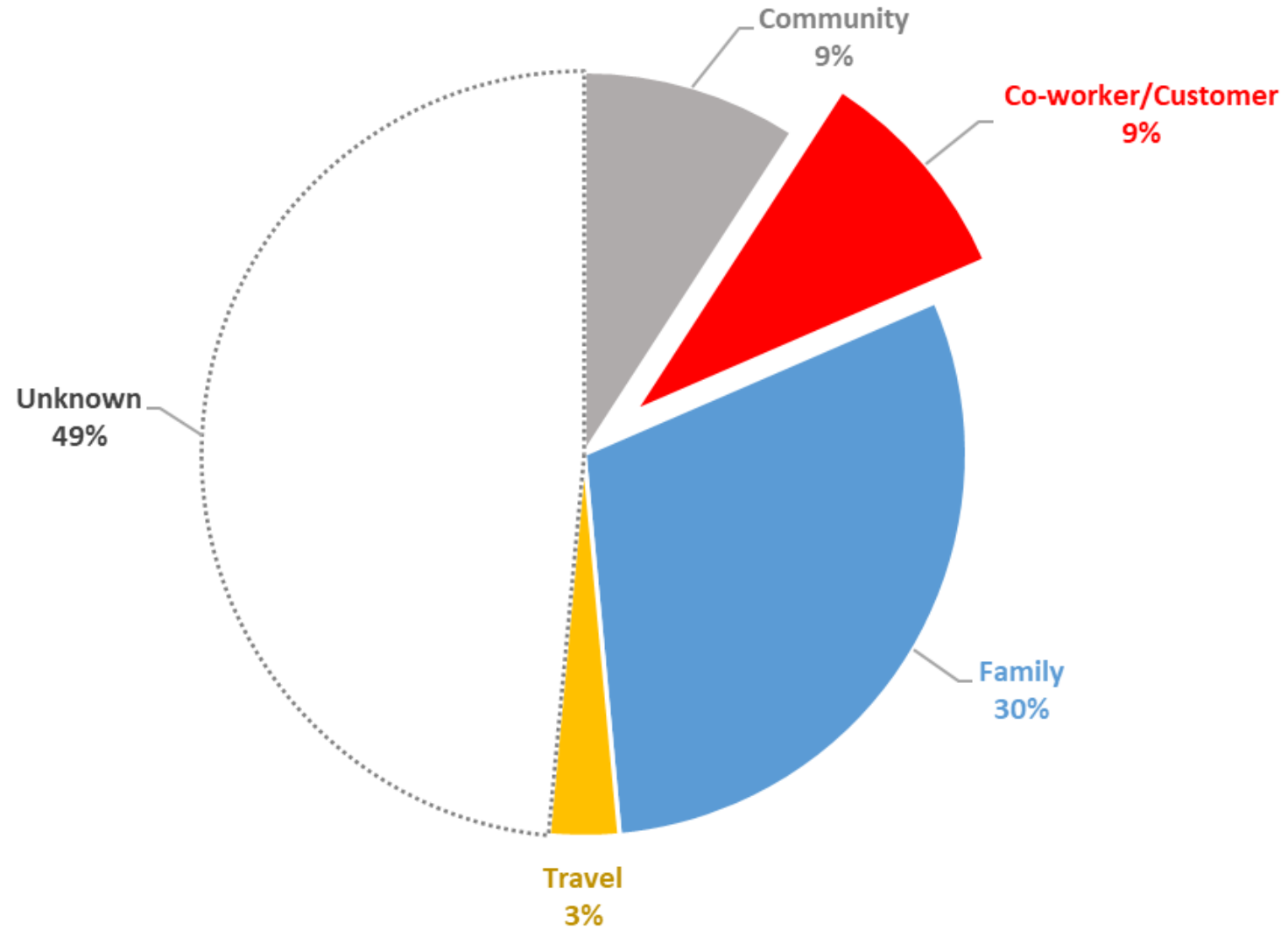
**Case rates are based on 7-day average to normalize report timing volatility. They are displayed in a per capita per 100,000 basis to compare disproportional populations. CA case rates are provided by the www.covid19.ca.gov/state-dashboard/ website

APPENDIX



COVID-19 Employee Reported Exposure Source since March 2020

(as of 4pm on 8/12/2022)

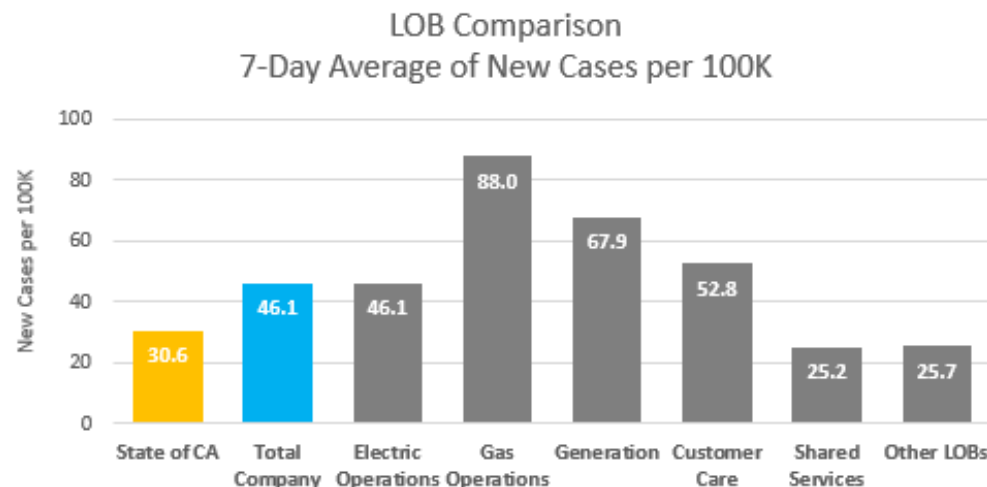




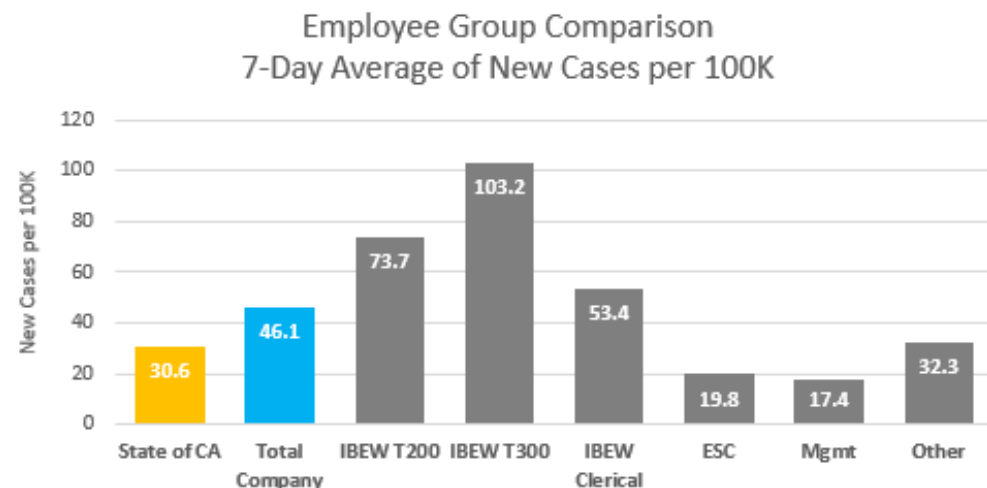
Detail: COVID-19 New Case Rate Comparisons

(as of 4pm on 8/12/2022)

As of August 12, 2022						
A	B	C	D=B/C	E	F=E/7	G=F/C*100K
Employee Group	Total Positives	Active EEs	% Positives	7-Day Count	7-Day Avg	New Cases per 100K
1 State of CA						30.6
3 Total Company	8,553	25,116	34.1%	81	11.6	46.1
4 Electric Operations	2,526	6,202	40.7%	20	2.9	46.1
5 Gas Operations	2,153	4,548	47.3%	28	4.0	88.0
6 Generation	483	1,052	45.9%	5	0.7	67.9
7 Customer Care	764	2,166	35.3%	8	1.1	52.8
8 Shared Services	350	1,133	30.9%	2	0.3	25.2
9 Other LOBs	2,104	10,015	21.0%	18	2.6	25.7
10 Anonymous/Separated	173					



As of August 12, 2022						
A	B	C	D=B/C	E	F=E/7	G=F/C*100K
Employee Group	Total Positives	Active EEs	% Positives	7-Day Count	7-Day Avg	New Cases per 100K
11 State of CA						30.6
12 Total Company	8,553	25,116	34.1%	81	11.6	46.1
13 IBEW T200	3,183	6,204	51.3%	32	4.6	73.7
14 IBEW T300	1,533	3,184	48.1%	23	3.3	103.2
15 IBEW Clerical	895	1,871	47.8%	7	1.0	53.4
16 ESC	923	4,333	21.3%	6	0.9	19.8
17 Mgmt	1,474	8,199	18.0%	10	1.4	17.4
18 Other	373	1,325	28.2%	3	0.4	32.3
19 Anonymous/Separated	172					

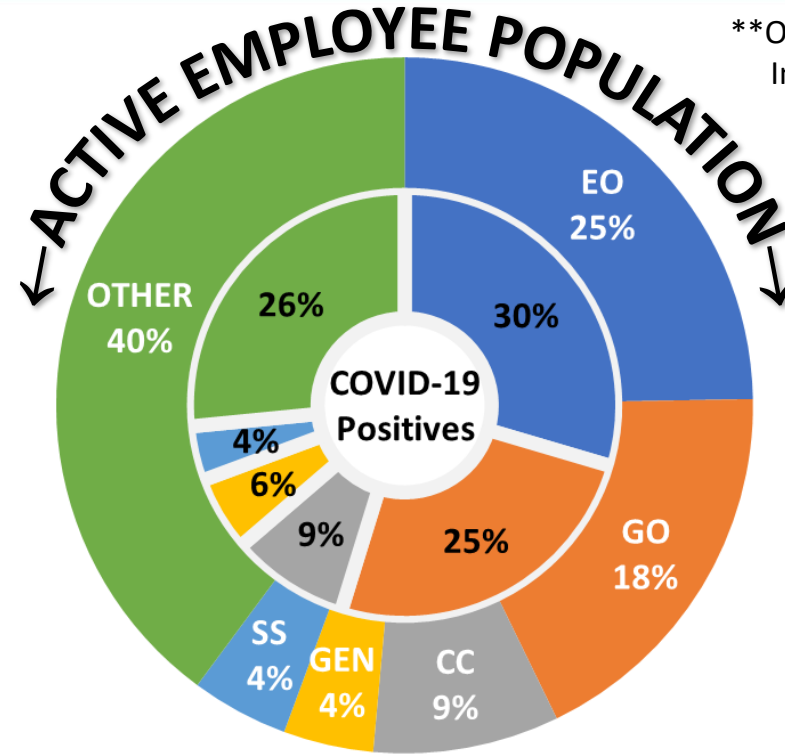


**Case rates are based on 7-day average to normalize report timing volatility. They are displayed in a per capita per 100,000 basis to compare disproportional populations. CA case rates are provided by the www.covid19.ca.gov/state-dashboard/ website



Detail: COVID-19 Trends by LOB

(as of 4pm on 8/12/2022)



**Outer Circle = Active Employees
Inner Circle = COVID-19 Positives

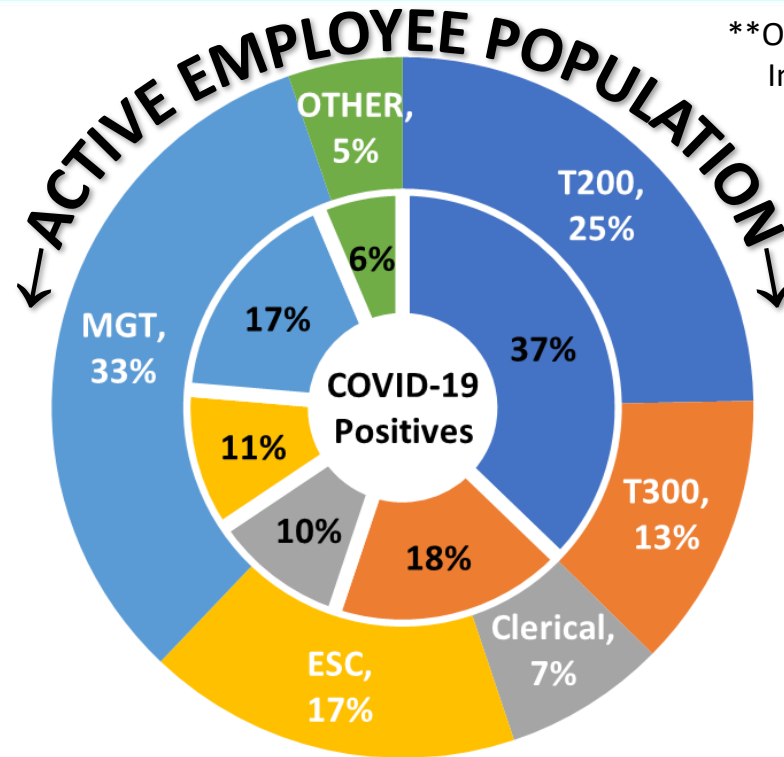
Line of Business	Positives by Month																							Total Positives	Active EEs	% Positives	Active Quarantines Ending within				
	2020				2021								2022														1 Week	2 Weeks	Total	% Quar.	
	Q1	Q2	Q3	Q4	Jan	Feb	Mar	Apr	May	Jun	Jul	Aug	Sep	Oct	Nov	Dec	Jan	Feb	Mar	Apr	May	Jun	Jul								Aug
Electric Operations	1	17	32	170	90	30	22	13	18	18	67	125	119	78	69	206	670	94	28	38	153	207	217	44	2,526	6,202	40.7%	11		11	0.2%
Gas Operations	1	12	45	141	76	29	17	17	6	9	59	120	60	71	39	173	525	98	25	40	172	185	184	49	2,153	4,548	47.3%	9	2	11	0.2%
Customer Care	2	4	30	62	35	7	6	6	6	2	19	44	25	20	13	49	152	40	12	15	66	76	61	12	764	2,166	35.3%	1		1	0.0%
Generation	0	1	10	14	14	11	3	3	2	3	18	26	10	6	14	28	109	31	4	10	39	70	47	10	483	1,052	45.9%	1		1	0.1%
Shared Services	0	1	3	27	11	3	2	4	0	1	10	16	16	9	8	17	87	17	4	9	30	36	33	6	350	1,133	30.9%	2		2	0.2%
Other	0	7	39	154	84	32	17	19	9	7	51	89	60	56	41	160	447	87	33	80	224	203	173	32	2,104	10,015	21.0%	6		6	0.1%
Anonymous/Separated	1	1	14	37	16	8	5	3	1	1	3	18	7	8	3	7	16	1	1	13	2	6	1	0	173						
Total	5	43	173	605	326	120	72	65	42	41	227	438	297	248	187	640	2,006	368	107	205	686	783	716	153	8,553	25,116	34.1%	30	2	32	0.1%

1. Organizational hierarchies are refreshed on the 1st week of the current reporting month.



Detail: COVID-19 Trends by Employee Group

(as of 4pm on 8/12/2022)



**Outer Circle = Active Employees
Inner Circle = COVID-19 Positives

Employee Group	Positives by Month																					Total Positives	Active EEs	% Positives	Active Quarantines Ending within							
	2020				2021								2022												1 Week	2 Weeks	Total	% Quar.				
	Q1	Q2	Q3	Q4	Jan	Feb	Mar	Apr	May	Jun	Jul	Aug	Sep	Oct	Nov	Dec	Jan	Feb	Mar	Apr	May								Jun	Jul	Aug	
IBEW T200	1	16	49	179	111	36	23	21	16	12	70	147	101	88	71	228	836	152	38	54	236	311	326	61	3,183	6,204	51.3%	14	1	15	0.2%	
IBEW T300	1	10	23	93	52	15	8	8	9	15	56	89	75	44	37	132	409	51	13	22	80	116	132	43	1,533	3,184	48.1%	9	1	10	0.3%	
IBEW Clerical	1	5	28	65	40	8	10	6	8	3	21	45	27	21	17	56	197	49	11	15	83	94	70	15	895	1,871	47.8%	2		2	0.1%	
ESC	0	6	14	81	32	17	8	10	3	3	23	47	31	36	16	73	174	39	17	34	92	83	73	11	923	4,333	21.3%	1		1	0.0%	
Management	1	5	35	132	65	28	17	13	5	5	44	78	45	42	32	114	285	57	22	58	157	125	91	18	1,474	8,199	18.0%	3		3	0.0%	
Other	0	0	10	19	10	8	1	4	0	2	10	14	11	9	11	30	89	19	5	9	36	48	23	5	373	1,325	28.2%	1		1	0.1%	
Anonymous/Separated	1	1	14	36	16	8	5	3	1	1	3	18	7	8	3	7	16	1	1	13	2	6	1	0	172							
Total	5	43	173	605	326	120	72	65	42	41	227	438	297	248	187	640	2,006	368	107	205	686	783	716	153	8,553	25,116	34.1%	30	2	32	0.1%	

1. Organizational hierarchies are refreshed on the 1st week of the current reporting month.



Detail: COVID-19 Trends by Notable Jobs

(as of 4pm on 8/12/2022)



Notable Jobs	Positives by Month																							Total Positives	Active EEs	% Positives	Active Quarantines Ending within					
	2020				2021												2022										1 Week	2 Weeks	Total	% Quar.		
	Q1	Q2	Q3	Q4	Jan	Feb	Mar	Apr	May	Jun	Jul	Aug	Sep	Oct	Nov	Dec	Jan	Feb	Mar	Apr	May	Jun	Jul								Aug	
Customer Service Reps	1	4	22	42	26	4	5	3	5	2	14	33	18	14	13	34	110	33	9	8	52	52	47	11	562	1,140	49.3%	1		1	0.1%	
Linemen	0	3	3	32	18	9	7	2	5	4	15	30	26	26	8	66	159	18	7	1	24	30	38	10	541	1,029	52.6%	3		3	0.3%	
Gas Service Reps	0	1	9	20	12	10	2	2	1	0	7	10	6	12	6	30	102	18	7	8	31	30	38	3	365	613	59.5%	1	1	2	0.3%	
Troublemakers	0	0	2	7	7	0	1	3	1	1	4	9	7	3	7	10	38	10	4	4	3	10	15	2	148	344	43.0%	1		1	0.3%	
Electric Crew Foreman	0	1	1	8	3	1	1	0	0	0	2	5	8	9	6	15	31	10	0	1	9	6	11	2	130	268	48.5%					
System Operators	0	0	2	7	2	4	0	1	0	1	2	5	10	4	2	5	35	0	0	1	12	8	10	4	115	215	53.5%					
Materials Handlers	0	0	1	3	3	1	0	2	0	0	1	1	3	3	2	3	21	1	0	1	2	9	10	1	68	137	49.6%					
DCPP Nuclear Operators	0	0	1	0	1	0	0	0	0	0	0	2	0	0	1	1	9	1	0	2	0	2	1	0	21	51	41.2%					
Gas System Operators	0	0	0	4	0	0	0	0	0	0	0	0	0	0	0	0	2	0	1	1	1	0	5	0	14	30	46.7%					
Other	3	33	118	445	238	83	51	49	29	32	179	325	212	169	139	469	1,483	276	78	165	552	630	540	120	6,418	21,289	30.1%	24	1	25	0.1%	
Anonymous/Separated	1	1	14	37	16	8	5	3	1	1	3	18	7	8	3	7	16	1	1	13	0	6	1	0	171							
Total	5	43	173	605	326	120	72	65	42	41	227	438	297	248	187	640	2,006	368	107	205	686	783	716	153	8,553	25,116	34.1%	30	2	32	0.1%	

1. Organizational hierarchies are refreshed on the 1st week of the current reporting month.



Detail: COVID-19 Positives by Sub LOB

(as of 4pm on 8/12/2022)

Line of Business	LOB Subgroup	Positives by Month																												Grand Total		
		2020										2021										2022										
		Mar	Apr	May	Jun	Jul	Aug	Sep	Oct	Nov	Dec	Jan	Feb	Mar	Apr	May	Jun	Jul	Aug	Sep	Oct	Nov	Dec	Jan	Feb	Mar	Apr	May	Jun		Jul	Aug
⊖ Electric Operations	EO Electric Distribution Operations				2	7	3		5	9	27	36	11	9	6	3	5	22	50	31	39	23	74	268	41	10	12	57	86	77	20	933
	EO Electric Operations Immediate Office																						2								2	
	EO Electric Quality Mgmt							1	1	2				1						2	2	1	3				2	3	2		20	
	EO Power Generation				1	1	1		1	8	8	7	1	4	3	5	3	4	12	19	7	16	24	85	17	5	3	9	12	23	4	283
	EO Projects & Construction			1	3	4			1	20	17	13	7	2	1	2	3	13	18	23	12	8	48	78	7	8	6	22	26	35	6	384
	EO T&D System Ops				1	4			4	9	13	8	6	4	1	1	2	8	12	14	11	6	23	90	8		5	26	27	24	6	313
	EO Transmission Substation M&C	1			9	8	4		2	11	31	26	5	3	1	7	5	20	33	30	7	15	37	144	21	5	10	37	54	58	8	592
Electric Operations Total		1	1	16	24	8		14	58	98	90	30	22	13	18	18	67	125	119	78	69	206	670	94	28	38	154	207	217	44	2,527	
⊖ Gas Operations	GO Damage Prevention & Compliance			1	3	6		1		3	7	8	3	2	2	1	2	6	13	2	3	5	13	41	10	2	4	21	16	24	2	201
	GO Gas Operations Immediate Office																						1								1	
	GO Gas Pipeline Ops & Maintenance				1	4	1		4	4	19	13	1	1	3	1		11	12	5	8	2	15	58	12	3	4	16	27	33	5	263
	GO Gas T&D Construction				3	6	4	1	4	17	26	22	8	8	7	1	6	25	45	27	36	15	58	181	28	5	14	41	52	53	30	723
	GO Project & Program Mgmt			1				2	2	2	1	1	1	1			1	1	1	1		5	12	5	12	1	3	3	2	1		41
	GO Safety Quality & Qualifications					1						3	1					5	1			2	4	4	3			7	2	2		35
	GO T&D Operations	1	1		2	9	6	4	6	15	32	29	15	5	5	3	1	16	44	24	23	15	77	229	45	14	15	75				711
	GO Gas Distribution Operations																										9	86	71	12		178
Gas Operations Total		1	1	2	9	26	13	6	14	41	86	76	29	17	17	6	9	59	120	60	71	39	173	525	98	25	40	172	185	184	49	2,153
⊖ Customer Care	CC Business Developmnt & Cust Engagement				4	1			5	7	5	1	1	2	1		3	5	4	5		7	19	3	1	2	6	7	5	1	95	
	CC Business Operations				1							1					1	1				2	1		1	1	1	3			13	
	CC Cust Experience & Regulatory Strategy																	1	1									1				3
	CC Customer Ops & Enablement	2	1		5	1			2	8	10		2	3	1		1	11	5	3	2	12	43	8	2		7	19	9		157	
	CC Residential Svc & Digital Channels		1		2	12	5	1	5	13	22	19	6	3	1	4	2	14	26	15	12	11	28	89	29	8	12	52	46	47	11	496
Customer Care Total		2	2	2	22	7	1	5	20	37	35	7	6	6	6	6	2	19	44	25	20	13	49	152	40	12	15	66	76	61	12	764
⊖ Operations - Other					1	3	6	2	1	10	21	16	6	4	3	5	4	9	18	17	14	8	42	134	27	8	19	39	71	46	11	545
⊖ Generation					1	7	2	1		3	11	14	11	3	3	2	3	18	26	10	6	14	28	109	31	4	10	39	70	47	10	483
⊖ Gas Engineering					3	4	2	3	4	7	26	27	6	5	3	2	1	15	24	14	11	12	38	79	26	8	18	42	34	29	8	451
⊖ Electric Engineering				2		4	1	1	1	10	24	13	6		6	2	1	7	22	10	13	3	24	72	13	8	20	54	37	38	5	397
⊖ Shared Services					1	2	1		1	11	15	11	3	2	4		1	10	16	16	9	8	17	87	17	4	9	30	36	33	6	350
⊖ Information Technology				1					1	4	9	7	5	1	3		1	10	8	7	1	7	14	57	6	1	7	37	22	19	6	234
⊖ Supply Chain/Materials					3			1		3	12	10	4	4	3			2	6	4	8	4	17	55	5	2	2	14	20	29	1	209
⊖ Not assigned		1			1	8	1	5	5	11	21	16	8	5	3	1	1	3	18	7	8	3	7	16	1	1	13	1	6	1		172
⊖ Enterprise Health & Safety					1	1				1	3	4	2	1	1			1	5	2	4	3	6	8	2	1		5	5	4		60
⊖ General Counsel and Ethics & Compliance						1				2	4	1		1				1	2	1	2		2	10	5			7	1	2	1	43
⊖ Human Resources & Enterprise Change Ofc					1				2	3	2	1	2									1	5	6	2	1	3	5	4	3		41
⊖ Finance							1		1		1	2		1				1	1	1		1	3	6		2	5	3	2	1		32
⊖ Energy Policy & Procurement												1						1	1	2		1	2	7		2	2	8	2	1		30
⊖ Customer & Comms						1					1							1	1	1	2	1		5				8	3			24
⊖ Corporate Affairs							1											1	1	1	1		4	5	1		3	1	2			21
⊖ Safety & Risk								1		1	1	1	1					2					2	3			1	1				13
⊖ LTD LOB					1	1																										2
⊖ Engineering, Planning & Strategy																							1							1		2
Grand Total		5	5	4	34	107	46	20	50	184	371	326	120	72	65	42	41	227	438	297	248	187	640	2,006	368	107	205	686	783	716	153	8,553

1. Excludes anonymous and separated employees (0 count).
2. Organizational hierarchies are refreshed on the 1st week of the current reporting month.

Internal



Detail: COVID-19 Quarantine Aging by Sub LOB

(as of 4pm on 8/12/2022)

Line of Business	LOB Subgroup	Active Quarantines Ending within			
		1 Week	2 Weeks	2+ Weeks	Total
[-] Electric Operations	EO Electric Distribution Operations	7	0	0	7
	EO Power Generation	2	0	0	2
	EO Projects & Construction	1	0	0	1
	EO Transmission Substation M&C	1	0	0	1
Electric Operations Total		11	0	0	11
[-] Gas Operations	GO Gas Pipeline Ops & Maintenance	1	0	0	1
	GO Gas T&D Construction	5	1	0	6
	GO Gas Distribution Operations	3	1	0	4
Gas Operations Total		9	2	0	11
[+] Operations - Other		3	0	0	3
[+] Shared Services		2	0	0	2
[+] Information Technology		1	0	0	1
[+] Supply Chain/Materials		1	0	0	1
[+] Electric Engineering		1	0	0	1
[+] Customer Care		1	0	0	1
[+] Generation		1	0	0	1
Grand Total		30	2	0	32

1. Organizational hierarchies are refreshed on the 1st week of the current reporting month.
Internal



Weekly Vaccination Attestation by LOB

(as of 4pm on 8/12/2022)

LOB	Vaccinated	Not Vaccinated	Grand Total	% Vaccination
Corporate Affairs	115	82	197	58%
Customer & Comms	96	57	153	63%
Customer Care	717	1,569	2,286	31%
Electric Engineering	855	928	1,783	48%
Electric Operations	1,431	3,994	5,425	26%
Energy Policy & Procurement	184	122	306	60%
Engineering, Planning & Strategy	12	9	21	57%
Enterprise Health & Safety	129	156	285	45%
Finance	180	261	441	41%
Gas Engineering	953	1,216	2,169	44%
Gas Operations	1,275	3,272	4,547	28%
General Counsel and Compliance & Ethics	158	108	266	59%
Generation	927	1,082	2,009	46%
Human Resources & Enterprise Change				
Ofc	141	118	259	54%
Information Technology	665	924	1,589	42%
Office of President & Corporate CEO	1	4	5	20%
OPERATIONS	330	470	800	41%
Shared Services	535	646	1,181	45%
Supply Chain/Materials	273	396	669	41%
Wildfire Risk	380	631	1,011	38%
Grand Total	9,357	16,045	25,402	37%

1. Organizational hierarchies are refreshed on the 1st week of the current reporting month.
Internal



Weekly Vaccination Attestation by Job Group & Job Level

(as of 4pm on 8/12/2022)

Career Track / Job Level	Vaccinated	Not Vaccinated	Grand Total	% Vaccination
ESC	1,854	2,428	4,282	43%
LEADERSHIP-OFFICER	37	15	52	71%
PROFESSIONAL	3,003	3,330	6,333	47%
SEIU	43	137	180	24%
SUPPORT	146	228	374	39%
IBEW	2,572	8,651	11,223	23%
AP Journey - IBEW	1	6	7	14%
Apprentice - IBEW	97	640	737	13%
Apprentice, Entry - IBEW	1	10	11	9%
Entry - IBEW	375	1,620	1,995	19%
Expert - IBEW	1	3	4	25%
Intermediate - IBEW	840	2,545	3,385	25%
Journey - IBEW	720	2,532	3,252	22%
Lead - IBEW	531	1,278	1,809	29%
Senior - IBEW	6	17	23	26%
LEADERSHIP-NON OFFICER	1,702	1,255	2,957	58%
Director	173	79	252	69%
Manager	448	280	728	62%
Senior Director	56	17	73	77%
Senior Manager	156	78	234	67%
Supervisor	869	801	1,670	52%
Not assigned		1	1	0%
(blank)		1	1	0%
Grand Total	9,357	16,045	25,402	37%

Job Group	Vaccinated	Not Vaccinated	Grand Total	% Vaccination
Customer Service Reps	220	955	1,175	19%
DCPP Nuclear Operators	31	23	54	57%
Electric Crew Foreman	36	272	308	12%
Gas Service Rep	164	448	612	27%
Gas System Operators	12	13	25	48%
Linemen	92	1,000	1,092	8%
Materials Handler	41	101	142	29%
System Operators	83	137	220	38%
Troublemens	50	329	379	13%
Grand Total	729	3,278	4,007	18%

1. Organizational hierarchies are refreshed on the 1st week of the current reporting month.
Internal