



PG&E Property for Sale

1535 Bonanza Street, Walnut Creek



Property Details

±4,356 sq. ft. site in downtown Walnut Creek with a customer service office building and parking lot.

Location: Bonanza Street at Commerce Lane, near public transit and the Senator Daniel E. Boatwright I-680 freeway.

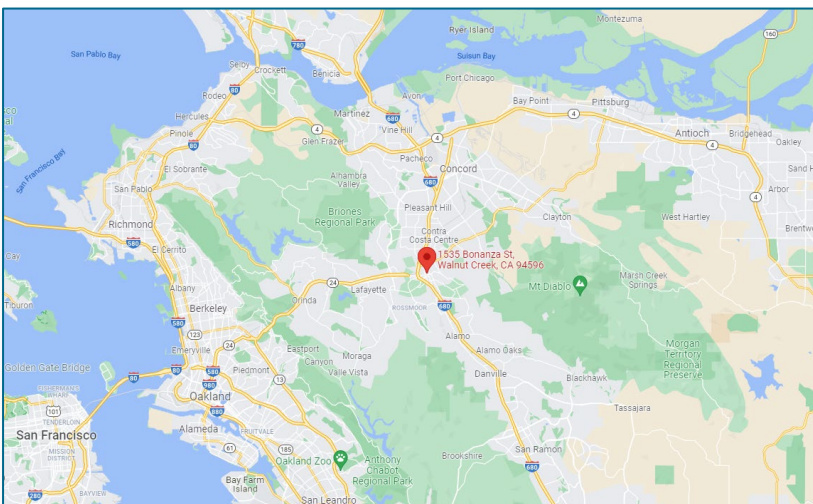
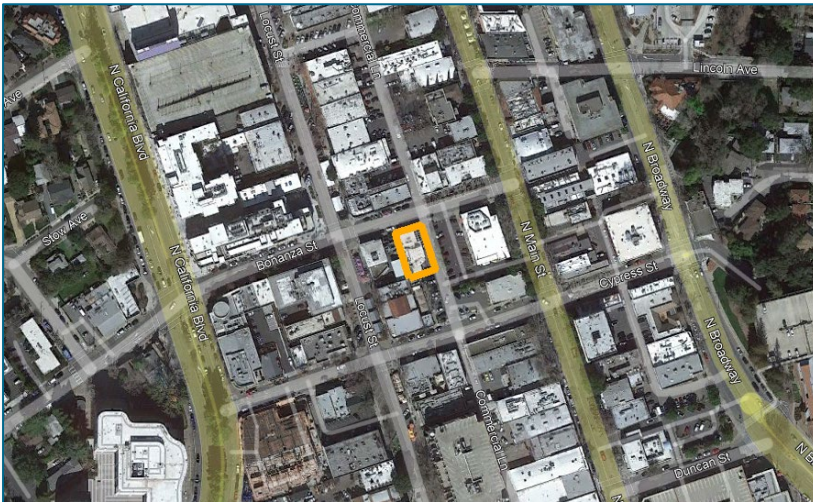
Contra Costa County

APN: 178-172-007

Zoning: P-R (Pedestrian Retail)

General Plan Designation: P-R (Pedestrian Retail)

Description: The one-story office building is ±2,969.95 sq. ft. and the property includes surface parking for 3 vehicles. Prominent visibility on a busy street near public transit and easy access by Interstate 680.



[View on Google Maps](#)

Image Source: Google

Broker Contact:

Robert L. Vance
Senior Vice President

[JLL](#)

1331 N California Blvd #350

Walnut Creek, CA 94596

Main tel: +1 925 944 2140

Direct: +1 925 944 2152

Mobile: +1 925 899 2055

robert.vance@am.jll.com

Contact PG&E at landsales@pge.com

The above information, while not guaranteed, has been secured from sources we believe to be reliable. It may be subject to error, change, or withdrawal. Interested parties should contact PG&E to verify details about the property. Updated May 4, 2022