


Palms and Power Lines

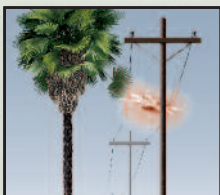
Consider these power line friendly palms when planting near Distribution Lines.

 <p>Height: 20 ft. Zone: 11</p> <p>Golden Cane Palm <i>Chrysalidocarpus lutescens</i></p>	 <p>Height: 25 ft. Zones: 9, 11</p> <p>Wright Palm <i>Acoelorrhaphe wrightii</i></p>	 <p>Height: 20 ft. Zone: 11</p> <p>Key Thatch Palm <i>Thrinax morrisii</i></p>	 <p>Height: 16 ft. Zone: 11</p> <p>Christmas Palm <i>Veitchia merrillii</i></p>	
 <p>Height: 20 ft. Zones: 4-24</p> <p>Mediterranean Fan Palm <i>Chamaerops humilis</i></p>	 <p>Height: 25 ft. Zones: 8-9, 12-24</p> <p>Pindo Palm <i>Butia capitata</i></p>	 <p>Height: 12 ft. Zone: 11</p> <p>MacArthur Palm <i>Ptychosperma macarthurii</i></p>	 <p>Height: 10 ft. Zones: 9-11</p> <p>Pygmy Date Palm <i>Phoenix roebelenii</i></p>	 <p>Height: 10 ft. Zone: 11</p> <p>Florida Silver Palm <i>Coccothrinax argentata</i></p>

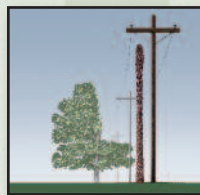
Or consider these palm-like trees

 <p>Height: 20 ft. Zones: 8-9, 14-17, 19-24</p> <p>Tasmanian Tree Fern <i>Dicksonia antarctica</i></p>	 <p>Height: 25 ft. Zones: 16-17, 21-24</p> <p>Dragon Tree <i>Dracaena draco</i></p>
---	---

Palm Tree hazards



Palm fronds are a significant cause of power outages. Sometimes outages are caused blocks away when fronds are carried by high winds.



Palm tree growth cannot be directed away from power lines like other trees. California regulations require all trees to be maintained at a safe distance from the wires.

Palm trees growing below or in close proximity to high voltage lines must eventually be removed to maintain the required safe distance.