



PG&E ENERGY EFFICIENCY PRODUCT REBATES

2018 Business Rebate List

Please refer to the product catalogs for complete rebate eligibility requirements. Business rebate catalogs are available at pge.com/businessrebates.

Program updates

Product updates for new and removed products, changes to rebate amounts, and other key requirement changes.

Rebate amount determination

Rebate code will be given the effective rebate and savings available at the time the application is received (e.g. postmarked or submitted online).

We recommend checking the qualifying products list as close to purchase date as possible.

One year requirement

Applications must be submitted within one year from installation or purchase date, whichever is later.

Qualified products list screenshot requirement

In supporting documentation, please submit a screenshot of the product at the time of selection from the associated qualified products list.



What's new in 2018

Product offerings and rebate amounts are subject to change. Please refer to the product catalogs for complete rebate eligibility requirements. Business rebate catalogs are available at pge.com/businessrebates.

Lighting

Rebate Code	Product Name	Changes
LT043	2x4 LED New Luminaire for Ambient Interior Commercial Spaces \geq 125 LPW	Effective January 1, 2018, rebate will no longer be available
LT047	2x2 LED New Luminaire for Ambient Interior Commercial Spaces \geq 125 LPW	Effective January 1, 2018, rebate will no longer be available
LT051	1x4 LED New Luminaire for Ambient Interior Commercial Spaces \geq 125 LPW	Effective January 1, 2018, rebate will no longer be available
LT055	2x4 LED Integrated Retrofit Kit for Ambient Interior Commercial Spaces \geq 125 LPW	Effective January 1, 2018, rebate will no longer be available
LT059	2x2 LED Integrated Retrofit Kit for Ambient Interior Commercial Spaces \geq 125 LPW	Effective January 1, 2018, rebate will no longer be available
LT063	1x4 LED Integrated Retrofit Kit for Ambient Interior Commercial Spaces \geq 125 LPW	Effective January 1, 2018, rebate will no longer be available
LT148	2x4 LED New Luminaire for Ambient Interior Commercial Spaces LT043 \geq 125 LPW	Effective January 1, 2018, new rebate is \$5/kilolumen (max \$22.50/fixture)
LT149	2x2 LED New Luminaire for Ambient Interior Commercial Spaces \geq 125 LPW	Effective January 1, 2018, new rebate is \$6/kilolumen (max \$27/fixture)
LT150	1x4 LED New Luminaire for Ambient Interior Commercial Spaces \geq 125 LPW	Effective January 1, 2018, new rebate is \$4.25/kilolumen (max \$19.13/fixture)
LT151	2x4 LED Integrated Retrofit Kit for Ambient Interior Commercial Spaces \geq 125 LPW	Effective January 1, 2018, new rebate is \$6/kilolumen (max \$27/fixture)
LT152	2x2 LED Integrated Retrofit Kit for Ambient Interior Commercial Spaces \geq 125 LPW	Effective January 1, 2018, new rebate is \$5/kilolumen (max \$22.50/fixture)
LT153	1x4 LED Integrated Retrofit Kit for Ambient Interior Commercial Spaces \geq 125 LPW	Effective January 1, 2018, new rebate is \$6/kilolumen (max \$27/fixture)
LT154	2x4 LED Integrated Retrofit Kit for Ambient Interior Commercial Spaces \geq 125 LPW and $<$ 140 LPW	Effective January 1, 2018, new rebate is \$5/kilolumen (max \$22.50/fixture)
LT155	2x4 LED Integrated Retrofit Kit for Ambient Interior Commercial Spaces \geq 140 LPW	Effective January 1, 2018, new rebate is \$6/kilolumen (max \$27/fixture)
LT156	2x2 LED Integrated Retrofit Kit for Ambient Interior Commercial Spaces \geq 125 LPW and $<$ 140 LPW	Effective January 1, 2018, new rebate is \$4.25/kilolumen (max \$19.13/fixture)
LT157	2x2 LED Integrated Retrofit Kit for Ambient Interior Commercial Spaces \geq 140 LPW	Effective January 1, 2018, new rebate is \$6/kilolumen (max \$27/fixture)

Lighting (continued)

Rebate Code	Product Name	Changes
LT158	1x4 LED Integrated Retrofit Kit for Ambient Interior Commercial Spaces \geq 125 LPW and $<$ 140 LPW	Effective January 1, 2018, new rebate is \$5/kilolumen (max \$22.50/fixture)
LT159	1x4 LED Integrated Retrofit Kit for Ambient Interior Commercial Spaces \geq 140 LPW	Effective January 1, 2018, new rebate is \$6/kilolumen (max \$27/fixture)
LT007	LED Exterior Area Lighting $>$ 500–750 watt LED Fixture	Effective January 1, 2018, rebate will no longer be available
LT008	LED Exterior Area Lighting $>$ 265–500 watt LED Fixture	Effective January 1, 2018, rebate will no longer be available
LT009	LED Exterior Area Lighting $>$ 225–265 watt LED Fixture	Effective January 1, 2018, rebate will no longer be available
LT010	LED Exterior Area Lighting $>$ 192–225 watt LED Fixture	Effective January 1, 2018, rebate will no longer be available
LT011	LED Exterior Area Lighting $>$ 150–192 watt LED Fixture	Effective January 1, 2018, rebate will no longer be available
LT012	LED Exterior Area Lighting $>$ 110–150 watt LED Fixture	Effective January 1, 2018, rebate will no longer be available
LT013	LED Exterior Area Lighting $>$ 70–110 watt LED Fixture	Effective January 1, 2018, rebate will no longer be available
LT014	LED Exterior Area Lighting $>$ 50–70 watt LED Fixture	Effective January 1, 2018, rebate will no longer be available
LT015	LED Exterior Area Lighting 0–50 watt LED Fixture	Effective January 1, 2018, rebate will no longer be available

Program Update: PG&E is not accepting applications for LED Outdoor Lighting measures LT282 through LT324 after 11:59 p.m., March 31, 2018 until further notice.

LT304*	LED Outdoor Pole/Arm-mounted, Roadway, and Decorative Lighting $>$ 390–571 watt LED Fixture	Effective January 1, 2018, new rebate is \$70/fixture
LT303*	LED Outdoor Pole/Arm-mounted, Roadway, and Decorative Lighting $>$ 235–390 watt LED Fixture	Effective January 1, 2018, new rebate is \$65/fixture
LT302*	LED Outdoor Pole/Arm-mounted, Roadway, and Decorative Lighting $>$ 146–235 watt LED Fixture	Effective January 1, 2018, new rebate is \$60/fixture
LT301*	LED Outdoor Pole/Arm-mounted, Roadway, and Decorative Lighting $>$ 107–146 watt LED Fixture	Effective January 1, 2018, new rebate is \$55/fixture
LT300*	LED Outdoor Pole/Arm-mounted, Roadway, and Decorative Lighting $>$ 90–107 watt LED Fixture	Effective January 1, 2018, new rebate is \$45/fixture
LT299*	LED Outdoor Pole/Arm-mounted, Roadway, and Decorative Lighting $>$ 68–90 watt LED Fixture	Effective January 1, 2018, new rebate is \$40/fixture
LT298*	LED Outdoor Pole/Arm-mounted, Roadway, and Decorative Lighting $>$ 45–68 watt LED Fixture	Effective January 1, 2018, new rebate is \$35/fixture
LT297*	LED Outdoor Pole/Arm-mounted, Roadway, and Decorative Lighting $>$ 29–45 watt LED Fixture	Effective January 1, 2018, new rebate is \$30/fixture
LT296*	LED Outdoor Pole/Arm-mounted, Roadway, and Decorative Lighting 0–29 watt LED Fixture	Effective January 1, 2018, new rebate is \$25/fixture
LT308*	LED Outdoor Parking Garage Lighting $>$ 88–113 watt LED Fixture	Effective January 1, 2018, new rebate is \$30/fixture
LT307*	LED Outdoor Parking Garage Lighting $>$ 56–88 watt LED Fixture	Effective January 1, 2018, new rebate is \$25/fixture
LT306*	LED Outdoor Parking Garage Lighting $>$ 38–56 watt LED Fixture	Effective January 1, 2018, new rebate is \$20/fixture
LT305*	LED Outdoor Parking Garage Lighting 0–38 watt LED Fixture	Effective January 1, 2018, new rebate is \$15/fixture

Lighting (continued)

Rebate Code	Product Name	Changes
LT317*	LED Outdoor Wall-mounted Area Lighting > 337–493 watt LED Fixture	Effective January 1, 2018, new rebate is \$105/fixture
LT316*	LED Outdoor Wall-mounted Area Lighting > 203–337 watt LED Fixture	Effective January 1, 2018, new rebate is \$90/fixture
LT315*	LED Outdoor Wall-mounted Area Lighting > 126–203 watt LED Fixture	Effective January 1, 2018, new rebate is \$70/fixture
LT314*	LED Outdoor Wall-mounted Area Lighting > 97–126 watt LED Fixture	Effective January 1, 2018, new rebate is \$60/fixture
LT313*	LED Outdoor Wall-mounted Area Lighting > 78–97 watt LED Fixture	Effective January 1, 2018, new rebate is \$45/fixture
LT312*	LED Outdoor Wall-mounted Area Lighting > 58–78 watt LED Fixture	Effective January 1, 2018, new rebate is \$40/fixture
LT311*	LED Outdoor Wall-mounted Area Lighting > 39–58 watt LED Fixture	Effective January 1, 2018, new rebate is \$35/fixture
LT310*	LED Outdoor Wall-mounted Area Lighting > 25–39 watt LED Fixture	Effective January 1, 2018, new rebate is \$30/fixture
LT309*	LED Outdoor Wall-mounted Area Lighting 0–25 watt LED Fixture	Effective January 1, 2018, new rebate is \$25/fixture
LT324*	LED Outdoor Fuel Pump Canopy Lighting > 99–153 watt LED Fixture	Effective January 1, 2018, new rebate is \$45/fixture
LT323*	LED Outdoor Fuel Pump Canopy Lighting > 73–99 watt LED Fixture	Effective January 1, 2018, new rebate is \$40/fixture
LT322*	LED Outdoor Fuel Pump Canopy Lighting > 59–73 watt LED Fixture	Effective January 1, 2018, new rebate is \$35/fixture
LT321*	LED Outdoor Fuel Pump Canopy Lighting > 46–59 watt LED Fixture	Effective January 1, 2018, new rebate is \$30/fixture
LT320*	LED Outdoor Fuel Pump Canopy Lighting > 29–46 watt LED Fixture	Effective January 1, 2018, new rebate is \$25/fixture
LT319*	LED Outdoor Fuel Pump Canopy Lighting > 19–29 watt LED Fixture	Effective January 1, 2018, new rebate is \$20/fixture
LT318*	LED Outdoor Fuel Pump Canopy Lighting 0–19 watt LED Fixture	Effective January 1, 2018, new rebate is \$15/fixture

*Applications received must include products in the above qualifying categories and must be listed as DesignLights Consortium (DLC)-premium classification to qualify for these rebates

LT001	> 351–585 watt Linear Fluorescent (HP T8/T5) Fixture	Effective January 1, 2018, rebate will no longer be available
LT002	> 234–351 watt Linear Fluorescent (HP T8/T5) Fixture	Effective January 1, 2018, rebate will no longer be available
LT003	> 144–234 watt Linear Fluorescent (HP T8/T5) Fixture	Effective January 1, 2018, rebate will no longer be available
LT004	> 118–144 watt Linear Fluorescent (HP T8/T5) Fixture	Effective January 1, 2018, rebate will no longer be available
LT005	> 64–118 watt Linear Fluorescent (HP T8/T5) Fixture	Effective January 1, 2018, rebate will no longer be available
LT006	≤ 64 watt Linear Fluorescent (HP T8/T5) Fixture	Effective January 1, 2018, rebate will no longer be available
L730	Low- or Reduced-wattage T8 Lamps, 28 watt replacing 32 watt	Effective January 1, 2018, rebate will no longer be available
L863	Low- or Reduced-wattage T8 Lamps, 25 watt replacing 32 watt	Effective January 1, 2018, rebate will no longer be available

Refrigeration

Rebate Code	Product Name	Changes
RF006	High Efficiency Ultra-Low Temperature (-80 °C) Freezer 15 to < 24 ft ³	Effective October 9, 2017, new rebate is \$300
RF007	High Efficiency Ultra-Low Temperature (-80 °C) Freezer 24 to 29 ft ³	Effective October 9, 2017, new rebate is \$600

Water Heating

Rebate Code	Product Name	Changes
HA58	ENERGY STAR® High-Efficiency Gas Storage Water Heater, Uniform Energy Factor (UEF) of 0.64 or greater and/or Energy Factor (EF) of 0.67 or greater	Effective January 1, 2018, new measure requirements will apply
AP067	Modulating gas valve for on-site natural gas commercial dryers	Effective January 1, 2018, new rebate is \$350/unit
H13	2" Tank Insulation, Low Temp. Solution (120 °F–170 °F)	Effective January 1, 2018, new rebate is \$4/sq. ft.
HA47	ENERGY STAR Electric Heat Pump Storage Water Heater EF of 2.0 or greater	Effective January 1, 2018, rebate will no longer be available

Food Service

Rebate Code	Product Name	Changes
F200	Commercial Ice Machine, 101–300 lbs/day	Effective January 1, 2018, rebate will no longer be available
F201	Commercial Ice Machine, 301–500 lbs/day	Effective January 1, 2018, rebate will no longer be available
F202	Commercial Ice Machine, 501–1,000 lbs/day	Effective January 1, 2018, rebate will no longer be available
F203	Commercial Ice Machine, 1,001–1,500 lbs/day	Effective January 1, 2018, rebate will no longer be available
F204	Commercial Ice Machine, > 1,500 lbs/day	Effective January 1, 2018, rebate will no longer be available
FS014	Commercial Ice Machine, SCU < 110 lbs/day	Effective January 1, 2018, new rebate is \$50/unit
FS015	Commercial Ice Machine, SCU 110–200 lbs/day	Effective January 1, 2018, new rebate is \$75/unit
FS016	Commercial Ice Machine, SCU > 200 lbs/day	Effective January 1, 2018, new rebate is \$100/unit
FS017	Commercial Ice Machine, IMH < 300 lbs/day	Effective January 1, 2018, new rebate is \$75/unit
FS018	Commercial Ice Machine, IMH 300–800 lbs/day	Effective January 1, 2018, new rebate is \$125/unit
FS019	Commercial Ice Machine, IMH 801–1,500 lbs/day	Effective January 1, 2018, new rebate is \$200/unit
FS020	Commercial Ice Machine, IMH >1,500 lbs/day	Effective January 1, 2018, new rebate is \$300/unit
FS021	Commercial Ice Machine, RCU < 988 lbs/day	Effective January 1, 2018, new rebate is \$200/unit
FS022	Commercial Ice Machine, RCU ≥ 988 lbs/day	Effective January 1, 2018, new rebate is \$300/unit

Heavy Industrial

Rebate Code	Product Name	Changes
PR002	VFD for Process Fan or Blower Motor, horsepower rating ≥ 7.5 hp to ≤ 75 hp	Effective January 1, 2018, rebate will no longer be available

Agriculture and Food Processing

Rebate Code	Product Name	Changes
IR006	Well Pumps—Variable Frequency Drive, Retrofit and New Construction only (≤ 300 hp)	Effective January 1, 2018, new rebate is \$20/hp/motor (max \$6,000) and new measure requirements will apply
IR007	Booster Pumps—Variable Frequency Drive, Retrofit and New Construction only (≤ 150 hp)	Effective January 1, 2018, new rebate is \$20/hp/motor (max \$3,000) and new measure requirements will apply
IR010	Well Pumps—Variable Frequency Drive, Retrofit and New Construction only (≤ 600 hp) that comply with Specifications for PG&E Agricultural Pumping VFD Incentive Program, as prepared by California Polytechnic University, San Luis Obispo, dated 7/31/2017	Effective January 1, 2018, rebate will no longer be available
IR011	Booster Pumps—Variable Frequency Drive, Retrofit and New Construction only (≤ 150 hp) that comply with Specifications for PG&E Agricultural Pumping VFD Incentive Program, as prepared by California Polytechnic University, San Luis Obispo, dated 7/31/2017	Effective January 1, 2018, rebate will no longer be available
IR012	Well Pumps (LTE 75hp) VFD—Enhanced Specifications, Retrofit and New Construction	Effective January 1, 2018, new rebate is \$60/hp/motor (max \$6,500) and new measure requirements will apply. In addition to the \$60/hp incentive, this measure includes a \$2,000 bonus incentive.
IR013	Booster Pumps (LTE 75hp) VFD—Enhanced Specifications, Retrofit and New Construction	Effective January 1, 2018, new rebate is \$60/hp/motor (max \$6,500) and new measure requirements will apply. In addition to the \$60/hp incentive, this measure includes a \$2,000 bonus incentive.
IR014	Well Pumps (GT 75hp to LTE 600hp) VFD—Enhanced Specifications, Retrofit and New Construction	Effective January 1, 2018, new rebate is \$60/hp/motor (max \$36,000) and new measure requirements will apply
IR015	Booster Pumps (GT 75hp to LTE 150hp) VFD—Enhanced Specifications, Retrofit and New Construction	Effective January 1, 2018, new rebate is \$60/hp/motor (max \$9,000) and new measure requirements will apply
H207	Agricultural Ventilation Fans or Box Fans 24"–26" Retrofit	Effective January 1, 2018, new rebate is \$150 each (min. cfm/W 14.0)
H208	Agricultural Ventilation Fans or Box Fans 36" Retrofit	Effective January 1, 2018, new rebate is \$200 each (min. cfm/W 20.4)
H209	Agricultural Ventilation Fans or Box Fans 48" Retrofit	Effective January 1, 2018, new rebate is \$130 each (min. cfm/W 21.9)

Please refer to the product catalogs for complete rebate eligibility requirements.

Lighting

LED Troffers and Integrated Troffer Retrofit Kits

2x4 LED New Luminaire for Ambient Interior Commercial Spaces*

Rebate Code	Description	Rebate/Unit Measure
LT148	≥ 125 LPW and < 140 LPW	\$5/kilolumen (max \$22.50/fixture)
LT149	≥ 140 LPW	\$6/kilolumen (max \$27/fixture)

2x2 LED New Luminaire for Ambient Interior Commercial Spaces*

Rebate Code	Description	Rebate/Unit Measure
LT150	≥ 125 LPW and < 140 LPW	\$4.25/kilolumen (max \$19.13/fixture)
LT151	≥ 140 LPW	\$6/kilolumen (max \$27/fixture)

1x4 LED New Luminaire for Ambient Interior Commercial Spaces*

Rebate Code	Description	Rebate/Unit Measure
LT152	≥ 125 LPW and < 140 LPW	\$5/kilolumen (max \$22.50 /fixture)
LT153	≥ 140 LPW	\$6/kilolumen (max \$27/fixture)

2x4 LED Integrated Retrofit Kit for Ambient Interior Commercial Spaces*

Rebate Code	Description	Rebate/Unit Measure
LT154	≥ 125 LPW and < 140 LPW	\$5/kilolumen (max \$22.50/fixture)
LT155	≥ 140 LPW	\$6/kilolumen (max \$27/fixture)

2x2 LED Integrated Retrofit Kit for Ambient Interior Commercial Spaces*

Rebate Code	Description	Rebate/Unit Measure
LT156	≥ 125 LPW and < 140 LPW	\$4.25/kilolumen (max \$19.13/fixture)
LT157	≥ 140 LPW	\$6/kilolumen (max \$27/fixture)

1x4 LED Integrated Retrofit Kit for Ambient Interior Commercial Spaces*

Rebate Code	Description	Rebate/Unit Measure
LT158	≥ 125 LPW and < 140 LPW	\$5/kilolumen (max \$22.50/fixture)
LT159	≥ 140 LPW	\$6/kilolumen (max \$27/fixture)

*All LED Troffer and Integrated Troffer Retrofit Kit rebates are capped at 4.5 kilolumens per fixture



Interior LED High-Bay and Low-Bay Lighting

LED high- and low-bay fixtures, minor retrofits with < 70 fixtures

Rebate Code	Description	Rebate/Unit Measure
LD101	40–131 watt	\$25/fixture
LD102	> 131–160 watt	\$30/fixture
LD103	> 160–187 watt	\$55/fixture
LD104	> 187–220 watt	\$75/fixture

LED high- and low-bay fixtures, all retrofits

Rebate Code	Description	Rebate/Unit Measure
LD105	> 220–262 watt	\$90/fixture
LD106	> 262–280 watt	\$115/fixture
LD107	> 280–320 watt	\$140/fixture
LD108	> 320–500 watt	\$170/fixture
LD109	> 500–750 watt	\$250/fixture

LED high- and low-bay fixtures, major retrofits with \geq 70 fixtures

Rebate Code	Description	Rebate/Unit Measure
LD111	40–131 watt	\$25/fixture
LD112	> 131–160 watt	\$30/fixture
LD113	> 160–220 watt	\$55/fixture



LED Outdoor Area Lighting

Program Update: PG&E is not accepting applications for LED Outdoor Lighting measures LT282 through LT324 after 11:59 p.m., March 31, 2018 until further notice.

LED Outdoor Pole/Arm-mounted Area, Roadway, and Decorative Lighting*

Rebate Code	Description	Rebate/Unit Measure
LT304	Install > 390–571 watt LED Fixture	\$70/fixture
LT303	Install > 235–390 watt LED Fixture	\$65/fixture
LT302	Install > 146–235 watt LED Fixture	\$60/fixture
LT301	Install > 107–146 watt LED Fixture	\$55/fixture
LT300	Install > 90–107 watt LED Fixture	\$45/fixture
LT299	Install > 68–90 watt LED Fixture	\$40/fixture
LT298	Install > 45–68 watt LED Fixture	\$35/fixture
LT297	Install > 29–45 watt LED Fixture	\$30/fixture
LT296	Install 0–29 watt LED Fixture	\$25/fixture

LED Outdoor Parking Garage Lighting*

Rebate Code	Description	Rebate/Unit Measure
LT308	Install > 88–113 watt LED Fixture	\$30/fixture
LT307	Install > 56–88 watt LED Fixture	\$25/fixture
LT306	Install > 38–56 watt LED Fixture	\$20/fixture
LT305	Install 0–38 watt LED Fixture	\$15/fixture

LED Outdoor Wall-mounted Area Lighting*

Rebate Code	Description	Rebate/Unit Measure
LT317	Install > 337–493 watt LED Fixture	\$105/fixture
LT316	Install > 203–337 watt LED Fixture	\$90/fixture
LT315	Install > 126–203 watt LED Fixture	\$70/fixture
LT314	Install > 97–126 watt LED Fixture	\$60/fixture
LT313	Install > 78–97 watt LED Fixture	\$45/fixture
LT312	Install > 58–78 watt LED Fixture	\$40/fixture
LT311	Install > 39–58 watt LED Fixture	\$35/fixture
LT310	Install > 25–39 watt LED Fixture	\$30/fixture
LT309	Install 0–25 watt LED Fixture	\$25/fixture

LED Outdoor Fuel Pump Canopy Lighting*

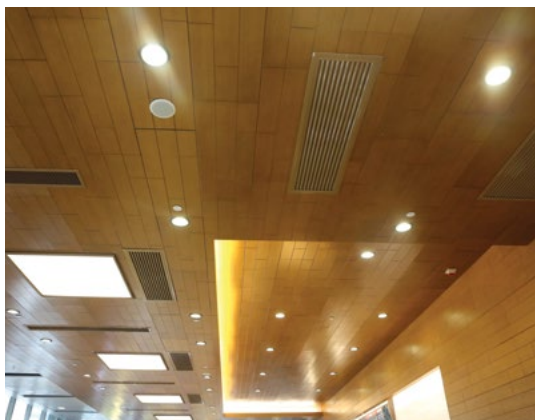
Rebate Code	Description	Rebate/Unit Measure
LT324	Install > 99–153 watt LED Fixture	\$45/fixture
LT323	Install > 73–99 watt LED Fixture	\$40/fixture
LT322	Install > 59–73 watt LED Fixture	\$35/fixture
LT321	Install > 46–59 watt LED Fixture	\$30/fixture
LT320	Install > 29–46 watt LED Fixture	\$25/fixture
LT319	Install > 19–29 watt LED Fixture	\$20/fixture
LT318	Install 0–19 watt LED Fixture	\$15/fixture

*Applications received must include products in the above qualifying categories and must be listed as DesignLights Consortium (DLC)-premium classification to qualify for these rebates.

LED Accent, Surface, Pendant, Track and Recessed Downlight Fixtures

LED Accent and Directional Lighting Fixtures

Rebate Code	Description	Rebate/Unit Measure
LD146	≥ 25 watt LED Fixture	\$15.50/fixture
LD145	24 to < 25 watt LED Fixture	\$15.50/fixture
LD144	23 to < 24 watt LED Fixture	\$15.50/fixture
LD143	22 to < 23 watt LED Fixture	\$15.50/fixture
LD142	21 to < 22 watt LED Fixture	\$15.50/fixture
LD141	20 to < 21 watt LED Fixture	\$15.50/fixture
LD140	19 to < 20 watt LED Fixture	\$15.50/fixture
LD139	18 to < 19 watt LED Fixture	\$15.50/fixture
LD138	17 to < 18 watt LED Fixture	\$13/fixture
LD137	16 to < 17 watt LED Fixture	\$13/fixture
LD136	15 to < 16 watt LED Fixture	\$13/fixture
LD135	14 to < 15 watt LED Fixture	\$13/fixture
LD134	13 to < 14 watt LED Fixture	\$13/fixture
LD133	12 to < 13 watt LED Fixture	\$13/fixture
LD132	11 to < 12 watt LED Fixture	\$11/fixture
LD131	10 to < 11 watt LED Fixture	\$11/fixture
LD130	9 to < 10 watt LED Fixture	\$11/fixture
LD129	8 to < 9 watt LED Fixture	\$8/fixture
LD128	7 to < 8 watt LED Fixture	\$8/fixture
LD127	< 7 watt LED Fixture	\$8/fixture





Refrigeration

Ultra-Low Temperature (ULT) Freezers

Rebate Code	Description	Rebate/Unit Measure
RF006	High Efficiency Ultra-Low Temperature (-80 °C) Freezer 15 to < 24 ft ³	\$300
RF007	High Efficiency Ultra-Low Temperature (-80 °C) Freezer 24 to 29 ft ³	\$600

Anti-Sweat Heater (ASH) Controls

Rebate Code	Description	Rebate/Unit Measure
R7	Anti-Sweat Heater (ASH) Controls (Medium Temperature)	\$25/linear ft.
HB31	Anti-Sweat Heater (ASH) Controls (Low Temperature)	\$25/linear ft.

Efficient Evaporator Fan Motors

Rebate Code	Description	Rebate/Unit Measure
R145	Efficient ECM Evaporator Fan Motor Medium-Temperature Display Case	\$35/motor
R176	Efficient ECM Evaporator Fan Motor Low-Temperature Display Case	\$50/motor
RF004	Efficient ECM Evaporator Fan Motor Walk-in Cooler	\$75/motor
RF005	Efficient ECM Evaporator Fan Motor Walk-in Freezer	\$75/motor

Auto-Closers for Walk-in Cooler or Freezer Doors

Rebate Code	Description	Rebate/Unit Measure
R79	Auto-Closers for Walk-in Cooler Doors	\$75/closer
R80	Auto-Closers for Walk-in Freezer Doors	\$75/closer

Refrigeration (continued)

Evaporator Fan Controllers for Walk-in Coolers and Freezers

Rebate Code	Description	Rebate/Unit Measure
R53	Evaporator Fan Controllers for Walk-in Coolers and Freezers	\$75/controller

New High-Efficiency Refrigeration Display Cases with Special Doors (Low Temperature)

Rebate Code	Description	Rebate/Unit Measure
R87	New High-Efficiency Refrigeration Display Cases with Special Doors Low Temperature	\$75/linear ft.

New Display Cases to Replace Open Multi-Deck Refrigerated Displays (Low and Medium Temperature)

Rebate Code	Description	Rebate/Unit Measure
R4	New Display Cases to Replace Open Multi-Deck Refrigerated Displays Low Temperature	\$175/linear ft.
R5	New Display Cases to Replace Open Multi-Deck Refrigerated Displays Medium Temperature	\$75/linear ft.

Vending Machine Controllers

Rebate Code	Description	Rebate/Unit Measure
R86	Vending Machine Controller (Cooled)	\$100/controller



Water Heating and Laundry Equipment

ENERGY STAR® High-Efficiency Gas Storage Water Heaters

Rebate Code	Description	Rebate/ Unit Measure
HA58	ENERGY STAR High-Efficiency Gas Storage Water Heater Uniform Energy Factor (UEF) of 0.64 or greater and/or Energy Factor (EF) of 0.67 or greater	\$125/unit

Ozone Laundry System

Rebate Code	Description	Rebate/Unit Measure
B85	Ozone Laundry System	\$39/lb washing machine capacity that is connected to the ozone laundry system

Modulating Gas Valve for Commercial Dryers

Rebate Code	Description	Rebate/Unit Measure
AP067	Modulating gas valve for on-site natural gas commercial dryers	\$350/unit

Commercial Pool and Spa Heaters

Rebate Code	Description	Rebate/Unit Measure
H103	Commercial Pool and Spa Heater	\$2/MBtuh

Pipe Insulation

Rebate Code	Description	Rebate/Unit Measure
H664	Pipe Insulation (1" thick), installed on hot water pipes with a diameter between 0.5" and < 1", which are connected to gas-fired equipment	\$2/linear ft.
H665	Pipe Insulation (1" thick), installed on hot water pipes with a diameter ≥ 1", which are connected to gas-fired equipment	\$2/linear ft.
H666	Pipe Insulation (1" thick), installed on low-pressure steam pipes (< 15 PSIG) with a diameter between 0.5" and < 1", which are connected to gas-fired equipment	\$3/linear ft.
H667	Pipe Insulation (1" thick), installed on low-pressure steam pipes (< 15 PSIG) with a diameter ≥ 1", which are connected to gas-fired equipment	\$3/linear ft.
H668	Pipe Insulation (1" thick), installed on high-pressure steam pipes (≥ 15 PSIG) with a diameter between 0.5" and < 1", which are connected to gas-fired equipment	\$3/linear ft.
H669	Pipe Insulation (1" thick), installed on high-pressure steam pipes (≥ 15 PSIG) with a diameter ≥ 1", which are connected to gas-fired equipment	\$3/linear ft.

Tank Insulation

Rebate Code	Description	Rebate/Unit Measure
H115	1" Tank Insulation, Low Temp. Solution (120 °F–170 °F)	\$2/sq. ft.
H13	2" Tank Insulation, Low Temp. Solution (120 °F–170 °F)	\$4/sq. ft.
H114	1" Tank Insulation, High Temp. Solution (170 °F–200 °F)	\$3/sq. ft.
H18	2" Tank Insulation, High Temp. Solution (170 °F–200 °F)	\$4/sq. ft.



Food Service

Commercial Combination Ovens/Steamers (Electric)

Rebate Code	Description	Rebate/Unit Measure
HA16	Commercial Combination Oven/Steamer Electric (< 15 pans)	\$1,000/unit
F100	Commercial Combination Oven/Steamer Electric (15-28 pans)	\$1,000/unit
HA19	Commercial Combination Oven/Steamer Electric (> 28 pans)	\$4,000/unit

Commercial Combination Ovens/Steamers (Natural Gas)

Rebate Code	Description	Rebate/Unit Measure
HA48	Commercial Combination Oven/Steamer Natural Gas (< 15 pans)	\$700/unit
F101	Commercial Combination Oven/Steamer Natural Gas (15-28 pans)	\$1,000/unit
HA49	Commercial Combination Oven/Steamer Natural Gas (> 28 pans)	\$2,000/unit

Commercial Convection Ovens (Electric)

Rebate Code	Description	Rebate/Unit Measure
F187	Commercial Convection Oven Electric	\$350/oven

Commercial Convection Ovens (Natural Gas)

Rebate Code	Description	Rebate/Unit Measure
F188	Commercial Convection Oven Natural Gas	\$500/oven

Food Service (continued)

Commercial Conveyor Ovens (Natural Gas)

Rebate Code	Description	Rebate/Unit Measure
F208	Commercial Conveyor Oven Natural Gas	\$500/oven deck

Commercial Rack Ovens (Natural Gas)

Rebate Code	Description	Rebate/Unit Measure
F207	Commercial Rack Oven Natural Gas	\$2,000/oven

Commercial Fryers (Electric)

Rebate Code	Description	Rebate/Unit Measure
F205	Commercial Fryer Electric	\$650/vat

Commercial Fryers (Natural Gas)

Rebate Code	Description	Rebate/Unit Measure
F206	Commercial Fryer Natural Gas	\$749/vat

Commercial Griddles (Electric)

Rebate Code	Description	Rebate/Unit Measure
FS002	Commercial Griddle Electric	\$150/linear ft.

Commercial Griddles (Natural Gas)

Rebate Code	Description	Rebate/Unit Measure
FS003	Commercial Griddle Natural Gas	\$100/linear ft.

Commercial Steam Cookers (Electric)

Rebate Code	Description	Rebate/Unit Measure
F108	Commercial Steam Cooker Electric	\$1,250/steamer compartment

Commercial Steam Cookers (Natural Gas)

Rebate Code	Description	Rebate/Unit Measure
F109	Commercial Steam Cooker Natural Gas	\$2,000/steamer compartment

Food Service (continued)

Low Flow Pre-Rinse Spray Valves (Natural Gas)

Rebate Code	Description	Rebate/Unit Measure
FS001	Low Flow Pre-Rinse Spray Valve Natural Gas	\$35/valve

Single Tank Door-Type Commercial Dishwasher

Rebate Code	Description	Rebate/Unit Measure
FS005	Single Tank Door-Type Commercial Dishwasher	\$600/unit

On-Demand Hand Wrap Machine

Rebate Code	Description	Rebate/Unit Measure
FS009	On-Demand Hand Wrap Machine	\$125/unit

Insulated Holding Cabinets

Rebate Code	Description	Rebate/Unit Measure
F110	Insulated Holding Cabinet Full Size	\$750/unit
F111	Insulated Holding Cabinet Half Size	\$200/unit

Commercial Glass Door Refrigerators

Rebate Code	Description	Rebate/Unit Measure
F171	Commercial Glass Door Refrigerator Internal volume less than 15 ft ³	\$40/unit
F172	Commercial Glass Door Refrigerator Internal volume 15 ft ³ –29.9 ft ³	\$60/unit
F173	Commercial Glass Door Refrigerator Internal volume 30 ft ³ –49.9 ft ³	\$80/unit
F174	Commercial Glass Door Refrigerator Internal volume 50 ft ³ or greater	\$100/unit

ft³ equals cubic feet

Commercial Solid Door Refrigerators

Rebate Code	Description	Rebate/Unit Measure
F183	Commercial Solid Door Refrigerator Internal volume less than 15 ft ³	\$45/unit
F184	Commercial Solid Door Refrigerator Internal volume 15 ft ³ –29.9 ft ³	\$60/unit
F185	Commercial Solid Door Refrigerator Internal volume 30 ft ³ –49.9 ft ³	\$85/unit
F186	Commercial Solid Door Refrigerator Internal volume 50 ft ³ or greater	\$120/unit

ft³ equals cubic feet

Food Service (continued)

Commercial Solid Door Freezers

Rebate Code	Description	Rebate/Unit Measure
F179	Commercial Solid Door Freezer Internal volume less than 15 ft ³	\$75/unit
F180	Commercial Solid Door Freezer Internal volume 15 ft ³ –29.9 ft ³	\$100/unit
F181	Commercial Solid Door Freezer Internal volume 30 ft ³ –49.9 ft ³	\$160/unit
F182	Commercial Solid Door Freezer Internal volume 50 ft ³ or greater	\$350/unit

ft³ equals cubic feet

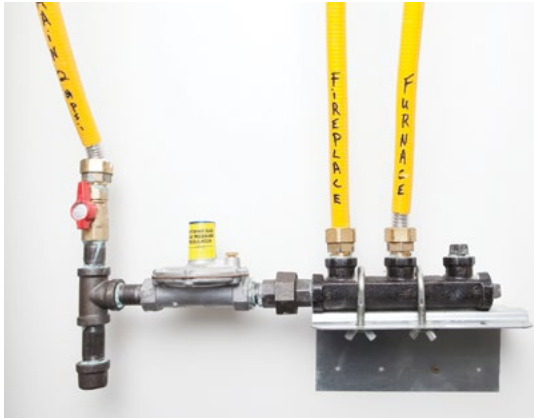
Commercial Ice Machines

Rebate Code	Description	Rebate/Unit Measure
FS014	Commercial Ice Machine SCU < 110 lbs/day	\$50/unit
FS015	Commercial Ice Machine SCU 110–200 lbs/day	\$75/unit
FS016	Commercial Ice Machine SCU > 200 lbs/day	\$100/unit
FS017	Commercial Ice Machine IMH < 300 lbs/day	\$75/unit
FS018	Commercial Ice Machine IMH 300–800 lbs/day	\$125/unit
FS019	Commercial Ice Machine IMH 801–1500 lbs/day	\$200/unit
FS020	Commercial Ice Machine IMH >1500 lbs/day	\$300/unit
FS021	Commercial Ice Machine RCU < 988 lbs/day	\$200/unit
FS022	Commercial Ice Machine RCU ≥ 988 lbs/day	\$300/unit

Demand Control Kitchen Ventilation

Rebate Code	Description	Rebate/Unit Measure
F150	Demand Control Kitchen Ventilation Electric	\$500/exhaust fan hp*

*horsepower (hp)



Heating, Ventilation and Air Conditioning

Central Natural Gas Furnaces

Rebate Code	Description	Rebate/Unit Measure
SA17	Central Natural Gas Furnace 95–96.9% AFUE without VSM	\$150/unit
SA19	Central Natural Gas Furnace ≥ 97% AFUE without VSM	\$250/unit

Central Natural Gas Furnaces with Built-in Variable-Speed Motors (VSM)

Rebate Code	Description	Rebate/Unit Measure
SA16	Central Natural Gas Furnace 95–96.9% AFUE with VSM	\$200/unit
SA18	Central Natural Gas Furnace ≥ 97% AFUE with VSM	\$300/unit

Replacement Multiple-Speed Brushless Permanent Magnet Blower Motors

Rebate Code	Description	Rebate/Unit Measure
H182	Replacement Multiple-Speed Brushless Permanent Magnet Blower CZ restrictions apply	\$50/unit

Variable Frequency Drives (VFD) for HVAC Fans

Rebate Code	Description	Rebate/Unit Measure
H148	Variable Frequency Drive for HVAC Fan	\$80/hp

Heating, Ventilation and Air Conditioning (continued)

Notched V-Belts Replacing Solid V-Belts

Rebate Code	Description	Rebate/Unit Measure
SA13	HVAC Fans Cogged V-Belt Replacement for Gas Packs	\$0.35/ton (max \$30/motor)
SA14	HVAC Fans Cogged V-Belt Replacement for Heat Pumps	\$0.35/ton (max \$30/motor)
SA15	HVAC Fans Cogged V-Belt Replacement for Unitary AC Only	\$0.35/ton (max \$30/motor)

Advanced Digital Economizer Control (ADEC) Systems for Packaged HVAC Units

Measure	Packaged HVAC Unit Type	Eligible Building Types
HV294	Advanced Digital Economizer Controller (ADEC) on Gas Pack Unit	\$20/ton (max \$300)
HV295	Advanced Digital Economizer Controller (ADEC) on AC Unit	\$20/ton (max \$300)
HV296	Advanced Digital Economizer Controller (ADEC) on Heat Pump Unit	\$20/ton (max \$300)
HV297	Advanced Digital Economizer Controller (ADEC) on Variable Air Volume Unit	\$20/ton (max \$300)

Demand Controlled Ventilation (DCV) for Packaged HVAC Units

Measure	Packaged HVAC Unit Type	Eligible Building Types
HV027	Add CO ₂ Sensor to Packaged HVAC Gas Pack Unit with Existing ADEC	\$40/ton (max \$600)
HV031	Add CO ₂ Sensor to Heat Pump Unit with Existing ADEC	\$40/ton (max \$600)
HV029	Add CO ₂ Sensor to Packaged HVAC AC Unit with Existing ADEC	\$40/ton (max \$600)
HV026	Add Demand Controlled Ventilation (ADEC and CO ₂ Sensor) to Packaged HVAC Gas Pack Unit	\$100/ton (max \$1,500)
HV030	Add Demand Controlled Ventilation (ADEC and CO ₂ Sensor) to Heat Pump Unit	\$100/ton (max \$1,500)
HV028	Add Demand Controlled Ventilation (ADEC and CO ₂ Sensor) to Packaged AC Unit	\$100/ton (max \$1,500)

Enhanced Ventilation Control (EVC) for Packaged HVAC Units

Measure	Packaged HVAC Unit Type	Eligible Building Types
SA07	Add Enhanced Ventilation Control (ADEC + CO ₂ Sensor + VFD) to Gas Pack Unit	\$155/ton (max \$3,875)
SA10	Add Enhanced Ventilation Control (ADEC + CO ₂ Sensor + VFD) to Heat Pump Unit	\$155/ton (max \$3,875)
SA08	Add Enhanced Ventilation Control (ADEC + CO ₂ Sensor + VFD) + NEMA Premium Motor to Gas Pack Unit	\$190/ton (max \$4,750)
SA11	Add Enhanced Ventilation Control (ADEC + CO ₂ Sensor + VFD) + NEMA Premium Motor to Heat Pump Unit	\$190/ton (max \$4,750)
SA09	Add Enhanced Ventilation Control (ADEC + CO ₂ Sensor + VFD) + Permanent Magnetic Motor to Gas Pack Unit	\$194/ton (max \$4,850)
SA12	Add Enhanced Ventilation Control (ADEC + CO ₂ Sensor + VFD) + Permanent Magnetic Motor to Heat Pump Unit	\$194/ton (max \$4,850)

Agriculture and Food Processing

Sprinkler-to-Drip Irrigation

Rebate Code	Description	Rebate/Unit Measure
A266	Sprinkler-to-Drip Irrigation Field Vegetables	\$44/acre

Agricultural Irrigation Pump Overhaul (≤ 25 hp)

Rebate Code	Description	Rebate/Unit Measure
IR001	Centrifugal Booster Pump System Overhaul (≤ 25 hp)	\$75/hp
IR002	Submersible Well Pump System Overhaul (≤ 25 hp)	\$75/hp
IR003	Submersible Booster Pump System Overhaul (≤ 25 hp)	\$75/hp
IR004	Turbine Booster Pump System Overhaul (≤ 25 hp)	\$75/hp
IR005	Turbine Well Pump System Overhaul (≤ 25 hp)	\$75/hp

Agricultural Irrigation Pump Variable Frequency Drive (VFD)

Rebate Code	Description	Rebate/Unit Measure
IR006	Well Pumps—Variable Frequency Drive, Retrofit and New Construction only (≤ 300 hp)	\$20/hp/motor (max \$6,000)
IR007	Booster Pumps—Variable Frequency Drive, Retrofit and New Construction only (≤ 150 hp)	\$20/hp/motor (max \$3,000)
IR012	Well Pumps (LTE 75hp) VFD—Enhanced Specifications, Retrofit, and New Construction	\$60/hp/motor (max \$6,500)*
IR013	Booster Pumps (LTE 75hp) VFD—Enhanced Specifications, Retrofit, and New Construction	\$60/hp/motor (max \$6,500)*
IR014	Well Pumps (GT 75hp to LTE 600hp) VFD—Enhanced Specifications, Retrofit and New Construction	\$60/hp/motor (max \$36,000)
IR015	Booster Pumps (GT 75hp to LTE 150hp) VFD—Enhanced Specifications, Retrofit and New Construction	\$60/hp/motor (max \$9,000)

*In addition to the \$60/hp incentive, this measure includes a \$2,000 bonus incentive.

Agricultural Ventilation Fans

Rebate Code	Description	Rebate/Unit Measure
H207	Ventilation Fans or Box Fans 24"–26" Retrofit	\$150 each (min. cfm/W 14.0)
H208	Ventilation Fans or Box Fans 36" Retrofit	\$200 each (min. cfm/W 20.4)
H209	Ventilation Fans or Box Fans 48" Retrofit	\$130 each (min. cfm/W 21.9)

More ways for your business to save money

To find the latest rebate information and catalogs or to apply for rebates online, visit pge.com/businessrebates.

PG&E offers a wide range of tools and resources that can help your business save energy and money while helping the environment:

- Didn't find a rebate matching the high-efficiency equipment you'd like to install? You may still be eligible for financial support with PG&E's Calculated Incentive for businesses. To learn more, visit pge.com/cr.
- Sign up for automated benchmarking service at pge.com/benchmarking, which allows you to use the ENERGY STAR® Portfolio Manager to track and compare your facility's energy performance over time.
- Use PG&E's audit tools to identify options for saving energy and money at your facility, and get started on developing a comprehensive energy management plan. Visit the Business Energy Checkup at pge.com/waystosave.
- Find out how you can earn incentives for large custom projects, including equipment upgrades and retrocommissioning with PG&E's Calculated Incentives Program pge.com/customized and pge.com/rcx.
- Explore PG&E's demand response programs, which offer incentives for managing your energy use during times of peak demand at pge.com/demandresponse.
- Check out PG&E's third-party programs at pge.com/thirdparty. These programs are managed by energy-efficiency specialists and offer a range of services to provide you with industry-specific, energy-saving solutions—from dairies and wineries to food processors.
- Use PG&E's Savings By Design or Customized New Construction programs to build in energy efficiency from the ground up and earn incentives at the same time. To get started, visit pge.com/savingsbydesign.
- Go to the Agriculture and Food Processing section of PG&E's website at pge.com/ag to learn about loans and grants that focus on food, agribusiness, alternative energy and environmental programs or call our **Agricultural Customer Service Center** at [1-877-311-FARM \(3276\)](tel:1-877-311-FARM).
- If you are considering generating your own electricity, talk to your PG&E account representative about incentives for solar, wind and fuel cell self-generation equipment.

You also may learn more about these programs, tools and offers by contacting your local PG&E account representative or by calling our **Business Customer Service Center** at [1-800-468-4743](tel:1-800-468-4743).

Ready to get started with your next project and need the help of a contractor? Find local vendors who participate in PG&E's energy-efficiency rebate programs for your business at pge.com/tradeprodirectory.



Together, Building
a Better California