

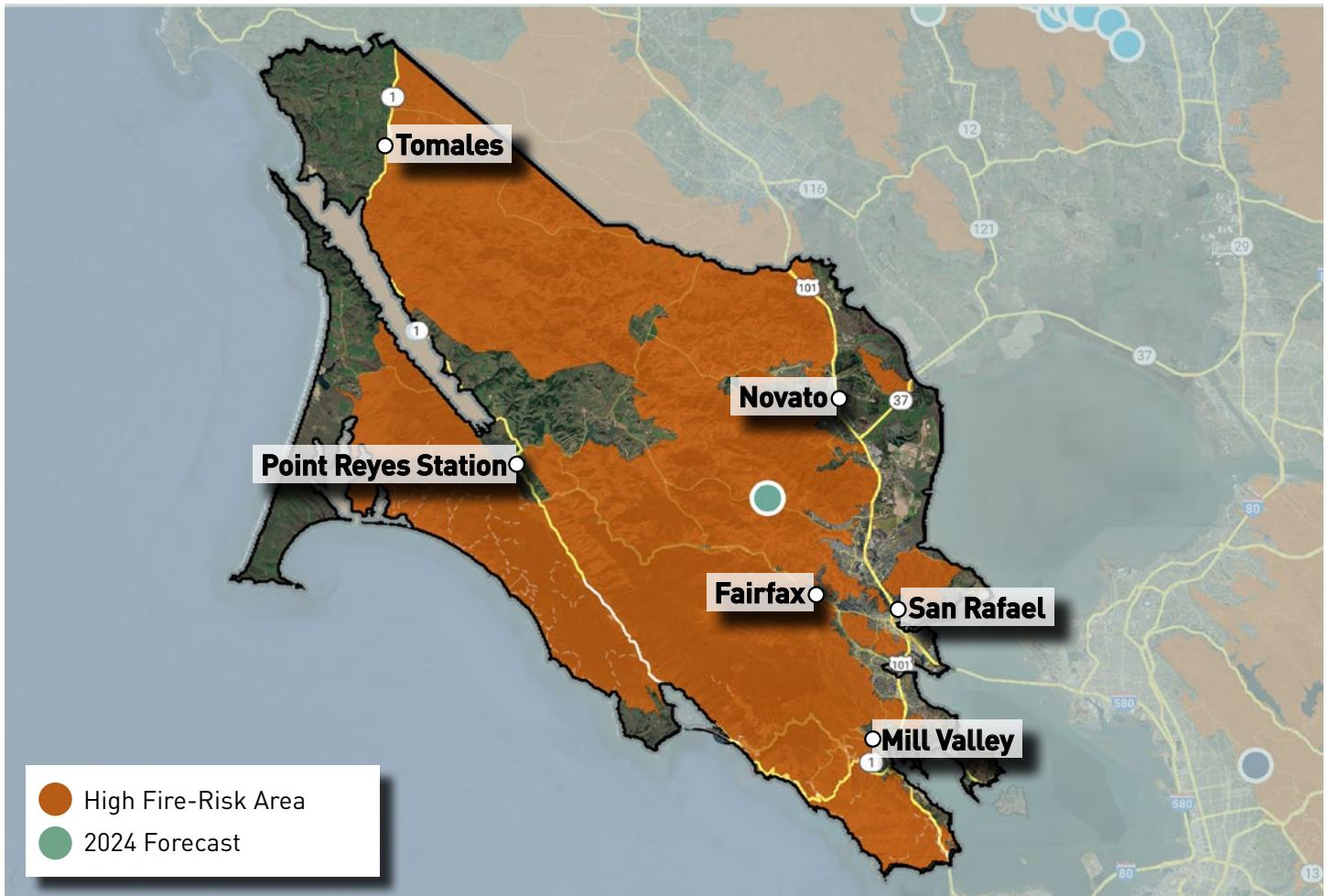


# Undergrounding Map Marin County

To reduce the risk of wildfires and keep our communities safe, PG&E is undergrounding 350 miles of distribution lines across our service area in 2023. Undergrounding is one of many layers of protection that PG&E uses to keep our customers and hometowns safe. The map below shows the approximate locations of recently complete or forecast projects for 2023, as well as areas we have identified for potential work in 2024-2026. Forecast miles include areas that are in any stage of the planning process and projects are subject to change.

2023 COMPLETE/FORECAST	2024 FORECAST	2025-2026 FORECAST*
APPROX. <b>0</b> MILES	APPROX. <b>1</b> MILE	<b>0</b> MILE

\*Extended forecast does not include all planned work and has a higher potential for changes.



For more information, please visit [pge.com/undergrounding](https://pge.com/undergrounding).

Data as of 9/30/2023. This map is for illustrative purposes. Forecasts can change as our risk model evolves to address the greatest wildfire risk. Forecast miles also exceed annual targets. Mileage in a community may increase or decrease due to access, weather, permitting or other constraints. In most cases, if a project is not completed during the year originally identified, it will continue through planning/construction phases during subsequent years.

Some of the measures included in this document are contemplated as additional precautionary measures intended to further reduce the risk of wildfires. "PG&E" refers to Pacific Gas and Electric Company, a subsidiary of PG&E Corporation. ©2023 Pacific Gas and Electric Company. All rights reserved. 10/18/2023.