

Emergency Preparedness & Response

2023 Public Safety Power Shutoff (PSPS) Tabletop Exercise (TTX)

June 14, 2023





Safety and Security Orientation



Earthquake

- Drop
- Cover
- Hold



Fire

- Exits, escape routes, evacuation plan
- [Compliant fire extinguisher](#)



Security

- Active shooter—get out, hide out, take out
- Use badge—don't tailgate
- Lock computer
- Report Phishing emails
- Protect data privacy
- Report suspicious packages



Medical Emergency

- First aid/CPR
- 911/share location
- AED



Ergonomics

- 30/30
- [Proper ergo](#)
- RSIGuard



Keys to Life 2023 Focus

1. Pre-job safety briefings
 2. Safe driving principles
 3. Personal Protective Equipment (PPE)
 4. Electrical safety testing & grounding
 10. Hazardous environment
- [All 10 Keys to Life](#)



Psychological Safety

- Care for each other
- Look out for one another
- Create a safe space for all
- Welcome new ideas from everyone
- Practice self-care



Emergency Planning

Update [emergency contacts](#) and [personal emergency preparedness plan](#)



On the road, off the phone.



Do not report to work if testing positive for COVID-19 symptoms.





PSPS Tabletop Agenda

1000-1015	Welcome, Introductions & Player Briefing/Orientation to Exercise
1015-1045	Module 1: 2023 PSPS Annex Overview & 10 Day Reporting
1045-1200	Module 2: Readiness Posture, Event Scoping, Planning & Notification
1200-1230	Lunch
1230-1300	Module 3: De-energization & Notification
1300-1430	Module 4: All Clear, Patrol & Restore, Notification & Damage Documentation
1430-1500	Wrap-Up, Hot Wash, Closing Remarks

WELCOME

2023 Public Safety Power Shutoff Tabletop Exercise

[REDACTED]

Director, Emergency Preparedness & Response (EP&R), Strategy & Execution (S&E)

[REDACTED]

Manager, EP&R, S&E, Training & Exercises

Facilitators

[REDACTED]

Emergency Management Specialist, EP&R, S&E, Training & Exercises

[REDACTED]

Emergency Management Specialist, EP&R, S&E, Training & Exercises





Teams Rules of Engagement

- Please keep your audio connection on mute when not speaking.
- Ensure your computer sound is muted if you called in from a phone to prevent feedback when speaking.
- Please do not interrupt when others are speaking, use the hand raise tool to get the facilitator's attention.
- Each Player will be given the opportunity to provide feedback on every question. Open dialogue is encouraged.
- Please turn on your video when engaging in the discussion.
- Send chat messages to the entire group for ease of monitoring.



Exercise Disclaimers & Expectations

Disclaimers

- This is an Emergency Preparedness **EXERCISE**.
- All dialogue, chat messages, and graphic visual aids are intended to assist Players in mitigating the **SIMULATED** PSPS Event portrayed.
- While the scenario provided is plausible, in no way is the simulation intended to portray any real event. Any such similarity is purely coincidental.
- This Tabletop Exercise is an **open, low-stress, no-fault environment**.
- **Decisions are not precedent-setting and may not reflect your organization's final position on an issue.** The exercise is exploratory and serves to identify issues, as well as multiple options and possible solutions.

Expectations

- The Exercise will accomplish the following:
 - Satisfy existing compliance requirements as defined by the California Public Utilities Commission
 - Test the ability of PG&E to prepare for, respond to, mitigate, and recover from a PSPS Event IAW the PSPS Annex to the Company Emergency Response Plan, and other relevant documents that contain PSPS-related policies and procedures.
 - All Players who are speaking should be on camera.

Observer Guidelines

Observer Guidelines

- The observer role is a controlled and limited role.
- Communication between players and observers is **not** allowed during the exercise. This includes posting messages in the chat feature of MS Teams.
- Observers may contact the Exercise Design Team if they have any questions or comments.
- All Players who are speaking shall be on camera.

2023 PSPS Annex Overview And 10 Day Reporting



PSPS Team, Electric Program Manager

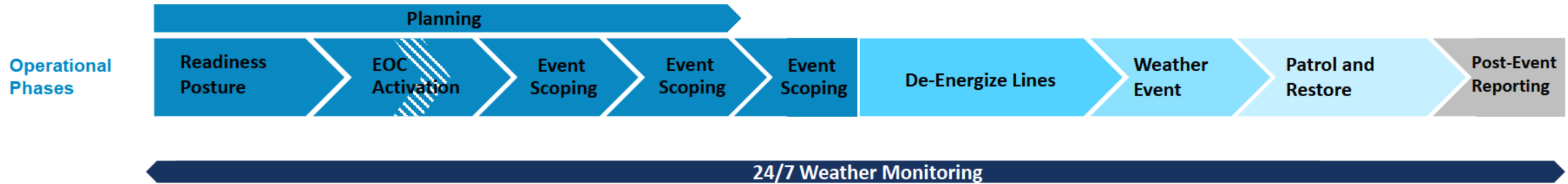


PSPS Team, Electric Program Manager





PSPS Process Timeline



PSPS Readiness Posture Process

Readiness Posture occurs prior to the decision to activate the EOC to prepare for a potential EOC activation for a PSPS.

- ✓ If Meteorology identifies a potential PSPS Event, certain EOC roles will participate in Readiness Posture meetings to align on activation.
- ✓ The following topics are discussed:
 - Meteorology update
 - HAWC Update
 - PSPS Process Updates
 - Objectives (Situational Awareness, PSPS Event Timeline, etc.)

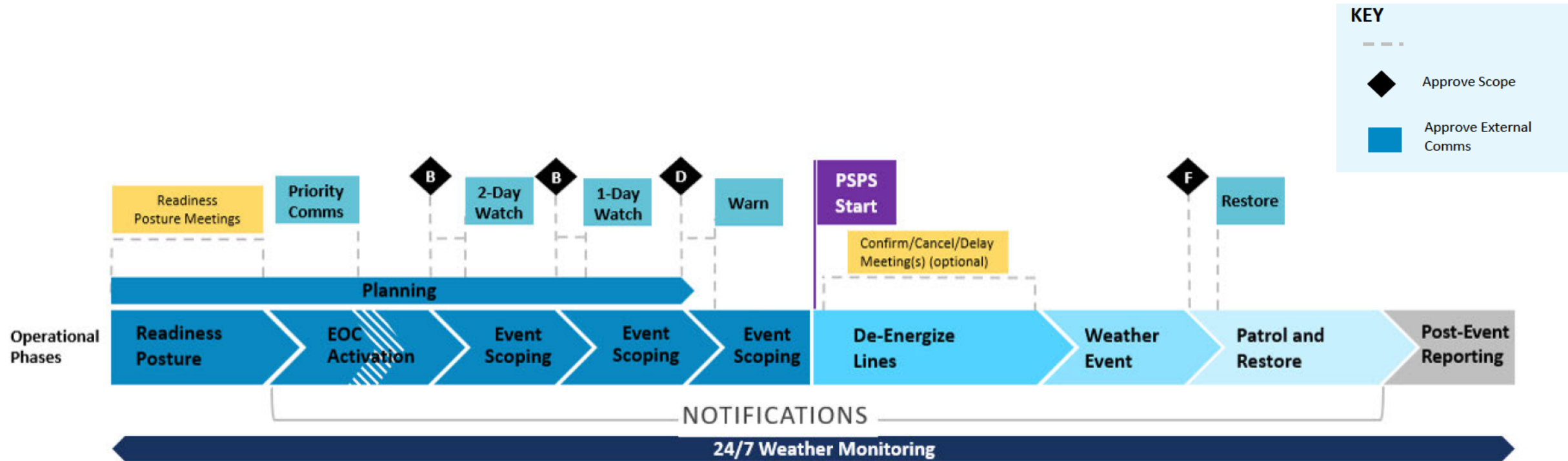
PSPS PMO and EP&R Leadership determine if Readiness Posture call is needed and timing

EP&R schedules meeting using standard 203 template for distribution list

EP&R facilitates Readiness Posture Meetings

Decision to activate EOC

PSPS Decision Making Timeline

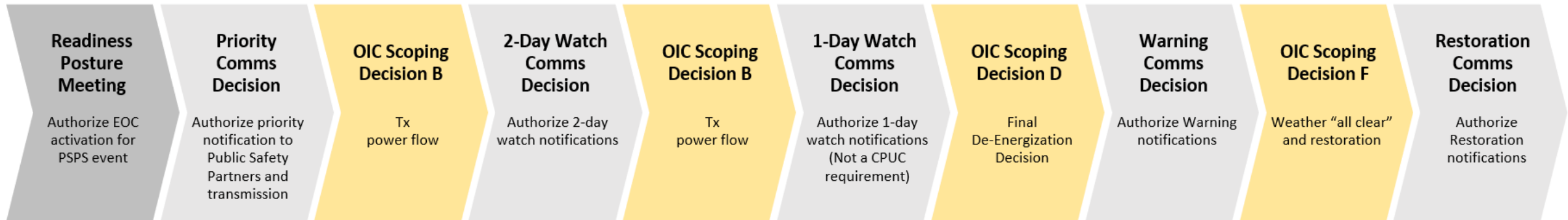




PSPS Decision Meetings

In 2023, the scoping and communications decisions will occur in separate meetings to support meeting notification compliance requirements.

- ✓ OIC and EOC Commander make decisions related to key steps in the PSPS process.
- ✓ PSPS Section Chief schedules and facilitates, Deputy supports and submits key decisions in EDRS.





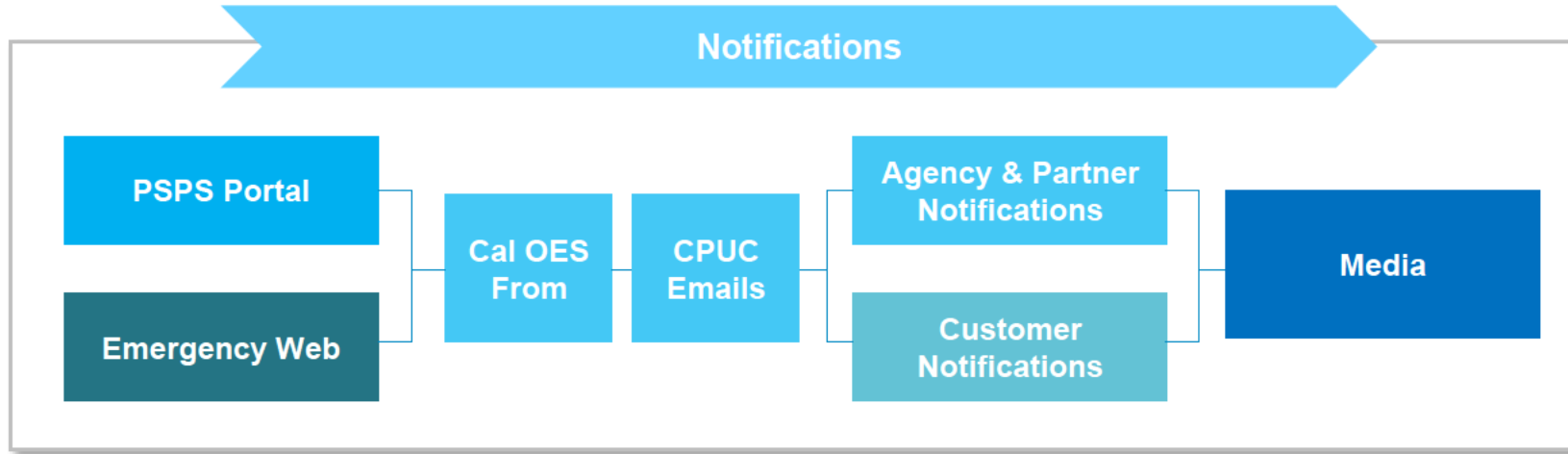
Confirm/Cancel/Delay Meeting Process

The PSPS Section Chief hosts Confirm/Cancel/Delay meetings leading up to de-energization to confirm shutoff timing or cancellation.

Decision	Details	Notifications Required
Confirm	<ul style="list-style-type: none">Weather has not changed and the area will be de-energized at the anticipated time	<ul style="list-style-type: none">Customer: At de-energizationAgency: Live calls at de-energization, as needed
Cancel	<ul style="list-style-type: none">Weather has cleared and there is no longer a need to de-energize the area	<ul style="list-style-type: none">Customer: Cancellations within 2 hours of decisionAgency: Cancellations following Customer notifications
Delay	<ul style="list-style-type: none">Weather has changed and de-energization is anticipated later than the original estimate	<ul style="list-style-type: none">Customer: Pending delayAgency: Delay (w/ info) / Delay (no info)



Communications Execution Overview



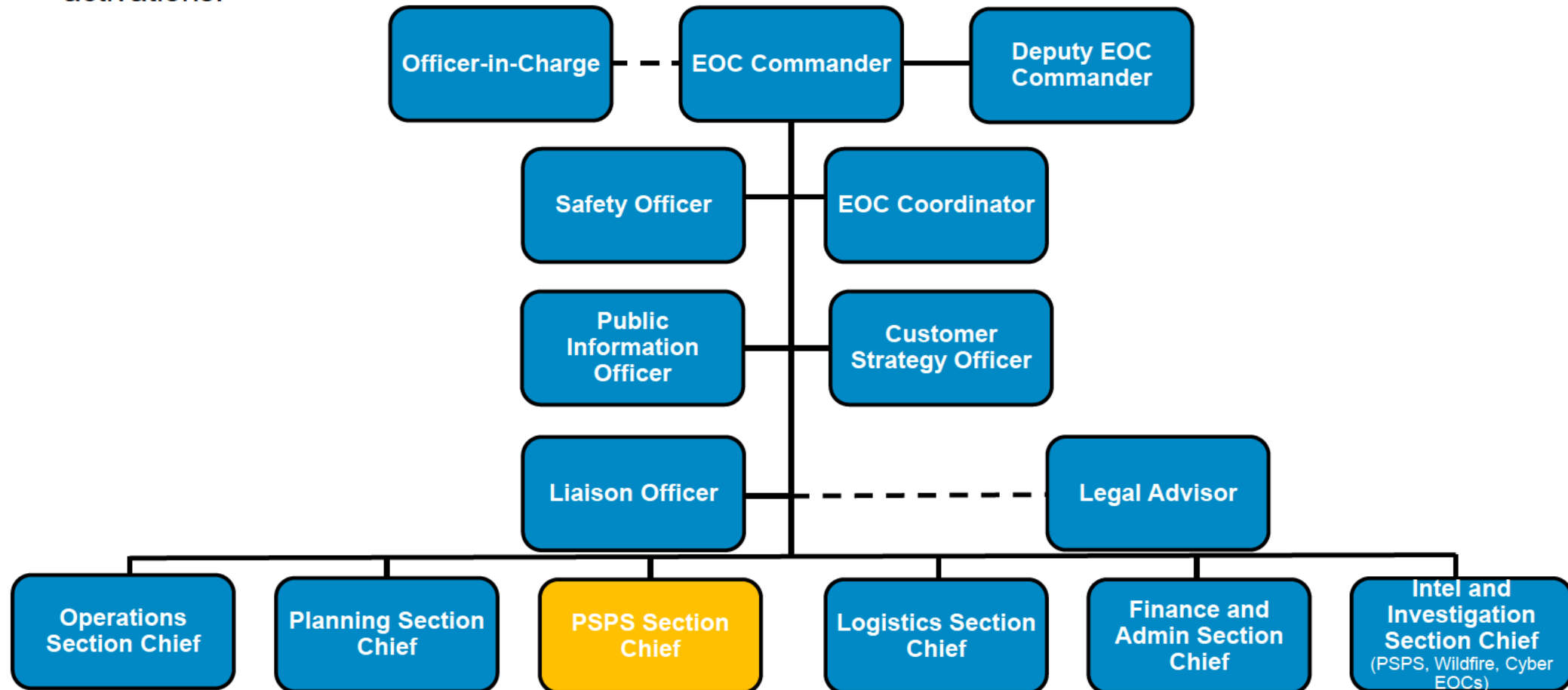
PSPS Portal Scope	Digital Strategy Scope	Liaison Scope	Customer Scope	Transmission Customer Scope	Public Information Officer Scope
<ul style="list-style-type: none">• Agencies• Public Safety partners• Telecom customers• Event specific updates	<ul style="list-style-type: none">• Priority Partners: public safety partners• Event specific updates• Map of the event• Address look-up tool• Information on how to prepare• Community Resources Center (CRC) list• Restoration information: www.pge.com/psps	<ul style="list-style-type: none">• Cal OES• CPUC• Governor's Office• City, County, Tribal Governments• CCAs• CAL FIRE• First Responders	<ul style="list-style-type: none">• Public Safety Partners (CC1, TT1, TT2)• Medical Baseline Customers• Customers with special energy needs due to qualifying medical conditions• General Customers (e.g., residential, businesses)	<ul style="list-style-type: none">• Critical Facilities (e.g., water, telecommunications, hospitals)	<ul style="list-style-type: none">• Press releases and new outlet updates• Live media briefings• Social media• Media inquiry responses and interviews• Radio spots

PSPS EOC Section Overview

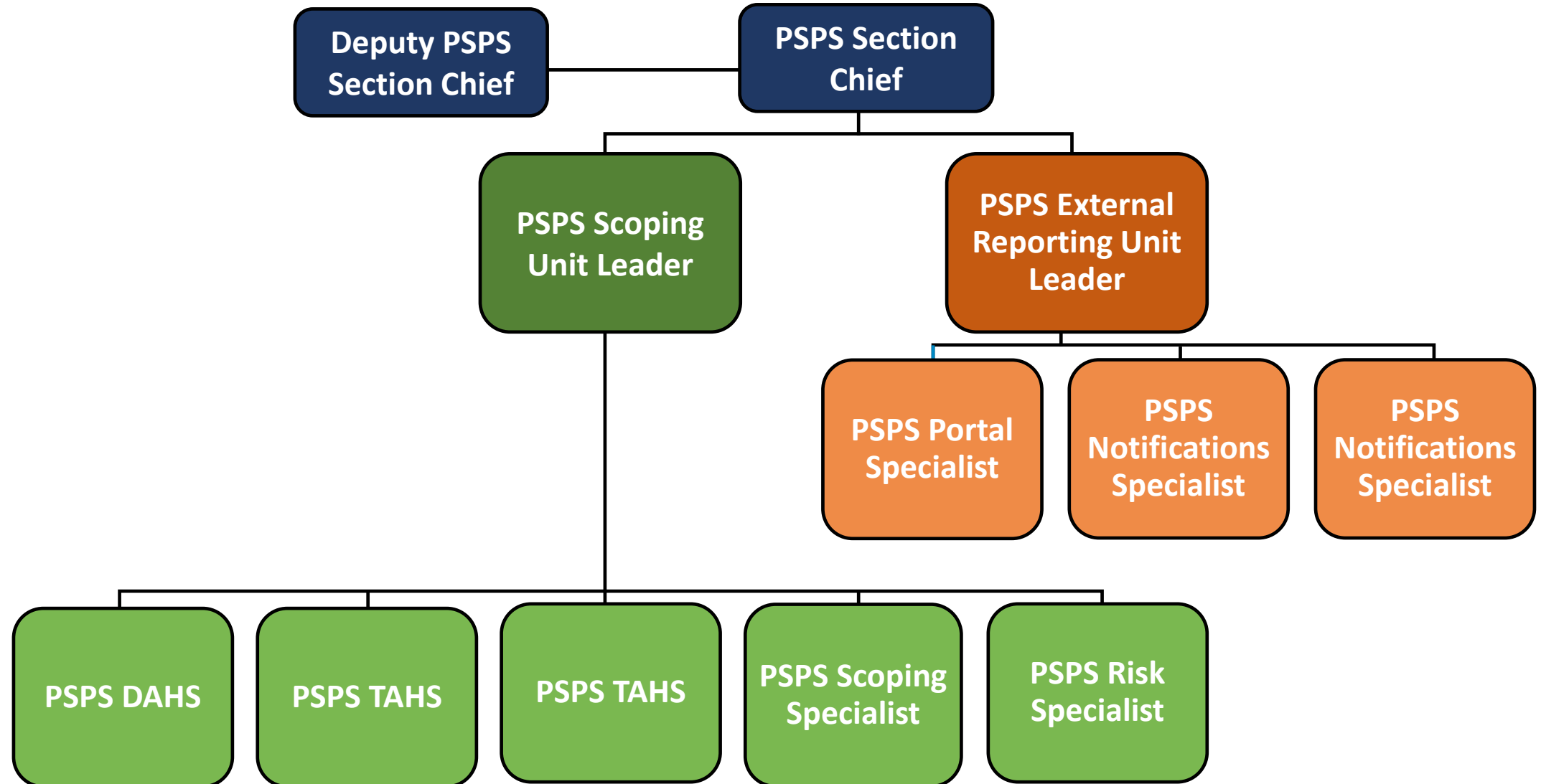


PSPS EOC Organization Chart

- **Planning Section:** Continues to focus on supporting EOC activations through the standard Planning Section response.
- **PSPS EOC Section:** No longer within the Planning organization, the Section focuses solely on supporting PSPS EOC activations.

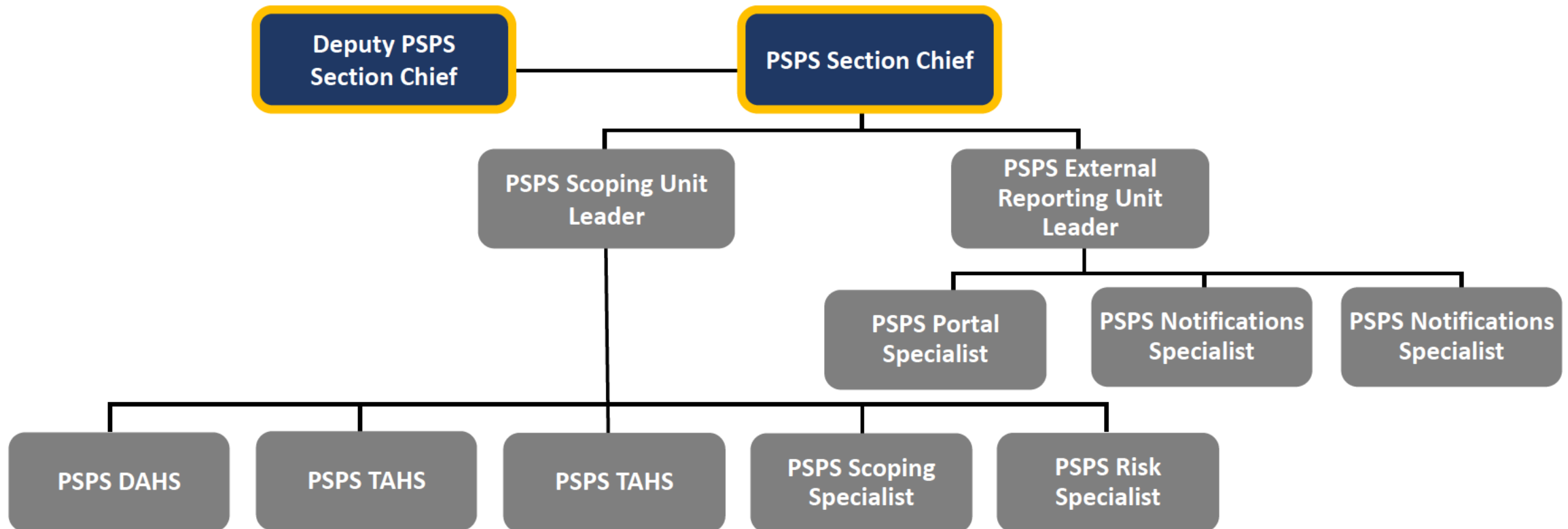


PSPS Section – Roles and Primary Responsibilities



PSPS Section – Roles and Primary Responsibilities

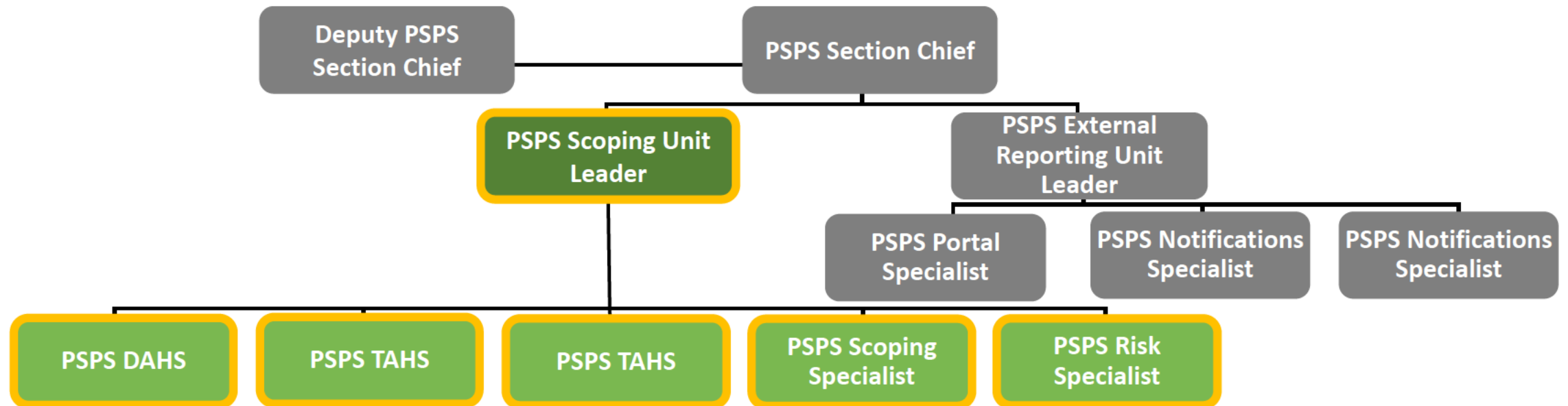
- **PSPS Section Chief:** Oversees the PSPS Section and acts as key contact to the rest of the EOC including EOC Commanders and leads key PSPS decision meetings.
- **Deputy PSPS Section Chief:** Acts as Deputy to the PSPS Section Chief by supporting key decision meetings and PSPS-related problem resolutions.



PSPS Section – Scoping Unit

Scoping Unit develops PSPS customer scope using information such as meteorology polygons, tags and distribution/transmission impacts.

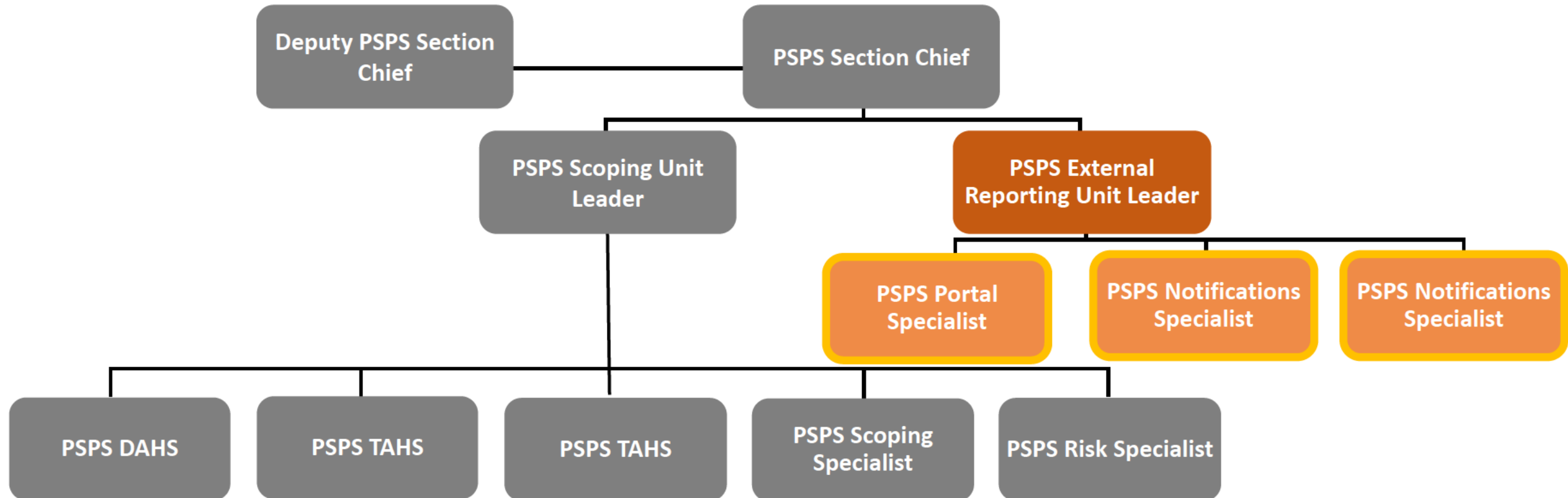
- **Scoping Unit Leader:** Oversees the Scoping Unit and serves as key POC for scoping related activities/questions from the EOC.
- **Scoping Specialist:** Analyzes distribution impact and incorporates inputs into final scope from DAHS, EDEC and ETEC.
- **Transmission Asset Health Specialist:** Identifies transmission line segments and customers to be included in scope.
- **Distribution Asset Health Specialist:** Analyzes tree and EC tags and their impact on PSPS event scope.
- **PSPS Risk Specialist:** Assesses the risk and benefits of a potential PSPS event, one of many decision-making factors.



PSPS Section – External Reporting Unit

Produces collateral for external communications and facilitates the communication process.

- **PSPS External Reporting Unit Leader:** Oversees the external reporting unit and facilitates communications sequences (i.e., tracking key timestamps, notes, progress)
- **PSPS Portal Specialist:** Manages the PSPS Portal and develops posted collateral (i.e., MBL lists, maps)
- **PSPS Notifications Specialist:** Develops collateral for the communications process (i.e., reports, notification files and others.)



PSPS Post-Event Reporting Overview

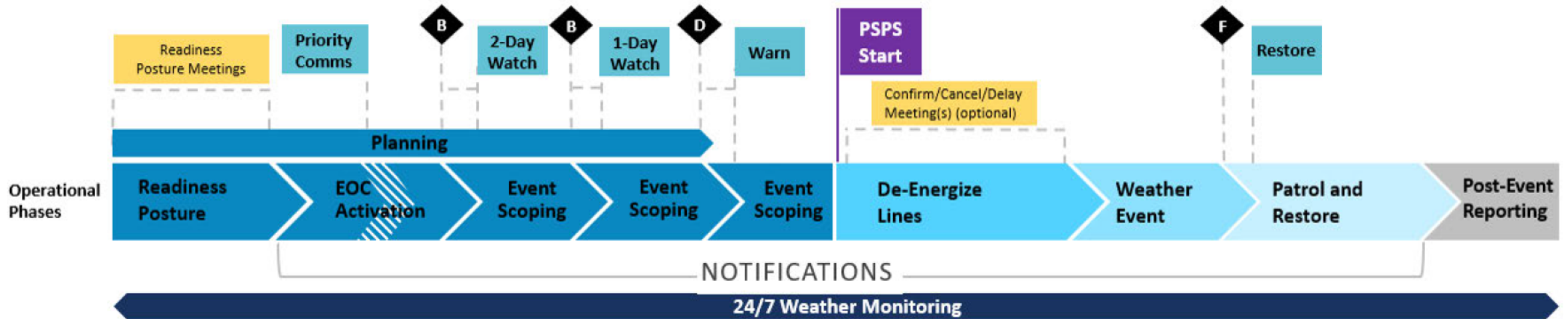


Overview

- Required to prepare a report following each PSPS activation (even if we didn't de-energize) to describe actions taken to prepare and execute a PSPS.*
- Report is submitted within 10 business days of EOC de-activation.

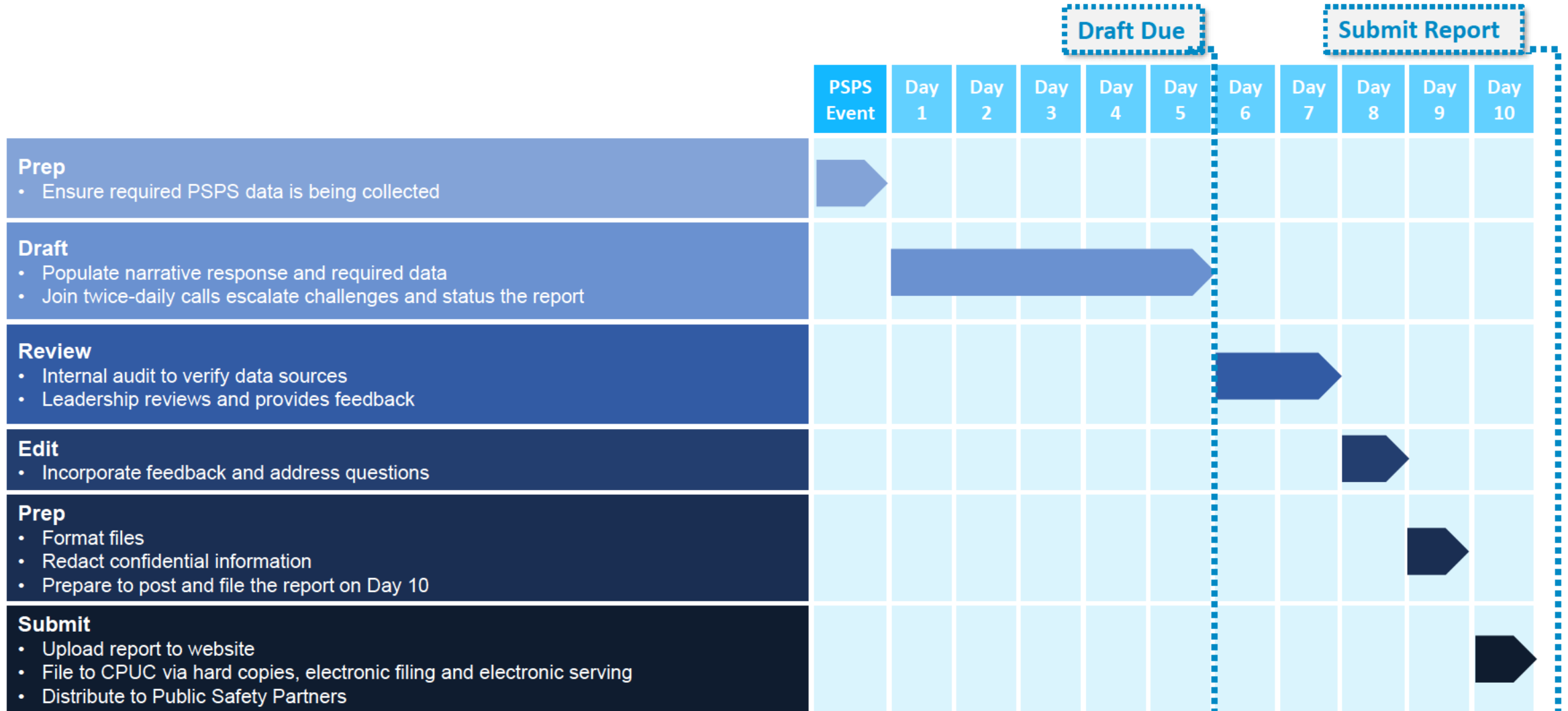
Key Report Topics

- Decision-Making Criteria
- Damages and Hazards
- Notifications
- Public Safety Partner Engagements
- Community Resource Centers
- Mitigation



*CPUC Resolution ESRB-8, Decision (D.) 19-05-042.

Timeline



Reporting Breakdown

- Coordinate with **~45** subject matter experts across **8** workstreams.
- Draft responses to **30** questions and populate **18** data tables.
- Submit **4** files that include **~200+** pages of information.

Section	Responsible Workstream
Section 1 – Summary and Overview	PSPS Project Management Office (PMO), Electric Incident Investigations (EII), Customer
Section 2 – Decision Making Process	PSPS PMO, Meteorology
Section 3 – De-energized Time, Place, Duration and Customers	PSPS PMO, Meteorology, Transmission
Section 4 – Damages and Hazards	EII
Section 5 – Notifications	PSPS PMO, Customer, Liaison
Section 6 – Local and State Public Safety Partner Engagements	Customer, Liaison
Section 7 – Complaints and Claims	Customer, Liaison
Section 8 – Power Restoration	PSPS PMO, Emergency Field Operations
Section 9 – Community Resource Centers	Customer
Section 10 – Mitigation	Temporary Generation
Section 11 – Lessons Learned	PSPS PMO, Customer, Liaison, Emergency Preparedness & Response (EP&R), Meteorology
Section 12 – Other Relevant Information	PSPS PMO, Meteorology



Q&A Discussion

Questions?

Module 2

Readiness Posture, Event Scoping, Planning and Notification



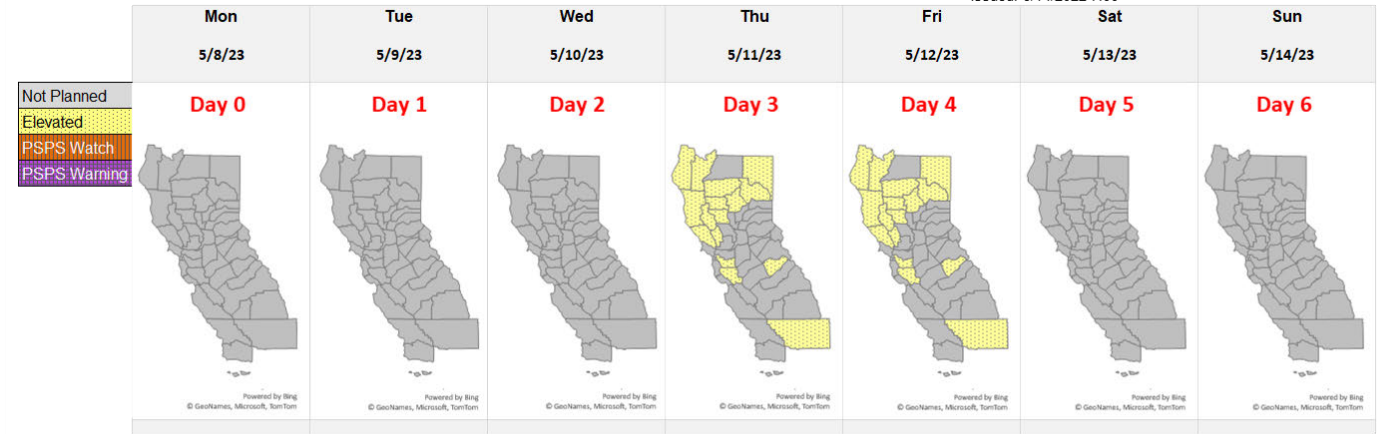


EP&R | Exercise Exercise Exercise – 2023 PSPS TTX

- Dry, offshore wind event is expected to develop Thursday, May 11 through Friday, May 12
- Winds increasing Thursday morning across Northern Region, then spreading south across the remainder of the territory during the day
- Winds are expected to reach peak intensity Thursday afternoon through Friday morning
- Northeasterly/Offshore Winds
 - 25 – 35 mph
 - Gusts 45 – 55+ mph, primarily over elevated terrain

PG&E 7 Day Public Safety Power Shutoff (PSPS) Potential

Issued: 6/14/2022 7:00

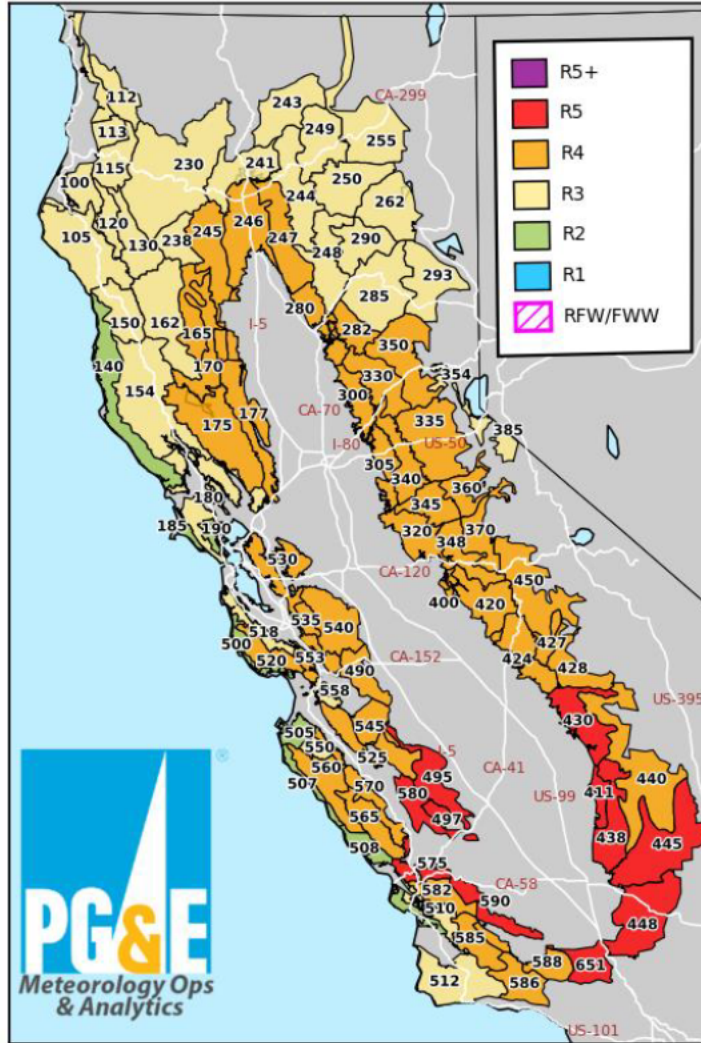


This forecast has been customized solely for PG&E utility operations and should not be used for any other purpose or by any other entity. This tool provides an outlook of the potential for a Public Safety Power Shutoff (PSPS) event in the next 7 days. It is not a fire danger forecast. PSPS decisions are made at more granular levels than provided here; thus, only a portion of a county may experience a PSPS event.

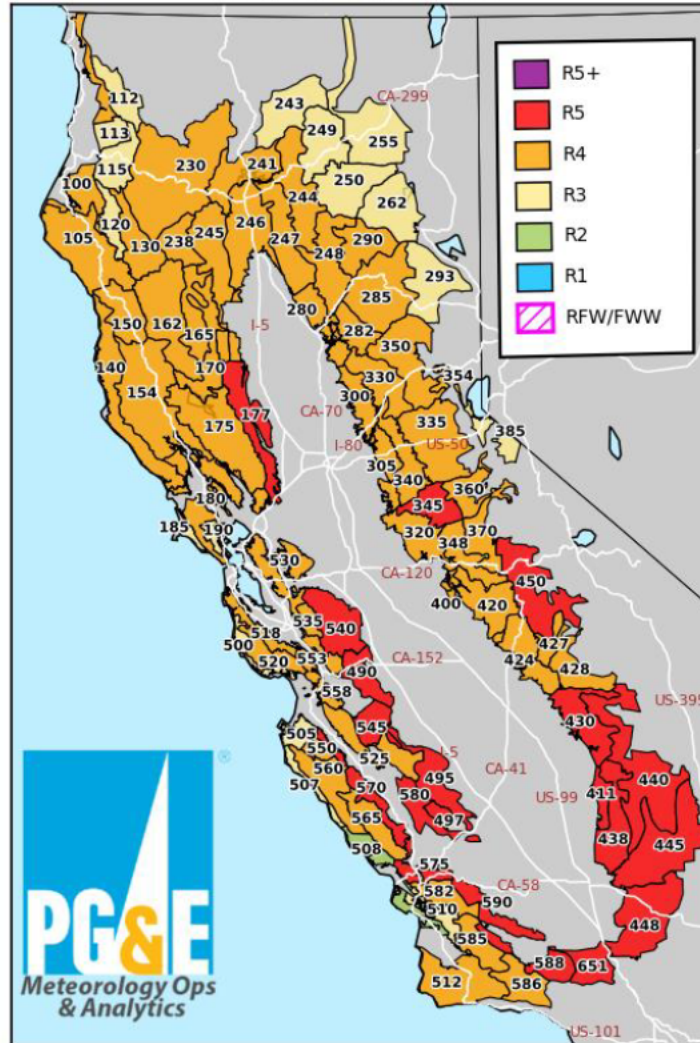
Day 0 Mon 5/8/2023			Day 1 Tue 5/9/2023			Day 2 Wed 5/10/2023			Day 3 Thu 5/11/2023			Day 4 Fri 5/12/2023			Day 5 Sat 5/13/2023			Day 6 Sun 5/14/2023		
Elevated	PSPS Watch	PSPS Warning	Elevated	PSPS Watch	PSPS Warning	Elevated	PSPS Watch	PSPS Warning	Elevated	PSPS Watch	PSPS Warning	Elevated	PSPS Watch	PSPS Warning	Elevated	PSPS Watch	PSPS Warning	Elevated	PSPS Watch	PSPS Warning
									Humboldt Trinity Colusa Glenn Lassen Tehama Mendocino Sonoma Lake Napa Butte Plumas Santa Clara Alameda Mariposa Kern			Humboldt Trinity Colusa Glenn Lassen Tehama Mendocino Sonoma Lake Napa Butte Plumas Santa Clara Alameda Mariposa Kern								

EP&R | Exercise Exercise Exercise – 2023 PSPS TTX

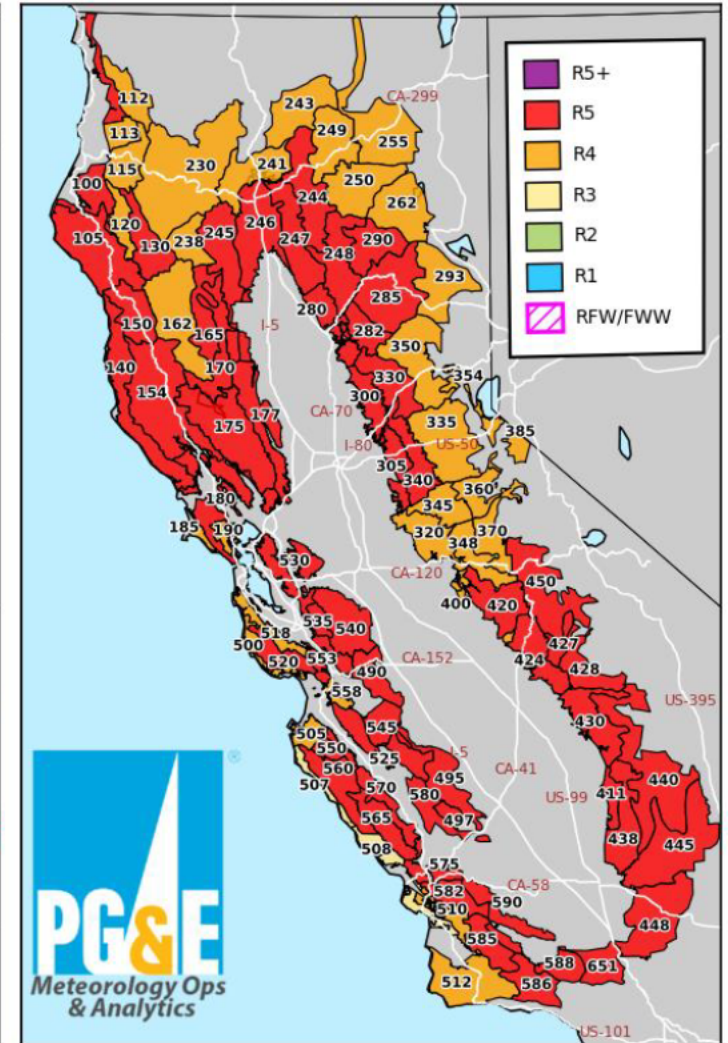
PG&E Utility Fire Potential Index Ratings
Valid for 05/08/2023



PG&E Utility Fire Potential Index Ratings
Valid for 05/09/2023



PG&E Utility Fire Potential Index Ratings
Valid for 05/10/2023



PG&E's Fire Potential Index is intended for the exclusive use of PG&E and is proprietary to PG&E. PG&E, nor their parent corporations or affiliates, nor any person acting on their behalf (a) makes any warranty, expressed or implied, with respect to the use of PG&E's Fire Potential Index; or (b) assumes any liability with respect to the use of PG&E's Fire Potential Index. This forecast is intended and has been customized for PG&E utility operations and should not be used for any other purpose or by any other entity. Do not share this information without authorization.

PG&E's Fire Potential Index is intended for the exclusive use of PG&E and is proprietary to PG&E. PG&E, nor their parent corporations or affiliates, nor any person acting on their behalf (a) makes any warranty, expressed or implied, with respect to the use of PG&E's Fire Potential Index; or (b) assumes any liability with respect to the use of PG&E's Fire Potential Index. This forecast is intended and has been customized for PG&E utility operations and should not be used for any other purpose or by any other entity. Do not share this information without authorization.

PG&E's Fire Potential Index is intended for the exclusive use of PG&E and is proprietary to PG&E. PG&E, nor their parent corporations or affiliates, nor any person acting on their behalf (a) makes any warranty, expressed or implied, with respect to the use of PG&E's Fire Potential Index; or (b) assumes any liability with respect to the use of PG&E's Fire Potential Index. This forecast is intended and has been customized for PG&E utility operations and should not be used for any other purpose or by any other entity. Do not share this information without authorization.

Predictive Services Forecast



North Ops 7-day Significant Fire Potential Outlook

Issued by North Ops Predictive Services, Redding CA

Published: Monday, May 08, 2023

Predictive Service Area (PSA)	Mon 08 May	Tue 09 May	Wed 10 May	Thu 11 May	Fri 12 May	Sat 13 May	Sun 14 May	Mon 15 May
NC01 - North Coast								
NC02 - Mid Coast to Mendocino				W	W			
NC03A - Bay Marine				W	W			
NC03B - Diablo-Santa Cruz Mtns				W	W			
NC04 - Northwestern Mtn				W	W			
NC05 - Sac Valley/Foothills				W	W			
NC06 - NE California								
NC07 - Northern Sierras				W	W			
NC08 - Far Eastside								



Predictive Services Forecast



**Predictive
Services**

National Predictive Services Forecast
California South Ops

Published: Monday, May 08, 2023

Predictive Service Area (PSA)	Mon 08 May	Tue 09 May	Wed 10 May	Thu 11 May	Fri 12 May	Sat 13 May	Sun 14 May	Mon 15 May
SC01 - Eastern Sierra								
SC02 - Central Sierra				W	W			
SC03 - Southern Sierra				W	W			
SC04 - Sierra Foothills				W	W			
SC05 - Central Valley				W	W			
SC06 - Central Coast Interior				W	W			
SC07 - Central Coast				W	W			
SC08 - South Coast				W	W			
SC09 - Western Mountains				W	W			
SC10 - Eastern Mountains				W	W			
SC11 - Southern Mountains					W			
SC12 - Lower Deserts								
SC13 - Eastern Deserts								
SC14 - Central Mojave								
SC15 - Upper Deserts								
SC16 - Northern Deserts								

Legend:

Fuel Dryness

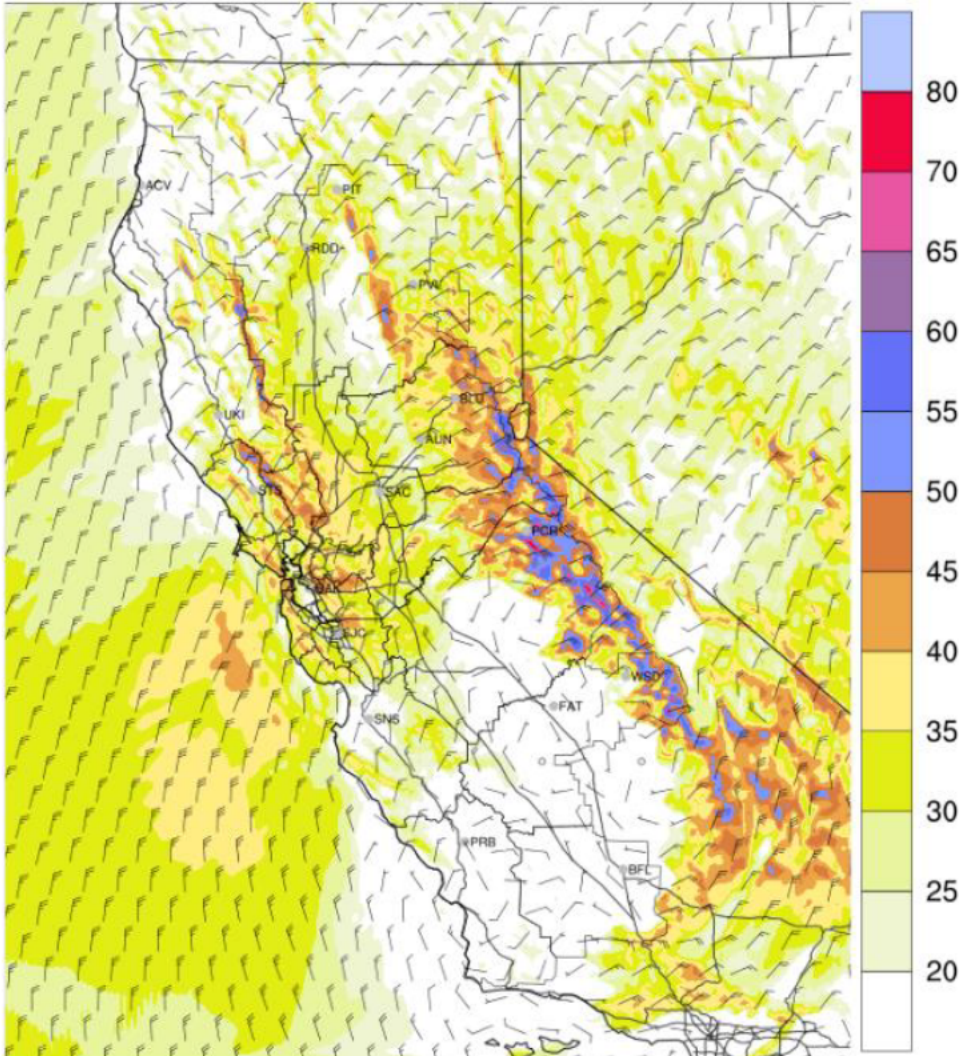
- Moist - Little no risk for large fires
- Dry - Low risk of large fires in the absence of a "High Risk" event
- Very Dry - Low/Moderate risk of large fires in the absence of a "High Risk" event
- Data Unavailable

High Risk Days

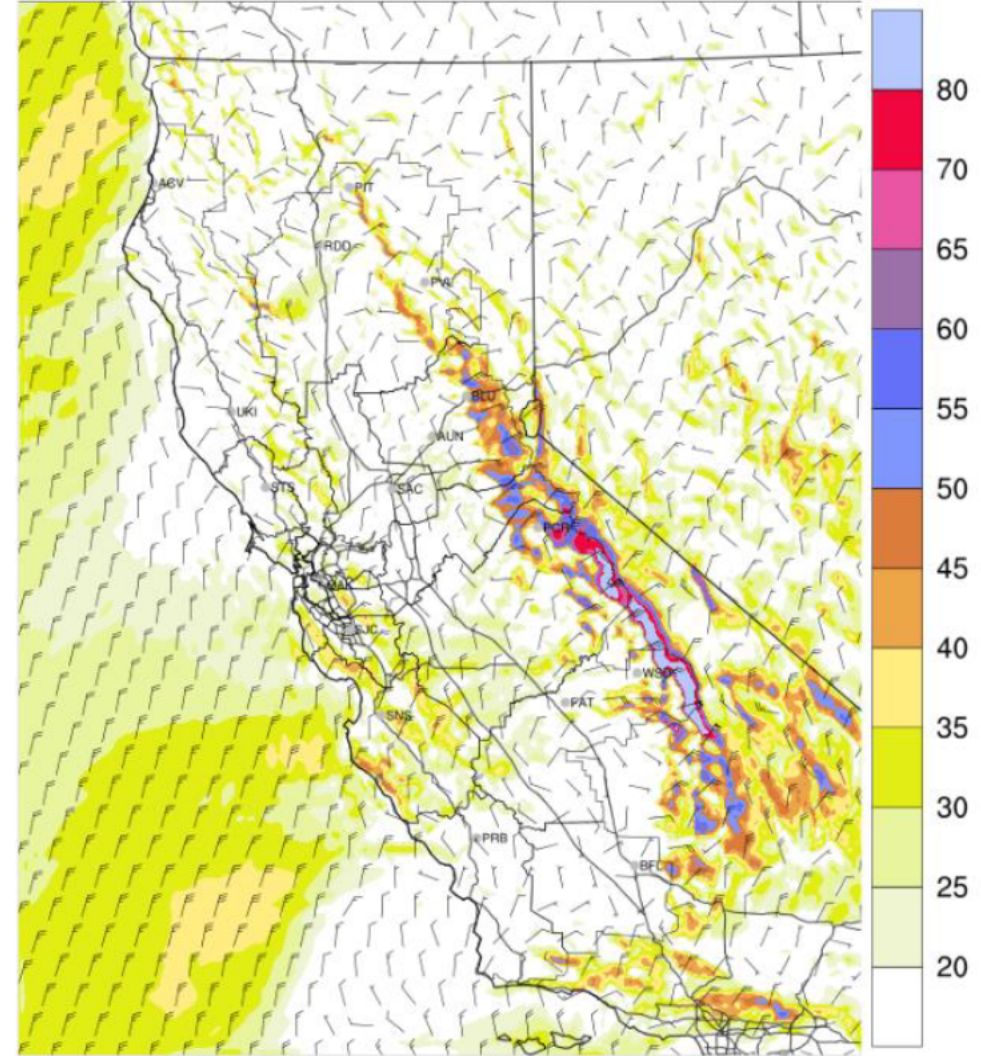
- At least a 20% chance of a "Large Fire" due to a combination of either "Dry" or "Very Dry" Fuel Dryness and an Ignition Trigger. High Risk Days will include the symbol indicating the type of event.
- At least a 20% chance of a new "Large Fire" or significant growth on existing fires due to a combination of either "Dry" or "Very Dry" Fuel Dryness and a Critical Burn Environment. High Risk Days will include the symbol indicating the type of event.



Forecasted Winds



Thursday Evening





EP&R | Exercise Exercise Exercise – 2023 PSPS TTX

Preliminary Scope

Start

1400-1800 – Thursday, May 11

End

0800-1200 – Friday, May 12

2023-05-11-V-01

time_place_id

2023-05-11-TP-01

2023-05-11-TP-02

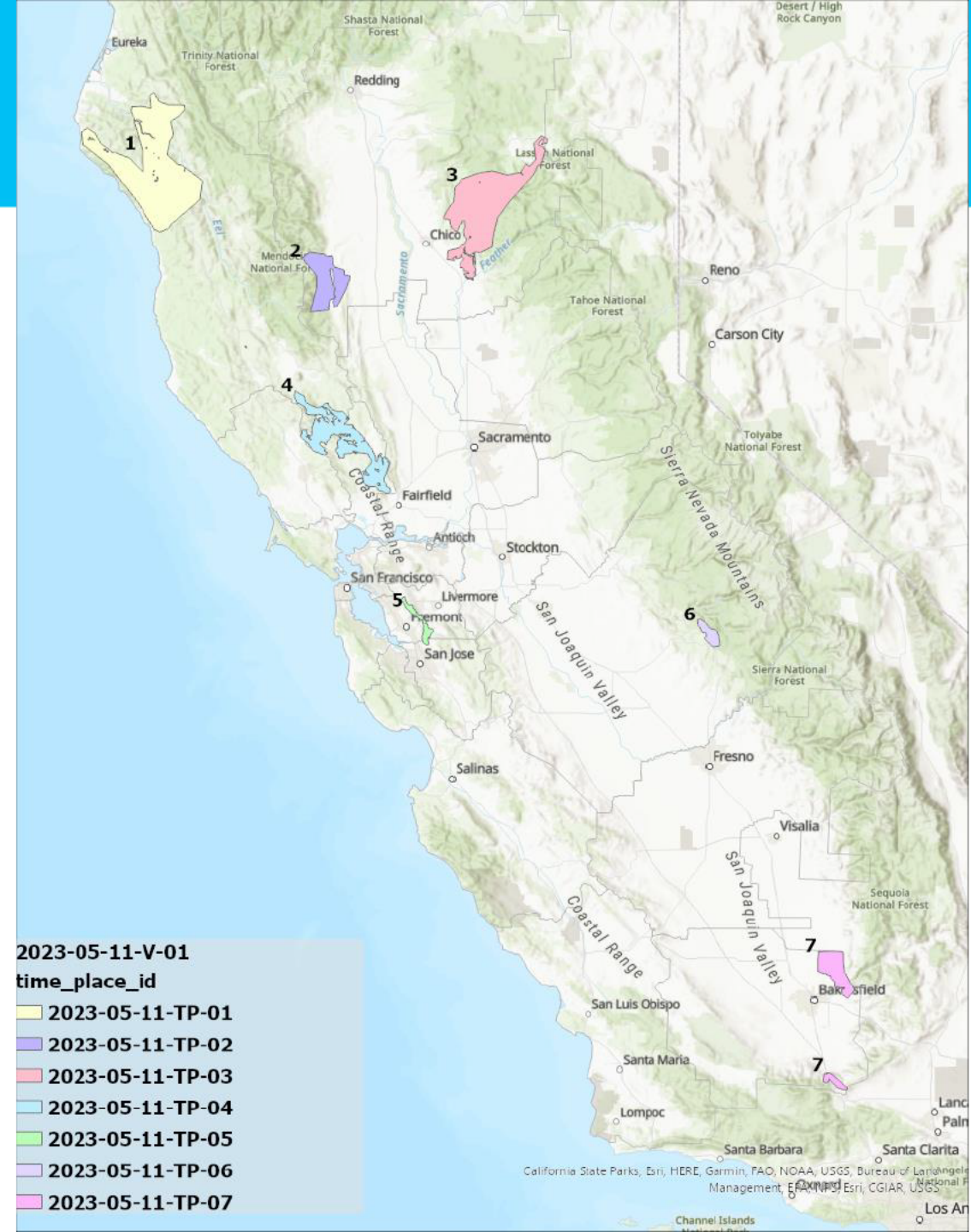
2023-05-11-TP-03

2023-05-11-TP-04

2023-05-11-TP-05

2023-05-11-TP-06

2023-05-11-TP-07





EP&R | Exercise Exercise Exercise – 2023 PSPS TTX

DSO SOPP Forecast

DSO SOPP Model Forecast

Issued: Monday, May 08, 2023 08:00

Transformer Level Outages and Above

Outages by Division	Monday 5/8/2023				Tuesday 5/9/2023				Wednesday 5/10/2023				Thursday 5/11/2023			
	SO	CESO	TM	CR	SO	CESO	TM	CR	SO	CESO	TM	CR	SO	CESO	TM	CR
North Coast	10	1300	7	4	11	1400	7	4	11	1400	7	4	13	1900	22	15
Humboldt	4	400	3	2	5	500	3	2	5	500	3	2	13	1900	9	6
Sonoma	3	400	2	1	3	400	2	1	3	400	2	1	8	1500	6	4
North Bay	3	500	2	1	3	500	2	1	3	500	2	1	12	3500	7	5
North Valley & Sierra	18	1500	11	7	17	1400	10	6	17	1400	10	6	36	4900	22	15
North Valley	6	400	5	3	6	400	5	3	6	400	5	3	17	3200	12	8
Sierra	5	500	3	2	4	400	2	1	4	400	2	1	6	600	3	2
Sacramento	7	600	3	2	7	600	3	2	7	600	3	2	13	1100	7	5
Bay Area	7	2100	10	5	7	2100	10	5	7	2100	10	5	22	6900	14	9
San Francisco	1	400	2	1	1	400	2	1	1	400	2	1	2	900	2	1
East Bay	1	500	2	1	1	500	2	1	1	500	2	1	4	1800	3	2
Diablo	2	500	2	1	2	500	2	1	2	500	2	1	5	1200	3	2
Peninsula	2	400	2	1	2	400	2	1	2	400	2	1	4	900	3	2
Mission	1	300	2	1	1	300	2	1	1	300	2	1	7	2100	3	2
South Bay & Central Coast	12	2000	9	5	12	2000	9	5	12	2000	9	5	24	3900	15	10
De Anza	2	400	2	1	2	400	2	1	2	400	2	1	5	900	3	2
San Jose	2	500	2	1	2	500	2	1	2	500	2	1	5	1200	3	2
Central Coast	5	700	3	2	5	700	3	2	5	700	3	2	9	1200	6	4
Los Padres	3	400	2	1	3	400	2	1	3	400	2	1	5	600	3	2
Central Valley	22	2300	13	8	22	2300	13	8	25	2700	13	8	38	5000	19	12
Stockton	5	600	3	2	5	600	3	2	5	600	3	2	6	800	3	2
Yosemite	6	500	3	2	6	500	3	2	7	600	3	2	10	900	5	3
Fresno	8	800	5	3	8	800	5	3	9	1000	5	3	12	1300	6	4
Kern	3	400	2	1	3	400	2	1	4	500	2	1	10	2000	5	3
PG&E SYSTEM	69	9200	50	29	69	9200	49	28	72	9600	49	28	153	27600	92	61

Notes: SO = Sustained Outages, CESO = Customers Experiencing Sustained Outages, TM = Troublemakers, CR = Crews

DSO SOPP Model Forecast Timing, by Division

Timing by Division	Monday 5/8/2023	Tuesday 5/9/2023	Wednesday 5/10/2023	Thursday 5/11/2023
	Timing	Timing	Timing	Timing
Humboldt				16:00 - 24:00
Sonoma				16:00 - 24:00
North Bay				16:00 - 24:00
North Valley				16:00 - 24:00
Sierra				
Sacramento				16:00 - 24:00
San Francisco				
East Bay				
Diablo				
Peninsula				
Mission				16:00 - 24:00
De Anza				
San Jose				
Central Coast				
Los Padres				
Stockton				
Yosemite				
Fresno				
Kern				16:00 - 24:00

Notes: Timing reflects the risk period of outage producing weather for any division at elevated Cat 1 or above

DSO SOPP 911 - Standby Event Forecast

Issued: 5/8/23 8:00	Monday 5/8/2023	Tuesday 5/9/2023	Wednesday 5/10/2023	Thursday 5/11/2023
911 Events by Division	911	911	911	911
North Coast	3	4	4	12
Humboldt	1	2	2	3
Sonoma	1	1	1	3
North Bay	1	1	1	6
North Valley & Sierra	6	6	6	10
North Valley	2	2	2	5
Sierra	1	1	1	2
Sacramento	2	2	2	3
Bay Area	5	5	5	13
San Francisco	1	1	1	1
East Bay	1	1	1	3
Diablo	1	1	1	3
Peninsula	1	1	1	2
Mission	1	1	1	4
South Bay & Central Coast	5	5	5	8
De Anza	1	1	1	2
San Jose	1	1	1	2
Central Coast	2	2	2	3
Los Padres	1	1	1	1
Central Valley	6	6	8	10
Stockton	1	1	1	2
Yosemite	2	2	2	2
Fresno	2	2	3	3
Kern	1	1	2	3
PG&E SYSTEM	24	25	27	53

PG&E Internal Use Only

Meteorology Operations & Analytics

Note: Numbers indicate the expected number of 911-standby events

DSO SOPP 911 - Standby Event Timing

Timing by Division	Monday 5/8/2023	Tuesday 5/9/2023	Wednesday 5/10/2023	Thursday 5/11/2023
	911	911	911	911
Humboldt				16:00 - 24:00
Sonoma				16:00 - 24:00
North Bay				16:00 - 24:00
North Valley				16:00 - 24:00
Sierra				
Sacramento				16:00 - 24:00
San Francisco				
East Bay				
Diablo				
Peninsula				
Mission				16:00 - 24:00
De Anza				
San Jose				
Central Coast				
Los Padres				
Stockton				
Yosemite				
Fresno				
Kern				16:00 - 24:00

PG&E Internal Use Only

Meteorology Operations & Analytics

Note: Timing coincides with DSO SOPP Model timing for adverse weather



EP&R | M2 - Readiness Posture, Event Scoping, Planning and Notification

Q1. What are the meteorological criteria that triggered the activation of Readiness Posture for this PSPS Event?

How are these weather patterns monitored in the HAWC and the SIPT, and how has this changed for 2023?

Q2. Please explain how the Customer Strategy Officer would respond to a request from a critical infrastructure customer who is asking whether this potential PSPS event will impact their organization?

Q3. Who is the key POC for any PSPS process or scoping related information?



EP&R | M2 - Readiness Posture, Event Scoping, Planning and Notification

Q4. Name 3 key objectives you need to achieve during Readiness Posture?

Q5. EOC Commander, please outline your priorities and the Essential Elements of Information required to inform your decision-making process.

How has this process changed since 2022?

Q6. How are the Emergency Centers (EDEC, ETEC, STOEC, GCC, DCC, REC, OEC) notified of a potential activation?

How has this process changed compared to past years?



EP&R | M2 - Readiness Posture, Event Scoping, Planning and Notification

Q7. Why is impacted coworker analysis only conducted by exception during a PSPS event unlike during an HR natural hazard emergency response?

Q8. Please describe any communication that PG&E may have with other entities e.g., SCE if shared circuits are involved.

Meteorology Re-Scope





- ### PG&E 7 Day Public Safety Power Shutoff (PSPS) Potential

[illegible]

This forecast has been customized solely for PG&E utility operations and should not be used for any other purpose or by any other entity. This tool provides an outlook of the potential for a Public Safety Power Shutoff (PSPS) event in the next 7 days. It is not a fire danger forecast, PSPS decisions are made at more granular levels than provided here; thus, only a portion of a county may experience a PSPS event.

Day 0 Wed 5/10/2023			Day 1 Thu 5/11/2023			Day 2 Fri 5/12/2023			Day 3 Sat 5/13/2023			Day 4 Sun 5/14/2023			Day 5 Mon 5/15/2023			Day 6 Tue 5/16/2023		
Elevated	PSPS Watch	PSPS Warning	Elevated	PSPS Watch	PSPS Warning	Elevated	PSPS Watch	PSPS Warning	Elevated	PSPS Watch	PSPS Warning	Elevated	PSPS Watch	PSPS Warning	Elevated	PSPS Watch	PSPS Warning	Elevated	PSPS Watch	PSPS Warning
			Humboldt				Humboldt													
			Trinity				Trinity													
			Colusa				Colusa													
			Glenn				Glenn													
			Lassen				Lassen													
			Tehama				Tehama													
			Mendocino				Mendocino													
			Sonoma				Sonoma													
			Lake				Lake													
			Napa				Napa													
			Butte				Butte													
			Plumas				Plumas													
			Santa Clara				Santa Clara													
			Alameda				Alameda													
			Mariposa				Mariposa													
			Kern				Kern													

EP&R | Exercise Exercise Exercise – 2023 PSPS TTX

- Red Flag Warning issued for most of the northern interior, Bay Area and far South
- Start: 1000 hours – May 11th
- End: 1800 hours – May 12th
- Due to gusty east-northeast winds and low relative humidity
- Note: Timing extends beyond the period of wind risk due to low humidity values



National Weather Service

National Oceanic and Atmospheric Administration

Home Spot Forecast ▾ Forecasts/Outlooks ▾ Current Conditions ▾ Fire Status ▾ Fuels ▾ KML ▾ Contact/Other Info ▾ Permalink

CALIFORNIA FIRE WEATHER

This page is an interagency effort providing convenient access to Emergency Command Center Dispatch Area (ECCDA) Radio forecasts, specific National Weather Service Fire Weather Planning Forecasts (FWZ) and National Weather Service Red Flag Warnings and Fire Weather Watches for California. The information available here is targeted for fire suppression, land management and emergency response agencies and their staff. Information about the [current wildfires](#) burning in California can be obtained from [Cal Fire](#) or the [National Interagency Fire Center](#).

Note:

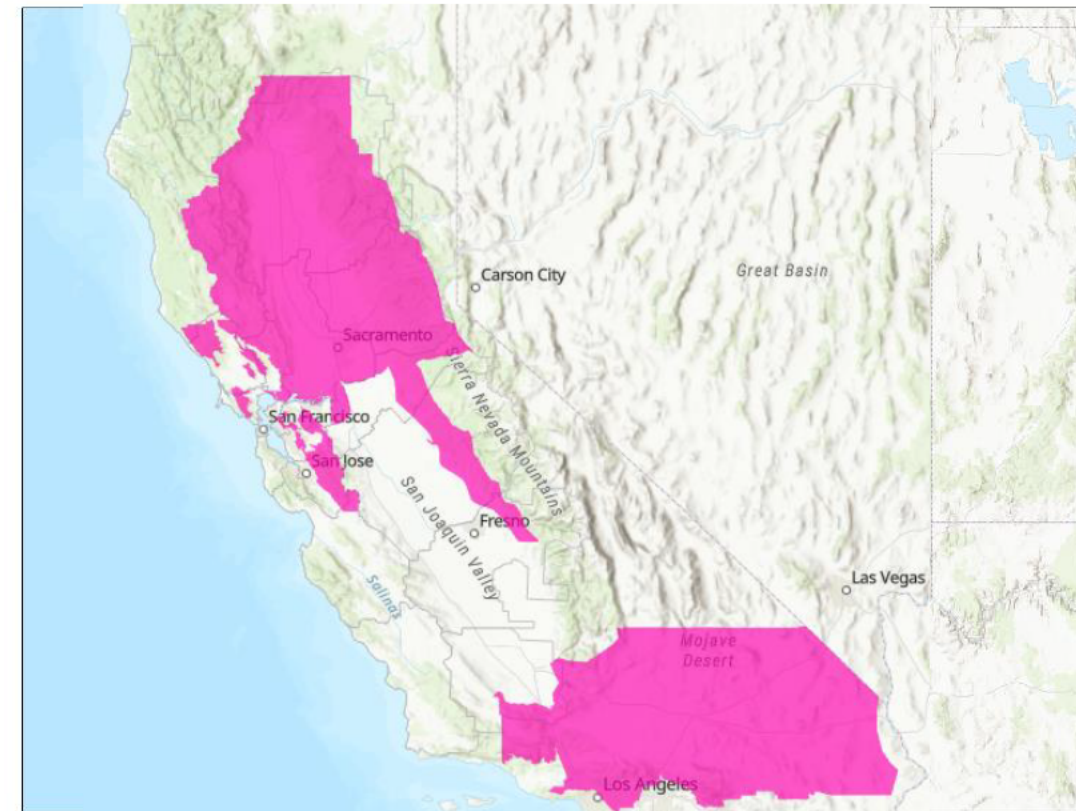
Fire Weather Zone changes for EKA, STO, and REV on 3/3/2020.

Lake County moves from STO to EKA office on 3/3/2020.

Please email [webmaster](#) for any problems with the web page

The map will display the [detailed](#) hazards area of Red Flag Warnings and Fire Weather Watches which may include all or portions of a NWS Fire Weather Zone.

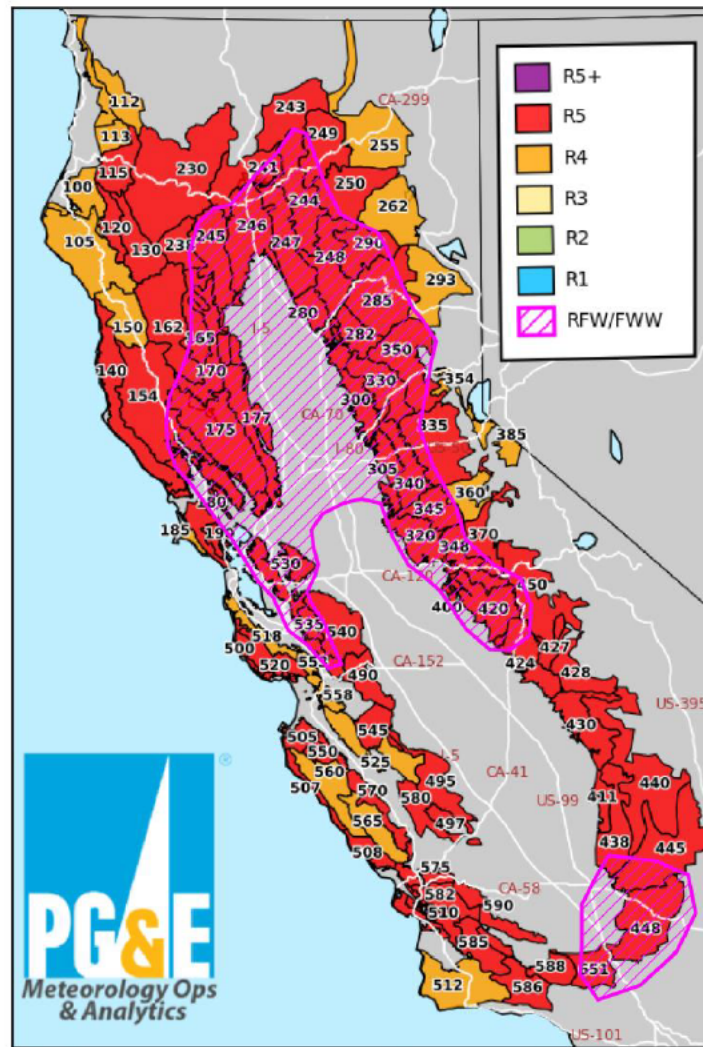
Welcome to the California Fire Weather Page



Note: ECCDA Forecast Summaries are issued no later than 945 a.m. and 400 p.m. daily during high fire season and low season are issued no later than 4 p.m. Monday through Friday (excluding holidays).

Please consult the latest [NWS Fire Weather Planning Forecasts](#) and [Red Flag Warning and Fire Weather Watches](#) for the latest information 24 hours a day.

PG&E Utility Fire Potential Index Ratings
Valid for 05/12/2023



PG&E's Fire Potential Index is intended for the exclusive use of PG&E and is proprietary to PG&E. PG&E, nor their parent corporations or affiliates, nor any person acting on their behalf (a) makes any warranty, expressed or implied, with respect to the use of PG&E's Fire Potential Index, or (b) assumes any liability with respect to the use of PG&E's Fire Potential Index. This forecast is intended and has been customized for PG&E utility operations and should not be used for any other purpose or by any other entity. Do not share this information without authorization.

Predictive Services Forecast



North Ops 7-day Significant Fire Potential Outlook

Issued by North Ops Predictive Services, Redding CA

Published: Wednesday, May 10, 2023

Predictive Service Area (PSA)	Wed 10 May	Thu 11 May	Fri 12 May	Sat 13 May	Sun 14 May	Mon 15 May	Tue 16 May	Wed 17 May
NC01 - North Coast								
NC02 - Mid Coast to Mendocino		W	W					
NC03A - Bay Marine		W	W					
NC03B - Diablo-Santa Cruz Mtns		W	W					
NC04 - Northwestern Mtn		W	W					
NC05 - Sac Valley/Foothills		W	W					
NC06 - NE California								
NC07 - Northern Sierras		W	W					
NC08 - Far Eastside								



Predictive Services Forecast



**Predictive
Services**

National Predictive Services Forecast
California South Ops

Published: Wednesday, May 10, 2023

Predictive Service Area (PSA)	Wed 10 May	Thu 11 May	Fri 12 May	Sat 13 May	Sun 14 May	Mon 15 May	Tue 16 May	Wed 17 May
SC01 - Eastern Sierra								
SC02 - Central Sierra		W	W					
SC03 - Southern Sierra		W	W					
SC04 - Sierra Foothills		W	W					
SC05 - Central Valley		W	W					
SC06 - Central Coast Interior								
SC07 - Central Coast								
SC08 - South Coast			W					
SC09 - Western Mountains		W	W					
SC10 - Eastern Mountains		W	W					
SC11 - Southern Mountains			W					
SC12 - Lower Deserts								
SC13 - Eastern Deserts								
SC14 - Central Mojave								
SC15 - Upper Deserts								
SC16 - Northern Deserts								

Legend:

Fuel Dryness

- Moist - Little no risk for large fires
- Dry - Low risk of large fires in the absence of a "High Risk" event.
- Very Dry - Low/Moderate risk of large fires in the absence of a "High Risk" event.
- Data Unavailable.

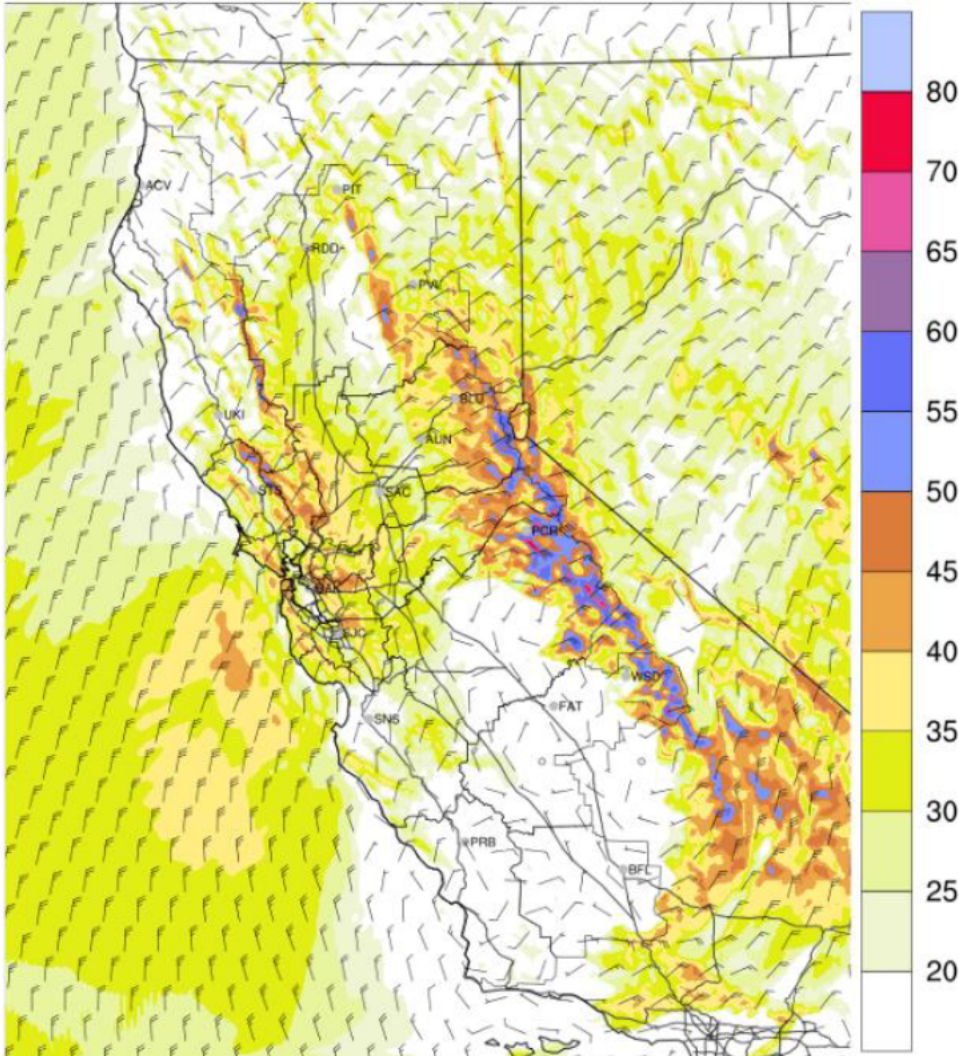
High Risk Days

- At least a 20% chance of a "Large Fire" due to a combination of either "Dry" or "Very Dry" Fuel Dryness and an Ignition Trigger. High Risk Days will include the symbol indicating the type of event.
- At least a 20% chance of a new "Large Fire" or significant growth on existing fires due to a combination of either "Dry" or "Very Dry" Fuel Dryness and a Critical Burn Environment. High Risk Days will include the symbol indicating the type of event.

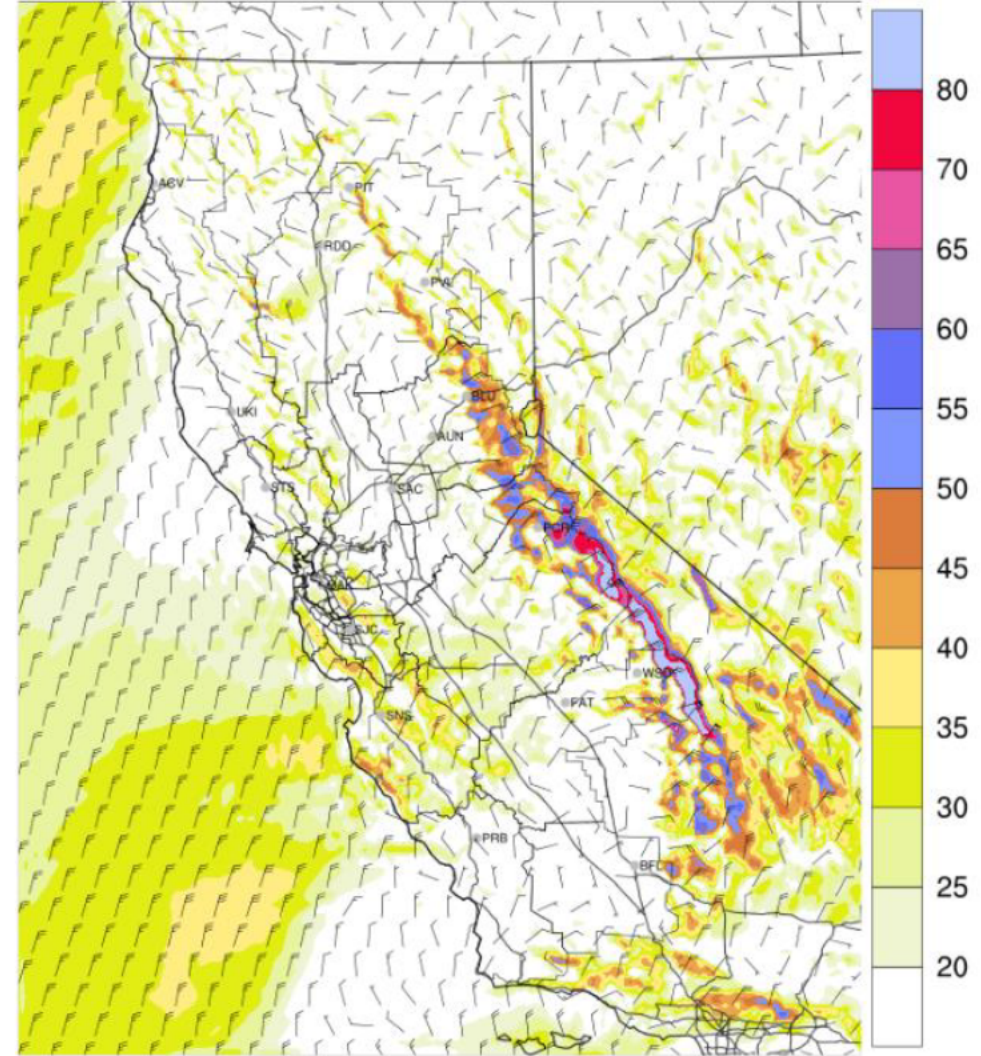


Exercise Exercise Exercise – 2023 PSPS TTX

Forecasted Winds

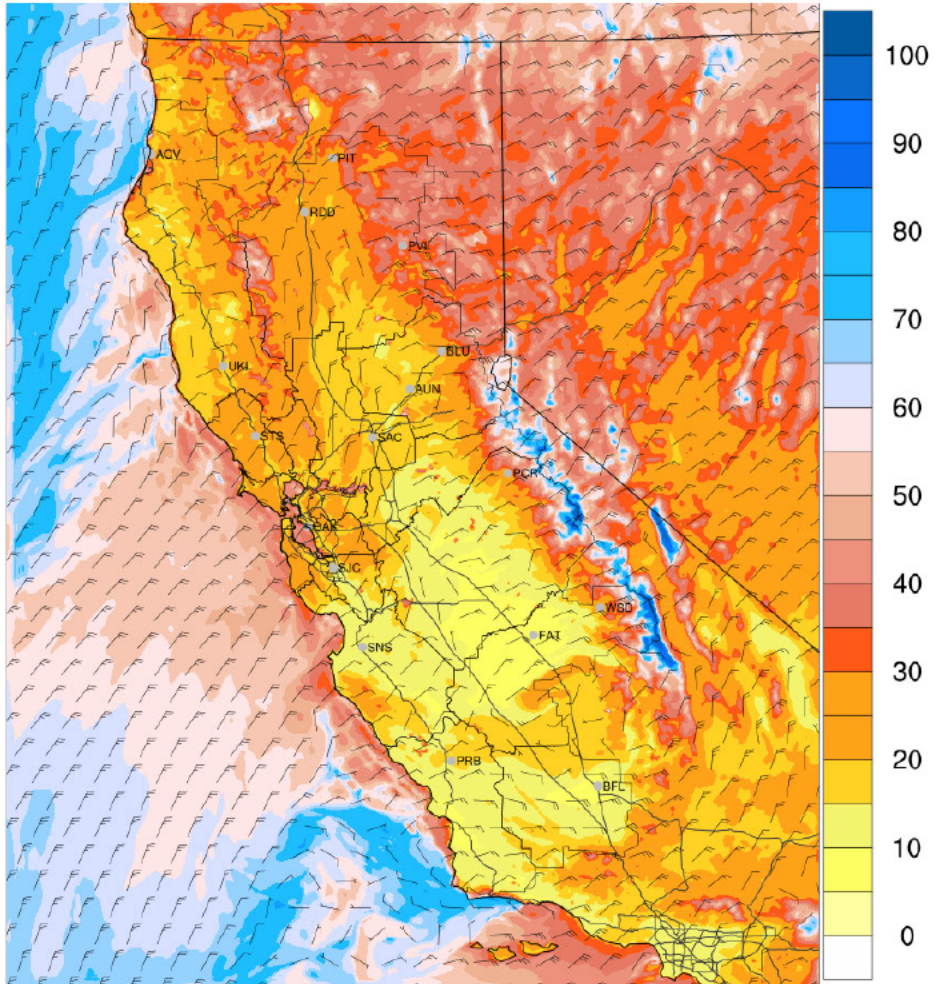


Thursday Evening

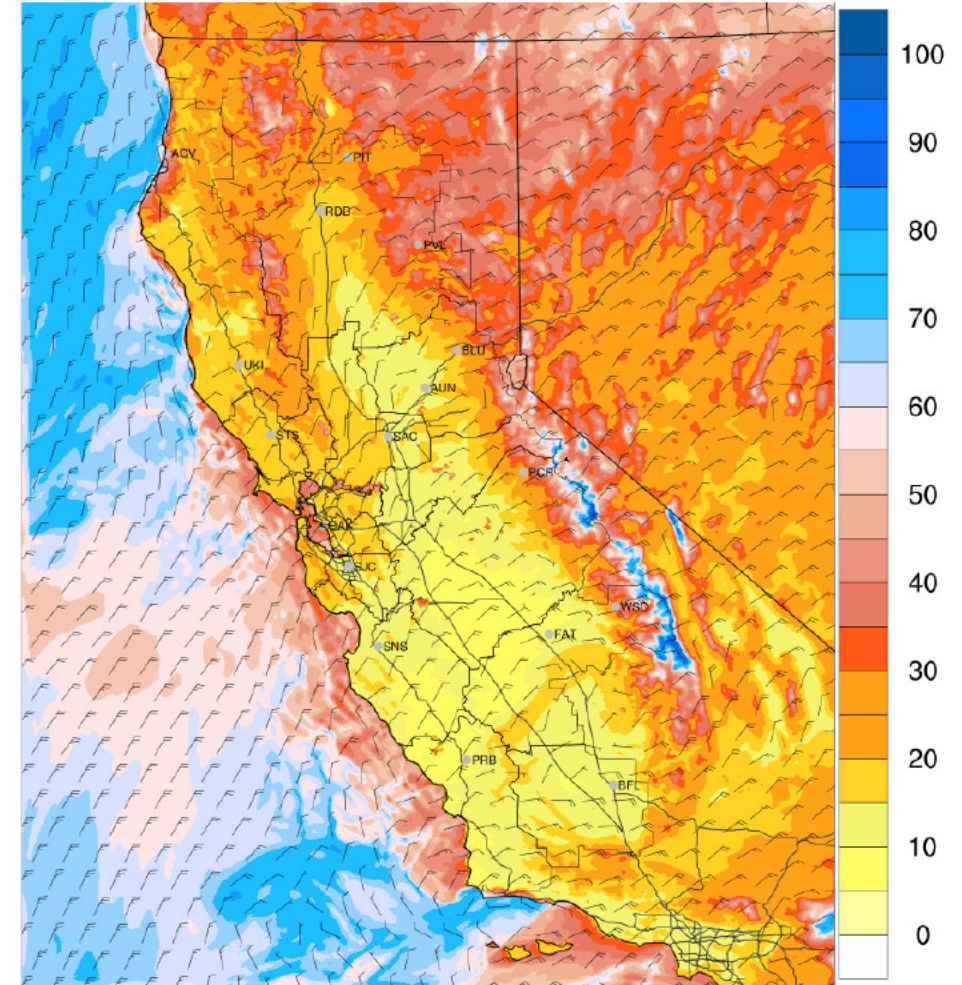


Exercise Exercise Exercise – 2023 PSPS TTX

Relative Humidity



Thursday Evening





EP&R | Exercise Exercise Exercise – 2023 PSPS TTX

Current Scope (2023-05-11-V-02)

Start

1600 hours Thursday, May 11

End

0800 – 1000 hours Friday, May 12

2023-05-11-V-02

time_place_id

2023-05-11-TP-02

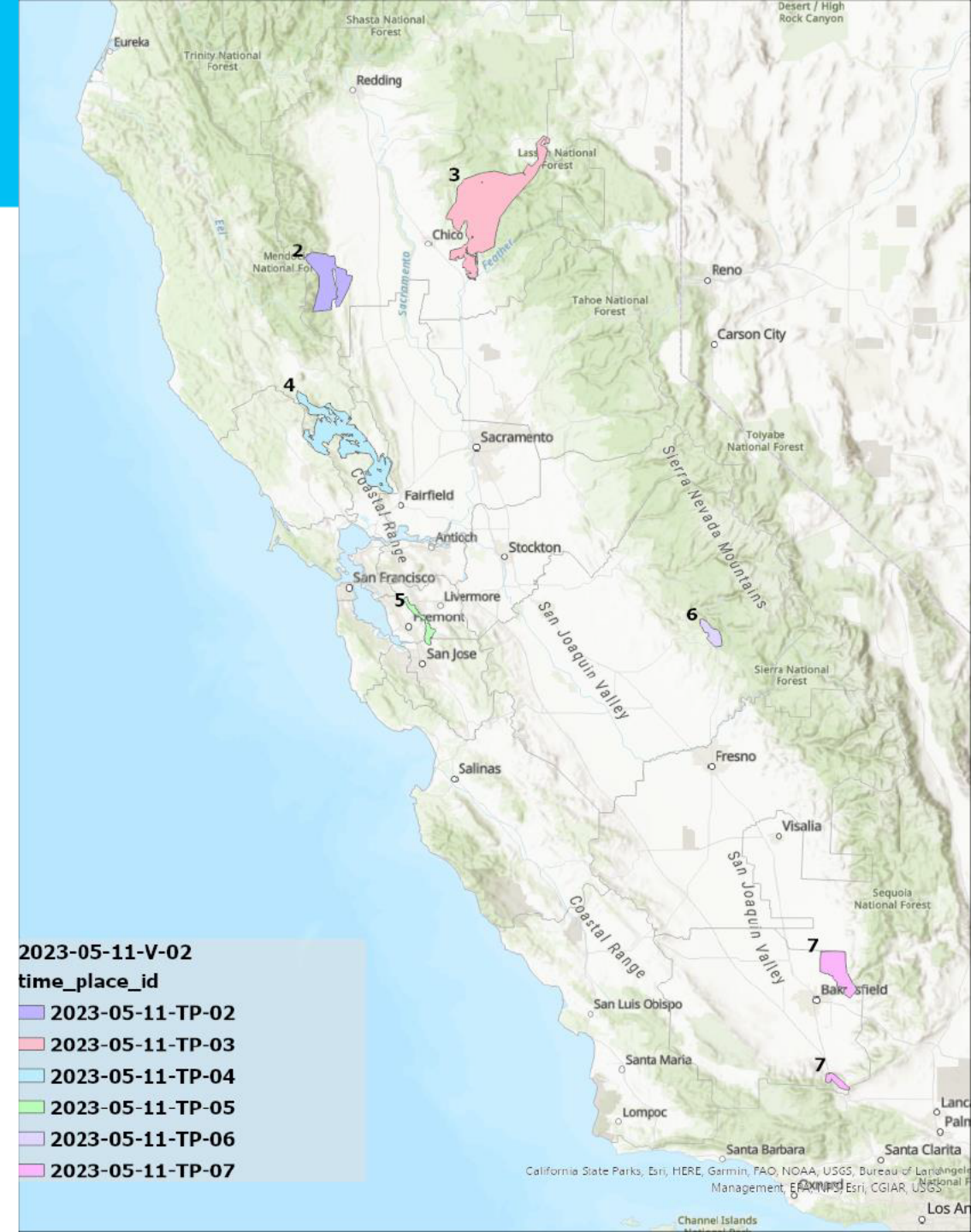
2023-05-11-TP-03

2023-05-11-TP-04

2023-05-11-TP-05

2023-05-11-TP-06

2023-05-11-TP-07





EP&R | Exercise Exercise Exercise – 2023 PSPS TTX

DSO SOPP Forecast

DSO SOPP Model Forecast

Issued: Wednesday, May 10, 2023 08:00

Transformer Level Outages and Above

	Wednesday 5/10/2023				Thursday 5/11/2023				Friday 5/12/2023				Saturday 5/13/2023			
	SO	CESO	TM	CR	SO	CESO	TM	CR	SO	CESO	TM	CR	SO	CESO	TM	CR
Outages by Division																
North Coast	11	1400	7	4	28	5700	19	13	21	3800	16	10	11	1400	8	5
Humboldt	5	500	3	2	8	700	6	4	6	500	5	3	4	400	3	2
Sonoma	3	400	2	1	8	1500	6	4	6	700	5	3	3	400	2	1
North Bay	3	500	2	1	12	3500	7	5	9	2600	6	4	4	600	3	2
North Valley & Sierra	18	1500	11	7	37	6000	22	15	29	3900	17	11	18	1400	12	7
North Valley	6	400	5	3	17	3200	12	8	13	2500	9	6	7	500	5	3
Sierra	5	500	3	2	7	700	3	2	6	500	3	2	3	300	2	1
Sacramento	7	600	3	2	13	1100	7	5	10	800	5	3	8	600	5	3
Bay Area	7	2100	10	5	22	6900	14	9	21	6300	13	8	9	2600	10	5
San Francisco	1	400	2	1	2	900	2	1	2	900	2	1	1	400	2	1
East Bay	1	500	2	1	4	1800	3	2	3	1400	2	1	1	500	2	1
Diablo	2	500	2	1	5	1200	3	2	5	1200	3	2	3	700	2	1
Peninsula	2	400	2	1	4	900	3	2	5	1100	3	2	2	400	2	1
Mission	1	300	2	1	7	2100	3	2	6	1700	3	2	2	500	2	1
South Bay & Central Coast	12	2000	9	5	26	4300	16	11	21	3500	15	10	13	2100	11	6
De Anza	2	400	2	1	5	900	3	2	4	700	3	2	2	400	2	1
San Jose	2	500	2	1	6	1400	3	2	5	1200	3	2	2	500	2	1
Central Coast	5	700	3	2	10	1400	7	5	8	1100	6	4	6	800	5	3
Los Padres	3	400	2	1	5	600	3	2	4	500	3	2	3	400	2	1
Central Valley	24	2600	13	8	40	5300	20	13	36	4700	19	12	25	2700	14	9
Stockton	5	600	3	2	6	800	3	2	6	800	3	2	5	600	3	2
Yosemite	6	500	3	2	11	1000	5	3	10	900	5	3	6	500	3	2
Fresno	9	1000	5	3	12	1300	6	4	11	1200	6	4	9	1000	5	3
Kern	4	500	2	1	11	2200	6	4	9	1800	5	3	5	600	3	2
PG&E SYSTEM	72	9600	50	29	163	27200	91	61	128	22200	80	51	76	10200	55	32

Notes: SO = Sustained Outages, CESO = Customers Experiencing Sustained Outages, TM = Troublemakers, CR = Crews

DSO SOPP Model Forecast Timing, by Division

	Wednesday 5/10/2023	Thursday 5/11/2023	Friday 5/12/2023	Saturday 5/13/2023
	Timing	Timing	Timing	Timing
Timing by Division				
Humboldt		16:00 - 24:00	00:00 - 08:00	
Sonoma		16:00 - 24:00	00:00 - 08:00	
North Bay		16:00 - 24:00	00:00 - 08:00	
North Valley		16:00 - 24:00	00:00 - 08:00	
Sierra				
Sacramento		16:00 - 24:00	00:00 - 08:00	
San Francisco				
East Bay				
Diablo				
Peninsula				
Mission		16:00 - 24:00	00:00 - 08:00	
De Anza				
San Jose		16:00 - 24:00	00:00 - 08:00	
Central Coast				
Los Padres				
Stockton				
Yosemite		16:00 - 24:00	00:00 - 08:00	
Fresno				
Kern		16:00 - 24:00	00:00 - 08:00	

Note: Timing reflects the risk period of outage producing weather for any division at elevated Cat 1 or above

DSO SOPP 911 - Standby Event Forecast

Issued: 5/10/23 8:00	Wednesday 5/10/2023	Thursday 5/11/2023	Friday 5/12/2023	Saturday 5/13/2023
911 Events by Division	911	911	911	911
North Coast	4	11	9	4
Humboldt	2	2	2	1
Sonoma	1	3	2	1
North Bay	1	6	5	2
North Valley & Sierra	5	10	8	5
North Valley	2	5	4	2
Sierra	1	2	2	1
Sacramento	2	3	2	2
Bay Area	5	13	11	6
San Francisco	1	1	1	1
East Bay	1	3	2	1
Diablo	1	3	3	2
Peninsula	1	2	2	1
Mission	1	4	3	1
South Bay & Central Coast	5	8	6	5
De Anza	1	2	1	1
San Jose	1	2	2	1
Central Coast	2	3	2	2
Los Padres	1	1	1	1
Central Valley	8	10	9	8
Stockton	1	2	2	1
Yosemite	2	2	2	2
Fresno	3	3	3	3
Kern	2	3	2	2
PG&E SYSTEM	27	52	43	28

PG&E Internal Use Only

Meteorology Operations & Analytics

Note: Numbers indicate the expected number of 911-standby events

DSO SOPP 911 - Standby Event Timing

	Wednesday 5/10/2023	Thursday 5/11/2023	Friday 5/12/2023	Saturday 5/13/2023
Timing by Division	911	911	911	911
Humboldt		16:00 - 24:00	00:00 - 08:00	
Sonoma		16:00 - 24:00	00:00 - 08:00	
North Bay		16:00 - 24:00	00:00 - 08:00	
North Valley		16:00 - 24:00	00:00 - 08:00	
Sierra				
Sacramento		16:00 - 24:00	00:00 - 08:00	
San Francisco				
East Bay				
Diablo				
Peninsula				
Mission		16:00 - 24:00	00:00 - 08:00	
De Anza				
San Jose		16:00 - 24:00	00:00 - 08:00	
Central Coast				
Los Padres				
Stockton				
Yosemite		16:00 - 24:00	00:00 - 08:00	
Fresno				
Kern		16:00 - 24:00	00:00 - 08:00	

PG&E Internal Use Only

Meteorology Operations & Analytics

Note: Timing coincides with DSO SOPP Model timing for adverse weather



EP&R | M2 - Readiness Posture, Event Scoping, Planning and Notification

Q9: How does the Temp Gen Branch determine which pre-planned sites to energize?

How does this vary by type of site, i.e., substation microgrid, distribution microgrid, pre-planned backup power support, such as a hospital.

Q10. What are the requirements to approve land acquisition for CRC and other Emergency Field Sites?

Q11. Please talk about the main Finance activities and objectives at this stage of the event. Also, could you comment on cost recovery (e.g., how are PSPS costs recovered?)



EP&R | M2 - Readiness Posture, Event Scoping, Planning and Notification

Q12. What actions do REC/OECs take to activate?

Q13. In which meeting does the EOC Commander approve Warning notifications?

What are the key changes in the decision-making process in 2023?

Q14. What is the role of the GIS Tech Specialist in a PSPS Event?



EP&R | M2 - Readiness Posture, Event Scoping, Planning and Notification

Q15. Who would field crews work with to ensure compliance with requirements for protection of cultural, natural and historical resources/sites?

Q16. If a county has a critical infrastructure item that needs to be escalated to PG&E's attention, to whom should you direct your concerns?



EP&R | M2 - Readiness Posture, Event Scoping, Planning and Notification

Q17. What are the different processes of communicating with Transmission Customers in the event they are impacted by a PSPS Event affecting PG&E's assets?

Q18. What is the process for identifying impacts to Power Generation facilities based on PSPS scope?

Lunch Break

We will begin again at 1230



Module 3

De-energization & Notifications





- Issued: 5/11/2023 7:00



Day 0 Thu 5/11/2023			Day 1 Fri 5/12/2023			Day 2 Sat 5/13/2023			Day 3 Sun 5/14/2023			Day 4 Mon 5/15/2023			Day 5 Tue 5/16/2023			Day 6 Wed 5/17/2023		
Elevated	PSPS Watch	PSPS Warning	Elevated	PSPS Watch	PSPS Warning	Elevated	PSPS Watch	PSPS Warning	Elevated	PSPS Watch	PSPS Warning	Elevated	PSPS Watch	PSPS Warning	Elevated	PSPS Watch	PSPS Warning	Elevated	PSPS Watch	PSPS Warning
	Colusa			Colusa																
	Glenn			Glenn																
	Lassen			Lassen																
	Tehama			Tehama																
	Sonoma			Sonoma																
	Lake			Lake																
	Napa			Napa																
	Butte			Butte																
	Plumas			Plumas																
	Santa Clara			Santa Clara																
	Alameda			Alameda																
	Mariposa			Mariposa																
	Kern			Kern																

- **Red Flag Warning issued for most of the northern interior, Bay Area and far South**
- **Start: 1000 hours – May 11th**
- **End: 1800 hours – May 12th**
- **Due to gusty east-northeast winds and low relative humidity**
- **Note: Timing extends beyond the period of wind risk due to low humidity values**



National Weather Service

National Oceanic and Atmospheric Administration

[Home](#)
[Spot Forecast](#)
[Forecasts/Outlooks](#)
[Current Conditions](#)
[Fire Status](#)
[Fuels](#)
[KML](#)
[Contact/Other Info](#)
[Permalink](#)

CALIFORNIA FIRE WEATHER

This page is an interagency effort providing convenient access to Emergency Command Center Dispatch Area (ECCDA) Radio forecasts, specific National Weather Service Fire Weather Planning Forecasts (FWZ) and National Weather Service Red Flag Warnings and Fire Weather Watches for California. The information available here is targeted for fire suppression, land management and emergency response agencies and their staff. Information about the [current wildfires](#) burning in California can be obtained from [Cal Fire](#) or the [National Interagency Fire Center](#).

Note:

Fire Weather Zone changes for EKA, STO, and REV on 3/3/2020.

Lake County moves from STO to EKA office on 3/3/2020.

Please email [webmaster](#) for any problems with the web page

The map will display the [detailed](#) hazards area of Red Flag Warnings and Fire Weather Watches which may include all or portions of a NWS Fire Weather Zone.

Welcome to the California Fire Weather Page

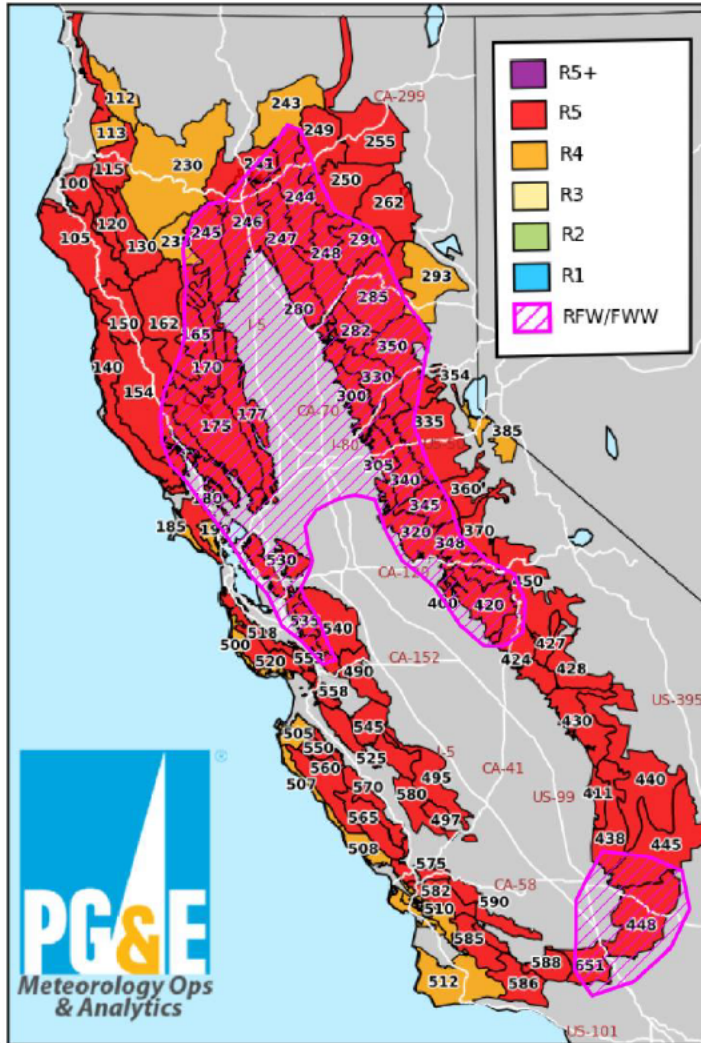


Note: ECCDA Forecast Summaries are issued no later than 945 a.m. and 400 p.m. daily during high fire season and low season are issued no later than 4 p.m. Monday through Friday (excluding holidays).

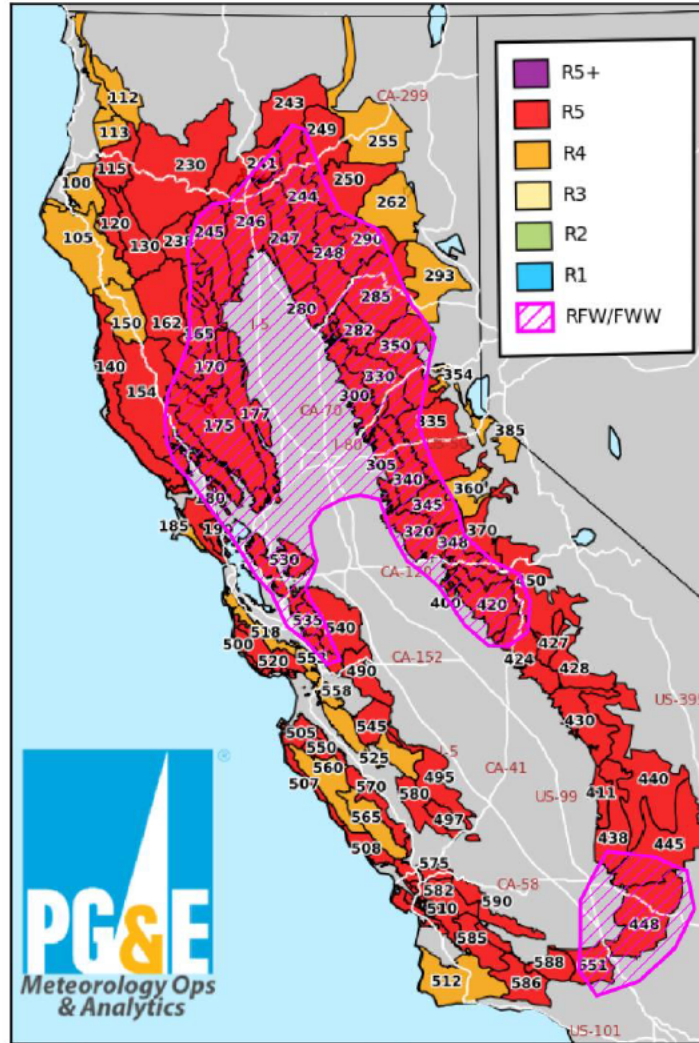
Please consult the latest [NWS Fire Weather Planning Forecasts](#) and [Red Flag Warning and Fire Weather Watches](#) for the latest information 24 hours a day.

EP&R | Exercise Exercise Exercise – 2023 PSPS TTX

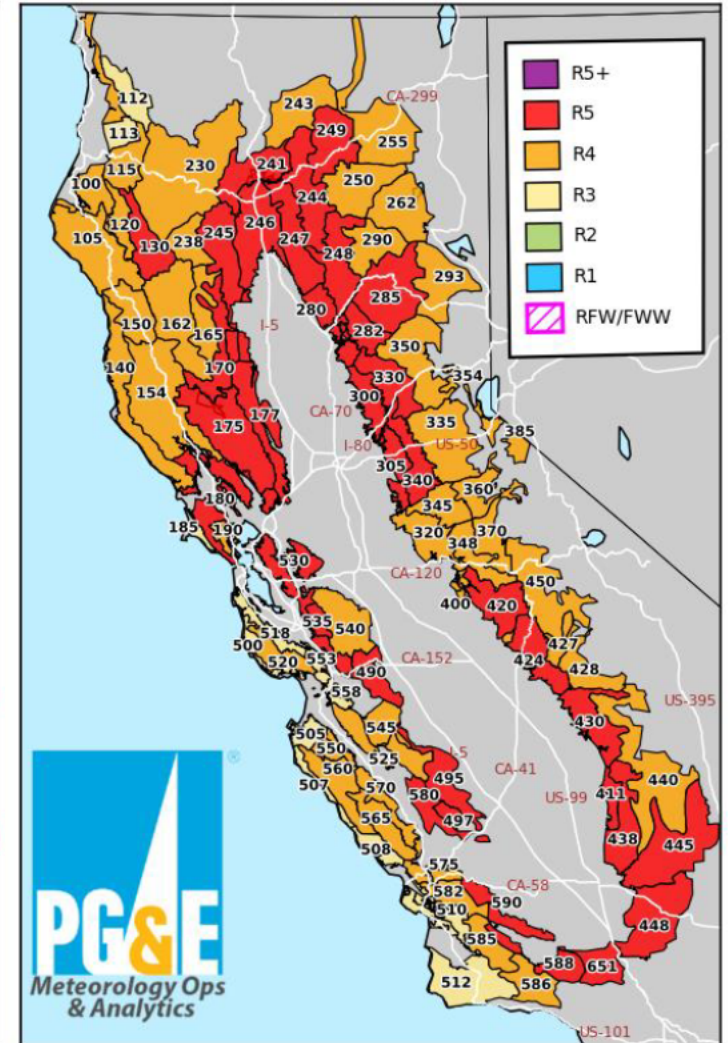
PG&E Utility Fire Potential Index Ratings
Valid for 05/11/2023



PG&E Utility Fire Potential Index Ratings
Valid for 05/12/2023



PG&E Utility Fire Potential Index Ratings
Valid for 05/13/2023



PG&E's Fire Potential Index is intended for the exclusive use of PG&E and is proprietary to PG&E. PG&E, nor their parent corporations or affiliates, nor any person acting on their behalf (a) makes any warranty, expressed or implied, with respect to the use of PG&E's Fire Potential Index; or (b) assumes any liability with respect to the use of PG&E's Fire Potential Index. This forecast is intended and has been customized for PG&E utility operations and should not be used for any other purpose or by any other entity. Do not share this information without authorization.

PG&E's Fire Potential Index is intended for the exclusive use of PG&E and is proprietary to PG&E. PG&E, nor their parent corporations or affiliates, nor any person acting on their behalf (a) makes any warranty, expressed or implied, with respect to the use of PG&E's Fire Potential Index; or (b) assumes any liability with respect to the use of PG&E's Fire Potential Index. This forecast is intended and has been customized for PG&E utility operations and should not be used for any other purpose or by any other entity. Do not share this information without authorization.

PG&E's Fire Potential Index is intended for the exclusive use of PG&E and is proprietary to PG&E. PG&E, nor their parent corporations or affiliates, nor any person acting on their behalf (a) makes any warranty, expressed or implied, with respect to the use of PG&E's Fire Potential Index; or (b) assumes any liability with respect to the use of PG&E's Fire Potential Index. This forecast is intended and has been customized for PG&E utility operations and should not be used for any other purpose or by any other entity. Do not share this information without authorization.

Predictive Services Forecast



North Ops 7-day Significant Fire Potential Outlook

Issued by North Ops Predictive Services, Redding CA

Published: Thursday, May 11, 2023

Predictive Service Area (PSA)	Thu 11 May	Fri 12 May	Sat 13 May	Sun 14 May	Mon 15 May	Tue 16 May	Wed 17 May	Thu 18 May
NC01 - North Coast								
NC02 - Mid Coast to Mendocino	W	W						
NC03A - Bay Marine	W	W						
NC03B - Diablo-Santa Cruz Mtns	W	W						
NC04 - Northwestern Mtn	W	W						
NC05 - Sac Valley/Foothills	W	W						
NC06 - NE California								
NC07 - Northern Sierras	W	W						
NC08 - Far Eastside								



Predictive Services Forecast



**Predictive
Services**

National Predictive Services Forecast
California South Ops

Published: Thursday, May 11, 2023

Predictive Service Area (PSA)	Thu 11 May	Fri 12 May	Sat 13 May	Sun 14 May	Mon 15 May	Tue 16 May	Wed 17 May	Thu 18 May
SC01 - Eastern Sierra								
SC02 - Central Sierra	W	W						
SC03 - Southern Sierra	W	W						
SC04 - Sierra Foothills	W	W						
SC05 - Central Valley	W	W						
SC06 - Central Coast Interior								
SC07 - Central Coast								
SC08 - South Coast		W						
SC09 - Western Mountains	W	W						
SC10 - Eastern Mountains	W	W						
SC11 - Southern Mountains		W						
SC12 - Lower Deserts								
SC13 - Eastern Deserts								
SC14 - Central Mojave								
SC15 - Upper Deserts								
SC16 - Northern Deserts								

Legend:

Fuel Dryness

- Moist - Little no risk for large fires
- Dry - Low risk of large fires in the absence of a "High Risk" event
- Very Dry - Low/Moderate risk of large fires in the absence of a "High Risk" event
- Data Unavailable

High Risk Days

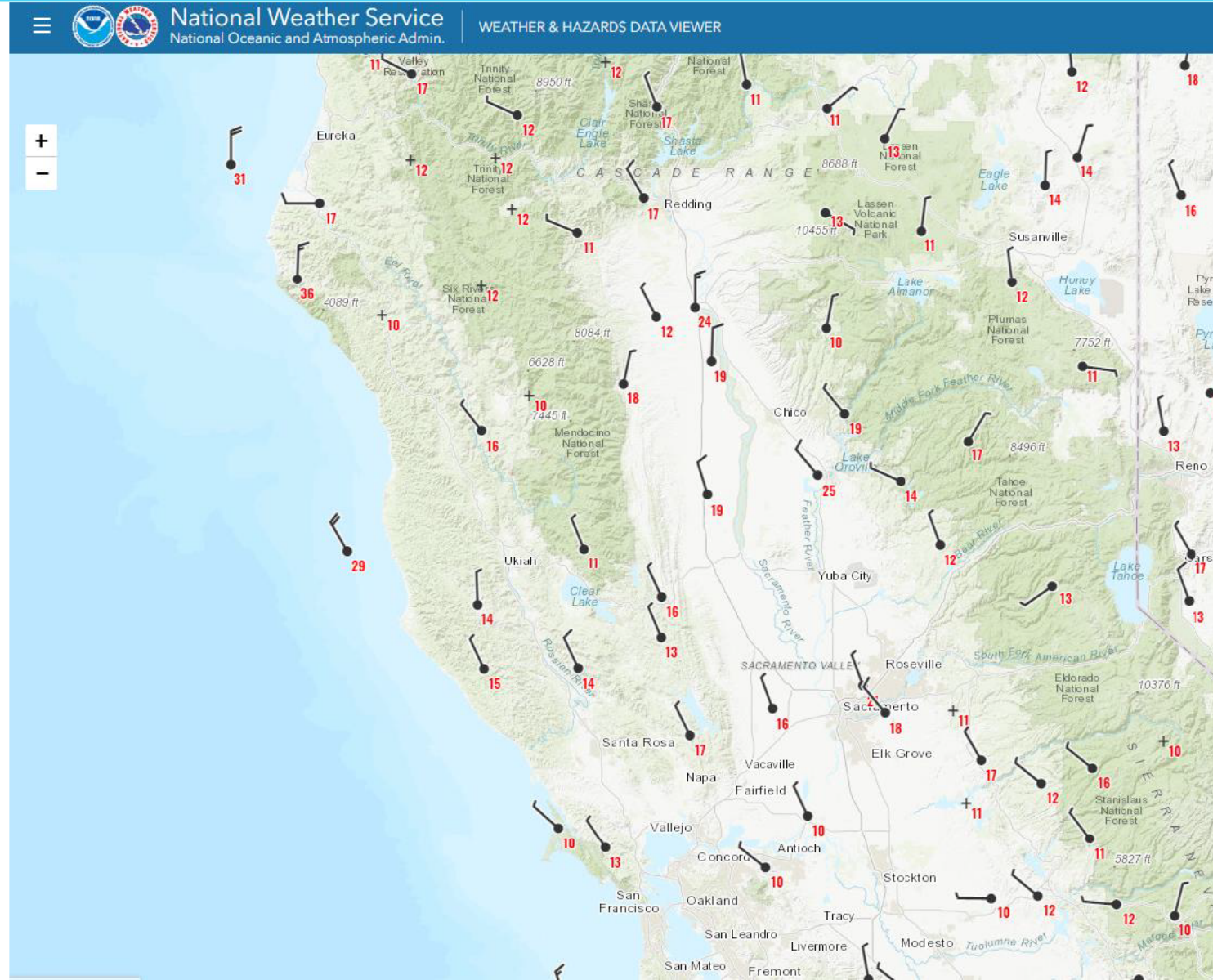
- At least a 20% chance of a "Large Fire" due to a combination of either "Dry" or "Very Dry" Fuel Dryness and an Ignition Trigger. High Risk Days will include the symbol indicating the type of event.
- At least a 20% chance of a new "Large Fire" or significant growth on existing fires due to a combination of either "Dry" or "Very Dry" Fuel Dryness and a Critical Burn Environment. High Risk Days will include the symbol indicating the type of event.





EP&R | Exercise Exercise Exercise – 2023 PSPS TTX

Current Winds



[illegible]

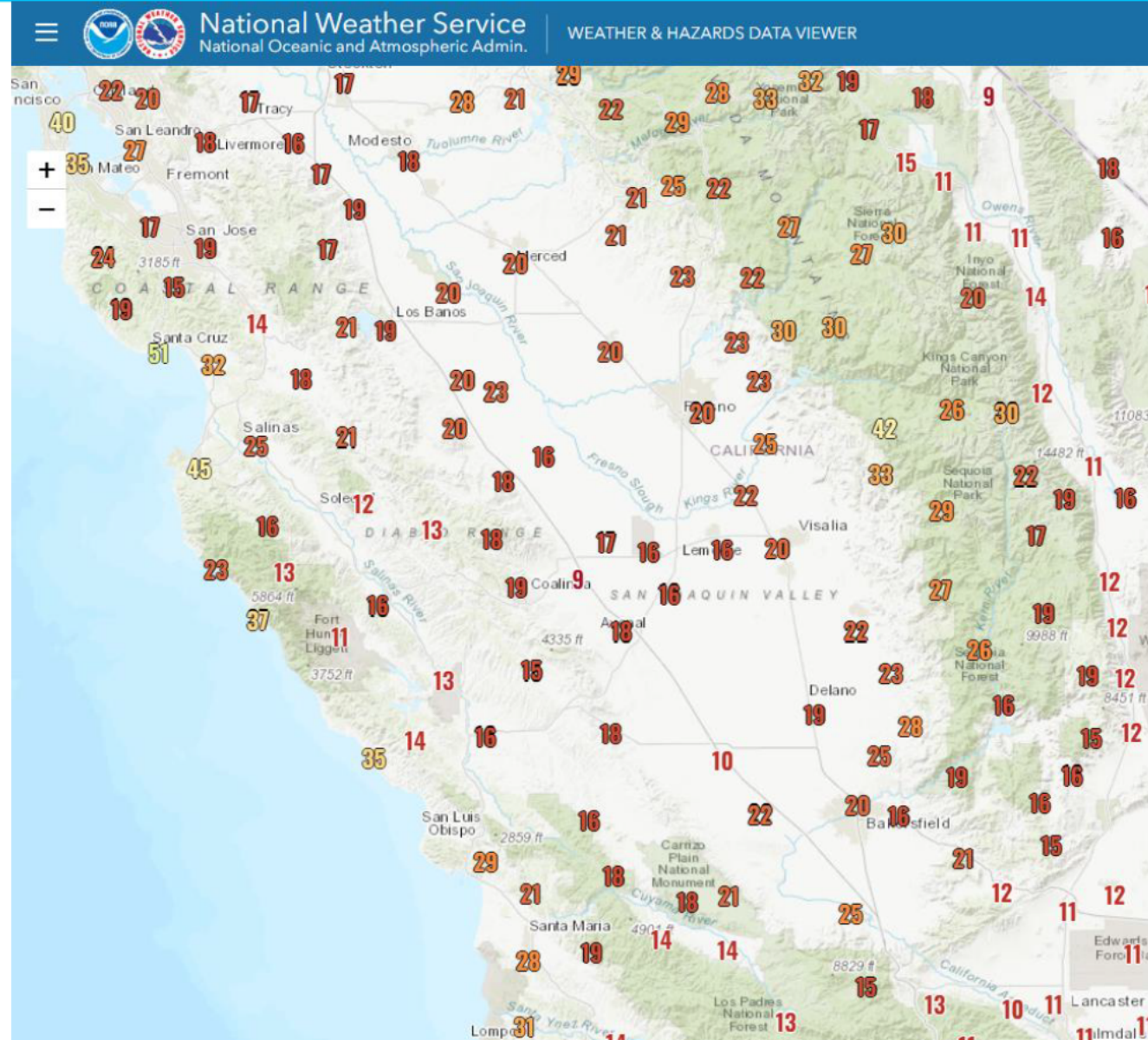


The map displays precipitation data for California, with values ranging from 1 to 24 inches. The data is presented as a grid of numbers across the state, with higher values (red and orange) concentrated in the Central Valley and lower values (blue and green) in the coastal and mountain regions. Major cities and geographical features are labeled, providing context for the precipitation distribution.



EP&R | Exercise Exercise Exercise – 2023 PSPS TTX

Relative Humidity





EP&R | Exercise Exercise

Exercise – 2023 PSPS TTX

Current Scope (2023-05-11-V-02)

Start

1600 hours Thursday, May 11

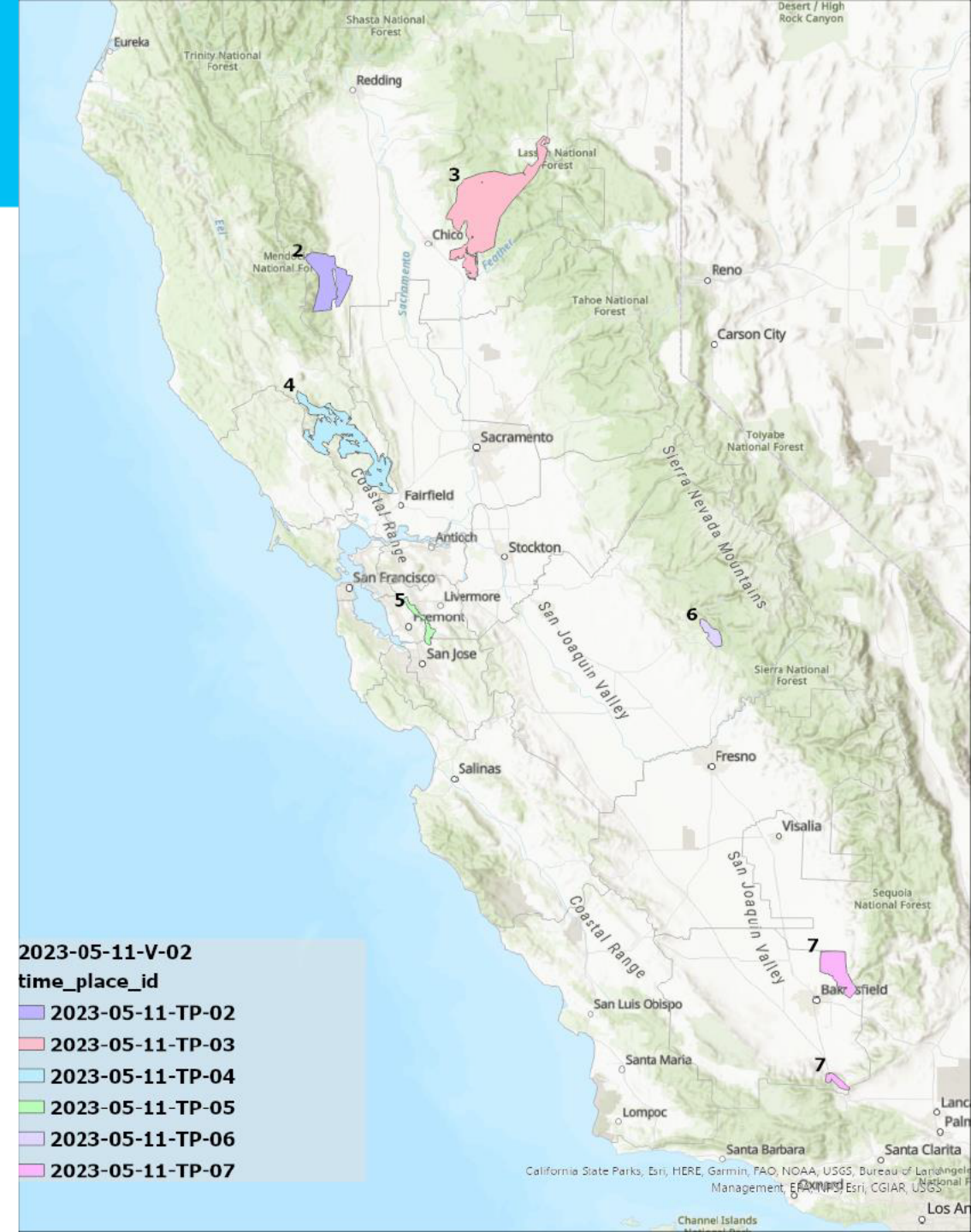
End

0800 – 1000 hours Friday, May 12

2023-05-11-V-02

time_place_id

- 2023-05-11-TP-02
- 2023-05-11-TP-03
- 2023-05-11-TP-04
- 2023-05-11-TP-05
- 2023-05-11-TP-06
- 2023-05-11-TP-07





EP&R | **Exercise Exercise Exercise** – 2023 PSPS TTX

Situational Summary

PSPS Potential Risk
Consequence

65

PSPS Potential
Benefit (Wildfire
Mitigation)

67,579

Potential Benefit :
Potential Risk

1038

Recommended
Approach

Indicates potential PSPS
benefit outweighs risk

Risk Ratio Per Circuit
(>1, PSPS Benefit
Outweighs Risk)

Dx Circuits: 45 (of 45)*
Tx Circuits: 9 (of 9)

As defined in PLAN_D-01

Aggregated
to event-
level

Key Factors

• PSPS Consequence

- Safety consequence factors in planned and unplanned widespread outage events across the US.
- Reliability consequence based on customer minutes interrupted
- Financial consequence based on execution and fixed customer cost per event
- Assumes maximum duration for each customer per circuit

• PSPS Benefit (Wildfire Mitigation)

- Safety consequence based on population impacted from fire spread simulation
- Reliability consequence not considered
- Financial consequence based on buildings impacted from fire spread simulation
- Assumes an ignition on each circuit based on the maximum consequence modeled by TechnoSylva

- (1) dx circuit had no customers nor fire impact, hence risk ratio undefined
- (1) dx circuit had no fire impact as simulated by TechnoSylva consequence model

$$\frac{\text{PSPS Potential Benefit (wildfire risk)}}{\text{PSPS Potential Risk}} > 1$$
 Indicates potential PSPS benefit outweighs risk

$$\frac{\text{PSPS Potential Benefit (wildfire risk)}}{\text{PSPS Potential Risk}} < 1$$
 Indicates potential risk may outweigh potential benefit



EP&R | Exercise Exercise Exercise – 2023 PSPS TTX

DSO SOPP Forecast

DSO SOPP Model Forecast

Issued: Thursday, May 11, 2023 08:00

Transformer Level Outages and Above

	Thursday 5/11/2023				Friday 5/12/2023				Saturday 5/13/2023				Sunday 5/14/2023			
	SO	CESO	TM	CR	SO	CESO	TM	CR	SO	CESO	TM	CR	SO	CESO	TM	CR
Outages by Division	27	5600	18	12	21	3800	16	10	11	1400	8	5	10	1300	7	4
North Coast	7	600	5	3	6	500	5	3	4	400	3	2	4	400	3	2
Humboldt	8	1500	6	4	6	700	6	3	3	400	2	1	3	400	2	1
Sonoma	12	3500	7	5	9	2600	6	4	4	600	3	2	3	500	2	1
North Bay	37	5000	22	15	29	3900	17	11	18	1400	12	7	17	1300	12	7
North Valley & Sierra	16	3100	10	7	13	2500	9	6	7	500	5	3	6	400	5	3
Sierra	8	800	5	3	6	600	3	2	3	300	2	1	3	300	2	1
Sacramento	13	1100	7	5	10	800	5	3	8	600	5	3	8	600	5	3
Bay Area	22	6900	14	9	20	6100	12	7	9	2500	10	5	7	2100	10	5
San Francisco	2	900	2	1	2	900	2	1	1	400	2	1	1	400	2	1
East Bay	4	1800	3	2	3	1400	2	1	1	500	2	1	1	500	2	1
Diablo	5	1200	3	2	4	1000	2	1	3	700	2	1	2	600	2	1
Peninsula	4	900	3	2	5	1100	3	2	2	400	2	1	2	400	2	1
Mission	7	2100	3	2	6	1700	3	2	2	600	2	1	1	300	2	1
South Bay & Central Coast	26	4300	16	11	21	3500	15	10	13	2100	11	6	12	2000	9	5
De Anza	5	900	3	2	4	700	3	2	2	400	2	1	2	400	2	1
San Jose	6	1400	3	2	5	1200	3	2	2	500	2	1	2	500	2	1
Central Coast	10	1400	7	5	8	1100	6	4	6	800	5	3	5	700	3	2
Los Padres	5	600	3	2	4	500	3	2	3	400	2	1	3	400	2	1
Central Valley	40	5300	20	13	35	4600	19	12	26	2800	14	9	25	2700	14	9
Stockton	6	800	3	2	6	800	3	2	5	600	3	2	5	600	3	2
Yosemite	11	1000	5	3	9	800	5	3	7	600	3	2	6	500	3	2
Fresno	12	1300	6	4	11	1200	6	4	9	1000	5	3	9	1000	5	3
Kern	11	2200	6	4	9	1800	5	3	5	600	3	2	6	600	3	2
PG&E SYSTEM	152	27100	90	60	126	21900	79	50	77	10300	55	32	71	9400	52	30

Notes: SO = Sustained Outages, CESO = Customers Experiencing Sustained Outages, TM = Troublemakers, CR = Crews

DSO SOPP Model Forecast Timing, by Division

	Thursday 5/11/2023	Friday 5/12/2023	Saturday 5/13/2023	Sunday 5/14/2023
	Timing	Timing	Timing	Timing
Timing by Division				
Humboldt				
Sonoma	16:00 - 24:00	00:00 - 08:00		
North Bay	16:00 - 24:00	00:00 - 08:00		
North Valley	16:00 - 24:00	00:00 - 08:00		
Sierra				
Sacramento	16:00 - 24:00	00:00 - 08:00		
San Francisco				
East Bay				
Diablo				
Peninsula				
Mission	16:00 - 24:00	00:00 - 08:00		
De Anza				
San Jose	16:00 - 24:00	00:00 - 08:00		
Central Coast				
Los Padres				
Stockton				
Yosemite	16:00 - 24:00	00:00 - 08:00		
Fresno				
Kern	16:00 - 24:00	00:00 - 08:00		

Note: Timing reflects the risk period of outage producing weather for any division at elevated Cat 1 or above

DSO SOPP 911 - Standby Event Forecast

Issued: 5/11/23 8:00	Thursday 5/11/2023	Friday 5/12/2023	Saturday 5/13/2023	Sunday 5/14/2023
911 Events by Division	911	911	911	911
North Coast	11	9	4	3
Humboldt	2	2	1	1
Sonoma	3	2	1	1
North Bay	6	5	2	1
North Valley & Sierra	9	8	5	5
North Valley	4	4	2	2
Sierra	2	2	1	1
Sacramento	3	2	2	2
Bay Area	13	10	6	5
San Francisco	1	1	1	1
East Bay	3	2	1	1
Diablo	3	2	2	1
Peninsula	2	2	1	1
Mission	4	3	1	1
South Bay & Central Coast	8	6	5	5
De Anza	2	1	1	1
San Jose	2	2	1	1
Central Coast	3	2	2	2
Los Padres	1	1	1	1
Central Valley	10	9	8	8
Stockton	2	2	1	1
Yosemite	2	2	2	2
Fresno	3	3	3	3
Kern	3	2	2	2
PG&E SYSTEM	51	42	28	26

PG&E Internal Use Only

Meteorology Operations & Analytics

Note: Numbers indicate the expected number of 911-standby events

DSO SOPP 911 - Standby Event Timing

	Thursday 5/11/2023	Friday 5/12/2023	Saturday 5/13/2023	Sunday 5/14/2023
Timing by Division	911	911	911	911
Humboldt				
Sonoma	16:00 - 24:00	00:00 - 08:00		
North Bay	16:00 - 24:00	00:00 - 08:00		
North Valley	16:00 - 24:00	00:00 - 08:00		
Sierra				
Sacramento	16:00 - 24:00	00:00 - 08:00		
San Francisco				
East Bay				
Diablo				
Peninsula				
Mission	16:00 - 24:00	00:00 - 08:00		
De Anza				
San Jose	16:00 - 24:00	00:00 - 08:00		
Central Coast				
Los Padres				
Stockton				
Yosemite	16:00 - 24:00	00:00 - 08:00		
Fresno				
Kern	16:00 - 24:00	00:00 - 08:00		

PG&E Internal Use Only

Meteorology Operations & Analytics

Note: Timing coincides with DSO SOPP Model timing for adverse weather



EP&R | M3 - De-Energization & Notifications

Q1. Describe the steps the PIO team takes to prepare notifications for media and internal stakeholders.

How does the PIO coordinate with Customer and Liaison sections to ensure alignment in external messaging?

Q2. Once de-energization occurs what are the key activities that IT would be involved in?

Once de-energization occurs, describe the actions the IT Branch leaders would be involved in



EP&R | M3 - De-Energization & Notifications

Q3. What are the parameters of permitting Vegetation Management crews to operate in the vicinity of PSPS-impacted circuits during de-energization?

Q4. If a public safety partner needs to check on potential changes in scope of the PSPS where can you find that information?

Q5: Can PSPS de-energization result in public safety impacts due to changes in water flows in the hydroelectric system?
Explain the types of impacts and how they are mitigated.



EP&R | M3 - De-Energization & Notifications

Q6. You have been notified that a key piece of switching equipment in the field is defective and is a critical component of the de-energization process. From materials standpoint what do you do?

Q7. How is crew safety managed in the field during de-energization while preparing for patrol and restoration?

Q8. What changes have occurred in the Planning Section, specifically in the Situation Unit, according to the 2023 PSSP Annex?

Module 4

All Clear, Patrol & Restore, Notifications & Damage Documentation





- **Red Flag Warning set to expire at 1800 hours**
- **Fair and dry weather expected over the weekend with lighter winds**
- **Fire potential will remain high through the weekend but should decrease as onshore flow returns**

Issued: 5/12/2023 7:00

[illegible]

- **Red Flag Warning issued for most of the northern interior, Bay Area and far South**
- **End: 1800 hours – May 12th**
- **Due to gusty east-northeast winds and low relative humidity**
- **Note: Timing extends beyond the period of wind risk due to low humidity values**



National Weather Service

National Oceanic and Atmospheric Administration

[Home](#)
[Spot Forecast](#)
[Forecasts/Outlooks](#)
[Current Conditions](#)
[Fire Status](#)
[Fuels](#)
[KML](#)
[Contact/Other Info](#)
[Permalink](#)

CALIFORNIA FIRE WEATHER

This page is an interagency effort providing convenient access to Emergency Command Center Dispatch Area (ECCDA) Radio forecasts, specific National Weather Service Fire Weather Planning Forecasts (FWZ) and National Weather Service Red Flag Warnings and Fire Weather Watches for California. The information available here is targeted for fire suppression, land management and emergency response agencies and their staff. Information about the [current wildfires](#) burning in California can be obtained from [Cal Fire](#) or the [National Interagency Fire Center](#).

Note:

Fire Weather Zone changes for EKA, STO, and REV on 3/3/2020.
Lake County moves from STO to EKA office on 3/3/2020.

Please email [webmaster](#) for any problems with the web page

The map will display the [detailed](#) hazards area of Red Flag Warnings and Fire Weather Watches which may include all or portions of a NWS Fire Weather Zone.

Welcome to the California Fire Weather Page

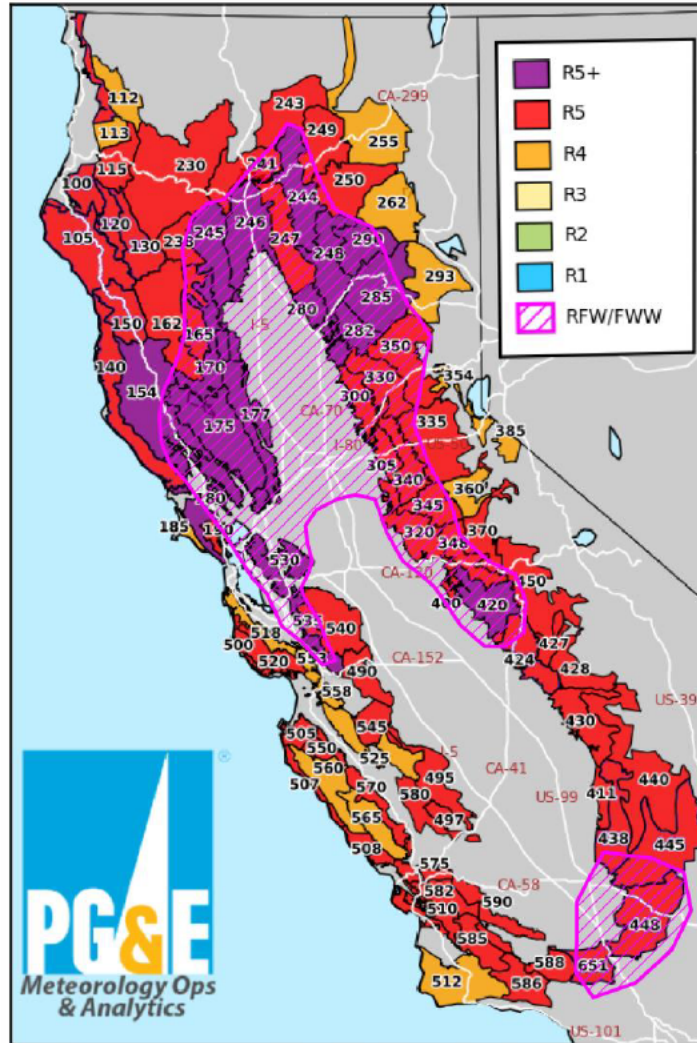


Note: ECCDA Forecast Summaries are issued no later than 945 a.m. and 400 p.m. daily during high fire season and low season are issued no later than 4 p.m. Monday through Friday (excluding holidays).

Please consult the latest [NWS Fire Weather Planning Forecasts](#) and [Red Flag Warning and Fire Weather Watches](#) for the latest information 24 hours a day.

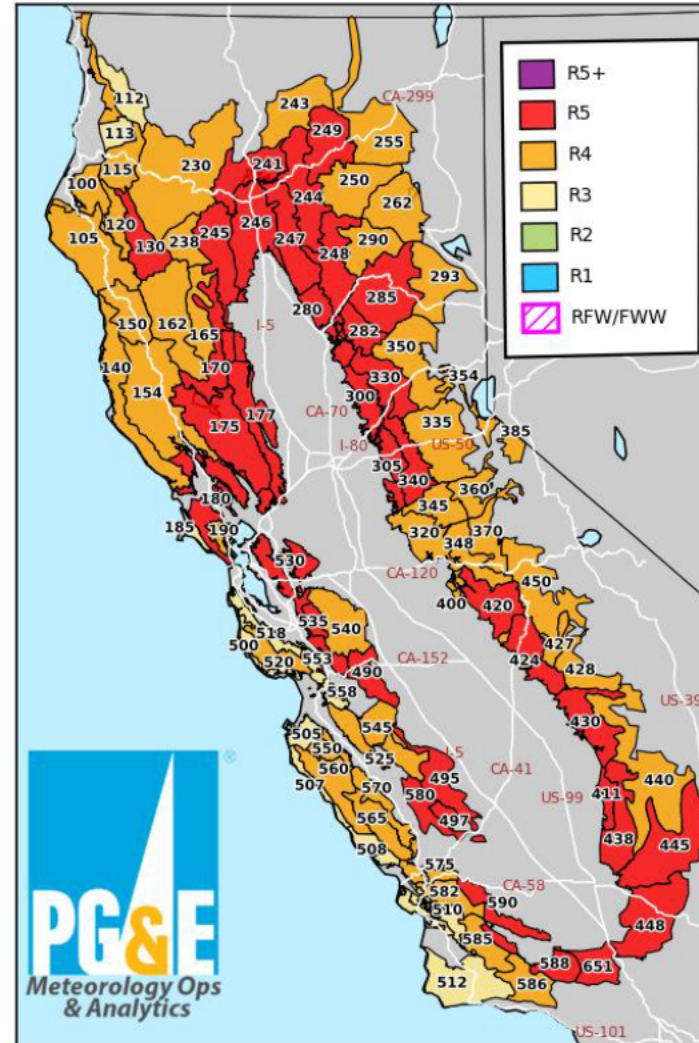
EP&R | Exercise Exercise Exercise – 2023 PSPS TTX

PG&E Utility Fire Potential Index Ratings
Valid for 05/12/2023



PG&E's Fire Potential Index is intended for the exclusive use of PG&E and is proprietary to PG&E. PG&E, nor their parent corporations or affiliates, nor any person acting on their behalf (a) makes any warranty, expressed or implied, with respect to the use of PG&E's Fire Potential Index; or (b) assumes any liability with respect to the use of PG&E's Fire Potential Index. This forecast is intended and has been customized for PG&E utility operations and should not be used for any other purpose or by any other entity. Do not share this information without authorization.

PG&E Utility Fire Potential Index Ratings
Valid for 05/13/2023



PG&E's Fire Potential Index is intended for the exclusive use of PG&E and is proprietary to PG&E. PG&E, nor their parent corporations or affiliates, nor any person acting on their behalf (a) makes any warranty, expressed or implied, with respect to the use of PG&E's Fire Potential Index; or (b) assumes any liability with respect to the use of PG&E's Fire Potential Index. This forecast is intended and has been customized for PG&E utility operations and should not be used for any other purpose or by any other entity. Do not share this information without authorization.

Predictive Services Forecast

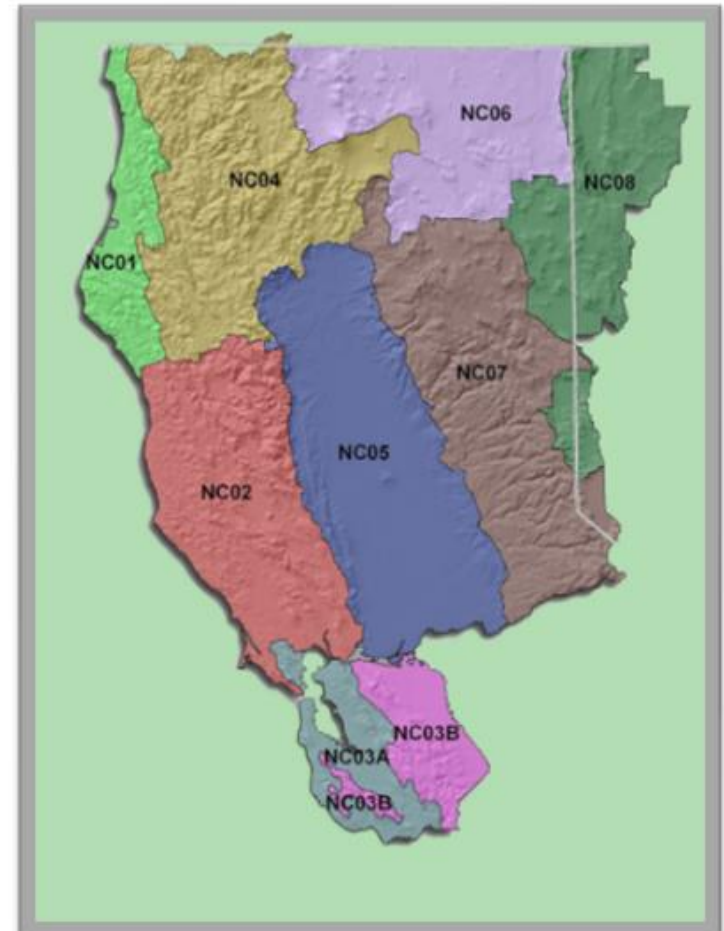


North Ops 7-day Significant Fire Potential Outlook

Issued by North Ops Predictive Services, Redding CA

Published: Friday, May 12, 2023

Predictive Service Area (PSA)	Fri 12 May	Sat 13 May	Sun 14 May	Mon 15 May	Tue 16 May	Wed 17 May	Thu 18 May	Fri 19 May
NC01 - North Coast								
NC02 - Mid Coast to Mendocino	W							
NC03A - Bay Marine	W							
NC03B - Diablo-Santa Cruz Mtns	W							
NC04 - Northwestern Mtn	W							
NC05 - Sac Valley/Foothills	W							
NC06 - NE California								
NC07 - Northern Sierras	W							
NC08 - Far Eastside								



EP&R | Exercise Exercise Exercise – 2023 PSPS TTX

Predictive Services Forecast



**Predictive
Services**

National Predictive Services Forecast
California South Ops

Published: Friday, May 12, 2023

Predictive Service Area (PSA)	Fri 12 May	Sat 13 May	Sun 14 May	Mon 15 May	Tue 16 May	Wed 17 May	Thu 18 May	Fri 19 May
SC01 - Eastern Sierra								
SC02 - Central Sierra	W							
SC03 - Southern Sierra	W							
SC04 - Sierra Foothills	W							
SC05 - Central Valley	W							
SC06 - Central Coast Interior								
SC07 - Central Coast								
SC08 - South Coast	W							
SC09 - Western Mountains	W							
SC10 - Eastern Mountains	W							
SC11 - Southern Mountains	W							
SC12 - Lower Deserts								
SC13 - Eastern Deserts								
SC14 - Central Mojave								
SC15 - Upper Deserts								
SC16 - Northern Deserts								

Legend:

Fuel Dryness

- Moist - Little no risk for large fires
- Dry - Low risk of large fires in the absence of a "High Risk" event
- Very Dry - Low/Moderate risk of large fires in the absence of a "High Risk" event
- Data Unavailable

High Risk Days

- At least a 20% chance of a "Large Fire" due to a combination of either "Dry" or "Very Dry" Fuel Dryness and an Ignition Trigger. High Risk Days will include the symbol indicating the type of event.
- At least a 20% chance of a new "Large Fire" or significant growth on existing fires due to a combination of either "Dry" or "Very Dry" Fuel Dryness and a Critical Burn Environment. High Risk Days will include the symbol indicating the type of event.





EP&R | Exercise Exercise Exercise – 2023 PSPS TTX

Current Scope (2023-05-11-V-02)

End

0800 – 1000 hours Friday, May
12

2023-05-11-V-02

time_place_id

2023-05-11-TP-02

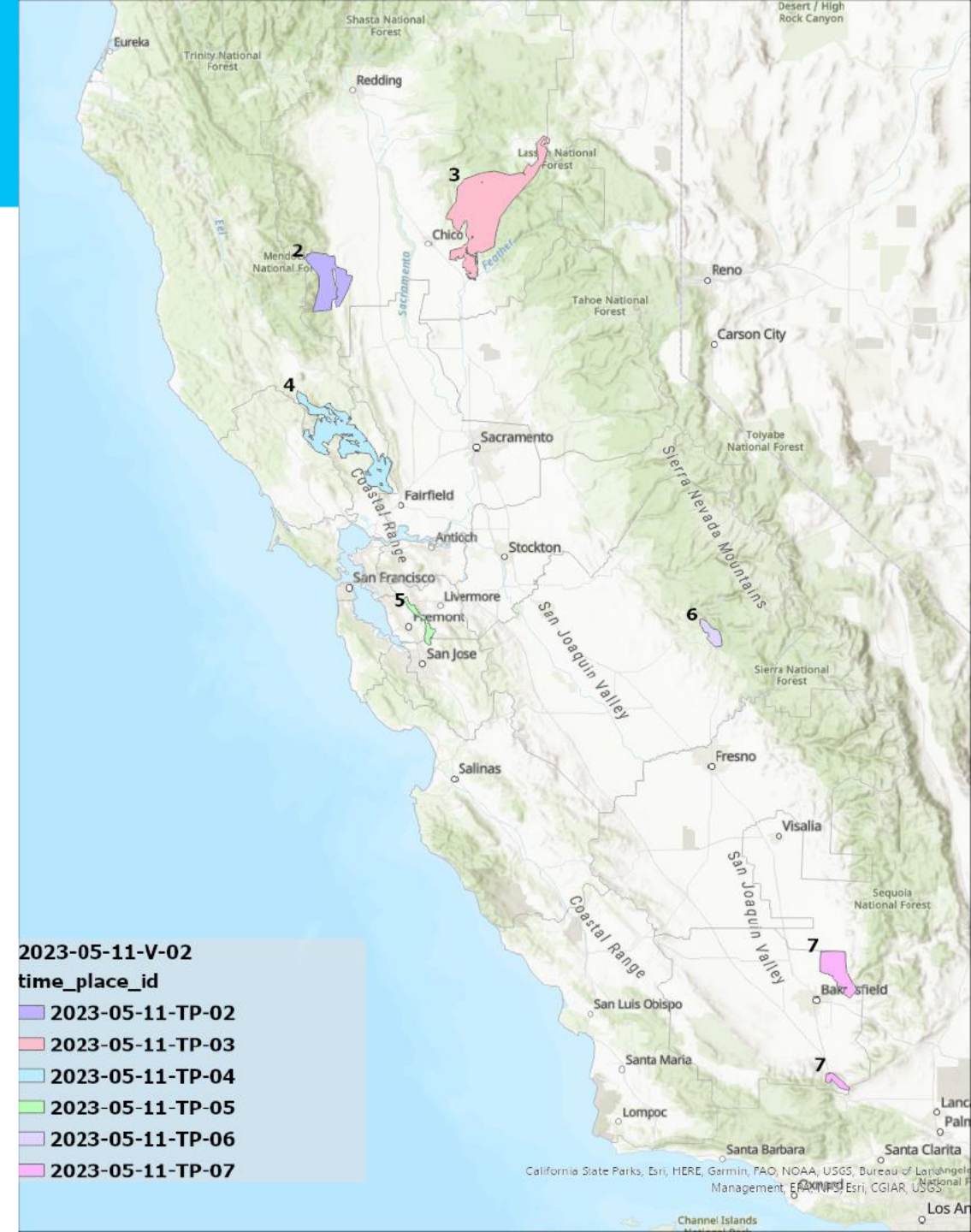
2023-05-11-TP-03

2023-05-11-TP-04

2023-05-11-TP-05

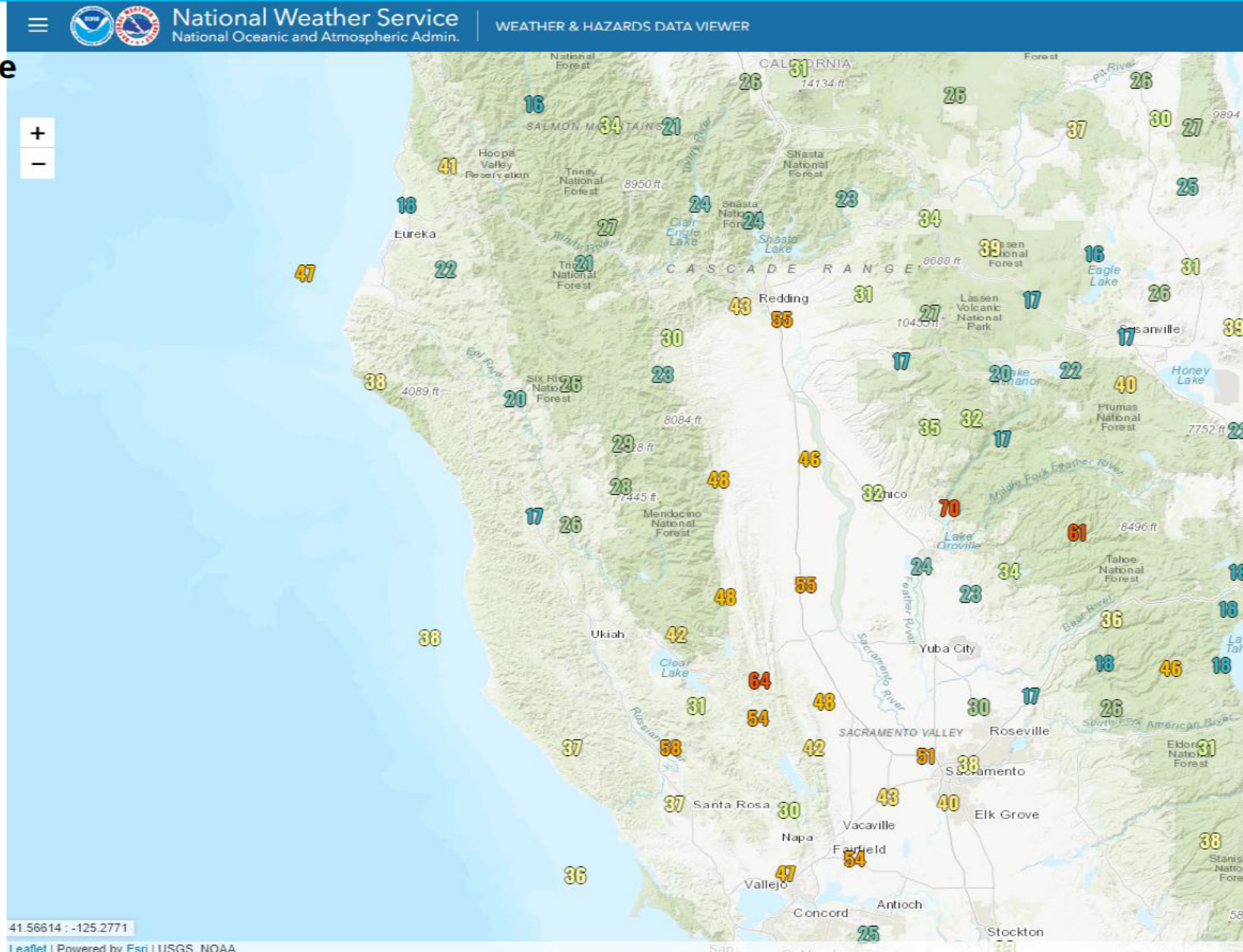
2023-05-11-TP-06

2023-05-11-TP-07



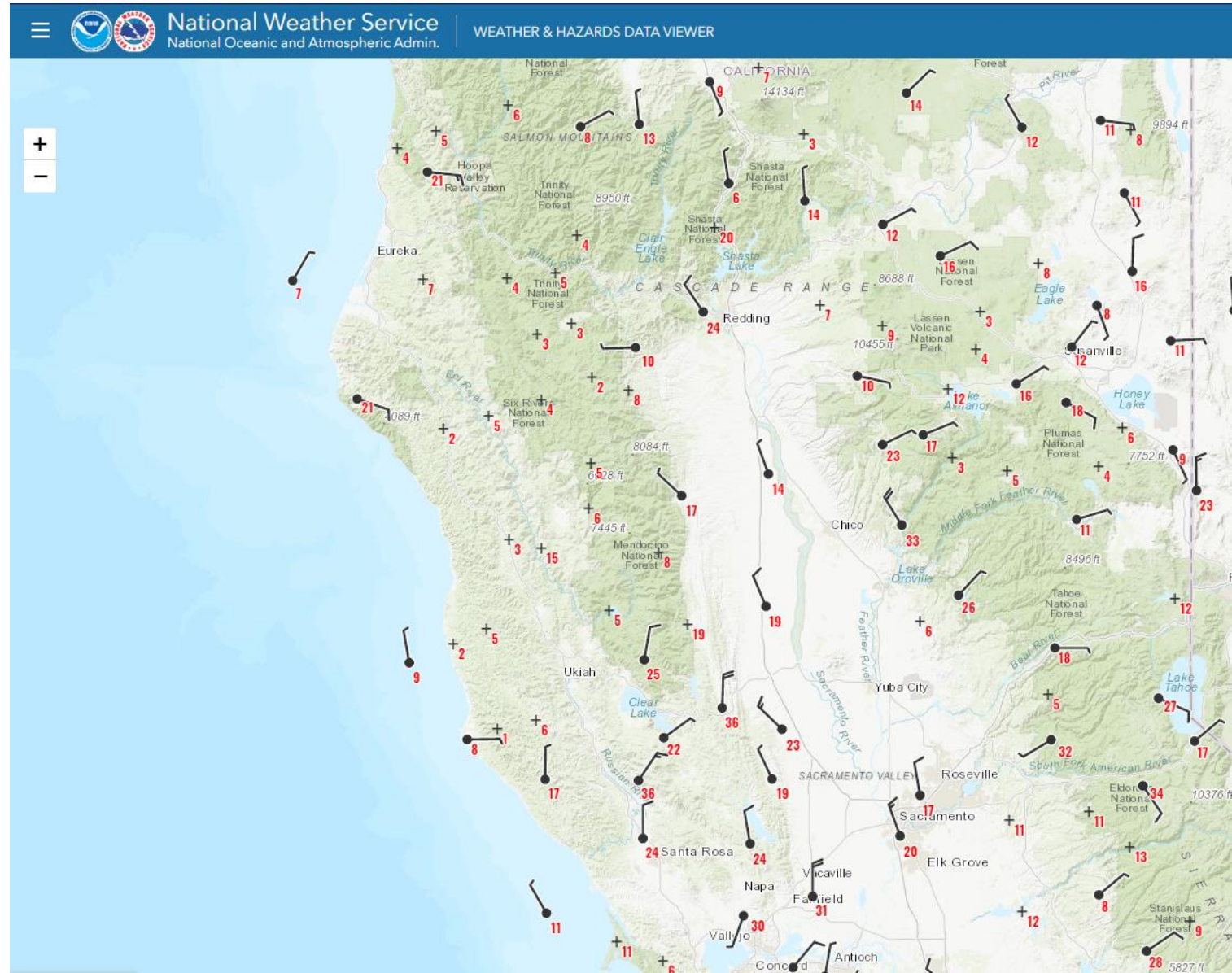
EP&R | Exercise Exercise Exercise – 2023 PSPS TTX

Highest wind gust since midnight



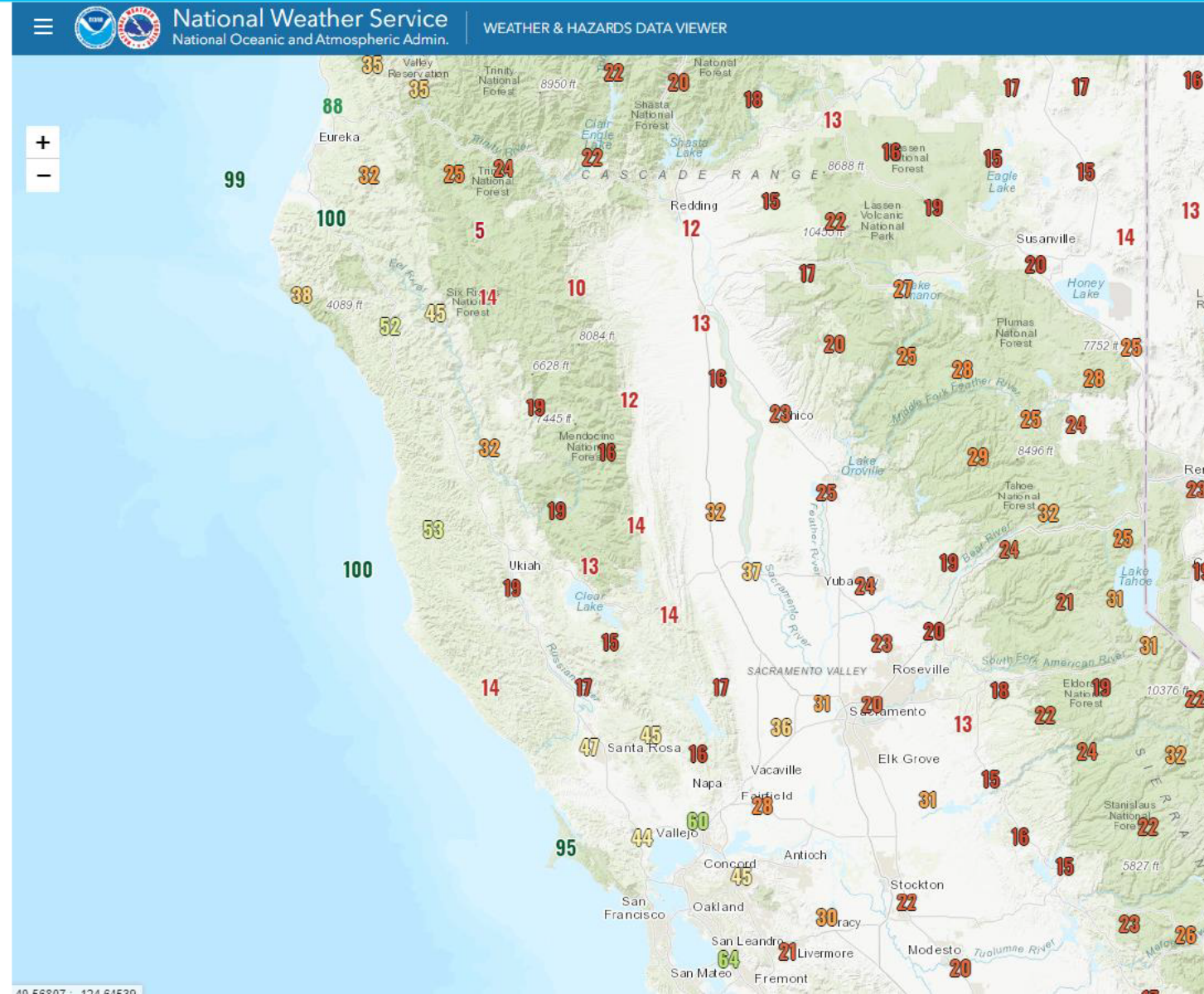
EP&R | Exercise Exercise Exercise – 2023 PSPS TTX

Current wind observations



EP&R | Exercise Exercise Exercise – 2023 PSPS TTX

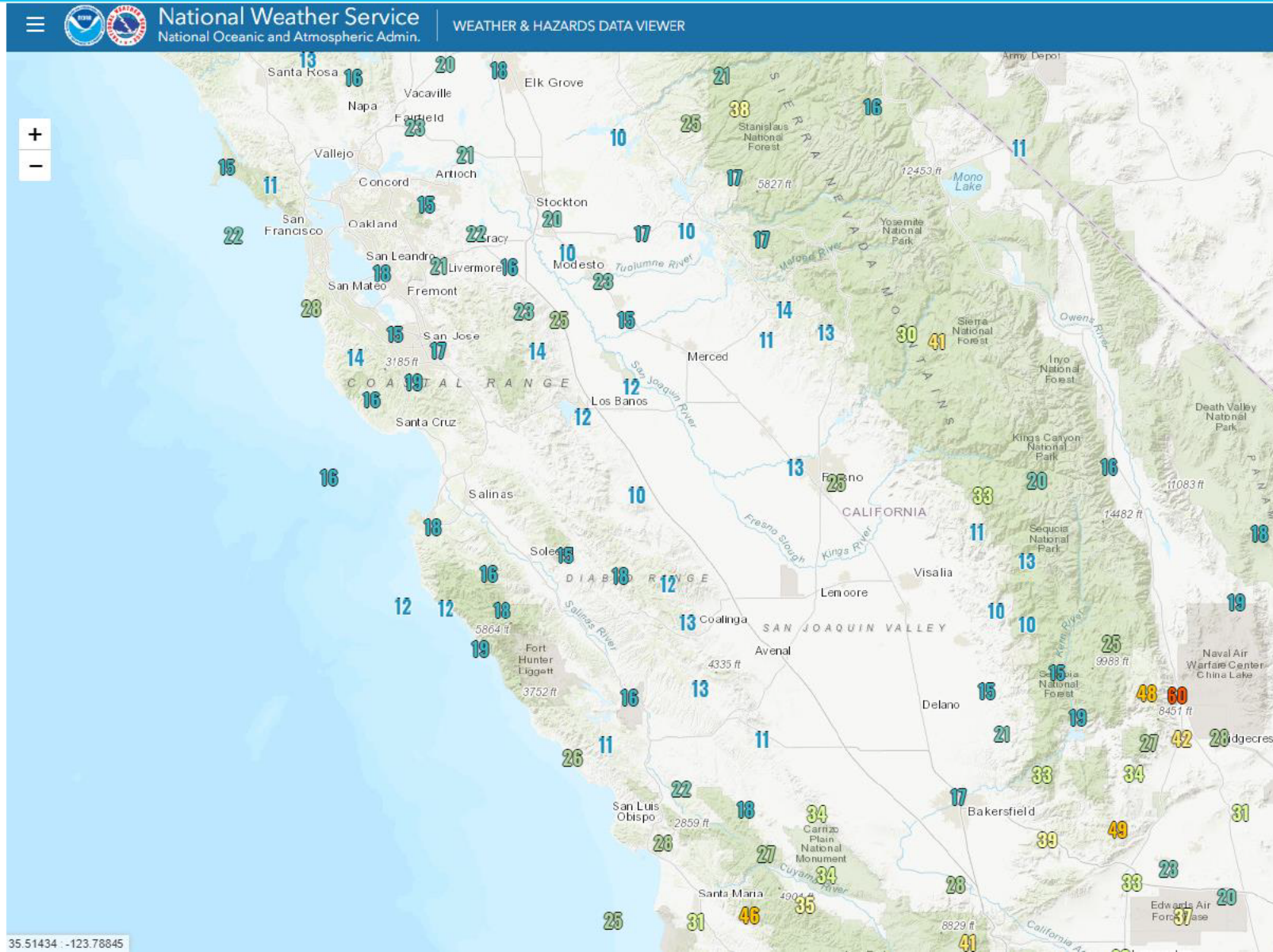
Relative Humidity





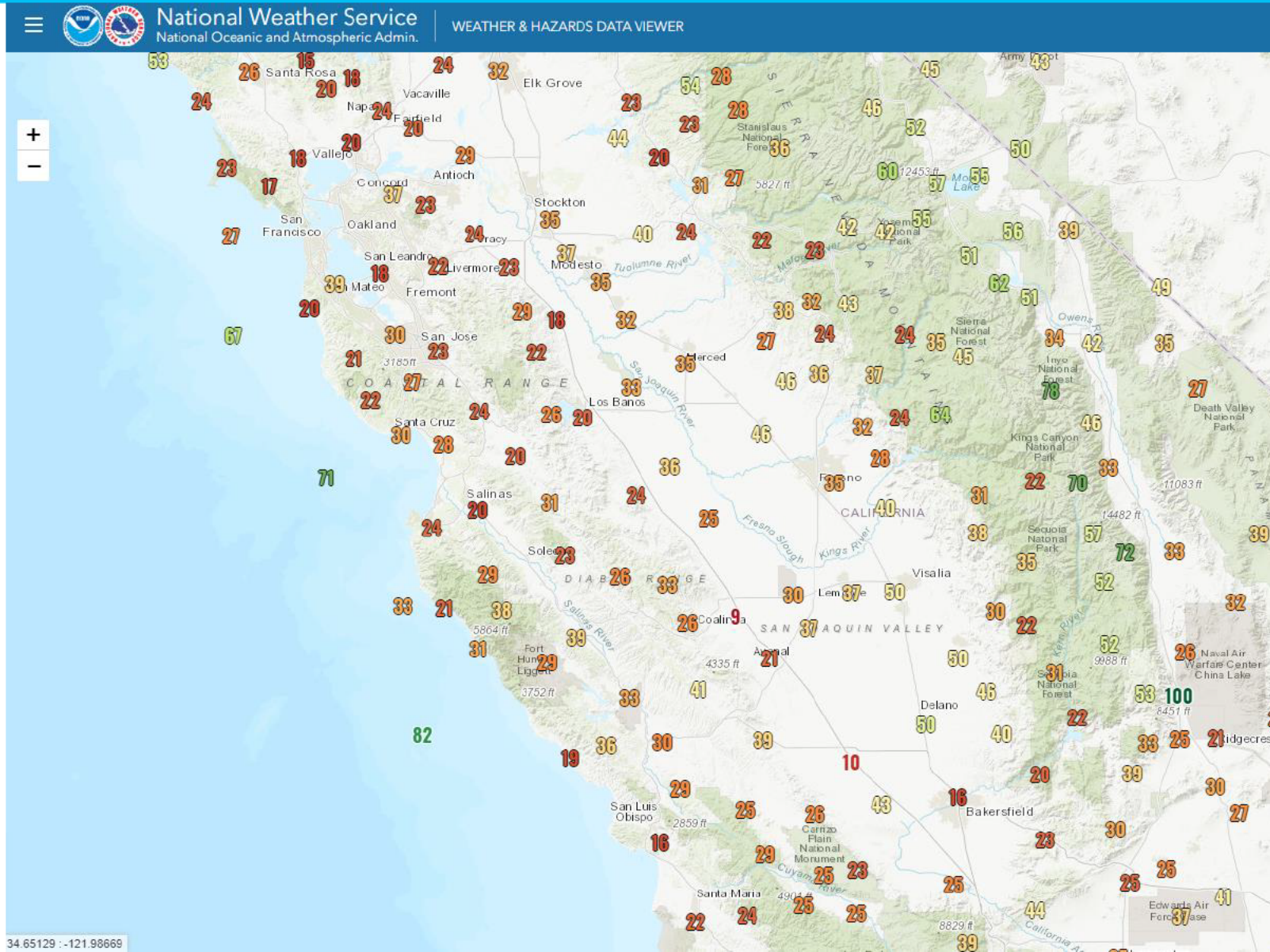
EP&R | Exercise Exercise Exercise – 2023 PSPS TTX

Current Winds



DRILL – 2023 PSPS TTX

Relative Humidity





EP&R | Exercise Exercise Exercise – 2023 PSPS TTX

DSO SOPP Forecast

DSO SOPP Model Forecast

Issued: Friday, May 12, 2023 08:00

Transformer Level Outages and Above

Cat	Staffing	Qualitative Weather
Cat 1	Normal, but have a plan	Sig. Adverse weather unlikely
Cat 2	Have a plan for escalation	Adverse weather possible
Cat 3	Staffing & Timing as Directed	Adverse weather likely
Cat 4	Staffing & Timing as Directed	Extreme weather possible
Cat 5	Staffing & Timing as Directed	Extreme weather likely

	Friday 5/12/2023				Saturday 5/13/2023				Sunday 5/14/2023				Monday 5/15/2023			
Outages by Division	SO	CESO	TM	CR	SO	CESO	TM	CR	SO	CESO	TM	CR	SO	CESO	TM	CR
North Coast	18	2200	13	8	11	1400	8	5	10	1300	7	4	11	1400	7	4
Humboldt	6	500	5	3	4	400	3	2	4	400	3	2	5	500	3	2
Sonoma	5	600	3	2	3	400	2	1	3	400	2	1	3	400	2	1
North Bay	7	1100	5	3	4	600	3	2	3	500	2	1	3	500	2	1
North Valley & Sierra	28	3700	17	11	18	1400	12	7	17	1300	12	7	17	1300	12	7
North Valley	12	2300	9	6	7	500	5	3	6	400	5	3	6	400	5	3
Sierra	7	700	3	2	3	300	2	1	3	300	2	1	3	300	2	1
Sacramento	9	700	5	3	8	600	5	3	8	500	5	3	8	500	5	3
Bay Area	17	5100	12	7	9	2600	10	5	7	2100	10	5	7	2100	10	5
San Francisco	1	400	2	1	1	400	2	1	1	400	2	1	1	400	2	1
East Bay	3	1400	2	1	1	500	2	1	1	500	2	1	1	500	2	1
Diablo	4	1000	2	1	3	700	2	1	2	500	2	1	2	500	2	1
Peninsula	4	900	3	2	2	400	2	1	2	400	2	1	2	400	2	1
Mission	5	1400	3	2	2	600	2	1	1	300	2	1	1	300	2	1
South Bay & Central Coast	19	3200	13	8	14	2300	11	6	12	2000	9	5	13	2100	11	6
De Anza	3	500	2	1	2	400	2	1	2	400	2	1	2	400	2	1
San Jose	5	1200	3	2	3	700	2	1	2	500	2	1	2	500	2	1
Central Coast	7	1000	5	3	6	800	5	3	5	700	3	2	6	800	5	3
Los Padres	4	500	3	2	3	400	2	1	3	400	2	1	3	400	2	1
Central Valley	33	4300	17	11	25	2700	14	9	26	2800	14	9	25	2700	14	9
Stockton	6	800	3	2	5	600	3	2	5	600	3	2	5	600	3	2
Yosemite	8	700	3	2	6	500	3	2	7	600	3	2	6	500	3	2
Fresno	11	1200	6	4	9	1000	5	3	9	1000	5	3	9	1000	5	3
Kern	8	1600	5	3	5	600	3	2	5	600	3	2	5	600	3	2
PG&E SYSTEM	115	18500	72	45	77	10400	55	32	72	9500	52	30	73	9600	54	31

PG&E Internal Use Only Meteorology Operations & Analytics

Notes: SO = Sustained Outages, CESO = Customers Experiencing Sustained Outages, TM = Troublemakers, CR = Crews

DSO SOPP Model Forecast Timing, by Division

	Friday 5/12/2023	Saturday 5/13/2023	Sunday 5/14/2023	Monday 5/15/2023
Timing by Division	Timing	Timing	Timing	Timing
Humboldt				
Sonoma	N/A			
North Bay	N/A			
North Valley	N/A			
Sierra				
Sacramento	N/A			
San Francisco				
East Bay				
Diablo				
Peninsula				
Mission	N/A			
De Anza				
San Jose	N/A			
Central Coast				
Los Padres				
Stockton				
Yosemite	N/A			
Fresno				
Kern	N/A			

PG&E Internal Use Only Meteorology Operations & Analytics

Note: Timing reflects the risk period of outage producing weather for any division at elevated Cat 1 or above

DSO SOPP 911 - Standby Event Forecast

Issued: 5/12/23 8:00	Friday 5/12/2023	Saturday 5/13/2023	Sunday 5/14/2023	Monday 5/15/2023
911 Events by Division	911	911	911	911
North Coast	7	4	3	4
Humboldt	2	1	1	2
Sonoma	2	1	1	1
North Bay	3	2	1	1
North Valley & Sierra	7	5	5	5
North Valley	3	2	2	2
Sierra	2	1	1	1
Sacramento	2	2	2	2
Bay Area	10	6	5	5
San Francisco	1	1	1	1
East Bay	2	1	1	1
Diablo	2	2	1	1
Peninsula	2	1	1	1
Mission	3	1	1	1
South Bay & Central Coast	6	5	6	6
De Anza	1	1	1	1
San Jose	2	1	1	1
Central Coast	2	2	2	2
Los Padres	1	1	1	1
Central Valley	9	8	8	8
Stockton	2	1	1	1
Yosemite	2	2	2	2
Fresno	3	3	3	3
Kern	2	2	2	2
PG&E SYSTEM	39	28	26	27

PG&E Internal Use Only

Meteorology Operations & Analytics

Note: Numbers indicate the expected number of 911-standby events

DSO SOPP 911 - Standby Event Timing

	Friday 5/12/2023	Saturday 5/13/2023	Sunday 5/14/2023	Monday 5/15/2023
Timing by Division	911	911	911	911
Humboldt				
Sonoma	N/A			
North Bay	N/A			
North Valley	N/A			
Sierra				
Sacramento	N/A			
San Francisco				
East Bay				
Diablo				
Peninsula				
Mission	N/A			
De Anza				
San Jose	N/A			
Central Coast				
Los Padres				
Stockton				
Yosemite	N/A			
Fresno				
Kern	N/A			

PG&E Internal Use Only

Meteorology Operations & Analytics

Note: Timing coincides with DSO SOPP Model timing for adverse weather



EP&R | M4 - De-Energization & Notifications

Q1. Who will be inputting All Clear Zones in the PSIP Restoration tab following an All-Clear Meeting?

How will this information be communicated to the PSPS Scoping Specialist?

Q2. Once the all-clear is given, describe the IT Branch's priorities and key activities.

Q3. What do you do if the outage impact to customers is extended, and the CRC site is no longer available, or we need another CRC site?



EP&R | M4 - De-Energization & Notifications

Q4. What are some of the Finance Branch's priorities during this phase?

Q5. Briefly describe the damage documentation process from data collection to reporting.

Q6: What type of resources does Vegetation Management have available to support restoration and how are they requested?



EP&R | M4 - De-Energization & Notifications

Q7. In an event, where all lines in scope are de-energized, how actually involved is ETEC in the (All Clear, Patrol & Restoration) during a PSPS?
What happens in ETEC during this time?

Q8. How is damage reported at a division level to ensure timely restoration and mitigation?

Q9. What Does SIPT do to support patrol and restoration?



EP&R | M4 - De-Energization & Notifications

Q10. What should we do if the restoration playbook is missing All Clear Zones?

Q11. A member of a Tribal Board of Supervisors calls and wants to know how much damage has occurred to their portion of the electrical grid. They also request coordination to ensure that historical and culturally sensitive areas of their nation are not disturbed. How would PG&E support this effort?

Q12. To which section does the I&I section communicate discrepancies identified as requiring 'Ops Review' by an I&I Data Analyst?



EP&R | M4 - De-Energization & Notifications

Q13. How is the “All-Clear” message communicated to Notification and OMT Hawks to minimize cascading delay and expedite restoration?

Q14. Why would a device in the Restoration Playbook be marked as Patrol Not Required?

Q15. How are qualified damages and hazards reported into a system of record to ensure timely reporting to regulators?

Q16. OEC has a PSPS outage that is not expected to be restored in the next 24 hours. What actions should be taken?

Hot Wash





EP&R | Hot Wash Report Outs

What Went Well (Best Practice)	Areas for Improvement (Corrective Action)
Works well and helped to better understand PSPS process/procedures, especially in your section or organization	Does not work well in the PSPS process/procedures, especially in your section or organization

Closing Remarks



Thank you!

