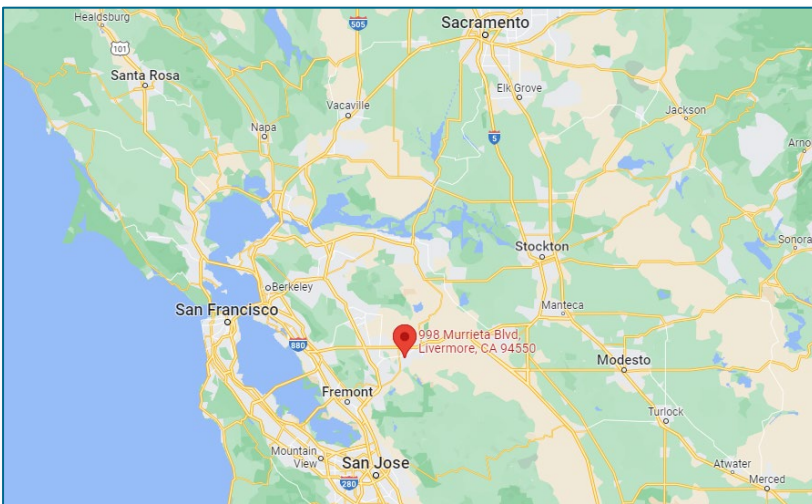
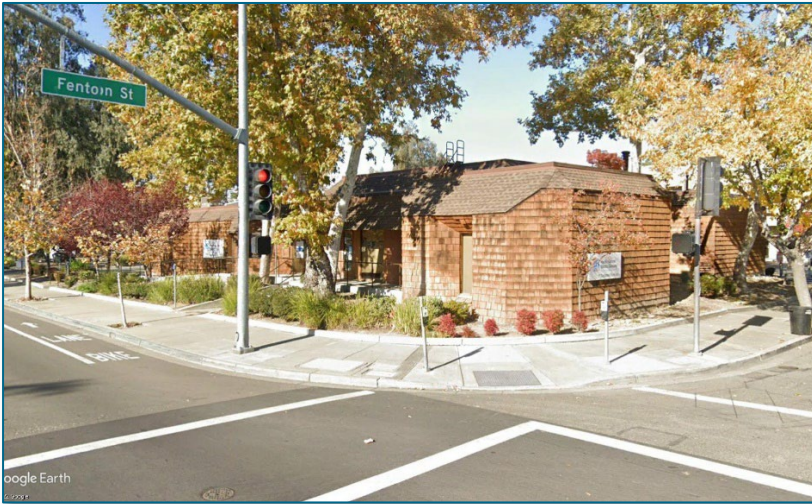




# PG&E Property for Sale

## 998 Murrieta Blvd, Livermore



[View on Google Maps](#)

Image Source: Google

### Property Details

±0.55-acre property with a one-story, ± 5,811 square foot office building and parking lot

Location: At the corner of Murrieta Blvd and Fenton Street, very close to East Stanley Blvd and the Stanford Medicine Valley Care medical complex

Alameda County

APN: 097-0086-007

Zoning: Commercial Office (CO)

General Plan Designation: Office Commercial (OC)

Description: The building has ± 5,618.05 rentable square feet and the parking lot can accommodate up to 12 vehicles. Located in a commercial neighborhood with mostly medical uses and nearby residences. Public transit is available on East Stanley Blvd. State Route 84 is about one mile and Interstate 580 is approximately three miles from the property.

Environmental: No known environmental issues on the property.

PG&E Facilities: A small electrical transformer box will require an easement.

Broker Contact:

Bob Vance

[JLL](#)

Direct: +1 925 944 2152

Mobile: +1 925 899 2055

[robert.vance@am.jll.com](mailto:robert.vance@am.jll.com)

Contact PG&E at [landsales@pge.com](mailto:landsales@pge.com)

The above information, while not guaranteed, has been secured from sources we believe to be reliable. It may be subject to error, change, or withdrawal. Interested parties should contact PG&E to verify details about the property.

Updated April 17, 2023