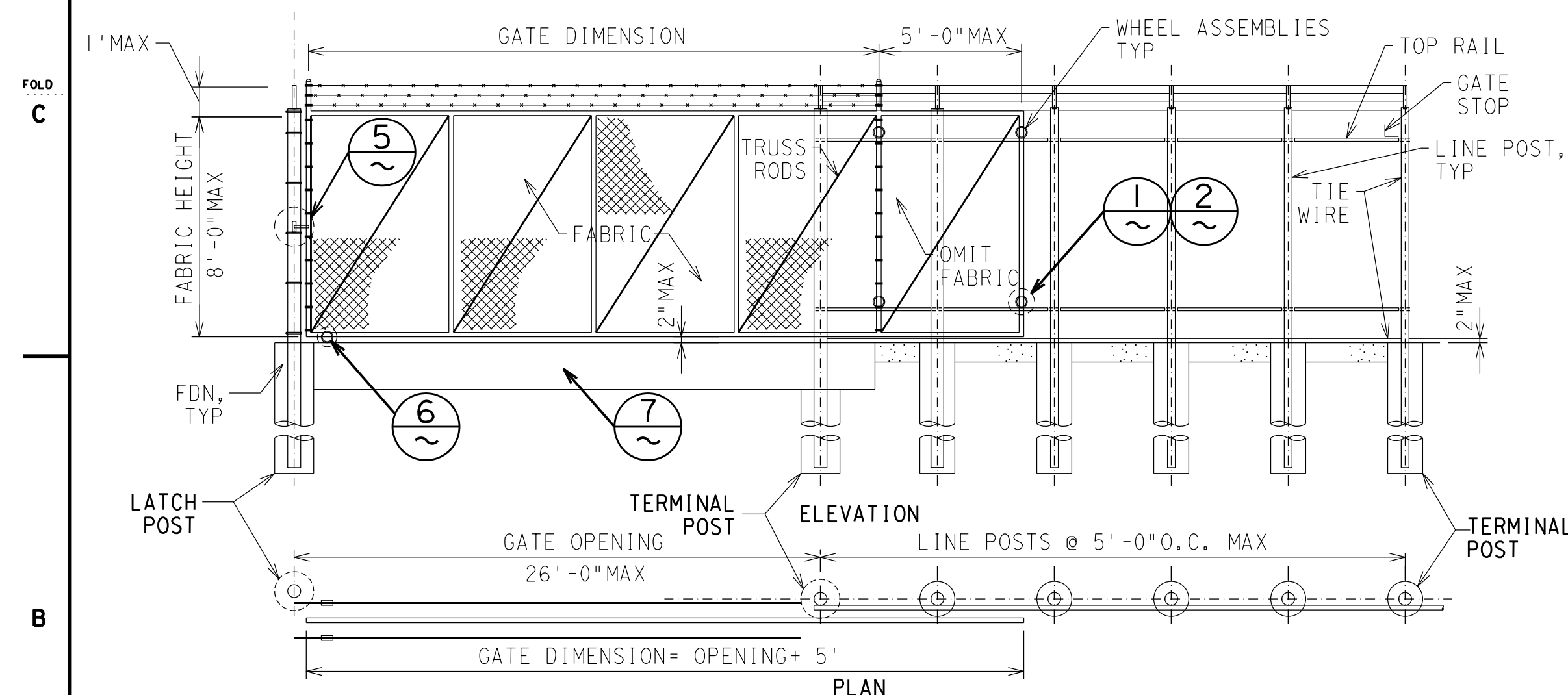


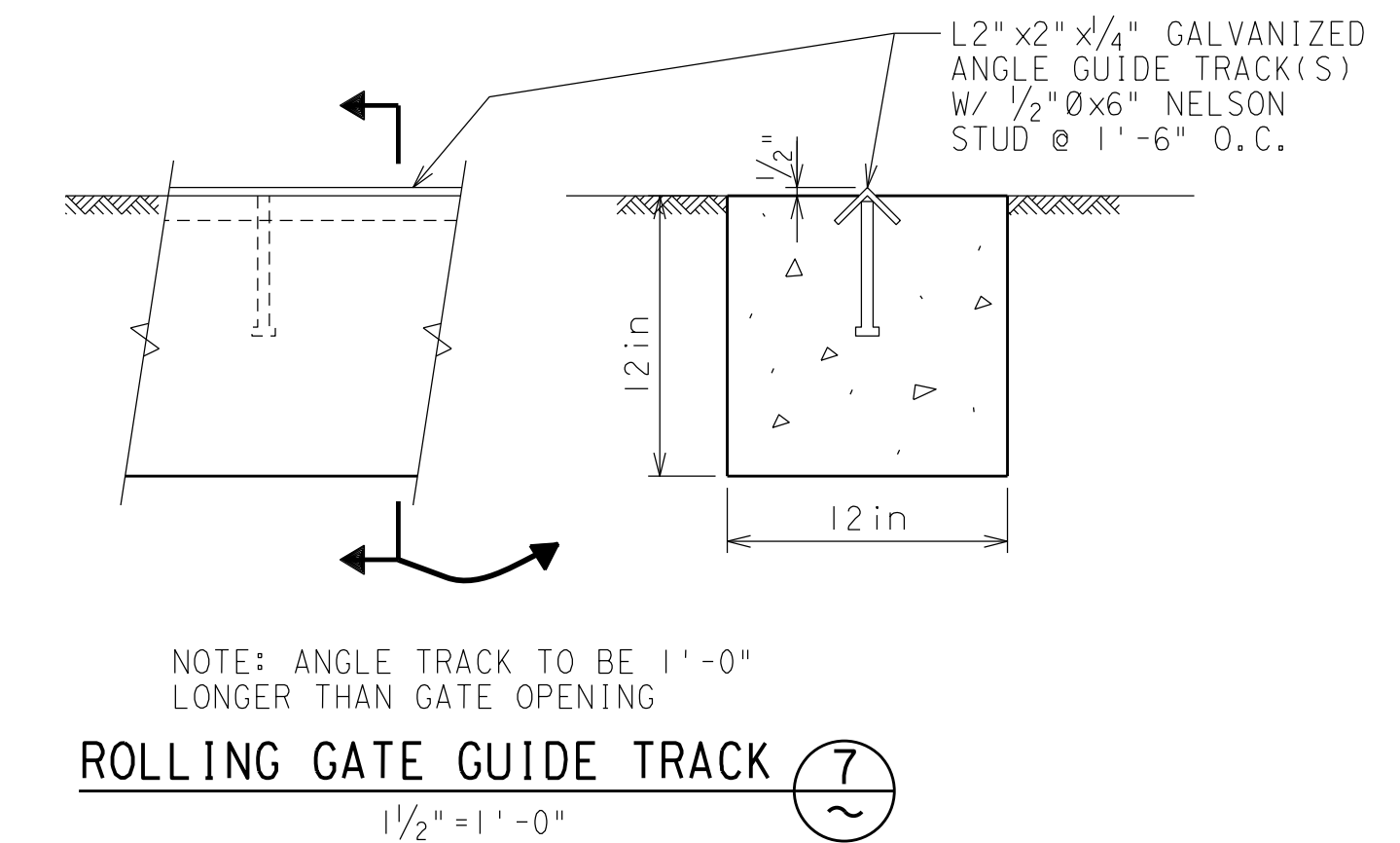
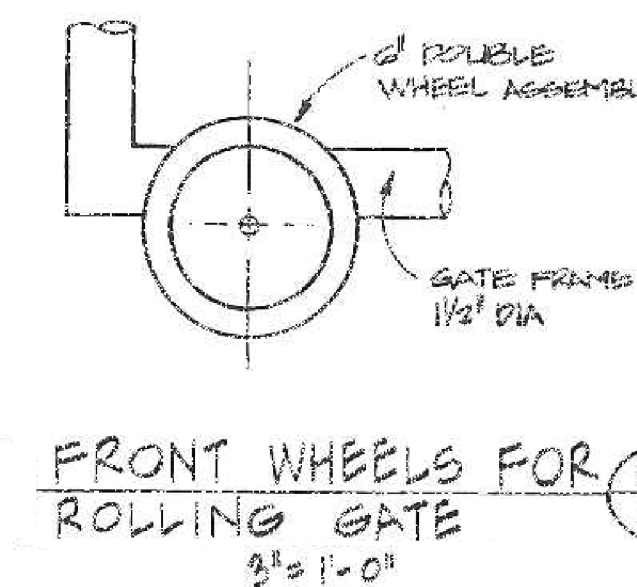
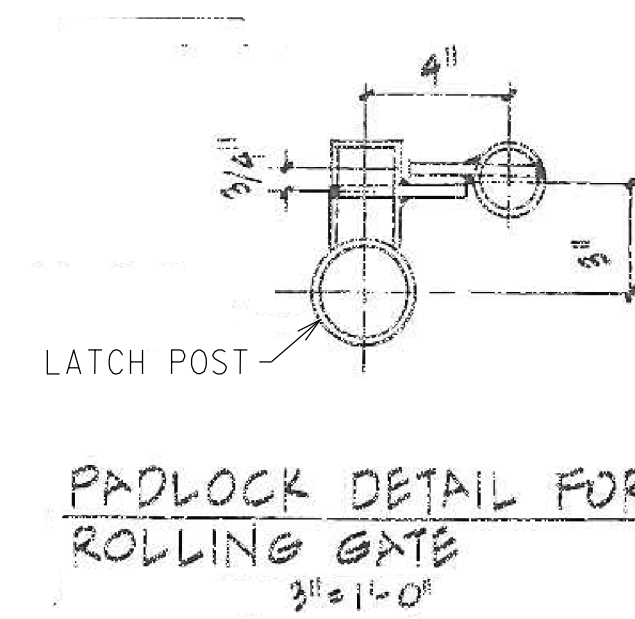
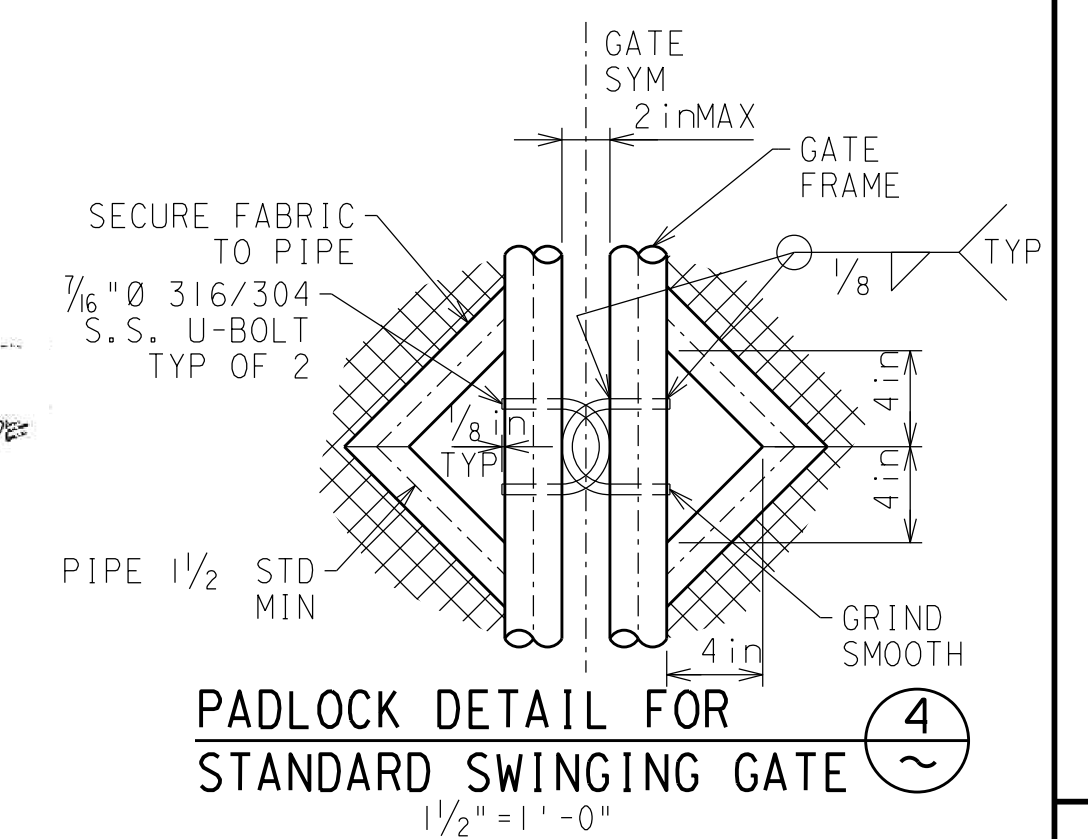
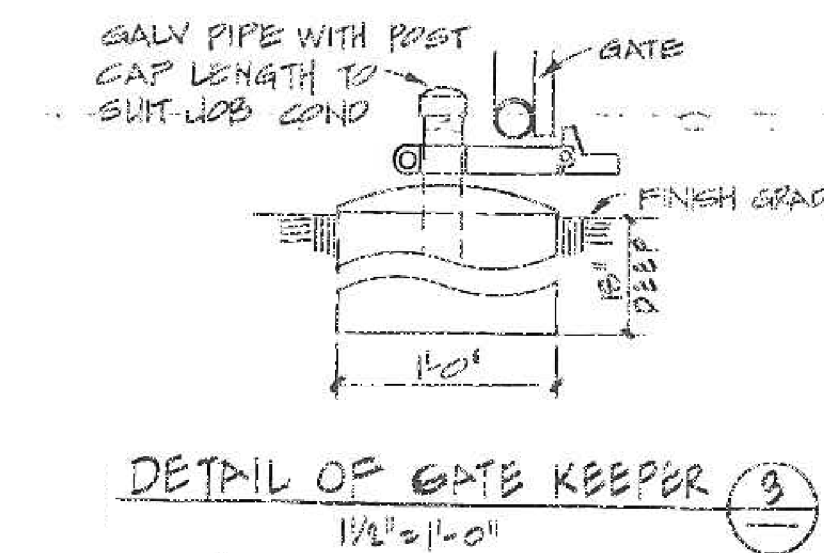
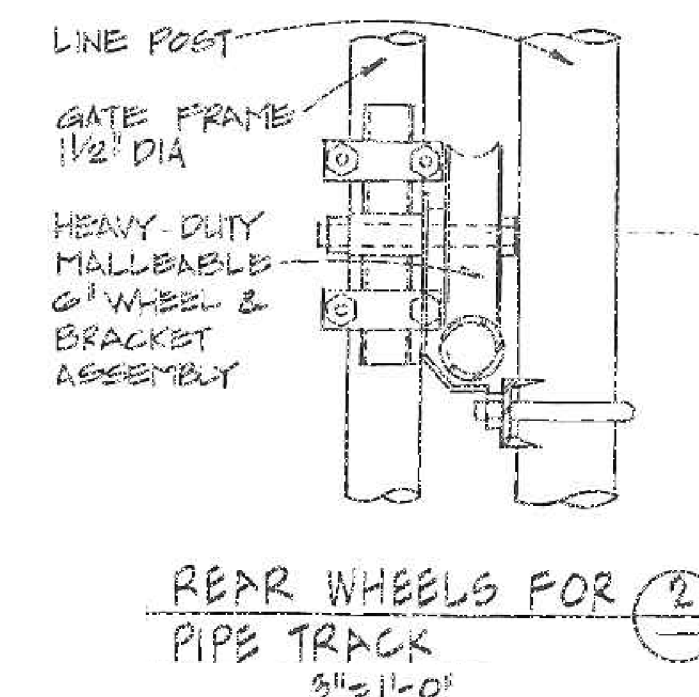
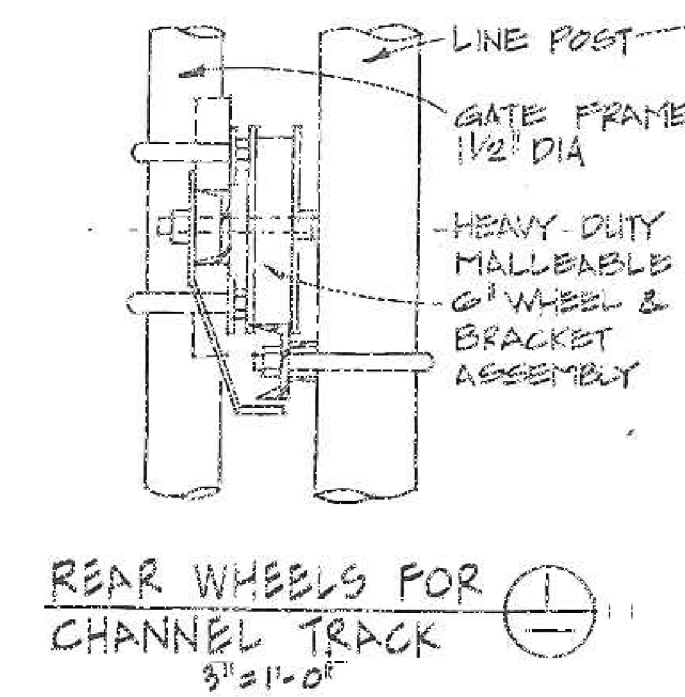
NOTE: SEE TYPE 1 OR 2 TABLES ON SHEET 1 FOR POST AND FOUNDATION SIZES

STANDARD SWING GATE  
NTS



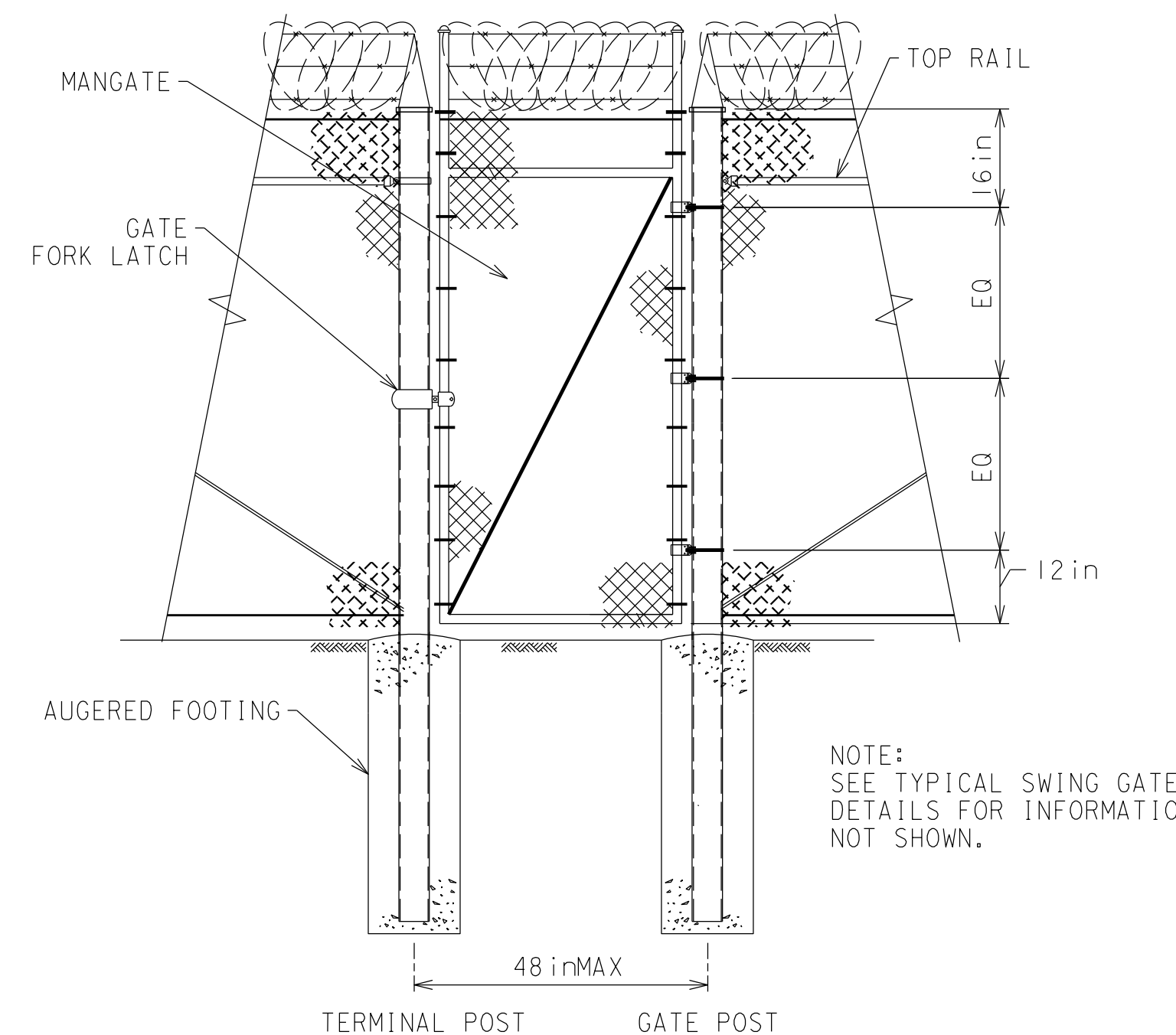
NOTE: SEE TYPE 1 OR 2 TABLES ON SHEET 1 FOR POST AND FOUNDATION SIZES

ROLLING GATE  
NTS



NOTE: ANGLE TRACK TO BE 1'-0"  
LONGER THAN GATE OPENING

ROLLING GATE GUIDE TRACK 7  
~



NOTE:  
SEE TYPICAL SWING GATE  
DETAILS FOR INFORMATION  
NOT SHOWN.

TYPICAL MANGATE  
1/2" = 1' - 0"

- GATE NOTES

1. GATE KEEPERS SHALL BE PROVIDED FOR EACH LEAF OVER 5 FEET WIDE. GATE KEEPERS SHALL CONSIST OF A MECHANICAL DEVICE FOR SECURING THE FREE END OF THE GATE WHEN IN FULL OPEN POSITION.
2. GATE FRAMES SHALL BE CONSTRUCTED FROM 1½" NOMINAL DIAMETER STANDARD WEIGHT PIPE, CONFORMING TO ASTM A53 GRADE B; CORNERS WELDED OR FITTED AND FRAME TRUSSED WITH ¾" ADJUSTABLE RODS.
3. THE SAME CHAIN LINK FABRIC SPECIFIED FOR THE FENCE SHALL BE ATTACHED TO THE GATE FRAME BY USING STRETCHER BARS AND TIE WIRES AS SPECIFIED FOR THE FENCE CONSTRUCTION, AND SUITABLE TENSION CONNECTIONS SPACED AT ONE FOOT INTERVALS.
4. THE GATE SHALL BE HUNG WITH AT LEAST 2 HEAVY DUTY GALVANIZED HINGES OF APPROPRIATE WEIGHT TO SUPPORT THE WEIGHT OF THE GATE LEAF, SUCH THAT THE GAP BELOW EACH GATE LEAF DOES NOT EXCEED 2".
5. EXTENSION ARMS SHALL BE INSTALLED ON THE END POSTS TO CARRY 3 ROWS OF BARBED WIRE TO COMPLETE HORIZONTAL ALIGNMENT WITH BARBED WIRE ON ADJACENT FENCE.
6. LATCHES FOR DOUBLE GATES SHALL BE FORK TYPE LATCH WITH CENTER DROP ROD OR PLUNGER BAR TYPE OF FULL GATE HEIGHT ARRANGED TO ENGAGE THE GATE STOP, OR A POSITIVE LOCKING GRAVITY DEVICE. LOCKING DEVICES SHALL BE CONSTRUCTED SO THE CENTER DROP ROD OR PLUNGER BAR CANNOT BE RAISED WHEN LOCKED.
7. DESIGN OF GATE SHALL COMPLY WITH ASTM F1184 TYPE II.



APPLIES TO REV 4 ONLY

CIVIL DESIGN STANDARD

PROPERTY FENCE AND GATE DETAILS

DEPARTMENT OF ENGINEERING

**PACIFIC GAS AND ELECTRIC COMPANY**

SAN FRANCISCO, CALIFORNIA

SCAN		IC	
BILL OF MATL			
DWG LIST			
SUPSDS 059659-059662			
SUPSD BY			
SHEET NO 2 OF 4 SHEETS			
3020646			REV 4

DRAINAGE TRENCH DETAIL

NTS

8

~

CENTER GATE STOP DETAIL (9)

ROCK LINED DRAINAGE TRENCH DETAIL (10'  
NTS)

SECTION A

BARBED WIRE DETAIL IIA

NTS

BARBED WIRE  
SWING GATE DETAIL (11B)

### PLAN

## DIG BARRIER NOTE:

1. BELOW GRADE SLURRY BARRIER MAY BE INSTALLED INSIDE OF OR IN-LINE WITH THE FENCE.
2. BELOW GRADE SLURRY BARRIER MAY BE ELIMINATED IF THE EDGE OF AN EXISTING CONCRETE LINED SWALE IS WITHIN 2.5 FEET OF THE FENCE LINE.
3. IF REQUIRED BY CORPORATE SECURITY, ADD 12" WIDE X 10" DEEP BELOW GRADE (2) SACK BARRIER. SEE GRADING PLAN FOR MORE INFORMATION.

SLURRY DIG BARRIER 12  
NTS

VIEW FROM INSIDE SUBSTATION

ANTI-CUT BAR DETAIL 13



APPLIES TO REV 4 ONLY

CIVIL DESIGN STANDARD

PROPERTY FENCE AND GATE DETAILS

DEPARTMENT OF ENGINEERING  
PACIFIC GAS AND ELECTRIC COMPANY  
SAN FRANCISCO, CALIFORNIA

SCAN		IC	
BILL OF MATL			
DWG LIST			
SUPSDS 059659-059662			
SUPSD BY			
SHEET NO 3 OF 4		SHEETS	
3020646			REV 4

3020646

2

FOLD

3

4

5

FOLD

6

7

8

FOLD

9

10

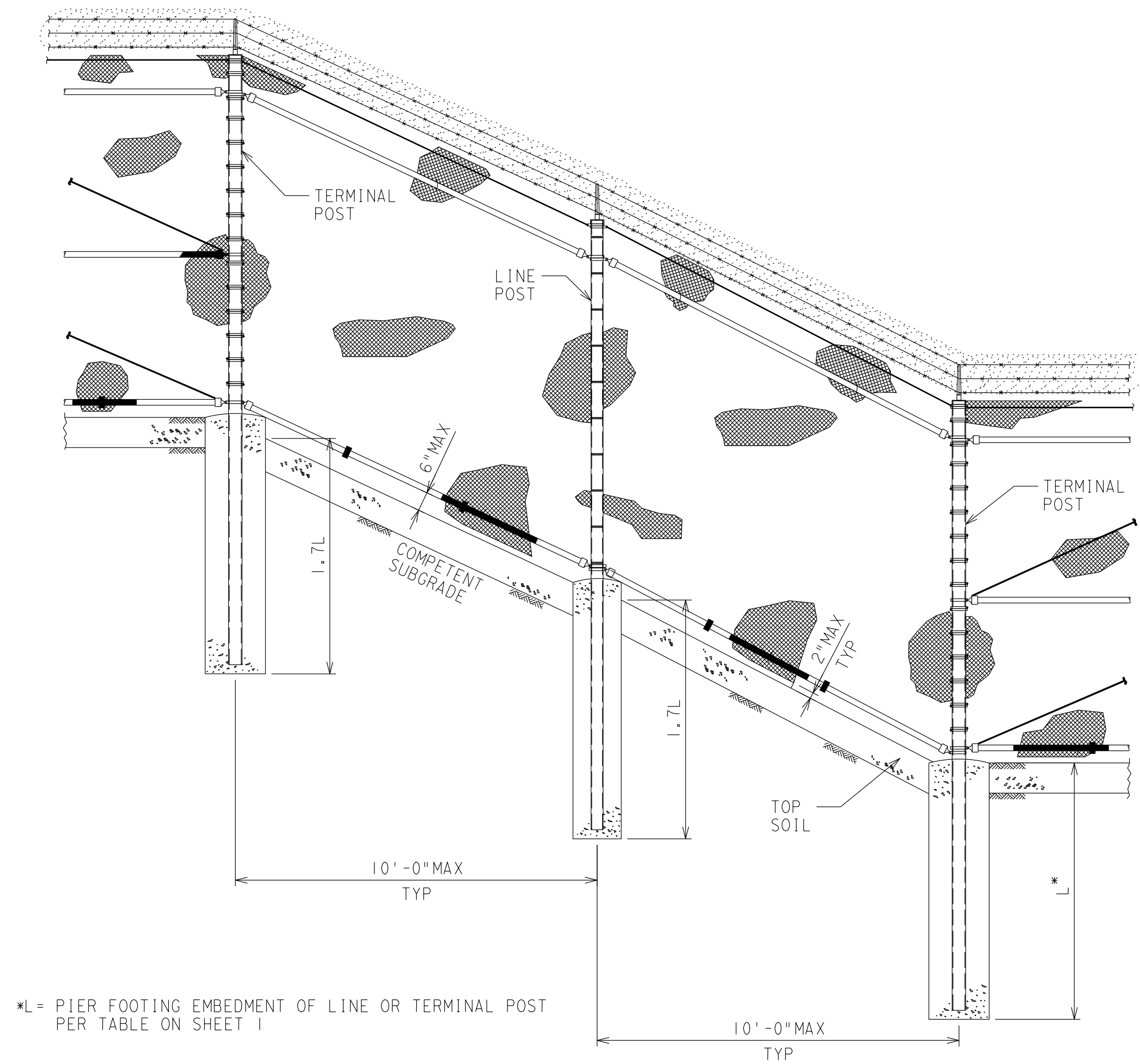
E

D

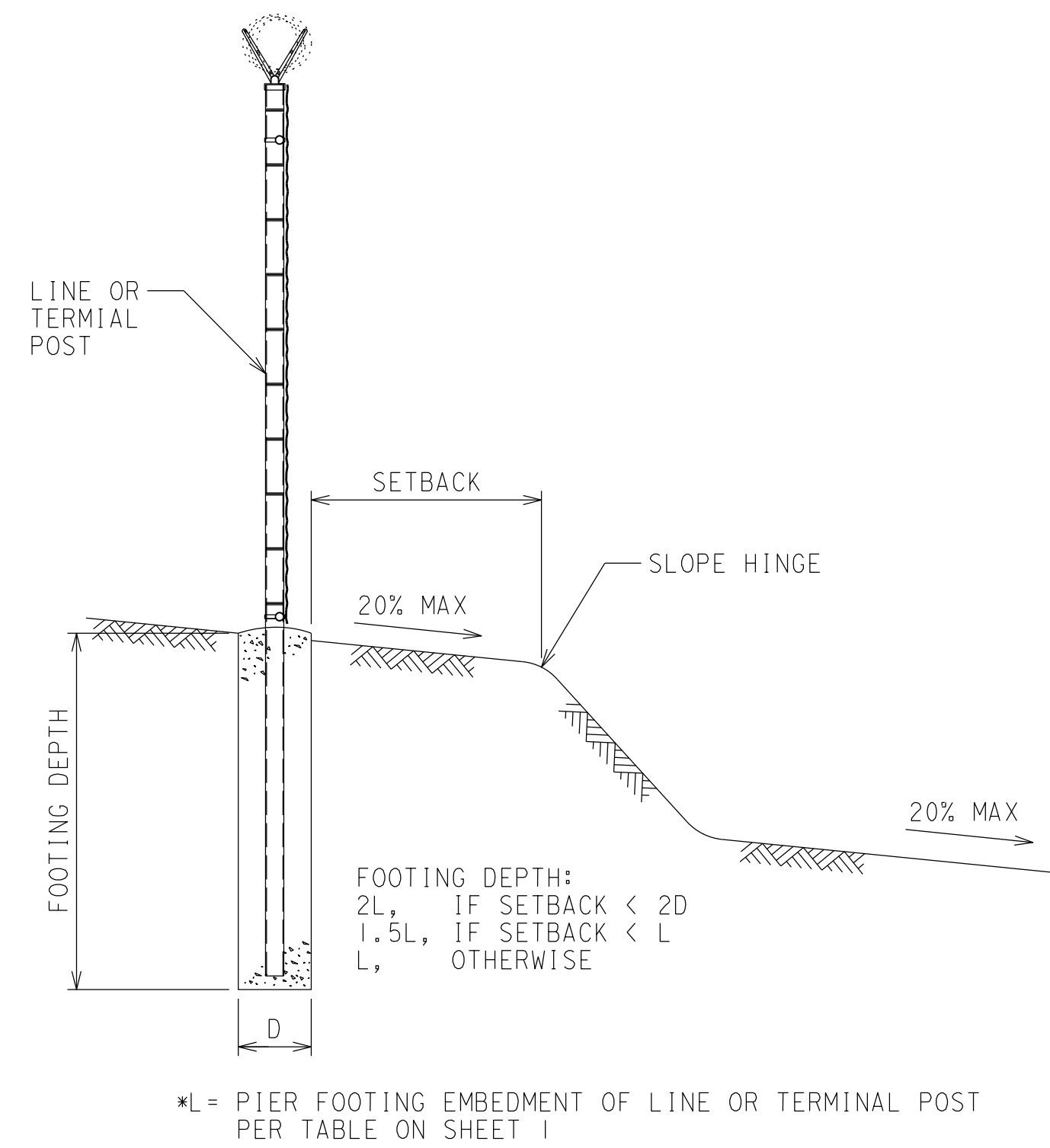
FOLD

C

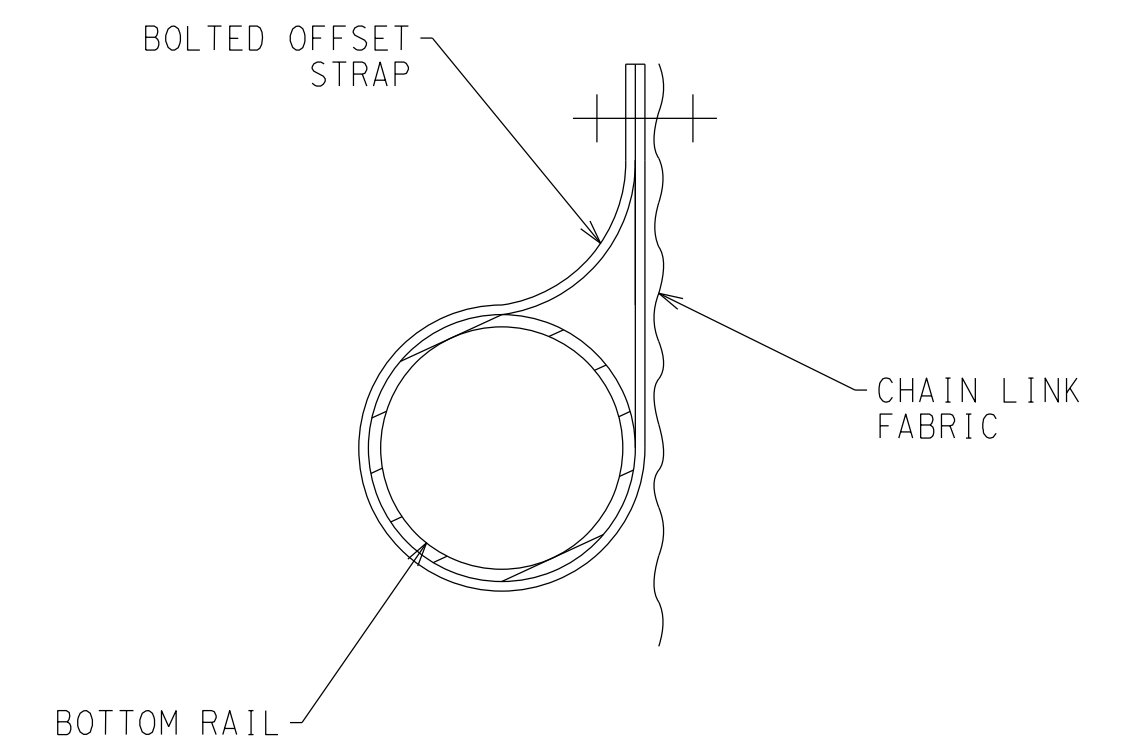
B



FENCE LINE PERPENDICULAR TO SLOPE HINGE 14  
NOT TO SCALE



FENCE LINE PARALLEL TO SLOPE HINGE 15  
NOT TO SCALE



BOLTED OFFSET STRAP DETAIL 16  
NOT TO SCALE



CIVIL DESIGN STANDARD		4
PROPERTY FENCE AND GATE DETAILS		
DEPARTMENT OF ENGINEERING		
PACIFIC GAS AND ELECTRIC COMPANY		
SAN FRANCISCO, CALIFORNIA		
MICROFILM		
BILL OF MATL		
DWG LIST		
SUPSDS		
SUPSD BY		
SHEET NO 4 OF 4 SHEETS		
3020646	REV	4

FOLD

C

DRAWING NUMBER  
3006024