

19

TABLE OF CONTENTS	
DESCRIPTION	SHEET
NOTES	1
PLATFORMS, LOCATION OF PLATFORM, FOUNDATIONS & DETAIL	2
TABLE 1, TYPICAL APPLICATION FOR TRANSMISSION SUBSTATION	3

GENERAL NOTES

1. USE THIS DRAWING FOR ALL NEW CONSTRUCTION
2. FOR CONSTRUCTION PRIOR TO 1958, SEE DRAWING #202699 & 022904
3. FURNISH CAP SCREWS, FLUSH SHELLS, FASTENING CLIPS, AND MACHINE BOLTS IN FIELD
4. GRATING IS TO HAVE MAIN BARS OF (3/8" X 1-3/8" AT 1-3/8" SPACING). CROSS BARS TO BE TWISTED BARS ON 4" CENTERS, WELDED FLUSH ON TOP. ALL ENDS TO HAVE BAR EDGES
5. GRATING AND ASSOCIATED PARTS SHALL BE GALVANIZED AFTER FABRICATION TO COMFORM WITH ASTM STANDARD SPECIFICATION A123 (LATEST REVISION)
6. SHOW LOCATION OF PLATFORM TO STRUCTURE (DIMENSION "Y") ON ARRANGEMENT OF FOUNDATION DRAWING
7. FOR BONDING OF PLATFORMS SEE (ES 067910, SH.6)
8. FOR GROUNDING OF PLATFORMS FOR SWITCHES MOUNTED ON WOOD POLES REFER TO (ES 067910, SH.7 FIG. 8)
9. CLEARANCE FROM ANY METAL COMPONENTS OF THE PLATFORM, TO FINISH GRADE, SHALL NOT BE LESS THAN 2 INCHES. STEP HEIGHT FROM FINISH GRADE TO TOP OF GRATING SHALL BE LIMITED TO 9/2" MAX, FOR STEP HEIGHTS GREATER THAN 9/2" USE ALTERNATE DESIGNS SHOWN ON CDS 393252
10. NOTE 9 ABOVE DOES NOT APPLY TO PLATFORM MOUNTED ON A FLOOR OR CONCRETE PAD.

ORDERING INSTRUCTIONS

1. FOR TRANSMISSION SUBSTATIONS SPECIFY ITEM NO. AND SIZE OF PLATFORM FROM TABLE 1, SHEET 3
2. FOR DISTRIBUTION SUBSTATIONS REFER TO "GUIDE FOR SELECTING SWITCH OPERATING PLATFORMS" (EDS 217700)

REFERENCES

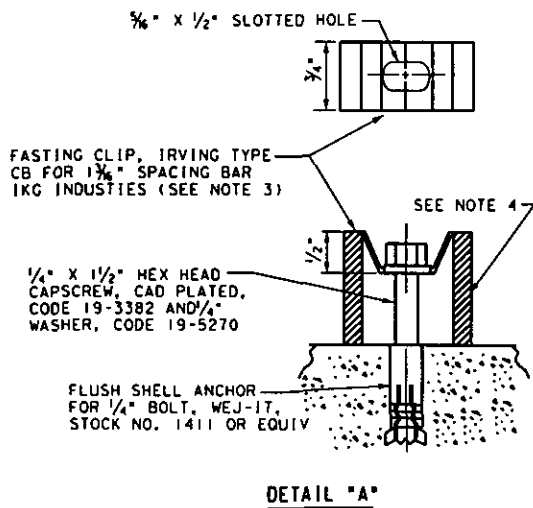
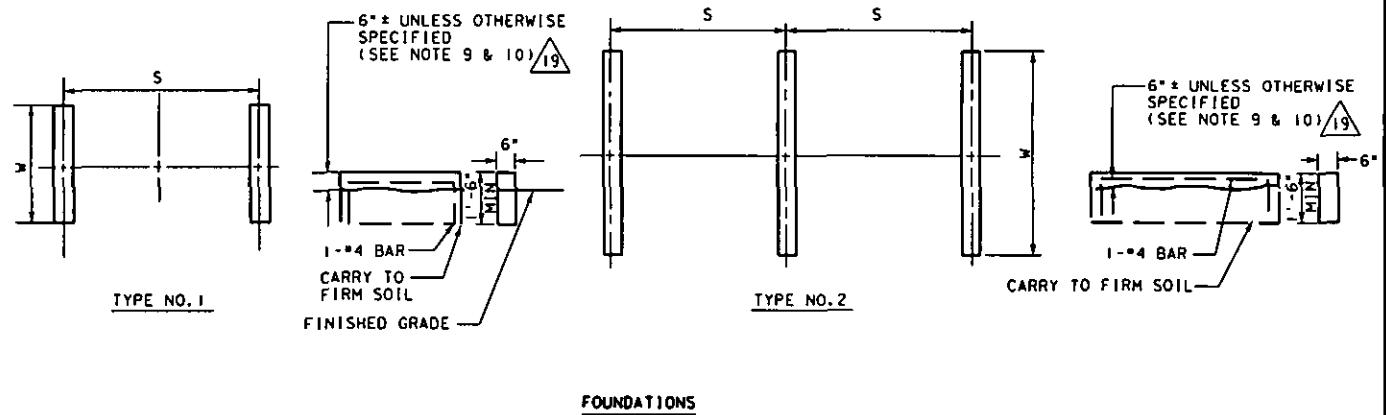
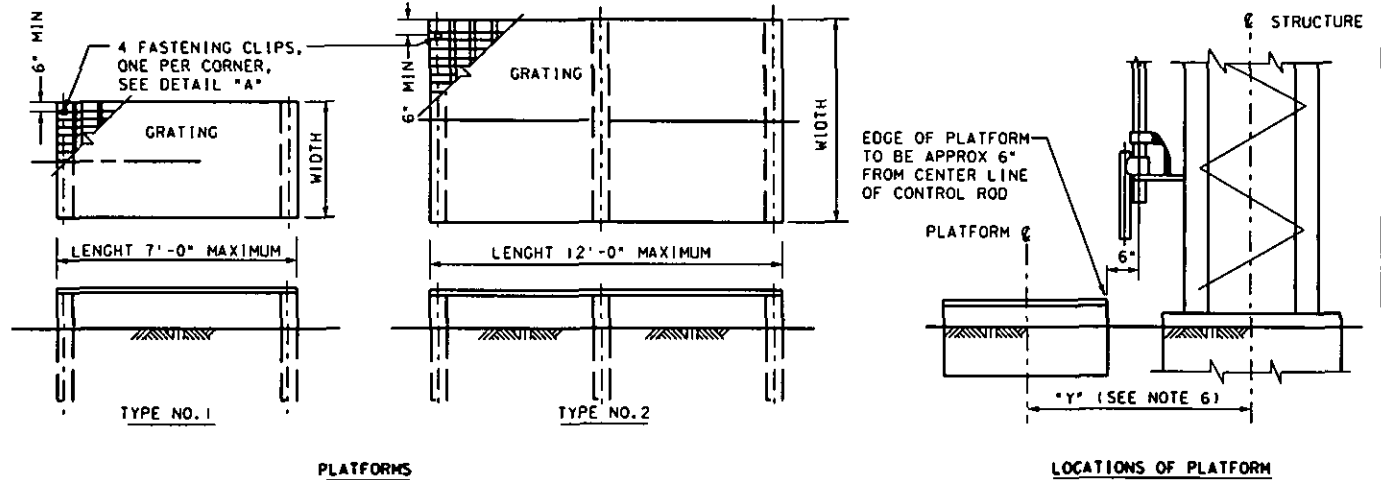
DWG NO.

GROUNDING REQUIREMENTS FOR OUTDOOR ELECTRICAL SUBSTATIONS _____ ES 067910
 SWITCH OPERATING PLATFORM ALTERNATIVE DESIGNS _____ COS 393252

SUBSTATION & TRANSMISSION	SUBSTATION	ELECTRICAL	GROUNDING AND BONDING	ACTIVE	STANDARD	SWITCHES	
BUSINESS LINE	FACILITY TYPE	DISCIPLINE	FACILITY NAME	STATUS	PROJECT	FACILITY COMPONENT	
19	12-1-05	REDRAWN & REVISED, UPDATED NOTE 9, ADDED NOTE 10 & CDS REFERENCE			2017945	FG	GA
18	12-17-01	REDRAWN & REVISED, RMV'D SH 2 AND MOVED IT TO 067910; RENUMBERED			STD	RIM/MLJ	GOD
		SH.3 TO SH.2; REV'D NOTES, DETAILS & MOVED ORDERING INSTRUCTIONS					
		TO SH 2					
17	8-6-99	ADDED NOTE 9				JA	BCG GOD

REV	DATE	DESCRIPTION	JOB NO	DSG/DWN	CHKD	SUPV	APVD	
REVISION 1		ENGINEERING STANDARD STEEL GRATING TYPE SWITCH OPERATING PLATFORMS DEPARTMENT OF ENGINEERING PACIFIC GAS AND ELECTRIC COMPANY SAN FRANCISCO, CALIFORNIA					B/M	
DSG	G.S.L.						DWG LIST	
DWN	L.P.Y.						SUPSDS	
CHKD	G.S.L.						SUPSD BY	
SUPV	K.L.C.						SHEET NO 10 of 3 SHEETS	
APVD	M.I.G						DRAWING NUMBER	REV
APVD	PKN, HH, KCT						034851	19
DATE	3-27-58							

CAD USER: FXG4 DATE: 11-08-05
 VECTOR: 034851.EDS
 RASTER:



STEEL GRATING TYPE
SWITCH OPERATING PLATFORM

PG&E CO.
SHEET 2 OF SHEETS

DRAWING NUMBER REV
03485119



TABLE 1: (TYPICAL APPLICATION FOR TRANSMISSION SUBSTATION)

ITEM	TYPE	SIZE OF PLATFORM	FOUNDATION		ARRANGEMENT	DWC. NO.	CODE
			W	S			
1	1	3' X 3'	3'-0/4"	2'-6"	60KV MAIN & AUXILIARY, BUS STRUCTURE (ONE SWITCH-MAIN BUS SIDE)	425556 406852	15-5036
2	1	3' X 4'	3'-0/4"	3'-6"	230KV OCB STRUCTURE (GROUND SWITCH)	400984	15-5044
3	1	3' X 5'	3'-0/4"	4'-6"	60KV SWITCH AND FUSE STRUCTURE (WITHOUT GROUND SWITCH) 60KV OCB STRUCTURE (ONE SWITCH ONLY) 230KV DOUBBLE BUS STRUCTURE (ONE SWITCH-BUS PARALLEL BAY) 230KV BUS SELECTOR SWITCH STRUCTURE 500KV SWITCH STRUCTURE (DISCONNECT SWITCH STRUCTURE)	413799 413799 44787 323151 328254 328609	15-5045
4	1	3' X 6'	3'-0/4"	5'-6"	60KV SWITCH AND FUSE STRUCTURE (WITH GROUND SWITCH) 60KV MAUN AND AUXILIARY BUS STRUCTURE 2 OR 3 SWITCHES AUX BUS SIDE	413799 321611 425556 406852	15-5046
5	1	3' X 7'	3'-0/4"	6'-6"	60KV OCB STRUCTURE (2 OR 3 SWITCHES) 60KV REGULATING TRANSFORMER STRUCTURE (2 OR 3 SWITCHES)	413799 310226	15-5047
6	2	3' X 8'	3'-0/4"	3'-9"	230KV OCB STRUCTURE (DISCONNECT AND BYPASS SWITCHES) 230KV OCB STRUCTURE (2 OR 3 SWITCHES) 500KV SWITCHES STRUCTURE (DISCONNECT AND GROUND SWITCHES)	400984 210654 326496 328609	15-5034
7	2	3' X 9'	3'-0/4"	4'-3"			15-5048
8	2	3' X 10'	3'-0/4"	4'-9"	230KV DOUBLE BUS STRUCTURE (2 SWITCHES)	44787	15-5031
9							
10	1	4' X 4'	4'-0/4"	3'-6"	44KV TO 70KV SWITCH ON WOOD POLE (FOR STATION USE ONLY)		15-5049
11	1	4' X 5'	4'-0/4"	4'-6"			15-5050
12	1	4' X 6'	4'-0/4"	5'-6"	60KV AIR SWITCH STRUCTURE (DISCONNECT SWITCH ONLY) 115KV MAIN & AUXILIARY BUS STRUCTURE (ONE SWITCH-MAIN BUS SIDE) 115KV OCB STRUCTURE (ONE SWITCH - BUS PARALLEL OCB) 115KV DOUBLE BUS STRUCTURE (ONE SWITCH - BUS PARALLEL BAY) 115KV BUS SELECTOR SWITCH STRUCTURE	313197 312032 422893 309950 325555	15-5051
13	1	4' X 7'	4'-0/4"	6'-6"			15-5052
14	2	4' X 8'	4'-0/4"	3'-9"	60KV AIR SWITCH STRUCTURE (DISCONNECT SWITCH & GROUND SWITCH) 115KV OCB STRUCTURE (2 OR 3 SWITCHES)	313197 422893 420188	15-5053
15	2	4' X 9'	4'-0/4"	4'-3"			15-5054
16	2	4' X 10'	4'-0/4"	4'-9"	115KV MAIN & AUX. BUS STRUCTURE (2 OR 3 SWITCHES-CENTER COLUMN) 115KV DOUBLE BUS STRUCTURE (12 SWITCHES)	312032 309950	15-5055

STEEL GRATING TYPE
SWITCH OPERATING PLATFORM

PG&E CO.

DRAWING NUMBER REV

SHEET 3 OF 3 SHEETS

03485119