



# You may be able to **save 18%** on your electricity bill with FERA

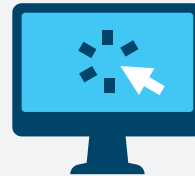
**Income guidelines change every year:** Find out if you qualify for the discount today.



Lower your  
monthly bill



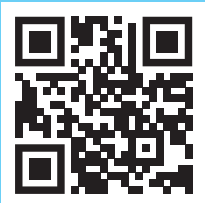
Households  
can qualify based  
on income



Applying takes  
5 minutes



Your personal  
information is  
kept secure and  
confidential



The Family Electric Rate Assistance (FERA) program is for households of all sizes and has higher income requirements than the California Alternate Rates for Energy (CARE) program. Learn more at [pge.com/fera](https://pge.com/fera) or call **1-800-743-5000**.