



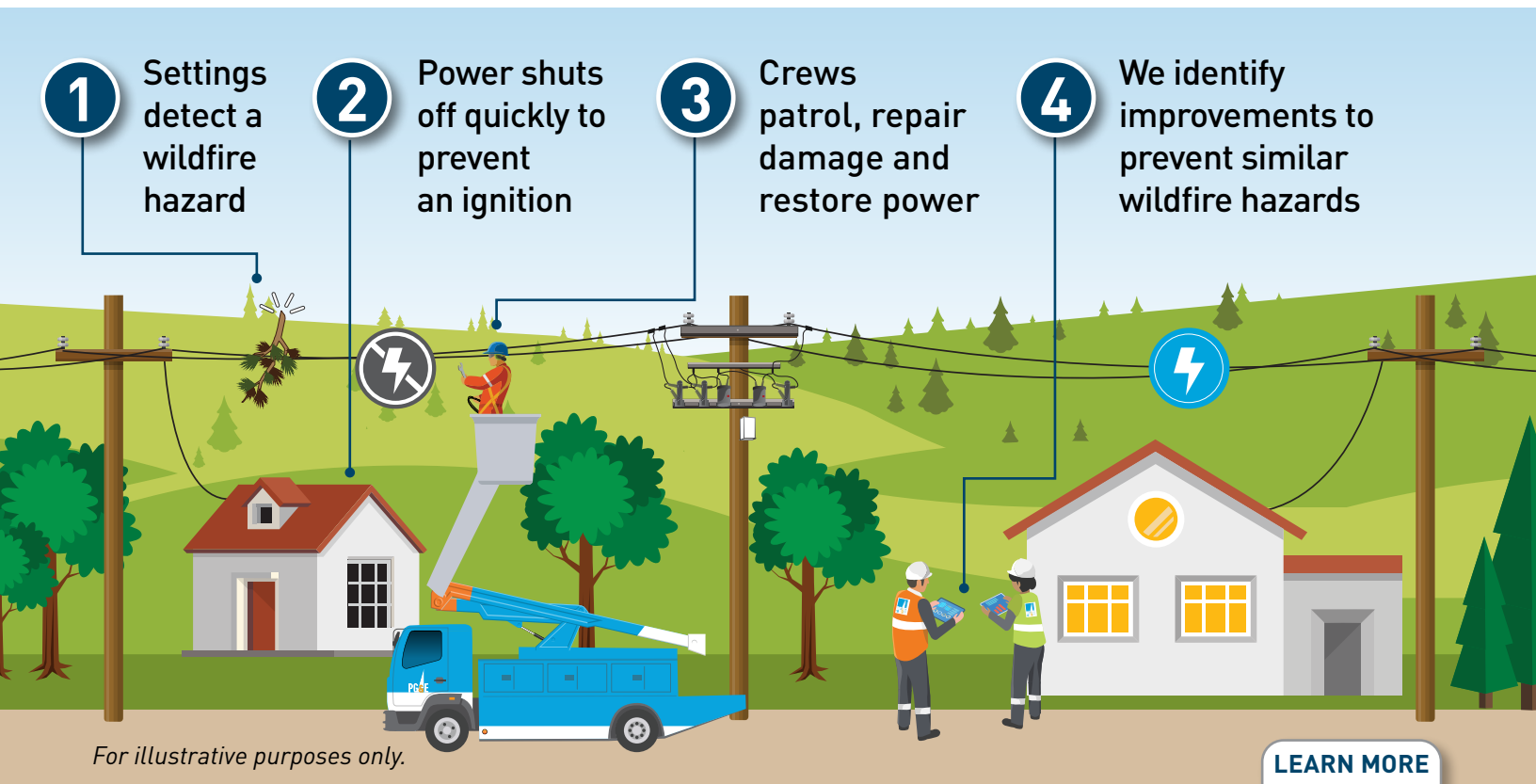
Enhanced Powerline Safety Settings



Preventing wildfires in your community

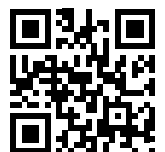
PG&E installed safety settings on powerlines in and near high fire-risk areas to help prevent wildfires. They are known as Enhanced Powerline Safety Settings, or EPSS.

If a hazard is detected on a powerline, these settings shut off power quickly. This helps prevent an ignition that could cause a wildfire.



To learn more about Enhanced Powerline Safety Settings, scan the code or visit pge.com/epss.

LEARN MORE



By preventing ignitions, we can stop wildfires from starting.



Last year, we saw a **65%** reduction in ignitions on powerlines with these settings*

**Based on an evaluation of the effectiveness of EPSS under conditions of elevated likelihood of destructive fire outcomes (R3 Fire Potential Index rating), compared to the 2018-2020 average prior to the establishment of EPSS.*



Safety settings prevented a possible ignition in Santa Cruz

We are making our system stronger and safer to keep power on and prevent wildfires

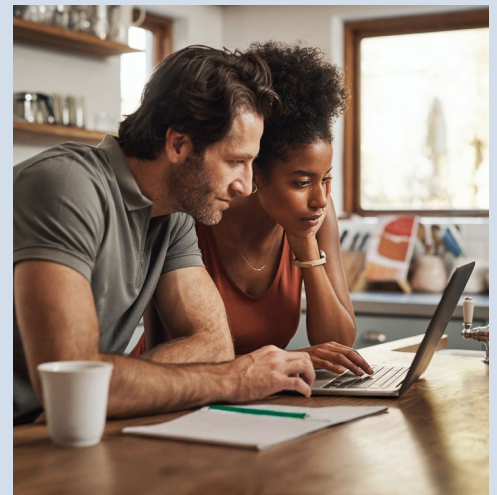
Unplanned outages may occur when a hazard hits a powerline. We are taking action to prevent hazards that cause outages and make our system safer by:

- Trimming trees near powerlines to prevent branches from hitting the powerline
- Installing guards to stop animals from contacting the powerline
- Putting devices on the powerline that help us locate the outage and restore power quickly
- Putting equipment on the powerline that makes outages smaller

Helping you prepare and keeping you informed during a safety outage

We will share updates with you and let you know your estimated power restoration time through your preferred contact method. You can find resources at pge.com/epss and learn about:

- Outage alerts and how to update your contact information
- Free and reduced-cost backup power options
- How safety settings protect you from wildfire risk



You can also learn about other wildfire safety work near you by visiting pge.com/progressmap.



For translation support in 240+ languages, or to request a print material in Braille, large print or audio, call **1-800-743-5000**.

Some of the measures included in this document are contemplated as additional precautionary measures intended to further reduce the risk of wildfires. "PG&E" refers to Pacific Gas and Electric Company, a subsidiary of PG&E Corporation. ©2025 Pacific Gas and Electric Company. All rights reserved. CCC-0625-5552. 7/8/2025.