



Undergrounding

A Safe, Strong and More Affordable Energy Future

To prevent wildfires and help keep the power on, PG&E is installing thousands of miles of powerlines underground.

Benefits of Undergrounding

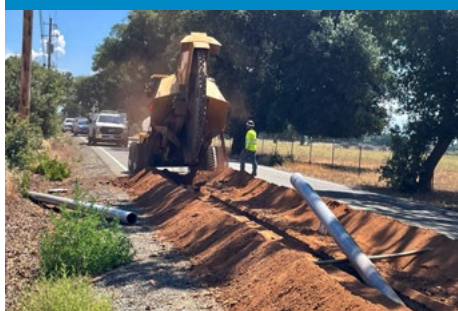
Undergrounding is one of the most effective ways to reduce wildfire risk and long-term costs to customers.

SAFETY



Eliminates nearly all wildfire ignition risk at that location

RELIABILITY



Reduces power outages related to wildfire safety and weather

LONG-TERM SAVINGS



Lowers ongoing vegetation management and maintenance costs

Undergrounding Progress and Workplans

We are focusing our undergrounding efforts in areas where we can have the greatest impact on reducing wildfire risk.



WE HAVE COMPLETED

over **1,040** miles*
of undergrounding since 2021.



WE PLAN TO COMPLETE

~**1,900** total miles*
of this work by the end of 2027.

*Data is as of 10/20/25 and includes Butte Rebuild mileage.

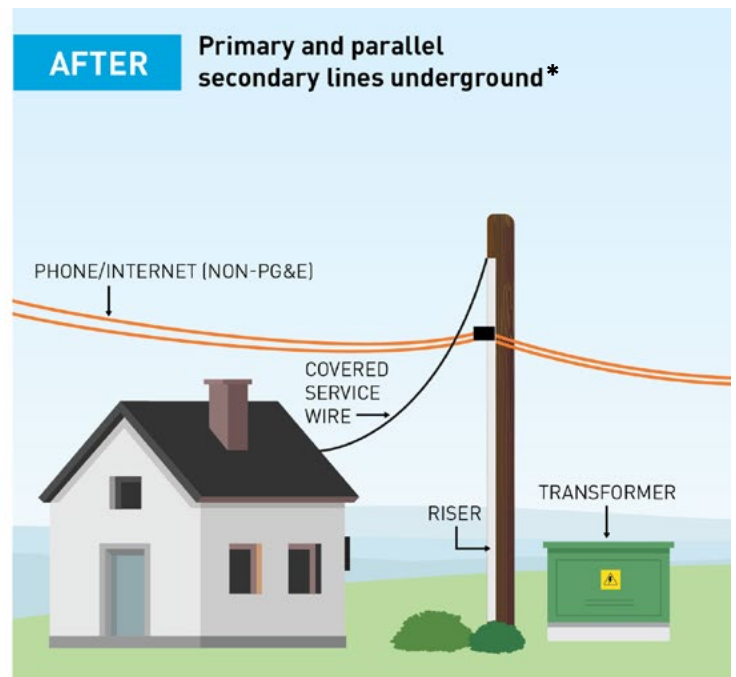
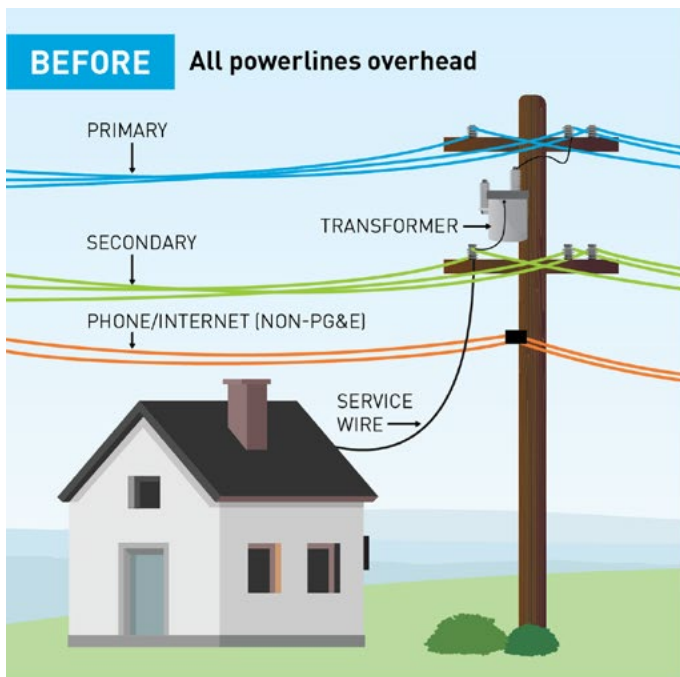
To see where wildfire safety upgrades are happening, scan the QR code or visit pge.com/wildfiresafety-upgrades.



What can you expect?

We are moving powerlines that have the highest ignition risk underground.

This generally includes undergrounding the powerlines that deliver electricity to your neighborhood. Some equipment, like the service line connecting to your home or non-PG&E-owned telecommunications lines, will remain. Additional aboveground equipment may need to be installed.



For illustrative purposes only. Not to scale.

**When secondary lines are in line with primary lines.*

Working together

We will keep customers and communities informed throughout this process. We will send details and any schedule updates in communications including letters, emails, text messages and phone calls.

Questions? Contact the PG&E Undergrounding and System Upgrades Team at: **1-877-265-1399** or email at **wildfiresafety@pge.com**.



For translation support in 240+ languages, or to request a print material in Braille, large print or audio, call **1-800-743-5000**.

"PG&E" refers to Pacific Gas and Electric Company, a subsidiary of PG&E Corporation. ©2025 Pacific Gas and Electric Company. All rights reserved. CCC-1025-5887. 10/23/2025.