



# Undergrounding

## A Safer, Stronger and More Affordable Energy Future

AUGUST 2024

To prevent wildfires and help keep the power on, PG&E is installing 10,000 miles of powerlines underground.

### Benefits of Undergrounding

Undergrounding is one of the most effective ways to reduce wildfire risk and long-term costs to customers.

#### SAFETY



Nearly eliminates wildfire ignition risk at that location

#### RELIABILITY



Reduces wildfire safety and weather-related power outages

#### LONG-TERM SAVINGS



Lowers ongoing vegetation management and maintenance costs

### Undergrounding Progress & Workplans

We are focusing our undergrounding efforts in areas where we can have the greatest impact on reducing wildfire risk.



**WE HAVE COMPLETED**

**~690 miles\***

of undergrounding since 2021



**WE PLAN TO COMPLETE**

**over 1,000 miles\***

of undergrounding between 2024 and 2026

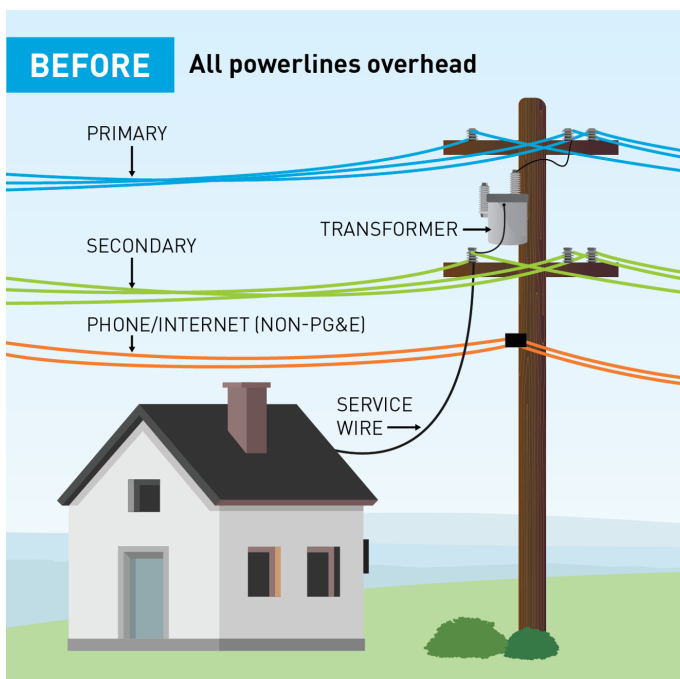
\* Data is as of 7/1/24 and includes Butte Rebuild mileage.

To learn more and view maps of our workplans, visit [pge.com/undergrounding](https://pge.com/undergrounding).

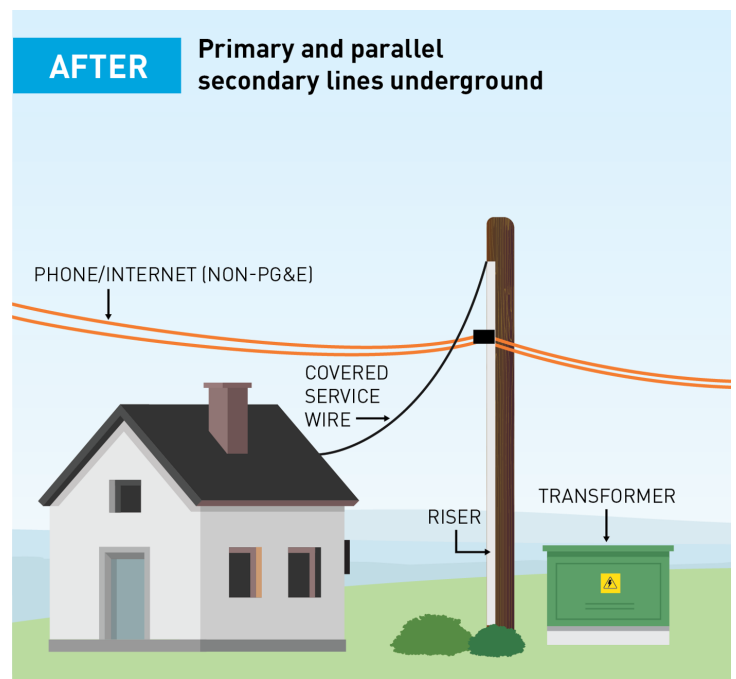
# What can you expect?

## We are moving powerlines that have the highest ignition risk underground.

This generally includes undergrounding the powerlines that deliver electricity to your neighborhood. Some equipment, like the service line connecting to your home or non-PG&E-owned telecommunications lines, will remain. Additional aboveground equipment may need to be installed.



For illustrative purposes only. Not to scale.



## Working together

We will keep customers and communities informed throughout this process. We will send details and any schedule updates in communications including letters, emails, text messages and phone calls.



For translation support in 240+ languages, or to request a print material in Braille, large print or audio, call **1-800-743-5000**.