

# Solar Billing Plan Guide



For business customers

# Overview

Thank you for choosing renewable energy and helping the environment

Within this overview, you will find:


- > **Solar Billing Plan basics**
- > **Electric Time-of-Use Rate Plans**
- > **Solar Billing Plan Credit Values**
- > **Billing for Excess Energy at True-Up**
- > **The benefits of renewable energy with battery storage**





# Solar Billing Plan basics

Under the Solar Billing Plan, electricity generated by your solar or renewable energy system is first used for your business. Solar or renewable energy production can vary depending on time of day and season.


### Time of day impacts


 **Daytime:** Your business will use energy produced by your renewable energy system and receive credits for excess energy sent to the grid.

 **Evening:** When the renewable energy system isn't producing energy, your business will use energy from the grid or stored energy from the battery storage.

 **Savings Tip:** Use renewable energy that's stored in a battery to minimize energy used from the grid which can reduce your monthly energy bill.

### Seasonal weather impacts

 **Summer:** The renewable energy system may produce more energy during summer's longer and sunnier days. Your business may receive more credits if your system produces more energy than your business uses.

 **Winter:** The renewable energy system may produce less energy during the winter when days are shorter and cloudy. Your business may see higher charges during these months when your energy usage is higher.

Log in to [myaccount.pge.com](https://myaccount.pge.com) to review your energy use and see how weather impacts your renewable energy system.



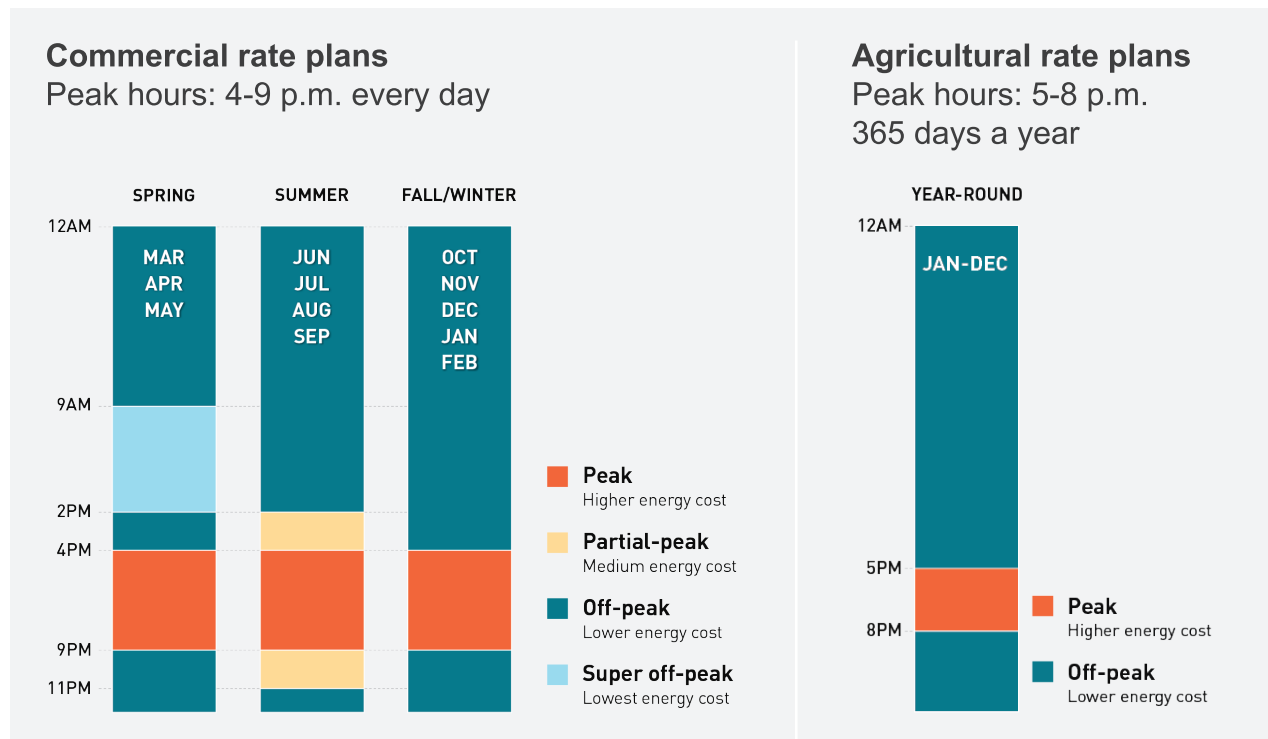
# Electric Time-of-Use Rate Plans

Solar Billing Plan customers are required to enroll in a Time-of-Use plan. You may keep your current Time-of-Use plan or switch plans.

Time-of-Use plans can help you save on energy costs. These plans offer lower energy rates when energy demand is low. So, when you switch your energy use to off-peak or super off-peak hours, you can reduce your business expenses.

[Click here](#) for more information on Commercial Time-of-Use rate plans.

[Click here](#) for more information on Agricultural Time-of-Use rate plans.



# Solar Billing Plan Credit Values

Your business will earn credits by sending excess solar energy to the grid. The value of this energy is set by the California Public Utilities Commission (CPUC) and depends on the availability of energy throughout the year.\* These values vary by day, month and season. Your business will earn higher credits for energy sent to the grid during peak hours, 4 p.m. to 9 p.m. (or 5 p.m. to 8 p.m. for Agricultural businesses).

With a battery, your business may use stored energy when your solar energy isn't available. This can help maximize energy savings.

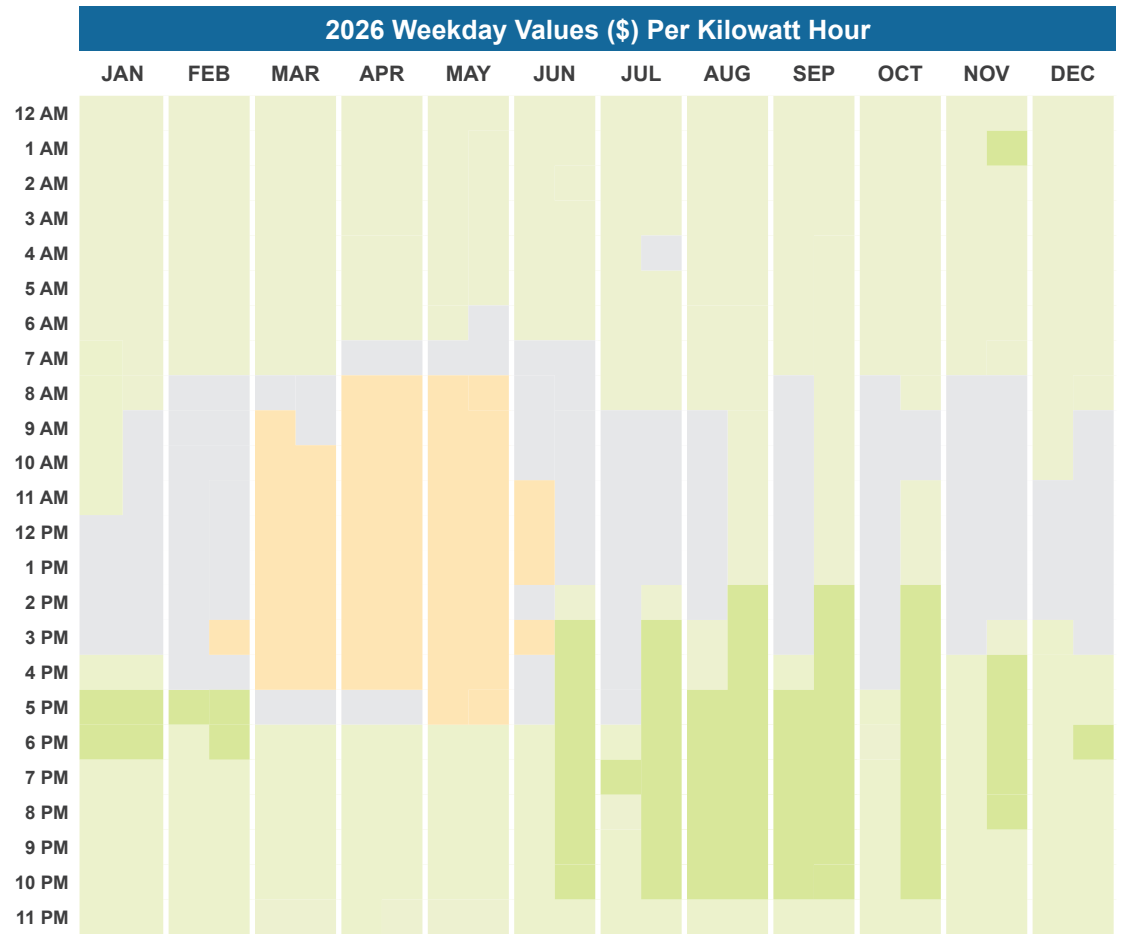
Your business will use available credits to offset monthly charges. Any unused credits will be applied to offset charges in future bills. To track your available credits, view your Energy Export Credit Bank in the Monthly Energy Statement.

The chart to the right is for representation purposes only. For detailed values [click here](#).



**Savings Tip:** Maximize your savings by using all your renewable energy for your business.

\*For Community Choice Aggregation (CCA) customers and Direct Access providers, check with your provider for generation export values.



**Energy Produced**

0.10061 - 1.04281	Highest value for credits
0.06750 - 0.10060	Higher value for credits
0.03388 - 0.06749	Average value for credits
0.00000 - 0.03387	Lower value for credits

**Energy Delivered**

0.00100 - 0.35038	Highest value for credits
0.00070 - 0.00099	Higher value for credits
0.00035 - 0.00069	Average value for credits
0.00001 - 0.00034	Lower value for credits



# Billing for Excess Energy at True-Up

At the end of your 12-month billing period, when your business sends more energy to the grid than you used over the 12-month period, your statement will show credit calculations for this excess energy.

1. Monthly Energy Export Credits received for this excess energy are not allowed under the Solar Billing Plan. To correct this, a **True-Up Credit Adjustment charge** will be applied for both Energy Produced and Energy Delivered for the excess energy sent to the grid.

2. Instead, a **Net Surplus Compensation (NSC) credit** may be calculated for this excess energy at the fair market value set by CPUC. **This NSC value can be lower than credits you received and result in you owning money back.** If you are a customer of a Community Choice Aggregator (CCA), your NSC rate will be determined by your CCA.

To see the current rate, visit [Getting credit for surplus energy](#)



**Savings Tip:** To maximize bill savings, use all your renewable energy to power your business.



1.	True-Up Credit Adjustment for credits previously received	\$350
2.	Recalculated credit value based on Net Surplus Compensation	- \$275
<hr/>		
3.	Amount owed back to PG&E	\$75
<hr/>		

This is an example of how the True Up Credit Adjustment charge and the Net Surplus Compensation credit could apply to your True-Up Statement.



# The benefits of renewable energy with battery storage

Adding battery storage to your renewable energy system can maximize your investment and savings.

Save on bills when you use stored energy during peak demand times when energy is most expensive. A battery storage system will also provide power to your business during grid outages.

Explore adding a battery storage system with your contractor.

[Learn more about battery storage](#)

**Charge your battery with excess energy when energy prices are lower.**

**In the evening, typically from 4 p.m. to 9 p.m., use stored energy when energy prices are higher.\***

\*Some rate plans peak hours are from 5 p.m. to 8 p.m. Check your energy bill for specific peak hours.



# Your new monthly PG&E Energy Statement

As a Solar Billing Plan customer, you will continue to receive a **monthly energy statement** from PG&E.

Your monthly energy statement depends on four factors:

Credits\* earned for renewable energy produced and energy delivered to the grid.

Charges for energy produced and energy delivered by PG&E when your solar energy system cannot meet your energy needs.

Other charges such as non-bypassable charges included for energy efficiency programs, Customer Charge, and Demand Charge.

Taxes including local and municipal taxes.

See details on the next page.



*\*Credit value is set when your system receives permission to operate.*

# Monthly energy statement



CLICK THE NUMBER TABS FOR A DETAILED EXPLANATION

## 1 Service for

This indicates where your charges were incurred. Some customers receive PG&E service at multiple locations.

**ENERGY STATEMENT**

[www.pge.com/MyEnergy](http://www.pge.com/MyEnergy)

Account No: 1023456789-0

Statement Date: 01/12/2026

**Due Date: 01/29/2026**

**1 Service For:**

AGRICULTURAL BUSINESS CUSTOMER  
1234 MAIN STREET  
ANYTOWN, CA 00000

---

**Questions about your bill?**

Solar Hotline: 1-877-743-4112 M-F 7-6  
General: 1-800-743-5000  
Mon-Fri 7 a.m.- 7 p.m.  
Saturday 8 a.m.- 5 p.m.  
[www.pge.com/MyEnergy](http://www.pge.com/MyEnergy)

---

**Ways To Pay**

[www.pge.com/waystopay](http://www.pge.com/waystopay)

---

**Your Enrolled Programs**

Solar Billing Plan

**Your Account Summary**

Amount Due on Previous Statement	\$1,211.98
Payment(s) Received Since Last Statement	0.00
Previous Unpaid Balance	\$1,211.98
Current Electric Monthly Charges	\$757.33
Taxes	57.77

**Total Amount Due by 01/29/2026** **\$2,027.08**

---

**Solar Billing Plan Highlights (08/02/2025 - 09/15/2025)**

Estimated annual True-Up date	05/2026
Energy you sent to the grid	-3570 kWh
Credits you earned this bill period	\$646.48

- Any unused credits for energy your system produces and sends to the grid (Energy Export Credits) will be applied to next month's bill.
- The credits you accrue will be reconciled at your annual True-Up.
- To view charges and credits for this bill period see "Details of Solar Billing Plan Charges" page.

◀ previous page | next page ▶

9

# Monthly energy statement



CLICK THE NUMBER TABS FOR A DETAILED EXPLANATION

## 2 Your account summary

This is an overview of:

- Payments received
- PG&E current electric charges
- CCA electric charges, if applicable
- PG&E current gas charges, if applicable

Note that CCA electric charges are for energy purchased by the CCA. PG&E electric charges are for delivering CCA energy to your business.

**ENERGY STATEMENT**

[www.pge.com/MyEnergy](http://www.pge.com/MyEnergy)

Account No: 1023456789-0

Statement Date: 01/12/2026

**Due Date: 01/29/2026**

**1 Service For:**

AGRICULTURAL BUSINESS CUSTOMER  
1234 MAIN STREET  
ANYTOWN, CA 00000

**5 Questions about your bill?**

Solar Hotline: 1-877-743-4112 M-F 7-6  
General: 1-800-743-5000  
Mon-Fri 7 a.m.- 7 p.m.  
Saturday 8 a.m.- 5 p.m.  
[www.pge.com/MyEnergy](http://www.pge.com/MyEnergy)

**Ways To Pay**

[www.pge.com/waystopay](http://www.pge.com/waystopay)

**Your Enrolled Programs**

Solar Billing Plan

**2 Your Account Summary**

Amount Due on Previous Statement	\$1,211.98
Payment(s) Received Since Last Statement	0.00
Previous Unpaid Balance	\$1,211.98
Current Electric Monthly Charges	\$757.33
Taxes	57.77
<b>Total Amount Due by 01/29/2026</b>	<b>\$2,027.08</b>

**3 Solar Billing Plan Highlights (08/02/2025 - 09/15/2025)**

Estimated annual True-Up date	05/2026
Energy you sent to the grid	-3570 kWh
Credits you earned this bill period	\$646.48

- Any unused credits for energy your system produces and sends to the grid (Energy Export Credits) will be applied to next month's bill.
- The credits you accrue will be reconciled at your annual True-Up.
- To view charges and credits for this bill period see "Details of Solar Billing Plan Charges" page.

◀ previous page | next page ▶

10

# Monthly energy statement



CLICK THE NUMBER TABS FOR A DETAILED EXPLANATION

## 3 Solar Billing Plan highlights

This is an overview of the energy you sent to the grid and credits you earned for the month. It also includes your estimated annual True-Up date.

**ENERGY STATEMENT**

[www.pge.com/MyEnergy](http://www.pge.com/MyEnergy)

Account No: 1023456789-0

Statement Date: 01/12/2026

**Due Date: 01/29/2026**

---

**1 Service For:**

AGRICULTURAL BUSINESS CUSTOMER  
1234 MAIN STREET  
ANYTOWN, CA 00000

**5 Questions about your bill?**

Solar Hotline: 1-877-743-4112 M-F 7-6  
General: 1-800-743-5000  
Mon-Fri 7 a.m.- 7 p.m.  
Saturday 8 a.m.- 5 p.m.  
[www.pge.com/MyEnergy](http://www.pge.com/MyEnergy)

**Ways To Pay**

[www.pge.com/waystopay](http://www.pge.com/waystopay)

**Your Enrolled Programs**

Solar Billing Plan

**2 Your Account Summary**

Amount Due on Previous Statement	\$1,211.98
Payment(s) Received Since Last Statement	0.00
Previous Unpaid Balance	\$1,211.98
Current Electric Monthly Charges	\$757.33
Taxes	57.77
<b>Total Amount Due by 01/29/2026</b>	<b>\$2,027.08</b>

**3 Solar Billing Plan Highlights (08/02/2025 - 09/15/2025)**

Estimated annual True-Up date	05/2026
Energy you sent to the grid	-3570 kWh
Credits you earned this bill period	\$646.48

- Any unused credits for energy your system produces and sends to the grid (Energy Export Credits) will be applied to next month's bill.
- The credits you accrue will be reconciled at your annual True-Up.
- To view charges and credits for this bill period see "Details of Solar Billing Plan Charges" page.

◀ previous page | next page ▶

11

# Monthly energy statement



CLICK THE NUMBER TABS FOR  
A DETAILED EXPLANATION

## 4 At-a-glance account data

Your account number and due date are at the top of every page. It is good to have this information handy if you call us.

**ENERGY STATEMENT**

[www.pge.com/MyEnergy](http://www.pge.com/MyEnergy)

Account No: 1023456789-0

Statement Date: 01/12/2026

**Due Date: 01/29/2026**

**1 Service For:**

AGRICULTURAL BUSINESS CUSTOMER  
1234 MAIN STREET  
ANYTOWN, CA 00000

**5 Questions about your bill?**

Solar Hotline: 1-877-743-4112 M-F 7-6  
General: 1-800-743-5000  
Mon-Fri 7 a.m.- 7 p.m.  
Saturday 8 a.m.- 5 p.m.  
[www.pge.com/MyEnergy](http://www.pge.com/MyEnergy)

**Ways To Pay**

[www.pge.com/waystopay](http://www.pge.com/waystopay)

**Your Enrolled Programs**

Solar Billing Plan

**2 Your Account Summary**

Amount Due on Previous Statement	\$1,211.98
Payment(s) Received Since Last Statement	0.00
Previous Unpaid Balance	\$1,211.98
Current Electric Monthly Charges	\$757.33
Taxes	57.77

**3 Total Amount Due by 01/29/2026** **\$2,027.08**

**Solar Billing Plan Highlights (08/02/2025 - 09/15/2025)**

Estimated annual True-Up date	05/2026
Energy you sent to the grid	-3570 kWh
Credits you earned this bill period	\$646.48

- Any unused credits for energy your system produces and sends to the grid (Energy Export Credits) will be applied to next month's bill.
- The credits you accrue will be reconciled at your annual True-Up.
- To view charges and credits for this bill period see "Details of Solar Billing Plan Charges" page.

◀ previous page | next page ▶

12

# Monthly energy statement



CLICK THE NUMBER TABS FOR  
A DETAILED EXPLANATION

## 5 Questions about your bill?

If you have any questions, feel free to contact us using the dedicated Solar Hotline found here.

**ENERGY STATEMENT**

[www.pge.com/MyEnergy](http://www.pge.com/MyEnergy)

Account No: 1023456789-0

Statement Date: 01/12/2026

**Due Date: 01/29/2026**

**1 Service For:**

AGRICULTURAL BUSINESS CUSTOMER  
1234 MAIN STREET  
ANYTOWN, CA 00000

**5 Questions about your bill?**

Solar Hotline: 1-877-743-4112 M-F 7-6  
General: 1-800-743-5000  
Mon-Fri 7 a.m.- 7 p.m.  
Saturday 8 a.m.- 5 p.m.  
[www.pge.com/MyEnergy](http://www.pge.com/MyEnergy)

**Ways To Pay**

[www.pge.com/waystopay](http://www.pge.com/waystopay)

**Your Enrolled Programs**

Solar Billing Plan

**2 Your Account Summary**

Amount Due on Previous Statement	\$1,211.98
Payment(s) Received Since Last Statement	0.00
Previous Unpaid Balance	\$1,211.98
Current Electric Monthly Charges	\$757.33
Taxes	57.77
<b>Total Amount Due by 01/29/2026</b>	<b>\$2,027.08</b>

**3 Solar Billing Plan Highlights (08/02/2025 - 09/15/2025)**

Estimated annual True-Up date	05/2026
Energy you sent to the grid	-3570 kWh
Credits you earned this bill period	\$646.48

- Any unused credits for energy your system produces and sends to the grid (Energy Export Credits) will be applied to next month's bill.
- The credits you accrue will be reconciled at your annual True-Up.
- To view charges and credits for this bill period see "Details of Solar Billing Plan Charges" page.

# Monthly energy statement



CLICK THE NUMBER TABS FOR A DETAILED EXPLANATION

## 6 a Details of Solar Billing Plan charges

This section shows:

- **Energy Produced**
  - Charges for electricity provided from the grid to your property based on the Time-of-Use (TOU) rate plan shown on your bill
  - Credits for renewable energy produced and sent to the grid
- **Energy Delivered**
  - Charges for electricity delivered from the grid to your property
  - Credits for renewable energy delivered to the grid
- **Other Charges** including Customer Charge, Non-bypassable Charges, and Demand Charge, if applicable.

[Learn more about Agricultural TOU rate plans](#)

[Learn more about Commercial TOU rate plans](#)

**ENERGY STATEMENT**

[www.pge.com/MyEnergy](http://www.pge.com/MyEnergy)

Account No: 1023456789-0

Statement Date: 01/12/2026

**Due Date: 01/29/2026**

---

**6 a** **Details of Solar Billing Plan Charges**

08/02/2025 to 09/15/2025 (45 billing days)

Service For: 1234 Main Street  
 Service Agreement ID: 9087654321  
 Rate Schedule: AGA1 Ag<35 kW Low Use  
 Enrolled Programs: Solar Billing Plan

**08/02/2025 to 08/31/2025**

<b>Energy Produced</b>			
Peak	254.210000 kWh	@ \$0.26701	\$67.88
Off Peak	1,772.010000 kWh	@ \$0.14733	261.07
Energy Export Credits Applied		@ prices vary	-291.58
<b>Energy Delivered</b>			
Peak	254.210000 kWh	@ \$0.25402	64.57
Off Peak	1,772.010000 kWh	@ \$0.20776	368.15
Energy Export Credits Applied		@ prices vary	-132.07
<b>Other Charges and Credits</b>			
Customer Charge	30 days	@ \$0.68895	20.67
Non-Bypassable Charges	2,026.220000 kWh	@ \$0.03046	61.72
Demand Charge <sup>1</sup>			
Max Demand	3.390000 kW	@ \$12.75000	43.22

**09/01/2025 to 09/15/2025**

<b>Energy Produced</b>			
Peak	148.420000 kWh	@ \$0.26701	\$39.63
Off Peak	1,035.190000 kWh	@ \$0.14733	152.51
Energy Export Credits Applied		@ prices vary	-192.14
<b>Energy Delivered</b>			
Peak	148.420000 kWh	@ \$0.24638	36.57
Off Peak	1,035.190000 kWh	@ \$0.20012	207.16
Energy Export Credits Applied		@ prices vary	-18.36
<b>Other Charges and Credits</b>			
Customer Charge	15 days	@ \$0.68895	10.33
Non-Bypassable Charges	1,183.610000 kWh	@ \$0.03046	36.05
Demand Charge <sup>1</sup>			
Max Demand	3.575600 kW	@ \$12.28000	21.95

**Service Information**

Meter # 1098765432

Imports 3,209.832000 kWh

Exports -3,569.832000 kWh

Serial G

Rotating Outage Block 10A

**Additional Messages**

For more details on Solar Billing Plan visit [www.pge.com/solarbillingplan](http://www.pge.com/solarbillingplan)

Reminder: Monitor your solar system performance levels monthly to maximize savings. Please contact your solar contractor to learn more about the performance monitoring services or if you have concerns over system performance

---

**6 b**

**Solar Billing Plan Charges**

**\$757.33**

---

**Taxes**

These Taxes will also appear in Your Account Summary

Energy Commission Tax	\$0.97
Oakland Utility Users' Tax	56.80

**Total Taxes**

**\$57.77**

<sup>1</sup> Demand charges are prorated for the number of days in each rate period

To see your hourly Energy Export Credit cost and usage details log into My Account at [www.pge.com](http://www.pge.com) and select All Usage and Rates Tasks, and then select Energy Usage Details.



# Monthly energy statement



CLICK THE NUMBER TABS FOR A DETAILED EXPLANATION



## 6b Details of Solar Billing Plan charges

**Demand Charge** is calculated using the 15-minute interval in each billing month when your business uses the most electricity.

Save when you can lower your highest usage 15-minute interval.



**ENERGY STATEMENT**

[www.pge.com/MyEnergy](http://www.pge.com/MyEnergy)

Account No: 1023456789-0

Statement Date: 01/12/2026

**Due Date: 01/29/2026**

---

**6a Details of Solar Billing Plan Charges**

08/02/2025 to 09/15/2025 (45 billing days)

Service For: 1234 Main Street  
 Service Agreement ID: 9087654321  
 Rate Schedule: AGA1 Ag<35 kW Low Use  
 Enrolled Programs: Solar Billing Plan

**08/02/2025 to 08/31/2025**

<b>Energy Produced</b>			
Peak	254.210000 kWh	@ \$0.26701	\$67.88
Off Peak	1,772.010000 kWh	@ \$0.14733	261.07
Energy Export Credits Applied		@ prices vary	-291.58
<b>Energy Delivered</b>			
Peak	254.210000 kWh	@ \$0.25402	64.57
Off Peak	1,772.010000 kWh	@ \$0.20776	368.15
Energy Export Credits Applied		@ prices vary	-132.07
<b>Other Charges and Credits</b>			
Customer Charge	30 days	@ \$0.68895	20.67
Non-Bypassable Charges	2,026.220000 kWh	@ \$0.03046	61.72
Demand Charge <sup>1</sup>			
Max Demand	3.390000 kW	@ \$12.75000	43.22

**09/01/2025 to 09/15/2025**

<b>Energy Produced</b>			
Peak	148.420000 kWh	@ \$0.26701	\$39.63
Off Peak	1,035.190000 kWh	@ \$0.14733	152.51
Energy Export Credits Applied		@ prices vary	-192.14
<b>Energy Delivered</b>			
Peak	148.420000 kWh	@ \$0.24638	36.57
Off Peak	1,035.190000 kWh	@ \$0.20012	207.16
Energy Export Credits Applied		@ prices vary	-18.36
<b>Other Charges and Credits</b>			
Customer Charge	15 days	@ \$0.68895	10.33
Non-Bypassable Charges	1,183.610000 kWh	@ \$0.03046	36.05
Demand Charge <sup>1</sup>			
Max Demand	3.575600 kW	@ \$12.28000	21.95

**Service Information**

Meter # 1098765432

Imports 3,209.832000 kWh

Exports -3,569.832000 kWh

Serial G

Rotating Outage Block 10A

**Additional Messages**

For more details on Solar Billing Plan visit [www.pge.com/solarbillingplan](http://www.pge.com/solarbillingplan)

Reminder: Monitor your solar system performance levels monthly to maximize savings. Please contact your solar contractor to learn more about the performance monitoring services or if you have concerns over system performance

---

**Solar Billing Plan Charges**

**\$757.33**

**Taxes**

These Taxes will also appear in Your Account Summary

Energy Commission Tax	\$0.97
Oakland Utility Users' Tax	56.80
<b>Total Taxes</b>	<b>\$57.77</b>

<sup>1</sup> Demand charges are prorated for the number of days in each rate period

To see your hourly Energy Export Credit cost and usage details log into My Account at [www.pge.com](http://www.pge.com) and select All Usage and Rates Tasks, and then select Energy Usage Details.

◀ previous page

next page ▶

15

# Monthly energy statement



CLICK THE NUMBER TABS FOR A DETAILED EXPLANATION

7 a

## Energy Export Credit Bank

This is a snapshot of your earned solar energy credits. Under the **Energy Export Credit Bank**, every month you will see your:

- Beginning credit balance
- Credits earned and used in this month's bill period
- Remaining credits for future use

At the end of your 12-month billing period, you'll receive a True-Up Statement that applies all unused eligible credits to offset charges.



## ENERGY STATEMENT

www.pge.com/MyEnergy

Account No: 1023456789-0  
Statement Date: 01/12/2026  
Due Date: 01/29/2026

### Energy Export Credit Details

#### HOW ENERGY EXPORT CREDITS WORK

You may be eligible for up to two types of credits: 1. Energy Produced credits can only offset Energy Produced charges 2. Energy Delivered credits can only offset Energy Delivered charges. Any credits unable to offset your monthly charges will be saved to help offset future bill charges. You can use your Energy Export Credit Bank below to track your monthly credits.

7 a

#### YOUR ENERGY EXPORT CREDIT BANK

	Energy Produced Credits	Energy Delivered Credits	Total Credits
Beginning Balance	\$0.00	\$0.00	\$0.00
Earned This Bill (-1163 kWh)	\$22.76	\$20.32	\$43.08
Applied This Period	-\$22.76	-\$20.32	-\$43.08
Remaining Balance	\$0.00	\$0.00	\$0.00

Any remaining energy export credits will be used to offset applicable charges at True-Up.

7 b

#### Your Energy Export Credits (kWh) Earned This Bill

Solar and Battery Energy Produced	Solar Energy Produced (Estimated or Metered) <sup>1</sup>	Energy Produced Eligible for Energy Export Credits <sup>2</sup>
-1163	-1274	-1163
(A)	(B)	(C) = Max of A and B

Actual Billed Net Usage value may vary slightly due to rounding.

Energy Export Credits are only available for solar energy exported to the grid as required by state law.

<sup>1</sup> Customers with storage less than or equal to 10 kW in size are not required to meter their associated solar system.

<sup>2</sup> Energy Export Credits for Energy Produced are capped after calculating the solar energy your system produced (using estimated or metered data) and sent to the grid.

#### KEY TERMS

- **Energy Produced:** This section of the bill shows charges for energy produced by PG&E, and credits for your extra solar energy produced. If you are a customer of a Community Choice Aggregator (CCA), these charges and credits will be determined by your CCA, not PG&E.
- **Energy Delivered:** This section of the bill shows charges for PG&E energy delivered to your business, and credits for your extra solar energy delivered to PG&E.
- **Energy Export Credits:** Credits for excess energy your solar system produces and sends to the grid. Value of credits will vary by hour, month, and weekday/weekend to reflect the value the power provided at a given time.
- **Non-Bypassable Charges:** Charges all PG&E customers pay to help fund energy efficiency programs available to all customers as well as energy assistance programs for lower income households.



# Monthly energy statement



CLICK THE NUMBER TABS FOR A DETAILED EXPLANATION

7 **b**

## Energy Export Credits (kWh) Earned This Bill

Some customers with solar and storage will see a second chart with details about the total energy exported to the grid during the current month.



### ENERGY STATEMENT

www.pge.com/MyEnergy

Account No: 1023456789-0  
Statement Date: 01/12/2026  
Due Date: 01/29/2026

#### Energy Export Credit Details

##### HOW ENERGY EXPORT CREDITS WORK

You may be eligible for up to two types of credits: 1. Energy Produced credits can only offset Energy Produced charges 2. Energy Delivered credits can only offset Energy Delivered charges. Any credits unable to offset your monthly charges will be saved to help offset future bill charges. You can use your Energy Export Credit Bank below to track your monthly credits.

7 **a**

##### YOUR ENERGY EXPORT CREDIT BANK

	Energy Produced Credits	Energy Delivered Credits	Total Credits
Beginning Balance	\$0.00	\$0.00	\$0.00
Earned This Bill (-1163 kWh)	\$22.76	\$20.32	\$43.08
Applied This Period	-\$22.76	-\$20.32	-\$43.08
Remaining Balance	\$0.00	\$0.00	\$0.00

Any remaining energy export credits will be used to offset applicable charges at True-Up.

7 **b**

##### Your Energy Export Credits (kWh) Earned This Bill

Solar and Battery Energy Produced	Solar Energy Produced (Estimated or Metered) <sup>1</sup>	Energy Produced Eligible for Energy Export Credits <sup>2</sup>
-1163	-1274	-1163

(A)

(B)

(C) = Max of A and B

Actual Billed Net Usage value may vary slightly due to rounding.

Energy Export Credits are only available for solar energy exported to the grid as required by state law.

<sup>1</sup> Customers with storage less than or equal to 10 kW in size are not required to meter their associated solar system.

<sup>2</sup> Energy Export Credits for Energy Produced are capped after calculating the solar energy your system produced (using estimated or metered data) and sent to the grid.

##### KEY TERMS

- **Energy Produced:** This section of the bill shows charges for energy produced by PG&E, and credits for your extra solar energy produced. If you are a customer of a Community Choice Aggregator (CCA), these charges and credits will be determined by your CCA, not PG&E.
- **Energy Delivered:** This section of the bill shows charges for PG&E energy delivered to your business, and credits for your extra solar energy delivered to PG&E.
- **Energy Export Credits:** Credits for excess energy your solar system produces and sends to the grid. Value of credits will vary by hour, month, and weekday/weekend to reflect the value the power provided at a given time.
- **Non-Bypassable Charges:** Charges all PG&E customers pay to help fund energy efficiency programs available to all customers as well as energy assistance programs for lower income households.

# Your new annual PG&E True-Up Statement

At the end of your 12-month\* billing cycle, you will receive a **True-Up Statement** that includes:

Current month's electric charges, gas charges (if any), and energy export credits used to offset charges

An annual summary of:

- Charges for energy used from the grid
- Credits for renewable energy sent to the grid

All accumulated renewable Energy Export Credits that can offset previous or current charges

Other charges and credits, such as the True-Up Credit Adjustment and Net Surplus Compensation (NSC)

Your account summary will show all available credits automatically applied to offset monthly charges. Accumulated solar credits will be applied and you'll start a new 12-month billing period.

See details on the next page.

*\*Due to a variety of factors, some customers' True-Up billing cycles may be less than a year.*



# True-Up Statement



CLICK THE NUMBER TABS FOR A DETAILED EXPLANATION

## 1 Service for

This indicates where your charges were incurred. Some customers receive PG&E service at multiple locations.

**ENERGY STATEMENT**

[www.pge.com/MyEnergy](http://www.pge.com/MyEnergy)

Account No: 1023456789-0

Statement Date: 01/12/2026

**Due Date: 01/29/2026**

**1 Service For:**

AGRICULTURAL BUSINESS CUSTOMER  
1234 MAIN STREET  
ANYTOWN, CA 00000

**5 Questions about your bill?**

Solar Hotline: 1-877-743-4112 M-F 7-6  
General: 1-800-743-5000  
Mon-Fri 7 a.m.- 7 p.m.  
Saturday 8 a.m.- 5 p.m.  
[www.pge.com/MyEnergy](http://www.pge.com/MyEnergy)

**Ways To Pay**

[www.pge.com/waystopay](http://www.pge.com/waystopay)

**Your Enrolled Programs**

Solar Billing Plan

**Your Account Summary**

Amount Due on Previous Statement	\$3,234.31
Payment(s) Received Since Last Statement	0.00
Previous Unpaid Balance	\$3,234.31
Current Electric Monthly Charges	\$812.00
Total Solar Billing Plan True-Up Adjustment	17.20
Taxes	63.09
<b>Total Amount Due by 01/29/2026</b>	<b>\$4,126.60</b>

**Your Solar Billing Plan Summary: True-Up**

This is your True-Up bill. Any remaining energy export credits, after offsetting applicable charges, will rollover for use in the new 12-month PG&E bill period. See the "Solar Billing Plan True-Up" page for more details.

**Total Solar Billing Plan True-Up Adjustment** **\$17.20**

**Solar Billing Plan Highlights (09/16/2025 - 10/15/2025)**

Energy you sent to the grid	-2845 kWh
Credits you earned this bill period	\$351.94

- To view charges and credits for this bill period see "Details of Solar Billing Plan Charges" page.

◀ previous page | next page ▶ 19

# True-Up Statement



CLICK THE NUMBER TABS FOR A DETAILED EXPLANATION

## 2 Account Summary: A True-Up Adjustment Charge

This example shows a **Total True-Up Adjustment amount owed**. You'll see:

- Previous amount due
- Payment received
- Current electric charges
- Total Solar Billing Plan True-Up Adjustment
- Total Amount Due

**ENERGY STATEMENT**

[www.pge.com/MyEnergy](http://www.pge.com/MyEnergy)

Account No: 1023456789-0

Statement Date: 01/12/2026

**Due Date: 01/29/2026**

**1 Service For:**

AGRICULTURAL BUSINESS CUSTOMER  
1234 MAIN STREET  
ANYTOWN, CA 00000

**5 Questions about your bill?**

Solar Hotline: 1-877-743-4112 M-F 7-6  
General: 1-800-743-5000  
Mon-Fri 7 a.m. - 7 p.m.  
Saturday 8 a.m. - 5 p.m.  
[www.pge.com/MyEnergy](http://www.pge.com/MyEnergy)

**Ways To Pay**

[www.pge.com/waystopay](http://www.pge.com/waystopay)

**Your Enrolled Programs**

Solar Billing Plan

**Your Account Summary**

Amount Due on Previous Statement	\$3,234.31
Payment(s) Received Since Last Statement	0.00
Previous Unpaid Balance	\$3,234.31
Current Electric Monthly Charges	\$812.00
Total Solar Billing Plan True-Up Adjustment	17.20
Taxes	63.09
<b>Total Amount Due by 01/29/2026</b>	<b>\$4,126.60</b>

**Your Solar Billing Plan Summary: True-Up**

This is your True-Up bill. Any remaining energy export credits, after offsetting applicable charges, will rollover for use in the new 12-month PG&E bill period. See the "Solar Billing Plan True-Up" page for more details.

**Total Solar Billing Plan True-Up Adjustment** **\$17.20**

**Solar Billing Plan Highlights (09/16/2025 - 10/15/2025)**

Energy you sent to the grid	-2845 kWh
Credits you earned this bill period	\$351.94

- To view charges and credits for this bill period see "Details of Solar Billing Plan Charges" page.

◀ previous page | next page ▶

20

# True-Up Statement



CLICK THE NUMBER TABS FOR  
A DETAILED EXPLANATION

## 3 Solar Billing Plan highlights

This summary explains how much energy you sent to the grid and credits earned in this current bill period.

**ENERGY STATEMENT**

[www.pge.com/MyEnergy](http://www.pge.com/MyEnergy)

Account No: 1023456789-0

Statement Date: 01/12/2026

**Due Date: 01/29/2026**

**1 Service For:**

AGRICULTURAL BUSINESS CUSTOMER  
1234 MAIN STREET  
ANYTOWN, CA 00000

**5 Questions about your bill?**

Solar Hotline: 1-877-743-4112 M-F 7-6  
General: 1-800-743-5000  
Mon-Fri 7 a.m.- 7 p.m.  
Saturday 8 a.m.- 5 p.m.  
[www.pge.com/MyEnergy](http://www.pge.com/MyEnergy)

**Ways To Pay**

[www.pge.com/waystopay](http://www.pge.com/waystopay)

**Your Enrolled Programs**

Solar Billing Plan

**Your Account Summary**

Amount Due on Previous Statement	\$3,234.31
Payment(s) Received Since Last Statement	0.00
Previous Unpaid Balance	\$3,234.31
Current Electric Monthly Charges	\$812.00
Total Solar Billing Plan True-Up Adjustment	17.20
Taxes	63.09
<b>Total Amount Due by 01/29/2026</b>	<b>\$4,126.60</b>

**Your Solar Billing Plan Summary: True-Up**

This is your True-Up bill. Any remaining energy export credits, after offsetting applicable charges, will rollover for use in the new 12-month PG&E bill period. See the "Solar Billing Plan True-Up" page for more details.

**Total Solar Billing Plan True-Up Adjustment** **\$17.20**

**Solar Billing Plan Highlights (09/16/2025 - 10/15/2025)**

Energy you sent to the grid	-2845 kWh
Credits you earned this bill period	\$351.94

- To view charges and credits for this bill period see "Details of Solar Billing Plan Charges" page.

◀ previous page | next page ▶

21

# True-Up Statement



CLICK THE NUMBER TABS FOR A DETAILED EXPLANATION

## 4 At-a-glance account data

Your account number and due date are at the top of every page. It is good to have this information handy if you need to call us.

**ENERGY STATEMENT**

[www.pge.com/MyEnergy](http://www.pge.com/MyEnergy)

Account No: 1023456789-0

Statement Date: 01/12/2026

**Due Date: 01/29/2026**

**1 Service For:**

AGRICULTURAL BUSINESS CUSTOMER  
1234 MAIN STREET  
ANYTOWN, CA 00000

**5 Questions about your bill?**

Solar Hotline: 1-877-743-4112 M-F 7-6  
General: 1-800-743-5000  
Mon-Fri 7 a.m.- 7 p.m.  
Saturday 8 a.m.- 5 p.m.  
[www.pge.com/MyEnergy](http://www.pge.com/MyEnergy)

**Ways To Pay**

[www.pge.com/waystopay](http://www.pge.com/waystopay)

**Your Enrolled Programs**

Solar Billing Plan

**Your Account Summary**

Amount Due on Previous Statement	\$3,234.31
Payment(s) Received Since Last Statement	0.00
Previous Unpaid Balance	\$3,234.31
Current Electric Monthly Charges	\$812.00
Total Solar Billing Plan True-Up Adjustment	17.20
Taxes	63.09
<b>Total Amount Due by 01/29/2026</b>	<b>\$4,126.60</b>

**Your Solar Billing Plan Summary: True-Up**

This is your True-Up bill. Any remaining energy export credits, after offsetting applicable charges, will rollover for use in the new 12-month PG&E bill period. See the "Solar Billing Plan True-Up" page for more details.

**Total Solar Billing Plan True-Up Adjustment** **\$17.20**

**Solar Billing Plan Highlights (09/16/2025 - 10/15/2025)**

Energy you sent to the grid	-2845 kWh
Credits you earned this bill period	\$351.94

- To view charges and credits for this bill period see "Details of Solar Billing Plan Charges" page.

◀ previous page | next page ▶

22

# True-Up Statement



CLICK THE NUMBER TABS FOR A DETAILED EXPLANATION

## 5 Questions about your bill?

If you have any questions, feel free to contact us using the dedicated Solar Hotline found here.

**ENERGY STATEMENT**

[www.pge.com/MyEnergy](http://www.pge.com/MyEnergy)

Account No: 1023456789-0

Statement Date: 01/12/2026

**Due Date: 01/29/2026**

**1 Service For:**

AGRICULTURAL BUSINESS CUSTOMER  
1234 MAIN STREET  
ANYTOWN, CA 00000

**5 Questions about your bill?**

Solar Hotline: 1-877-743-4112 M-F 7-6  
General: 1-800-743-5000  
Mon-Fri 7 a.m.- 7 p.m.  
Saturday 8 a.m.- 5 p.m.  
[www.pge.com/MyEnergy](http://www.pge.com/MyEnergy)

**Ways To Pay**

[www.pge.com/waystopay](http://www.pge.com/waystopay)

**Your Enrolled Programs**

Solar Billing Plan

**Your Account Summary**

Amount Due on Previous Statement	\$3,234.31
Payment(s) Received Since Last Statement	0.00
Previous Unpaid Balance	\$3,234.31
Current Electric Monthly Charges	\$812.00
Total Solar Billing Plan True-Up Adjustment	17.20
Taxes	63.09
<b>Total Amount Due by 01/29/2026</b>	<b>\$4,126.60</b>

**Your Solar Billing Plan Summary: True-Up**

This is your True-Up bill. Any remaining energy export credits, after offsetting applicable charges, will rollover for use in the new 12-month PG&E bill period. See the "Solar Billing Plan True-Up" page for more details.

**Total Solar Billing Plan True-Up Adjustment** **\$17.20**

**Solar Billing Plan Highlights (09/16/2025 - 10/15/2025)**

Energy you sent to the grid	-2845 kWh
Credits you earned this bill period	\$351.94

- To view charges and credits for this bill period see "Details of Solar Billing Plan Charges" page.

◀ previous page | next page ▶

23

# True-Up Statement



CLICK THE NUMBER TABS FOR A DETAILED EXPLANATION



## Account Summary: With a True-Up Adjustment Credit

This example shows an **annual Total True-Up Adjustment** with a credit.



### ENERGY STATEMENT

[www.pge.com/MyEnergy](http://www.pge.com/MyEnergy)

Account No: 1023456789-0  
Statement Date: 01/12/2026  
Due Date: 01/29/2026

#### Service For:

Commercial Business  
1234 MAIN STREET  
ANYTOWN, CA 00000

#### Questions about your bill?

Solar Hotline: 1-877-743-4112 M-F 7-6  
General: 1-800-743-5000  
Mon-Fri 7 a.m.- 7 p.m.  
Saturday 8 a.m.- 5 p.m.  
[www.pge.com/MyEnergy](http://www.pge.com/MyEnergy)

#### Ways To Pay

[www.pge.com/waystopay](http://www.pge.com/waystopay)

#### Your Enrolled Programs

Solar Billing Plan

#### Your Account Summary

Amount Due on Previous Statement	\$15,943.38
Payment(s) Received Since Last Statement	0.00
Previous Unpaid Balance	\$15,943.38
Current Electric Monthly Charges	\$3,022.00
Total Solar Billing Plan True-Up Adjustment	-0.20
Taxes	228.36

**Total Amount Due by 01/02/2026 \$19,193.54**

#### Your Solar Billing Plan Summary: True-Up

This is your True-Up bill. Any remaining energy export credits, after offsetting applicable charges, will rollover for use in the new 12-month PG&E bill period. See the "Solar Billing Plan True-Up" page for more details.

**Total Solar Billing Plan True-Up Adjustment - \$0.20**

#### Solar Billing Plan Highlights (07/02/2025 - 08/01/2025)

Energy you sent to the grid	-733 kWh
Credits you earned this bill period	\$32.65

- To view charges and credits for this bill period see "Details of Solar Billing Plan Charges" page.



# True-Up Statement



CLICK THE NUMBER TABS FOR A DETAILED EXPLANATION

## 7 a Details of Solar Billing Plan Charges

This section shows:

- **Energy Produced**
  - Charges for electricity provided from the grid to your property based on the [Time-of-Use rate plan](#) for your business
  - Credits for renewable energy produced and sent to the grid
- **Energy Delivered**
  - Charges for electricity delivered from the grid to your property
  - Credits for renewable energy delivered to the grid
- **Other Charges** including Customer Charge, Non-bypassable Charges, and Demand Charge, if applicable.

ENERGY STATEMENT		Account No: 1023456789-0
www.pge.com/MyEnergy		Statement Date: 01/12/2026
		Due Date: 01/29/2026
<b>7 a Details of Solar Billing Plan Charges</b>		
09/16/2025 to 10/15/2025 (30 billing days)		
Service For: 1234 Main Street		
Service Agreement ID: 9087654321		
Rate Schedule: AGA1 Ag<35 kW Low Use		
Enrolled Programs: Solar Billing Plan		
<b>09/16/2025 to 09/30/2025</b>		
<b>Energy Produced</b>		
Peak	174.340000 kWh @ \$0.26701	\$46.55
Off Peak	1,216.630000 kWh @ \$0.14733	179.25
Energy Export Credits Applied	@ prices vary	-225.80
<b>Energy Delivered</b>		
Peak	174.340000 kWh @ \$0.24638	42.95
Off Peak	1,216.630000 kWh @ \$0.20012	243.47
Energy Export Credits Applied	@ prices vary	-22.43
<b>Other Charges and Credits</b>		
Customer Charge	15 days @ \$0.68895	10.33
Non-Bypassable Charges	1,390.970000 kWh @ \$0.03046	42.37
Demand Charge <sup>1</sup>		
Max Demand	4.151600 kW @ \$12.28000	25.49
<b>10/01/2025 to 10/15/2025</b>		
<b>Energy Produced</b>		
Peak	200.260000 kWh @ \$0.14401	\$28.84
Off Peak	1,398.070000 kWh @ \$0.11756	164.36
Energy Export Credits Applied	@ prices vary	-82.10
<b>Energy Delivered</b>		
Peak	200.260000 kWh @ \$0.19307	38.66
Off Peak	1,398.070000 kWh @ \$0.19023	265.95
Energy Export Credits Applied	@ prices vary	-33.94
<b>Other Charges and Credits</b>		
Customer Charge	15 days @ \$0.68895	10.33
Non-Bypassable Charges	1,598.330000 kWh @ \$0.03046	48.69
Demand Charge <sup>1</sup>		
Max Demand	4.727600 kW @ \$12.28000	29.03
<b>7 b Solar Billing Plan Charges</b>		<b>\$812.00</b>
<b>Taxes</b>		
These Taxes will also appear in Your Account Summary		
Energy Commission Tax		\$0.90
Oakland Utility Users' Tax		62.19
<b>Total Taxes</b>		<b>\$63.09</b>
<sup>1</sup> Demand charges are prorated for the number of days in each rate period		
To see your hourly Energy Export Credit cost and usage details log into My Account at <a href="#">www.pge.com</a> and select All Usage and Rates Tasks, and then select Energy Usage Details.		

### Service Information

Meter # 1098765432  
Imports 2,989,296000 kWh  
Exports -2,845,296000 kWh  
Serial G  
Rotating Outage Block 10A

### Additional Messages

For more details on Solar Billing Plan visit [www.pge.com/solarbillingplan](#)

Reminder: Monitor your solar system performance levels monthly to maximize savings. Please contact your solar contractor to learn more about the performance monitoring services or if you have concerns over system performance

# True-Up Statement



CLICK THE NUMBER TABS FOR A DETAILED EXPLANATION



## 7b Details of Solar Billing Plan Charges

**Demand Charge** is calculated using the 15-minute interval in each billing month when your business uses the most electricity.

Save when you can lower your highest usage 15-minute interval.



### 7a Details of Solar Billing Plan Charges

09/16/2025 to 10/15/2025 (30 billing days)

Service For: 1234 Main Street  
 Service Agreement ID: 9087654321  
 Rate Schedule: AGA1 Ag<35 kW Low Use  
 Enrolled Programs: Solar Billing Plan

#### 09/16/2025 to 09/30/2025

Energy Produced			
Peak	174.340000	kWh @ \$0.26701	\$46.55
Off Peak	1,216.630000	kWh @ \$0.14733	179.25
Energy Export Credits Applied		@ prices vary	-225.80
Energy Delivered			
Peak	174.340000	kWh @ \$0.24638	42.95
Off Peak	1,216.630000	kWh @ \$0.20012	243.47
Energy Export Credits Applied		@ prices vary	-22.43
Other Charges and Credits			
Customer Charge	15	days @ \$0.68895	10.33
Non-Bypassable Charges	1,390.970000	kWh @ \$0.03046	42.37
Demand Charge <sup>1</sup>			
Max Demand	4.151600	kW @ \$12.28000	25.49

#### 10/01/2025 to 10/15/2025

Energy Produced			
Peak	200.260000	kWh @ \$0.14401	\$28.84
Off Peak	1,398.070000	kWh @ \$0.11756	164.36
Energy Export Credits Applied		@ prices vary	-82.10
Energy Delivered			
Peak	200.260000	kWh @ \$0.19307	38.66
Off Peak	1,398.070000	kWh @ \$0.19023	265.95
Energy Export Credits Applied		@ prices vary	-33.94
Other Charges and Credits			
Customer Charge	15	days @ \$0.68895	10.33
Non-Bypassable Charges	1,598.330000	kWh @ \$0.03046	48.69
Demand Charge <sup>1</sup>			
Max Demand	4.727600	kW @ \$12.28000	29.03



### 7b Solar Billing Plan Charges **\$812.00**

#### Taxes

These Taxes will also appear in Your Account Summary

Energy Commission Tax	\$0.90
Oakland Utility Users' Tax	62.19

**Total Taxes \$63.09**

<sup>1</sup> Demand charges are prorated for the number of days in each rate period

To see your hourly Energy Export Credit cost and usage details log into My Account at [www.pge.com](http://www.pge.com) and select All Usage and Rates Tasks, and then select Energy Usage Details.

Account No: 1023456789-0  
 Statement Date: 01/12/2026  
 Due Date: 01/29/2026

#### Service Information

Meter # 1098765432  
 Imports 2,989,296000 kWh  
 Exports -2,845,296000 kWh  
 Serial G  
 Rotating Outage Block 10A

#### Additional Messages

For more details on Solar Billing Plan visit [www.pge.com/solarbillingplan](http://www.pge.com/solarbillingplan)

Reminder: Monitor your solar system performance levels monthly to maximize savings. Please contact your solar contractor to learn more about the performance monitoring services or if you have concerns over system performance



# True-Up Statement



CLICK THE NUMBER TABS FOR A DETAILED EXPLANATION

## 8 a Energy Export Credit Bank

This is a snapshot of your renewable energy credits earned during your 12-month billing cycle,\* including your beginning credit balance, amount of credits used during the current bill period and any remaining credits (if applicable).

*\*Due to a variety of factors, some customers' True-Up billing cycles may be less than a year.*

## 8 b Energy Export Credits Earned This Bill

Some customers with solar and storage will see a chart with details about the energy exported to the grid for the current bill period.



### ENERGY STATEMENT

www.pge.com/MyEnergy

Account No: 1023456789-0  
Statement Date: 01/12/2026  
Due Date: 01/29/2026

#### Energy Export Credit Details

##### HOW ENERGY EXPORT CREDITS WORK

You may be eligible for up to two types of credits: 1. Energy Produced credits can only offset Energy Produced charges 2. Energy Delivered credits can only offset Energy Delivered charges. Any credits unable to offset your monthly charges will be saved to help offset future bill charges. You can use your Energy Export Credit Bank below to track your monthly credits.

8 a

##### YOUR ENERGY EXPORT CREDIT BANK

	Energy Produced Credits	Energy Delivered Credits	Total Credits
Beginning Balance	\$0.00	\$0.00	\$0.00
Earned This Bill (-1163 kWh)	\$22.76	\$20.32	\$43.08
Applied This Period	-\$22.76	-\$20.32	-\$43.08
Remaining Balance	\$0.00	\$0.00	\$0.00

Any remaining energy export credits will be used to offset applicable charges at True-Up.

8 b

##### Your Energy Export Credits (kWh) Earned This Bill

Solar and Battery Energy Produced	Solar Energy Produced (Estimated or Metered) <sup>1</sup>	Energy Produced Eligible for Energy Export Credits <sup>2</sup>
-1163	-1274	-1163
(A)	(B)	(C) = Max of A and B

Actual Billed Net Usage value may vary slightly due to rounding.

Energy Export Credits are only available for solar energy exported to the grid as required by state law.

<sup>1</sup> Customers with storage less than or equal to 10 kW in size are not required to meter their associated solar system.

<sup>2</sup> Energy Export Credits for Energy Produced are capped after calculating the solar energy your system produced (using estimated or metered data) and sent to the grid.

##### KEY TERMS

- Energy Produced:** This section of the bill shows charges for energy produced by PG&E, and credits for your extra solar energy produced. If you are a customer of a Community Choice Aggregator (CCA), these charges and credits will be determined by your CCA, not PG&E.
- Energy Delivered:** This section of the bill shows charges for PG&E energy delivered to your business, and credits for your extra solar energy delivered to PG&E.
- Energy Export Credits:** Credits for excess energy your solar system produces and sends to the grid. Value of credits will vary by hour, month, and weekday/weekend to reflect the value the power provided at a given time.
- Non-Bypassable Charges:** Charges all PG&E customers pay to help fund energy efficiency programs available to all customers as well as energy assistance programs for lower income households.



# True-Up Statement



CLICK THE NUMBER TABS FOR A DETAILED EXPLANATION

## 8 a Energy Export Credit Bank

This is a snapshot of your renewable energy credits earned during your 12-month billing cycle,\* including your beginning credit balance, amount of credits used during the current bill period and any remaining credits (if applicable).

*\*Due to a variety of factors, some customers' True-Up billing cycles may be less than a year.*

## 8 b Energy Export Credits Earned This Bill

Some customers with solar and storage will see a chart with details about the energy exported to the grid for the current bill period.



### ENERGY STATEMENT

www.pge.com/MyEnergy

Account No: 1023456789-0

Statement Date: 01/12/2026

Due Date: 01/29/2026

#### Energy Export Credit Details

##### HOW ENERGY EXPORT CREDITS WORK

You may be eligible for up to two types of credits: 1. Energy Produced credits can only offset Energy Produced charges 2. Energy Delivered credits can only offset Energy Delivered charges. Any credits unable to offset your monthly charges will be saved to help offset future bill charges. You can use your Energy Export Credit Bank below to track your monthly credits.

8 a

##### YOUR ENERGY EXPORT CREDIT BANK

	Energy Produced Credits	Energy Delivered Credits	Total Credits
Beginning Balance	\$0.00	\$0.00	\$0.00
Earned This Bill (-1163 kWh)	\$22.76	\$20.32	\$43.08
Applied This Period	-\$22.76	-\$20.32	-\$43.08
Remaining Balance	\$0.00	\$0.00	\$0.00

Any remaining energy export credits will be used to offset applicable charges at True-Up.

8 b

##### Your Energy Export Credits (kWh) Earned This Bill

Solar and Battery Energy Produced	Solar Energy Produced (Estimated or Metered) <sup>1</sup>	Energy Produced Eligible for Energy Export Credits <sup>2</sup>
-1163	-1274	-1163
(A)	(B)	(C) = Max of A and B

Actual Billed Net Usage value may vary slightly due to rounding.

Energy Export Credits are only available for solar energy exported to the grid as required by state law.

<sup>1</sup> Customers with storage less than or equal to 10 kW in size are not required to meter their associated solar system.

<sup>2</sup> Energy Export Credits for Energy Produced are capped after calculating the solar energy your system produced (using estimated or metered data) and sent to the grid.

##### KEY TERMS

- **Energy Produced:** This section of the bill shows charges for energy produced by PG&E, and credits for your extra solar energy produced. If you are a customer of a Community Choice Aggregator (CCA), these charges and credits will be determined by your CCA, not PG&E.
- **Energy Delivered:** This section of the bill shows charges for PG&E energy delivered to your business, and credits for your extra solar energy delivered to PG&E.
- **Energy Export Credits:** Credits for excess energy your solar system produces and sends to the grid. Value of credits will vary by hour, month, and weekday/weekend to reflect the value the power provided at a given time.
- **Non-Bypassable Charges:** Charges all PG&E customers pay to help fund energy efficiency programs available to all customers as well as energy assistance programs for lower income households.



# True-Up Statement



CLICK THE NUMBER TABS FOR A DETAILED EXPLANATION

## 9 True-Up Period (with a credit adjustment)

In this True-Up Period section, you'll see a summary of the 12-month billing cycle:

- Net Usage
- Energy Produced credits, charges, and True-Up Credit Adjustments
- Energy Delivered credits, charges, and True-Up Credit Adjustments
- Net Surplus Compensation Credit

Since you pay charges and earn credits throughout the year (left column), this annual statement provides an opportunity for credits to be applied to any charges (right column) you may have paid before earning credits for excess renewable energy. If you have more credits after offsetting charges, you'll see a True-Up Adjustment credit balance.



### ENERGY STATEMENT

www.pge.com/MyEnergy

Account No: 1023456789-0  
 Statement Date: 01/12/2026  
 Due Date: 01/29/2026

#### Solar Billing Plan True-Up

Service For: 1234 Main Street  
 Service Agreement ID: 1234567890  
 Rate Schedule: B19P Bus Med-High Use  
 Enrolled Programs: Solar Billing Plan

#### Items to Note on Energy Export Credits:

- Energy Produced credits can only offset Energy Produced charges.
- Energy Delivered credits can only offset Energy Delivered charges.
- Any banked credits will be applied within their respective category at True-Up.
- Any remaining energy export credits will rollover for use in the new 12-month PG&E bill period.

#### Net Surplus Compensation:

- Net Surplus Compensation is how energy service providers may credit customers for energy produced in excess of what they received from the grid over the True-Up period.
- A True-Up Credit Adjustment – charged at the average Energy Export Credit rate – will be applied to account for any monthly Energy Export Credits already given for the same excess energy throughout the True-Up period.
- Any Banked Energy Produced or Energy Delivered credits will be applied to offset the annual True-Up Credit Adjustment.

#### True-Up Period (07/01/2025 - 08/01/2025)

##### Usage Summary

Total Imports (kWh)	1,483.872420
Total Exports (kWh)	-2,176.346110
<b>Net Usage</b>	<b>-692.473700</b>

##### Energy Produced True-Up

Remaining Credits in Bank	\$0.00
Charges Paid this True-Up Period	151.36
Credits Used This True-Up Period	-47.16
True-Up Credit Adjustment	-692.473700 kWh @ -\$0.03011
	20.85
<b>Energy Produced True-Up Adjustment</b>	<b>20.85</b>

##### Energy Delivered True-Up

Remaining Credits in Bank	42.56
Charges Paid this True-Up Period	-4.37
True-Up Credit Adjustment <sup>1</sup>	-692.473700 kWh @ -\$0.00980
Banked Energy Delivered Credits Applied	-6.79
<b>Energy Delivered True-Up Adjustment</b>	<b>0.00</b>

Net Surplus Compensation Credit <sup>1</sup>	-692.473700 kWh @ \$0.03040	-21.05
--	-----------------------------	--------

**Total Solar Billing Plan True-Up Adjustment** **-\$0.20**



# True-Up Statement



CLICK THE NUMBER TABS FOR A DETAILED EXPLANATION

## 10 True-Up Period (with a charge adjustment)

In this section, you'll see a summary of the 12-month billing cycle:

- Net Usage
- Energy Produced credits, charges, and True-Up Credit Adjustments after applying credits to paid charges
- Energy Delivered credits, charges, and True-Up Credit Adjustments after applying credits to paid charges
- Net Surplus Compensation Credit

NSC is given if you sent more energy than you received from the grid over the past 12 months. You received credits for this excess energy during the 12 months. These credits will be recalculated using NSC credit value, which may be lower. This will result in returning a portion of the credits given during the 12 months, which will show as a True-Up Adjustment charge.



### ENERGY STATEMENT

www.pge.com/MyEnergy

Account No: 1023456789-0  
 Statement Date: 01/12/2026  
 Due Date: 01/29/2026

#### Solar Billing Plan True-Up

Service For: 1234 Main Street  
 Service Agreement ID: 9087654321  
 Rate Schedule: B1 Bus Low Use  
 Enrolled Programs: Solar Billing Plan

#### Items to Note on Energy Export Credits:

- Energy Produced credits can only offset Energy Produced charges.
- Energy Delivered credits can only offset Energy Delivered charges.
- Any banked credits will be applied within their respective category at True-Up.
- Any remaining energy export credits will rollover for use in the new 12-month PG&E bill period.

#### Net Surplus Compensation:

- Net Surplus Compensation is how energy service providers may credit customers for energy produced in excess of what they received from the grid over the True-Up period.
- A True-Up Credit Adjustment – charged at the average Energy Export Credit rate – will be applied to account for any monthly Energy Export Credits already given for the same excess energy throughout the True-Up period.
- Any Banked Energy Produced or Energy Delivered credits will be applied to offset the annual True-Up Credit Adjustment.

#### True-Up Period (03/15/2025 - 06/15/2025)

##### Usage Summary

Total Imports (kWh)	2,174.497310
Total Exports (kWh)	-3,080.485250
<b>Net Usage</b>	<b>-905.987940</b>

##### Energy Produced True-Up

Remaining Credits in Bank	\$0.00
Charges Paid this True-Up Period	314.18
Credits Used This True-Up Period	-26.85
True-Up Credit Adjustment	50.91
	<b>50.91</b>

##### Energy Produced True-Up Adjustment

##### Energy Delivered True-Up

Remaining Credits in Bank	0.00
Charges Paid this True-Up Period	545.15
Credits Used This True-Up Period	-22.49
True-Up Credit Adjustment	6.91
	<b>6.91</b>

##### Energy Delivered True-Up Adjustment

Net Surplus Compensation Credit	-905.987940 kWh @ \$0.02965	<b>-26.86</b>
---------------------------------	-----------------------------	---------------

**Total Solar Billing Plan True-Up Adjustment \$30.96**

10



\*Each CCA sets its own NSC rate. Contact your CCA for more information.

# Get the most out of your PG&E online account

The best way to stay informed about your energy charges and track your credits is to establish an online account. You can easily monitor your energy use and the seasonal impacts on your energy production. This helps you maximize your savings potential.

## [Access your online account](#)

You will need your PG&E account number (located on your monthly energy statement) and a valid email address.



### Savings Tip:

Look for times to use excess renewable energy for your business to minimize using energy from the grid.

**Account** [Add an Account](#)

5354491488-9

**Payments** All payments tasks

**Billing** All billing tasks

**Current Balance**

**\$0.00**

Due: 3/5/2026

Your bills are up to date.

Bill Mastercard is set to automatically pay your bill

Last bill paid: 3/5/2026

**Pay Now**

**Need More Time To Pay**

[View Current Bill](#)

**Billing insights**

**See bill insights from your latest bill**

[View Bill Insights](#)

**Assistance programs**

- [CARE/FERA](#) ✗ Not enrolled
- [Budget Billing](#) ✗ Not enrolled
- [Medical Baseline](#) ✗ Not enrolled

[See More Ways to Save](#)

Tools may not be available to some solar customers enrolled in certain solar programs.

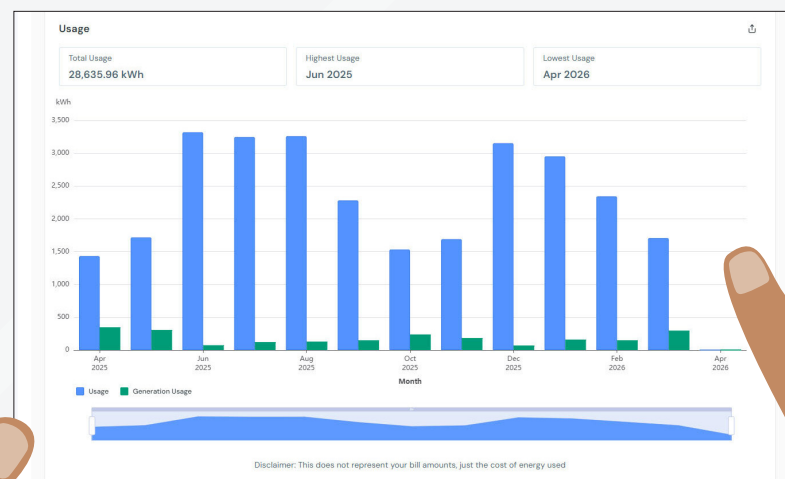


# Information available online

Visit your [online account](#)  
for the following:

- > See your monthly energy usage and how weather impacts it
- > Energy usage, rates & savings
- > Ensure renewable energy system operation
- > Instant access to bills
- > Enhanced energy information

See your monthly energy usage and how weather impacts it



# Information available online

Visit your **online account**  
for the following:

- > See your monthly energy usage and how weather impacts it
- > Energy usage, rates & savings
- > Ensure renewable energy system operation
- > Instant access to bills
- > Enhanced energy information



**Savings Tip:**  
Look for times to  
use excess renewable  
energy for your  
business.

## Energy usage, rates & savings

Monitor how much energy your business consumes on a daily, monthly and yearly basis to help you understand your energy needs and plan for future usage.

View your monthly energy use by the hour or day to determine:

1. How you earn credits for excess energy sent to the grid
2. How you are charged for energy provided from the grid

# Information available online

Visit your **online account**  
for the following:

- > **See your monthly energy usage and how weather impacts it**
- > **Energy usage, rates & savings**
- > **Ensure renewable energy system operation**
- > **Instant access to bills**
- > **Enhanced energy information**

## Ensure renewable energy system operation

Technology can sometimes fail. Monitoring your monthly energy usage, charges and credits can alert you to an unexpected change in renewable energy production. Detecting issues early will help you get the most out of your investment.

Contact your contractor if you discover that your system isn't generating credits.

# Information available online

Visit your **online account**  
for the following:

- > See your monthly energy usage and how weather impacts it
- > Energy usage, rates & savings
- > Ensure renewable energy system operation
- > Instant access to bills
- > Enhanced energy information

## Instant access to bills

View and download your monthly Energy Statement online. Plus, you can download your energy usage in a spreadsheet, identify trends and find out when to shift energy usage to maximize your renewable energy savings.

# Information available online

Visit your **online account**  
for the following:

- > See your monthly energy usage and how weather impacts it
- > Energy usage, rates & savings
- > Ensure renewable energy system operation
- > Instant access to bills
- > Enhanced energy information

## Enhanced energy information

Get a high-level overview of your monthly and cumulative energy usage, charges and credits and see year-over-year comparisons for a better understanding of your True-Up Statement.

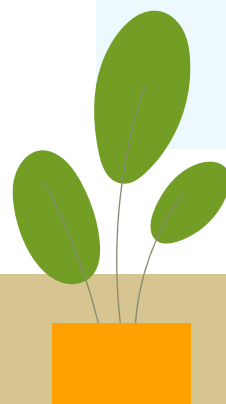
# Frequently asked questions

Click questions for fast answers

- > [Can I access my charges and credits online?](#)
- > [Why is it important to know how much energy my system produced or used?](#)
- > [Under the Solar Billing Plan: How will I be charged for electricity provided from the grid?](#)
- > [Under the Solar Billing Plan: How are credits for solar energy sent to the grid determined?](#)
- > [Why are there True-Up adjustments on the True-Up statement?](#)

## Can I access my charges and credits online?

Yes. Make sure you set up an online account at [pge.com](http://pge.com) for easy access to your Monthly Energy Statement and True-Up Statement. You can also review your monthly usage and pay your PG&E bill.



# Frequently asked questions

Click questions for fast answers

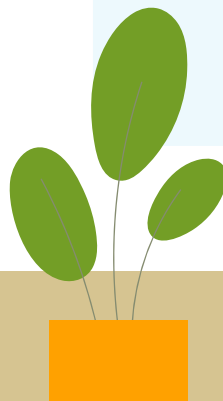
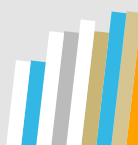
- > [Can I access my charges and credits online?](#)
- > [Why is it important to know how much energy my system produced or used?](#)
- > [Under the Solar Billing Plan: How will I be charged for electricity provided from the grid?](#)
- > [Under the Solar Billing Plan: How are credits for solar energy sent to the grid determined?](#)
- > [Why are there True-Up adjustments on the True-Up statement?](#)

## Why is it important to know how much energy my system produced or used?

Comparing how much your renewable energy system provides and how much your business uses can help you identify and maximize savings opportunities.

You may benefit from shifting your energy use or by exploring ways to make your business more energy efficient.

Your contractor should have performance monitoring services and can help you understand how much your renewable energy system generates. View your energy usage by time period through your PG&E online account.



# Frequently asked questions

Click questions for fast answers

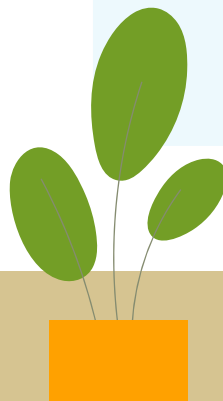
- > [Can I access my charges and credits online?](#)
- > [Why is it important to know how much energy my system produced or used?](#)
- > [Under the Solar Billing Plan: How will I be charged for electricity provided from the grid?](#)
- > [Under the Solar Billing Plan: How are credits for solar energy sent to the grid determined?](#)
- > [Why are there True-Up adjustments on the True-Up statement?](#)

## Under the Solar Billing Plan: How will I be charged for electricity provided from the grid?

At night, or on cloudy days, or anytime when you are using more energy than your renewable energy system is producing, you will use energy from the grid.

The energy your business uses will be charged based on the Time-of-Use plan.

Get more information about Agriculture or Commercial business Time-of-Use rate plans.



# Frequently asked questions

Click questions for fast answers

- > [Can I access my charges and credits online?](#)
- > [Why is it important to know how much energy my system produced or used?](#)
- > [Under the Solar Billing Plan: How will I be charged for electricity provided from the grid?](#)
- > [Under the Solar Billing Plan: How are credits for solar energy sent to the grid determined?](#)
- > [Why are there True-Up adjustments on the True-Up statement?](#)

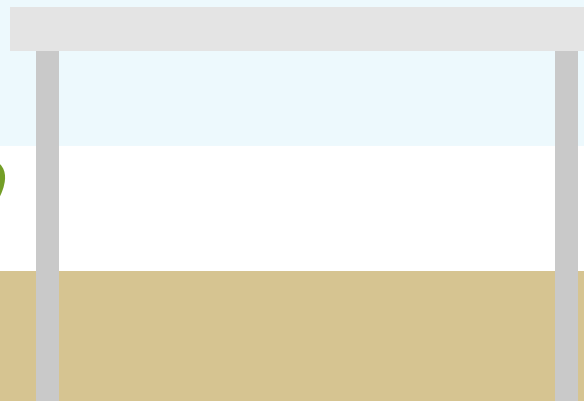
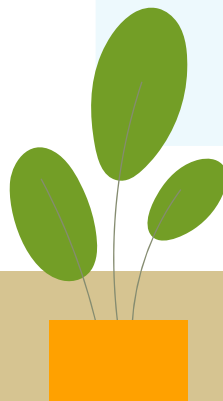
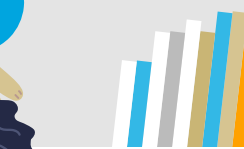
## Under the Solar Billing Plan: How are credits for renewable energy sent to the grid determined?

You receive credits for excess renewable energy sent to the grid. The Energy Export Credit reflects the value of the energy at the time of export. Energy values vary by hour, day, and month.

The credit values are determined through a public proceeding managed by the CPUC.\*

[Click here](#) for a complete list of credit values.

\*For Community Choice Aggregation (CCA) customers and Direct Access providers, check with your provider for generation export values.



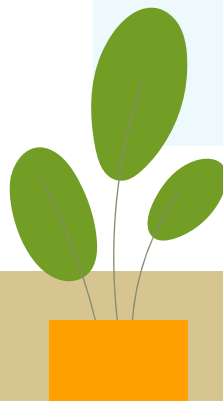
# Frequently asked questions

Click questions for fast answers

- > [Can I access my charges and credits online?](#)
- > [Why is it important to know how much energy my system produced or used?](#)
- > [Under the Solar Billing Plan: How will I be charged for electricity provided from the grid?](#)
- > [Under the Solar Billing Plan: How are credits for solar energy sent to the grid determined?](#)
- > [Why are there True-Up adjustments on the True-Up statement?](#)

## Why are there True-Up adjustments on the True-Up statement?

After applying remaining credits to charges already paid during the 12-month billing cycle and, if applicable, recalculating credits for excess energy eligible for NSC credits, the True-Up adjustments show the results after these calculations.



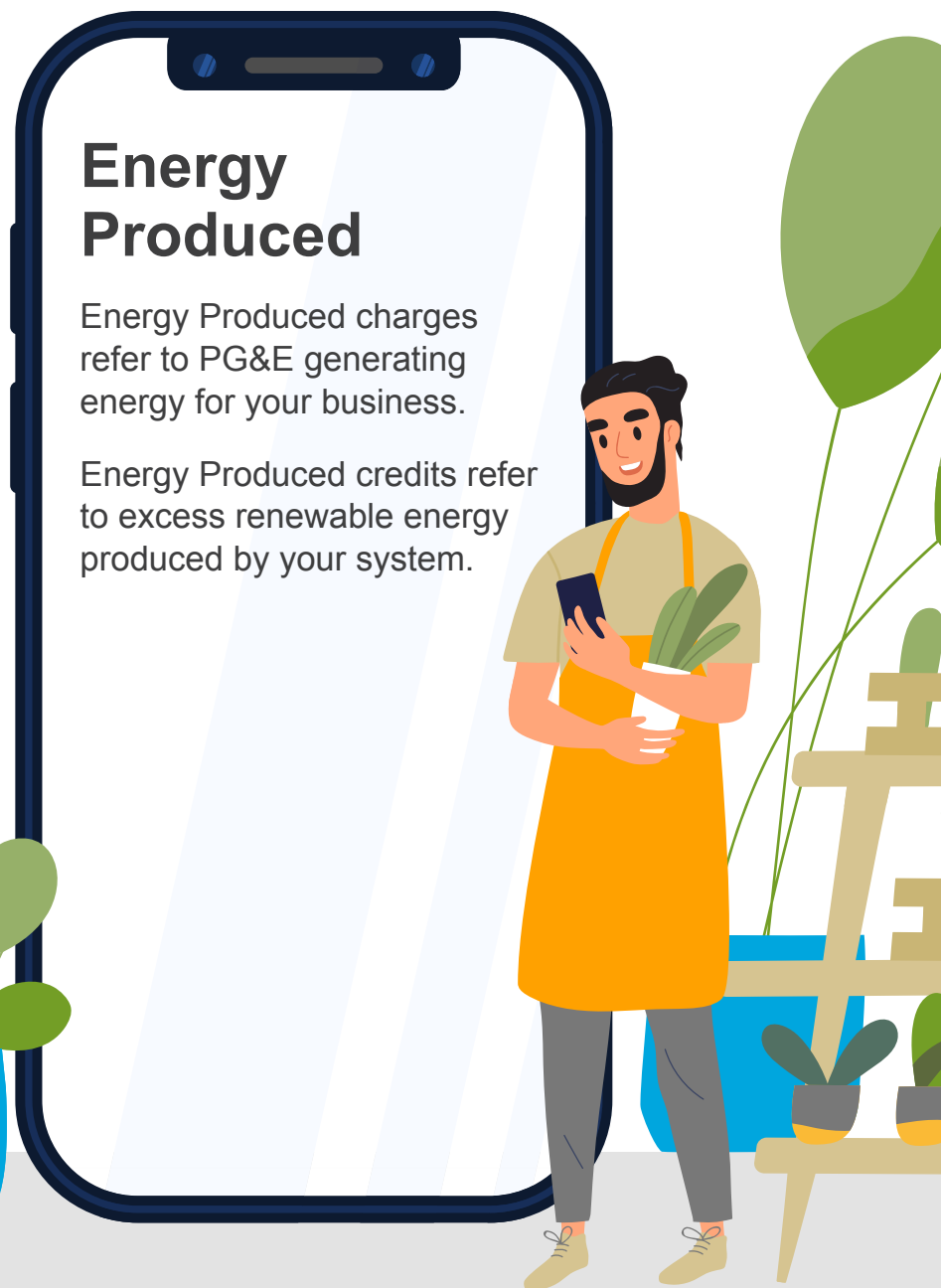
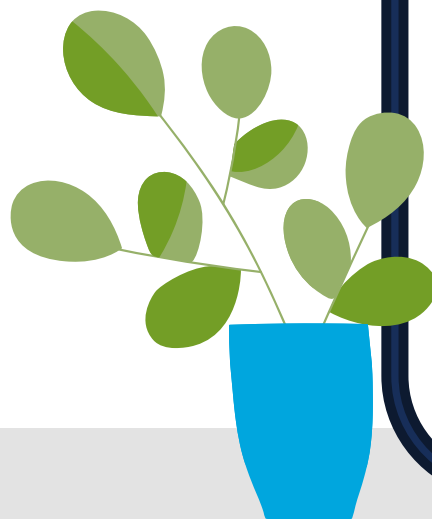
# Glossary of terms

- > Energy Produced
- > Energy Delivered
- > Energy Export Credits
- > Energy Export Credit Bank
- > Energy Export Credit (kWh) Earned This Bill Period
- > Net Surplus Compensation Credit
- > Non-bypassable charges
- > Permission to operate
- > True-Up Statement

## Energy Produced

Energy Produced charges refer to PG&E generating energy for your business.

Energy Produced credits refer to excess renewable energy produced by your system.



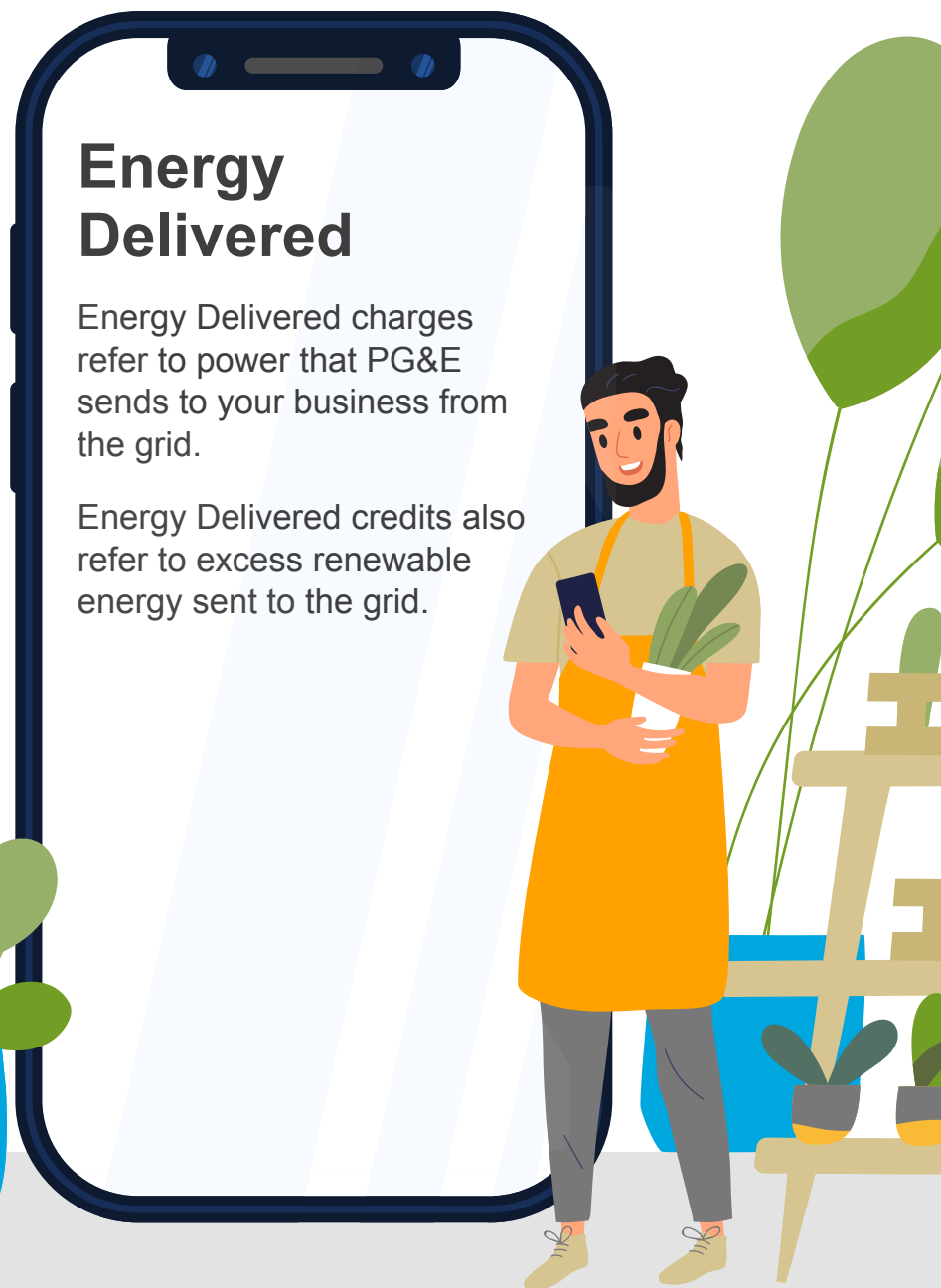
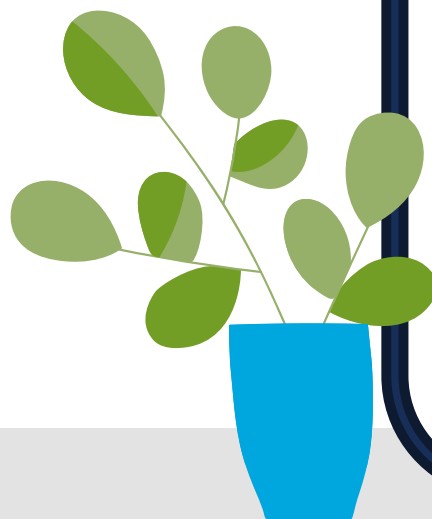
# Glossary of terms

- > [Energy Produced](#)
- > [Energy Delivered](#)
- > [Energy Export Credits](#)
- > [Energy Export Credit Bank](#)
- > [Energy Export Credit \(kWh\) Earned This Bill Period](#)
- > [Net Surplus Compensation Credit](#)
- > [Non-bypassable charges](#)
- > [Permission to operate](#)
- > [True-Up Statement](#)

## Energy Delivered

Energy Delivered charges refer to power that PG&E sends to your business from the grid.

Energy Delivered credits also refer to excess renewable energy sent to the grid.



# Glossary of terms

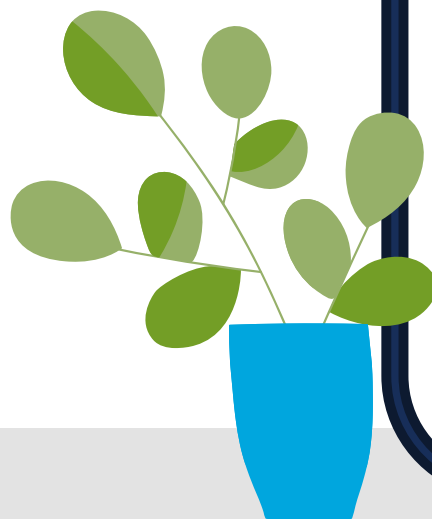
- > Energy Produced
- > Energy Delivered
- > Energy Export Credits
- > Energy Export Credit Bank
- > Energy Export Credit (kWh) Earned This Bill Period
- > Net Surplus Compensation Credit
- > Non-bypassable charges
- > Permission to operate
- > True-Up Statement

## Energy Export Credits

The credits for excess energy your renewable energy system produces and exports to the grid. The credits will vary by hour, day, and month to reflect the value of the electricity produced and electricity delivered.

For Community Choice Aggregation (CCA) customers and Direct Access providers, check with your provider for generation export values.

[View](#) energy export credit values.

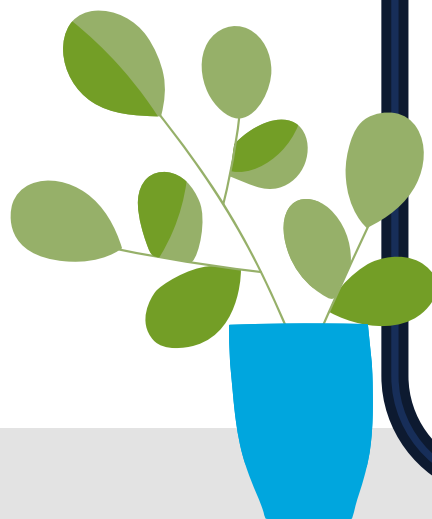


# Glossary of terms

- > Energy Produced
- > Energy Delivered
- > Energy Export Credits
- > Energy Export Credit Bank
- > Energy Export Credit (kWh) Earned This Bill Period
- > Net Surplus Compensation Credit
- > Non-bypassable charges
- > Permission to operate
- > True-Up Statement

## Energy Export Credit Bank

A chart that displays your accumulated Energy Export Credits used to offset monthly charges within the 12-month billing period. This chart is shown for every statement.

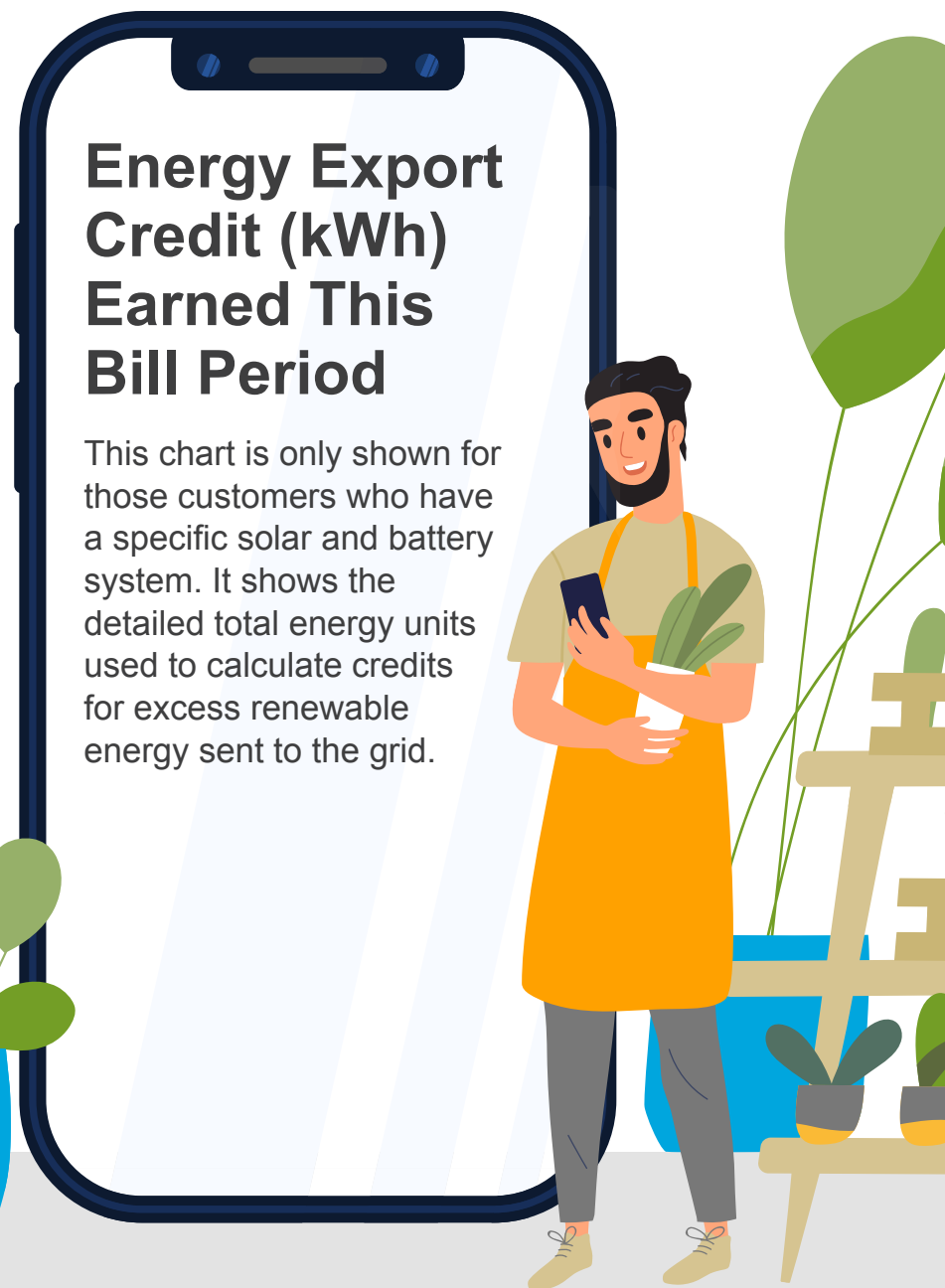
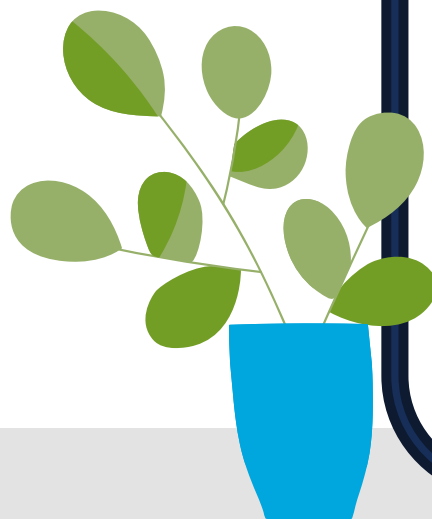


# Glossary of terms

- > Energy Produced
- > Energy Delivered
- > Energy Export Credits
- > Energy Export Credit Bank
- > Energy Export Credit (kWh) Earned This Bill Period
- > Net Surplus Compensation Credit
- > Non-bypassable charges
- > Permission to operate
- > True-Up Statement

## Energy Export Credit (kWh) Earned This Bill Period

This chart is only shown for those customers who have a specific solar and battery system. It shows the detailed total energy units used to calculate credits for excess renewable energy sent to the grid.



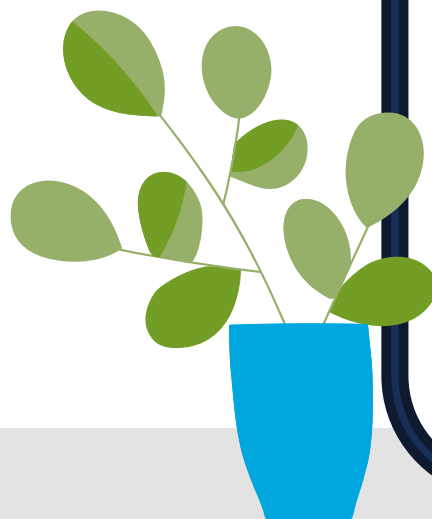
# Glossary of terms

- > Energy Produced
- > Energy Delivered
- > Energy Export Credits
- > Energy Export Credit Bank
- > Energy Export Credit (kWh) Earned This Bill Period
- > Net Surplus Compensation Credit
- > Non-bypassable charges
- > Permission to operate
- > True-Up Statement

## Net Surplus Compensation Credit

Credit applied to excess renewable energy sent to the grid when customers produce more renewable energy than they consume over their 12-month billing period.\* Credit values, as determined by CPUC, are typically lower than the monthly Energy Export Credit values.

**\*Community Choice Aggregators (CCA) set their own NSC rate. Contact your CCA for more information.**

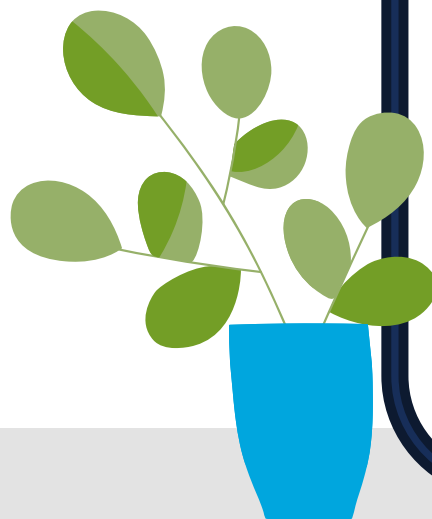


# Glossary of terms

- > Energy Produced
- > Energy Delivered
- > Energy Export Credits
- > Energy Export Credit Bank
- > Energy Export Credit (kWh) Earned This Bill Period
- > Net Surplus Compensation Credit
- > Non-bypassable charges
- > Permission to operate
- > True-Up Statement

## Non-bypassable charges

Charges paid by all PG&E customers to help fund energy efficiency programs and income-qualified programs.

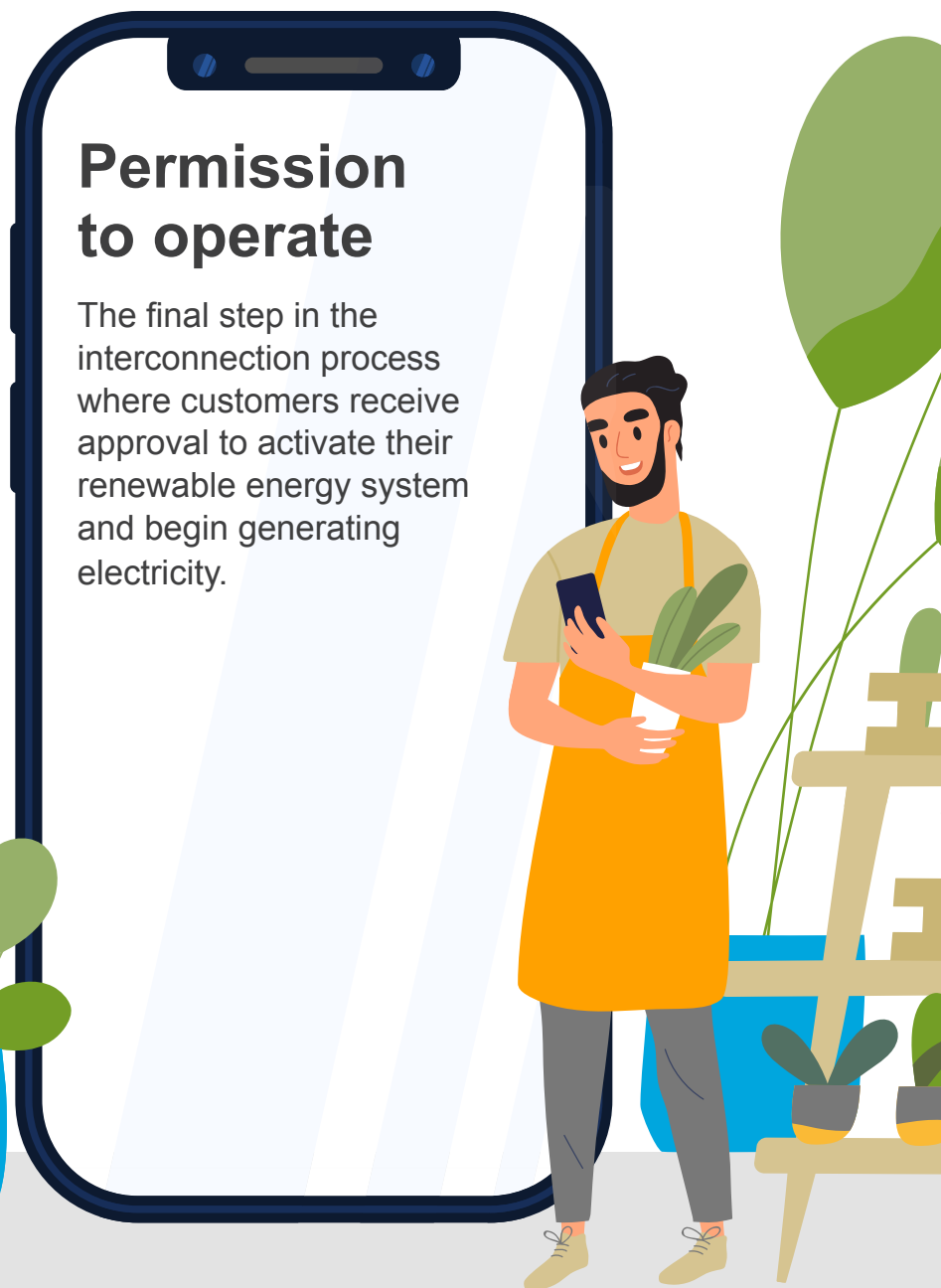
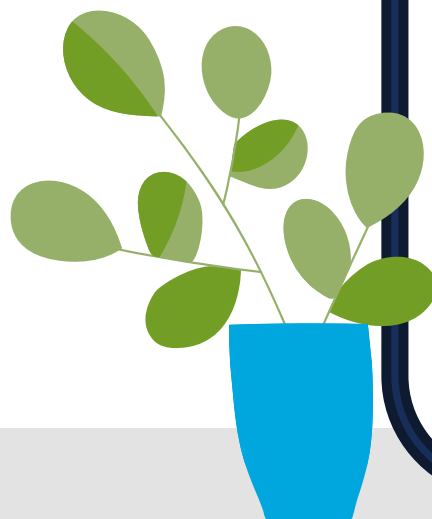


# Glossary of terms

- > Energy Produced
- > Energy Delivered
- > Energy Export Credits
- > Energy Export Credit Bank
- > Energy Export Credit (kWh) Earned This Bill Period
- > Net Surplus Compensation Credit
- > Non-bypassable charges
- > Permission to operate
- > True-Up Statement

## Permission to operate

The final step in the interconnection process where customers receive approval to activate their renewable energy system and begin generating electricity.



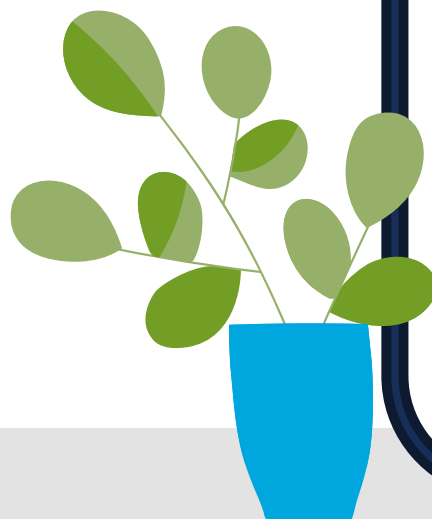
# Glossary of terms

- > Energy Produced
- > Energy Delivered
- > Energy Export Credits
- > Energy Export Credit Bank
- > Energy Export Credit (kWh) Earned This Bill Period
- > Net Surplus Compensation Credit
- > Non-bypassable charges
- > Permission to operate
- > True-Up Statement

## True-Up Statement

An annual 12-month\* statement that reconciles earned credits with charges from energy used from the grid over the 12-month billing cycle.

*\*Due to a variety of factors, such as changes to your account or renewable energy system, some customers' True-Up billing cycles may be less than a year.*

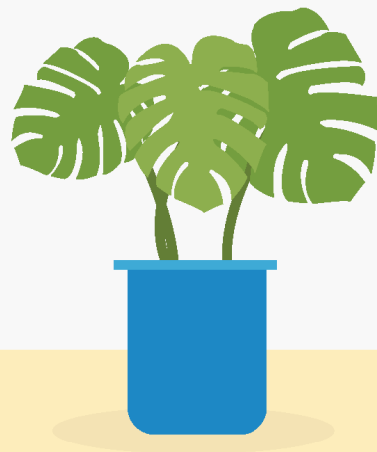
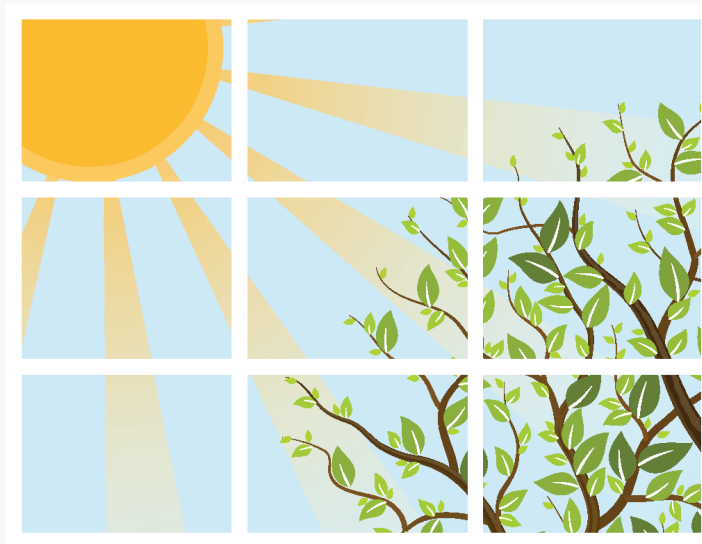


# Contact

Thank you again for choosing renewable energy. We are happy to answer any of your questions or help in any other way we can.

[Learn more](#)

Or call the Solar Hotline (also shown on your solar bill) at **1-877-743-4112**, from 7 a.m. to 6 p.m., Monday through Friday.



Message paid for by customers.



“PG&E” refers to Pacific Gas and Electric Company, a subsidiary of PG&E Corporation. ©2026 Pacific Gas and Electric Company. All rights reserved. This program is funded by California utility customers and administered by PG&E under the auspices of the California Public Utilities Commission. CSB-0426-6701