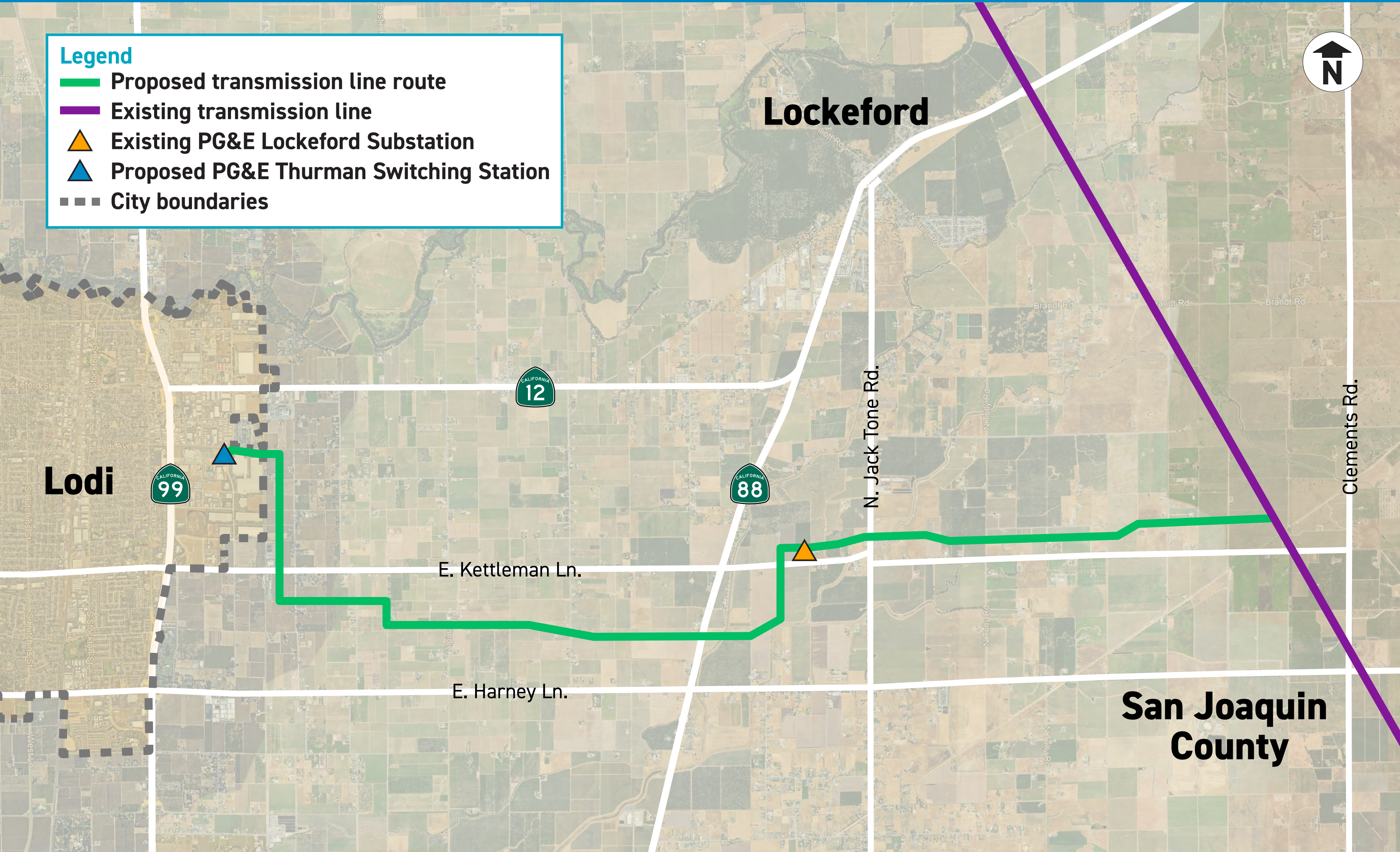







# PG&E Northern San Joaquin 230 kV Transmission Project

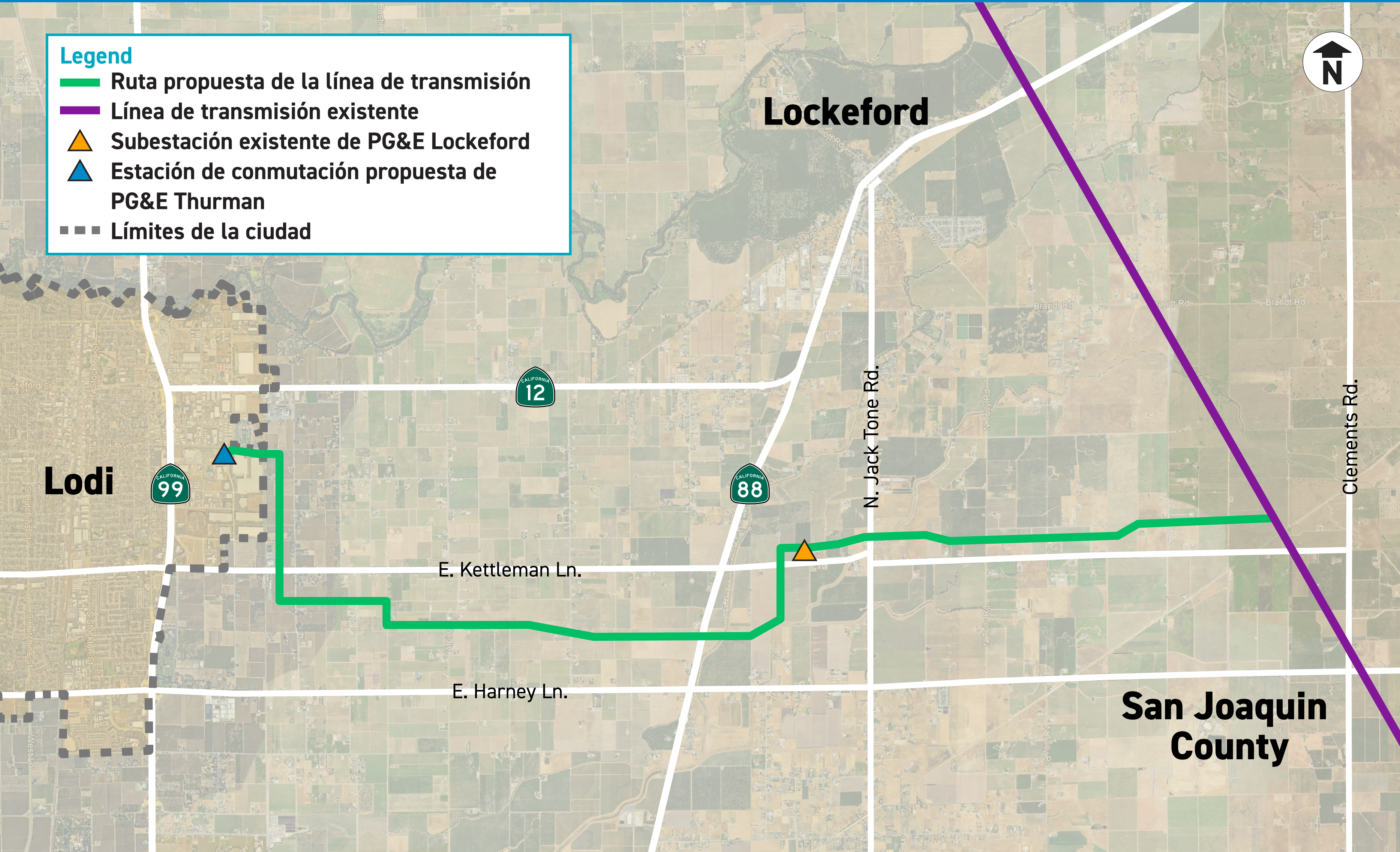
**Legend**

- Proposed transmission line route
- Existing transmission line
- Existing PG&E Lockeford Substation
- Proposed PG&E Thurman Switching Station
- City boundaries



**Legend**

-  Ruta propuesta de la línea de transmisión
-  Línea de transmisión existente
-  Subestación existente de PG&E Lockeford
-  Estación de conmutación propuesta de PG&E Thurman
-  Límites de la ciudad



**Lockeford**

**Lodi**

**San Joaquin County**



E. Kettleman Ln.

E. Harney Ln.

N. Jack Tone Rd.

Clements Rd.