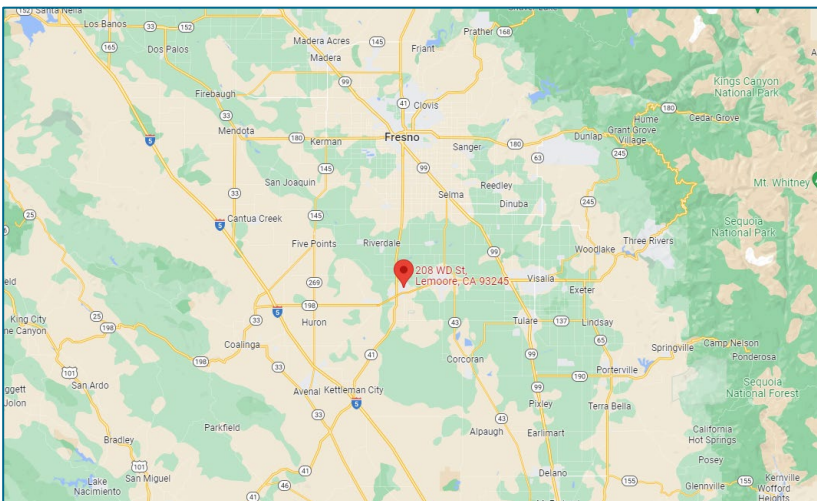
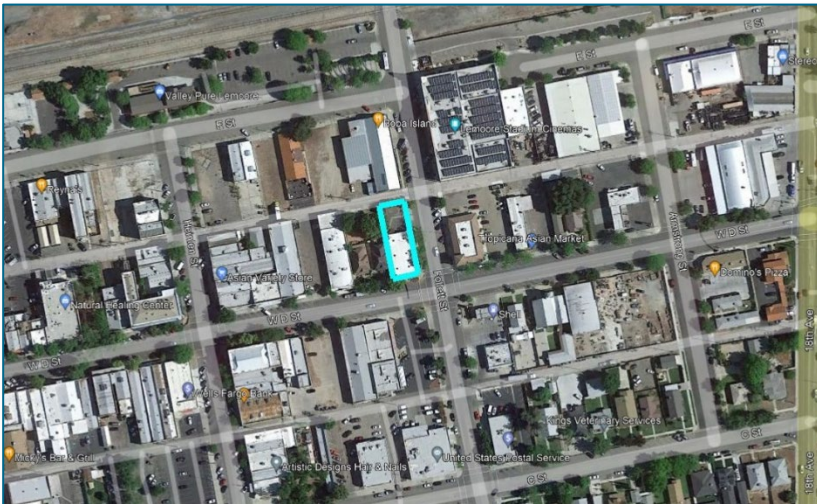




Property for Sale

208 West D Street, Lemoore



[View on Google Maps](#)

Image Source: Google

Property Details

±0.17-acre flat, rectangular parcel improved with an office building and parking lot

Location: Downtown Lemoore

Kings County

APN: 020-053-006-000

Zoning: DMX-1 - Downtown Mixed Use, Core

General Plan Designation: Mixed Use

Description: Downtown location near professional offices, restaurants, and retail shops. The single-story building is ±3,818 gross square feet/±3,575 rentable square feet and the property includes a rear parking lot with 10 spaces. Near public transit and less than a mile from State Route 198 freeway.

Environmental: There are no known environmental issues on the property.

PG&E Facilities: Street light and overhead and underground electric lines at the rear of the property will require an easement.

Broker Contact:

Jeremy Reed

jreed@thearcp.com

(559) 705-2120

Contact PG&E at landsales@pge.com

The above information, while not guaranteed, has been secured from sources we believe to be reliable. It may be subject to error, change, or withdrawal. Interested parties should contact PG&E to verify details about the property.

Updated January 3, 2024