



Former Vallejo Manufactured Gas Plant Curtola Parkway and Sonoma Boulevard, Vallejo

Environmental Project Update
February 2025

Project Overview

In spring and summer 2025, PG&E is scheduled to complete the restoration of the boat launch parking lot, which is a portion of the larger 26-acre City of Vallejo-owned property at the corner of Curtola Parkway and Sonoma Boulevard (site). From 2021-2023, PG&E addressed environmental impacts at the site associated with a former manufactured gas plant (MGP) that operated from 1872 to 1930. The cleanup work was completed under the oversight of the California Department of Toxic Substances Control (DTSC).

PG&E is returning to the site in February 2025 to conduct post-remediation sampling under DTSC oversight and then will complete the remaining boat launch parking lot restoration activities in accordance with permits from the San Francisco Bay Conservation and Development Commission (BCDC) and the City of Vallejo. This work supports preparing the site for future redevelopment by the City of Vallejo.



An artist rendering of the restored boat launch parking lot.

Boat Launch Parking Lot Restoration Work

In fall/winter 2024, PG&E completed backfilling, grading and paving work at the boat launch parking lot area. This spring/summer, PG&E will conduct the remaining restoration work. Work will occur Monday through Friday from 7:00 a.m. to 5:00 p.m. When necessary, work may extend to 7:00 p.m. or occur on Saturdays. Work includes installing:

- Electrical equipment and vehicle charging stations
- New lighting fixtures
- New landscaping and fencing
- New public restrooms
- Striping of parking lot pavements
- Concrete sidewalks, curbs and accessibility ramps
- Utilities upgrades and connections



New paving in the boat launch parking lot area.

All work will occur in the boat launch parking lot area (see Figure 1), with some staging of equipment and supplies inside the larger enclosed City-owned property at the end of Mono Street and occasional activities in Curtola Parkway associated with required utilities upgrades and connections. Community members can expect to see a field crew of 10-30 individuals working with trucks and other construction equipment to support installation activities. You may experience some noise and truck traffic during this work.

PG&E is committed to the safety of the community, and all work will be conducted in accordance with a site-specific Health and Safety Plan that includes measures to minimize any potential construction impacts. Best management practices will be in place to control dust, and real-time air monitoring will be performed during the work to protect the surrounding community. Traffic control measures like flaggers and signage will be used for vehicle and pedestrian safety when trucks are entering and exiting the boat launch parking lot. The boat launch parking lot will remain closed until construction work is complete.

Post-Remediation Monitoring – February - March 2025

As required in the DTSC-approved cleanup plan, PG&E is conducting post-remediation soil gas (air between grains of soil) and groundwater sampling to document post-remediation conditions. The first round of soil gas sampling was completed in fall 2024, and PG&E is returning in February 2025 to install 10 new soil gas probes at 8 locations (see Figure 2) in the boat launch parking lot to support collecting and analyzing a second round of soil gas samples.

In late February/March 2025, PG&E crews will install and sample 10 groundwater monitoring wells to depths of 14 to 18 feet across the site (see Figure 2). Groundwater sampling will continue quarterly for the first year and then semiannually until DTSC determines no further groundwater monitoring is needed.



A worker collects soil vapor samples in fall 2024.

We do not anticipate this work will impact our neighbors, but you may hear some minor noise while crews use small truck-mounted drill rigs at sampling locations. PG&E and DTSC will notify the community before sampling work begins.

Property Reuse

PG&E is focused on working with DTSC to complete the post-remediation and site closure process. We anticipate this will take a minimum of two years. After DTSC certifies that all environmental work is complete, PG&E will return the property to the City of Vallejo, which will then make any decisions regarding redevelopment. PG&E is not involved in the City's redevelopment plans and we encourage you to contact the City directly for more information regarding future development of the property.

For More Information

We welcome your input. For more information, please contact the toll-free PG&E Environmental Remediation Response Line at (866) 247-0581 or remediation@pge.com. You can also visit the project website at: www.pge.com/vallejo-mgp.

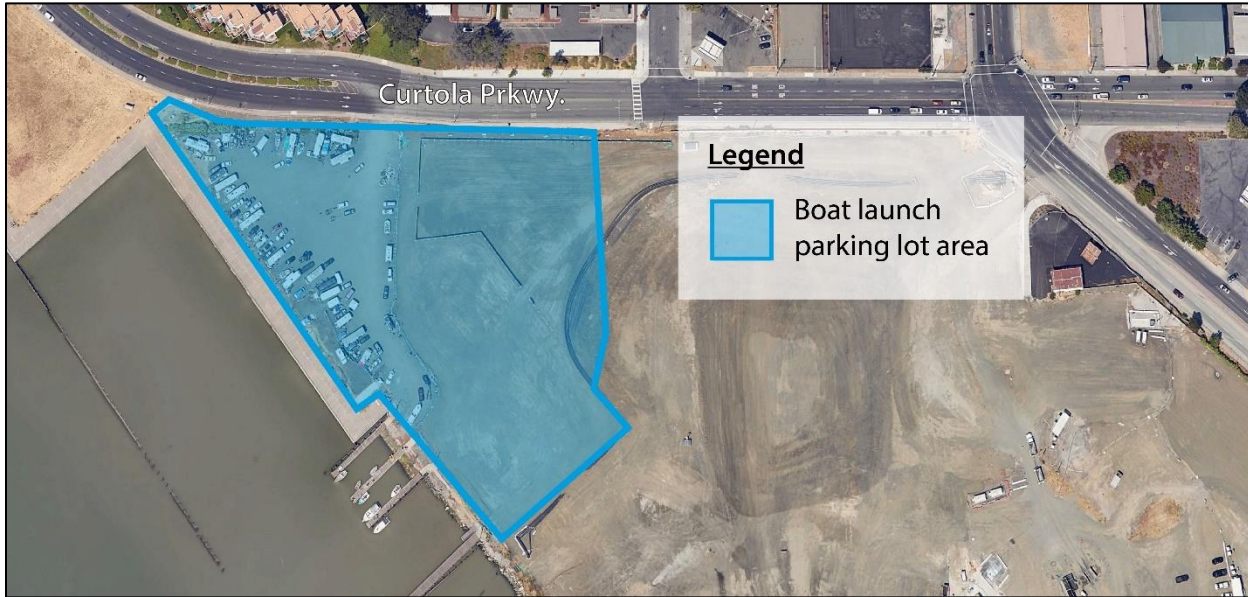


Figure 1 – A map showing the boat launch parking lot restoration area.

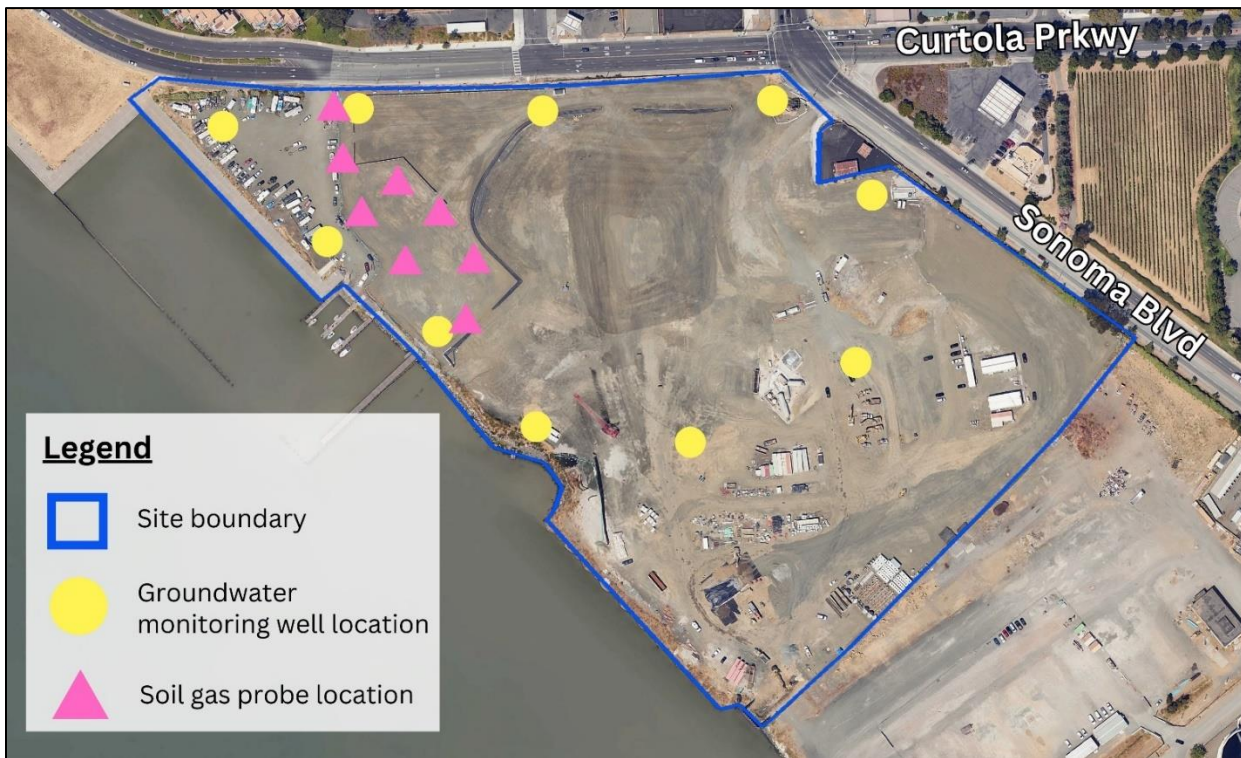


Figure 2 – A map showing the locations of soil gas probes and groundwater monitoring wells to be installed.