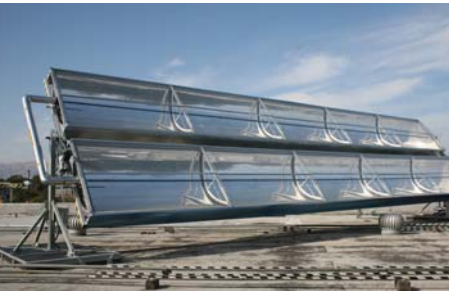




ET Technology Assessments

The Pacific Gas and Electric Company (PG&E) Emerging Technologies (ET) program has joined forces with the PG&E New Efficiency Options (NEO) to provide higher incentives for customer facilities hosting ET Technology Assessments. For over 30 years, PG&E has evaluated and assessed new and innovative technologies, including mainstream technologies such as Data Center Airflow Management, High Frequency Forklift Battery Chargers, Solar Powered Water Circulators and Ozone Laundry Systems.



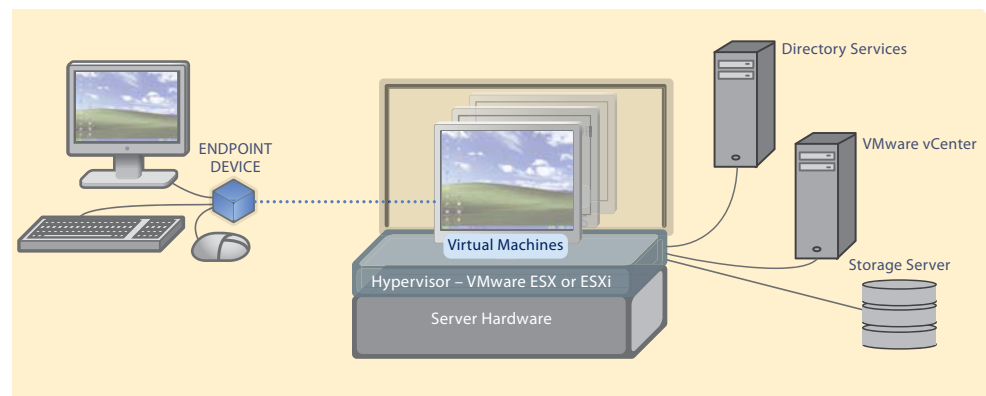
Solar Thermal System

The ET program seeks customers who wish to act as host facilities for technology assessments. The results of these assessments provide quantitative information on the new technology and help advance its adoption within utility incentive programs and individual facilities.

Currently, host facilities for the following emerging technologies are desired:

Solar Thermal for Steam Generation: Solar thermal technologies concentrate the sun's radiation and convert it into usable thermal energy. This heat is subsequently used in a boiler to generate steam/hot water for process needs. These systems are eligible for incentives, provided they do NOT generate electricity, and are cost-effective.

Thin Client / Virtual Desktop Infrastructure: A thin client is a general term for a device that relies on a server to operate. It provides a display device, keyboard and mouse, and basic processing power in order to interact with the server. It does not store any data locally and requires little processing resources – it is very thin in features and functionality – hence the term 'thin client'. According to Pano Logic, thin clients can reduce the total cost of ownership by 70 percent, including energy and IT support costs, when compared to Windows PCs.



Thin Client Infrastructure

Offer

In partnership with customer host sites, PG&E aims to advance the understanding of promising but unproven technology. PG&E offers increased incentives and technical support in the evaluation of these technologies.

NEO incentives: NEO incentives are 40 percent higher than standard Customized Retrofit incentive rates and are available to facilities undergoing a non-lighting technology assessment. Current rates per technology category are:

Measure	NEO
Process	\$0.13 per kWh
HVAC and Refrigeration	\$0.21 per kWh
HVAC and Refrigeration Controls	\$0.13 per kWh
Natural Gas	\$1.40 per therm
Demand	\$140 per peak kW

Issued incentives are based on measured results presented in the technology assessment and cannot exceed the incremental cost of the measure.

ET Technology Assessment: Technology assessments provide an in-depth report on performance enhancements and cost savings at the facility as a result of the technology installation. Host sites provide access to their facility for PG&E assessment activity.

Process

Technology and host facility candidates undergo an approval process prior to being approved for an ET Technology Assessment.

Technology Opportunities: Current NEO emerging technologies have undergone review for overall market applicability, expected cost effectiveness, and other metrics. After undergoing similar analysis, other technology opportunities will be considered for addition as NEO emerging technologies. Customers or manufacturers promoting a newly identified opportunity should be prepared to provide supporting documentation appropriate to the technology type.

Host Facility: Host facilities will be evaluated in relation to the technology under consideration. Evaluation criteria will vary by technology but may include such things as technical applicability, facility type, and facility operating characteristics.

For additional information on becoming a host facility or to inquire about qualifying new products as NEO emerging technology, please call **1-866-348-2399**, email NEO@pge.com or visit www.pge.com/NEO.

Previously performed technology assessments are hosted at the Emerging Technologies Coordinating Council, www.etcc-ca.com.

