



**SERVICE ENTRANCE FROM UNDERGROUND
VAULT USING BUS BARS**

041352

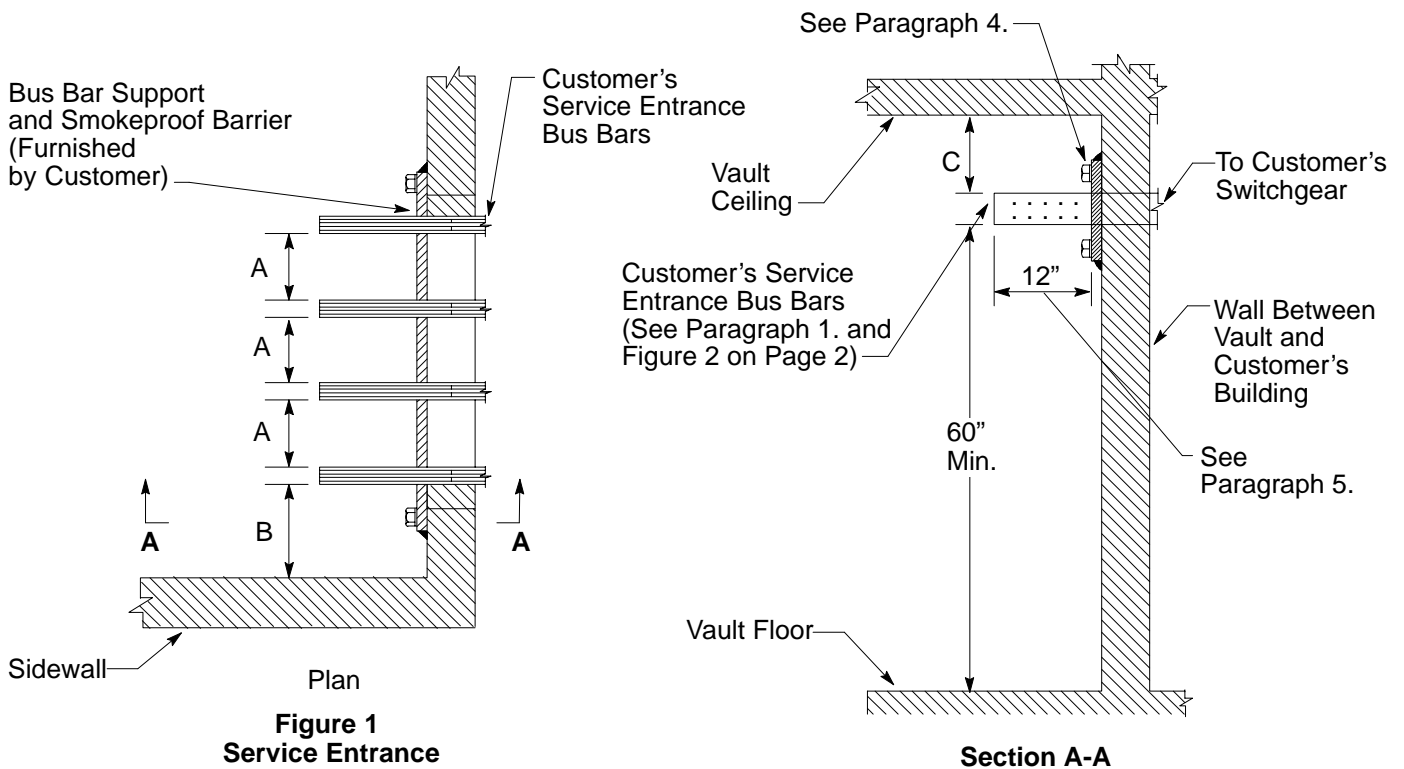
Dept:	Distribution	Section:	Electric
Approved by:	D. H. Mulkey <i>Dave H. Mulkey</i>	Date:	11-30-95
Rev. #01: This document replaces Document 041352, Rev. #00. For a description of changes, see Page 3.			

Purpose and Scope:

The purpose of this document is to illustrate the preferred method of installing a service entrance from an underground vault using bus bars.

General Information:

1. Customer shall drill bus bars to fit connectors furnished by PG&E.
2. If the above configuration or dimensions illustrated in this document are impracticable because of physical or other limitations, consult PG&E.
3. For customer-owned underground vaults, consult PG&E.
4. All exposed grounded metal bolts within 10" of bus bars shall be suitably insulated.
5. For bus rated at less than 3,000 Amps, bus bars may extend less than 12" from bus support and smokeproof barrier. Consult PG&E.
6. Barrier not needed if firestop supports the bus and is smokeproof.



Service Entrance From Underground Vault Using Bus Bars

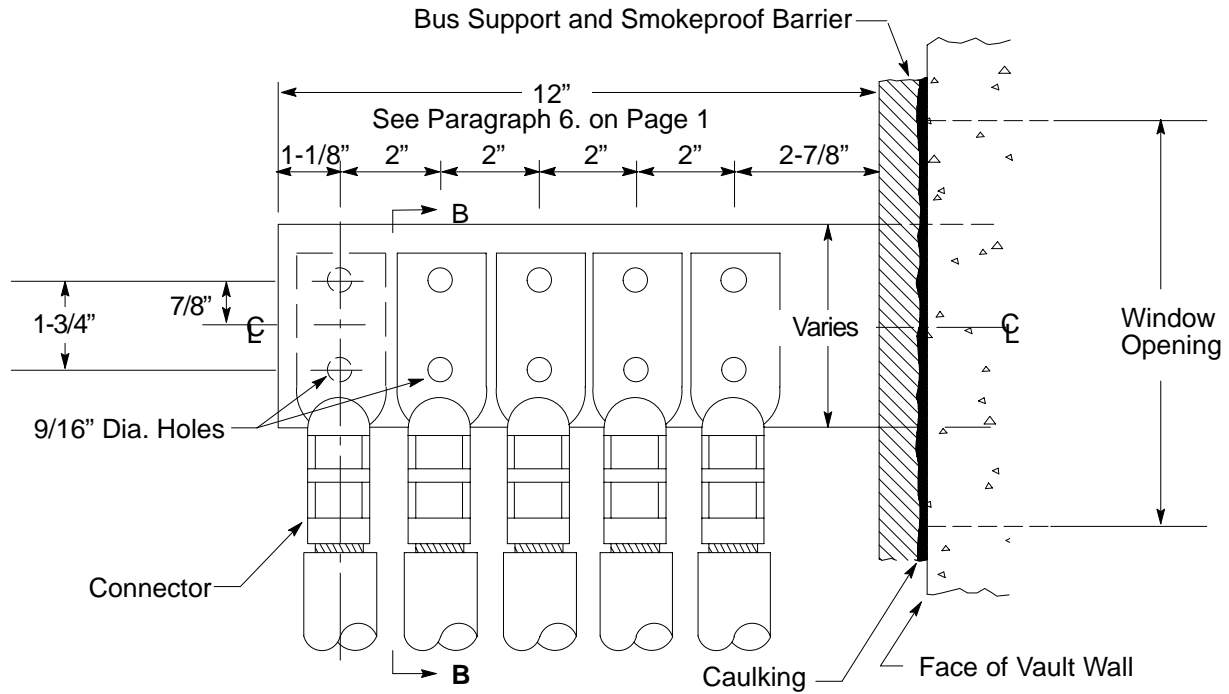
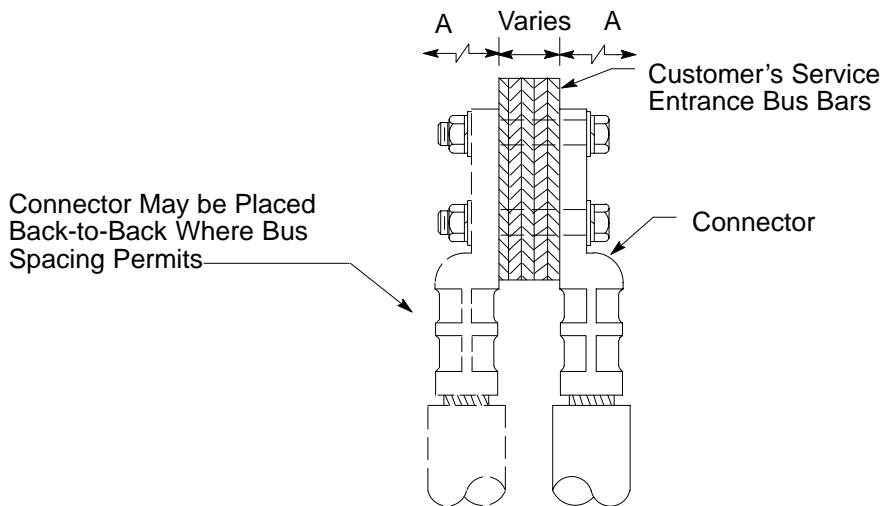


Figure 2
Connection to Customers Bus Bar



Section B-B

Table 1 Minimum Dimension in Inches

Circuit Voltage	Dimensions (Inches – Minimum)		
	A	B	C
120/208	8	10	10
277/408			

This document is also seen in Section 15 of the Electric and Gas Service Requirements (“Green Book”) and in Section 13 of the Electric Meterman’s Manual.

Service Entrance From Underground Vault Using Bus Bars

Revision Notes:

Revision 01 has the following changes:

1. Minor changes have been made to bring this document up to current publishing specifications.