



**WECC Regional Planning  
Pacific Northwest/Canada to Northern California  
Transmission Project**

**Stakeholder Meeting of October 22, 2007**

**Project Manager Presentation**

**Steve Metague**



# Agenda

- 11:00 a.m. – 11:30 a.m. Introduction and Project Manager Presentation (Steve Metague)
- 11:30 a.m. – 12:15 p.m. Committee Reports – Presentations of Committee Reports
- \* Loads and Resources Working Group (Dennis Sullivan)
  - \* Technical Analysis Committee (Ben Morris)
  - \* Economic Analysis Committee (Manho Yeung)
- 12:15 p.m. – 1:00 p.m. Lunch
- 1:00 p.m. – 1:30 p.m. Draft WECC Regional Planning Report (Jason Yan)
- 1:30 p.m. – 2:00 p.m. Updates from Steering Team Members
- 2:00 p.m. – 2:45 p.m. Stakeholder Comment Forum
- 2:45 p.m. – 3:00 p.m. Wrap Up

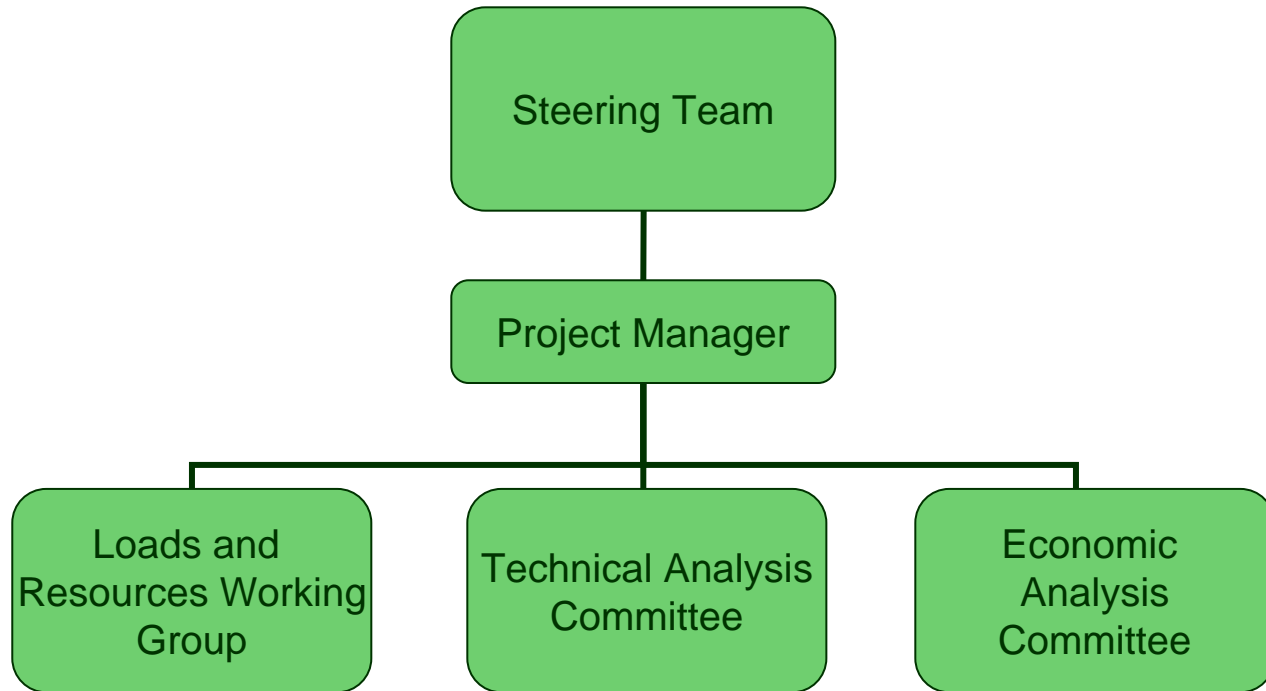
# Project Overview

This proposed line is intended to provide three main benefits.

1. Provides access to significant incremental renewable resources in Canada and the northwestern United States.
2. The proposed PNW/Canada - Northern California project would help improve regional transmission reliability.
3. The project could provide other market participants with beneficial opportunities to use the facilities.



# Organizational Structure





## **Stakeholder Outreach**

- Stakeholder meetings, 12/12/06, 8/2/07, 10/22/07
- Regular committee meetings with open participation
- Individual meetings with various stakeholders
- Project website
- Project email box

# Next Steps

- Post final reports on Project website
- Transition to WECC Phase 1 Rating Process
- Continue open planning process
  - Stakeholder meetings
  - New rating study teams to be formed
  - Interactive Project website



## Basic Elements of Conceptual Project Schedule

Task Name	Duration (months)	Start (Mo-Yr)	Finish (Mo-Yr)	2007				2008				2009				2010				2011				2012				2013				2014				2015			
				Q1	Q2	Q3	Q4	Q1	Q2	Q3	Q4	Q1	Q2	Q3	Q4	Q1	Q2	Q3	Q4	Q1	Q2	Q3	Q4	Q1	Q2	Q3	Q4	Q1	Q2	Q3	Q4	Q1	Q2	Q3	Q4	Q1	Q2	Q3	Q4
<b>FEASIBILITY ANALYSIS</b> Regulatory & Stakeholder Coordination Corridor Selection High Level Design and Maintenance Standards Commercial Model Project Participation Agreement	18	Jan-07	Jun-08					●	●																														
<b>PROJECT PERMITTING</b> Application Preparation (PEA) EIR/EIS Process Other State/Federal Permits	45	Jul-08	Apr-12						●	●	●	●	●	●	●	●	●																						
<b>PROJECT DESIGN</b> Substation Design Transmission Line	52	Jan-08	Apr-12						●	●	●	●	●	●	●	●																							
<b>PROJECT LAND ACQUISITION</b> Easement Documents Appraisals/Negotiation Condemnation	39	Nov-10	Jan-14																																				
<b>PROCUREMENT OF MATERIALS</b>	36	Jan-11	Jan-14																																				
<b>CONSTRUCTION</b> Assumes simultaneous construction of several segments	42	Apr-12	Sep-15																																				
<b>RELEASE TO OPERATION</b>	12	Jun-14	Sep-15																																				

Note: This conceptual project schedule was prepared based on preliminary information without the benefit of route screening, preliminary engineering or other tasks necessary to finalize a detailed schedule. The timeframes set forth herein may change as the result of pre-application studies.



# Communications

- Website:  
[http://www.pge.com/biz/transmission\\_services/canada/](http://www.pge.com/biz/transmission_services/canada/)
- E-mail: [WECCProcessInfo@pge.com](mailto:WECCProcessInfo@pge.com)