



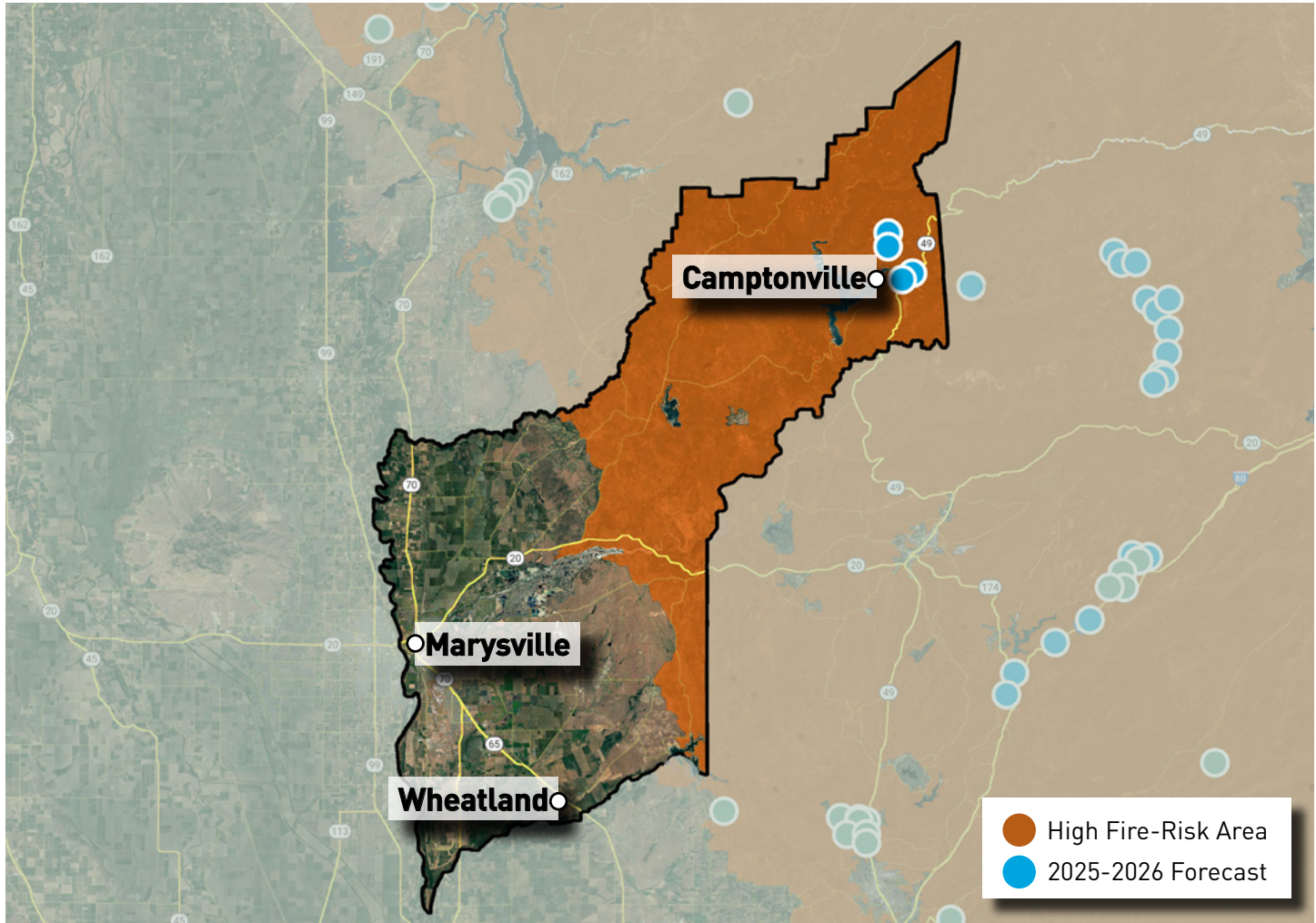
Undergrounding Map Yuba County

Undergrounding is one of many layers of protection that PG&E uses to reduce the risk of wildfires and keep our customers and hometowns safe. The map below shows the approximate locations of recently complete or forecast projects for 2024, as well as areas we have identified for potential work in 2025-2026. Forecast miles include areas that are in any stage of the planning process and projects are subject to change.

2024 COMPLETE/FORECAST
0 MILES

2025-2026 FORECAST*
APPROX. 25 MILES

*Extended forecast does not include all planned work and has a higher potential for changes.



For more information, please visit pge.com/undergrounding.

Data as of 12/31/2023. This map is for illustrative purposes. Forecasts can change as our risk model evolves to address the greatest wildfire risk. Forecast miles also exceed annual targets. Mileage in a community may increase or decrease due to access, weather, permitting or other constraints. In most cases, if a project is not completed during the year originally identified, it will continue through planning/construction phases during subsequent years.

Some of the measures included in this document are contemplated as additional precautionary measures intended to further reduce the risk of wildfires. "PG&E" refers to Pacific Gas and Electric Company, a subsidiary of PG&E Corporation. ©2024 Pacific Gas and Electric Company. All rights reserved. 1/23/2023.